

**LETTER OF EXEMPTION FOR THE PROPOSED
DAMBUZA ROAD UPGRADE**

FOR JG AFRIKA

DATE: 5 DECEMBER 2017

By Gavin Anderson

**Umlando: Archaeological Surveys and Heritage
Management**

PO Box 102532, Meerensee, 3901

Phone/fax: 035-7531785 Fax: 0865445631

Cell: 0836585362



TABLE OF CONTENT

INTRODUCTION.....	4
DESKTOP STUDY	9
EXPERIENCE OF THE HERITAGE CONSULTANT	14
DECLARATION OF INDEPENDENCE.....	14

TABLE OF FIGURES

FIG. 1 GENERAL LOCATION OF THE STUDY AREA.....	5
FIG. 2: AERIAL OVERVIEW OF THE STUDY AREA.....	6
FIG. 3: TOPOGRAPHICAL OVERVIEW OF THE STUDY AREA	7
FIG. 4: SCENIC VIEW OF THE STUDY AREA.....	8
FIG. 5: LOCATION OF KNOWN HERITAGE SITES NEAR THE STUDY AREA.....	10
FIG. 6: STUDY AREA IN 1937	11
FIG. 7: STUDY AREA IN 1968	12
FIG. 8: PALAEOLOGICAL IMPACT ASSESSMENT.....	13

Abbreviations

HP	Historical Period
IIA	Indeterminate Iron Age
LIA	Late Iron Age
EIA	Early Iron Age
ISA	Indeterminate Stone Age
ESA	Early Stone Age
MSA	Middle Stone Age
LSA	Late Stone Age
HIA	Heritage Impact Assessment
PIA	Palaeontological Impact Assessment

INTRODUCTION

The proposed project primarily comprises the re-alignment and blacktop surfacing of gravel access roads which will provide access to surrounding residential properties. These roads lead onto Dambuza Road, Edendale, KZN. The proposed roads will be 5.5m in width and will include formalised drainage which will be designed and constructed in accordance with the SANRAL Drainage Manual. The proposed road upgrades and alignments are being undertaken in accordance with the approved town planning layouts which are being implemented in the area to formalise the existing residential settlement.

The road is located in the Edendale H area, and about 700m south of the M70 (fig. 1 - 4)

Umlando was requested to comment on the need for an HIA for the project. I noted that the area was in an built up area of Edendale. The chances of heritage sites occurring in this area are rare. I suggested a letter requesting exemption from further HIA work, with a basic desktop study.

FIG. 1 GENERAL LOCATION OF THE STUDY AREA

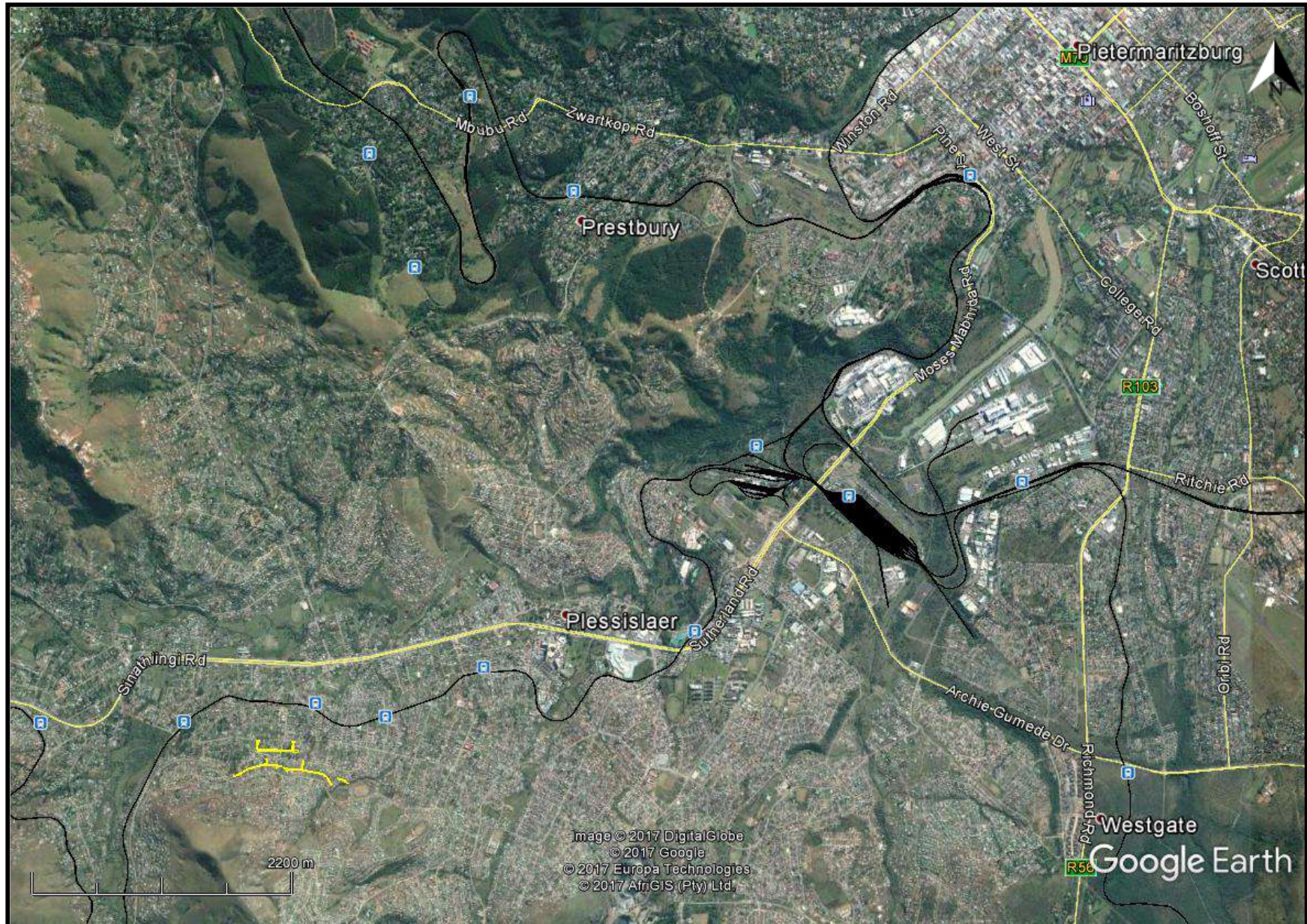


FIG. 2: AERIAL OVERVIEW OF THE STUDY AREA



FIG. 3: TOPOGRAPHICAL OVERVIEW OF THE STUDY AREA

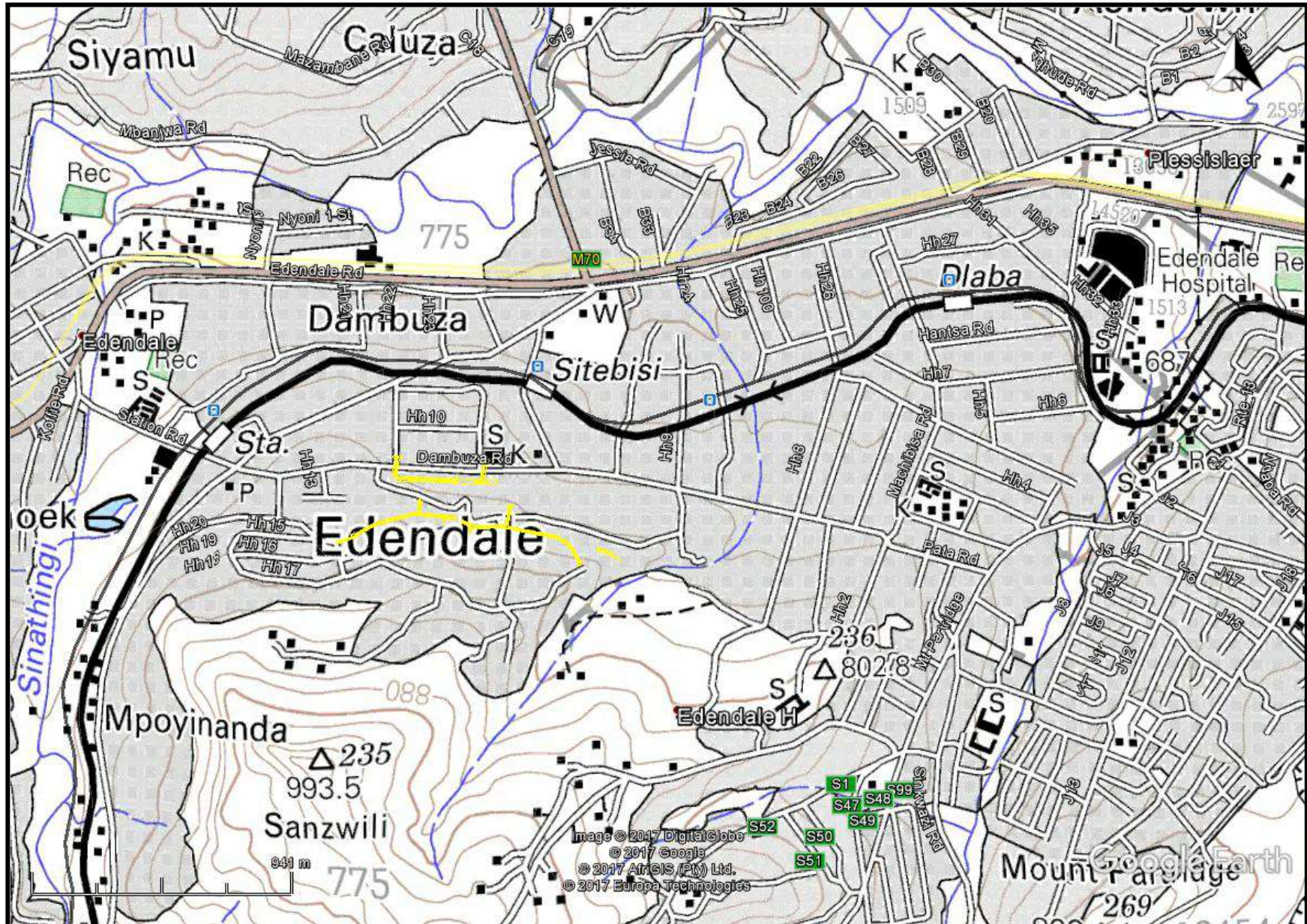


FIG. 4: SCENIC VIEW OF THE STUDY AREA



DESKTOP STUDY

The desktop study consisted of analysing various maps for evidence of prior habitation in the study area, as well as for previous archaeological surveys. The archaeological database indicates that there are archaeological sites in the general area (fig. 5). These sites include all types of Stone Age, Iron Age and Historical Period sites. No sites occur in the study area. Some buildings and monuments occur in Edendale but will not be affected.

No national monuments, battlefields, or historical cemeteries are known to occur in the study area.

The 1937 aerial photographs show that the area was grasslands (fig. 6). While some houses do occur near the road upgrade, they have been destroyed by successive houses.

The 1968 1:50 000 topographical map indicates that some of the area is still grasslands, while the area near Dambuza Road has been urbanised (fig. 7).

The palaeontology is rated as having medium significance (fig. 8). However the area has been disturbed and the project is a road upgrade, not a new road. It is unlikely to affect palaeontological layers.

The maps suggest that there are no (remaining) heritage resources that will be affected by the road.

I recommend that the project be exempt from further HIA work.

FIG. 5: LOCATION OF KNOWN HERITAGE SITES NEAR THE STUDY AREA

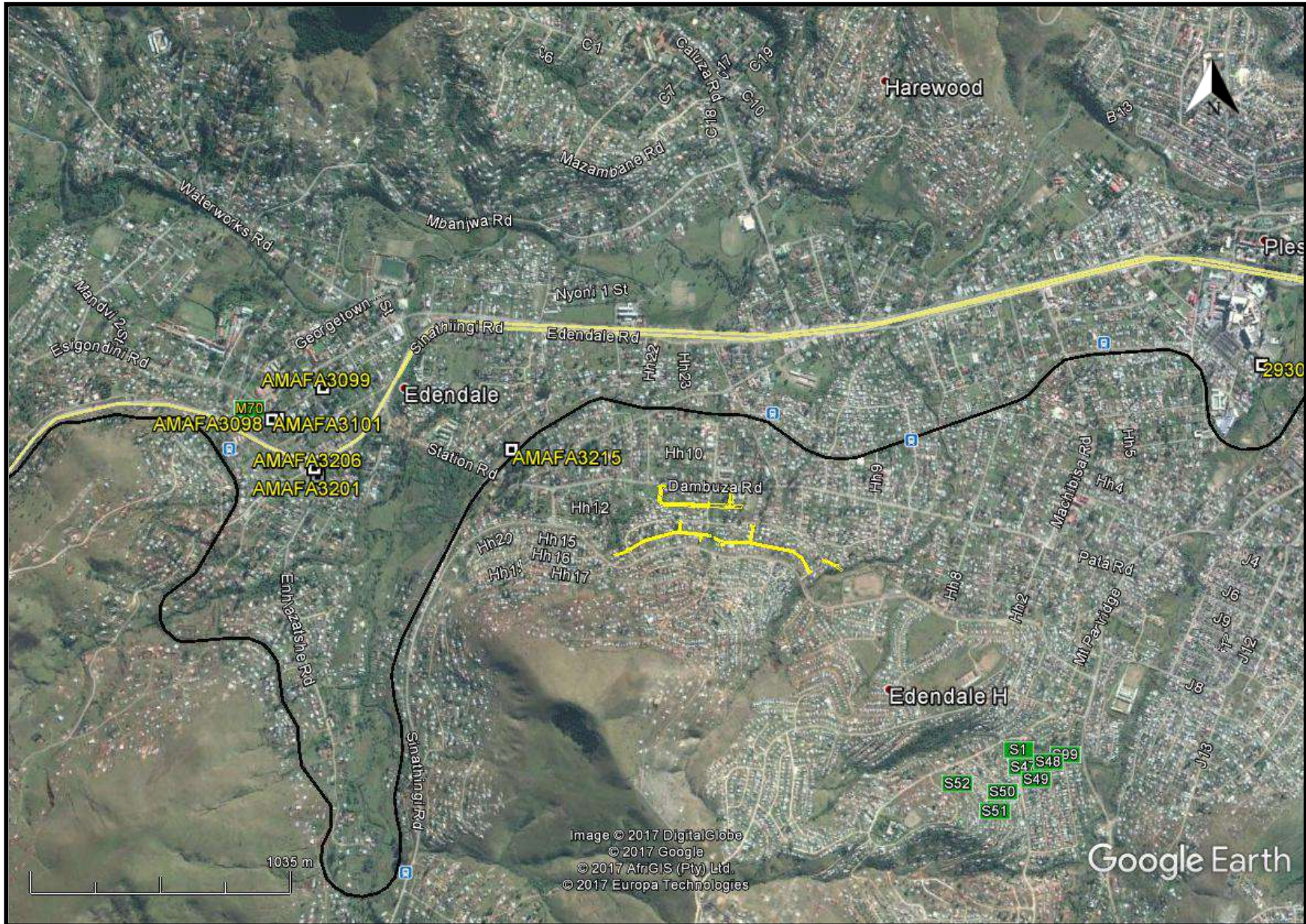


FIG. 6: STUDY AREA IN 1937

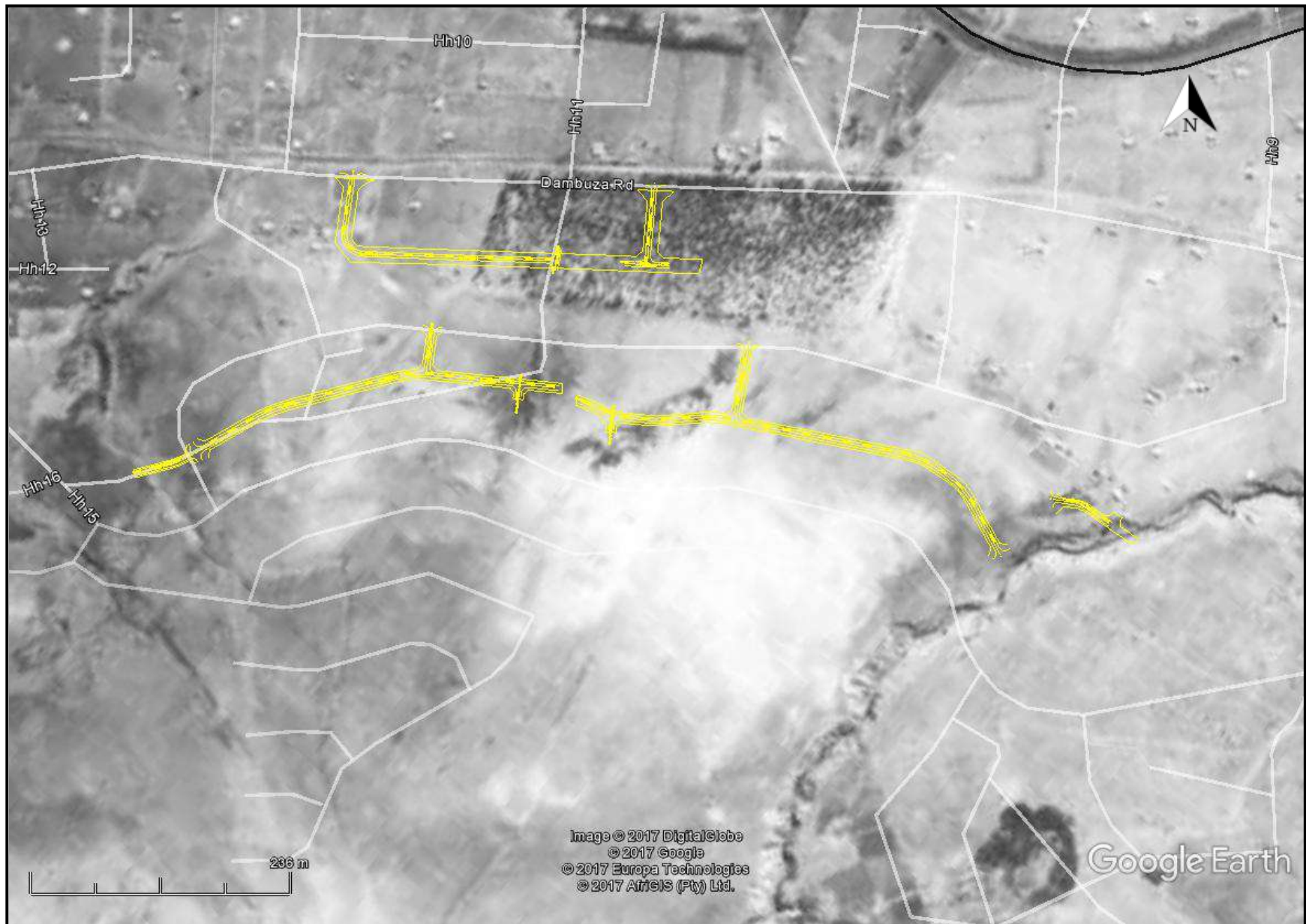


FIG. 7: STUDY AREA IN 1968

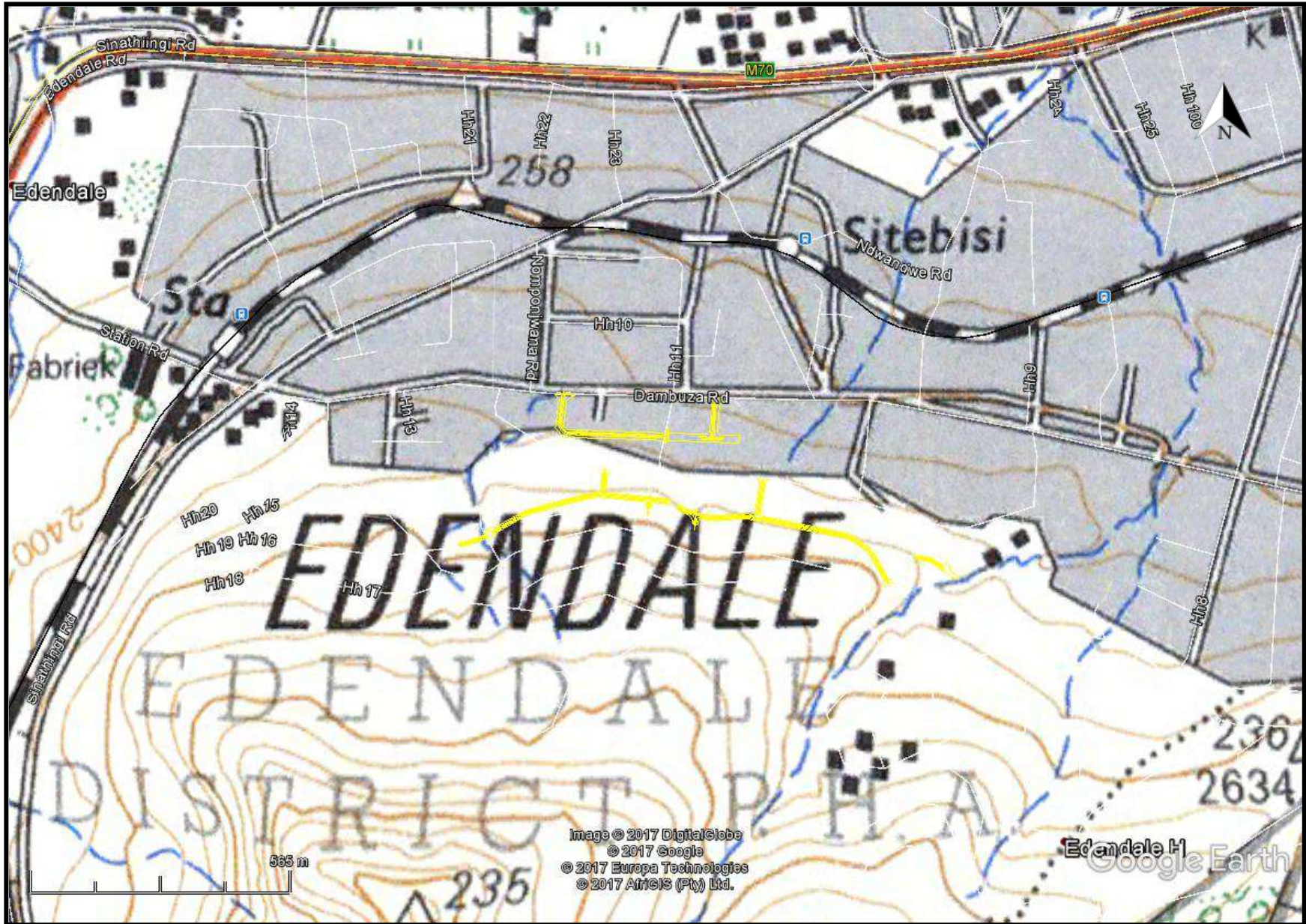


FIG. 8: PALAEOLOGICAL IMPACT ASSESSMENT

COLOUR	SENSITIVITY	REQUIRED ACTION
RED	VERY HIGH	field assessment and protocol for finds is required
ORANGE/YELLOW	HIGH	desktop study is required and based on the outcome of the desktop study, a field assessment is likely
GREEN	MODERATE	desktop study is required
BLUE	LOW	no palaeontological studies are required however a protocol for finds is required
GREY	INSIGNIFICANT/ZERO	no palaeontological studies are required
WHITE/CLEAR	UNKNOWN	these areas will require a minimum of a desktop study. As more information comes to light, SAHRA will continue to populate the map.

EXPERIENCE OF THE HERITAGE CONSULTANT

Gavin Anderson has a M. Phil (in archaeology and social psychology) degree from the University of Cape Town. Gavin has been working as a professional archaeologist and heritage impact assessor since 1995. He joined the Association of Professional Archaeologists of Southern Africa in 1998 when it was formed. Gavin is rated as a Principle Investigator with expertise status in Rock Art, Stone Age and Iron Age studies. In addition to this, he was worked on both West and East Coast shell middens, Anglo-Boer War sites, and Historical Period sites.

DECLARATION OF INDEPENDENCE

I, Gavin Anderson, declare that I am an independent specialist consultant and have no financial, personal or other interest in the proposed development, nor the developers or any of their subsidiaries, apart from fair remuneration for work performed in the delivery of heritage assessment services. There are no circumstances that compromise the objectivity of my performing such work.

A handwritten signature in black ink, appearing to read 'G Anderson', with a horizontal line underneath.

Gavin Anderson
Archaeologist/Heritage Impact Assessor

