

**PRELIMINARY HERITAGE ASSESSMENT FOR THE DUKUDUKU
SUBSIDISED HOUSING DEVELOPMENT**



TABLE OF CONTENTS

1	INTRODUCTION	1
1.1	PROJECT DESCRIPTION	1
1.2	LOCATION	1
2	CULTURAL HERITAGE.....	2
3	PALEONTOLOGY	3
4	CONCLUSION.....	5

1 INTRODUCTION

1.1 PROJECT DESCRIPTION

The proposed project is a largely Brownfield development and is aimed at constructing residential units within existing household footprints together with the formalisation of supporting infrastructure such as internal roads, water supply pipelines and sewerage pipelines within the Mtubatuba Local Municipality. The project area is characterised by residential settlements in the western half of the project area, with the other half containing a floodplain. The proposed development will entail:

- Removal of indigenous vegetation for the purpose of constructing the residential units and supporting infrastructure.
- Upgrading of roads and infrastructure.

1.2 LOCATION

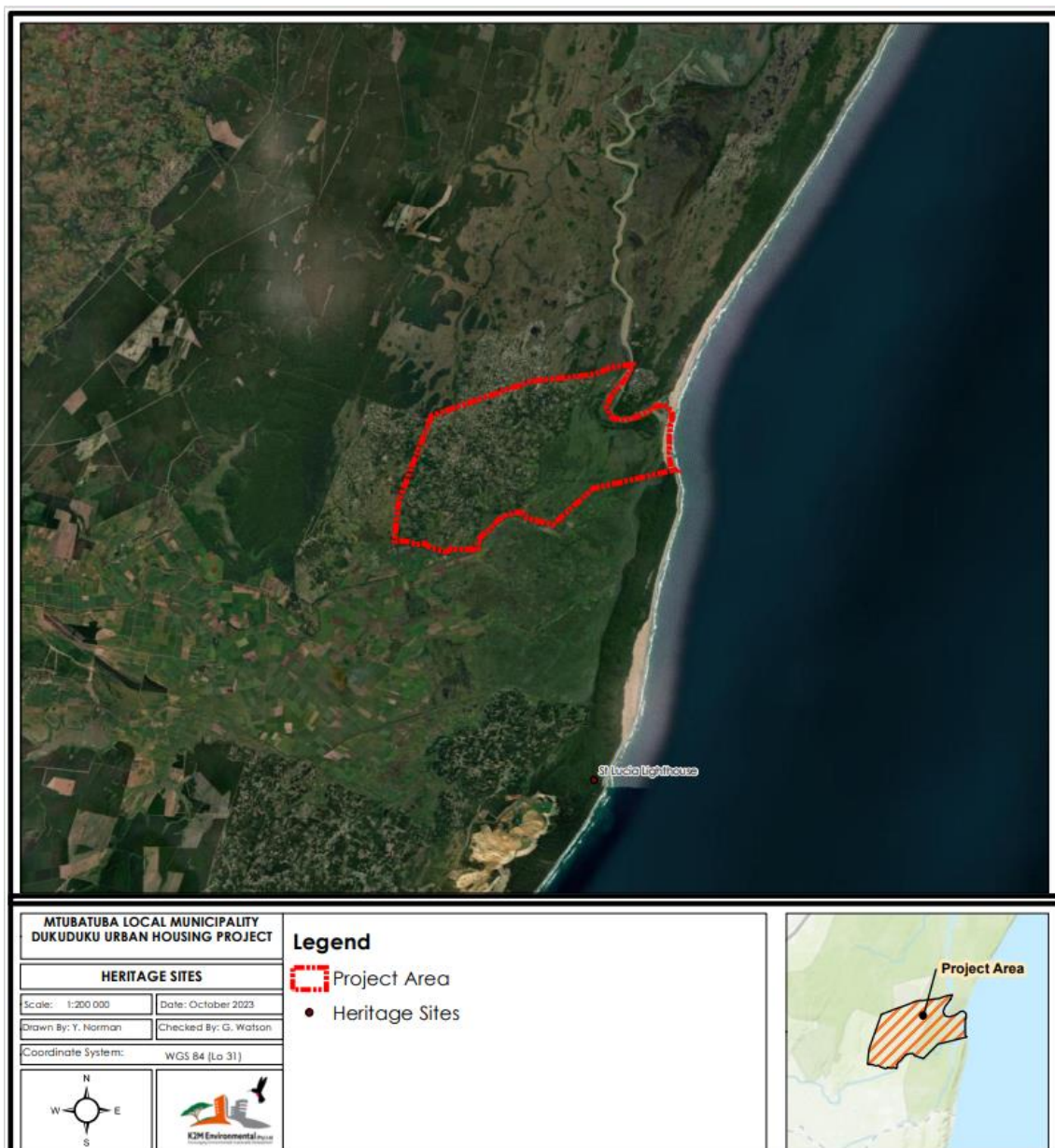
The proposed project is located in Wards 1 and 2 of the Mtubatuba Local Municipality and is located approximately 14.5 km east of Mtubatuba. The properties are described as follows:

- Farm 1486, Elderslie
- Farm 13702, St Lucia Lands

2 CULTURAL HERITAGE

As indicated in Map 2.1 below, there are no heritage sites within the Dukuduku project area nor are there any heritage sites within the Mtubatuba Local Municipality. The closest heritage site is the St Lucia Lighthouse (-28.5188; 32.3972), approximately 10.2 km south of the project area. The St Lucia Lighthouse is located within the Mfolozi Local Municipality and its level of protection is classified as “Provincial List”.

Map 2.1: Heritage Sites



3 PALEONTOLOGY

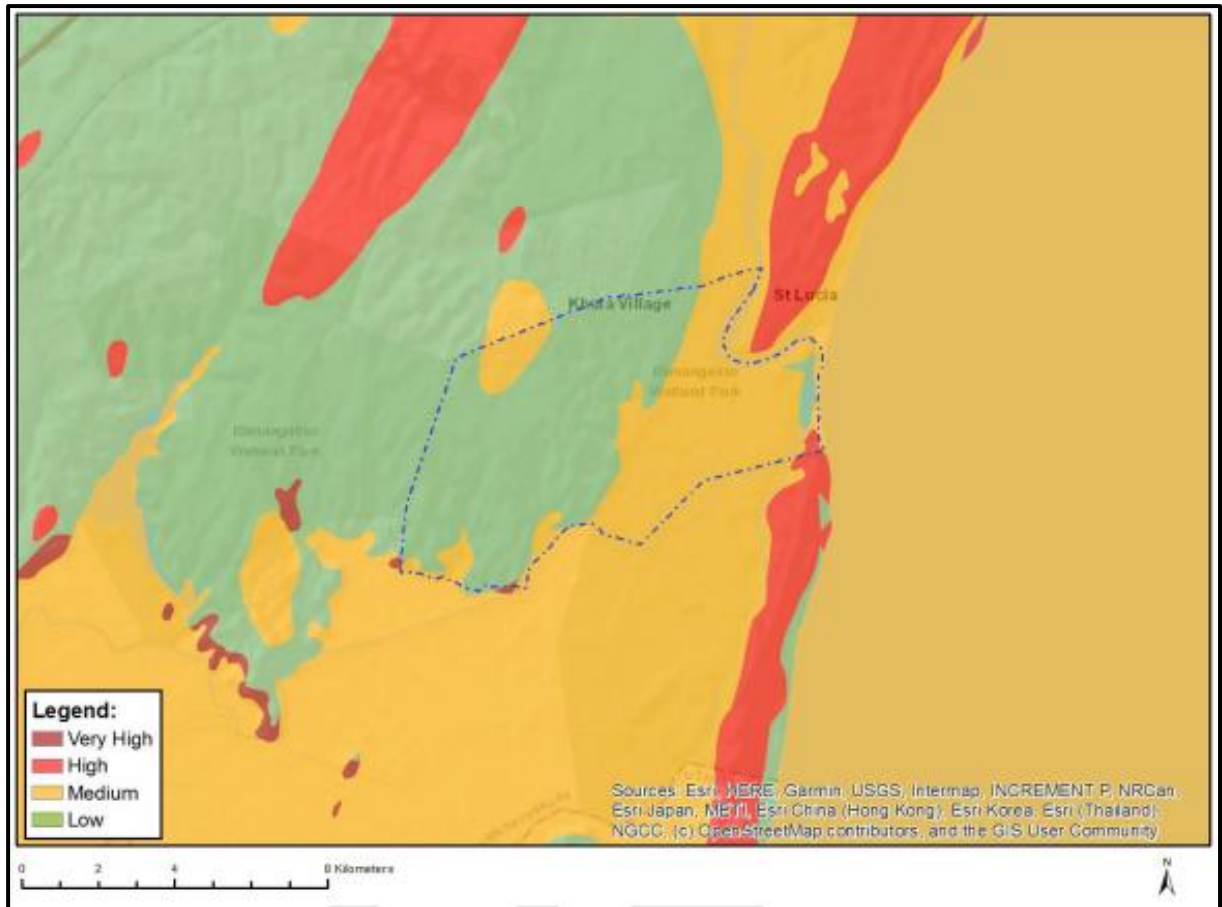
The impact of the proposed development on local fossil heritage is determined on the basis of the palaeontological sensitivity of the rock units concerned and the nature and scale of the proposed development, specifically with regards to the extent of fresh bedrock excavation. The corresponding colour notation for the various palaeontological sensitivity classes depicted in Table 3.1 below is adapted from the National Screening Tool.

Table 3:1: Colour Notation

COLOUR	SENSITIVITY	REQUIRED ACTION
DARK RED	VERY HIGH	Field assessment and protocol for finds is required
RED	HIGH	Desktop study is required and based on the outcome of the desktop study, a field assessment is likely
ORANGE	MEDIUM	Desktop study is required
GREEN	LOW	No palaeontological studies are required however a protocol for finds is required

As indicated in Figure 3.1 below, the project area is located in what is mapped out as Low, Medium, High and Very High Relative Paleontological Sensitivity.

Figure 3:1: Relative Paleontology Sensitivity Map



In the event that any fossils are to be discovered during construction, the following needs to be undertaken:

- Work should cease immediately,
- The area must be cordoned off,
- The contractor must contact AMAFA;
- No fossils are to be removed by the workers/contractors

4 CONCLUSION

There are no cultural or heritage resources located within the Dukuduku project area and as such, the proposed development will not have a negative impact on any heritage sites. However, depending on the layout of the proposed development, a field assessment on the palaeontological resources that may occur in the project area may potentially need to be conducted to ensure that no palaeontological resources are negatively affected by the proposed development.