

14 Eddie de Beer Street
Dan Pienaar
Bloemfontein
9301

PROSPECTING RIGHT COMBINED WITH A WASTE LICENCE APPLICATION TO PROSPECT FOR CHROME ORE (CR), LG & MG SEAMS TOGETHER WITH PLATINUM GROUP METALS (PGM), NEAR RUSTENBURG ON A CERTAIN PORTION OF THE REMAINING EXTENT, A CERTAIN PORTION OF PORTION 1 & A CERTAIN PORTION OF PORTION 2 OF THE FARM UITVALGROND 105, REGISTRATION DIVISION JQ, NORTH WEST PROVINCE. THE PROPERTY IS LOCATED APPROXIMATELY 18KM NORTH WEST OF RUSTENBURG.

NW30/5/1/3/3/2/1/13418PR

1 BACKGROUND

**Information provided by Milnex*

Milnex CC was contracted by **Acacia Resources (Pty) Ltd** as the independent environmental consultant to undertake the Scoping and EIA process for a Prospecting Right combined with a Waste Licence application to prospect for Chrome Ore (Cr), LG & MG Seams together with Platinum Group Metals (PGM), near Rustenburg on a certain portion of The Remaining Extent, a certain portion of Portion 1 & a certain portion of Portion 2 of the Farm Uitvalgrond 105, Registration Division JQ, North West Province. The property is located approximately 18km North West of Rustenburg.

Table 1: Description of the property	
Farm Name:	<ul style="list-style-type: none"> A certain portion of the remaining extent of the farm Uitvalgrond 105 Registration Division: JQ Title deed: T123395/2001 Province: North-West A certain portion of portion 1 of the farm Uitvalgrond 105 Registration Division: JQ Title Deed: T108393/2008 Province: North-West A certain portion of portion 2 of the farm Uitvalgrond 105 Registration Division: JQ Title Deed: T233/1984BP Province: North-West
Application area (Ha)	421.368661 hectares
Magisterial district:	Bojanala District Municipality Rustenburg Local Municipality
Registration Division	JQ
Distance and direction from nearest town	The property is located approximately 18km north west of Rustenburg.
21-digit Surveyor General Code for each farm portion	1. TOJQ0000000001050000 2. TOJQ0000000001050001 3. TOJQ0000000001050002
Minerals Applied for	Chrome ore (Cr) LG & MG Seams Platinum Group Metals (PGM)
Description of the overall activity. (Indicate Mining Right, Mining Permit, Prospecting right, Bulk Sampling, Production Right, Exploration Right, Reconnaissance permit, Technical co-operation permit, Additional listed activity)	<ul style="list-style-type: none"> Listing Notice 1: GNR 327, Activity 19: The infilling or depositing of any material of more than 10 cubic metres into, or the dredging, excavation, removal or moving of soil, sand, shells, shell grit, pebbles or rock of more than 10 cubic metres from a watercourse; Listing Notice 1, GNR 327, Activity 20 (Amended GNR 517: 2021): "Any activity including the operation of that activity which requires a prospecting right in terms of section 16 of the Mineral and Petroleum Resources Development Act, as well as any other applicable activity as contained in this Listing Notice or in Listing Notice 3 of 2014, required to exercise the prospecting right" Listing Notice 1, GNR 327, Activity 24: "The development of a road – with a reserve wider than 13,5 meters, or where no reserve exists where the road is wider than 8 metres" Listing Notice 1, GNR 327, Activity 27: "The clearance of an area of 1 hectares or more, but less than 20 hectares of indigenous vegetation." Listing Notice 2, GNR 325, Activity 19 (As Amended GNR 517: 2021): "The removal and disposal of minerals which

	<p>requires permission contemplated in terms of section 20 of the Mineral and Petroleum Resources Development Act, as well as any other applicable activity as contained in this Listing Notice, Listing Notice 1 of 2014 or in Listing Notice 3 of 2014, required to exercise the permission.</p> <ul style="list-style-type: none"> Listing Notice 3 GNR 324, Activity 12(h) (iv): The clearance of an area of 300 square metres or more of indigenous vegetation (h) North West (vi) Areas within a watercourse or wetland, or within 100 metres from the edge of a watercourse or wetland. <p>NEM:WA 59 of 2008:</p> <ul style="list-style-type: none"> Residue stockpiles or residue deposits, Category A: (15) The establishment or reclamation of a residue stockpile or residue deposit resulting from activities which require a prospecting right or mining permit, in terms of the Mineral and Petroleum Resources Development Act, 2002 (Act No. 28 of 2002). <p>Prospecting right with bulk samples for the prospecting of Chrome ore (Cr): LG & MG Seams and Platinum Group Metals (PGM) including associated infrastructure, structure and earthworks.</p>
--	---

Table 2: Farm Co-Ordinates		
FARM	LATITUDE	LONGITUDE
A certain portion of the remaining extent of the farm Uitvalgrond 105 A certain portion of Portion 1 of the farm Uitvalgrond 105 A certain portion of Portion 2 of the farm Uitvalgrond 105	27° 08' 15,297" E	25° 28' 48,032" S
	27° 09' 37,902" E	25° 27' 56,361" S
	27° 09' 15,402" E	25° 28' 56,877" S
	27° 09' 10,532" E	25° 30' 58,579" S
	27° 08' 52,848" E	25° 29' 54,606" S
	27° 08' 44,215" E	25° 29' 33,004" S

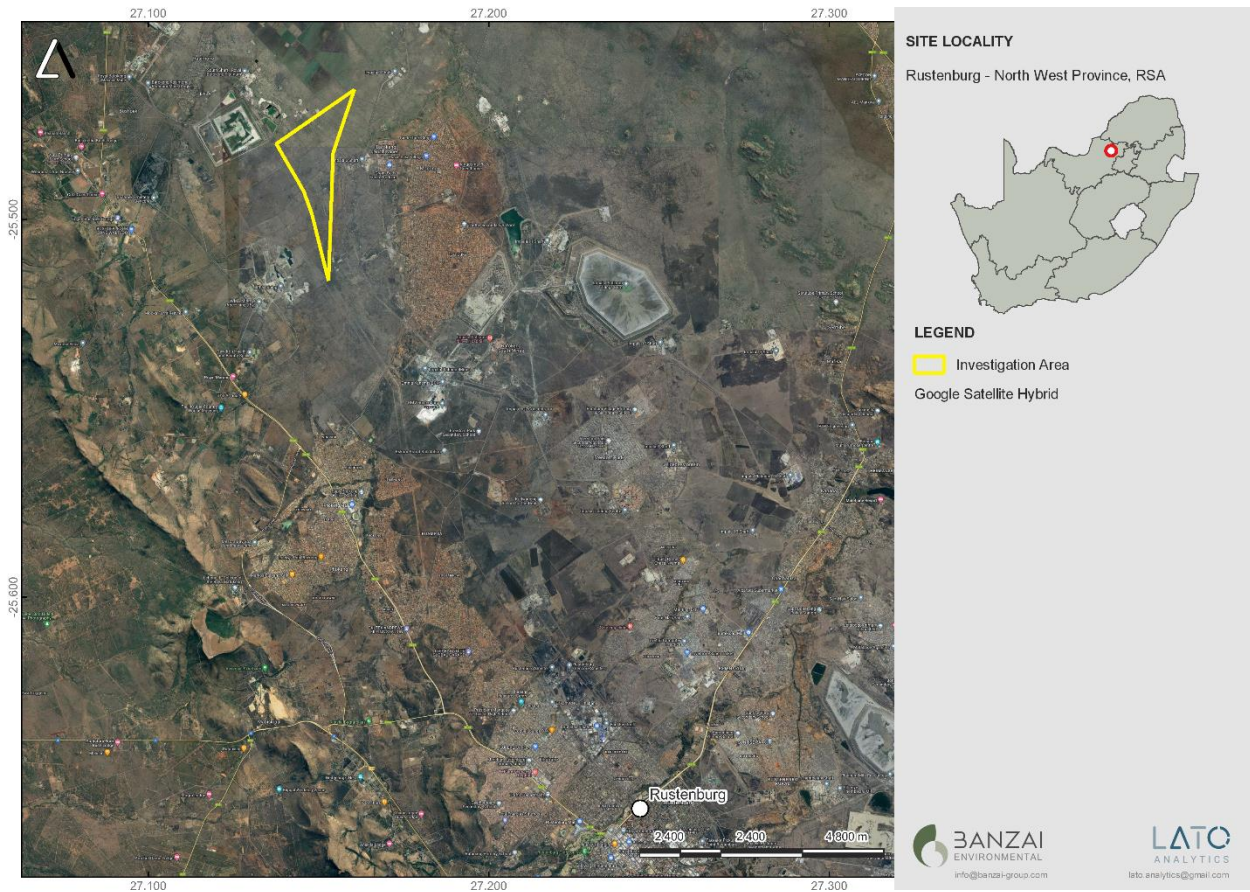


Figure 1. Google Earth (2022) Image of the Prospecting Right combined with a Waste Licence application to prospect for Chrome Ore (Cr), LG & MG Seams together with Platinum Group Metals (PGM), near Rustenburg on a certain portion of The Remaining Extent, a certain portion of Portion 1 & a certain portion of Portion 2 of the Farm Uitvalgrond 105, Registration Division JQ, North West Province.

[illegible]

Figure 2. Locality map of the proposed mining application.

2 QUALIFICATIONS AND EXPERIENCE OF THE AUTHOR

Mrs Elize Butler has conducted approximately 400 palaeontological impact assessments for developments in the Free State, KwaZulu-Natal, Eastern, Central, and Northern Cape, Northwest, Gauteng, Limpopo, and Mpumalanga. She has an MSc in Zoology (*cum laude*) (specializing in Palaeontology) from the University of the Free State, South Africa and has been working in Palaeontology for more than twenty-nine years. She has experience in locating, collecting, and curating fossils. She has been a member of the Palaeontological Society of South Africa (PSSA) since 2006 and has been conducting PIAs since 2014.

3 GEOLOGY AND PALAEONTOLOGY

The proposed Prospecting Right combined with a Waste Licence application to prospect for Chrome Ore (Cr), LG & MG Seams together with Platinum Group Metals (PGM), near Rustenburg on a certain portion of The Remaining Extent, a certain portion of Portion 1 and a certain portion of Portion 2 of the Farm Uitvalgrond 105, Registration Division JQ, North West Province is depicted on the 1:250 000 Rustenburg 2526 (1981) Geological Map, Council for Geosciences, Pretoria) (**Figure 4**).

According to this map, the proposed development is underlain by sediments of the Rustenburg Layered Suite, Bushveld Complex. The updated Geology (Council for Geosciences, Pretoria) (**Figure 5**) also indicates that the proposed development is underlain by the Rustenburg Layered Suite, Bushveld Complex. According to the PalaeoMap of the South African Heritage Resources Information System (SAHRIS) the Palaeontological Sensitivity of the Rustenburg Layered Suite is Zero (**Figure 6**; Almond *et al*, 2013; SAHRIS website). This correlates to the fact that the sediments of the Bushveld Complex are igneous in origin and thus unfossiliferous.

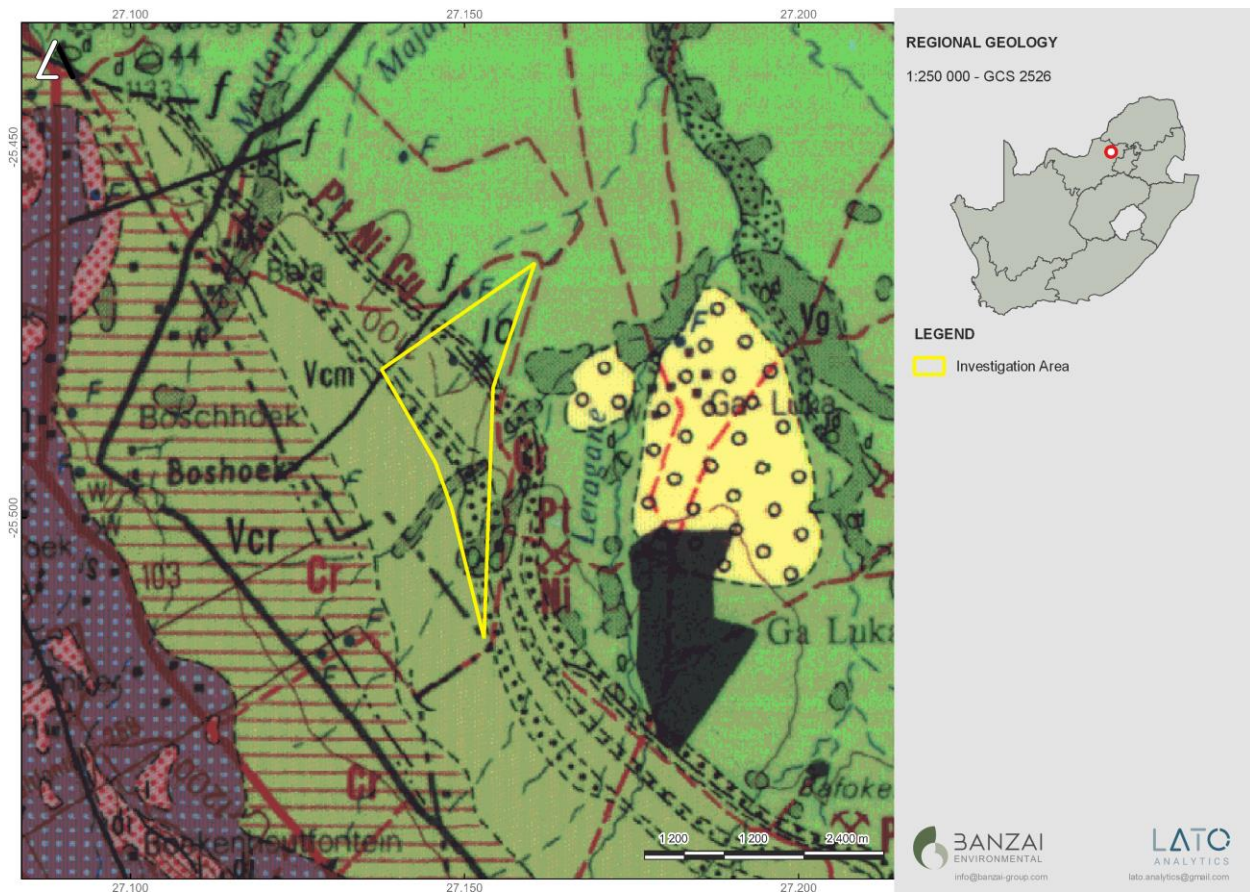
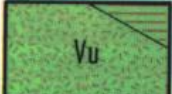
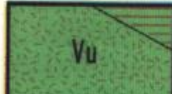
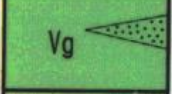
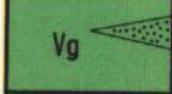
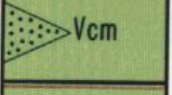
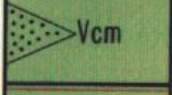
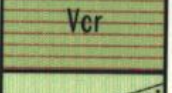
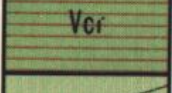
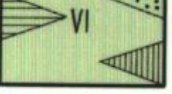
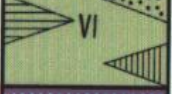


Figure 3: Extract of the 1:250 000 Rustenburg 2526 (1981) Geological Map, Council for Geosciences, Pretoria). The proposed development is underlain by the Rustenburg Layered Suite, Bushveld Complex.

Table 3: Legend (modified) of the 1: 250 000 Kuruman 2722 (1979) Geological Map (Council of Geosciences, Pretoria).

		Bierkraal Magnetite Gabbro Bierkraalmagnetietgabbro
		Pyramid Gabbro-norite Pyramidgabbro-noriet
		Mathlagame Norite-anorthosite Mathlagame-noriet-anortosiet
		Ruighoek Pyroxenite Ruighoekpirokseniet
		Tweelaagte Bronzitite, Groenfontein Harzburgite, Makgope Bronzitite, Eerlyk Bronzitite and Kroondal Norite † Tweelaagtebronzitiet, Groenfonteinharzburgiet, Makgopebronzitiet, Eerlykbronzitiet en Kroondalnoriet †

RUSTENBURG LAYERED SUITE
 GELAAGDE SUITE RUSTENBURG

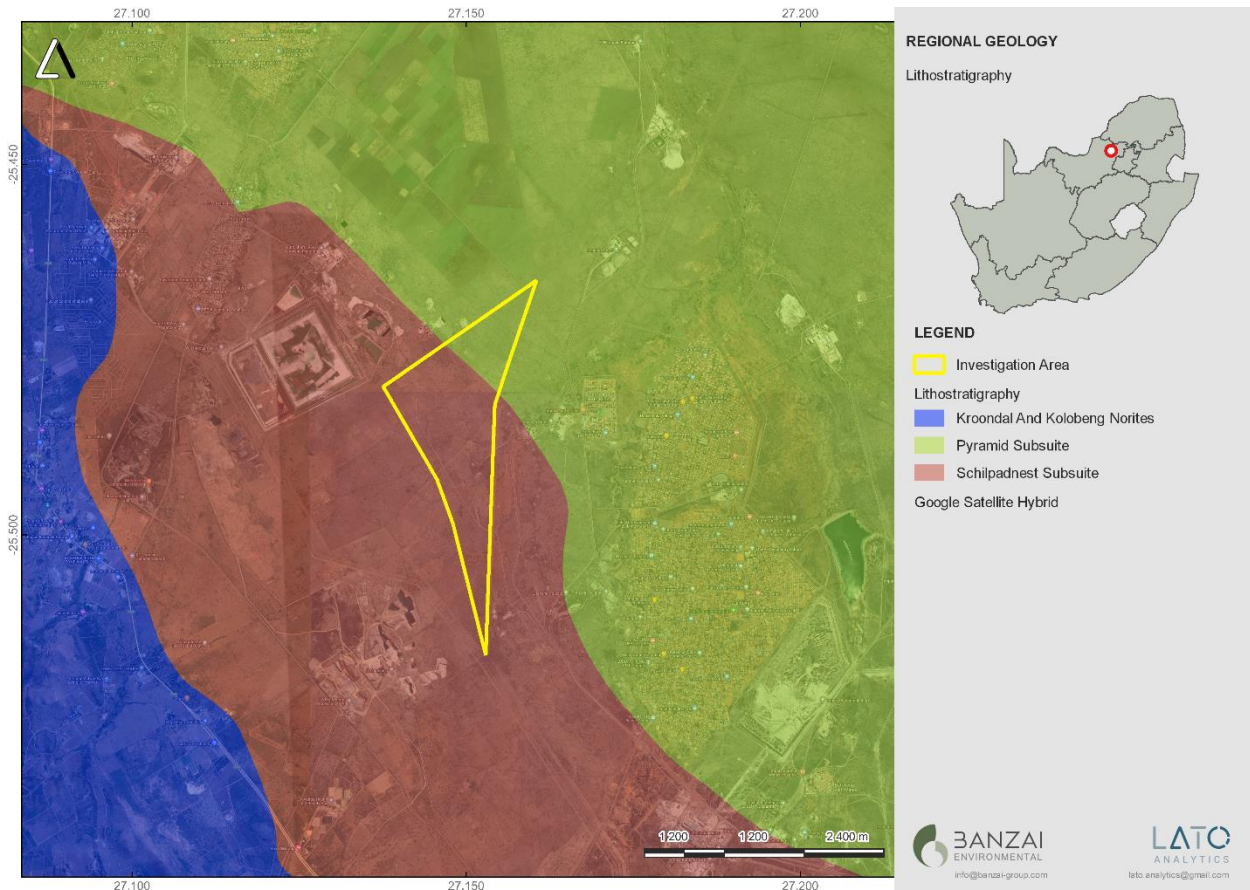


Figure 4: Updated Geology (Council for Geoscience, Pretoria) indicates study area is underlain by the Pyramid and Schilpadnest Subsuite (Rustenburg Layered Suite, Bushveld Complex).

The SAHRIS Palaeosensitivity map (**Figure 6**) indicates that the development is underlain by sediments with a Zero (grey) Palaeontological Significance. No Palaeontological Studies is thus required (**Table 4**).

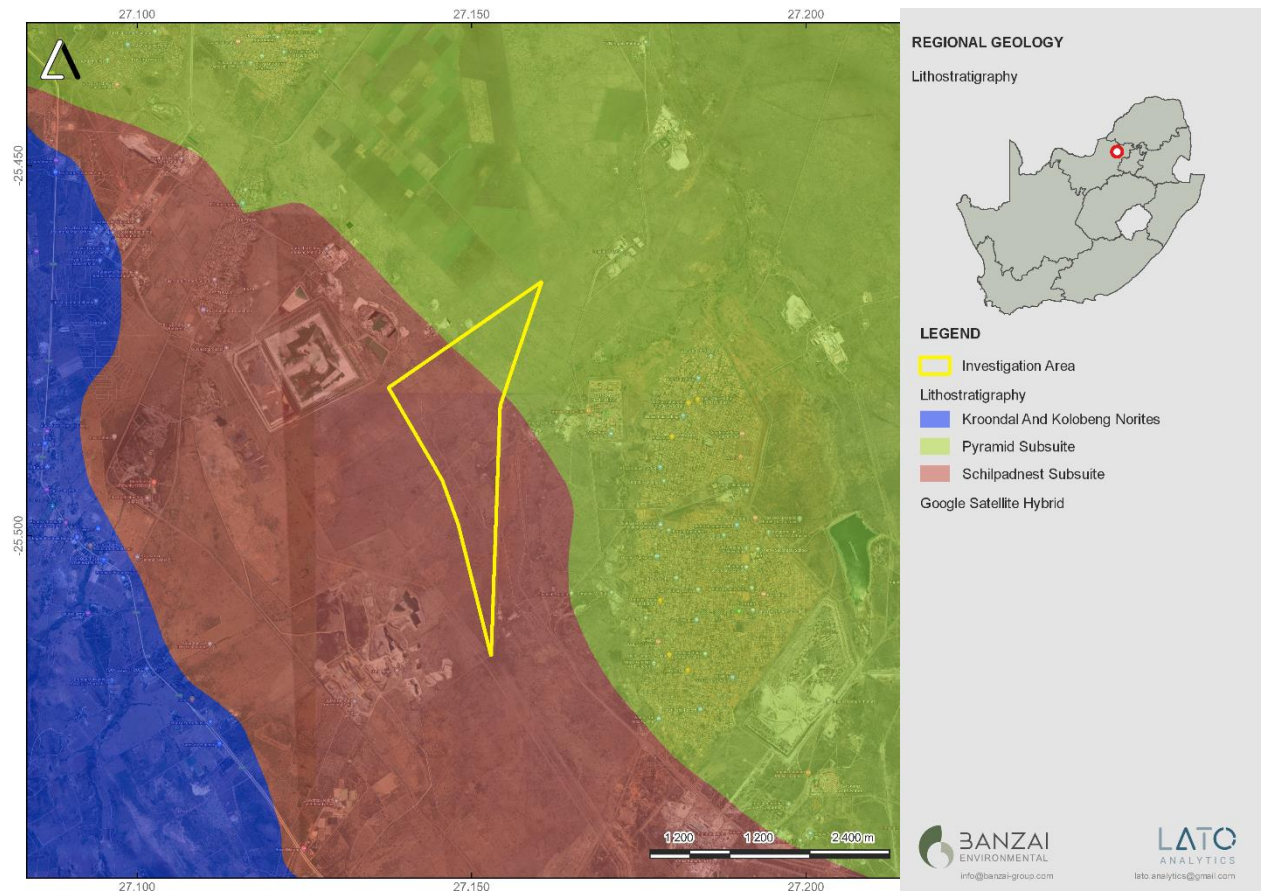


Figure 5: Extract of the 1 in 250 000 SAHRIS PalaeoMap (Council of Geosciences).

Table 4: Palaeontological Sensitivity according to the SAHRIS PalaeoMap (Almond et al, 2013; SAHRIS website)

Colour	Sensitivity	Required Action
RED	VERY HIGH	Field assessment and protocol for finds is required
ORANGE/YELLOW	HIGH	Desktop study is required and based on the outcome of the desktop study; a field assessment is likely
GREEN	MODERATE	Desktop study is required
BLUE	LOW	No palaeontological studies are required however a protocol for finds is required
GREY	INSIGNIFICANT/ZERO	No palaeontological studies are required
WHITE/CLEAR	UNKNOWN	These areas will require a minimum of a desktop study. As more information comes to light, SAHRA will continue to populate the map.

3.1 National Heritage Resources Act (25 of 1999) (NHRA)

Cultural Heritage in South Africa, includes all heritage resources, is protected by the National Heritage Resources Act (Act 25 of 1999) (NHRA). Heritage resources as defined in Section 3 of the Act include **“all objects recovered from the soil or waters of South Africa, including archaeological and palaeontological objects and material, meteorites and rare geological specimens”**.

Palaeontological heritage is unique and non-renewable and is protected by the NHRA. Palaeontological resources may not be unearthed, broken moved, or destroyed by any development without prior assessment and without a permit from the relevant heritage resources authority as per section 35 of the NHRA.

This Palaeontological Impact Assessment was undertaken as part of this proposed amendment and adheres to the conditions of the Act. According to **Section 38 (1)** of the NHRA, a HIA is required to assess any potential impacts to palaeontological heritage within the development footprint where:

- the construction of a road, wall, power line, pipeline, canal or other similar form of linear development or barrier exceeding 300m in length;
- the construction of a bridge or similar structure exceeding 50m in length;
- any development or other activity which will change the character of a site—

- a. exceeding 5 000 m² in extent; or
 - b. involving three or more existing erven or subdivisions thereof; or
 - c. involving three or more erven or divisions thereof which have been consolidated within the past five years; or
 - d. the costs of which will exceed a sum set in terms of regulations by SAHRA or a provincial heritage resources authority
 - e. the re-zoning of a site exceeding 10 000m² in extent.
- or any other category of development provided for in regulations by SAHRA or a Provincial heritage resources authority.

4 CONCLUSION

The proposed Mining development on a certain portion of the Remaining Extent, a certain portion of Portion 1 and a certain portion of Portion 2 of the Farm Uitvalgrond 105, Registration Division JQ, North West Province is underlain by sediments of the Rustenburg Layered Suite, Bushveld Complex. According to the PalaeoMap of the South African Heritage Resources Information System (SAHRIS) the Palaeontological Sensitivity of the Rustenburg Layered Suite, Bushveld Complex is Zero (Almond *et al*, 2013; SAHRIS website). This correlates with the fact that the sediments of the Bushveld Complex are igneous in origin and thus unfossiliferous. For this reason, an overall Zero Palaeontological Sensitivity is allocated to the development footprint. Thus, the construction of the development may be authorised in its whole extent, as the development footprint is not considered sensitive in terms of palaeontological resources.

Yours sincerely



Elize Butler