

Exemption of a Phase 1 Heritage Impact Assessment for the proposed expansion of chicken houses on the farm Daniels Kuil 393/RE, Bloemfontein Free State Province*.

Farm: Daniels Kuil 393/RE
District: Bloemfontein
Map Ref.: 2925BB De Brug

Proposed development calls for the expansion of chicken houses covering an approximately 3 ha area on the farm Daniels Kuil 393/RE, which is situated about thirty-two kilometres northwest of Bloemfontein (**Fig. 1; Table 1**). The proposed structures will be erected on land formerly altered by modern farming activities (**Fig. 2**) and existing dirt tracks will provide access to the sites (**Fig. 3**). Potential archaeological impact at each of the proposed site is considered to be non-existent.

Underlying geology at the site consist of palaeontologically insignificant dolerite intrusions bounded by potentially fossil-bearing Beaufort Group (Adelaide Subgroup) strata. Superficial sediments are made up of Quaternary wind-blown sands. The likelihood of palaeontological impact on bedrock sediments underneath the agricultural overburden is considered to be extremely low.

It is recommended that the proposed development is exempt from a Phase 1 Heritage Impact Assessment.

Yours truly,



Dr Lloyd Rossouw
Archaeological Impacts Unit
National Museum Bloemfontein
Tel. 051 4479 609
Cell. 0842505992
lloyd@nasmus.co.za

***Report prepared for EKO Environmental Consultants, 21 Dromedaris Street Dan Pienaar, Bloemfontein 9301**

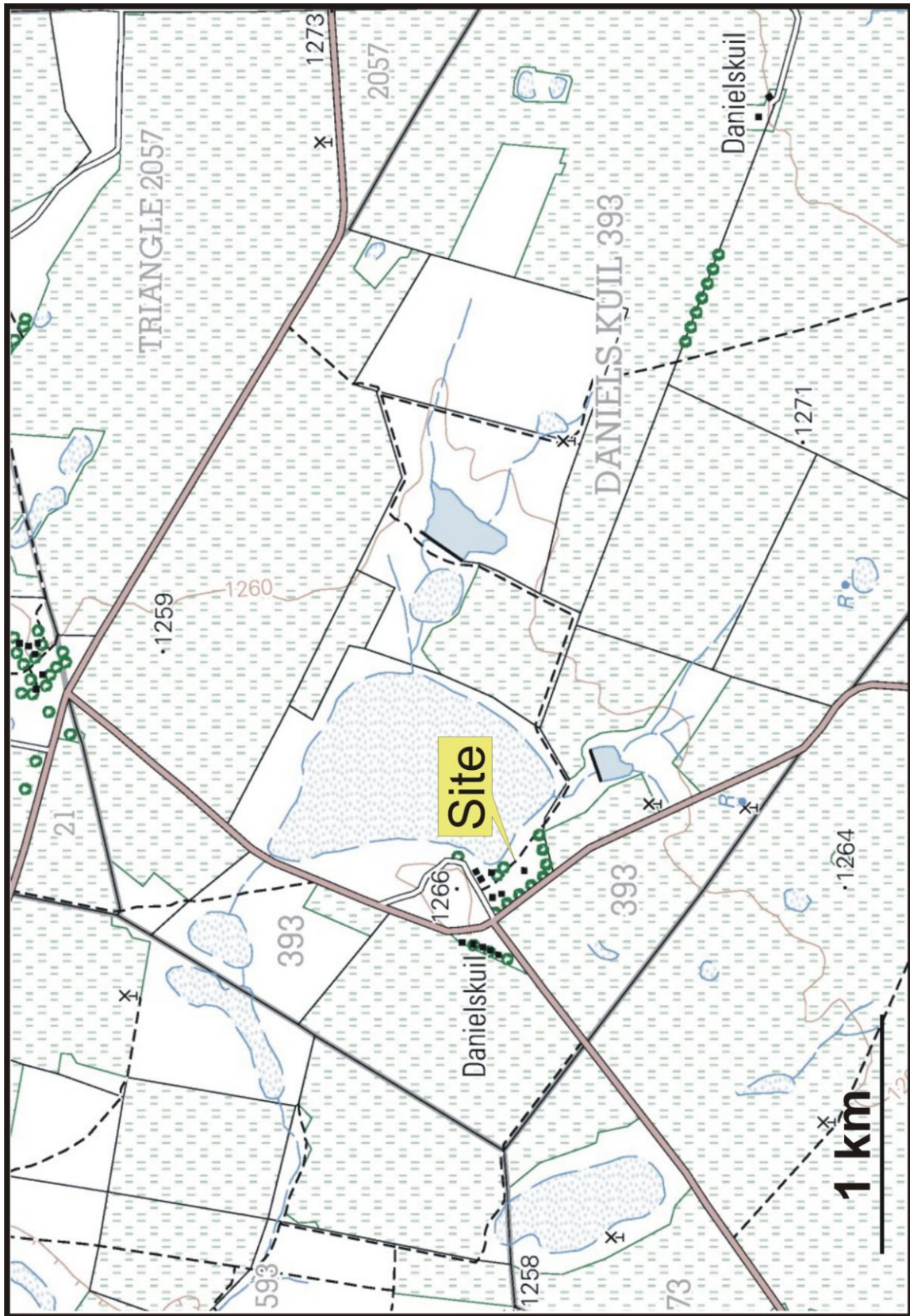


Figure 1. Map of Danielskuil 393/RE (portion of 1:50 000 scale topographic map 2925 BB De Brug).

Table 1. Site coordinates.

	Coordinates	
A	29° 1'49.21"S	25°53'31.61"E
B	29° 1'56.80"S	25°53'38.93"E
C	29° 1'58.53"S	25°53'34.59"E
D	29° 1'51.33"S	25°53'28.47"E



Figure 2. View of the terrain demarcated for the proposed expansion of the chicken houses.

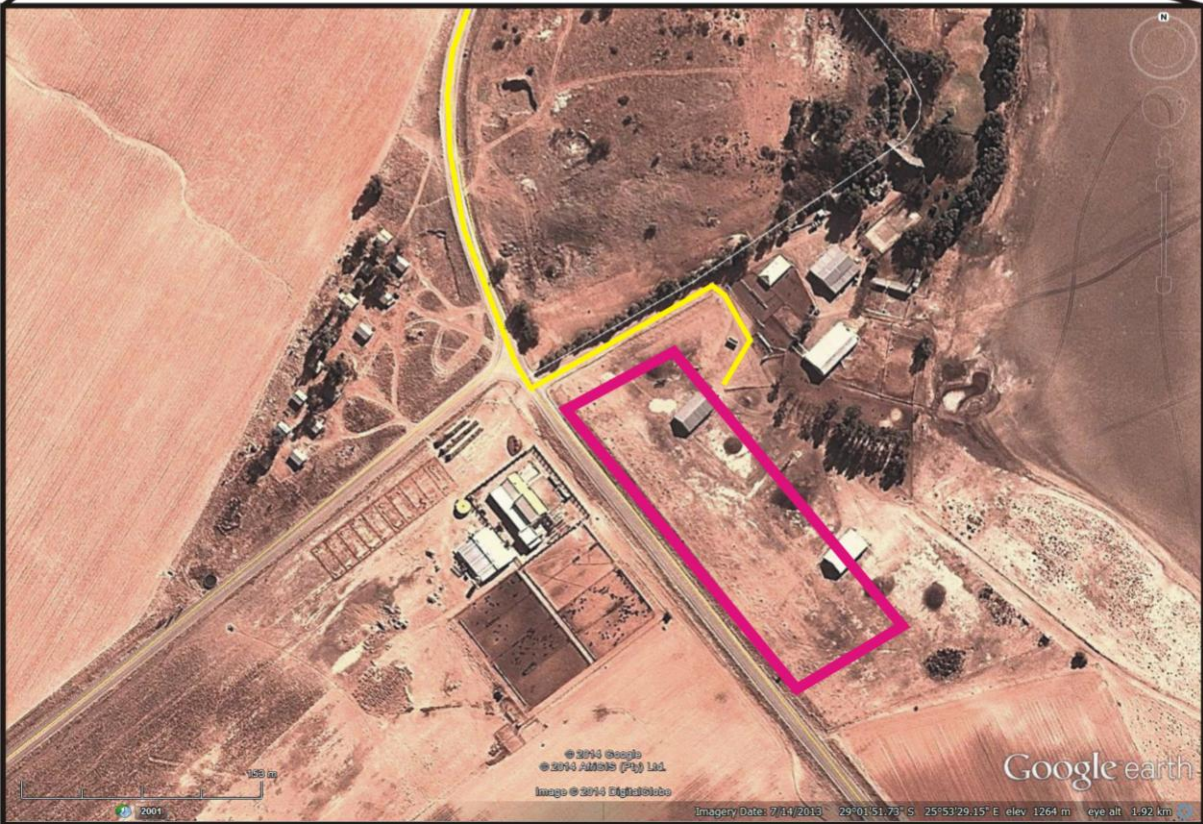
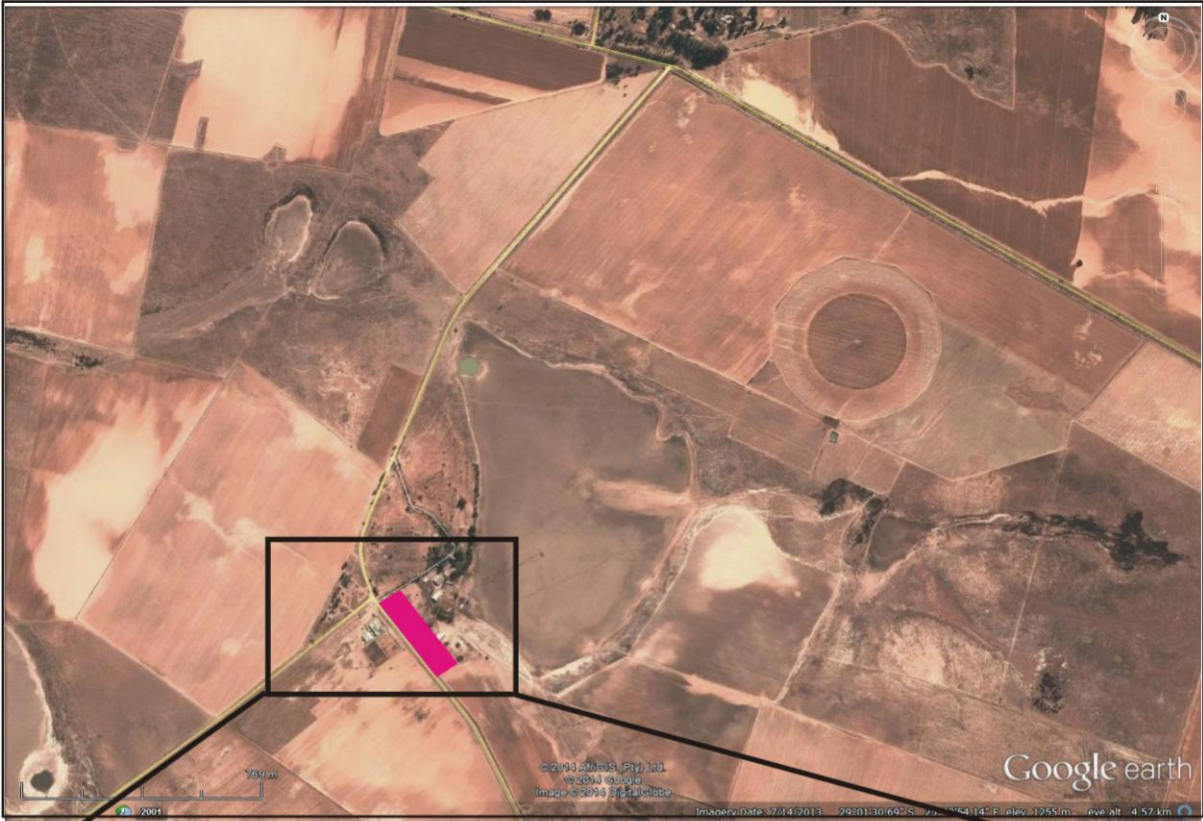


Figure 3. Aerial view of the proposed development area.