

Exemption of a Phase 1 Heritage Impact Assessment for the proposed expansion of chicken houses on the farm Opdiekoppie 2904, Bloemfontein Free State Province*.

Farm: Opdiekoppie 2904
District: Bloemfontein
Map Ref.: 2925BB De Brug

Proposed development calls for the expansion of chicken houses for egg production, covering an approximately 1 ha area on the farm Opdiekoppie 2904, which situated about 25 kilometres west-northwest of Bloemfontein (**Fig. 1; Table 1**). The proposed structures will be erected on land formerly altered by modern farming activities (**Fig. 2**) and existing dirt tracks will provide access to the sites (**Fig. 3**). Potential archaeological impact at each of the proposed site is considered to be non-existent.

Underlying geology at the site consist of potentially fossil-bearing Beaufort Group (Adelaide Subgroup) strata. Superficial sediments are made up of Quaternary wind-blown sands. The likelihood of palaeontological impact on bedrock sediments underneath the agricultural overburden is considered to be extremely low.

It is recommended that the proposed development is exempt from a Phase 1 Heritage Impact Assessment.

Yours truly,



Dr Lloyd Rossouw
Archaeological Impacts Unit
National Museum Bloemfontein
Tel. 051 4479 609
Cell. 0842505992
lloyd@nasmus.co.za

***Report prepared for EKO Environmental Consultants, 21 Dromedaris Street Dan Pienaar, Bloemfontein 9301**

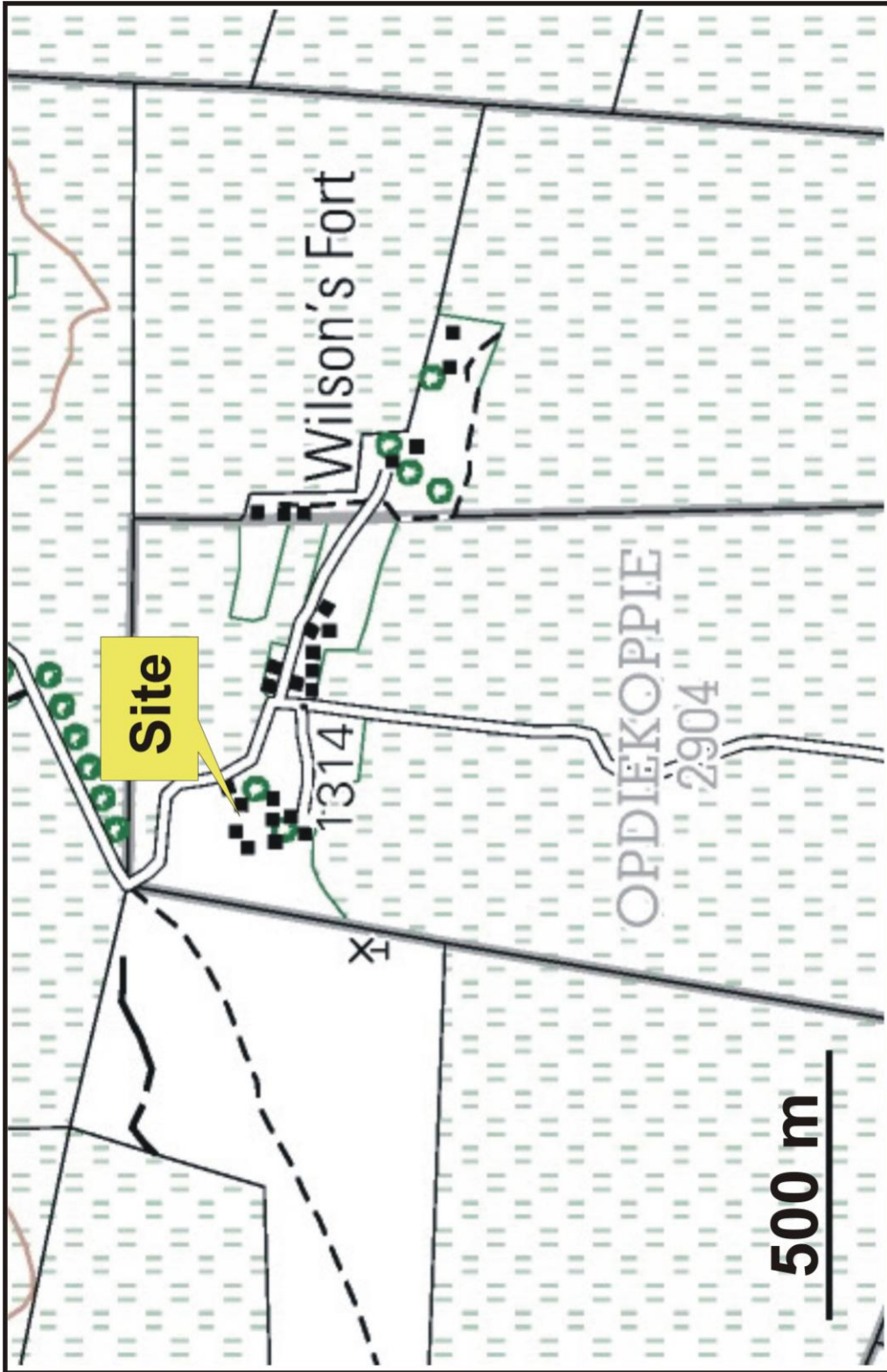


Figure 1. Map of farm Opdiekoppie 2904 (portion of 1:50 000 scale topographic map 2925BB De Brug).

Table 1. Site coordinates.

	Coordinates	
A	29° 3'21.00"S	25°57'10.09"E
B	29° 3'21.22"S	25°57'13.88"E
C	29° 3'23.18"S	25°57'13.74"E
D	29° 3'22.74"S	25°57'9.81"E



Figure 2. View of the affected area.

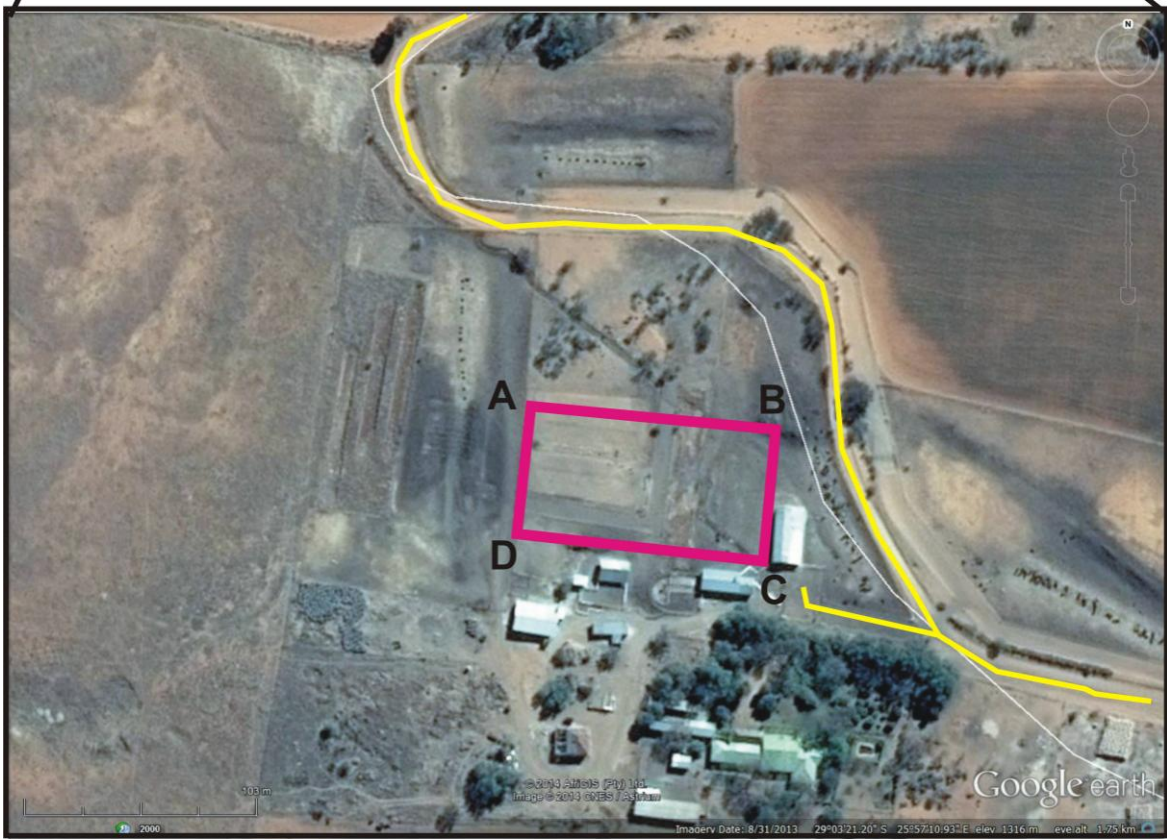


Figure 3. Aerial view of the proposed development area.