

Phase 1 Heritage Impact Assessment for proposed
new powerline on farms Boegoeberg 48 and
Rooisand 387 near Groblershoop, NC Province.

Report prepared by
Paleo Field Services
PO Box 38806
Langenhovenpark
9330

November 2022

SUMMARY

A Phase 1 Heritage Impact Assessment was carried out for a proposed new 3.5 km long powerline to be constructed between the farms Boegoeberg 48 and Rooisand 387 near Groblershoop in the Northern Cape Province. The proposed footprint crosses the Orange Rivier, about 2 km northwest of Groblershoop, covering flat to undulating terrain, incised by shallow alluvial features draining into the Orange River. The footprint is underlain by metavolcanic-metasedimentary bedrock of the Groblershoop Formation (Brulpan Group, Namaqua–Natal Province). The Brulpan Group has an approximate age of ~ 2000 -1780 Ma and consists almost exclusively of quartz-muscovite schist and metaquartzites, not considered to be palaeontological significant. The proposed footprint is primarily traverses metavolcanic-metasedimentary rocks, capped by a thin veneer of bedrock – derived, gritty to gravelly top soils on the high ground, with localized surface limestones and sheetwash / alluvium predominating low-lying drainage lines. Impact on potential palaeontological heritage resources within floodplain deposits (alluvium, left & right bank of the river) is considered low as it has been severely degraded by modern farming and commercial activities. No evidence was found of *in situ* Stone Age archaeological material, either as capped assemblages or distributed as *intact* surface scatters on the landscape within the boundaries of the proposed linear development. Low density (< 1 / 100 m) isolated finds include weathered, cf. LSA flakes and associated debitage made on banded ironstone. There are no indications of rock art (engravings), stonewalled structures or historically significant buildings older than 60 years, or aboveground evidence of graves or cairns within the boundary of the proposed linear footprint. Given the nature of the underlying geology, potential impact on rock engraving sites within the study area is considered unlikely. The proposed development footprint and associated access road are not considered palaeontologically or archaeologically vulnerable and is assigned a site rating of Generally Protected C.

TABLE OF CONTENTS

Summary	2
Introduction	3
Locality data	5
Background	5
Field Assessment.....	7
Impact Statement and Recommendation	7
References	7
Tables and Figures	9
Appendix 1: Track Log.....	18

INTRODUCTION

A Phase 1 Heritage Impact Assessment was carried out for a proposed new 3.5 km long powerline to be constructed between the farms Boegoeberg 48 and Rooisand 387 near Groblershoop in the Northern Cape Province (**Fig. 1**). The region's unique and non-renewable archaeological and palaeontological heritage sites are 'Generally' protected in terms of the National Heritage Resources Act (Act No 25 of 1999, section 35) and may not be disturbed at all without a permit from the relevant heritage resources authority. As many such heritage sites are threatened daily by development, both the environmental and heritage legislation require impact assessment reports that identify all heritage resources including archaeological and palaeontological sites in the area to be developed, and that make recommendations for protection or mitigation of the impact of the sites.

The primary legal trigger for identifying when heritage specialist involvement is required in the Environmental Impact Assessment process is the National Heritage Resources (NHR) Act (Act No 25 of 1999). The NHR Act requires that all heritage resources, that is, all places or objects of aesthetic, architectural, historical, scientific, social, spiritual, linguistic or technological value or significance are protected. Thus any assessment should make provision for the protection of all these heritage components, including archaeology, battlefields, graves, and structures over 60 years of age, living heritage and the collection of oral histories, historical settlements, landscapes, geological sites, palaeontological sites and objects.

The Act identifies what is defined as a heritage resource, the criteria for establishing its significance and lists specific activities for which a heritage specialist study may be

required. In this regard, categories of development listed in Section 38 (1) of the NHR Act are:

- The construction of a road, wall, power line, pipeline, canal or other similar form of linear development or barrier exceeding 300m in length;
- The construction of a bridge or similar structure exceeding 50m in length;
- Any development or other activity which will change the character of the site;
- Exceeding 5000 m² in extent;
- Involving three or more existing erven or subdivisions thereof;
- Involving three or more subdivisions thereof which have been consolidated within the past five years;
- Costs of which will exceed a sum set in terms of regulations by the South African Heritage Resources Agency (SAHRA).
- The rezoning of a site exceeding 10 000 m².
- Any other category of development provided for in regulations by the South African Heritage Resources Agency (SAHRA).

The involvement of the heritage specialist in such a process is usually necessary when a proposed development may affect a heritage resource, whether it is formally protected or unprotected, known or unknown. In many cases, the nature and degree of heritage significance is largely unknown pending further investigation (e.g. capped sites, assemblages or subsurface fossil remains). It is also possible that a site may contain heritage resources (e.g. structures older than 60 years), with little or no conservation value. In most cases it will be necessary to engage the professional opinion of a heritage specialist in determining whether or not further heritage specialist input in an EIA process is required. This may involve site-significance classification standards as prescribed by SAHRA (2005).

Methodology

The significance of the affected area was evaluated using existing field data, database information and published literature. This was followed by a field assessment (site visit) of the affected areas. A Garmin Etrex Vista GPS hand model (set to the WGS 84 map datum) and a digital camera were used for recording purposes. Relevant archaeological and palaeontological information, maps, Google Earth images and site records were integrated with data acquired during the on-site inspection.

Terms of reference:

- Identify and map possible heritage sites and occurrences using available resources.

- Determine and assess the potential impacts of the proposed development on potential heritage resources;
- Recommend mitigation measures to minimize potential impacts associated with the proposed development.

Archaeological rating of the footprints followed SAHRA-prescribed field rating categories listed in **Table 1**.

LOCALITY DATA

1 : 50 000 scale topographic maps 2821DD Groblershoop & 2822CC Boegoeberg

1 : 250 000 scale geological map 2822 Postmasburg

The proposed footprint crosses the Orange Rivier, about 2 km northwest of Groblershoop, on farms Boegoeberg 48 and Rooisand 387 (**Fig. 2**). The study area lies on flat to undulating terrain, incised by shallow alluvial features draining into the Orange River. (**Fig. 3**).

General site coordinates of the proposed development footprint (see **Fig. 2**):

- A) 28°52'54.91"S 21°58'22.60"E
- B) 28°52'45.75"S 21°58'15.06"E
- C) 28°52'36.91"S 21°58'35.44"E
- D) 28°52'28.53"S 21°59'0.18"E
- E) 28°52'27.20"S 21°59'22.53"E
- F) 28°51'58.43"S 21°59'50.22"E

BACKGROUND

Palaeontology

Potential palaeontological occurrences: Late Neogene vertebrate fossils associated with intact river terrace gravels and surface limestones; Quaternary vertebrate fossils associated with Pleistocene alluvial deposits

According to the 1:250 000 geological map 2822 Postmasburg, the study area is underlain by metavolcanic-metasedimentary bedrock of the Groblershoop Formation (Brulpan Group, Namaqua–Natal Province) with geologically recent alluvial overbank sediments flanking the current flow of the Orange River (**Fig. 4**). The Brulpan Group has an approximate age of ~ 2000 -1780 Ma and consists almost exclusively of quartz-muscovite schist and metaquartzites (Cornell et al. 2006). Given the metavolcanic-

metasedimentary nature of the strata, the Brulpan Group is not considered to be palaeontological significant (Fig. 5).

Archaeology

Potential archaeological occurrences: Intact Stone Age open sites; burial cairns, unmarked graves, kraals & historical stone – built structures

The Middle Orange River and Bushmanland regions have been populated more or less continuously during prehistoric times (Beaumont *et al.* 1995). According to Beaumont (1986) archaeological visibility in the region was high during the Last Glacial Maximum, a viewpoint that is in contrast to that indicated for southern Africa as a whole (Deacon and Thackeray 1984). Early Stone Age artefacts have been recorded *in situ* at Kalkgaten on the farm Ratel Draai, while Middle Stone Age and Later Stone Age sequences have been recorded from a number of cave sites on the farms Zoovorbij, Droëgrond and Waterval in the Upington district (Beaumont *et al.* 1995). Archaeological and historical evidence also show that the region was extensively occupied by Khoi herders and San hunter-gatherers during the last 2000 years (Smith 1995). The principal Khoikhoi inhabitants of the Middle Orange River were the Einiqua who belonged to the same language group as the Namaqua and Korana, namely the Orange River Khoikhoi (Penn 2005). The Einiqua occupied the area around and east of the Augrabies Falls while the Korana occupied the Middle-Upper Orange River further to the east. A large number of burial cairns were excavated near the Orange River in the Kakamas area and appear to be related to Korana herders (Morris 1995).

The characteristics of the terrain and underlying geology suggest that impact on potential rock art localities is highly unlikely.

The Groblershoop area was also previously occupied by Tswana-speaking (Tlhaping and Tlharo) communities who settled in the Langeberg region to the northeast throughout the late 18th century. The Tlhaping and Tlharo branches, who entered the northern Cape from the north at the beginning of the 17th century, reached as far south as Majeng (Langeberg), Tsantsabane (Postmasburg) and Tlhake le Tlou (Danielskuil) by the beginning of the 18th century (Snyman 1986). A large Tlhaping settlement was established at Nokaneng, about 85 km northeast of Groblershoop, while the Tlharo largely occupied the Langeberg region between Ditlou (Olifantshoek) and Dibeng (Deben) (Maingard 1933). After clashes with the Koranna, who moved into the area after 1770, the Tlhaping and Tlharo temporarily abandoned Nokanna and the Langeberg at around 1790 to settle around Dithakong (Kuruman) only to return again to the Langeberg at the beginning of the 19th century (Humphreys 1976). With the annexation of the region south of the Molopo and north of Griqualand West by the British in 1885, the area became known as British Bechuanaland. Several reservations were established but following a revolt in 1895 known as the Langeberg Rebellion, the reservations were confiscated by the British colonial government, divided up into farms and offered to white settlers (Snyman 1986).

FIELD ASSESSMENT

Sections 1 and 2 of the proposed powerline footprint traverse metavolcanic-metasedimentary rocks and bedrock – derived, gritty to gravelly top soils, as well as sheetwash/alluvial deposits along in low-lying areas (**Fig. 6 & 7**). Section 3 traverses the river and its adjacent floodplain deposits, the latter severely degraded by modern farming (Section 3 a) and other commercial activities (Section 3 b, **Fig. 6**). No evidence was found of *in situ* Stone Age archaeological material, either as capped assemblages or distributed as *intact* surface scatters on the landscape within the boundaries of the proposed linear development. Low density (< 1 / 100 m) isolated finds include weathered, cf. LSA flakes and associated debitage made on banded ironstone (**Fig 8**). There are no indications of rock art (engravings), stonewalled structures or historically significant buildings older than 60 years, or aboveground evidence of graves or cairns within the boundary of the proposed linear footprint.

IMPACT STATEMENT AND RECOMMENDATION

The proposed development footprint is underlain by palaeontologically insignificant metamorphic rocks. Impact on potential palaeontological heritage resources within floodplain deposits (alluvium, left & right bank of the river) is considered low as it has been severely degraded by modern farming and commercial activities. The field assessment provided no aboveground evidence of prehistoric structures, buildings older than 60 years, or material of cultural significance or *in situ* archaeological sites within the study area. Given the nature of the underlying geology, potential impact on rock engraving sites within the study area is considered unlikely. The proposed development footprint is not considered palaeontologically or archaeologically vulnerable and is assigned a site rating of Generally Protected C (**Table 1**).

REFERENCES

- Beaumont P.B. 1986. Where did all the young men go during 0-18 Stage 2? *Palaeoecology of Africa and the surrounding islands* 17: 79 – 88.
- Beaumont, P.B., Smith, A.B. & Vogel, J.C. 1995. Before the Einiqua: the archaeology of the frontier zone. In: Smith, A.B. (ed.) *Einiqualand: studies of the Orange River frontier*. pp. 236-264. Cape Town: University of Cape Town Press.
- Cornell, D.H., et al., 2006. The Namaqua-Natal Province. . In: Johnson, M.R., Anhaeusser, C.R. and Thomas, R.J., (Eds). *The Geology of South Africa*. Geological Society of South Africa, Johannesburg / Council for Geoscience, Pretoria. Pp 325-379.
- Deacon, H.J. and Thackeray, J.F 1984. *Late Quaternary environmental changes and implications from the archaeological record in southern Africa*. In: J.C. Vogel (ed). *Late Cainozoic Palaeoclimates of the Southern Hemisphere* Balkema, Rotterdam. pp. 375 – 390.

Maingard, L.F. 1933. The Brikwa and the ethnic origins of the BaTlaping. *South African Journal of Science* 30, 597 – 602.

Morris, A.G. 1995. The Einiqua: an analysis of the Kakemas skeletons. In: In: Smith, A.B. (ed.) Einiqualand: studies of the Orange River frontier. pp. 110 - 164. Cape Town: University of Cape Town Press.

Penn, N. 2005. The Forgotten Frontier: Colonist and Khoisan on the Cape's Northern Frontier in the 18th Century. Ohio University Press.

SAHRA, 2005. Minimum Standards for the Archaeological and the Palaeontological Components of Impact Assessment Reports.

Smith, A. 1995. Archaeological observations along the Orange River and its hinterland In: Smith, A.B. (ed.) Einiqualand: studies of the Orange River frontier. pp. 265 - 300. Cape Town: University of Cape Town Press.

Snyman, P.H.R. 1986. Die Langeberg – rebellie en die totstandkoming van Olifantshoek. *Contree* 20: 16 – 26.

DECLARATION OF INDEPENDENCE

Paleo Field Services act as an independent specialist consultant and do not have any financial interest in the undertaking of the activity other than remuneration for work as stipulated in the terms of reference. Paleo Field Services has no interest in secondary or downstream developments as a result of the authorization of this project.

Yours truly'

A handwritten signature in black ink, appearing to read 'P.H.R. Snyman', written in a cursive style.

October 2022

TABLES AND FIGURES

Table 1. Field rating categories as prescribed by SAHRA.

Field Rating	Grade	Significance	Mitigation
National Significance (NS)	Grade 1	-	Conservation; national site nomination
Provincial Significance (PS)	Grade 2	-	Conservation; provincial site nomination
Local Significance (LS)	Grade 3A	High significance	Conservation; mitigation not advised
Local Significance (LS)	Grade 3B	High significance	Mitigation (part of site should be retained)
Generally Protected A (GP.A)	-	High/medium significance	Mitigation before destruction
Generally Protected B (GP.B)	-	Medium significance	Recording before destruction
Generally Protected C (GP.C)	-	Low significance	Destruction

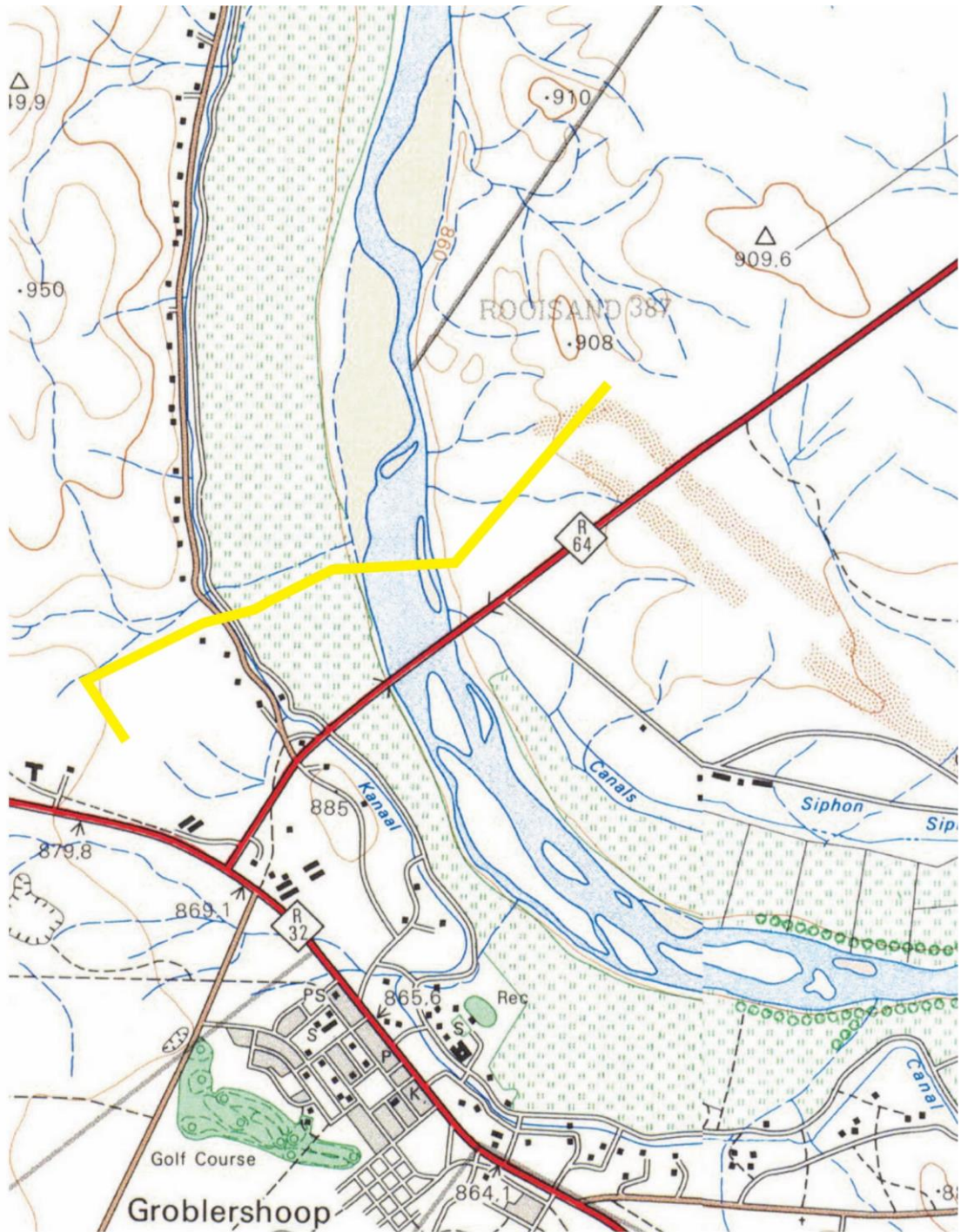


Figure 1. Map of the footprint (yellow line) marked on portions of 1:50 000 scale topographical maps 2821DD Groblershoop & 2822CC Boegoeberg).

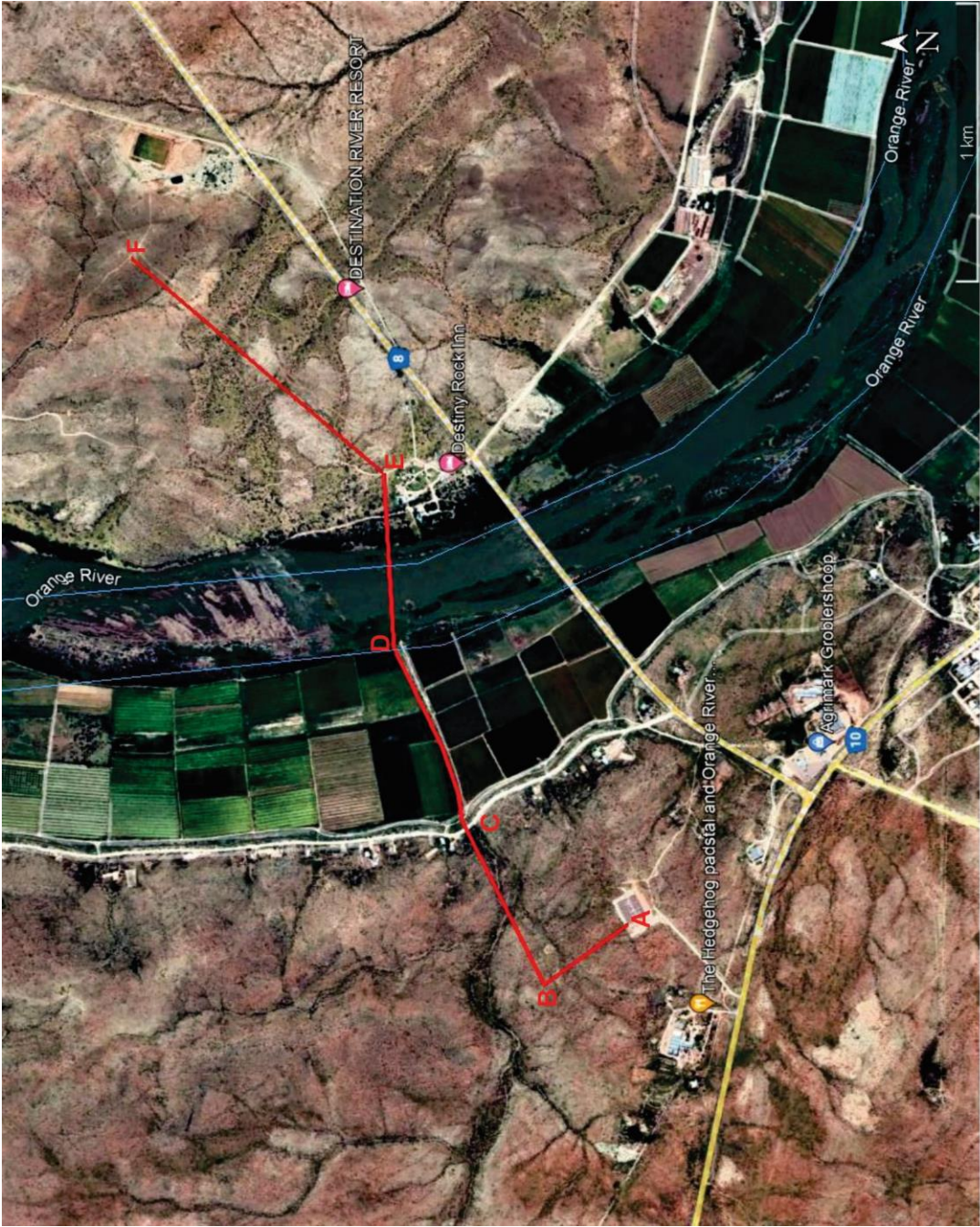


Figure 2. Aerial view and layout of the proposed powerline development.

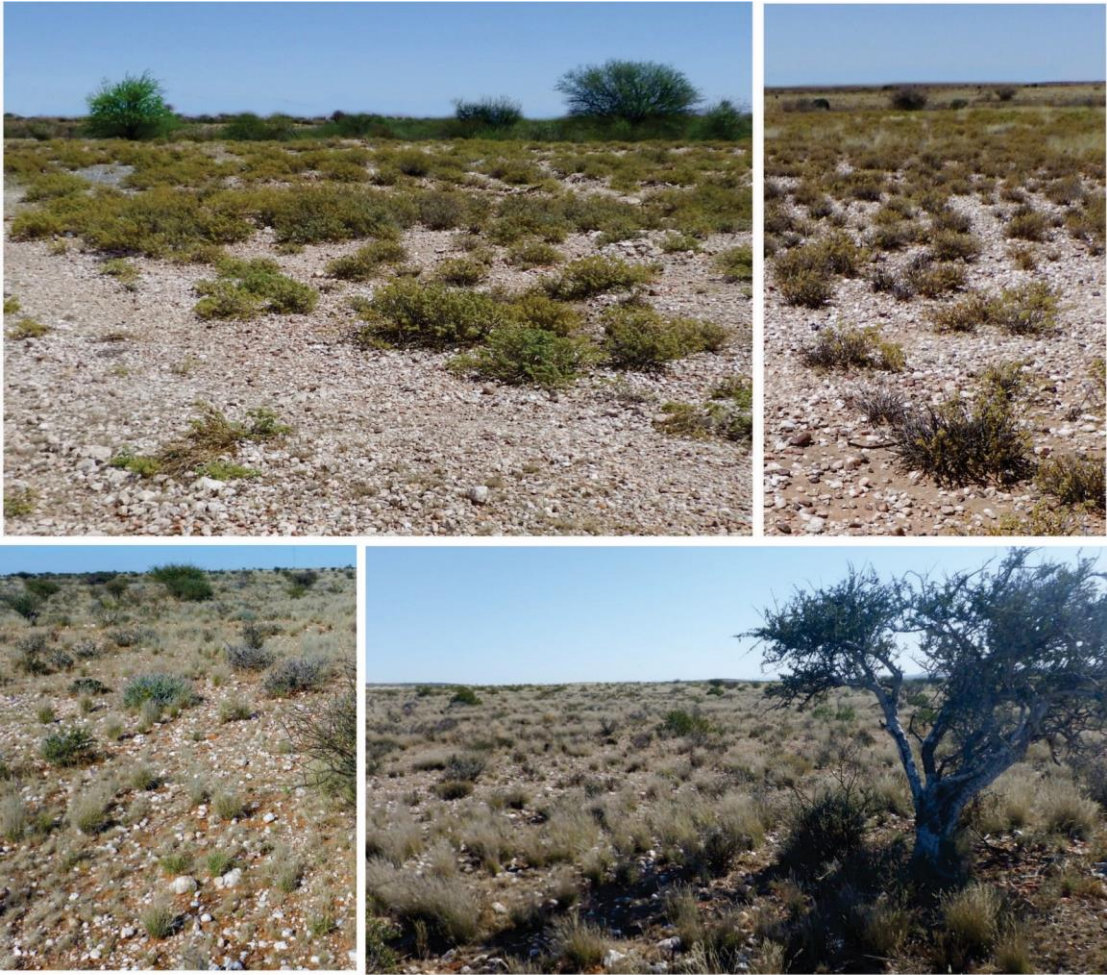


Figure 3. General view of undisturbed terrain, south (above left & right) and north (below left & right) of the Orange River.

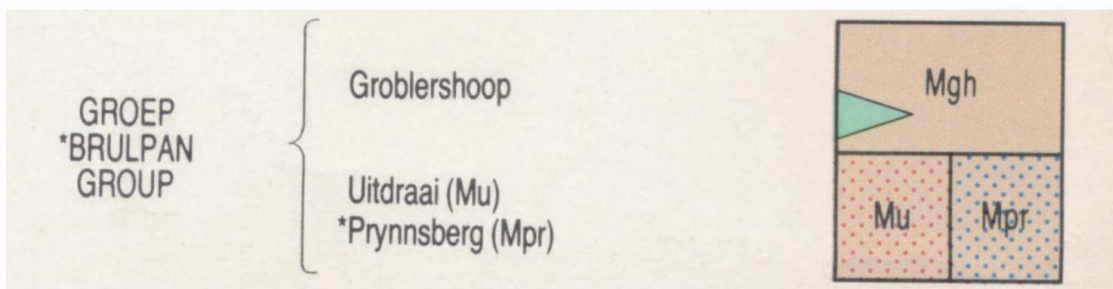
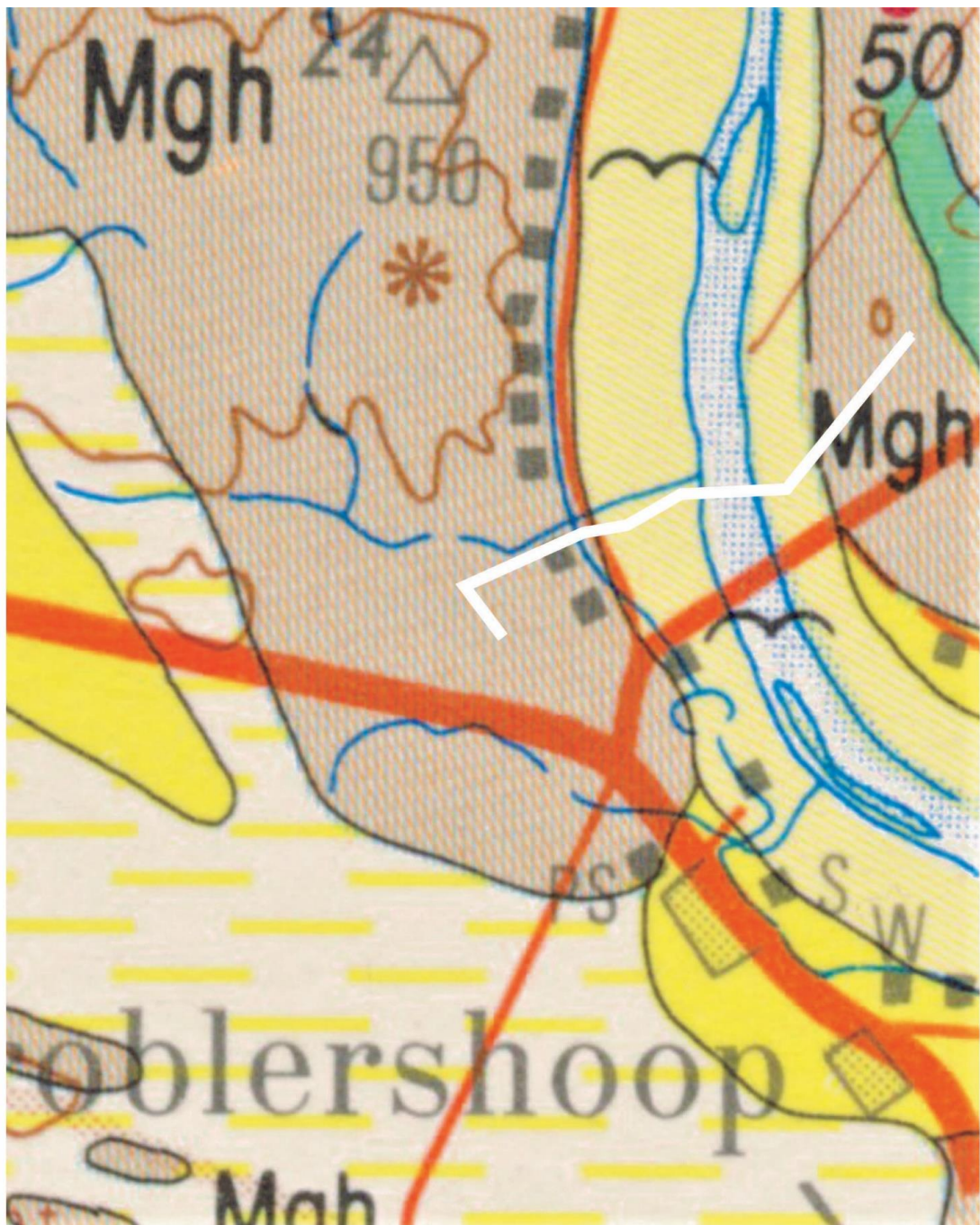


Figure 4. Portion of 1:250 000 scale geological map 2820 Upington. The study area (white line) is underlain by metavolcanic-metasedimentary bedrock of the Groblershoop Formation (*Mg*, Brulpan Group, Namaqua–Natal Province).

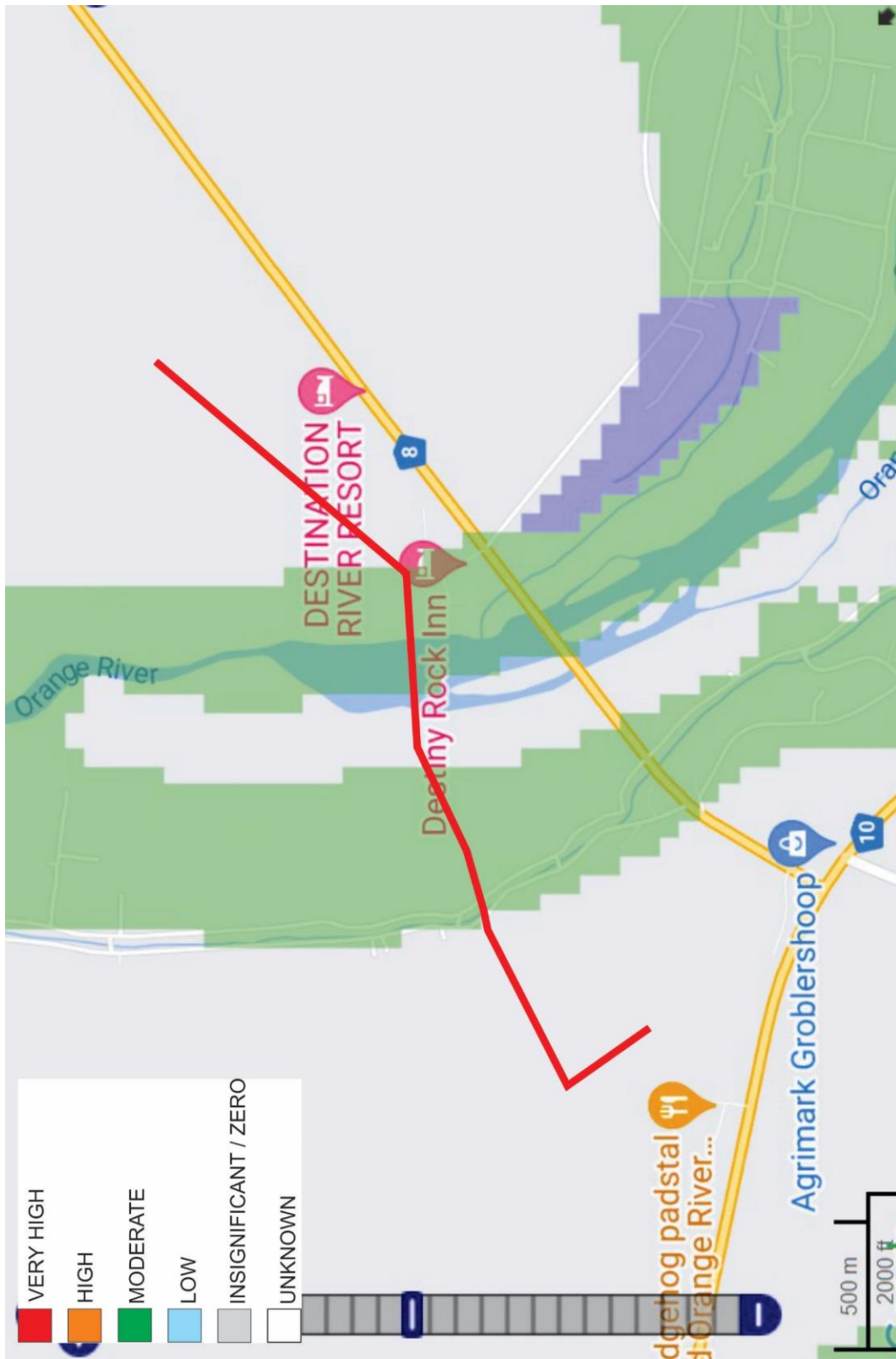


Figure 5. Study area marked on SAHRIS palaeosensitivity map (SAHRIS 2022).



Figure 6. Sections 1 and 2 traverse metavolcanic-metasedimentary rocks and bedrock – derived, gritty to gravelly top soils, including localized sheetwash and alluvial deposits. Section 3 traverses the river and its adjacent floodplain deposits including overbank sediments, the latter severely degraded by modern farming and other commercial activities.



Figure 7. Foliated schists (above left) and quartz veins (below left) covered by bedrock – derived, gritty to gravelly top soils (right).



Figure 9. Weathered flakes and assorted debitage made on banded ironstone (above left & right) and generally presented as isolated scatters within polymict surface gravel concentrations (bottom). Scale 1 = 10 cm.

APPENDIX 1: TRACK LOG

Index	Coordinates
1	S28 53 08.2 E21 58 14.5
2	S28 53 00.7 E21 58 22.7
3	S28 52 50.2 E21 58 15.6
4	S28 52 36.8 E21 58 35.3
5	S28 52 35.4 E21 58 39.4
6	S28 52 34.5 E21 58 43.8
7	S28 52 33.2 E21 58 47.7
8	S28 52 30.3 E21 58 55.7
9	S28 52 40.8 E21 59 18.6
10	S28 52 31.1 E21 59 20.0
11	S28 52 25.1 E21 59 20.1
12	S28 52 15.7 E21 59 29.5
13	S28 52 14.3 E21 59 36.7
14	S28 52 08.6 E21 59 36.7

