

Section AA

Scale 1 : 100

6.4mm Plasterboard ceiling fixed to 38x38mm aluminium OGE gutters with bonded enamel finish fixed to suppliers specifications with 200x27mm timber purlins. All wall and floor external finish fixed to wall as specified.

Asbestos fibre cement fascia boards.

229x152mm term-cote vermic plaster on brick wall.

Suspended timber floors to office section and concrete with grono finish to store room section.

Roof Pitch 45°

Existing 100mm continuous 'S' profile primed and painted non timber trusses/beams on saw timber rafters. Beams to be replaced with 200x27mm aluminium down pipes with bonded enamel finish fixed to wall as specified.

150x50mm primed and painted timber Column fixed to concrete.

Off-shutter finish to concrete verandah slab.

Roof Pitch 45°

Existing 100mm continuous 'S' profile primed and painted non timber trusses/beams on saw timber rafters. Beams to be replaced with 200x27mm aluminium down pipes with bonded enamel finish fixed to wall as specified.

150x50mm primed and painted timber Column fixed to concrete.

Off-shutter finish to concrete verandah slab.

Roof Pitch 5°

Existing 100mm continuous 'S' profile primed and painted non timber trusses/beams on saw timber rafters. Beams to be replaced with 200x27mm aluminium down pipes with bonded enamel finish fixed to wall as specified.

150x50mm primed and painted timber Column fixed to concrete.

Off-shutter finish to concrete verandah slab.

Roof Pitch 5°

Existing 100mm continuous 'S' profile primed and painted non timber trusses/beams on saw timber rafters. Beams to be replaced with 200x27mm aluminium down pipes with bonded enamel finish fixed to wall as specified.

150x50mm primed and painted timber Column fixed to concrete.

Off-shutter finish to concrete verandah slab.

Roof Pitch 5°

Existing 100mm continuous 'S' profile primed and painted non timber trusses/beams on saw timber rafters. Beams to be replaced with 200x27mm aluminium down pipes with bonded enamel finish fixed to wall as specified.

150x50mm primed and painted timber Column fixed to concrete.

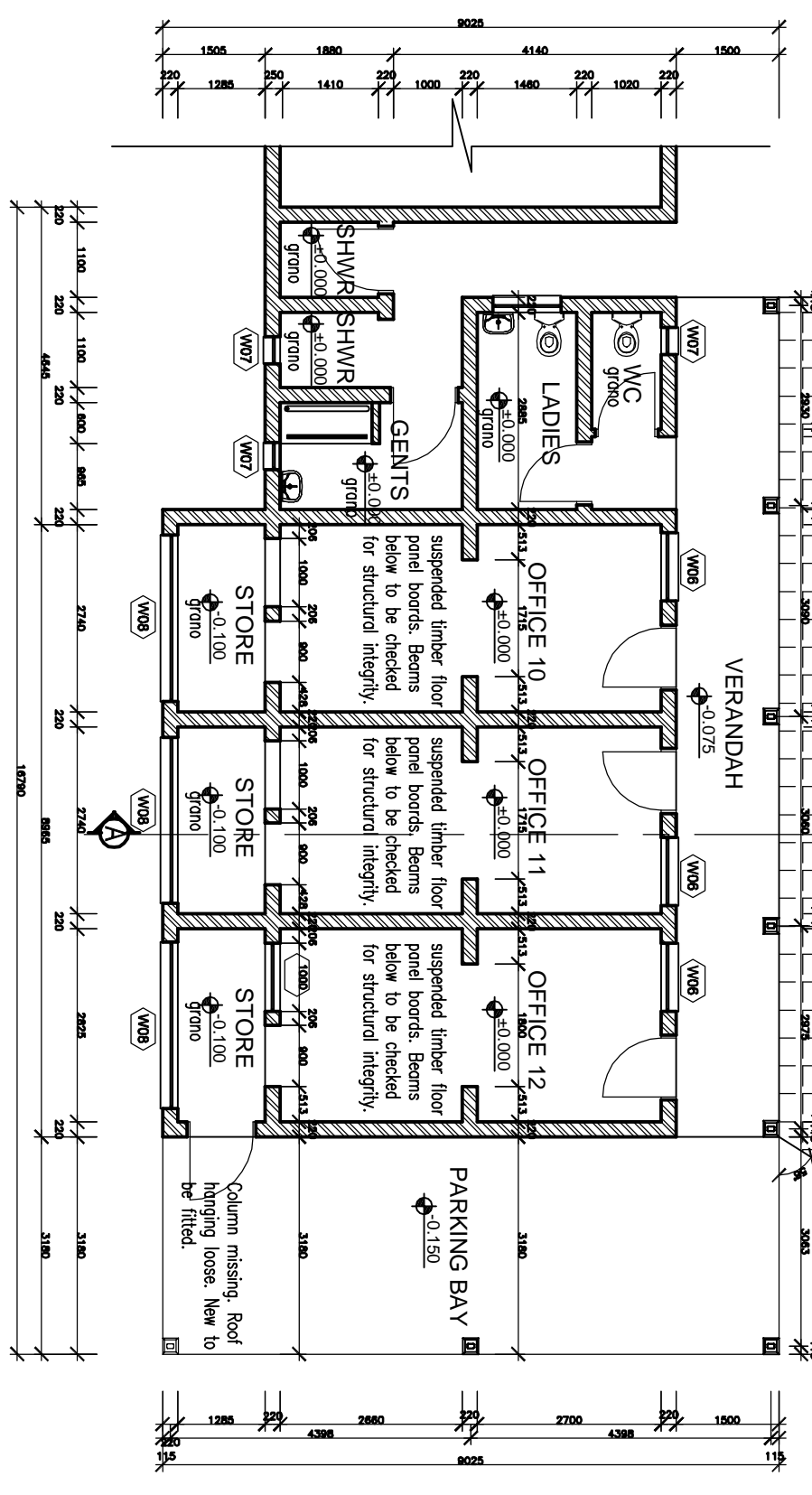
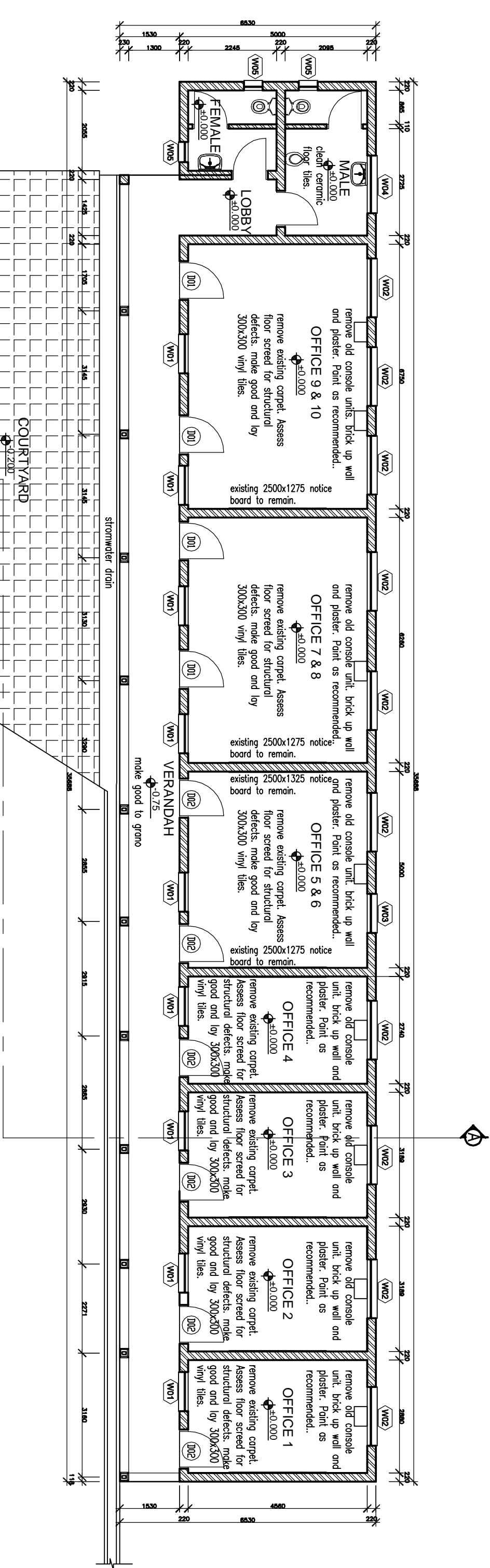
Off-shutter finish to concrete verandah slab.

Roof Pitch 5°

Existing 100mm continuous 'S' profile primed and painted non timber trusses/beams on saw timber rafters. Beams to be replaced with 200x27mm aluminium down pipes with bonded enamel finish fixed to wall as specified.

150x50mm primed and painted timber Column fixed to concrete.

Off-shutter finish to concrete verandah slab.



Floor Plan

Scale 1 : 100

- ### GENERAL NOTES TO ALL CONTRACTORS
- The drawings are not to be scaled. Any dimensions are to be taken from the drawings.
 - Contractors are to check all dimensions & levels before any work commencing. Any discrepancies are to be reported to the Architect/Engineer immediately.
 - The drawings are to be interpreted in conjunction with the accompanying Bill of Materials and Specifications. Any discrepancies are to be reported to the Architect/Engineer immediately.
 - All work to comply with relevant Building Regulations, Local Council requirements & all relevant codes & manufacturer's specifications.
 - Contractors are responsible for all site safety and protection & shall put all sites in a safe condition.

- ### DAMAGE NOTES
- All quality work to be carried out by licensed tradespeople.
 - At present work will include concrete floor slabs to be replaced in concrete slabs.
 - At present work will include concrete floor slabs to be replaced in concrete slabs.
 - At present work will include concrete floor slabs to be replaced in concrete slabs.
 - At present work will include concrete floor slabs to be replaced in concrete slabs.

- ### STRUCTURAL
- All structural work to be carried out by a structural engineer.
 - At present work will include concrete floor slabs to be replaced in concrete slabs.
 - At present work will include concrete floor slabs to be replaced in concrete slabs.
 - At present work will include concrete floor slabs to be replaced in concrete slabs.

- ### GLASS DIMENSIONS
- | Item | Quantity | Unit |
|------|----------|----------------|
| 1 | 2 | m ² |
| 2 | 0.5 | m ² |
| 3 | 1.5 | m ² |
| 4 | 2.1 | m ² |
| 5 | 2.1 | m ² |
| 6 | 2.1 | m ² |

CLIENT

DEPARTMENT OF PUBLIC WORKS
REPAIRS & RENOVATIONS TO WHIRBY LODGE
WHIRBY LODGE PIETERMARITZBURG

PROJECT INFORMATION

DATE	PROJECT ID	DRAWING ID	SCALE	REVISION
25/07/2013	WCS	EX-A1-001	1:100	-
DESIGNED BY:		DRAWN BY:	APPROVED BY:	
VJZM		VJZM	6730	
ARCHITECT'S SIGNATURE:				

CLIENT

DEPARTMENT OF PUBLIC WORKS
REPAIRS & RENOVATIONS TO WHIRBY LODGE
WHIRBY LODGE PIETERMARITZBURG

DESIGNER

mouth
UNLIMITED DESIGNS

Head Office:
340 York Avenue
Blenheim Office:
P.O. Box 2421, Blenheim 7125
Tel: +27 (0)11 781 7028
Fax: +27 (0)11 781 2553

Project Office:
37279 Street, Brooklyn, Pretoria
Tel: +27 (0)12 460 9490
Fax: +27 (0)12 460 4795

Rustenburg Office:
PO Box 7716, Rustenburg 0300
Tel: +27 (0)14 555 5445
Fax: 086 613 5335
email: info@mouth.co.za
web: 102.341.0300

Blenthorpe Office:
P.O. Box 5461, Durban, 4000
Tel: +27 (0)31 535 1022
Fax: 086 613 5335

Katlehong Office:
PO Box 2450, Katlehong, 3300
Tel: +27 (0)14 555 5445
Fax: 086 613 5335
http://www.mouth.co.za
CN No. 20030056272