



**Attention      Bernadet Pawandiwa**

Dear Ms Pawandiwa

**Application for Exemption from a Phase 1 Heritage Impact Assessment  
Illovo Sugar: Establishment of a 22 kV power line to Eston Sugar Mill.  
Umgungundlovu District Municipality, KwaZulu-Natal**

**Project description**

Illovo Sugar has applied to Eskom to install a new 22kV power line to its Eston Mill to strengthen the available power supply.

Section 38(1) of the NHRA may require such an assessment in case of:

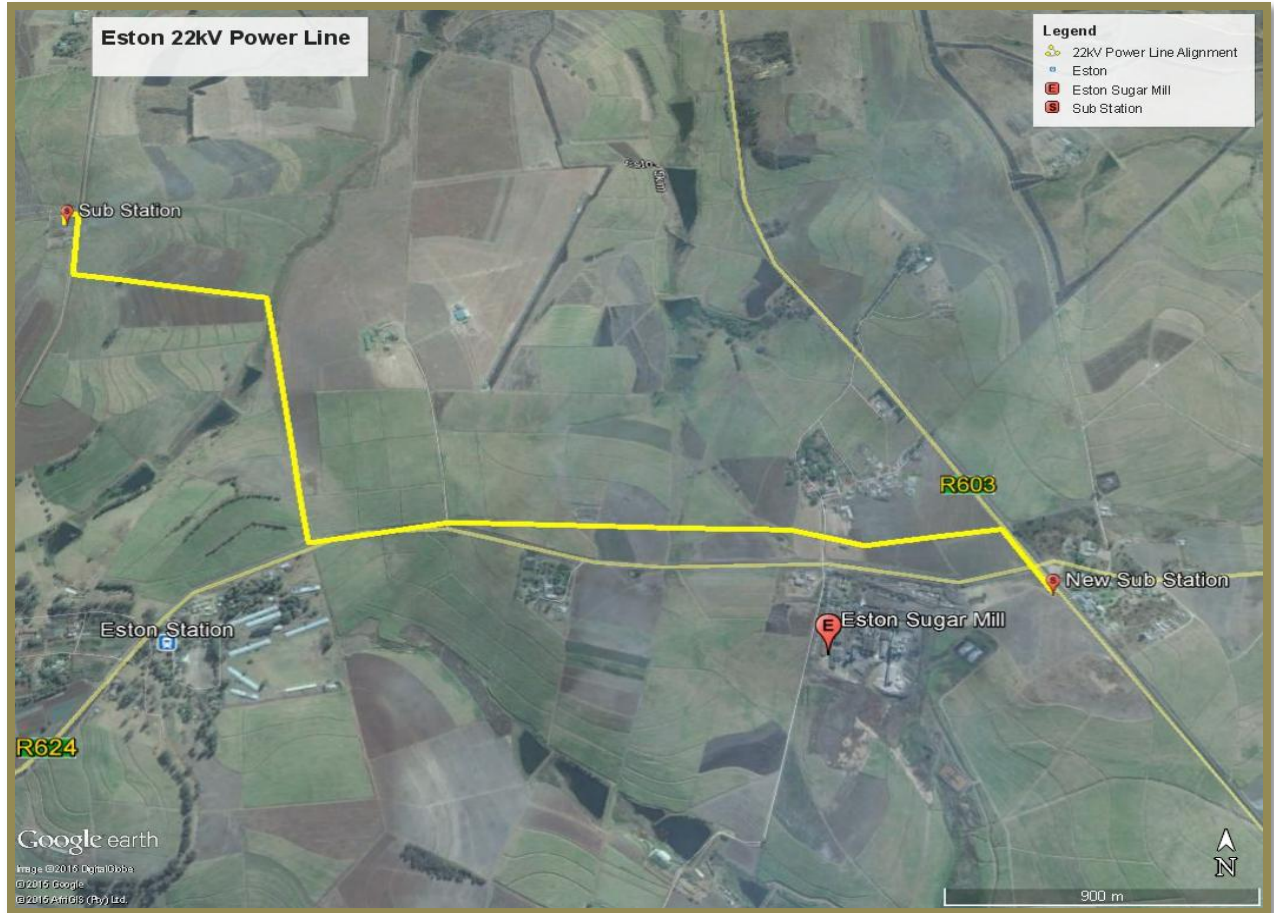
- the construction of a road, wall, power line, pipeline, canal or other similar form of linear development or barrier exceeding 300m in length.

**Site assessment and recommendations**

A site inspection was undertaken by eThembeni on 25 November 2015. The proposed line runs over a linear distance of approximately 4.5 kilometres. All poles and the proposed substation are within previously ploughed sugar cane fields, along the road reserve of existing district roads and cane-tracks, loading zones and, within the footprint of the mill yard itself. Extensive sugar cane production has been conducted in the vicinity of the mill since the early 1990's when the mill was first commissioned.

No evidence of Stone Age and Iron Age archaeological material was observed. The ploughed Ecca shale substrate is not conducive to the survival or spatial visibility of both Iron Age and Stone Age materials.

The project area is underlain primarily by Pietermaritzburg and Vryheid Formation shales of the Permian Ecca Group. The upper contact between these two formations is difficult to map as shales within these are almost indistinguishable. Whilst King (1948) reported *Glossopteris* flora within these deposits at isolated localities the presence of intrusive dolerite sills underlying the hill and dale local topography precludes the presence of any significant fossil remains (G. Botha 2002). Consequently no further palaeontological assessment is considered necessary.



**Figure 1. 22 kV powerline route alignment from Eston mill to R624/R603 intersection**

Accordingly, we request that Amafa grant an exemption from an HIA for this activity, allowing the project to proceed with no further heritage resource mitigation.

In this regard, please can you notify us timeously via the loaded SAHRIS case file as to the decision of Amafa.

Yours sincerely

*Len van Schaikwyk*

Len van Schaikwyk

Principal Investigator.

**References:**

**2002. Botha G.A and Botha R.C.N. Geological Description of Sheet 2930CB Pietermaritzburg. Council for Geoscience. Pietermaritzburg.**

**1948. King L.C. On The Ages of African Land-Surfaces. South African Geological Survey Bulletin.**

**G.A. Botha: (Ph.D) (Pri.Sci.Nat). *pers comm.* Director Eastern Region: Council for Geoscience.**