

Exemption of Phase 1 Archaeological and Palaeontological Impact Assessment of a 5ha site on portion 2 of Farm Poundisford 2803, Bloemfontein, Free State Province*.

Site: Portion 2 of farm Poundisford 2803

Map Ref.: 2926 AA Bloemfontein

General Site Coordinates:

A) 29°10'15.33"S 26° 5'35.99"E

B) 29°10'19.55"S 26° 5'34.99"E

C) 29°10'26.39"S 26° 5'43.66"E

D) 29°10'18.44"S 26° 5'45.20"

MvW Environmental Consultants requested an archaeological and palaeontological assessment for a proposed new 5 ha site to be used for organic compost manufacturing and storage on portion 2 of the farm Poundisford 2803 outside Bloemfontein (**Fig.1-2**). The area is made up of flat, open grassland. (**Fig. 3**) and is underlain by outcrop area of Beaufort Group (Adelaide Subgroup) strata, assigned to the *Dicynodon* Assemblage Zone (vertebrate biozone) (**Fig. 4**). The bedrock sediments are capped by a thick mantle Quaternary to Recent residual deposits supporting grassland that was previously used for pasture. (**Fig. 5**). Bedrock exposures are absent from the site. The proposed development will be restricted to aboveground activities, while potential impact on the substratum will be negligible.

After a brief walk-through, it was established that potential **archaeological** impact resulting from the proposed development will be non-existent. The soil overburden (residual deposits) is not palaeontologically vulnerable and the likelihood of **palaeontological** impact on underlying bedrock sediments below the superficial overburden is considered to be extremely low.

It is recommended that the proposed development is exempted from a Phase 1 archaeological and palaeontological impact assessment.

* Report prepared for MvW Environmental Consultants, Stockcrescent 9, Fichardtpark, Bloemfontein 9301 by L. Rossouw, National Museum Bloemfontein, c/o Aliwal and Charles Street, Bloemfontein 9300.

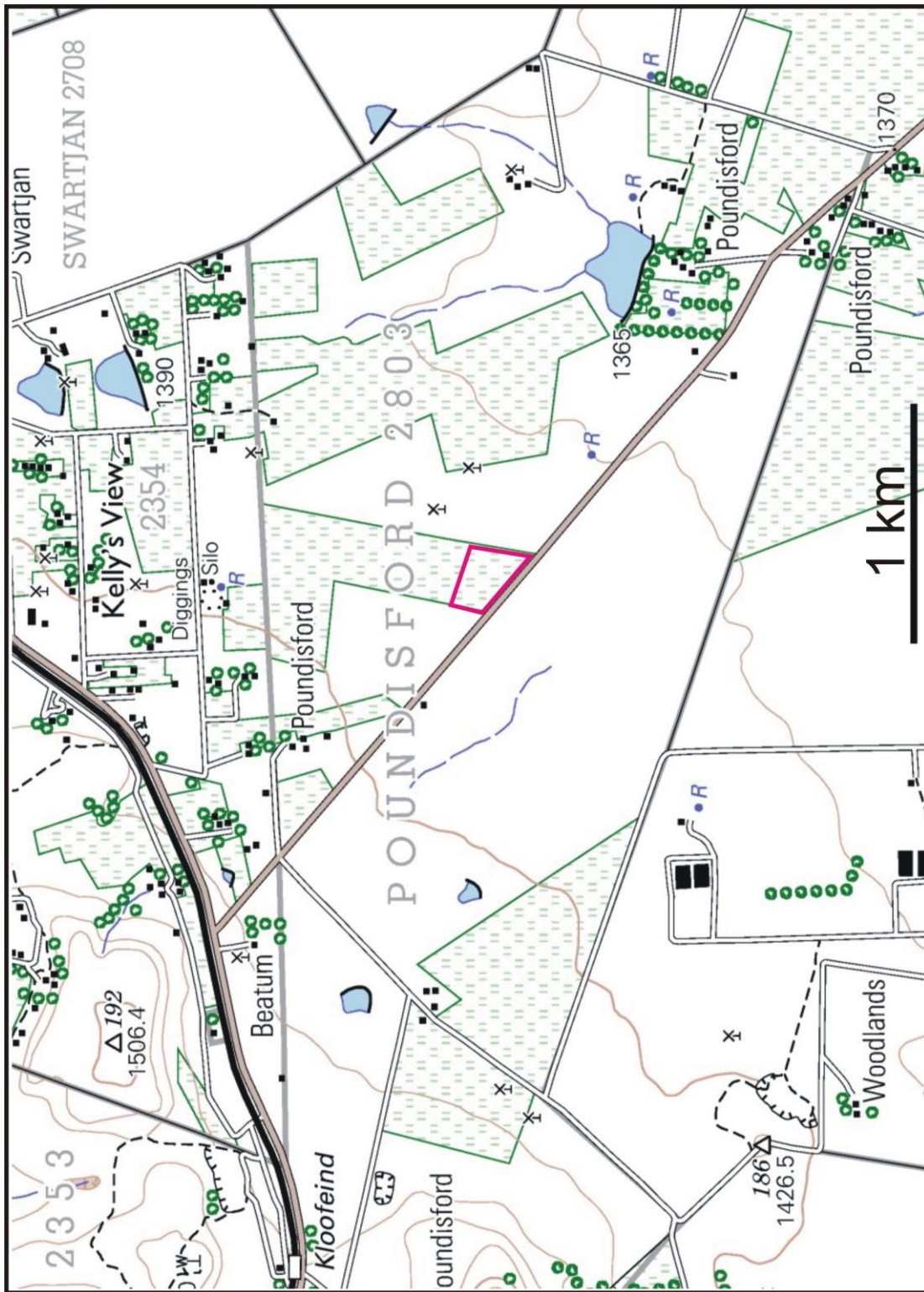
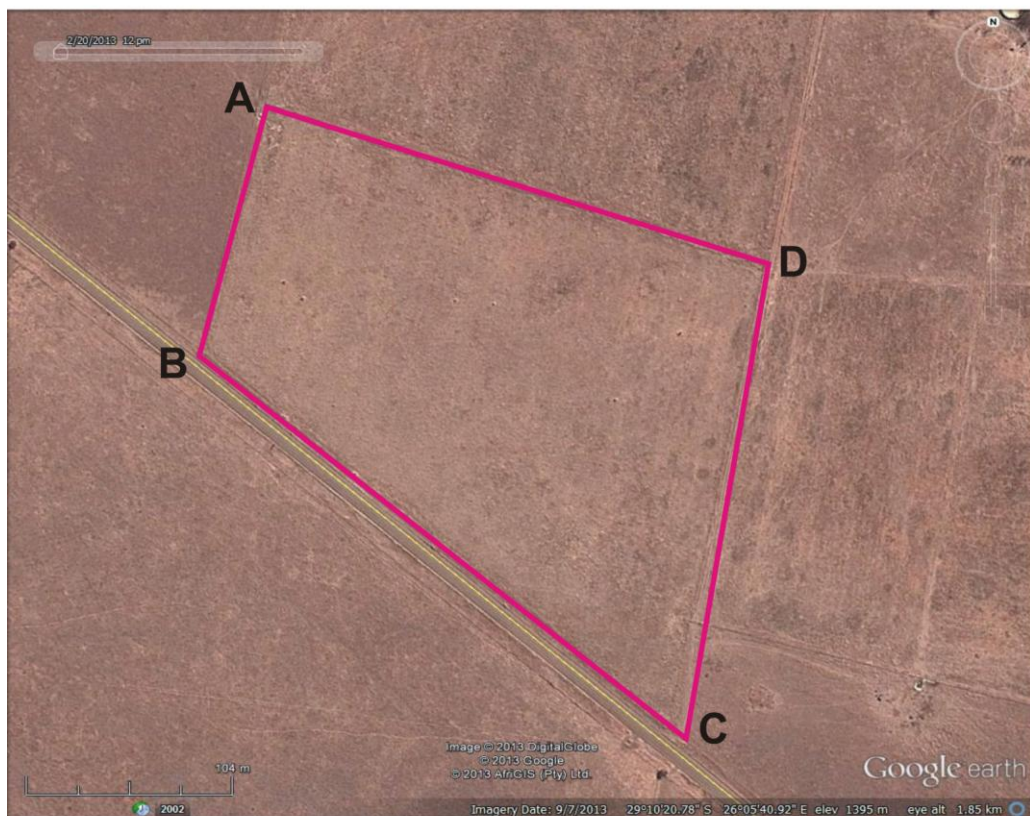


Figure 1. Locality map of the proposed site (1:50 000 scale topographic map 2926AA Bloemfontein).



Aerial views of the proposed site.

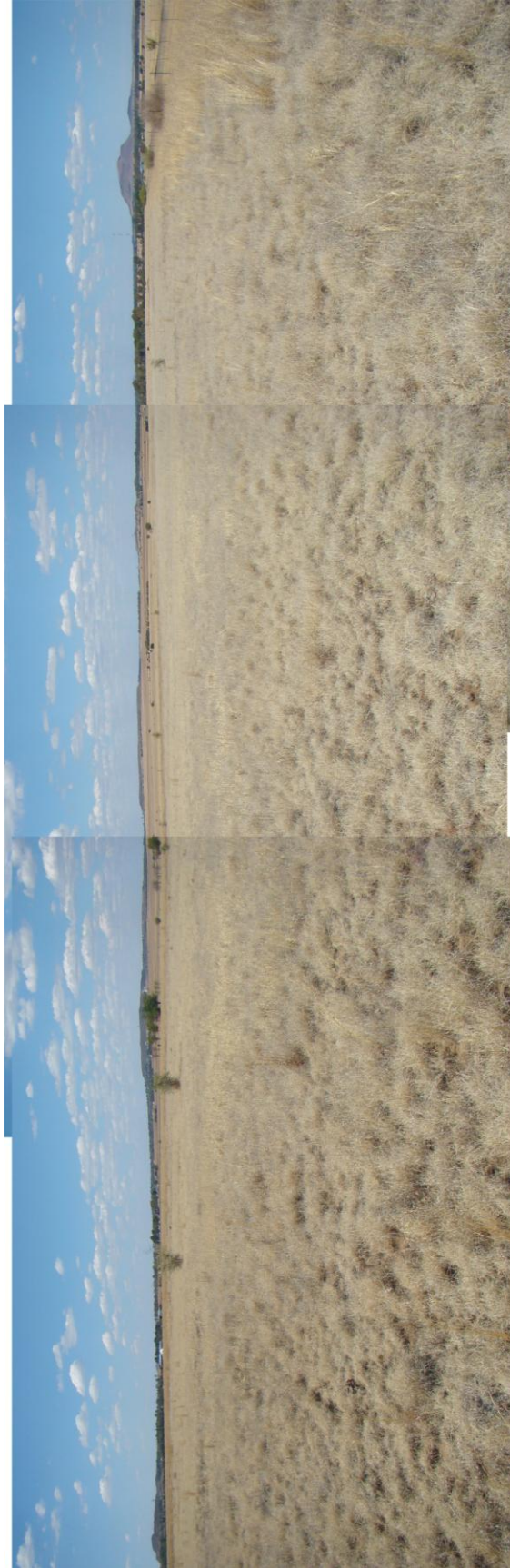


Figure 3. The affected area, looking south. The area is made up of flat, open grassland.

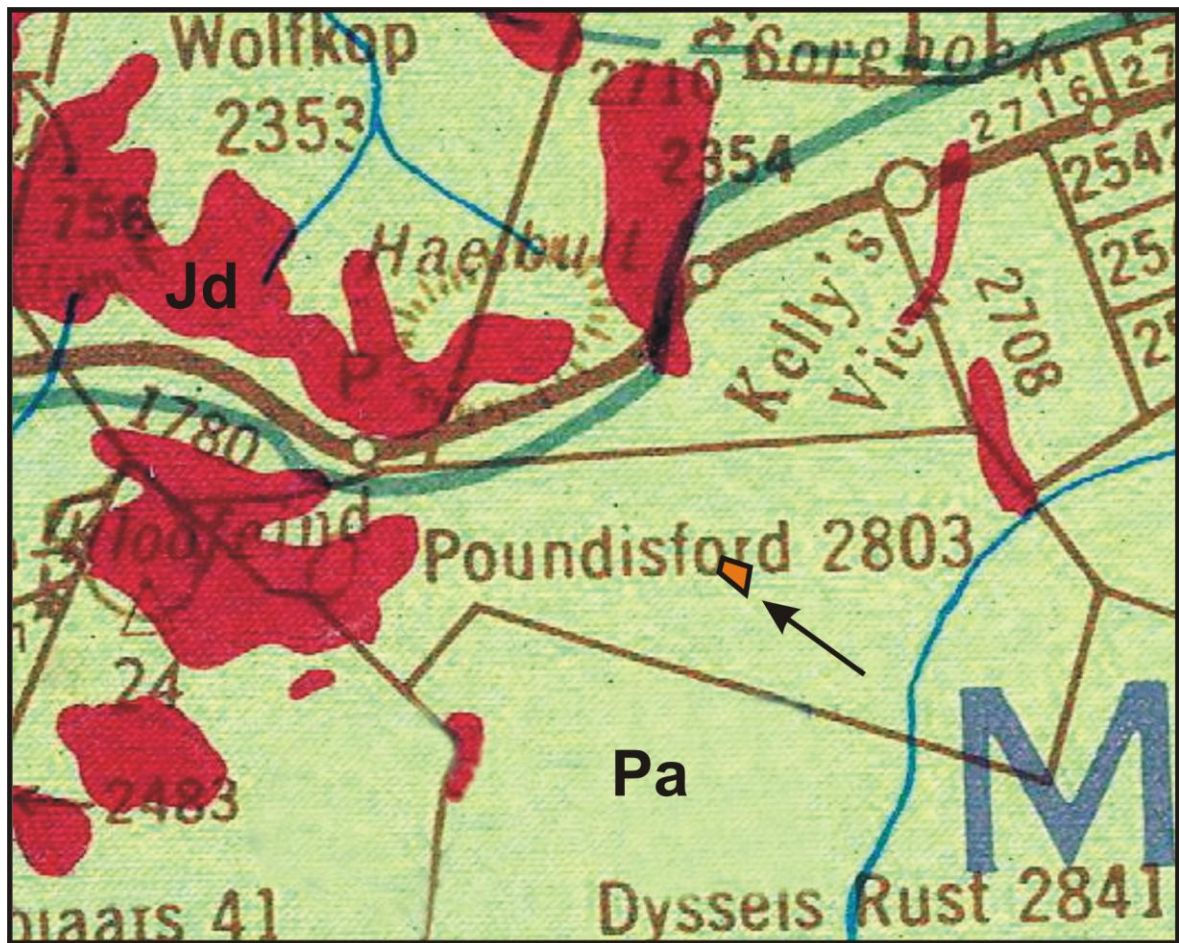


Figure 4. The affected area is underlain at depth by an outcrop area of Adelaide Subgroup strata (*Pa*), which is biostratigraphically assigned to the *Dicynodon* Assemblage Zone (vertebrate biozone).



Figure 5. Quaternary to Recent residual deposits supporting grassland, previously used for pasture.