

# **AN ARCHAEOLOGICAL IMPACT ASSESSMENT OF THE SITE FOR THE PROPOSED RESERVOIR ON FARM 1341 ROGGELAND, PAARL**

**Magisterial district: Paarl**

Assessment conducted in terms of  
Section 38 (5) & (8) of the National Heritage Resources Act (Act 25 of 1999)

Prepared for

**Aurecon**

August 2009



Report by

**Dave Halkett**

**Archaeology Contracts Office**

Department of Archaeology  
University of Cape Town  
Private Bag  
Rondebosch  
7701

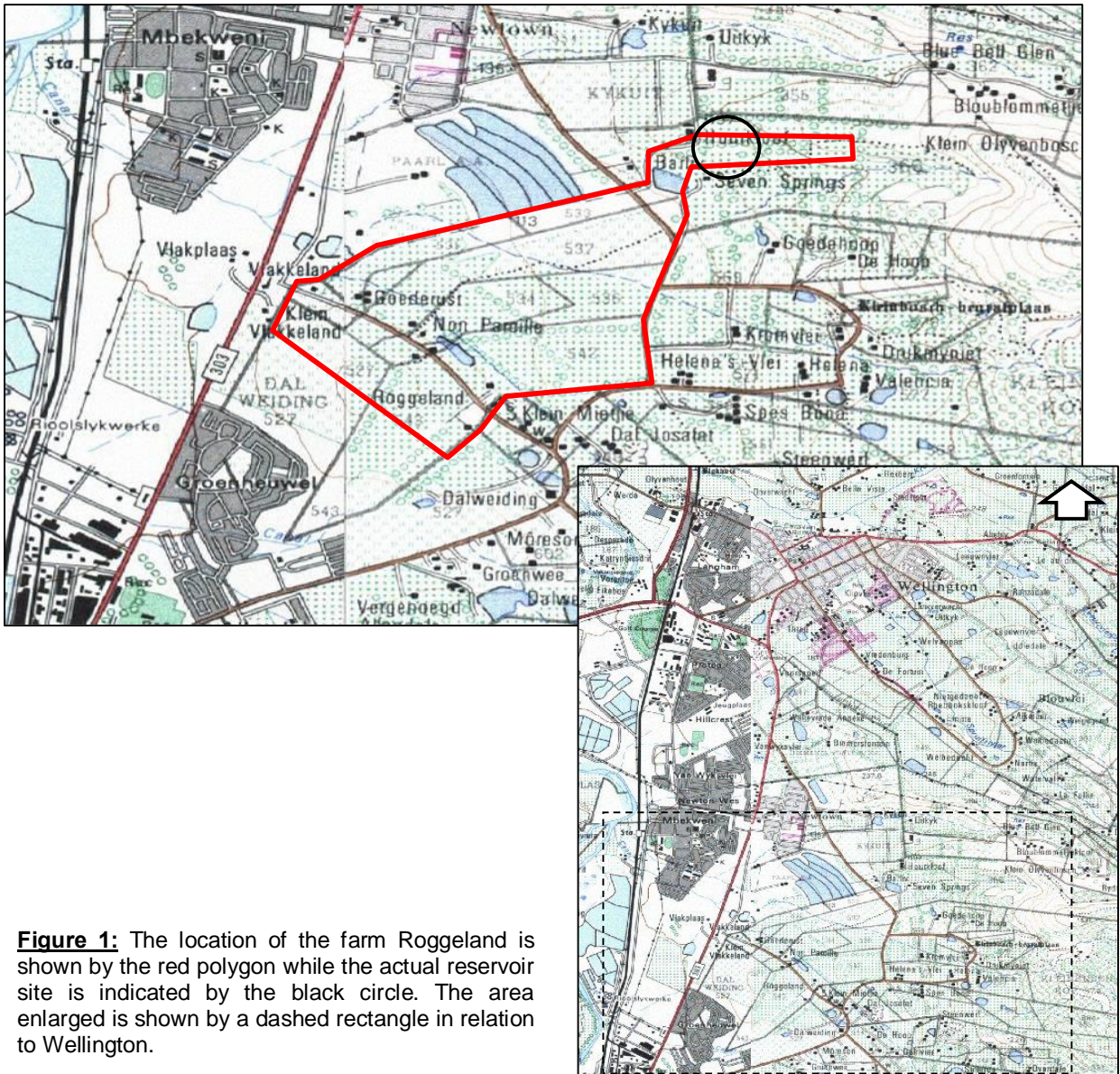
Phone (021) 650 2357  
Fax (021) 650 2352  
Email: david.halkett@uct.ac.za

1. INTRODUCTION .....	3
2. PROJECT DETAILS .....	4
3. METHODS.....	5
4. OBSERVATIONS.....	5
5. CONCLUSIONS AND RECOMMENDATIONS.....	7

# 1. INTRODUCTION

The Archaeology Contracts Office was requested to carry out an archaeological assessment of Phase 2 of the proposed expansion of the water supply infrastructure for Wellington and Paarl, comprising construction of a reservoir and pipeline on the historic farm Roggeland, near Paarl. Roggeland, formerly a National Monument, would now be considered a Grade 2 Provincial Heritage site. An NID was submitted to HWC by Graham Jacobs of ARCON, and he recommended that an archaeological impact assessment should be commissioned.

The location of Roggeland (Farm 1341) is shown in Figure 1, while detailed project components are shown in Figure 2.



**Figure 1:** The location of the farm Roggeland is shown by the red polygon while the actual reservoir site is indicated by the black circle. The area enlarged is shown by a dashed rectangle in relation to Wellington.

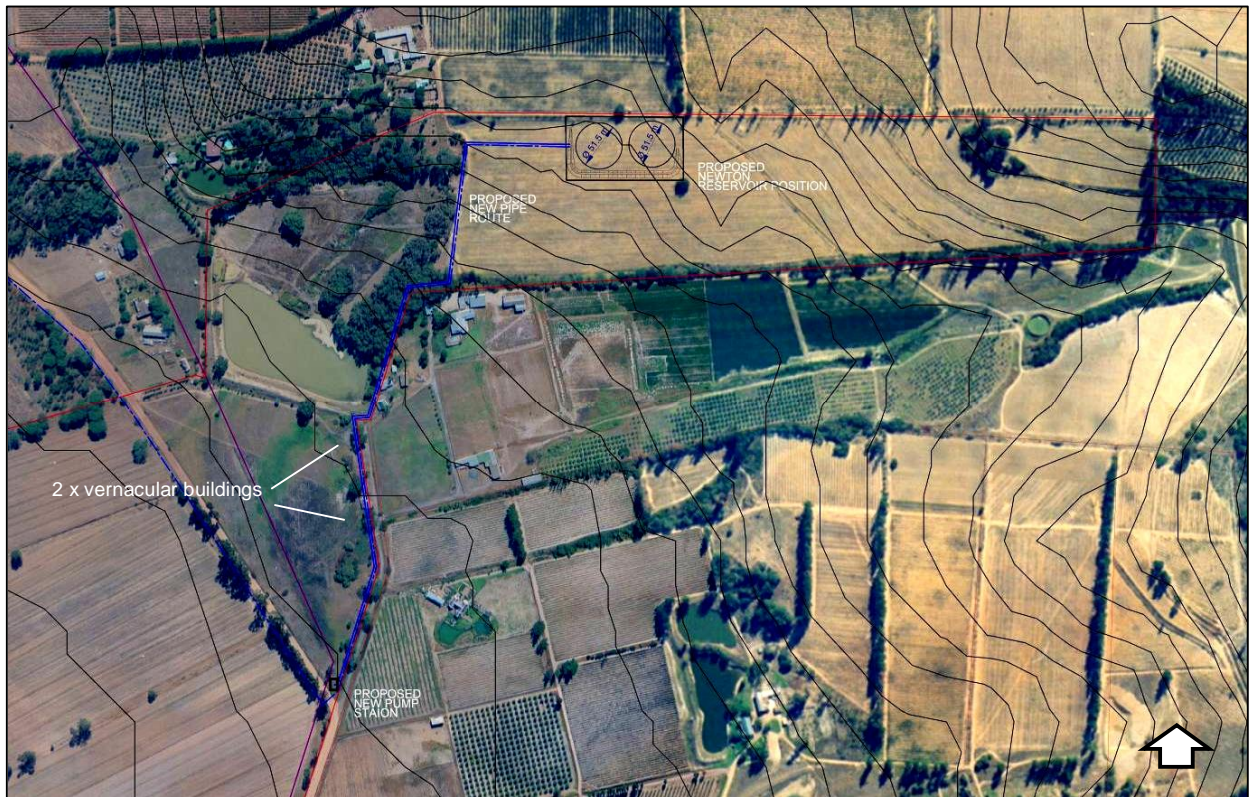
## 2. PROJECT DETAILS

The proposed expansion of the water supply infrastructure for Wellington and Paarl, falling within the Drakenstein Municipal area. The project includes the construction of 2x12 megalitre reservoirs, in the Daljosaphat area, a rising main, 40sq m pump station, and pipelines connecting these key elements extending to the Van Blerck reservoir on the southern outskirts of Wellington. The project is divided into two phases:

PHASE 1: Construction of a 400mm diameter pipeline of approximately 4 200m in total length, extending along the R301 from the Van Blerck Reservoir to approx 600m south of Buitekant St, Mbekweni; and

PHASE 2: The construction of a similar pipeline from the corner of the R301 and Buitekant Street running in an easterly direction along the road reserve. The proposed pipeline will lead into Bo Dal Road, where it will divert in a southerly direction and extend along the road reserve. The pipeline will extend to the proposed pump station located at the corner of Bo Dal Road and the access gravel road leading into Roggeland Farm. Two further pipelines will extend from the pump station in a northerly direction into Roggeland Farm, where it is intended to construct the reservoirs. The dimensions of the proposed reservoirs will be 120 m x 80 m, covering a total area of 9 600 m<sup>2</sup>.

Phase 1 is urgent and needs to get underway as soon as possible to forestall potential water shortages.



**Figure 2:** Project components superimposed on an aerial photograph (graphic supplied by Aurecon)

### 3. METHODS

On the 21<sup>st</sup> August 2009, Mr Klaus Bäumler from Aurecon met Mr D Halkett and Dr L Webley on site and showed us the proposed reservoir , pipeline and pump station locations. We then undertook a foot survey of the areas affected by the proposed works. The landscape was photographed and track paths were created on a handheld GPS receiver (Figure 3). The locations of archaeological material were also recorded with the GPS (Map Datum WGS 84).

### 4. OBSERVATIONS

The proposed reservoir site is in formerly ploughed agricultural land. Occasional fragments of natural rock were noted on the surface and the presence of a large tree in the middle of the field suggested that bedrock was close to surface at that point. Some artefactual material was noted at the proposed reservoir and upper part of the pipeline route but these occur as isolated finds and are described in Table 1. A series of photographs follows showing some of the artefacts and the landscape. No material was located at the proposed pump station site or on the lower part of the pipeline route which will essentially be beneath an existing farm road. Visibility of the surface was considered to be good. Two vernacular cottages and several oak trees are found to the west of the lower pipeline route. As the pipeline will be inserted below the road, these features will not be impacted.

**Table 1:**

#	Lat/Lon°	Type	Description
RGL1	S33.68032 E19.01886	isolated artefact	Early Stone Age (ESA) flake
RGL2	S33.68034 E19.01886	isolated artefact	ESA crude handaxe
RGL3	S33.67992 E19.02175	isolated artefact	Late Stone Age (LSA) grindstone



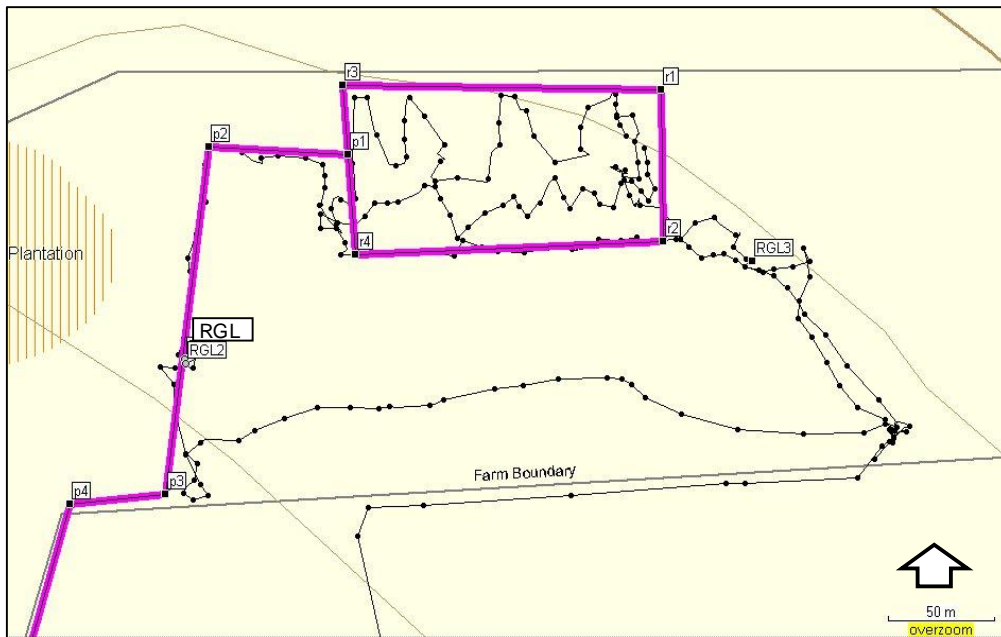
(l) RGL 2 - crude handaxe made on TMS cobble (m) RGL 1 - large quartzite flake (r) RGL 3 - grindstone



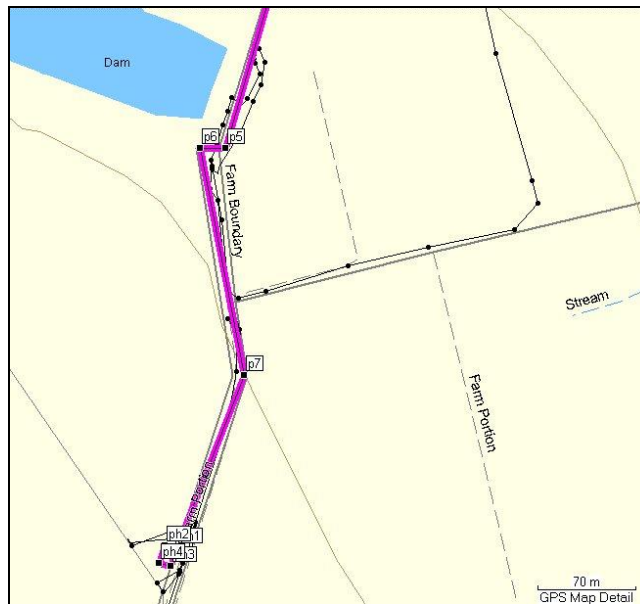
(l) Looking to the east across the reservoir site (r) looking south down the western section of the site where the pipeline will be buried.



Two vernacular cottages west of the farm road on the lower part of the pipeline route. These will not be impacted by the proposed activities.



**Figure 3:** Walkpaths (black) at the reservoir site and upper pipeline route (both purple). Locations of isolated archaeological material is also shown.



**Figure 4:** Walk and drivepaths, along the lower part of the pipeline route.

## 5. CONCLUSIONS AND RECOMMENDATIONS

Having inspected the proposed activities, we find that there will be no significant impact on archaeological resources due to construction of the three components of the project that have been inspected by us. A remote possibility exists that historic material may be present in the vicinity of the 2 vernacular houses adjacent to the lower part of the pipeline route. This may take the form of items such as ceramics, glass, and other household refuse. Historic material could also include graves. If such material is uncovered it must immediately be reported to Heritage Western Cape (Mr N. Wiltshire 021-483 9687 e-mail: nwiltshire@pgwc.gov.za).

Since Roggeland is a Grade 2 Provincial Heritage Site, in terms of Section 38 (5) of the NHRA, the report must be forwarded to SAHRA - Western Cape office for comment (Ms Sonia Warnich e-mail: swarnich@wc.sahra.org.za). SAHRA's comments should be forwarded to Mr Wiltshire at HWC.