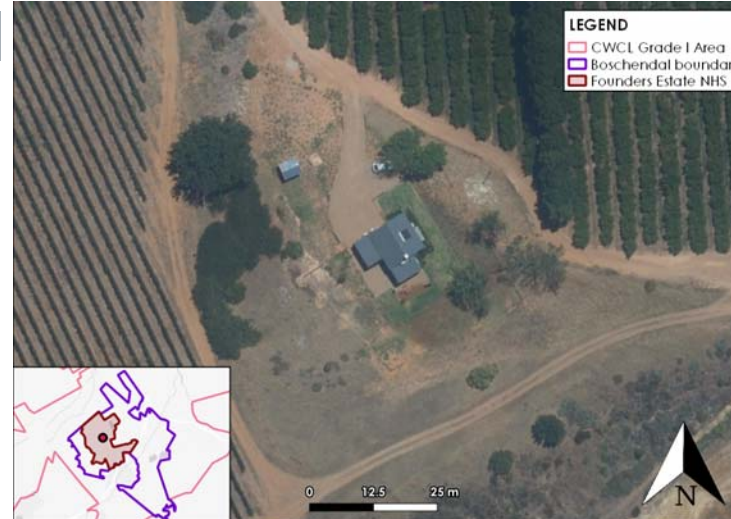


SITE NAME: NIEUWEDORP **Map Ref: FB14**
Building Number: FE44

ADDRESS OF THE SITE		PROTECTION AND GRADING	
FARM NAME	Nieuwedorp	Curr. NHRA Protection	Located within a NHS
FARM NUMBER	1685/9	>60YRS?	No
CURRENT USE	Guest accommodation	PROPOSED GRADING	Ungraded/NCW
ORIGINAL USE	Farm cottage		



SIGNIFICANCE				ARCHITECTURAL STYLE	
Associational	Low	Age	Low	Mid C20th farm cottage	
Architectural	Low	Rarity	Low		
Archaeology	Low	Scientific	Low		
Representivity	Low	Symbolic	Low		
Intangible	Low				

ARCHITECT/BUILDER **SITE PHOTO**

MAP (RSA, 2019)

GROUPING WITH OTHER SITES		LATITUDE/LONGITUDE	
Farm cottage		18°57'03.46" E	33°52'43.69" S

SITE DESCRIPTION

Small cottage under double pitched IBR with lean-to additions

SITE HISTORY

Built between 1938 and 1949. Renovated as guest accommodation in last 5 years.

CONTEXTUAL DESIGN

Sited on elevated terrace with views to east and Nieuwedorp. Three mature trees.

HERITAGE VULNERABILITY

None

EVIDENCE OF DEMOLITION

STATEMENT OF SIGNIFICANCE

Aesthetic value in terms of landscape context. No intrinsic value.

INVASIVE ELEMENTS

None

REFERENCES

Aikman H. & Berman, A. 2005. Boschendal Heritage Assessment: Built Environment Survey and Evaluation. Unpublished report for Baumann and Winter Heritage Consultants. Aikman and Associates: Cape Town.

Baumann, N., Winter, S., Dewar, D. And Louw, P. 2017. Heritage Impact Assessment: Boschendal Village Node, Portion 7 of Farm 1674 and Portion 10 of Farm 1674, Boschendal, Stellenbosch Municipality, August 2017. Unpublished report prepared for Boschendal Proprietary Ltd. Cape Town: Baumann and Winter.

Wolff Architects. 2019. Boschendal Estate: Landscape Heritage Report. Unpublished report prepared for Boschendal Proprietary Ltd. Cape Town: Wolff Architects.

Wolff Architects. 2018. Boschendal Estate, Stellenbosch, South Africa: Conceptual Framework Report, 4 December. Unpublished report prepared for Boschendal Proprietary Ltd. Cape Town: Wolff Architects.

Winter, S. 2013-2014. Review of Historical Built Environment. Unpublished report for Boschendal Ltd. Baumann and Winter Heritage Consultants: Cape Town.