

Figure 1 Plan of main site, Klasies River. Sampling for microfauna Cave 1, in the square adjacent to E50 (E49); Sampling for OSL dating in Squares E50, H51 and J51; Sampling for cryptotephra in Squares J51, J51 and just below J51.

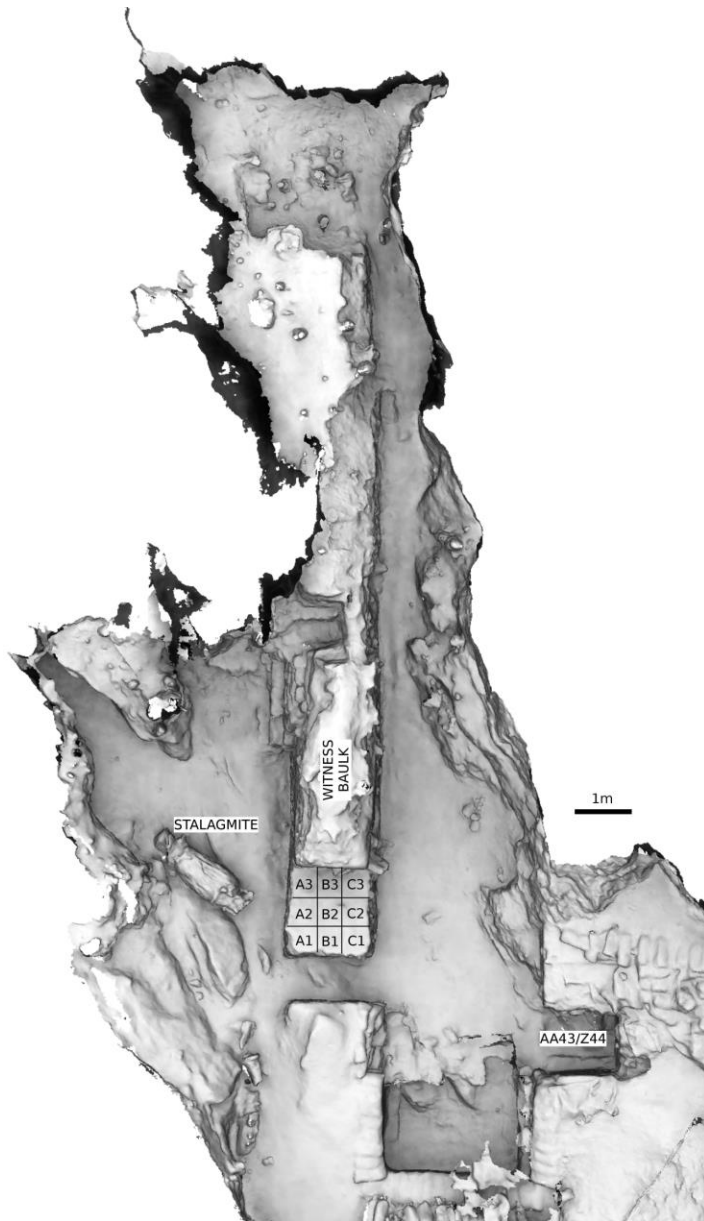


Figure 2 Klasies River main site Cave 1. 3D model of the site with the Witness Baulk in the centre of the cave. The excavation grid with squares A1 - C3 shows the area where the material discussed in this report originate from (image courtesy of the Zamani project) From Brenner & Wurz 2019

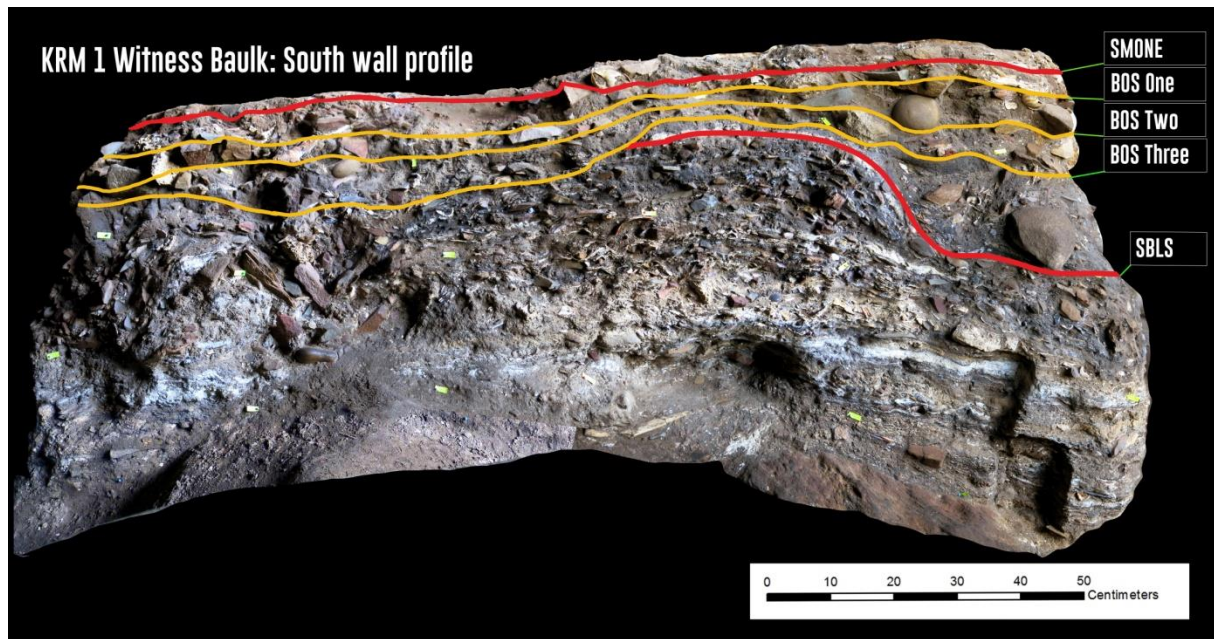


Figure 3 Stratigraphy of the 2015-2018 excavation of the Witness Baulk at KRM Cave 1 (adapted from Brenner and Wurz 2019). A part of BOSTHREE and SBLS excavated in 2018