

**A DESKTOP LETTER OF EXEMPTION FOR A  
COMMUNITY HALL IN FRANCE, MSUNDUZI  
MUNICIPALITY, KWAZULU-NATAL**

**FOR SIVERST (PTY) LTD**

**DATE: 3 FEBRUARY 2021**

**By Gavin Anderson**

**Umlando: Archaeological Surveys and Heritage  
Management**

**PO Box 10153, Meerensee, 3901**

**Phone: 035-7531785 Cell: 0836585362**

**umlando@gmail.com**



## Abbreviations

HP	Historical Period
IIA	Indeterminate Iron Age
LIA	Late Iron Age
EIA	Early Iron Age
ISA	Indeterminate Stone Age
ESA	Early Stone Age
MSA	Middle Stone Age
LSA	Late Stone Age
HIA	Heritage Impact Assessment
PIA	Palaeontological Impact Assessment

## INTRODUCTION

The information which has been provided to SiVEST SA (Pty) Ltd is that the Msunduzi Municipality wishes to establish a Community Hall and associated infrastructure on a proposed portion of ERF 6069 located in the Township of France, Msunduzi Municipality, KwaZulu-Natal. The property is located below the adjacent schools sports fields and is approximately 6km south of the South Gate Shopping Centre located in Bisley, Pietermaritzburg.

The hall will be fully serviced and so will have electrical, water, and sewage services all of which will be connected to the existing municipal supplies located at the boundary of the site. Parking areas will be provided within the proposed development footprint and general waste from the facility will be disposed of via the municipal waste stream at the New England Road municipal landfill site. Access to site will be off an existing unnamed municipal road. The site (A proposed portion of ERF 6069 France) is approximately 6 500 square meters (0.65 ha) in extent, and the development footprint will cover this entire area. The land is currently zoned as Educational Use" based on the information which has been received from the HN Consulting Engineers (Pty) Ltd. At present the site is open undeveloped land which shows evidence of historical disturbance, possibly as a result of the establishment of the adjacent school sports fields or other infrastructure associated with surrounding land uses. The majority of the site is bounded by a mix of formal and informal community housing, including a school to the east.

Umlando was requested to assist in the HIA and suggested that it be exempt from further HIA. Figures 1 – 4 show the location of the site.

FIG. 1: GENERAL LOCATION OF THE STUDY AREA



FIG. 2: AERIAL OVERVIEW OF THE STUDY AREA



FIG. 3: TOPOGRAPHICAL OVERVIEW OF THE EASTERN STUDY AREA (1996)

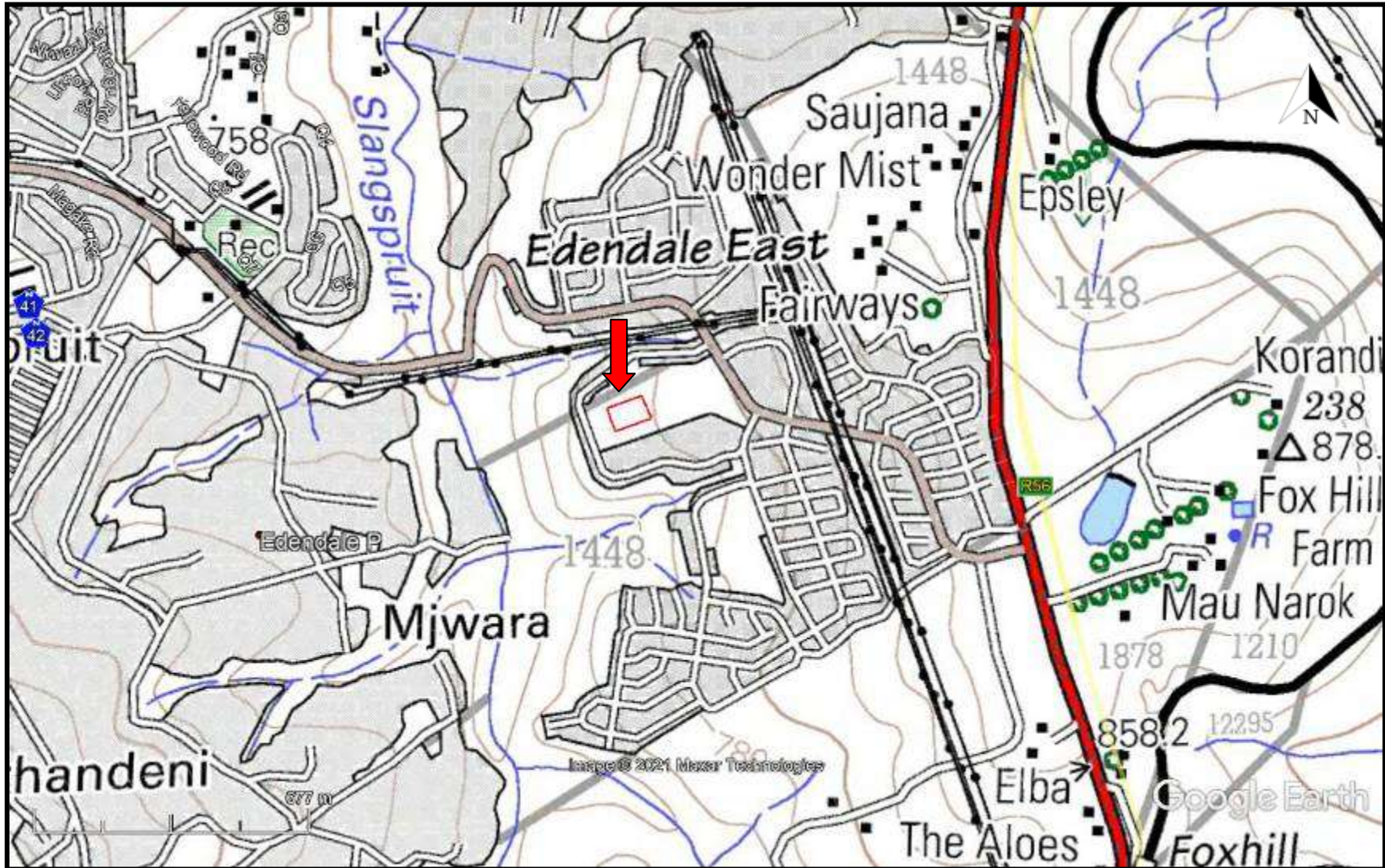


FIG. 4; SCENIC VIEWS OF THE SITE



The desktop study consisted of analysing various maps for evidence of prior habitation in the study area, as well as for previous archaeological surveys. The archaeological database indicates that there are archaeological sites in the general area (fig. 5). These sites include all types of Stone Age and Iron Age sites. No sites occur in the study area. The high density of development in the area has resulted in any archaeological sites being destroyed.

No national monuments, battlefields, or historical cemeteries are known to occur in the study area.

The 1937 (fig. 6) and 1944 (fig. 7) maps indicate that the area was previously grassland. There is a possible structure on the 1937 aerial photograph, but it is not shown on the 1968 map.

The 2006 Google Earth imagery indicates that there are no buildings in the study area (fig. 8).

The study area is of no palaeontological sensitivity (fig. 9).

The proposed community hall should be exempt from further HIA studies.



FIG. 5: LOCATION OF KNOWN HERITAGE SITES NEAR THE STUDY AREA

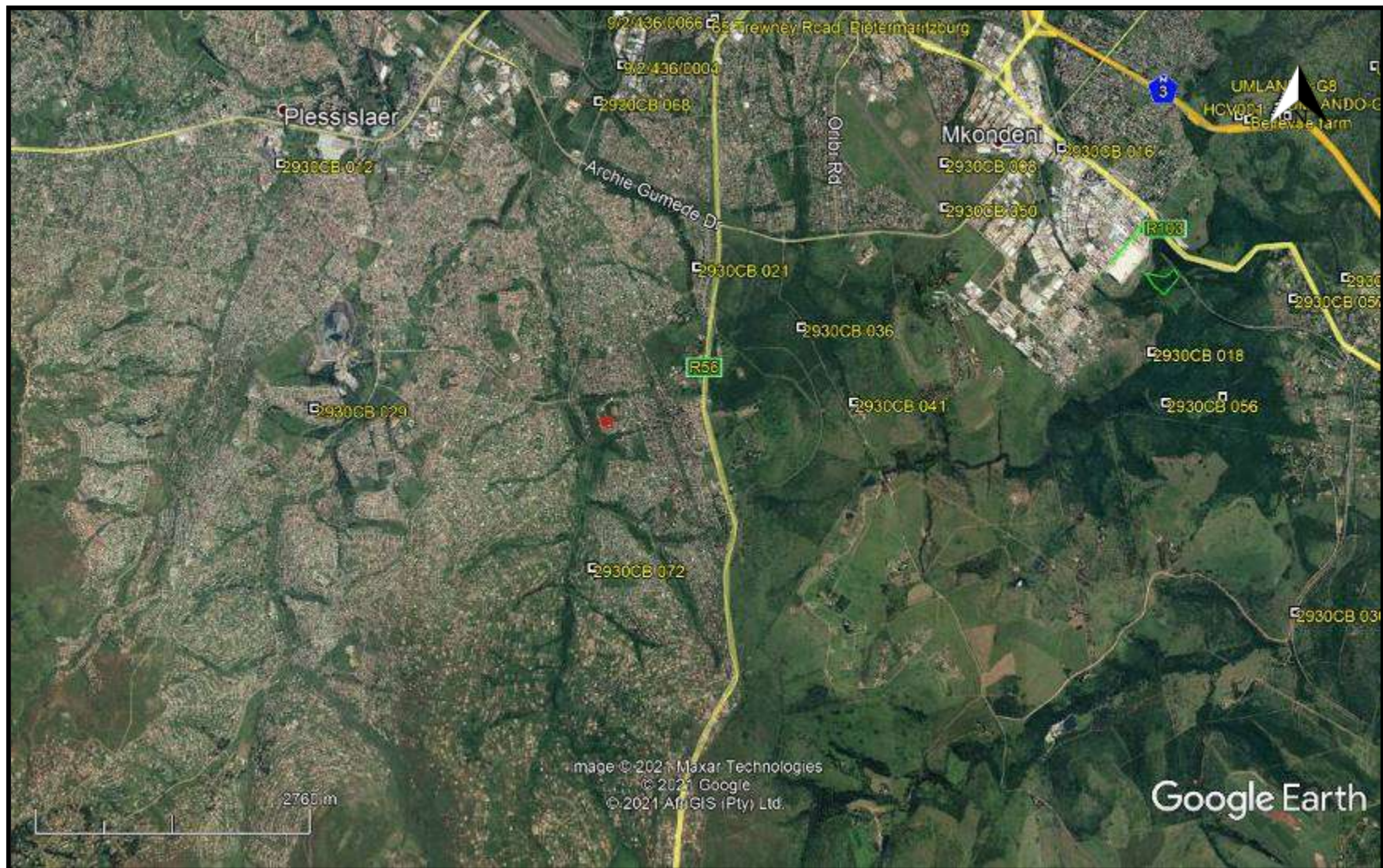


FIG. 6: STUDY AREA IN 1937



FIG. 7: STUDY AREA IN 1968

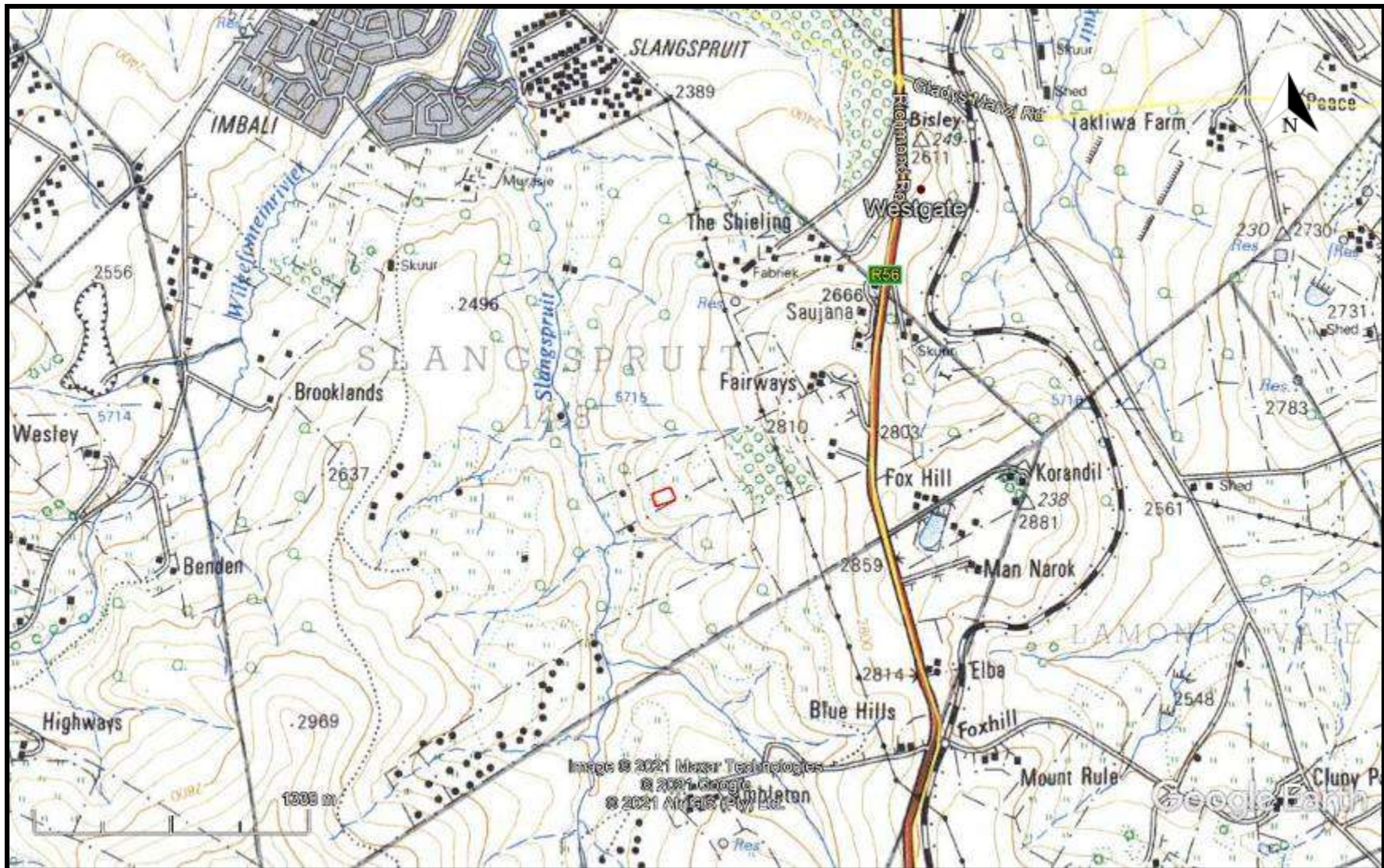


FIG. 8: 2006 GOOGLE IMAGERY OF THE STUDY AREA



**FIG. 9: PALAEOLOGICAL SENSITIVITY**

COLOUR	SENSITIVITY	REQUIRED ACTION
RED	VERY HIGH	field assessment and protocol for finds is required
ORANGE/YELLOW	HIGH	desktop study is required and based on the outcome of the desktop study, a field assessment is likely
GREEN	MODERATE	desktop study is required
BLUE	LOW	no palaeontological studies are required however a protocol for finds is required
GREY	INSIGNIFICANT/ZERO	no palaeontological studies are required
WHITE/CLEAR	UNKNOWN	these areas will require a minimum of a desktop study. As more information comes to light, SAHRA will continue to populate the map.

### **EXPERIENCE OF THE HERITAGE CONSULTANT**

Gavin Anderson has a M. Phil (in archaeology and social psychology) degree from the University of Cape Town. Gavin has been working as a professional archaeologist and heritage impact assessor since 1995. He joined the Association of Professional Archaeologists of Southern Africa in 1998 when it was formed. Gavin is rated as a Principle Investigator with expertise status in Rock Art, Stone Age and Iron Age studies. In addition to this, he was worked on both West and East Coast shell middens, Anglo-Boer War sites, and Historical Period sites.

### **DECLARATION OF INDEPENDENCE**

I, Gavin Anderson, declare that I am an independent specialist consultant and have no financial, personal or other interest in the proposed development, nor the developers or any of their subsidiaries, apart from fair remuneration for work performed in the delivery of heritage assessment services. There are no circumstances that compromise the objectivity of my performing such work.



Gavin Anderson  
Archaeologist/Heritage Impact Assessor