

APPENDIX 1: GAMMA PERSEUS TRANSMISSION LINE ROUTE 1 – GEOLOGICAL MAPS

The following 15 map sections along Route 1 (purple line on maps) of the proposed new Gamma – Perseus 765 kV transmission line have been abstracted from the following five 1: 250 000 geological maps published by the Council for Geoscience, Pretoria: sheet 3122 Victoria West (VW), sheet 3022 Britstown (BT), sheet 3024 Colesberg, sheet 2924 Koffiefontein (KF) and sheet 2824 Kimberley (KB).

Arrows on the map sections indicate north.

Sectors and rock units of high palaeontological sensitivity are indicated by red font.

KEY TO GEOLOGICAL UNITS

Late Caenozoic Superficial deposits

Tertiary / Quaternary alluvium: pale yellow with “flying bird” symbol.

Calcrete: T-Qc / Qc (dark yellow)

Sand and sandy soil, aeolian sands of the Gordonia Fm, Kalahari Group: Qs (pale buff)

Pan sediments (e.g. Maps 48-50): blue stippled areas

Karoo Dolerite Suite

Dolerite sills and dykes: Jd (pink)

Lower Beaufort Group

Adelaide Subgroup (undifferentiated): Pa (pale green, CB sheet only)

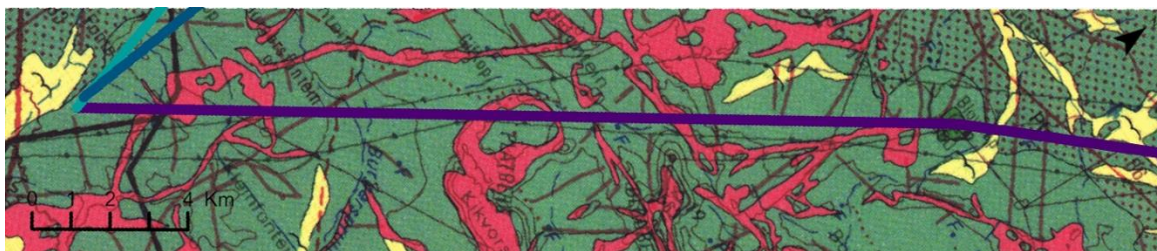
Teekloof Fm: Poortjie Mb Ptp, Hoedemaker Mb Pth

Abrahamskraal Fm: Pa (Pale green, VW & BT sheets only)

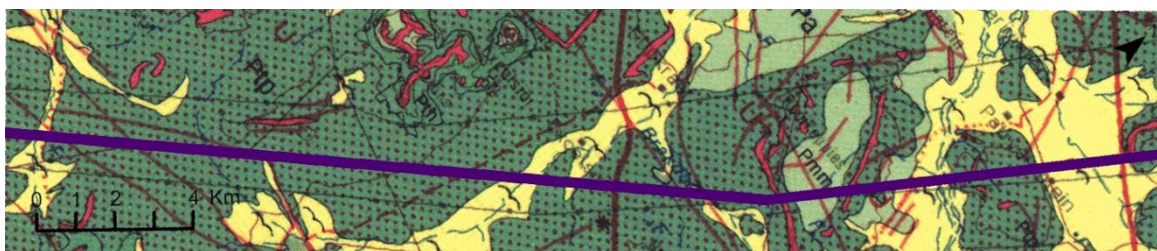
Ecca Group

Tierberg Fm: Pt (orange-brown / grey-brown).

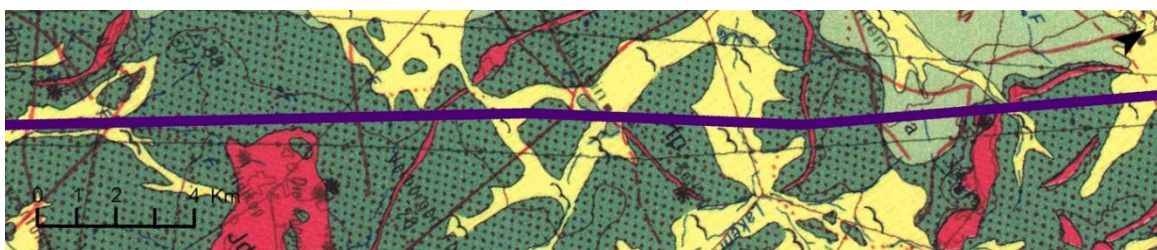
NB. Upper “Tierberg” succession near De Aar is actually Carnarvon facies of the Waterford Formation (Pc) (See text).



Route 1, section 38 VW



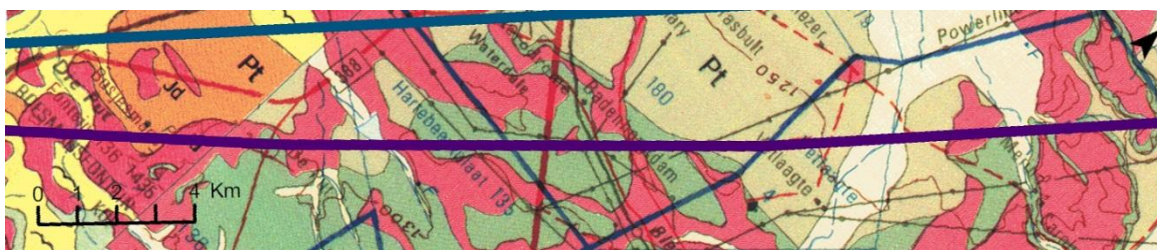
Route 1, section 39 VW



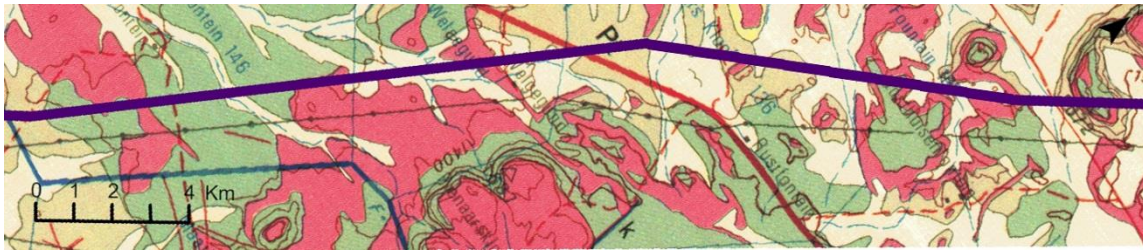
Route 1, section 40 VW



Route 1, section 41 VW - BT



Route 1, section 42BT - CB



Route 1, section 43 CB



Route 1, section 44 CB



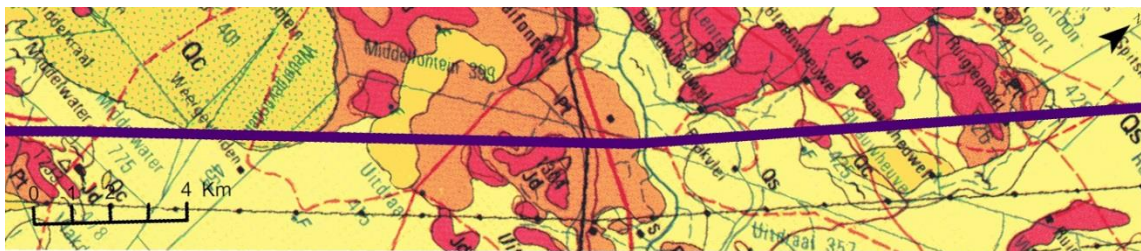
Route 1, section 45 CB - KF



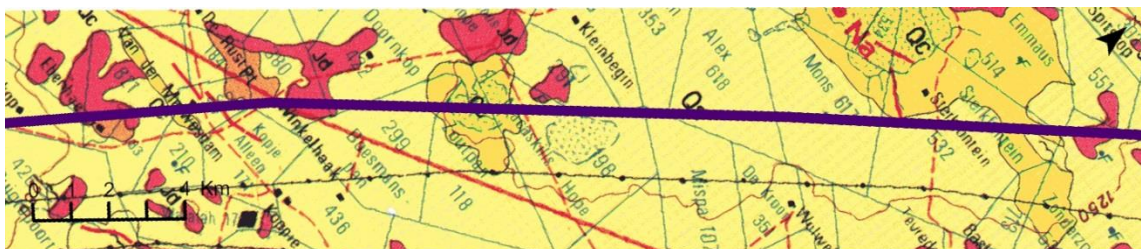
Route 1, section 46 KF



Route 1, section 47 KF



Route 1, section 48 KF



Route 1, section 49 KF



Route 1, section 50 KF - KB



Route 1, section 51 KB



Route 1, section 52 KB