

APPENDIX 2: GAMMA PERSEUS TRANSMISSION LINE ROUTE 2 (CENTRAL) – GEOLOGICAL MAPS

The following 17 map sections along Route 2 (dark blue line) of the proposed new Gamma – Perseus 765 kV transmission Route have been abstracted from the following five 1: 250 000 geological maps published by the Council for Geoscience, Pretoria: sheet 3122 Victoria West (VW), sheet 3022 Britstown (BT), sheet 3024 Colesberg, sheet 2924 Koffiefontein (KF) and sheet 2824 Kimberley (KB).

Arrows on the map sections indicate north.

Sectors and rock units of high palaeontological sensitivity are indicated by red font.

KEY TO GEOLOGICAL UNITS

Late Caenozoic Superficial deposits

Tertiary / Quaternary alluvium: pale yellow with “flying bird” symbol.

Calcrete: T-Qc / Qc (dark yellow)

Sand and sandy soil, aeolian sands of the Gordonia Fm, Kalahari Group: Qs (pale buff)

Pan sediments (e.g. Maps 48-50): blue stippled areas

Karoo Dolerite Suite

Dolerite sills and dykes: Jd (pink)

Lower Beaufort Group

Adelaide Subgroup (undifferentiated): Pa (pale green, CB sheet only)

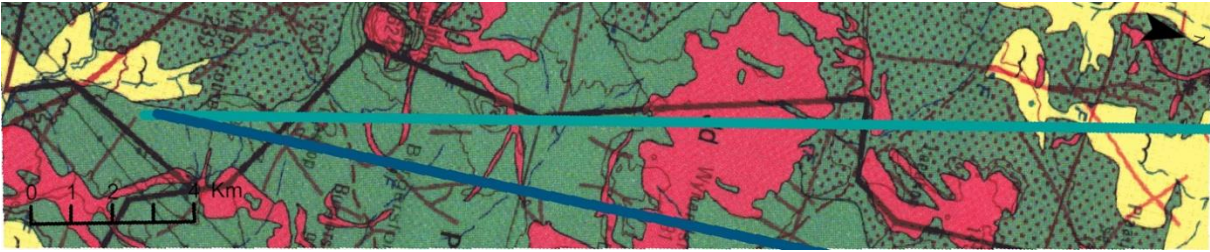
Teekloof Fm: Poortjie Mb Ptp, Hoedemaker Mb Pth

Abrahamskraal Fm: Pa (Pale green, VW & BT sheets only)

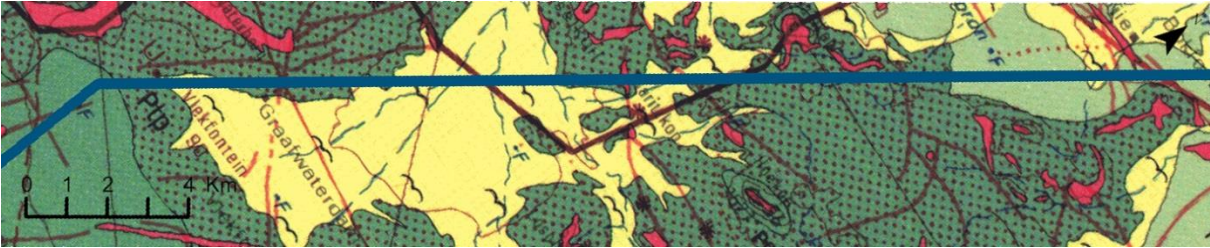
Ecca Group

Tierberg Fm: Pt (orange-brown / grey-brown).

NB. Upper “Tierberg” succession near De Aar is actually Carnarvon facies of the Waterford Formation (Pc) (See text).



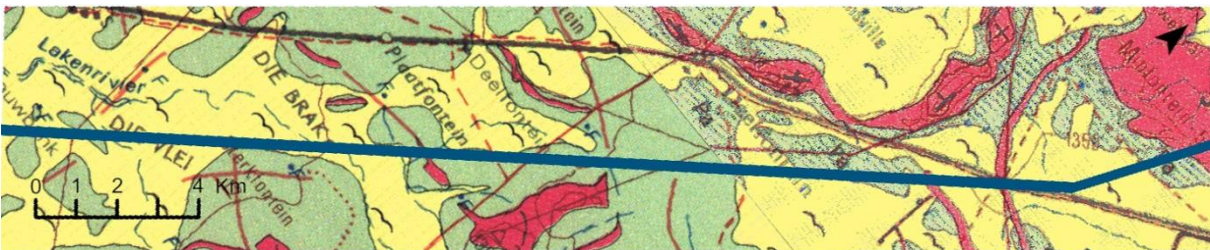
Routes 2 & 3, section 1 VW



Route 2, section 37 VW



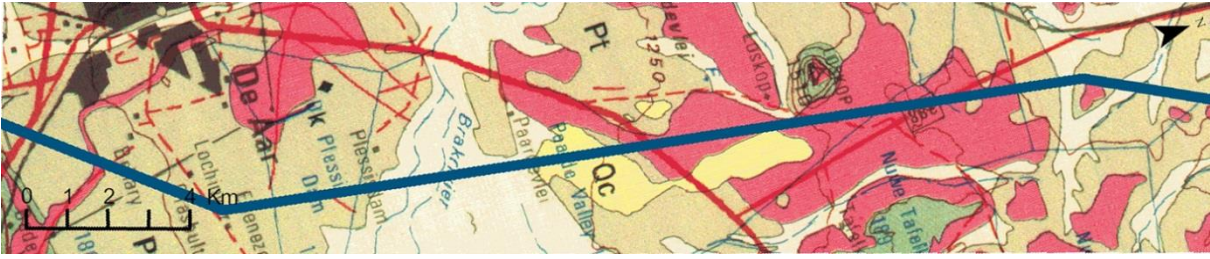
Route 2, section 36 VW



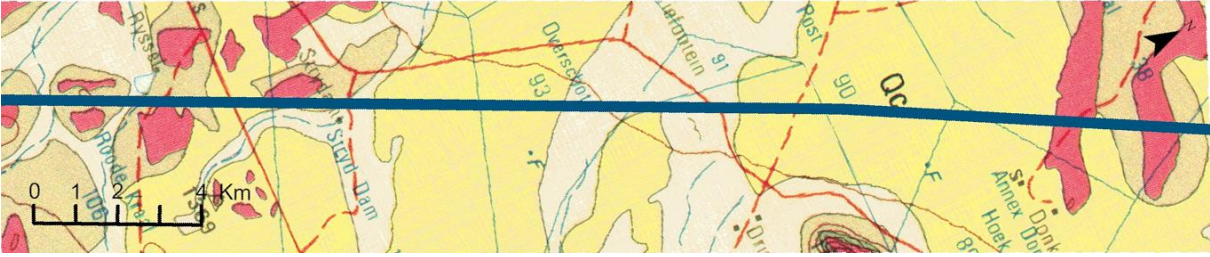
Route 2, section 35 VW-BT



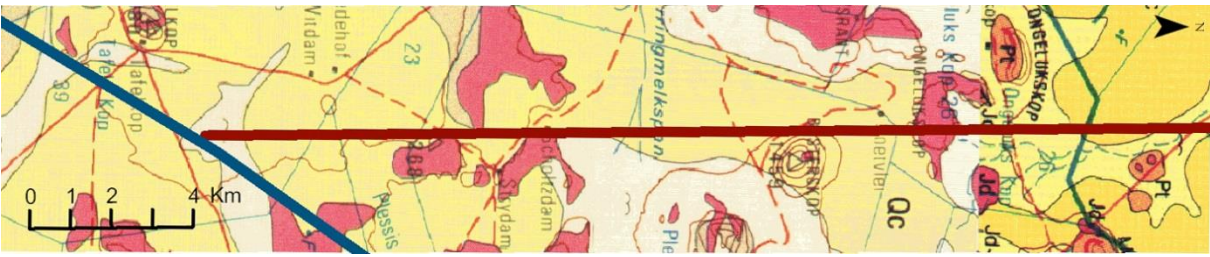
Route 2, section 34 BT-CB



Route 2, section 33 CB



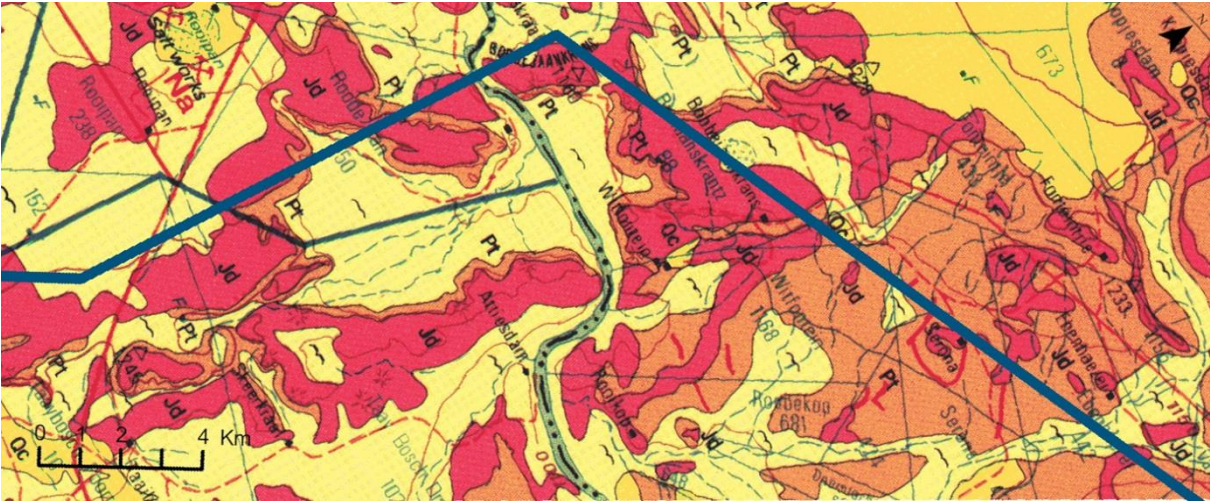
Route 2, section 32 CB



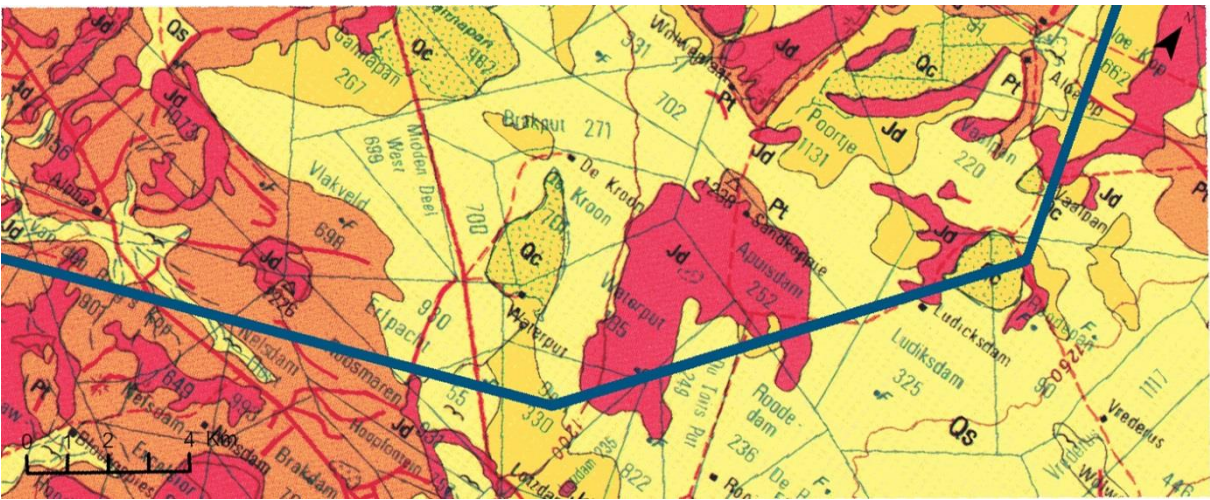
Route 2, section 27 KF - CB



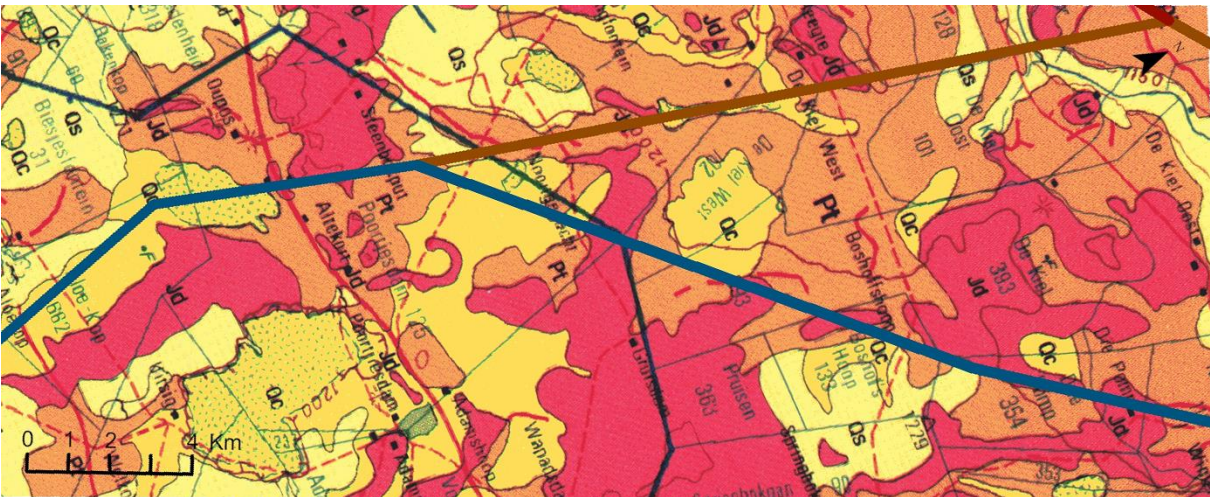
Route 2, section 31 CB - KF



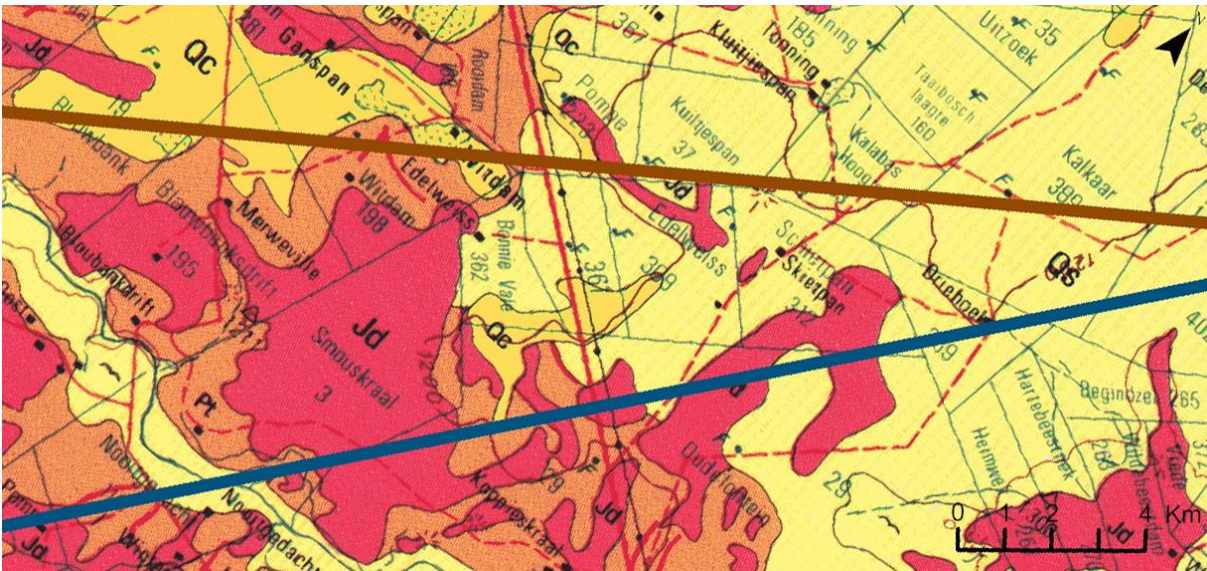
Route 2, section 30 KF



Route 2, section 29 KF



Route 2, section 28 KF



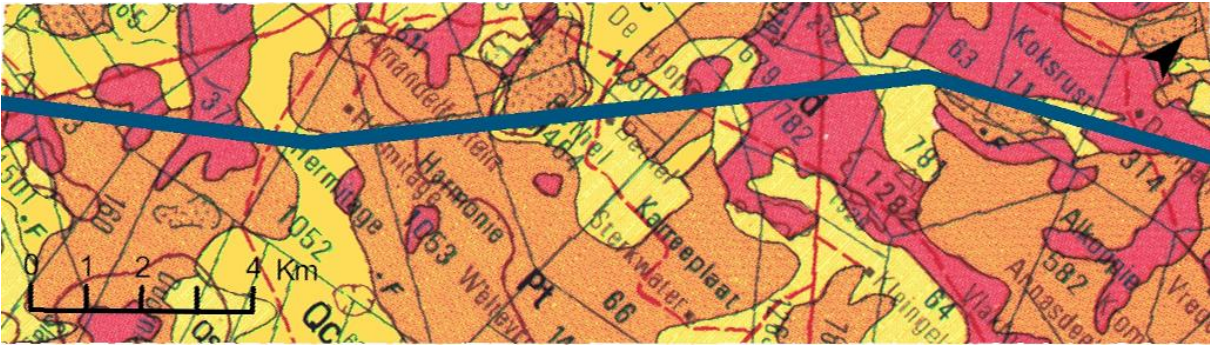
Route 2 & 4, section 22 KF



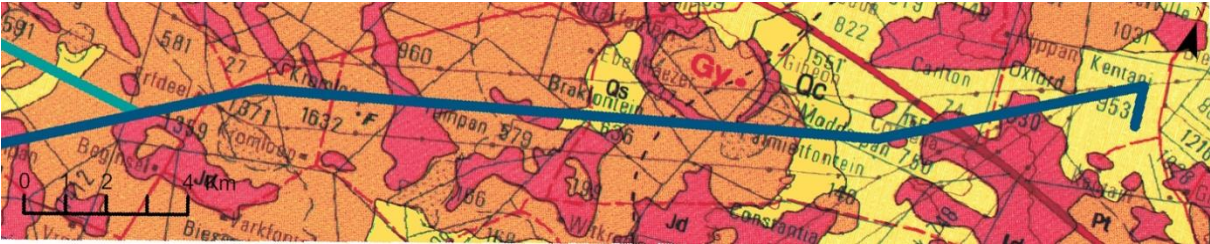
Route 2, section 21 KF



Route 2 & 5, section 20 KF - KB



Route 2, section 19 KB



Route 1 & 2, section 18 KB