

**LETTER OF EXEMPTION FOR THE GLEN IVES FARM
IRRIGATION SUPPLY DAM, UGU DISTRICT
MUNICIPALITY, KZN**

FOR INHLABA CONSULTING

DATE: 27 JUNE 2021

By Gavin Anderson

**Umlando: Archaeological Surveys and Heritage
Management**

PO Box 10153, Meerensee, 3901

Phone: 035-7531785 Cell: 0836585362

umlando@gmail.com



Abbreviations

HP	Historical Period
IIA	Indeterminate Iron Age
LIA	Late Iron Age
EIA	Early Iron Age
ISA	Indeterminate Stone Age
ESA	Early Stone Age
MSA	Middle Stone Age
LSA	Late Stone Age
HIA	Heritage Impact Assessment
PIA	Palaeontological Impact Assessment

INTRODUCTION

The Jon Mackenzie Family Trust currently own and operate several commercial timber farms in the Harding region of the Ugu District Municipality, including the Glen Ives Farm. As part of the proponent's approach to diversifying their operation, they have decided to introduce avocado pear farming. The first phase of 10 ha is planned to be rolled out in 2022, with the intention of incrementally increasing the size of the avocado pear orchard to 50 ha in the subsequent five years

To meet the water supply demands of avocado pears, Glen Ives Farm has identified a dam site on a perennial stream, which drains into the Weza River. Both the design and Water Use License Application, as required by the National Water Act, 1998 (Act No. 36 of 1998), have been submitted (with the decision on the Water Use License Application pending).

The earth embankment dam will have a toe-crest-height of 4.9 m, a footprint of < 3 ha and will enable an irrigation requirement of 2,500m³/ha/annum.

Umlando was requested to assist in the HIA and suggested that it be exempt from further HIA. Figures 1 – 4 show the location of the site.

FIG. 1 GENERAL LOCATION OF THE STUDY AREA

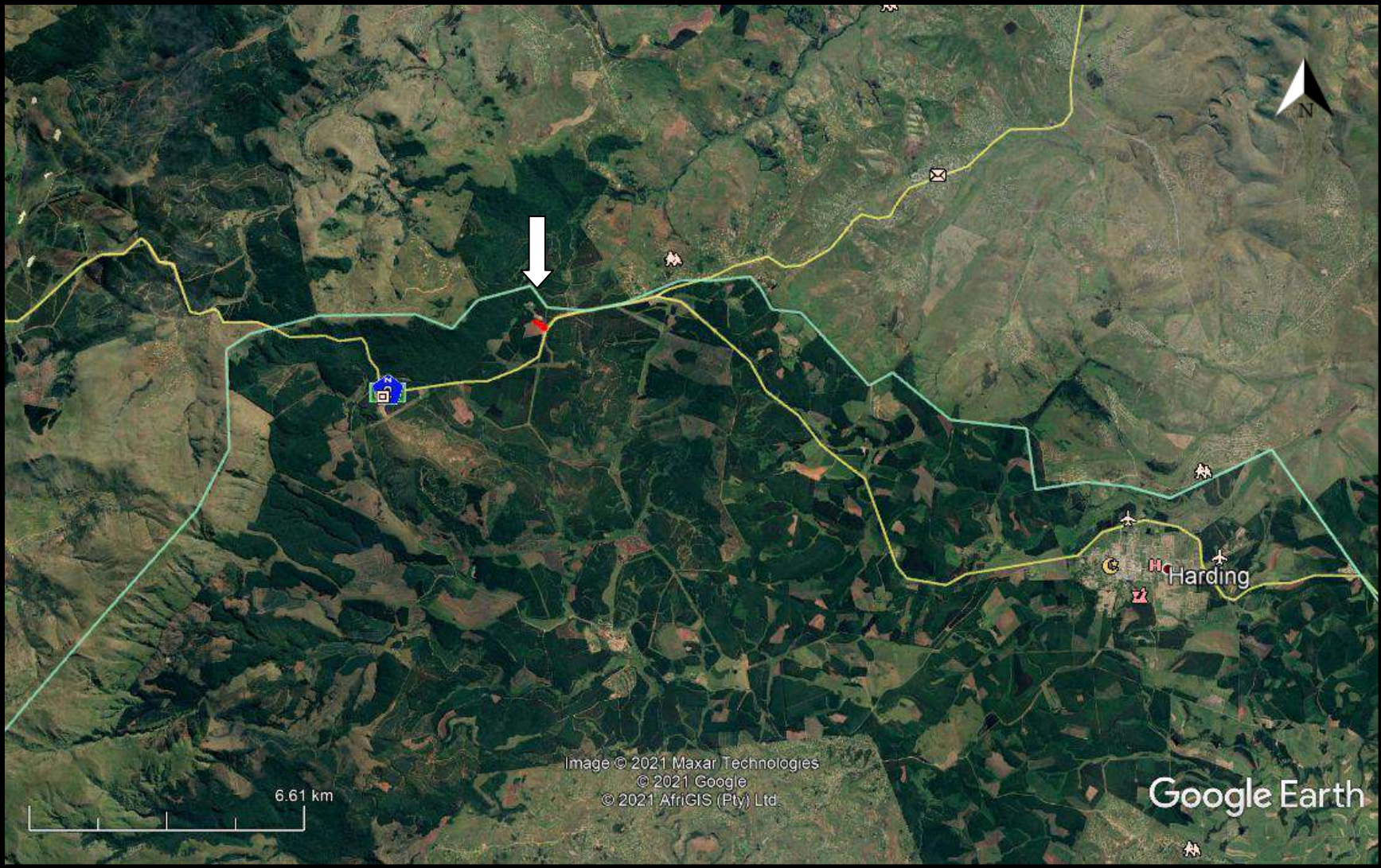


FIG. 2: AERIAL OVERVIEW OF THE STUDY AREA



FIG. 3: TOPOGRAPHICAL OVERVIEW OF THE EASTERN STUDY AREA (1996)

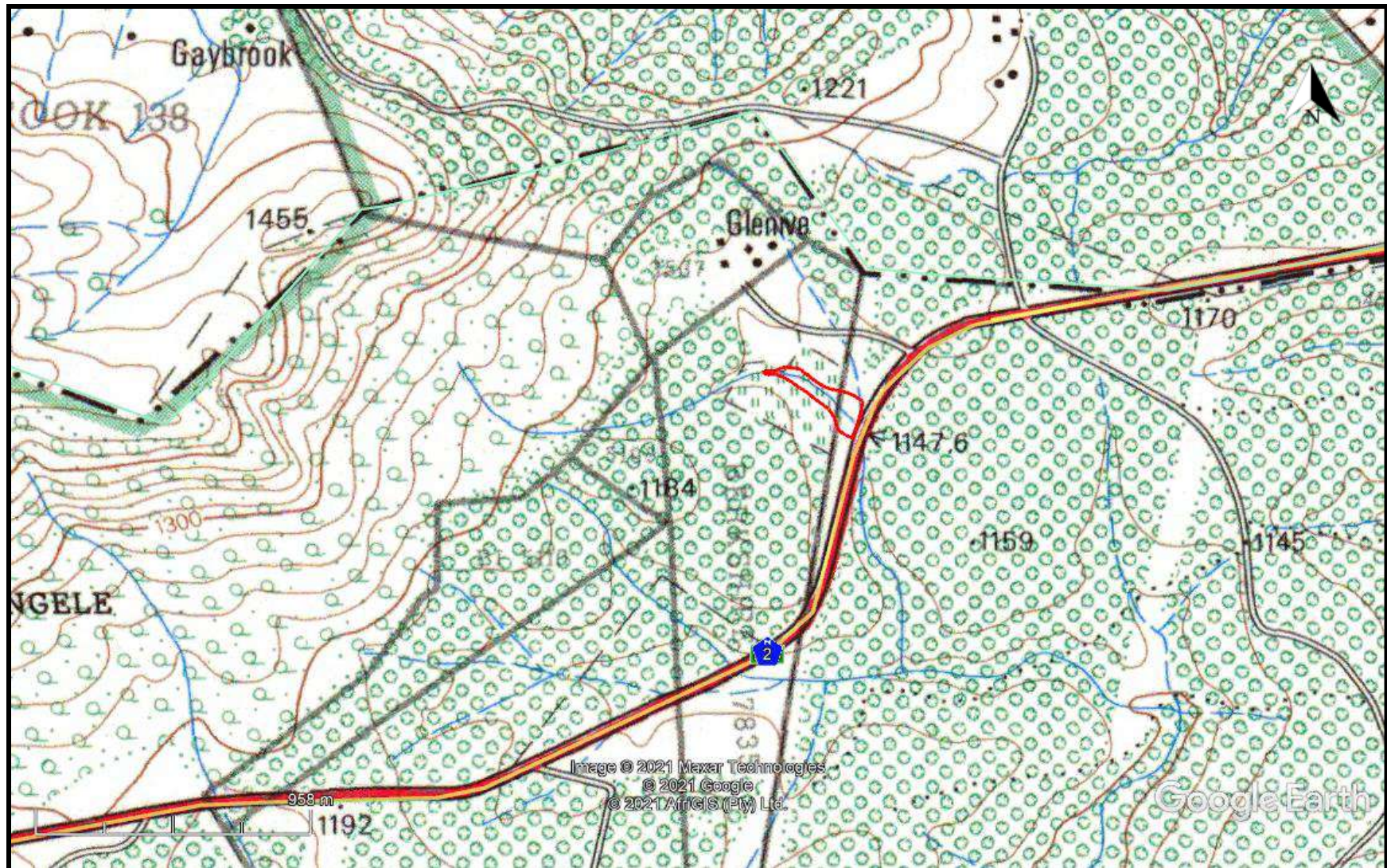


FIG. 4: SCENIC VIEWS OF THE SITE



The desktop study consisted of analysing various maps for evidence of prior habitation in the study area, as well as for previous archaeological surveys. The archaeological database indicates that there are archaeological sites in the much wider area (fig. 5). These sites include all types of Stone Age and Iron Age sites, as well as a historical cemetery. No sites occur in the study area.

No national monuments, battlefields, or historical cemeteries are known to occur in the study area or within 100m of it.

The historical maps indicate that the surrounding area had been disturbed by afforestation for several decades (fig. 6 – 7).

The palaeontological map indicates the area is of high palaeontological sensitivity (fig. 8). However, changing the area from wetland to a dam will not change the effect on potential fossil bearing layers more than what is currently occurring.

It is highly unlikely that heritage sites would occur in the study since it is a wetland, or borders on a wetland.

The heritage desktop study suggests that no further mitigation should be required for this development.

FIG. 5: LOCATION OF KNOWN HERITAGE SITES NEAR THE STUDY AREA

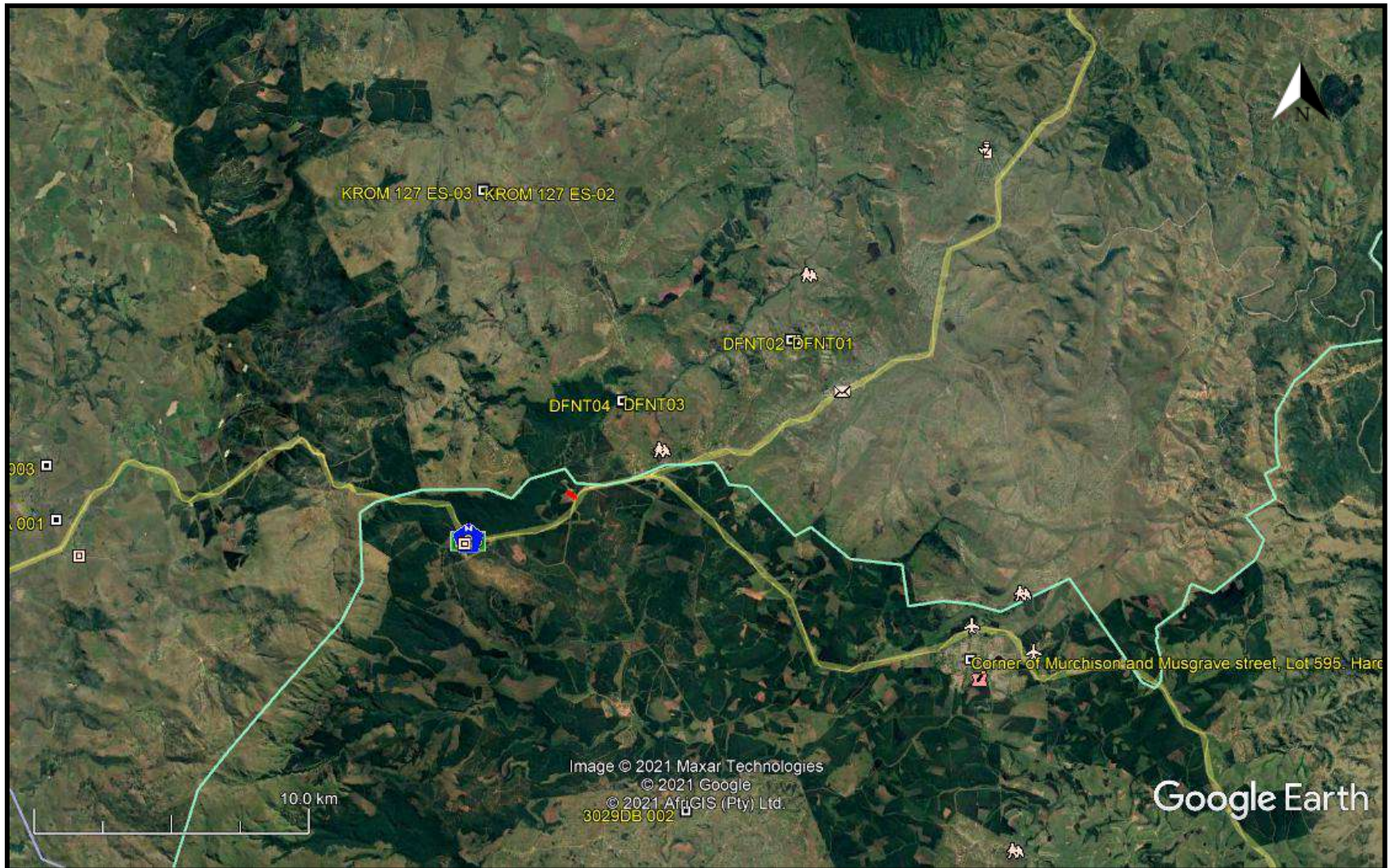


FIG. 6: STUDY AREA IN 1968

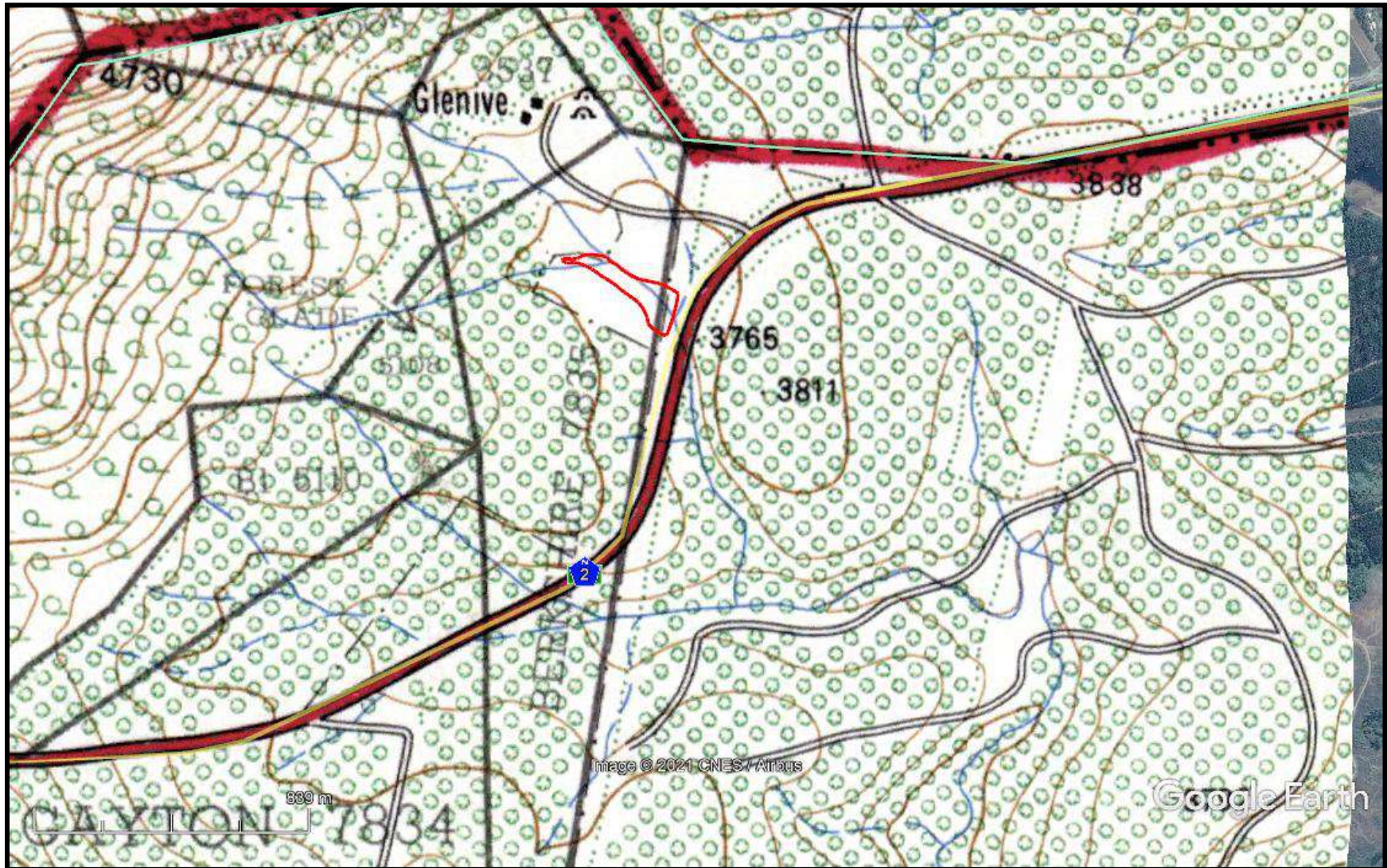


FIG. 7: STUDY AREA IN 2005

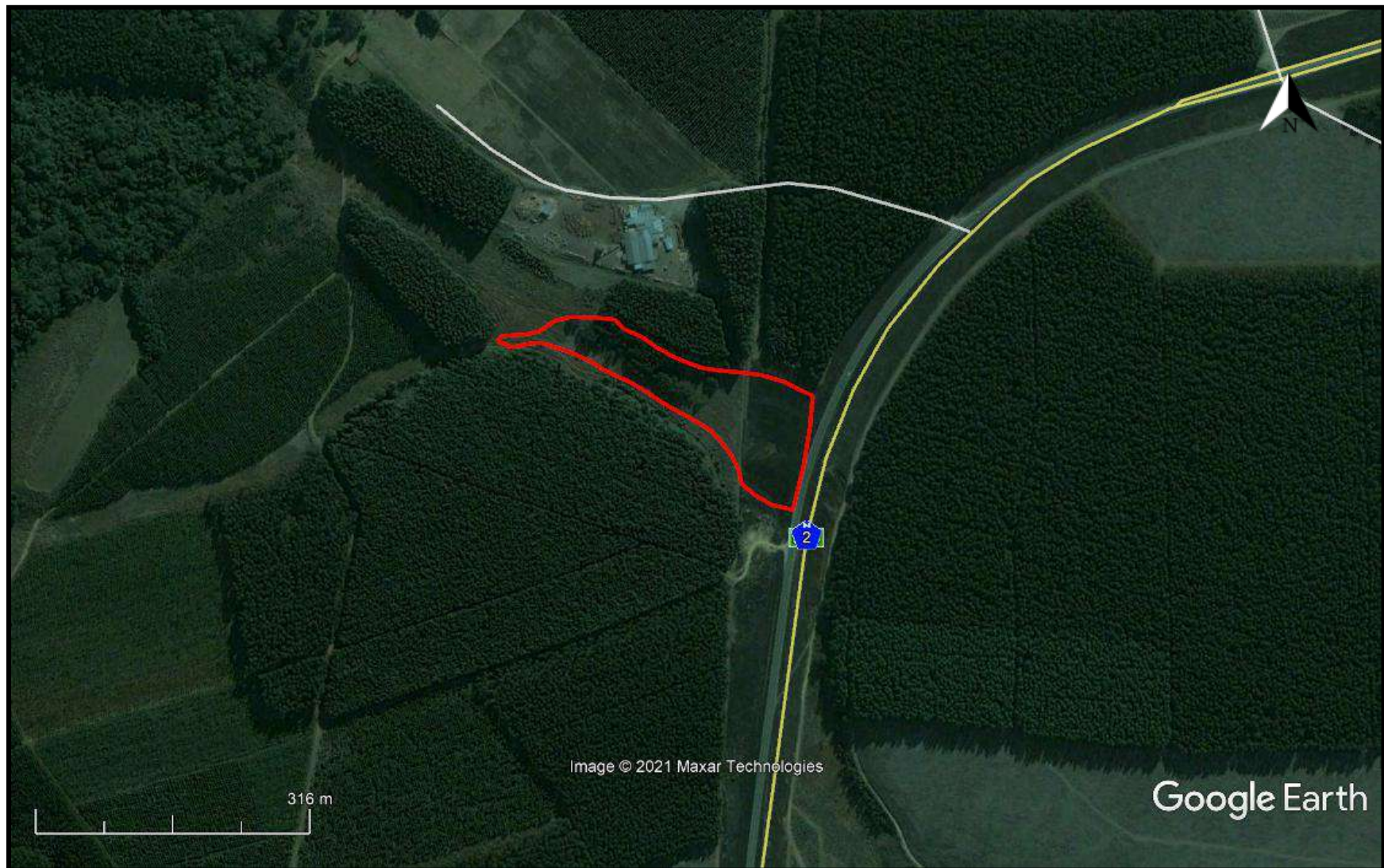


FIG. 8: PALAEOLOGICAL SENSITIVITY

COLOUR	SENSITIVITY	REQUIRED ACTION
RED	VERY HIGH	field assessment and protocol for finds is required
ORANGE/YELLOW	HIGH	desktop study is required and based on the outcome of the desktop study, a field assessment is likely
GREEN	MODERATE	desktop study is required
BLUE	LOW	no palaeontological studies are required however a protocol for finds is required
GREY	INSIGNIFICANT/ZERO	no palaeontological studies are required
WHITE/CLEAR	UNKNOWN	these areas will require a minimum of a desktop study. As more information comes to light, SAHRA will continue to populate the map.

CONCLUSION

The desktop study concludes that there is a very low probability of general heritage and archaeological sites occurring within the study area. The possible palaeontological bearing strata will not be affected by the dam. No further heritage mitigation should be required.

EXPERIENCE OF THE HERITAGE CONSULTANT

Gavin Anderson has a M. Phil (in archaeology and social psychology) degree from the University of Cape Town. Gavin has been working as a professional archaeologist and heritage impact assessor since 1995. He joined the Association of Professional Archaeologists of Southern Africa in 1998 when it was formed. Gavin is rated as a Principle Investigator with expertise status in Rock Art, Stone Age and Iron Age studies. In addition to this, he has worked on both West and East Coast shell middens, Anglo-Boer War sites, and Historical Period sites.

DECLARATION OF INDEPENDENCE

I, Gavin Anderson, declare that I am an independent specialist consultant and have no financial, personal or other interest in the proposed development, nor the developers or any of their subsidiaries, apart from fair remuneration for work performed in the delivery of heritage assessment services. There are no circumstances that compromise the objectivity of my performing such work.

A handwritten signature in black ink, appearing to read 'G. Anderson', with a horizontal line underneath.

Gavin Anderson
Archaeologist/Heritage Impact Assessor