

# Exemption of a Phase 1 Palaeontological Impact Assessment for a proposed new aboveground and subsurface installation of a Vodacom optic fibre cable along provincial road reserves in the vicinity of Groblersdal, Limpopo Province.

---

Report prepared for Enviroworks Environmental Consultants, Private Bag X01, Brandhof 9324 by Paleo Field Services, PO Box 38806, Langenhovenpark 9330

Proposed development calls for the aboveground and subsurface installation of a 62 km – long Vodacom optic fibre cable along provincial road reserves in and around Groblersdal, Limpopo Province (**Fig. 1**). In most areas, the optic fibre cable will be mounted on I-Section Poles, while trenching will be restricted to urban areas where subsurface installation of the cable is required. The following will also apply:

1. The 9m poles will be planted at a depth of 1.5 m and a hole will be opened for this purpose with the dimensions of 0.35m x 0.35m (= 0.1225m<sup>2</sup> or 0.147 m<sup>3</sup>);
2. The 11m poles will be planted at a depth of 1.7m and a hole will be opened for this purpose with the dimensions of 0.45m x 0.45m (= 0.2025m<sup>2</sup> or 0.3038 m<sup>3</sup>);
3. Poles will be planted at intervals ranging between 80 and 280 metres;
4. The crossing over the watercourse will be undertaken by overhead installation with a maximum of 3 I-Section Poles within the watercourse or within 100 metres of the watercourse.

Locality data: 1:250 000 geological map 2528 Pretoria

1:50 000 topographical map 2529AB Groblersdal

General coordinates (**Fig. 1**):

A) 25°10'5.59"S 29°23'22.01"E

B) 25° 1'39.32"S 29°22'11.62"E

C) 25° 2'26.75"S 29°30'34.52"E

The study area is underlain by palaeontologically insignificant Bushveld Complex granites and there are currently no records of vertebrate fossil occurrences from superficial overburden (e.g. Quaternary fluvial deposits near watercourses) in the area. The proposed development will take place on degraded terrain in a built-up area, and on land formerly altered by road construction (road reserves). It is recommended that the proposed development is exempt from a Phase 1 Palaeontological Impact Assessment.

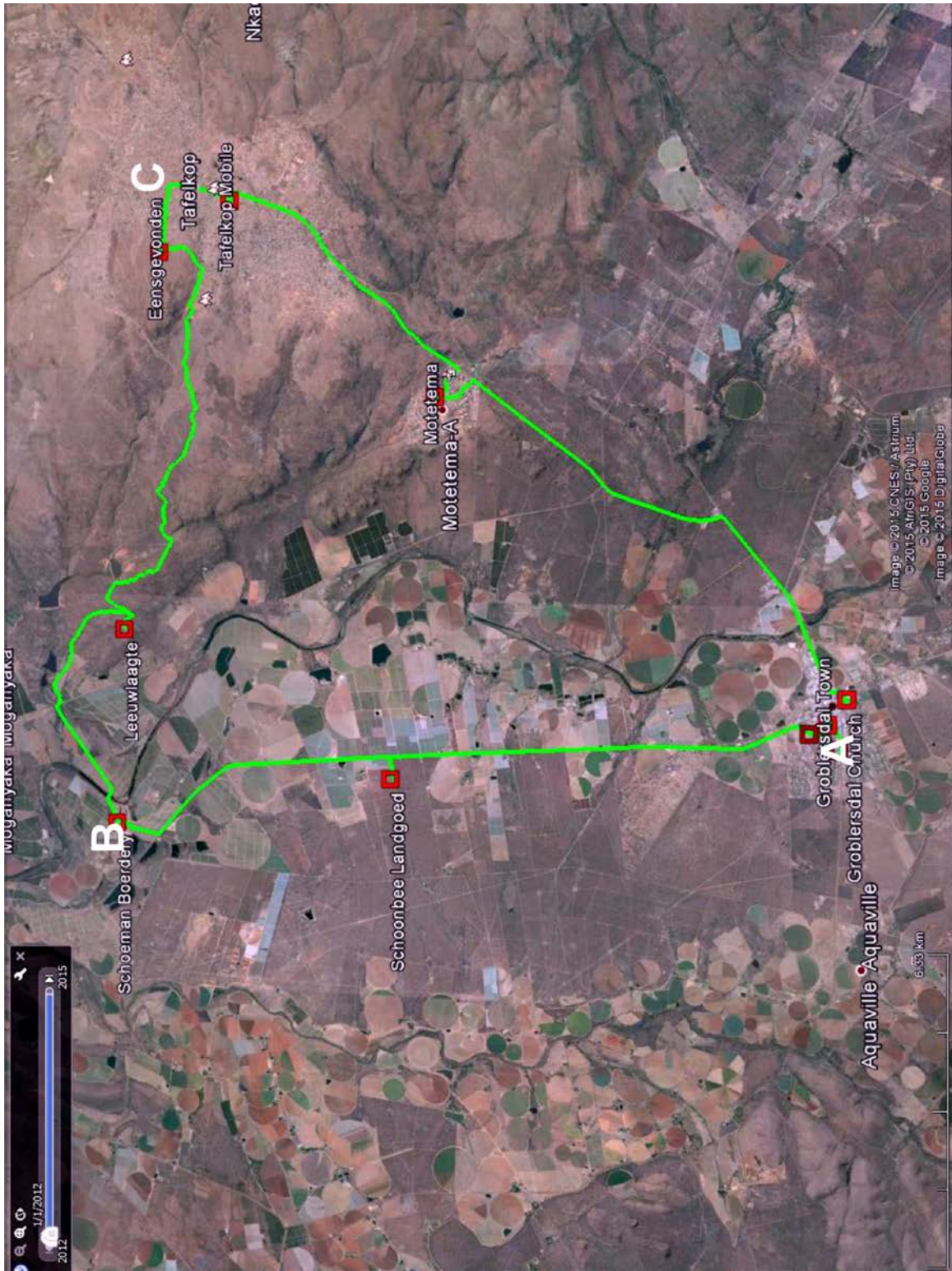


Figure 1. Aerial view of the proposed optic fibre route (green line).