

Exemption of a Phase 1 Archaeological Impact Assessment for a proposed new overhead installation of a Vodacom optic fibre cable along provincial road reserves in the vicinity of Groblersdal, Limpopo Province*.

Site: Groblersdal, Limpopo Province

Map Ref.: 1:50 000 topographical map 2529AB Groblersdal

General coordinates (**Fig. 1**):

A) 25°10'5.59"S 29°23'22.01"E

B) 25° 1'39.32"S 29°22'11.62"E

C) 25° 2'26.75"S 29°30'34.52"E

Proposed development calls for the overhead (aboveground) installation of a 62 km – long Vodacom optic fibre cable along provincial road reserves in the vicinity of Groblersdal, Limpopo Province (**Fig. 1 - 3**). In most areas, the optic fibre cable will be mounted on I-Section Poles either 9 metres or 11 metres high. The following will furthermore apply:

1. The 9m poles will be planted at a depth of 1.5 m and a hole will be opened for this purpose with the dimensions of 0.35m x 0.35m (= 0.1225m² or 0.147 m³);
2. The 11m poles will be planted at a depth of 1.7m and a hole will be opened for this purpose with the dimensions of 0.45m x 0.45m (= 0.2025m² or 0.3038 m³);
3. Poles will be planted at intervals ranging between 80 and 280 metres;
4. The crossing over the watercourse will be undertaken by overhead installation with a maximum of 3 I-Section Poles within the watercourse or within 100 metres of the watercourse.

The area around Groblersdal is mostly under researched. Reports found on the SAHRIS online database (<http://www.sahra.org.za/sahris>) are the main source of information for this area. No surface archaeological remains were found during previous archaeological surveys conducted in the Groblersdal area (van der Walt 2011; van Vollenhoven *et.al* 2014).

The proposed project is regarded as a low impact development that will take place on degraded terrain in a built-up area, and on land formerly altered by farming activities and road construction. Potential archaeological impact that may result from the installation of the

overhead fibre optic cable is considered to extremely low. It is recommended that the proposed development is exempt from a Phase 1 Archaeological Impact Assessment.

Yours truly,

A handwritten signature in black ink, appearing to read 'L Rossouw', written in a cursive style.

Dr Lloyd Rossouw
Archaeological Impacts Unit
National Museum Bloemfontein
Tel. 051 4479 609
Cell. 0842505992
lloyd@nasmus.co.za

***Report prepared for Enviroworks Environmental Consultants, 21 Dromedaris Street Dan Pienaar, Bloemfontein 9301**

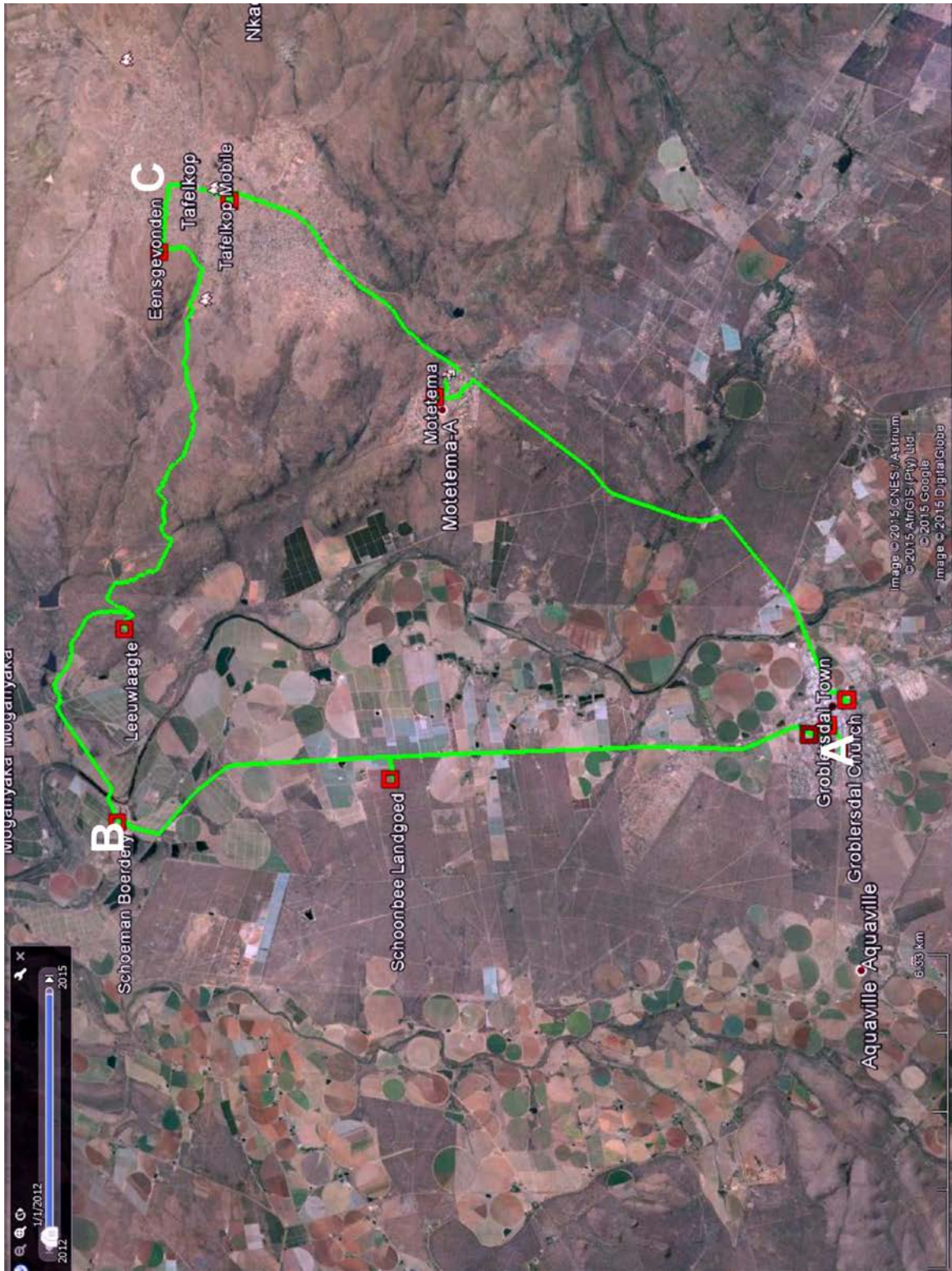


Figure 1. Aerial view of the proposed optic fibre route (green line).

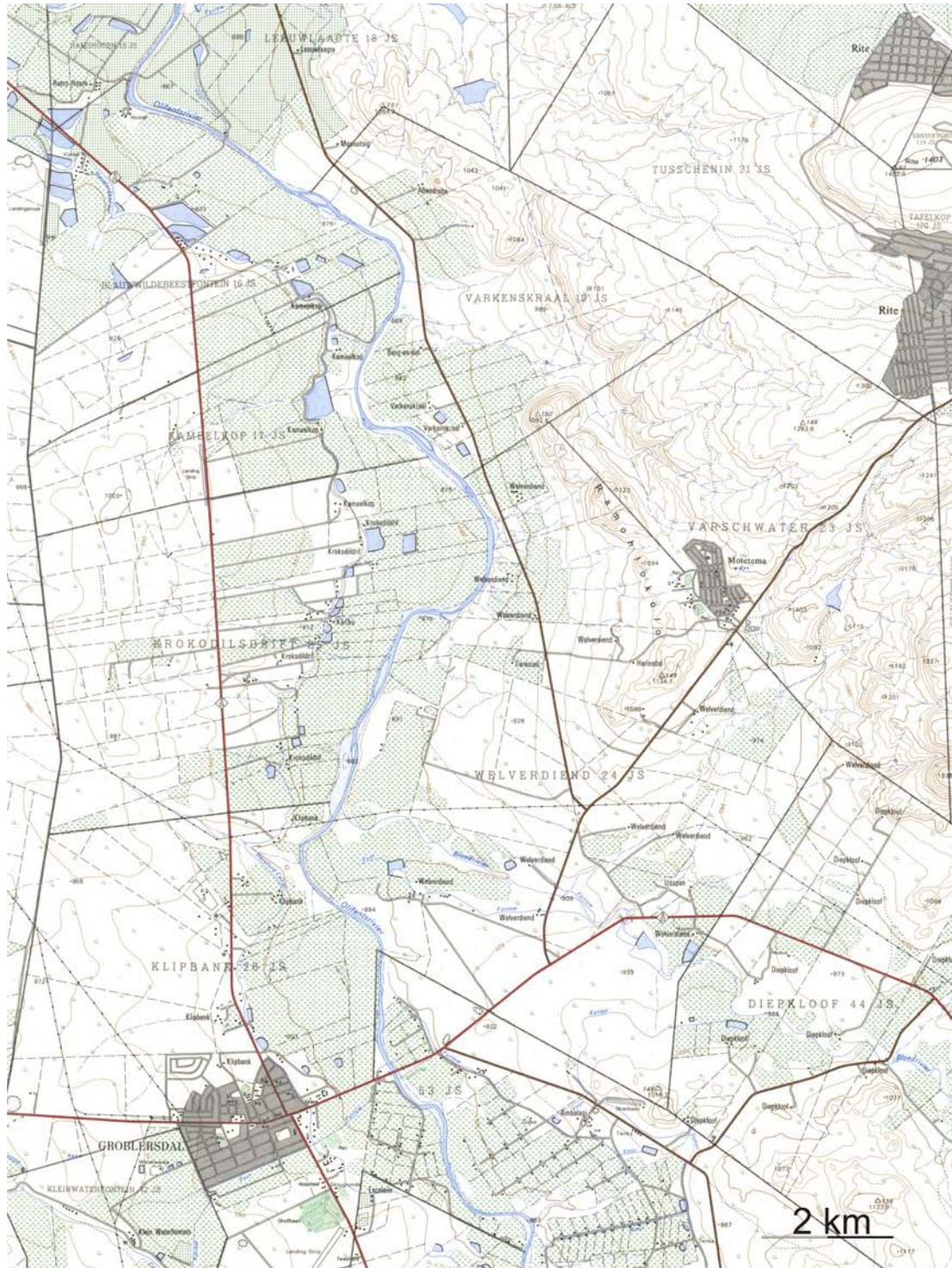


Figure 2. Map of Groblersdal and environs (portion of 1:50 000 scale topographical map 2529AB Groblersdal).



Figure 3. View of the road reserve along the proposed route.