

Heritage Impact Assessment

Heritage Impact Assessment for the Proposed Agricultural
Development on the Farm Grootkuil near Koedoeskop,
Limpopo Province.

Compiled for:

Jonk Begin Omgewings Dienste

Survey conducted & Report compiled by:

Marko Hutten

March 2013

Hutten Heritage Consultants
P.O. Box 4209
Louis Trichardt
0920
Tel: +27 76 038 4185
E-mail: marko.hutten@lantic.net

Acknowledgements:

CLIENT: Jonk Begin Omgewings Dienste

CONTACT PERSON: Ms. L. du Plessis
PO Box 70
Koedoeskop
0361
+27 (0) 83 262 5270
bothadp@gmail.com / botha@alliedgroup.co.za

CONSULTANT: Hutten Heritage Consultants

CONTACT PERSON: Marko Hutten (BA Hons. Archaeology, UP)
Accredited Member of the Association of Southern African
Professional Archaeologists (#057)

REPORT AUTHOR: Marko Hutten

FIELD WORKER: Thomas Mulaudzi

SIGNED OFF BY: MARKO HUTTEN

.....

Executive Summary

Site name and location: Proposed agricultural development on parts of the Remainder Portion and Portions 2 & 10 of the Farm Grootkuil 376 KQ, approximately 15km north-west of Koedoeskop in the Limpopo Province.

Local Authority: Waterberg District Municipality.

Developer: Dari Trust.

Date of field work: 06 February 2013.

Date of report: March 2013.

Findings: The developer, Dari Trust, has earmarked two areas for agricultural development. The first area was approximately 30ha in size and the second area was approximately 15ha in size. Both these showed signs of previous agricultural activities on large parts of the proposed sites.

An old house was identified at the second area. This house was recently renovated and will be occupied soon. The house was near the proposed development, but will not be affected by the development.

No other sites of heritage value and/or significance were identified. No site-specific actions or any further heritage mitigation measures are recommended for the rest of the study areas as no other heritage resource sites or finds of any value or significance were identified in the indicated study areas. The proposed agricultural development on the Remainder Portion and Portions 2 & 10 of the Farm Grootkuil 376 KQ at the indicated areas can continue from a heritage point of view.

Disclaimer: *Although all possible care is taken to identify all sites of cultural importance during the investigation of study areas, it is always possible that hidden or sub-surface sites and/or graves could be overlooked during the study. Hutten Heritage Consultants and its personnel will not be held liable for such oversights or for costs incurred as a result of such oversights.*

TABLE OF CONTENTS

1. INTRODUCTION.....	5
2. LEGISLATIVE REQUIREMENTS	5
3. PROPOSED PROJECT	6
4. PROJECT AREA DESCRIPTION	6
5. ARCHAEOLOGICAL HISTORY OF THE AREA.....	7
6. METHODOLOGY	14
PHYSICAL SURVEY	14
INTERVIEWS.....	14
RESTRICTIONS	14
DOCUMENTATION.....	14
7. ASSESSMENT CRITERIA	14
SITE SIGNIFICANCE.....	15
IMPACT RATING:.....	16
CERTAINTY	16
DURATION	16
MITIGATION.....	16
8. ASSESSMENT OF SITES AND FINDS.....	17
GROOTKUIL AGRICULTURAL DEVELOPMENT	17
<i>Site GK 001:</i>	17
9. CONCLUSION AND RECOMMENDATIONS	17
GROOTKUIL AGRICULTURAL DEVELOPMENT	17
<i>Site GK 001:</i>	18
10. REFERENCES	19

ADDENDUM A Photographs

- Photo 1: View of the previously ploughed areas at the first site.
- Photo 2: View of the dense vegetation at the first site.
- Photo 3: View of the surrounding agricultural activities.
- Photo 4: View of the dense vegetation at the second site.
- Photo 5: View of the dense vegetation at the second site.
- Photo 6: View of the surrounding agricultural activities.
- Photo 7: View of the old house identified next to the second site.

ADDENDUM B Location Maps

1. Introduction

Hutten Heritage Consultants was contracted by Jonk Begin Omgewings Dienste to conduct a Heritage Impact Assessment (HIA) on the proposed agricultural development on parts of the Remainder Portion and Portions 2 & 10 of the Farm Grootkuil 376 KQ, approximately 15km north-west of Koedoeskop in the Limpopo Province.

The aim of the study was to identify all heritage sites, to document and to assess their significance within Local, Provincial and National context. The report outlines the approach and methodology implemented before and during the survey, which includes in Phase 1: Information collection from various sources and social consultations; Phase 2: Physical surveying of the area on foot and by vehicle; and Phase 3: Reporting the outcome of the study.

This HIA forms part of the Environmental Impact Assessment (EIA) as required by various Acts and Laws as described under the next heading and is intended for submission to the provincial South African Heritage Resources Agency (SAHRA) for peer review.

Minimum standards for reports, site documentation and descriptions are set by the Association of Southern African Professional Archaeologists (ASAPA) in collaboration with SAHRA. ASAPA is a legal body representing professional archaeology in the Southern African Development Community (SADC) region. As a member of ASAPA, these standards are tried to be adhered to.

The extent of the proposed development sites were determined as well as the extent of the areas to be affected by secondary activities (access routes, construction camps, etc.) during the development.

2. Legislative Requirements

The identification, evaluation and assessment of any cultural heritage site, artefact or find in the South African context is required and governed by the following legislation:

National Environmental Management Act (NEMA) Act 107 of 1998
National Heritage Resources Act (NHRA) Act 25 of 1999
Minerals and Petroleum Resources Development Act (MPRDA) Act 28 of 2002
Development Facilitation Act (DFA) Act 67 of 1995

The following sections in each Act refer directly to the identification, evaluation and assessment of cultural heritage resources.

National Environmental Management Act (NEMA) Act 107 of 1998
Basic Environmental Assessment (BEA) – Section (23)(2)(d)
Environmental Scoping Report (ESR) – Section (29)(1)(d)
Environmental Impacts Assessment (EIA) – Section (32)(2)(d)

Environmental Management Plan (EMP) – Section (34)(b)
National Heritage Resources Act (NHRA) Act 25 of 1999
Protection of Heritage resources – Sections 34 to 36; and
Heritage Resources Management – Section 38
Minerals and Petroleum Resources Development Act (MPRDA) Act 28 of 2002
Section 39(3)
Development Facilitation Act (DFA) Act 67 of 1995
The GNR.1 of 7 January 2000: Regulations and rules in terms of the Development
Facilitation Act, 1995. Section 31.

3. Proposed Project

The developer, Dari Trust through Mr. D.J. Slabbert, proposed the development of two separate crop circles of various sizes on the proposed properties (see maps: proposed development).

The agricultural development will include bush clearing and the ripping of the top soil. It will also include the installation of water pumps and an irrigation system for the effective irrigation of planted crops. The irrigation systems will be connected to existing irrigation system which sourced their water from the nearby Krokodil River.

The first proposed agricultural development will be located on parts of Portions 2 & 10 of the Farm Grootkuil 376 KQ, which measured approximately 30ha in size. The anticipated footprint of the proposed development will cover most of the 30ha, but no site development maps were available for the purpose of this report.

The second proposed agricultural development will be located on a part of the Remainder Portion of the Farm Grootkuil 376 KQ, which measured approximately 15ha in size. The anticipated footprint of the proposed development will cover most of the 15ha, but no site development maps were available for the purpose of this report.

The purpose of the study was to determine if the proposed areas were suitable for the agricultural developments from a heritage point of view.

The project was tabled during January 2013 and the developer intends to commence as soon as possible after receipt of the ROD from the Department of Environmental Affairs.

4. Project Area Description

The proposed agricultural development will be situated on parts the Remainder Portion and Portions 2 & 10 of the Farm Grootkuil 376 KQ, approximately 15km north-west of Koedoeskop in the Limpopo Province.

The first proposed agricultural development will be located on parts of Portions 2 & 10 of the Farm Grootkuil 376 KQ, which measured approximately 30ha in size. The anticipated

footprint of the proposed development will cover most of the 30ha. Most parts of the proposed site was previously exposed to intensive ploughing and planting as can be seen from the re-growth of various pioneer plant species (photo 1). Some parts however, were not previously planted and were used as grazing facilities for cattle. These parts were heavily overgrown with vegetation (photo 2). The proposed site was surrounded by existing agricultural fields (photo 3).

The second proposed agricultural development will be located on parts of the Remainder Portion of the Farm Grootkuil 376 KQ, which measured approximately 15ha in size. The anticipated footprint of the proposed development will cover most of the 15ha. Parts of the proposed site was also previously exposed to intensive ploughing and planting as can be seen from the re-growth of various pioneer plant species (photo 4). Other parts however, were not previously planted and were used as grazing facilities for cattle. These parts were heavily overgrown with vegetation (photo 5). The proposed site was also surrounded by existing agricultural fields (photo 6).

Both properties were flat with red/brown sandy soils. Previous agricultural activities have disturbed most of the two proposed areas.

The proposed development will be situated on the Northam 2427 CD 1:50 000 topographical map (See Appendix B: Location Maps).

5. Archaeological History of the Area

The examination of heritage databases, historical data and cartographic resources represents a critical additional tool for locating and identifying heritage resources and in determining the historical and cultural context of the study area. Therefore an internet literature search was conducted and relevant archaeological and historical texts were also consulted. Relevant topographic maps and satellite imagery were studied. Researching the SAHRA APM Report Mapping Project records and the SAHRIS online database (<http://www.sahra.org.za/sahris>), it was determined no previous archaeological studies had been carried out in the study area. However, a number of previous archaeological or historical studies had been performed within the wider vicinity of the study area.

Previous Studies

Previous studies listed for the area in the APM Report Mapping Project included a large number of surveys within Quarter Degree Squares 2427CD, 2427CC, 2427DA, 2427DC, 2527AB and 2427CB:

- Van Schalkwyk, J.A. 1994. **A Survey of Archaeological and Cultural Historical Resources in the Amandelbult Mining Lease Area.** An unpublished report by the National Cultural History Museum on file at SAHRA as: 1994-SAHRA-0024.

- Van Schalkwyk, J.A. 2003. **Arch Survey Mantserre-Kraalhoek-Mopyane Water Scheme, NW Province.** An unpublished report by the National Cultural History Museum on file at SAHRA as: 2003-SAHRA-0026.
- Van Schalkwyk, J.A., Teichert, F., & Pelsler, A.J. 2003. **A Survey of Archaeological Sites for the Amandelbult Platinum Mine Seismic Exploration Program.** An unpublished report by the National Cultural History Museum on file at SAHRA as: 2003-SAHRA-0086.
- Küsel, U. 2003. **Cultural Heritage Resources Scoping Report Proposed Private Resort (Kwaggasvlakte 317 KQ Portion 32).** An unpublished report by African Heritage Consultants CC on file at SAHRA as: 2003-SAHRA-0149.
- Gaigher, S. 2006. **Heritage Impact Assessment for the Proposed Wildlife Estate on the Farm Grootfontein 352 KQ, Limpopo Province.** An unpublished report by Archaeo-Info on file at SAHRA as: 2006-SAHRA-0262.
- Roodt, F. 2006. **Heritage Resources Scoping Report: Nooitgedacht Open Cast Mine on the Farm Nooitgedacht 22 JQ Northam: Thabazimbi Municipality.** An unpublished report by R & R Cultural Resource Consultants on file at SAHRA as: 2006-SAHRA-0280.
- Van Schalkwyk, J.A., 2007a. **Survey of Heritage Resources in the Location of the Proposed Merensky Mining Project, Amandelbult Section, Rustenburg Platinum, Limpopo Province.** An unpublished report by the National Cultural History Museum on file at SAHRA as: 2007-SAHRA-0028.
- Fourie, W. 2007. **Heritage Impact Assessment on Portion 3 of the Farm Rooiberg 604 KQ, the Remainder of the Farm Olievenbosch 506 KQ, and the Farm Blancheberg 626 KQ, Limpopo Province.** An unpublished report by Matakoma Heritage Consultants (Pty) Ltd on file at SAHRA as: 2007-SAHRA-0031
- Pistorius, J.C.C. 2007. **A Phase 1 Heritage Impact Assessment (HIA) Study for Eskom's Proposed New 400 kV Power Line Route Between the Matimba B Power Station and the Marang Substation near Rustenburg.** An unpublished report by Archaeologist and Cultural Heritage Management Consultants on file at SAHRA as: 2007-SAHRA-0048.
- Roodt, F. 2007. **Phase 1 Heritage Resources Impact Assessment (Scoping & Evaluation) Rhebokloof Wild Life Estate Thabazimbi, Limpopo.** An unpublished report by R & R Cultural Resource Consultants on file at SAHRA as: 2007-SAHRA-0072.
- Fourie, W. & van der Walt, J. 2007. **Sunbird Heritage Impact Assessment Proposed Estate Development on Portions of the Farm Doornhoek 318 KQ,**

Thabazimbi, Limpopo Province. An unpublished report by Matakoma Heritage Consultants (Pty) Ltd on file at SAHRA as: 2007-SAHRA-0302.

- Küsel, U. 2007a. **Cultural Heritage Resources Impact Assessment of the Farm Hardekoolbult 548 KQ in the Thabazimbi Municipal Area, Limpopo Province.** An unpublished report by African Heritage Consultants CC on file at SAHRA as: 2007-SAHRA-0337.
- Küsel, U. 2007b. **Cultural Heritage Resources Impact Assessment of Hanover 341 KQ in the Thabazimbi Area Limpopo Province.** An unpublished report by African Heritage Consultants CC on file at SAHRA as: 2007-SAHRA-0338.
- Van Schalkwyk, J.A. 2007b. **Heritage Impact Assessment: Portion 6 Aapieskraal.** An unpublished report by the National Cultural History Museum on file at SAHRA as: 2007-SAHRA-0386.
- Maguire, J.M. & van Wyk, C. 2008. **Phase 1 Archaeological Impact Assessment for Portion 128 of the Farm Koedoesdoorns KQ 414, Northam, Limpopo Province.** An unpublished report by Adansonia Heritage Consultants on file at SAHRA as: 2008-SAHRA-0293.
- Küsel, U. 2008. **Cultural Heritage Resources Impact Assessment for Portions 1, 4, 5, 6, 7, 18, 19, 27 and 28 of the Farm Maroeloesfontein 366 KQ, Limpopo Province.** An unpublished report by African Heritage Consultants CC on file at SAHRA as: 2008-SAHRA-0369.

Researching the SAHRIS online database (<http://www.sahra.org.za/sahris>) further studies were identified in the wider vicinity of the study area:

- Allison, H. 2012. **Pilanesberg Platinum Mines Proposed Tuschenkomst Pit Extension. Scoping Report.** An unpublished report by SLR consulting. SAHRIS case number 845.
- Fourie, W. 2012. **Kumba Iron Ore Thabazimbi Mine Mostert Tunnel Level Cave (MTC) Wachteenbietjesdraai 350 KQ and Kwaggashoek 345 KQ. Heritage Impact Report on proposed mining activities of project Phoenix.** An unpublished report by Professional Grave Solutions .SAHRIS case number 548.
- Kruger N. 2012. **Phase 1 Archaeological Impact Assessment Report. Atla Mining Resources (pty) Ltd.: Mine on Rooderand portion 2, Bojanala Municipality, Northwest Province.** An unpublished report by Africa Geo-Environmental Services. SAHRIS case number 357.
- Shippon, J. et al. 2012. **Dishaba Mine Backfill Project Draft Scoping Report.** An unpublished report by Prime Resources Environmental Consultants. SAHRIS case number 579.

- Thathong Development Consulting, no date. **Environmental Management Plan.** An unpublished report by Thathong Development Consulting. SAHRIS case number 725.
- Van Schalkwyk, J. 2012. **Heritage Impact Assessment for the Proposed New Developments at the SAPS Verdrag Training Centre, Thabazimbi Region, Limpopo Province.** An unpublished report for Interdesign Landscape Architects. SAHRIS case number 465.

Van Schalkwyk et al. (2003) carried out an extensive survey of heritage resources in the Amandelbult platinum mining area a few kilometres to the north and west of the current study area and a large number of sites dating to the Late Iron Age were identified. All of these were stone walled sites with large deposits containing ash, faunal remains, potsherds and other cultural remains and located in areas close to the hills or on outcrops. The latter provided a source of stone for building the walls and were obviously preferable than the often flooded ‘turf’ closer to the Crocodile River. These sites were related to Tswana habitation from the late 17th Century to the late 19th Century (Van Schalkwyk et al. 2003). Van Schalkwyk (2007a) carried out a subsequent survey of this mining area. This survey identified a considerable number of heritage resources including a considerable number of MSA and LSA sites and artefacts and noted that MSA lithics were often encountered singly and in open areas near watercourses while LSA lithics were rather found in accumulations on rocky outcrops. The survey also located a number of Iron Age sites, most belonging to the Late Iron Age but two possibly belonging to the early Iron Age and recommended that sites be protected from development as that from an archaeological perspective the area is highly sensitive (Van Schalkwyk 2007a). Van Schalkwyk (2007b) carried out a Heritage Impact on Apieskraal 376 KQ which recommended that the proposed development could go ahead from a heritage point of view as the HIA found no features, sites or artefacts of cultural significance and stated that the flat terrain, without landscape features such as rocky hills, coupled with the fact that the study area is within the floodplain of the Crocodile River, made the locality highly unsuitable for settlement (Van Schalkwyk, 2007b) compared to the areas to the north and west.

The other studies listed for the area also located a number of heritage sites. Some 30 km to the north-west of the study area, Middle Stone Age and Late Stone Age artefacts were described as being well represented as well as a large number of Late Iron Age sites of the Kwenabaphalane, some settled as late as the 1820s, and a number of possible Early Iron Age sites (Van Schalkwyk 1994; Shippon, J. et al. 2012). To the south-east of the study area further indications of Early and Middle Stone Age occupation in the form of flakes were found although no important sites were identified (Küsel 2007a). North of Pilanesberg and to the west of the study area surface occurrences of stone tools and lithics, dating mostly to the Middle Stone Age, were identified as well as an early (1500 AD) Sotho-Tswana Iron Age settlement, possible 17th Century Iron Age stone walling and an Iron Age smelting site lacking any clear temporal markers (Kruger 2012). In the vicinity of Thabazimbi the Mostert Tunnel Cave contains speleothems that would qualify

as rare geological specimens under the National Heritage Resources Act (Fourie 2012). Many studies reported no indications of Stone or Iron Age heritage sites or artefacts (Van Schalkwyk 2003; Gaigher 2006; Roodt 2007; Küsel 2007b; Van Schalkwyk 2007a; Küsel 2008; Thathong Development Consulting no date) although a number mention large numbers of graves and historical heritage resources including farmsteads. Some reports were incomplete copies or not located on the SAHRA & SAHRIS databases (e.g. Roodt 2006; Maguire & van Wyk 2008).

Archaeological & Historical Sequence

The historical background and timeframe of the study area and other areas in Southern Africa can be divided into the Stone Age, Iron Age and Historical period. These can be divided as follows:

Stone Age sites

The Stone Age is divided into the Early, Middle and Late Stone Age. The *Early Stone Age* (ESA) includes the period from 2.5 million years B.P. to 250 000 years B.P. and is associated with Australopithecines and early *Homo* species who practiced stone tool industries such as the Oldowan and Acheullian. The *Middle Stone Age* (MSA) covers various tool industries, for example the Howiesons Poort industry, in the period from 250 000 years B.P. to 25 000 years B.P. and is associated with archaic and modern *Homo sapiens*. The *Late Stone Age* (LSA) incorporates the period from 25 000 years B.P. up to the Iron Age and Historical Periods and contact between hunter-gatherers and Iron Age farmers or European colonists. This period is associated with modern humans and characterised by lithic tool industries such as Smithfield and Robberg.

Although no ESA sites were recorded within Marakele National Park (Birkholtz & Steyn 2002), excavations at several well known sites in the region attest to ESA occupation. Makapansgat provided evidence of long occupation, initially by *Australopithecus africanus* from approximately 3.3 million years B.P. (Bergh 1999) while the Olieboompoort shelter indicated the presence of ESA people from between 1 million to 400 000 years B.P. (Birkholtz & Steyn 2002). A number of MSA sites are known from Marakele as well as the wider region including an MSA layer in the Olieboompoort Shelter dated to 33 000 year B.P. (Mason 1962) and MSA sites at New Belgium 608 LR, Schurfpoot 112 KR and Goergap 113 KR (Birkholtz & Steyn 2002).

Interestingly, research on the LSA in the Waterberg Plateau suggests a discontinuity between MSA and LSA settlement of several thousand years, with settlement of the area by LSA hunter gatherers occurring in the 11th and 12th Centuries and coinciding with settlement by Iron Age peoples (van der Ryst 1998). While the relationship between stone-age people and Iron Age settlers was initially characterised by peaceful interaction and trade, the relationship seems to have degraded into one of subjugation of the former, exacerbated by increasing numbers of white settlers. The farm Vaalpensspan 90 KQ located some distance to the north of the study area is a reminder of the marginalised remnants of the hunter gatherers, 'Vaalpense' being the name given to people of mixed Bantu and hunter gatherer descent (van der Ryst 1998; Birkholtz & Steyn 2002). In Southern Africa the Late Stone Age is characterised by the appearance of rock art in the

form of paintings and engravings and the Waterberg is known for its many rock art sites including those containing shaded paintings such as at Haakdoorndraai (Pager, 1973) and the depiction of a fat tailed sheep at Dwaalhoek 185 KQ (van der Ryst 1998).

Iron Age

The Iron Age incorporates the arrival and settlement of Bantu speaking people and overlaps the Pre-Historic and Historical Periods. It can be divided into three phases. The *Early Iron Age* includes the majority of the first millennium A.D. and is characterised by traditions such as Happy Rest and Silver Leaves. The *Middle Iron Age* spans the 10th to the 13th Centuries A.D. and includes such well known cultures as those at K2 and Mapungubwe. The *Late Iron Age* is taken to stretch from the 14th Century up to the colonial period and includes traditions such as Icon and Letaba.

The earliest Iron Age site in the region lies some 150 km to the north-east of the study area at Ongelukskraal 48 KR, dated to 140 A.D. and is associated with the Bambata ceramic typology (van der Ryst 1998). Research on the Waterberg Plateau and within the Motlhabatsi (Matlabas) River valley to the north of the study area and in the Rooiberg area to the west has indicated three phases of Early Iron Age settlement. The first phase is characterised by ceramics of the Western Stream similar to those from Happy Rest and Klein Africa and dated to Circa 570 A.D. (Huffman 1990; van der Ryst 1998). The second phase, circa 700 A.D., is similar to the Rooiberg Unit 1 (Hall 1981; Huffman 1990) ceramics described from a site to the north-east of the study area and the third phase, circa 1000 A.D. is associated with the Eiland tradition, marking the end of the Early Iron Age in the area (Huffman 1990). The site at Diamant on the western edge of the Waterberg has yielded Middle Iron Age imported glass beads like those excavated at Schroda on the Limpopo, the latter being the likely centre of distribution for this early trade (Huffman 2007).

Several Sotho-Tswana communities settled in the North-west Province, Gauteng, Limpopo Province and in Botswana during the 14th and 15th centuries. These communities spread over the region as several lineages developed under their separate leaders. One of these lineages was the Bahurutshe-Bakwena which divided into the Bakwena, Bahurutshe and Bakgatla chiefdoms. The Bakgatla settled at first in the Hammanskraal area during the 17th century. Over the years and after several succession disputes, the divided and separated Bakgatla tribes settled in a much wider region. This region extended to the north of Pretoria up to Nylstroom and further to the north-west to the Marico River (Pistorius, 1992; Bergh, 1999; Huffman, 2007). Later Iron Age presence in the region was associated with the arrival in the area of the Northern Ndebele in the 16th and 17th Centuries with characteristic hilltop settlements (van der Ryst 1998). It must be noted that the influx of Ndebele people was not to uninhabited country given the established Kwena and Kgatla groups of Sotho-Tswana lineage, Kgatla people still predominating in the study area today (Hall 1981; Birkholtz & Steyn 2002).

Pistorius mentioned the occurrence of damaged stone walled sites and a graveyard along the base of Sefikile hill at Sefikile village approximately 40 km to the south-west of the

study area where Phetso of the Kgatla Kgafela had his settlement (Pistorius 2012). There is quite some evidence, in the form of defensive hilltop settlement and aggregation that the Late Iron Age in the region was a time of upheaval and conflict, initially as a result of the influx of the Ndebele and later by European settlers (Hall 1985). The Difaqane period saw Mzilikazi settling in the Marico River valley in the 1830's, unsettling many people who fled east to seek refuge (Huffman 1990) where the Kransberg were known as 'Marakeli' or 'place of refuge' (Coetzee undated) or fled south as did the Bakgatla Chief Kgamanyane who settled at Saulspoort south-west of the study area. According to Breutz (1953) the Kwena baPhalane lived on the western bank of the Crocodile river possibly on the farms Haakdoorndrift 374 KQ and Buffelshoek 351 KQ (a few kilometres north west of the current study area) while the Kgatla бага Kgafela were settled on the farm Schilpadnest 385 KO where they were attacked by Mzilikazi in about 1828 and fled, returning years later (Breutz 1953; Van Schalkwyk 2007). Since 1995, an ongoing archaeological survey has been conducted in the Pilanesberg National Park 80 km to the south-west of the study area which has documented Late Iron Age archaeological sites within a temporal and spatial framework, for example indicating Moloko settlement between AD 1300 and AD 1600 (L'abbé et al. 2008).

Historical Period

The beginning of the Historical Period overlaps the demise of the late Stone and Iron Ages and is characterised by the first written accounts of the region from 1600 A.D. A number of early European travellers visited the area from the early 19th Century onwards including Cowan & Donovan in 1808, David Hume in 1825, Cornwallis Harris in 1836, Livingstone in 1847 and Carl Mauch in 1869 (Birkholtz & Steyn 2002). Carl Mauch described how he found himself at the base of the "Marikele Point...a mighty mountain mass with its three peaks" (Burke 1969).

The first settlers in the area and up to the Waterberg established themselves in the late 1830's and initially sustained themselves through hunting, particularly of elephant, before the emergence of cattle farming and later, agriculture (Pont 1965; Naudé 1998). Early settler towns included Nylstroom, now renamed Modimolle, to the north-east which was established in 1865 and the Waterberg District was declared in 1866. The outbreak of the Boer War in 1899 had a considerable impact on the region with many Boer homesteads abandoned or destroyed as part of the British scorched earth policy and many women and children interned in concentration camps, one located in then-Nylstroom. Black involvement in the war in the region was significant with the Kgatla under Linchwe 1 taking the side of the British and becoming actively involved in the fighting (Birkholtz & Steyn 2002).

The discovery of iron ore deposits at Thabazimbi to the north and the Merensky Reef with platinum and chrome deposits at Rustenburg in the south during the 1920's introduced the region to mining activities. These mining activities, some immediately adjacent to the study area, continued to grow and expand up to what we see today (Bergh, 1999).

6. Methodology

Physical Survey

The extent of the proposed development sites were determined as well as the extent of the areas to be affected by secondary activities (access route, construction camp, etc.) during the development.

The physical survey was conducted on foot over the entire area proposed for development. Priority was placed on the undisturbed areas. A systematic inspection of the area on foot along linear transects resulted in the maximum coverage of the proposed area. The author and an experienced field worker, who did not have a GPS device with him, transected the study area in parallel transects of approximately 25m - 40m between them. The field work was conducted on February 06, 2013 and most of the day was spent on the survey, which was performed by M. Hutten and field worker T. Mulaudzi. The survey focused on the indicated study area as provided by the developer where the proposed development will be situated. Areas outside of the indicated study area were not surveyed.

No sampling was done as no sites or finds of heritage significance were found.

Interviews

The manager of the farm was questioned during the survey and he indicated that he was not aware of any sites of heritage value or significance (such as graves) in the proposed area.

Restrictions

Vegetation proved the major restriction in accessibility to some of the areas and also contributed to poor surface visibility after the spate of recent good rains.

Documentation

All sites/findspots if any located during the foot surveys were briefly documented. The documentation included digital photographs and descriptions as to the nature and condition of the site and recovered materials. The sites/findspots were plotted using a Global Positioning System (GPS) (Garmin GPSmap 60CSx) and numbered accordingly.

7. Assessment Criteria

This chapter describes the evaluation criteria used for determining the significance of archaeological and heritage sites. The significance of archaeological and heritage sites were based on the following criteria:

- The unique nature of a site
- The amount/depth of the archaeological deposit and the range of features (stone walls, activity areas etc.)
- The wider historic, archaeological and geographic context of the site
- The preservation condition and integrity of the site
- The potential to answer present research questions.

Site Significance

Site significance classification standards prescribed by the South African Heritage Resources Agency (2006) and approved by the Association for Southern African Professional Archaeologists (ASAPA) for the Southern African Development Community (SADC) region, were used for the purpose of this report.

<i>FIELD RATING</i>	<i>GRADE</i>	<i>SIGNIFICANCE</i>	<i>RECOMMENDED MITIGATION</i>
National Significance (NS)	Grade 1	-	Conservation; National Site nomination
Provincial Significance (PS)	Grade 2	-	Conservation; Provincial Site nomination
Local Significance (LS)	Grade 3A	High Significance	Conservation; Mitigation not advised
Local Significance (LS)	Grade 3B	High Significance	Mitigation (Part of site should be retained)
Generally Protected (GP.A)	Grade 4A	High / Medium Significance	Mitigation before destruction
Generally Protected (GP.B)	Grade 4B	Medium Significance	Recording before destruction
Generally Protected (GP.C)	Grade 4C	Low Significance	Destruction

Impact Rating:**Low or No Significance:**

The constraint is absent, but in instances where present, poses a negligible significance on the proposed development in terms of heritage concerns.

Moderate Significance:

The constraint is present and poses a notable but not major significance on the proposed development in terms of heritage concerns. If the constraint can not be avoided, appropriate mitigation measures must be implemented to minimize the significance.

High Significance:

The constraint is present and poses a high significance on the proposed development in terms of heritage concerns. It is recommended that the constraint be avoided or appropriate mitigation measures must be implemented to minimize the significance.

Certainty

DEFINITE: More than 90% sure of a particular fact. Substantial supportive data exist to verify the assessment.

PROBABLE: Over 70% sure of a particular fact, or of the likelihood of an impact occurring.

POSSIBLE: Only over 40% sure of a particular fact, or of the likelihood of an impact occurring.

UNSURE: Less than 40% sure of a particular fact, or of the likelihood of an impact occurring.

Duration

SHORT TERM: 0 – 5 years

MEDIUM: 6 – 20 years

LONG TERM: more than 20 years

DEMOLISHED: site will be demolished or is already demolished

Mitigation

Management actions and recommended mitigation, which will result in a reduction in the impact on the sites, will be classified as follows:

- **A** – No further action necessary
- **B** – Mapping of the site and controlled sampling required
- **C** – Preserve site, or extensive data collection and mapping required; and
- **D** – Preserve site

8. Assessment of Sites and Finds

This section will contain the results of the heritage site/find assessment.

Grootkuil Agricultural Development

Site GK 001:

GPS: 24,75550° S
27,42500° E

A farmstead with its associated buildings was identified at this location (photo 7). The main house and other buildings were still intact and were recently renovated to be occupied soon. The main house measured approximately 20m x 20m and had a pitched corrugated iron roof. A kitchen and more rooms were added later to the side of the building. The original building had thick brick-built external walls which were plastered and painted. The house had metal door- and window frames. It also had external electricity and water systems on the older parts of the building and internal electricity and water systems on the later additional parts of the building.

The house will not be affected by the proposed development.

After intensive investigations across the rest of the study areas, no other sites or finds of any heritage value or potential were identified.

Field Rating:	Generally Protected C. Grade 4C
Heritage Significance:	Low
Impact:	Low
Certainty:	Possible
Duration:	Short term
Mitigation:	A – No further action necessary

9. Conclusion and Recommendations

The following steps and measures are recommended regarding the investigated area:

Grootkuil Agricultural Development

Two areas were earmarked for the proposed agricultural development. The first area was approximately 30ha in size and the second area was approximately 15ha in size. Both these showed signs of previous agricultural activities on large parts of the proposed sites.

Site GK 001:

An old house was identified at the second area. This house was recently renovated and will be occupied soon. The house was near the proposed development, but will not be affected by the development. The following is therefore recommended:

- No further heritage mitigation measures are recommended for the historical house as it will not be affected by the proposed development.

Van Schalkwyk (2007b) carried out a Heritage Impact on Apieskraal 376 KQ which recommended that the proposed development could go ahead from a heritage point of view as the HIA found no features, sites or artefacts of cultural significance and stated that the flat terrain, without landscape features such as rocky hills, coupled with the fact that the study area is within the floodplain of the Crocodile River, made the locality highly unsuitable for settlement (Van Schalkwyk, 2007b) compared to the areas to the north and west.

This deduction will also apply to the two study areas include in this report. As for the rest of the two proposed sites, the following is recommended:

- No site-specific actions or any further heritage mitigation measures are recommended for the rest of the study areas as no other heritage resource sites or finds of any value or significance were identified in the indicated study areas.
- The proposed agricultural development on the Remainder Portion and Portions 2 & 10 of the Farm Grootkuil 376 KQ at the indicated areas can continue from a heritage point of view.

10. References

- Bergh, J.S. 1999. Geskiedenisatlas van Suid-Afrika. Die vier Noordelike Provinsies. Pretoria: J.L. van Schaik.
- Birkholtz, P.D. & Steyn, H.S. 2002 Cultural Resource management Plan for Marakele National Park. Produced for SANParks, Report: SANP – MNP - 2002-05-17/Final Report. Helio Alliance.
- Breutz, P.L., 1953. The tribes of Rustenburg and Pilansberg, Department of Native Affairs: Ethnological Publications No. 28. Pretoria: Government Printer.
- Burke, E.E., (Ed.) 1969. The Journals of Carl Mauch: His Travels in the Transvaal and Rhodesia 1869-1872. National Archives of Rhodesia. Salisbury.
- Coetzee, T.A., undated. Thabazimbi: Gister en Vandag. Pretoria Drukkers, Pretoria.
- Hall, S.L. 1981 Iron Age sequence and settlement in the Rooiberg, Thabazimbi Area. M.A. Thesis, University of the Witwaterstrand.
- Hall, S. L., 1985. Archaeological Indicators of Stress in the Western Transvaal Region between the Seventeenth and Nineteenth Centuries. In: Hamilton, C., (Ed). The Mfecane Aftermath: Reconstructive Debates in Southern African History. Witwatersrand University Press/University of Natal Press.
- Huffman, T. N., 1990. The Waterberg Research of Jan Aukema. South African Archaeological Bulletin, 45:117-119.
- Huffman, T. N., 2007. Handbook to the Iron Age, The Archaeology of Pre-Colonial Farming Societies in Southern Africa. University of Kwa-Zulu Natal Press.
- L'abbé, E., Coetzee, F.P., & Loots, M. 2008. A description of Iron Age skeletons from the Pilanesberg National Park, South Africa. South African Archaeological Bulletin 63 (187): 28–36.
- Mason, R.J. 1962. Prehistory of the Transvaal. University of the Witwatersrand Press, Johannesburg.
- Naudé, M., 1998. Oral Evidence of Vernacular Buildings and Structures on Farmsteads in the Waterberg (Northern Province). Research by the National Cultural History Museum, 7:47-91.
- Pager, H. 1973. Shaded rock-paintings in the Republic of South Africa, Lesotho, Rhodesia and Botswana. The South African Archaeological Bulletin.

Pistorius, J.C.C. 2012. A Phase 1 Heritage Impact Assessment (HIA) study for chrome mining activities on various portions of the farms Groenfontein 138JP, Vlakfontein 163JP and Vogelstruisnek 174JP west of the Pilanesberg in the North-West Province of South Africa. An unpublished report prepared for Golder Associates Africa (Pty) Ltd.

Pont, A.D., 1965. Die Nededuitsch Hervormde Gemeente Waterberg. Kerkraad van die Nederduitsch Hervormde Gemeente Waterberg. Krugersdorp.

South African Heritage Resources Agency, 2009. Archaeology and Palaeontology Report Mapping Project. DVD Version 1.0. Cape Town.

South African Heritage Resources Information System, <http://www.sahra.org.za/sahris>. Accessed 29th November 2012.

Van der Ryst, M.M., 1998. The Waterberg Plateau in the Northern Province, Republic of South Africa, in the Later Stone Age. BAR International Series 715, Archaeopress, Oxford.

Van Schalkwyk, J.A., 2007. Survey of Heritage Resources in the Location of the Proposed Merensky Mining Project, Amandelbult Section, Rustenburg Platinum, Limpopo Province. An unpublished report by the National Cultural History Museum.

APPENDIX A

Photographs



Photo 1: View of the previously ploughed areas at the first site.



Photo 2: View of the dense vegetation at the first site.



Photo 3: View of the surrounding agricultural activities at the first site.



Photo 4: View of the previously ploughed areas at the second site.



Photo 5: View of the dense vegetation at the second site.



Photo 6: View of the surrounding agricultural activities.

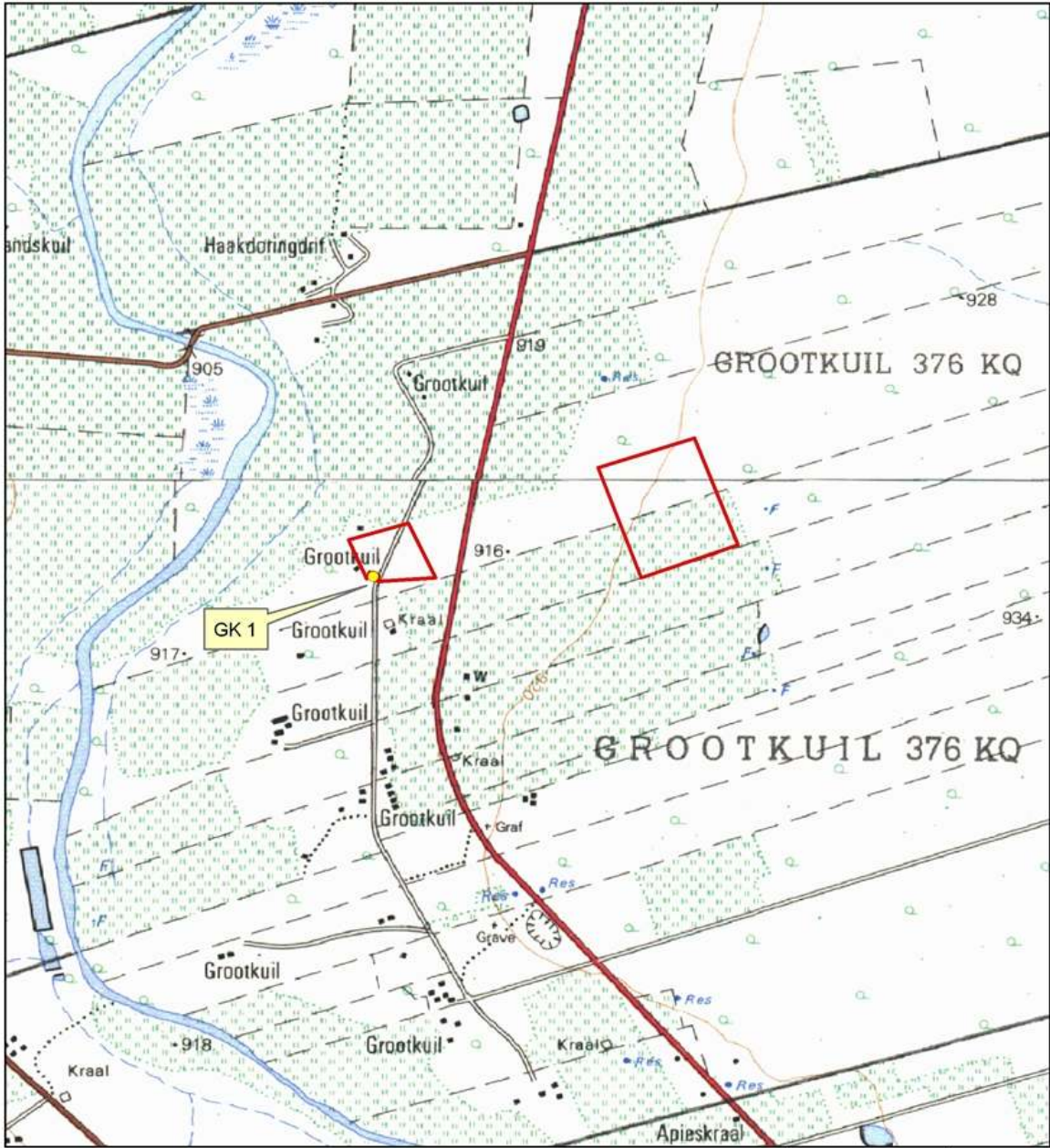


Photo 7: View of the old house identified next to the second site.

APPENDIX B

Location Maps

Grootkuil Agricultural Development



<p>0 1 2 Kilometres</p>	<p>1:30,000</p>	
<ul style="list-style-type: none"> ● Heritage site Study area 	<p>Imagery: WGS2427CB.TIF & WGS2427CD.TIF Source: Chief Directorate: National Geo-spatial Information Datum: WGS84 Study Area: Part of Grootkuil 376 KQ</p>	


Grootkuil Agricultural Development



0 1 2 Kilometres

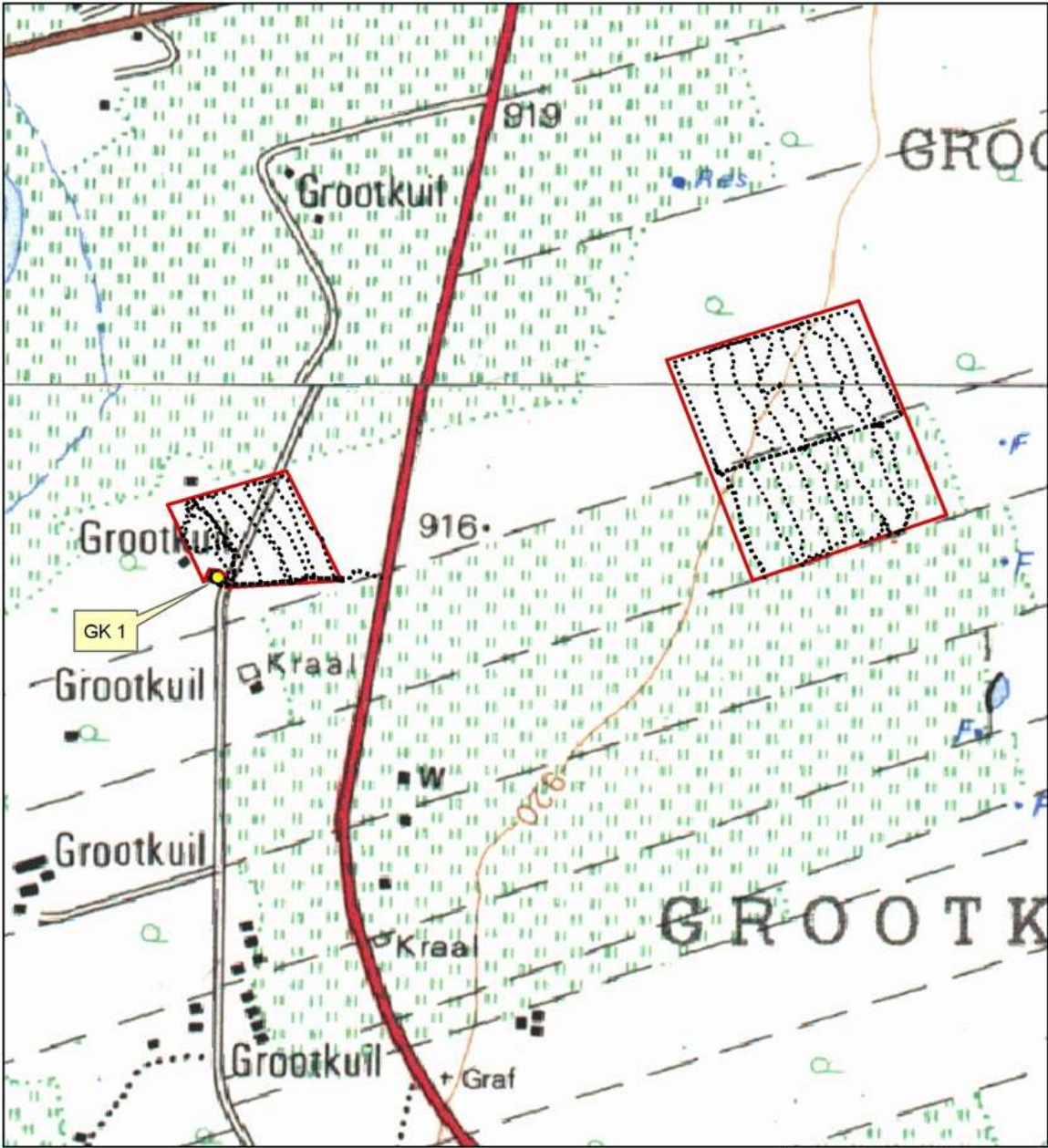
1:30,000



-  Heritage site
-  Apieskraal study area

Imagery: 2427C.jp2
Source: Spot Image/CSIR
Datum: WGS84
Study Area: Part of Grootkuil 376 KQ

Grootkuil Agricultural Development



<ul style="list-style-type: none"> ● Heritage site Study area Track log 	<p>Imagery: WGS2427CB.TIF & WGS2427CD.TIF Source: Chief Directorate: National Geo-spatial Information Datum: WGS84 Study Area: Part of Grootkuil 376 KQ</p>
--	--

Grootkuil Agricultural Development



<p>0 0.5 1 Kilometres</p>	1:15,000	
<ul style="list-style-type: none"> ● Heritage site Apieskraal study area Track log 	Imagery: 2427C.jp2 Source: Spot Image/CSIR Datum: WGS84 Study Area: Part of Grootkuil 376 KQ	