

# Exemption from Phase 1 Palaeontological Impact Assessment: Upgrading of Jan Smuts Avenue between Kent Road and 8<sup>th</sup> Avenue and between Bolton Road and Northwold Drive, Johannesburg, Gauteng Province.

---

## Map Reference:

1:50 000 topographic map 2628 AA Johannesburg

1:250 000 scale geological map 2628 East Rand

## Site Coordinates:

Bolton Road to Northwold Drive: 26° 8'56.38"S 28° 2'4.60"E to 26° 9'29.58"S 28° 2'3.54"E

Kent Road to 8<sup>th</sup> Avenue: 26° 7'59.26"S 28° 2'7.84"E to 26° 8'32.77"S 28° 2'8.63"E

The proposed activity calls for upgrading of sections of Jan Smuts Avenue, including a 1 km-section between Kent Road and 8<sup>th</sup> Avenue and a 3 km- section between Bolton Road and Northwold Drive (**Fig. 1**).

The affected area is primarily underlain by Witwatersrand Supergroup rocks considered to be of no palaeontological significance. The overlying Quaternary component (geologically recent superficial sediments/residual soils) is also regarded as of low palaeontological significance due to the extremely degraded condition of the surface area of the site.

It is recommended that exemption from further palaeontological studies is granted for the proposed project, provided that all construction activities are restricted to within the boundaries of the development footprint. In the unlikely event of fossil discovery within the Quaternary overburden or bedrock sediments during the construction phase of the project, a professional palaeontologist must be called in immediately to confirm and record the finds.

## References

McCarthy, T.S.. 2006. **The Witwatersrand Supergroup** In: Johnson, M.R, Anhaeusser, C.R. and Thomas, R.J. (Eds.) *The geology of South Africa*, pp. 155-186. Geological Society of South Africa. Johannesburg & the Council for Geoscience, Pretoria.

SAHRIS PalaeoSensitivity Map 2017 ( <http://www.sahra.org.za/sahris/map/palaeo>).

## DECLARATION OF INDEPENDENCE

I, Lloyd Rossouw, declare that I act as an independent specialist consultant. I do not have or will not have any financial interest in the undertaking of the activity other than remuneration for work as stipulated in the terms of reference. I have no interest in secondary or downstream developments as a result of the authorization of this project.

A handwritten signature in black ink, appearing to read 'L. Rossouw', written in a cursive style.

Dr. L. Rossouw

PO Box 38806

Langenhovenpark 9330

11/ 10/ 2017



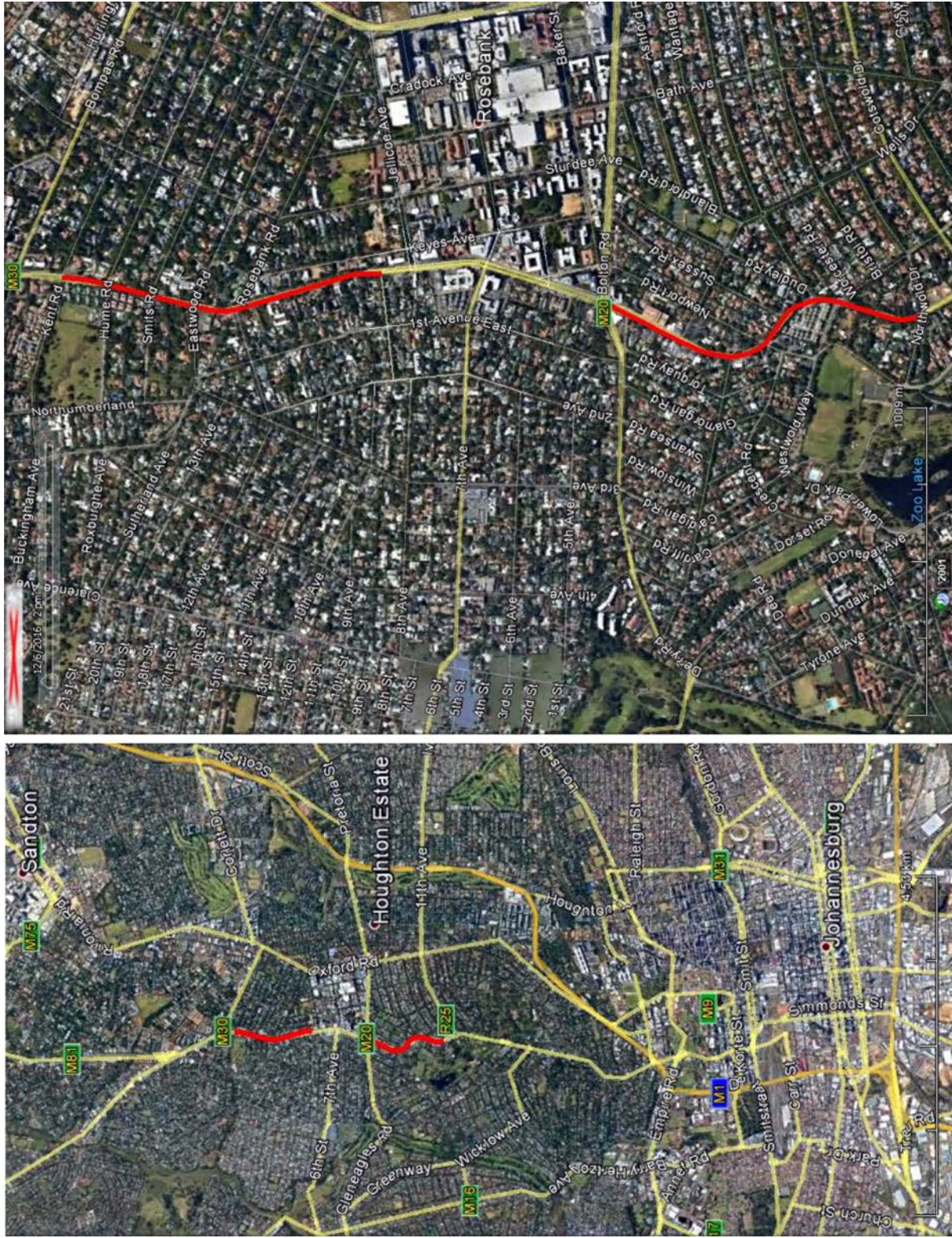


Figure 1. Aerial view of the development footprint (red lines).