

## GRAVESITE 2

*Description:*

This is a labourer cemetery relatively close to the Japies Rus. Mr. Andries Pyl, who is the most senior next-of-kin of the family was interviewed and he indicated that there were at least 14 graves within the fenced area.

GPS S28° 06' 20.47"  
E23° 00' 11.71"

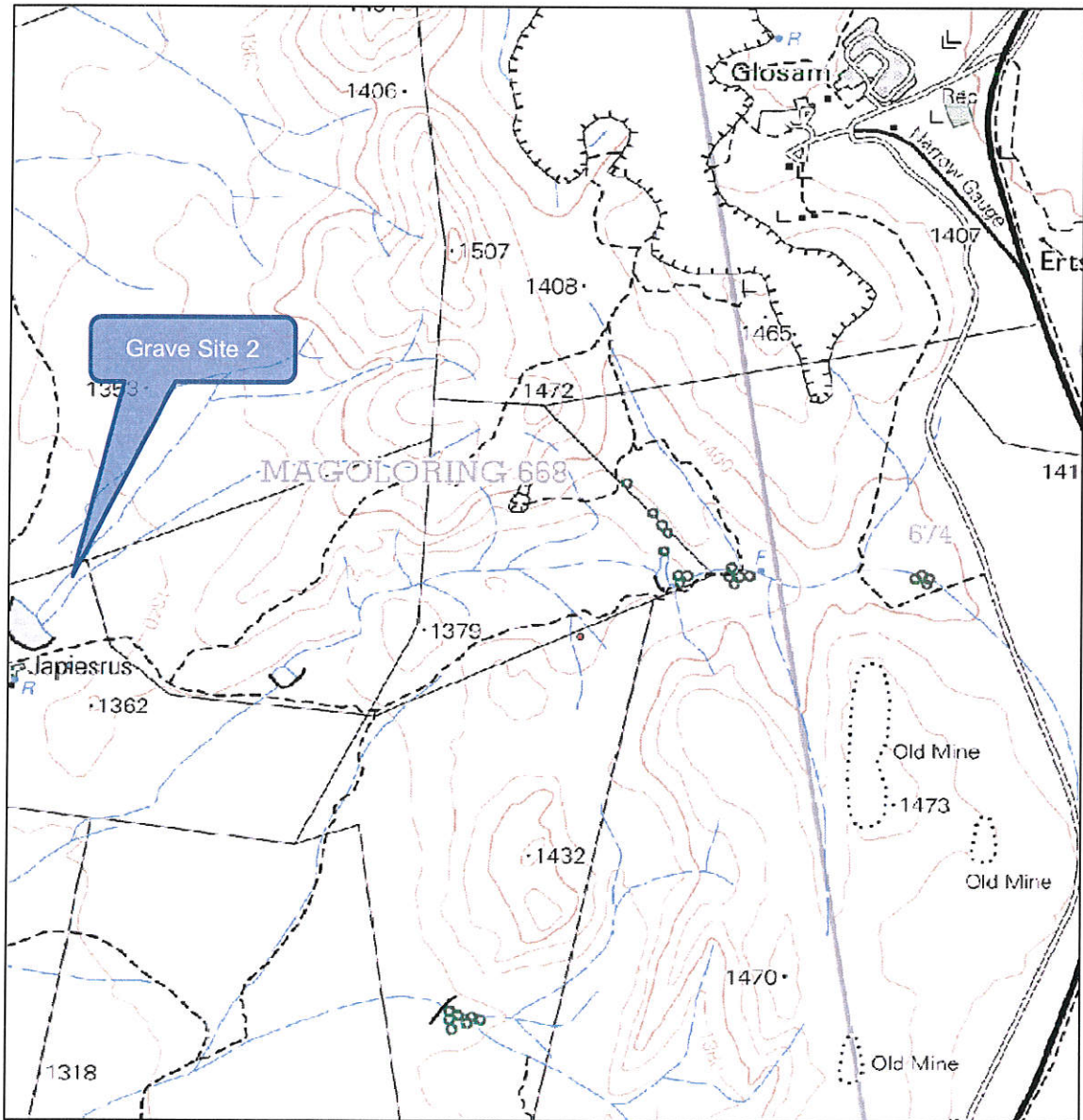


Figure 23. Grave Site 2



Figure 24. Google Earth Image of the Location of Gravesite 2



Figure 25. Gravesite 2



Figure 26. Grave at Gravesite 2



Figure 27. Graves at Gravesite 2



Figure 28. Graves at Gravesite

## KRAAL

*Description:*

A single square stone-walled livestock enclosure is located here. This consists of stones with a drywall build. The walls are up to 2m high in places and is built with mostly sandstone blocks of around 50cm x 50cm.

The enclosures were most likely used to keep cattle, sheep or goats.

GPS S28° 06' 25.06''  
E23° 00' 36.32''

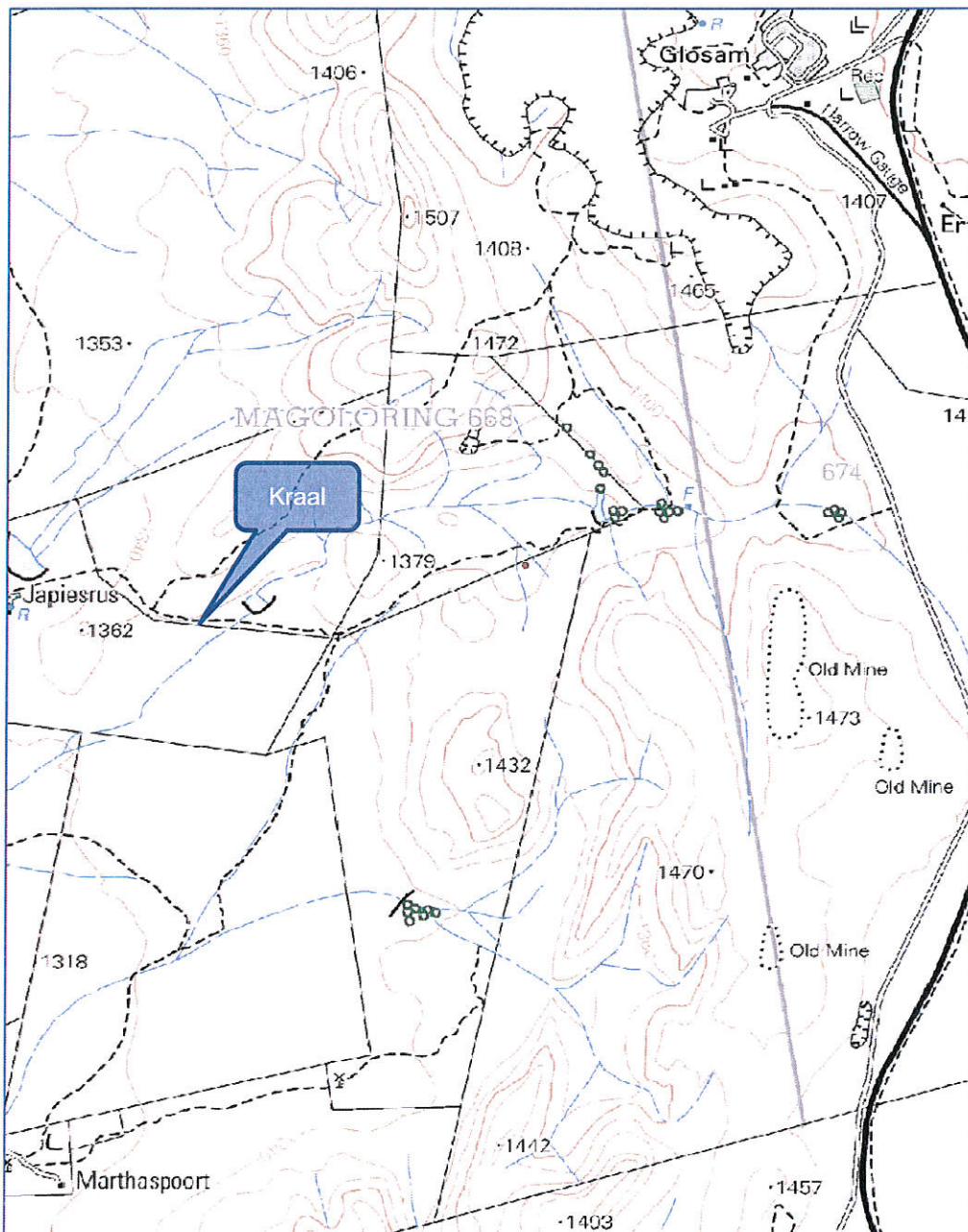


Figure 29. Location of Kraal



Figure 30. Google Earth Image of the Location of the Kraal



Figure 31. Livestock enclosure



Figure 32. Livestock enclosure

## OLD BRIDGE

*Description:*

An old iron plate bridge associated with the mining activities in the 1980's.

GPS S28° 06' 25.06''  
E23° 00' 36.32''



Figure 33. Google Earth Image of the Location of the Old Bridge and Old Mine



Figure 34. Old Bridge



### OLD MINE

GPS S28° 05' 55.29"  
E23° 01' 21.13"

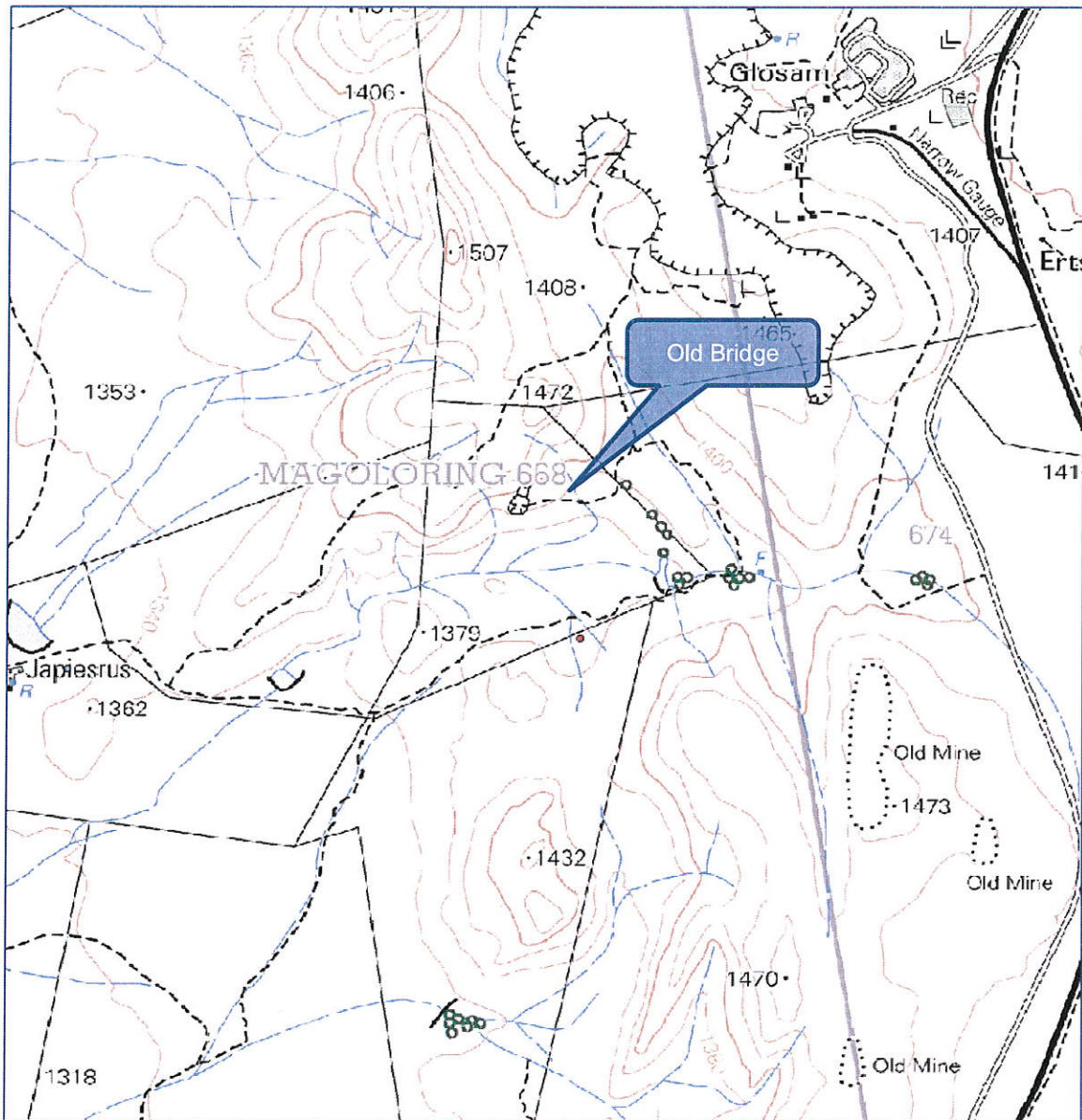


Figure 35. Location of Bridge

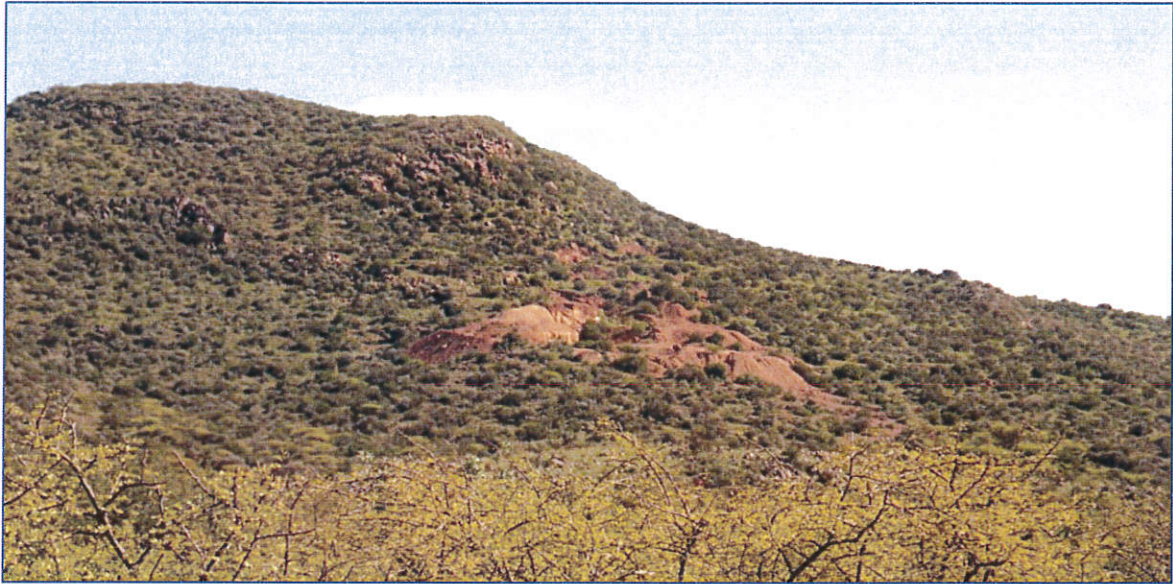


Figure 36. Old Mine



Figure 37. Old Mine

## STONE TOOLS

Scatters of Late Stone Age tools were observed at several sites on the property. None of these scatters defined a stone age site. Although some cores were noticed, very few reworking flakes could be identified. Much of the stone used for these tools are some kind of volcanic glass. There are no known sources of this rock on the property. Most of the other tools recovered were of banded ironstone.

No	Description	Location
1	Microliths and flakes	S28° 06' 34.29'' E23° 00' 15.13''
2	One Microlith	S28° 06' 44.59'' E23° 00' 41.23''
3	Partial blade	S28° 06' 15.39'' E23° 00' 41.83''
4	Microlith	S28° 05' 25.29'' E23° 51' 11.73''
5	Core and some flakes	S28° 06' 35.23'' E23° 00' 21.43''
6	Denticulate	S28° 05' 51.45'' E23° 01' 02.23''
7	Flake	S28° 05' 53.79'' E22° 59' 22.13''
8	4 Flakes	S28° 04' 15.29'' E22° 59' 21.13''
9	2 Flakes	S28° 06' 55.29'' E22° 59' 21.13''
10	1 Core and 2 Flakes	S28° 04' 15.29'' E23° 01' 22.13''
11	Thumbnail scraper	S28° 05' 55.79'' E23° 01' 21.13''
12	Irregular microliths	S28° 04' 56.89'' E23° 59' 29.13''
13	Core	S28° 05' 05.89'' E22° 59' 01.63''
14	Fractured blade	S28° 05' 55.29'' E23° 01' 21.13''
15	Point	S28° 05' 55.29'' E23° 01' 21.13''
16	Reworked core	S28° 04' 35.59'' E22° 59' 51.13''
17	5 Microliths	S28° 04' 35.59'' E22° 59' 55.73''
18	One core and three microliths	S28° 05' 35.69'' E23° 00' 31.56''
19	Point	S28° 04' 55.29'' E23° 00' 51.13''
20	Core	S28° 04' 35.79'' E23° 59' 22.23''
21	Microlith	S28° 05' 15.19'' E23° 00' 51.13''
22	Point	S28° 04' 25.69'' E23° 00' 29.53''
23	Scraper (Possible Thumbnail)	S28° 05' 05.29'' E22° 59' 20.03''

24	Fractured blade	S28° 05' 02.29'' E22° 59' 11.11''
25	Scattered flakes	S28° 04' 59.59'' E23° 00' 11.80''
26	Scraper	S28° 04' 45.39'' E23° 01' 01.83''
27	One core and one thumbnail scraper	S28° 05' 45.89'' E22° 59' 21.00''
28	Seven possible microliths	S28° 04' 25.78'' E23° 01' 00.33''
29	Fractured blade	S28° 05' 03.29'' E23° 01' 51.93''
30	Point	S28° 05' 35.49'' E23° 01' 02.03''
31	One microlith	S28° 05' 59.89'' E23° 01' 51.63''

Table of chance finds at Japies Rust

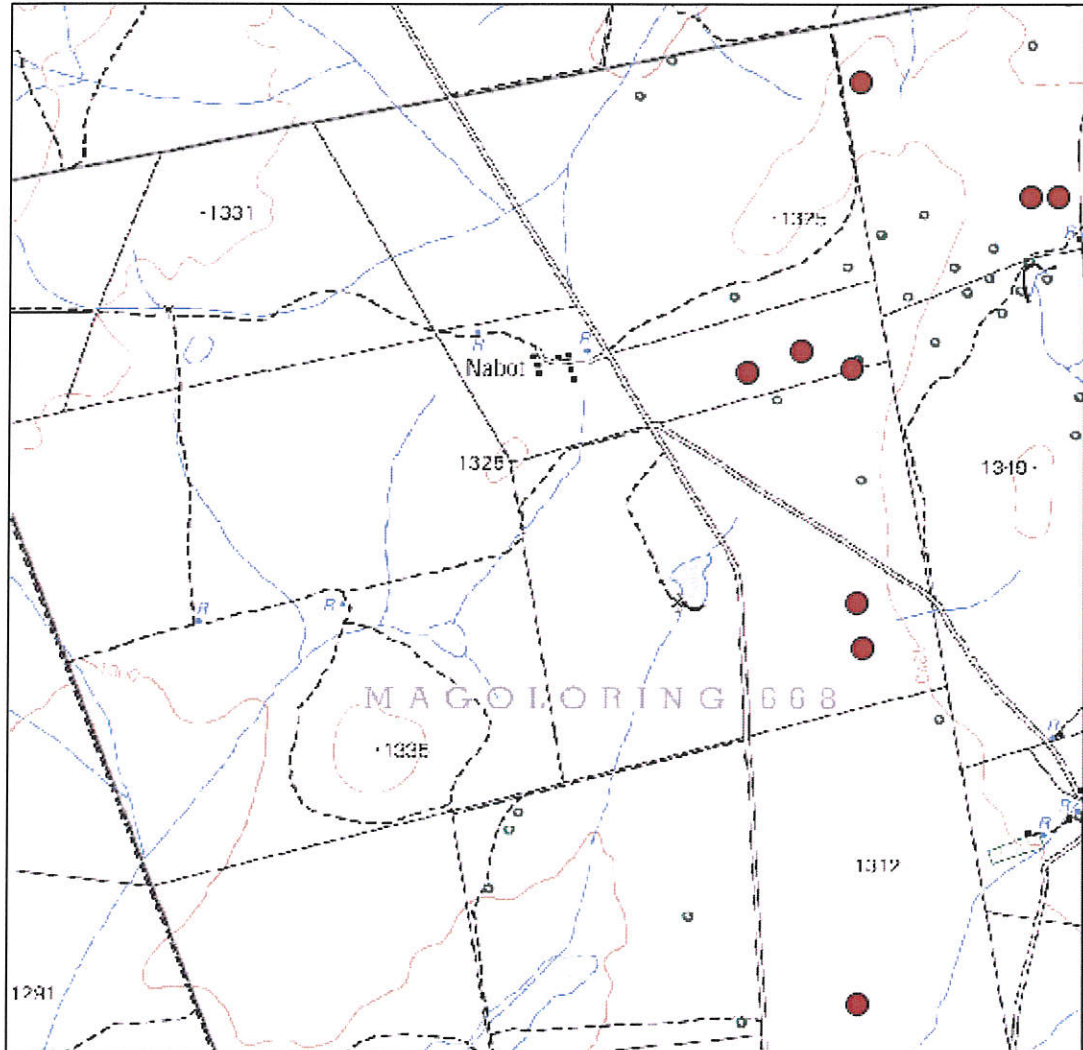


Figure 38. Map locations of Stone Tools

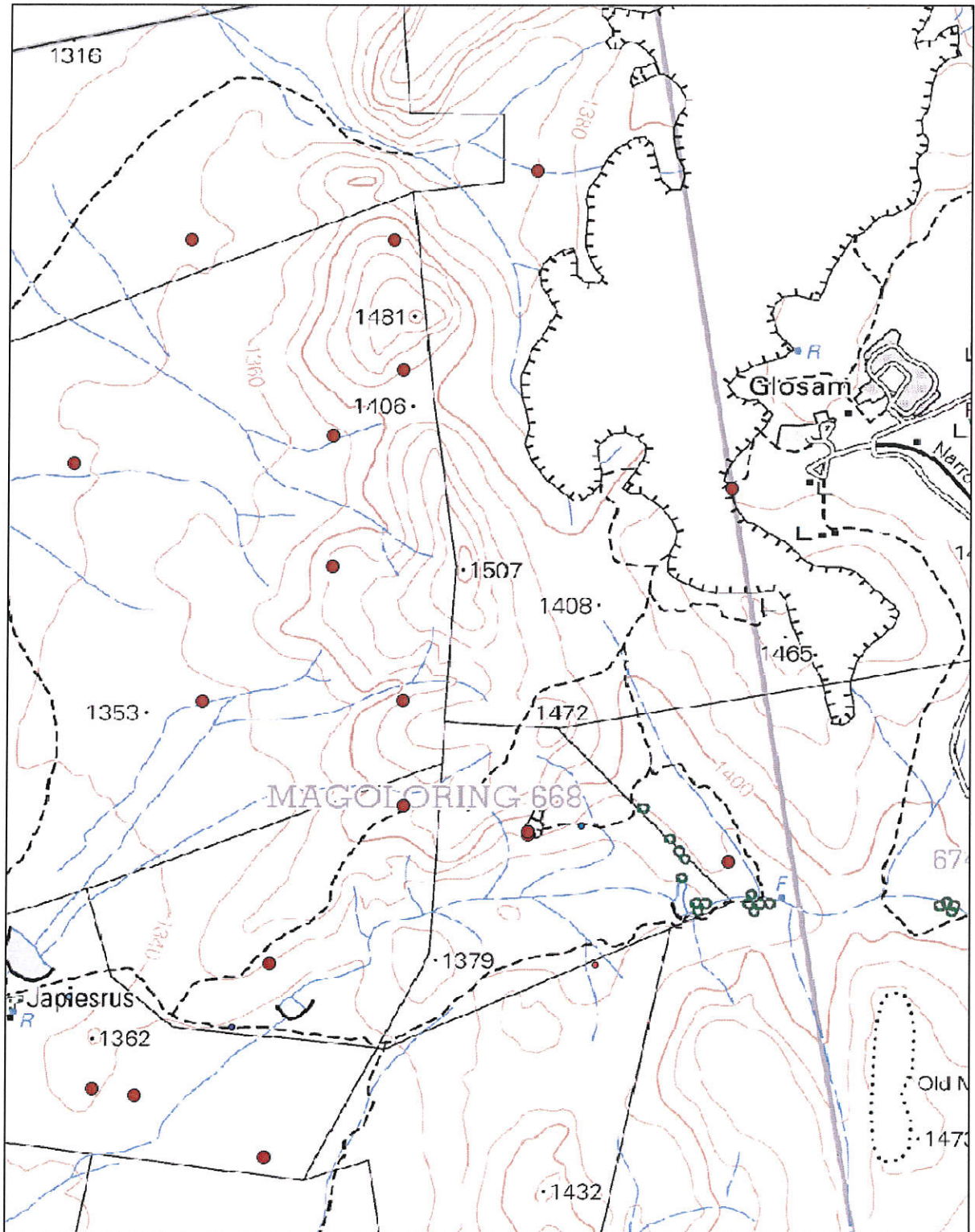


Figure 39. Map locations of Stone Age finds

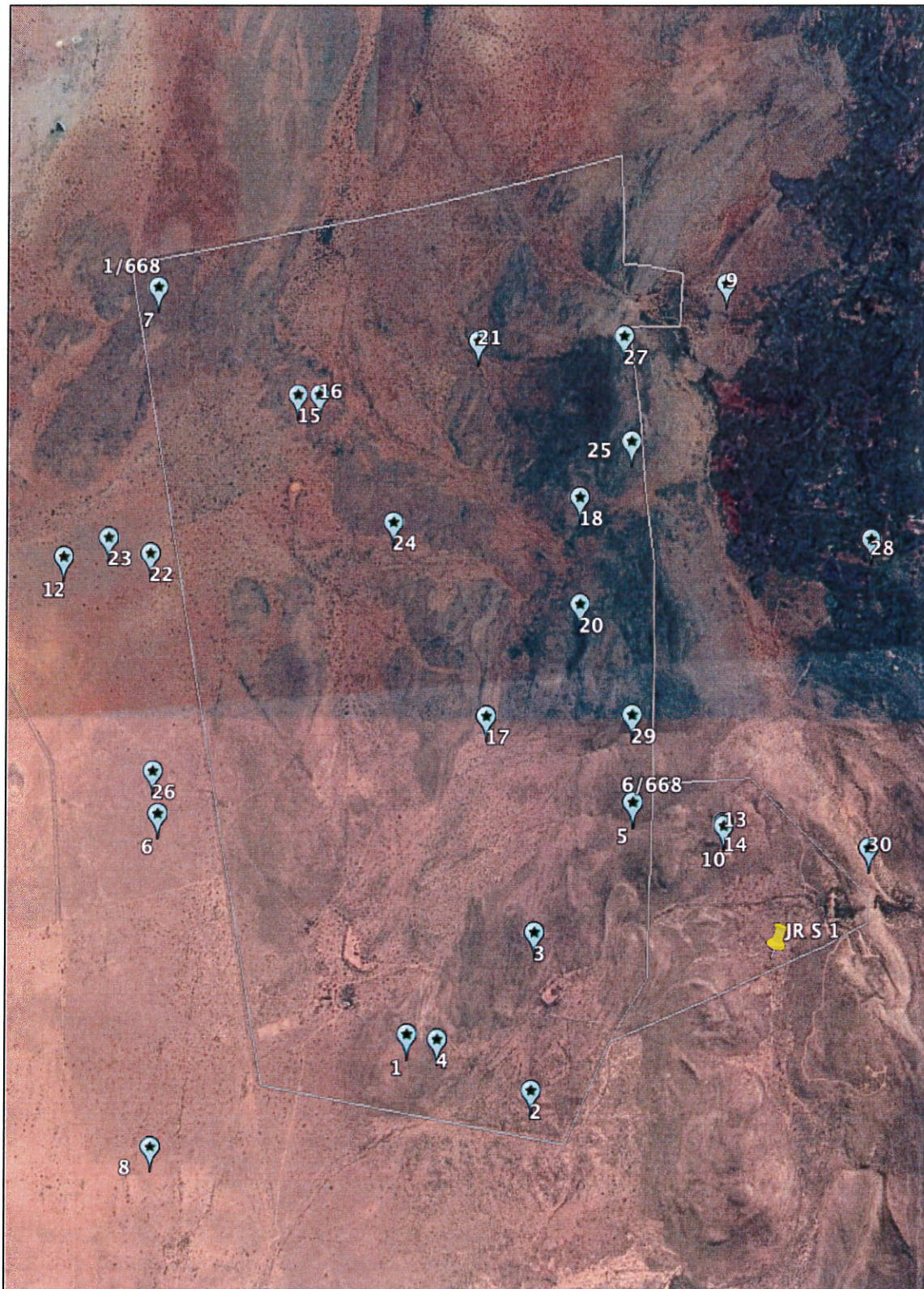


Figure 40. Location of Stone tools



Figure 41. Stone Tools *in situ*



Figure 42. Stone Tools *in situ*



Figure 43. Stone Tool



Figure 44. Stone Tool





Figure 45. Stone Tool



Figure 46. Stone Tool



Figure 47. Stone Tool



Figure 48. Iron Ore