

APPENDIX 4
PHOTOGRAPHIC DOCUMENTATION: KROKODILSPRUIT



Fig. 1: A general view of the farm from east (near the entrance), facing west.



Fig. 2: A general view of the farm from west to east. The entrance road to the property is clearly visible.

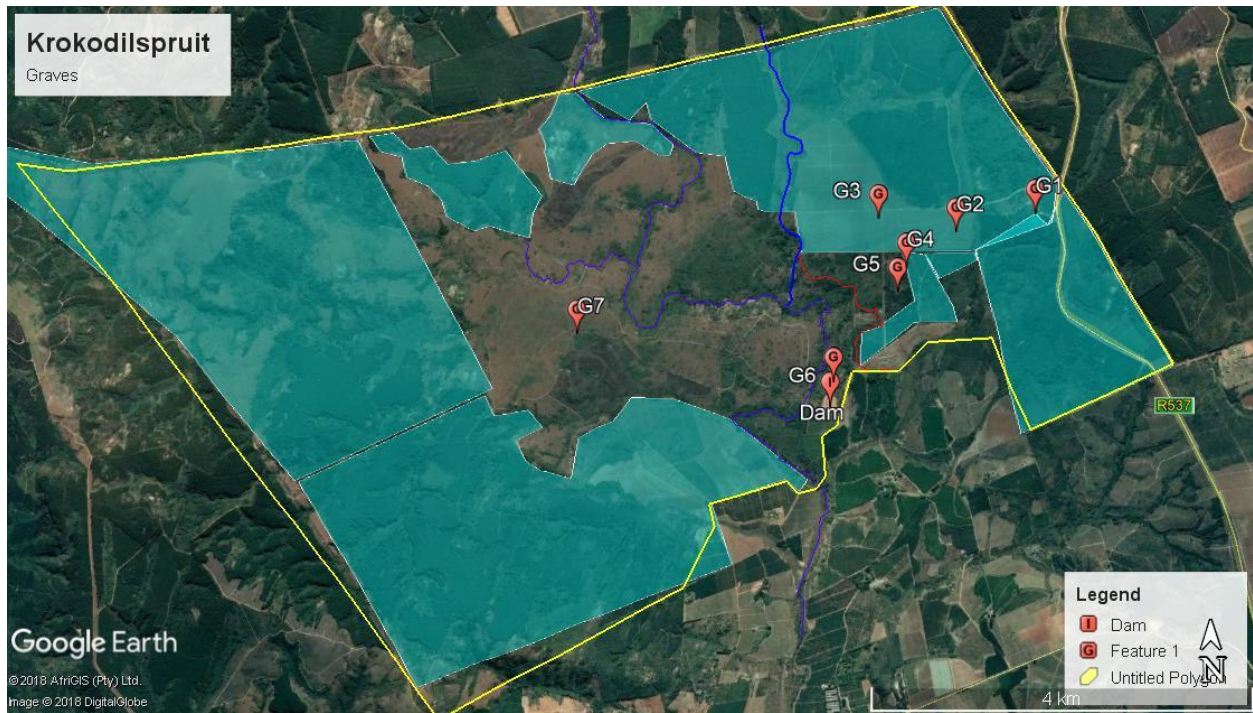


Fig. 3: Location of the burial sites / graves on the farm.



Fig. 4: The Beckenstrater family graveyard (G1), also includes approximately 40 informal graves which are situated in the plantation behind.



Fig. 5: Informal graves in the Beckenstrater family graveyard (G1).



Fig. 6: Some of the informal graves are marked (G1).



Fig. 7: Approximately 5 informal graves (G2), are located in a de-bushed plantation area.



Fig. 8: One grave (G3) is located in a de-bushed plantation area.



Fig. 9: Indistinct graves on the side of the road (G4).



Fig. 10: An indistinct grave site on the side of a road in a plantation area (G5), which was pointed out by community members.



Fig. 11: A possible grave was identified by the TLB driver near the historic houses (G6).



Fig. 12: A prominent single grave (G7), in the study area.



Fig. 13: A recent house on the farm which is currently used to accommodate contractors.



Fig.14: The historic (1910) farmhouse which was altered and compromised during the early 1970's by Mr. Beckenstrater (Sr).



Fig. 15: A current workshop which was previously used to house prisoners from Barberton who were hired to work on the farm.



Fig. 16: The structure was originally built with baked bricks. It was changed to be used as a workshop in later years.



Fig. 17: The ruin of the Mill which used water to generate electricity.



Fig. 18: Concrete supports (Mill infrastructure), are still visible in the river.



Fig. 19: The original earth Canal was lined with concrete during the 1960's.



Fig. 20: The Canal with added new infrastructure, is still being used on the farm.