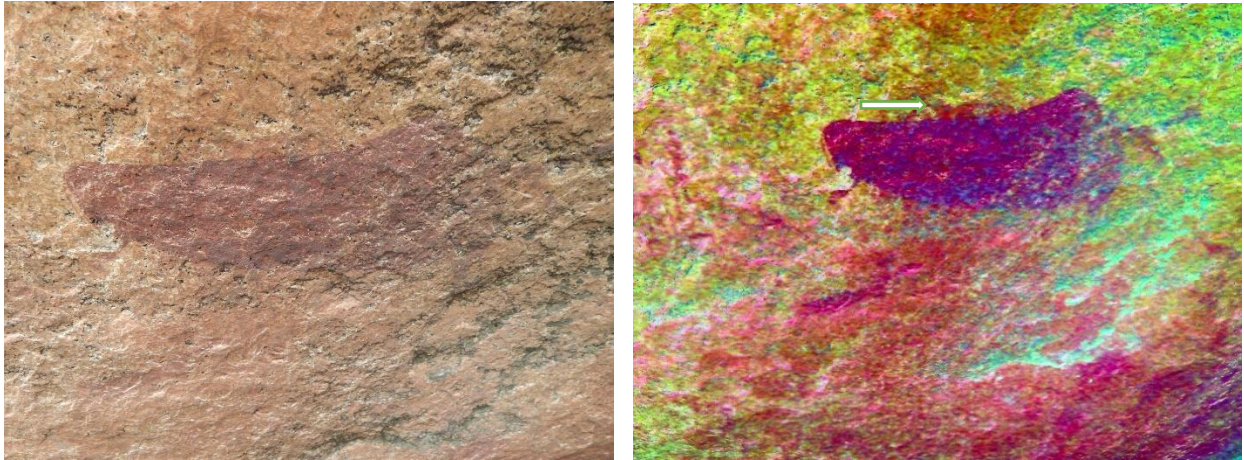


APPENDIX 3: NORTHdene 1A: PHOTOGRAPHIC DOCUMENTATION



Figs. 17 & 18: The most visible antelope in the panel. The original colour (dark red ochre) is visible on the left, and a colour enhanced photograph is on the right. There is another faint image (antelope) above this image. A group of faint human figures are visible to the left. This antelope is superimposed on a smaller buck / antelope (see arrow). Chip marks and ochre washing obscure the images above and below this image. A fugitive colour such as white, was probably used for the head.

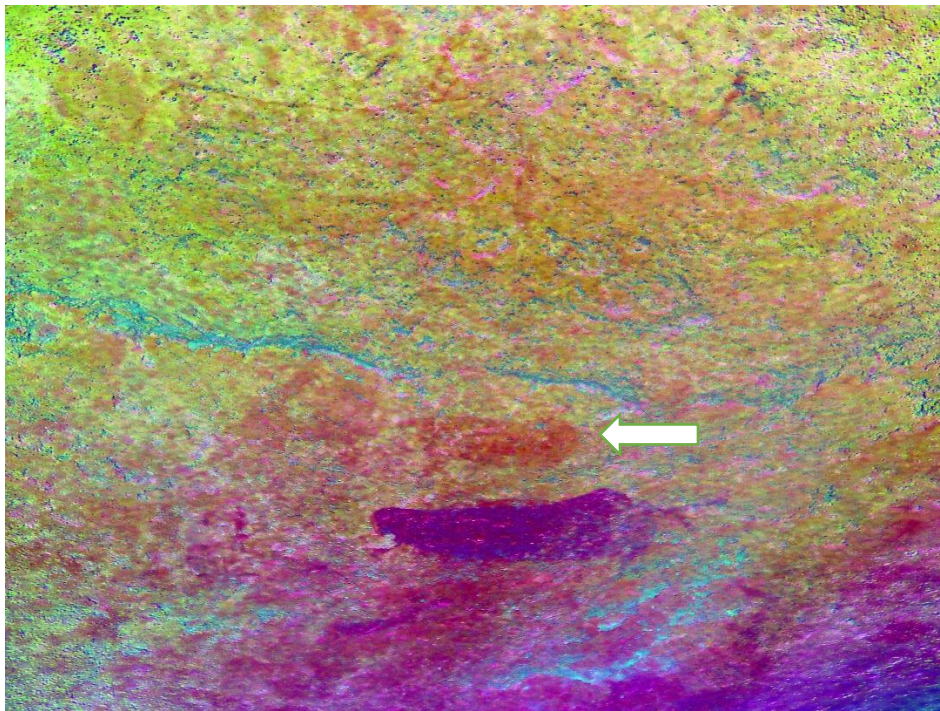


Fig. 19: Another antelope is visible directly above the dark red ochre antelope.

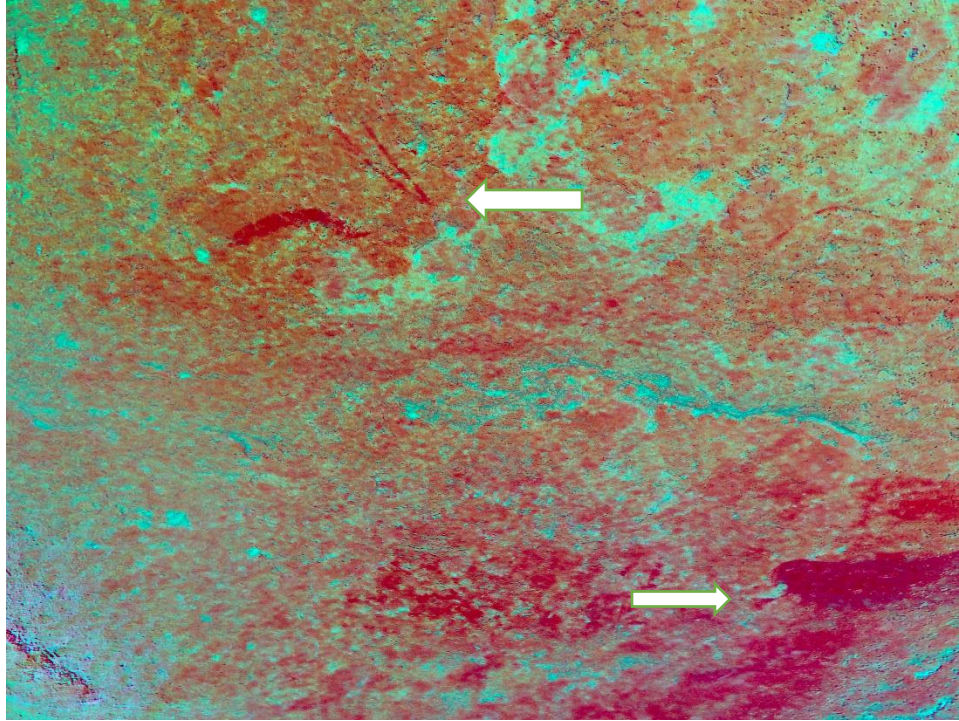


Fig. 20: A clear image of antelope horns, as well as a prominent red line is visible above and to the left of the dark red ochre antelope (see arrows). This animal was also probably done in two colours, of which one had already faded. Chip marks and ochre washing further obscures other images.

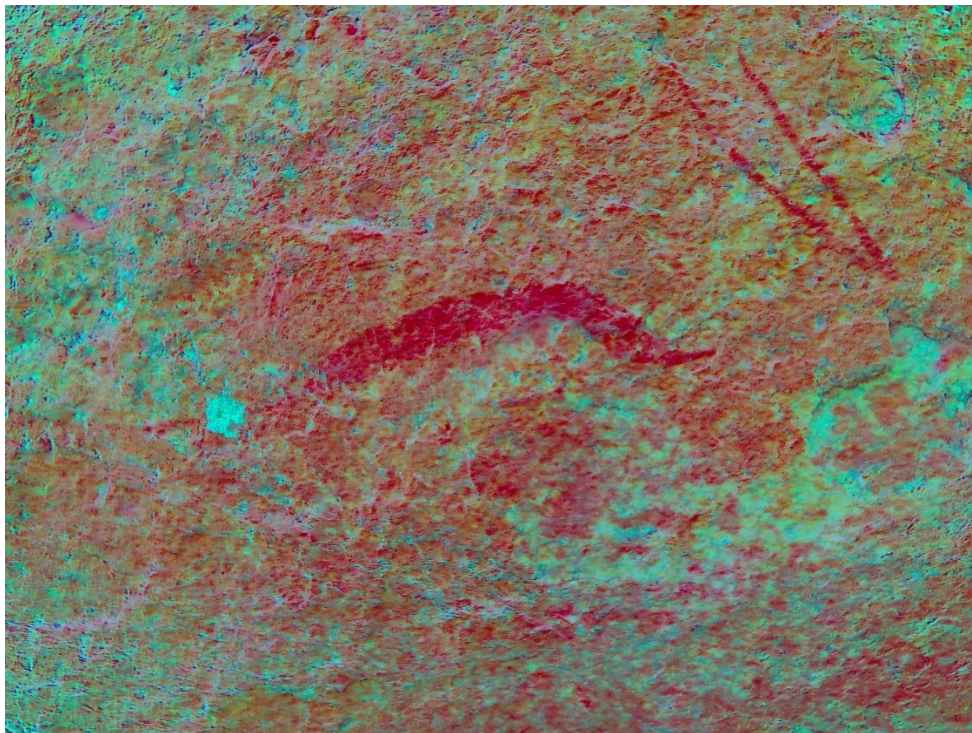


Fig. 21: Detail of the antelope with distinct horns. Chip marks have damaged this image.

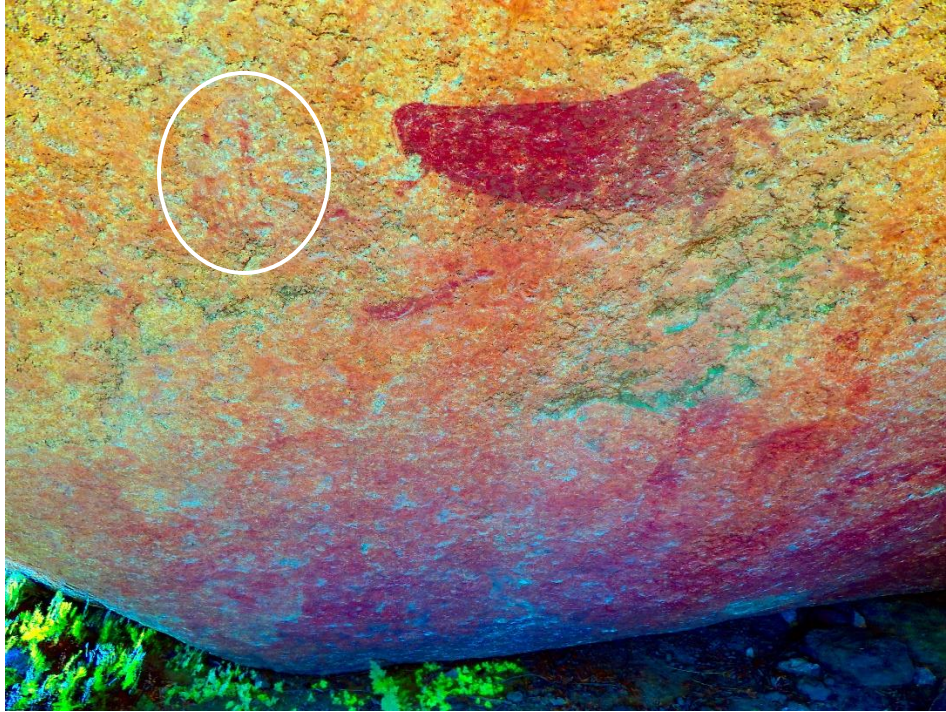


Fig. 22: A group of faint human images are visible to the left of the dark red ochre antelope. Note the severe ochre wash damage below this image towards the bottom curve of the boulder.



Fig. 23: Detail of the images below the dark red antelope. Ochre washing obscured most of the images.

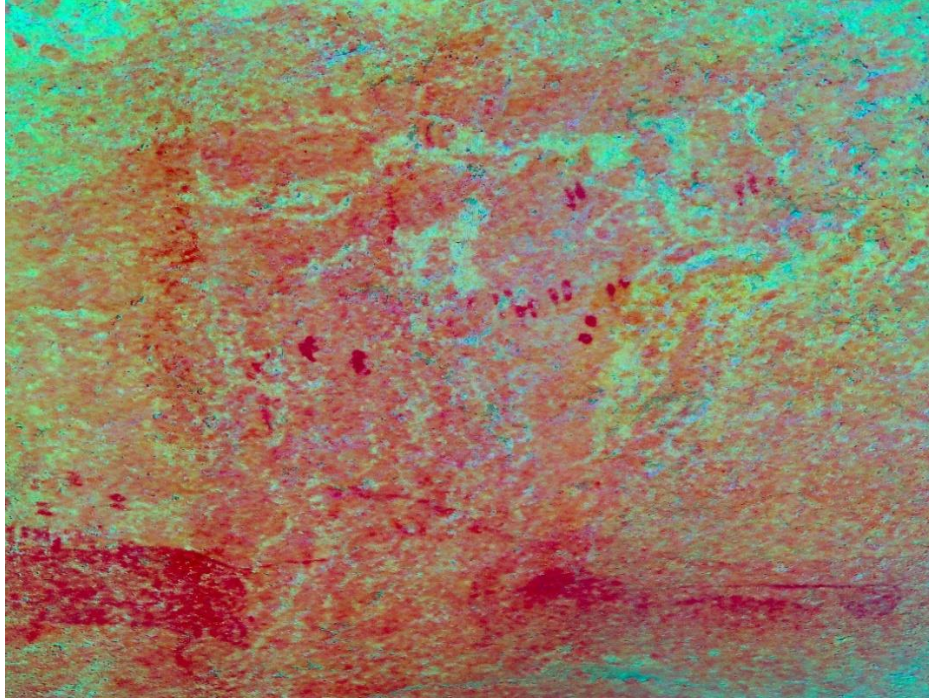


Fig. 24: Two other prominent (but extremely faint) images of antelope are situated to the right of the dark red antelope. For the purpose of this report, the one on the left is called a “*trance buck*,” and the one on the right, the “*long necked*” antelope. Many dots and short stripes are visible on or above these images. Both were originally done in more than one colour (bichrome or polychrome) of which one colour had faded completely and the other is already very faint.

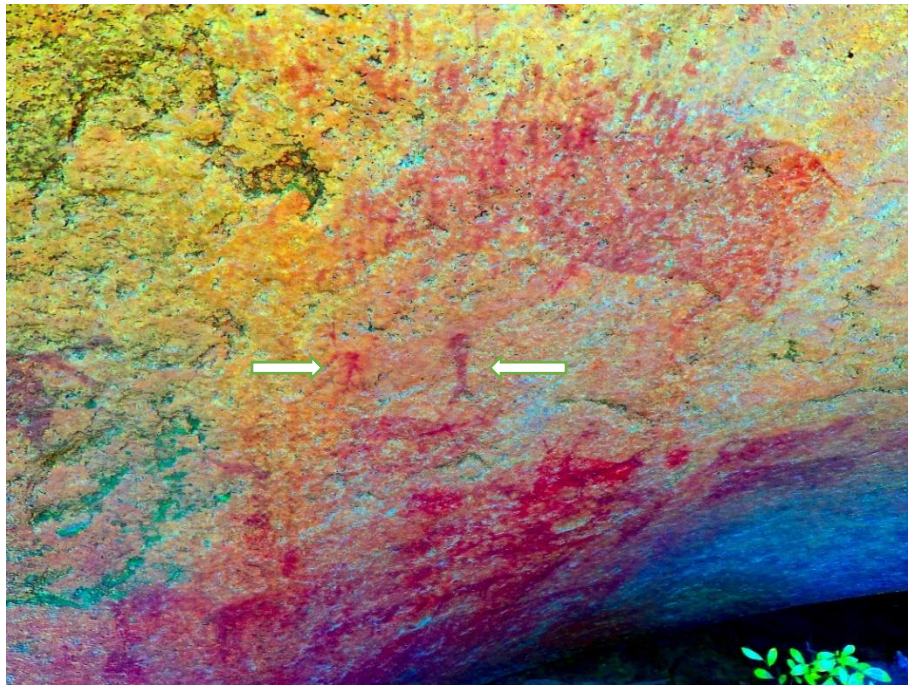


Fig. 25: Many stripes and dots (of which some could possibly have been human figures) are visible on and above the *Trance buck*. At least two human figures are visible below (see fig. 32). Severe ochre wash damage below the panel obscures many of the images. The neck line of the *Trance buck* is visible to the right. The head of the *Trance buck* was done in another colour which had already faded.



Fig. 26: Detail of the section below the *Trance buck*, which is largely obscured by chip marks and ochre wash damage. It was difficult to photograph the images with the large tree in front of the images.

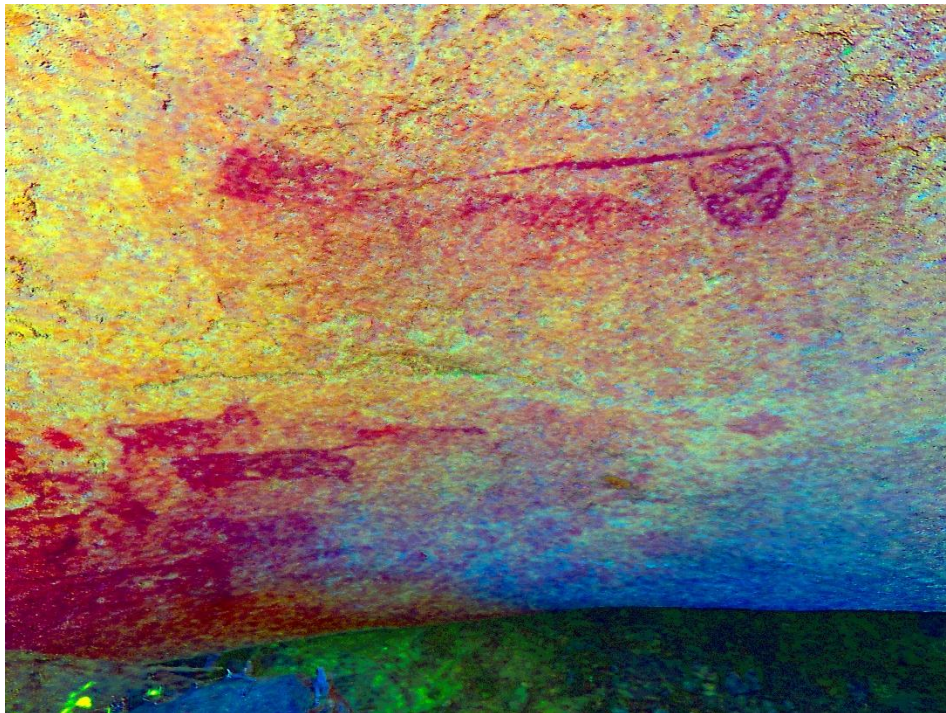


Fig. 27: Detail of the *Long necked* antelope. Images (possible smaller buck) are superimposed in the body of the antelope. The neck line is visible towards the upper left corner. The head of the *Long necked* antelope was done in another colour which had already faded.

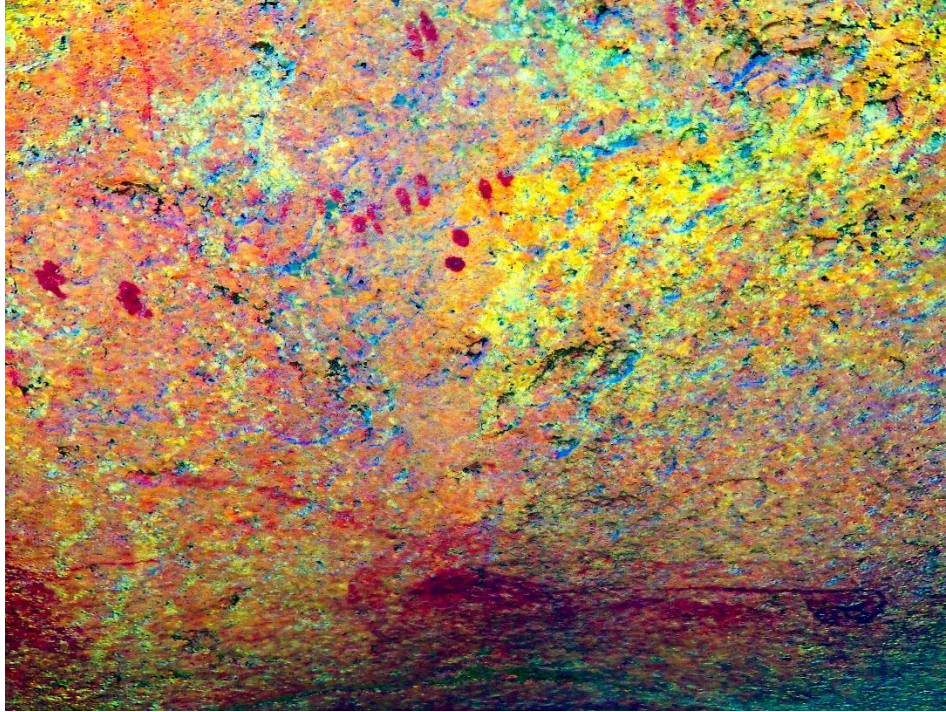


Fig. 28: A series of dots, in distinct pairs are also visible above the *long necked* antelope.

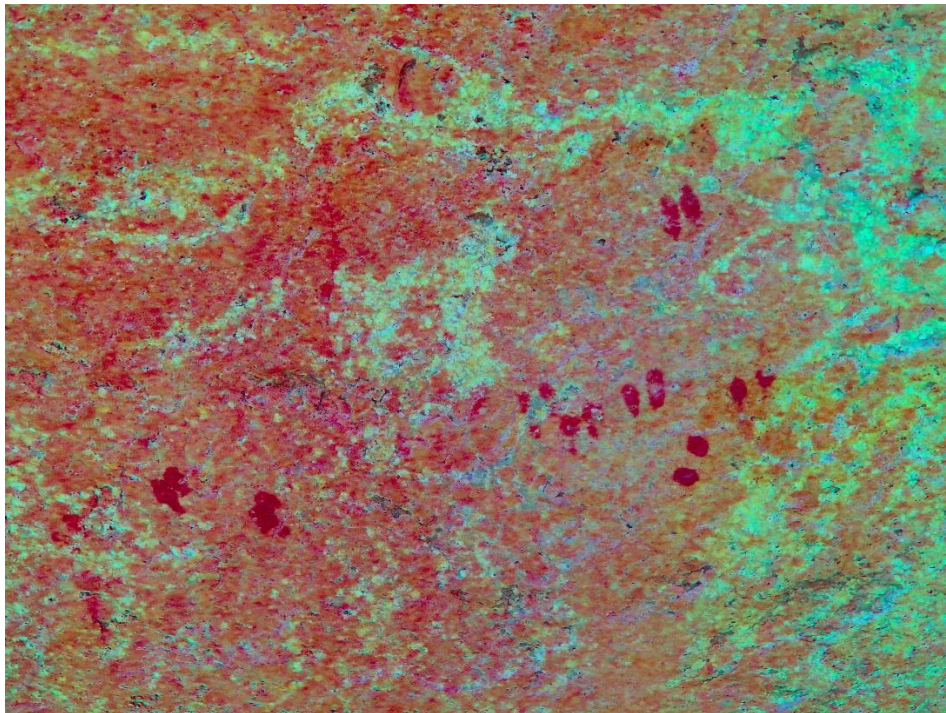


Fig. 29: A detail of the dots. Note that the dots were made in pairs.