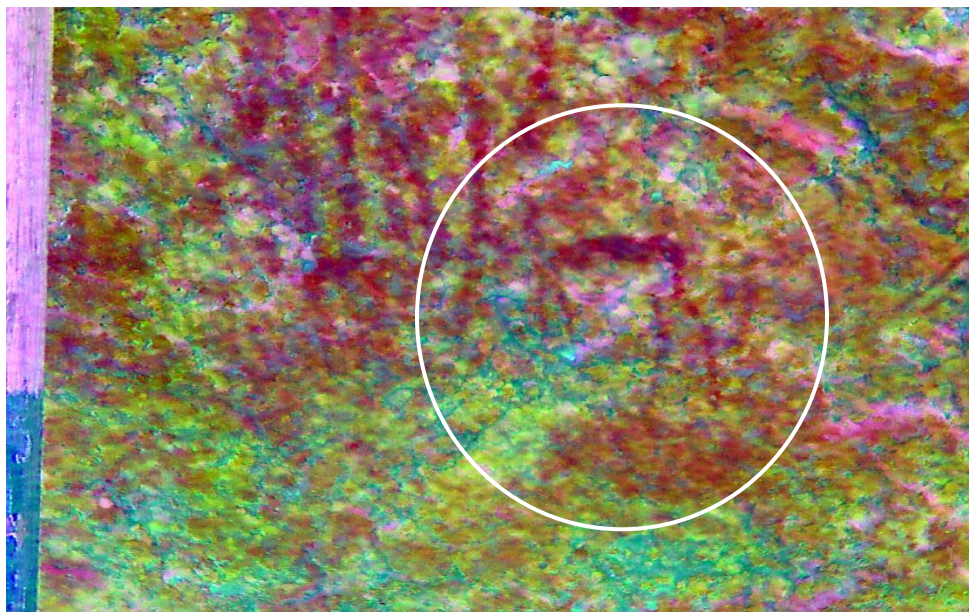
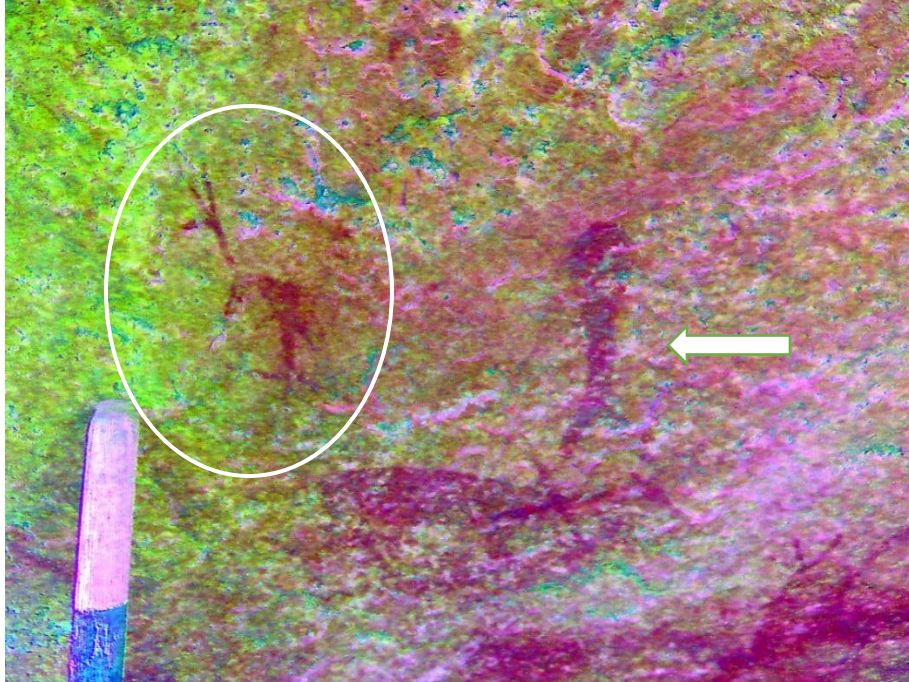


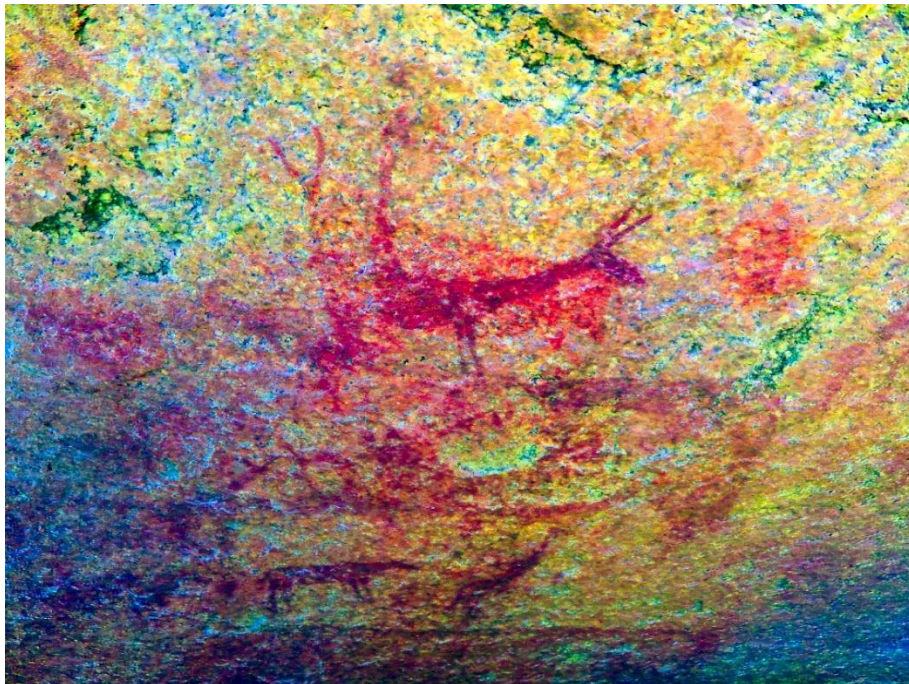
**Fig. 30:** A group of human figures are visible to the left of the dark red antelope (figs. 17 - 19). Chip marks and ochre wash damage obscure the images.



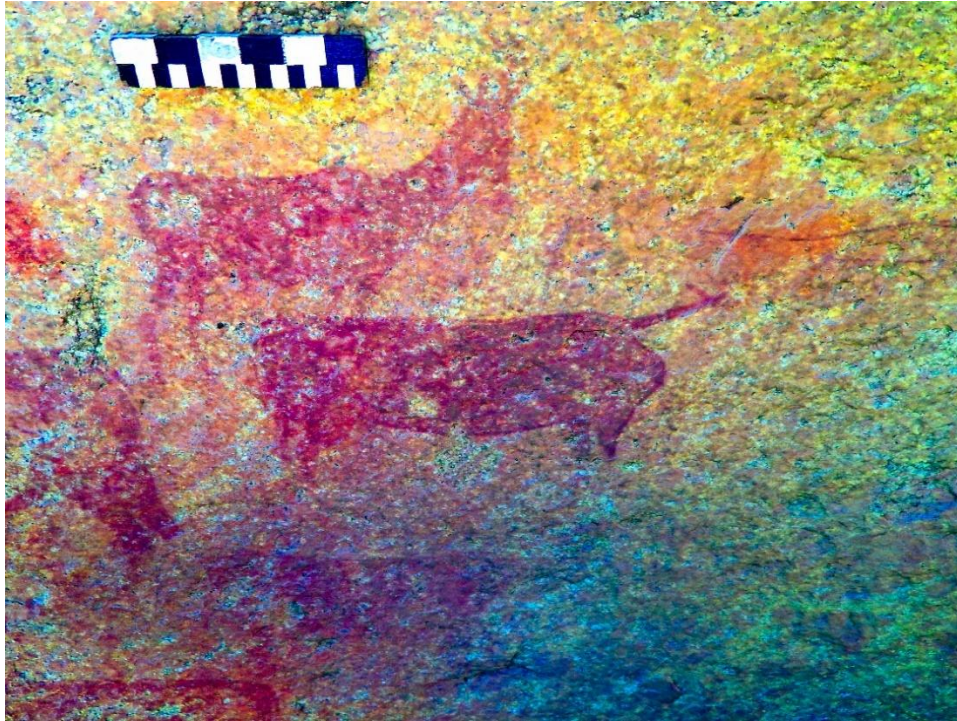
**Fig. 31:** A small image below the group, is in a forward bending posture. This suggests that it is supporting itself on sticks. A similar image was noted at the *Lochiel 2* site which is near Northdene (fig. 5).



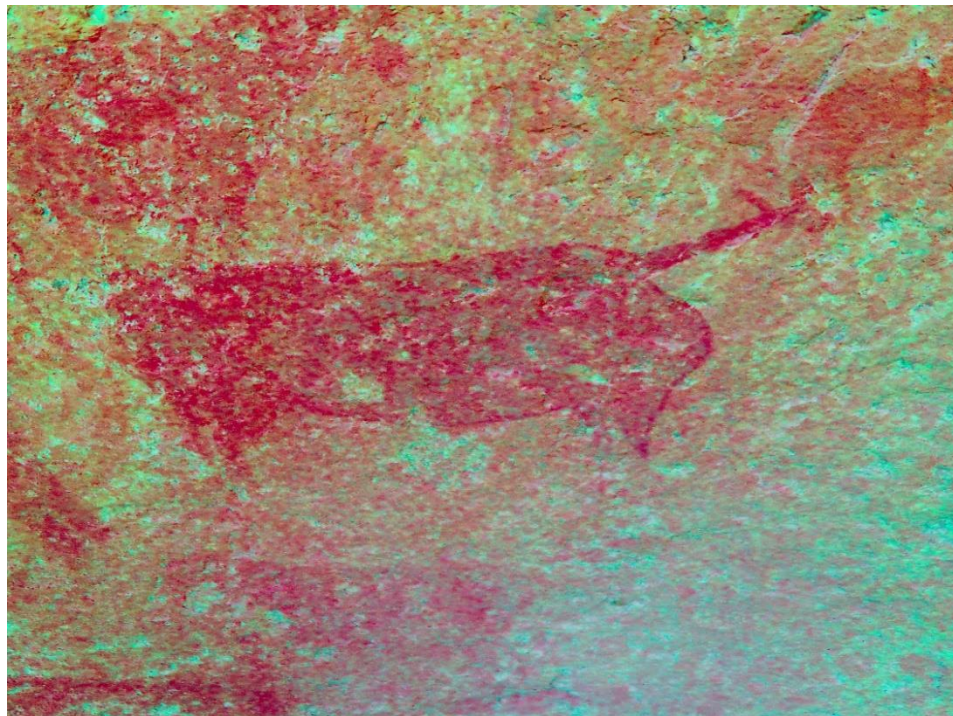
**Fig. 32:** A human figure (see arrow), is visible below the *Trance buck*. One arm is barely visible and is bended in a slightly upward position. Legs and the lower body of another figure are visible to the left. Two straight lines next to it are possibly sticks or weapons. The panel is severely damaged by chip marks and it is not possible to see clear images.



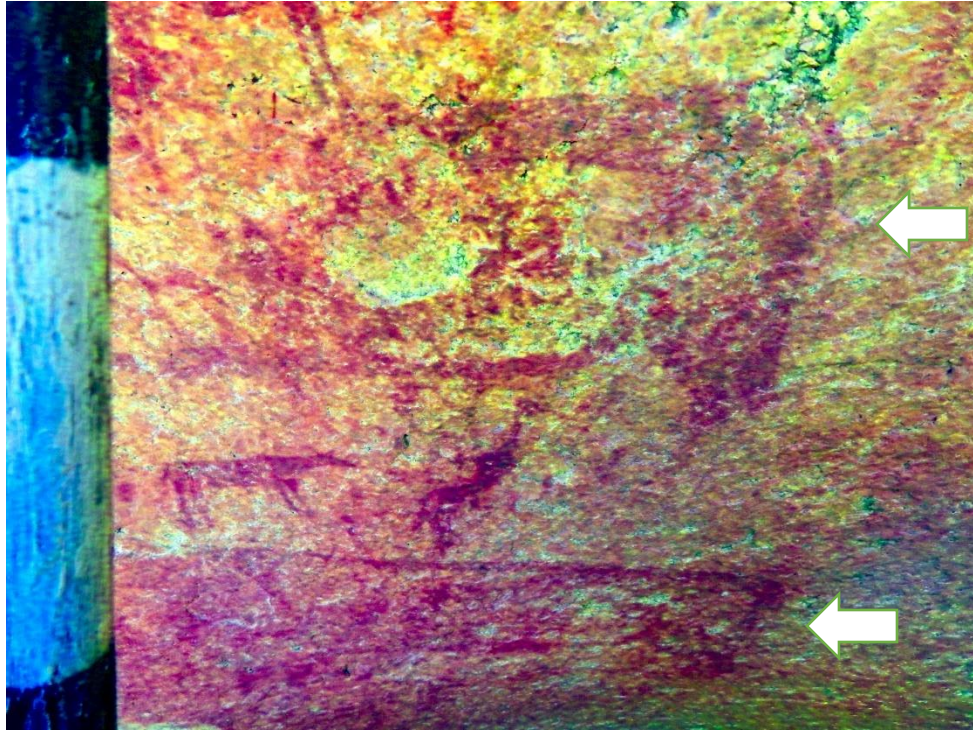
**Fig. 33:** Many superimposed images are visible in the panel below the *Trance buck*. The images have been damaged by chip marks and ochre washing. Note the two distinct superimposed buck which are done in different colours.



**Fig. 34:** The top antelope is a depiction of a hartebeest, as identified by its horns and square snout. Another buck / antelope is visible to the right. Note the distinct outline on the back of the buck / antelope which is done in a different colour. See the chip marks as well as ochre wash damage.



**Fig. 35:** The antelope beneath the hartebeest has a distinct outline. The neck and face were in a different colour which has already faded. Note the chip marks and ochre wash damage.



**Fig. 36:** The posteriors of two large antelope are vible in this image. Both have been severely chipped. Ochre wash also occurs extensively.