

NORTHDENE 1B: PHOTOGRAPHIC DOCUMENTATION

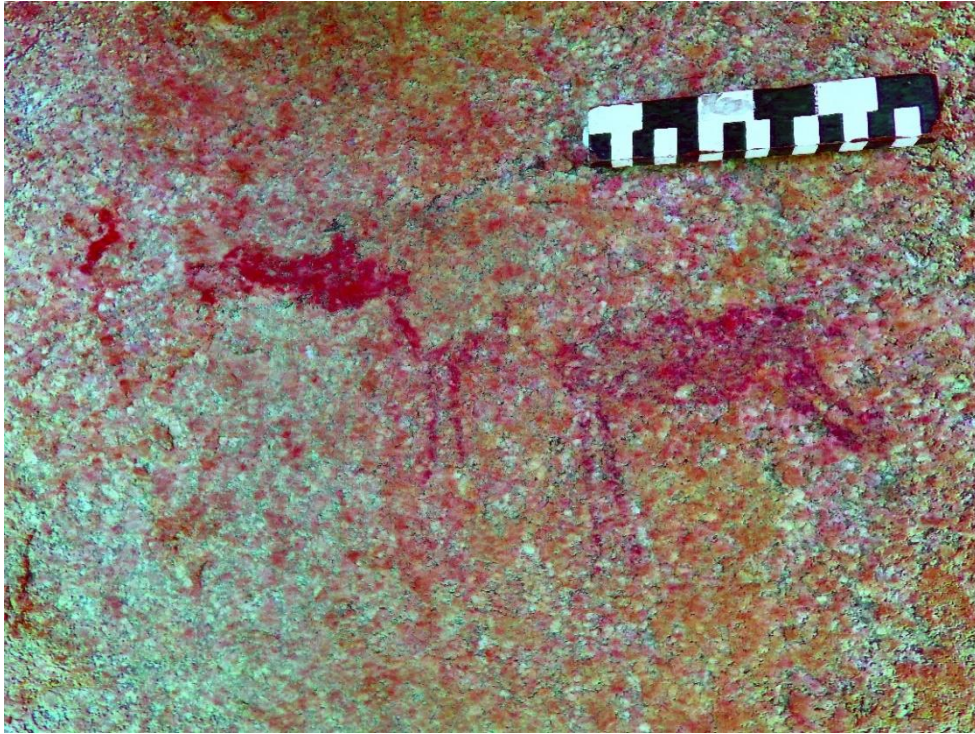


Fig. 37: A group of buck on the left of the panel. The big ears of the first animal suggest that these are rhebuck. Chip marks have damaged the images.

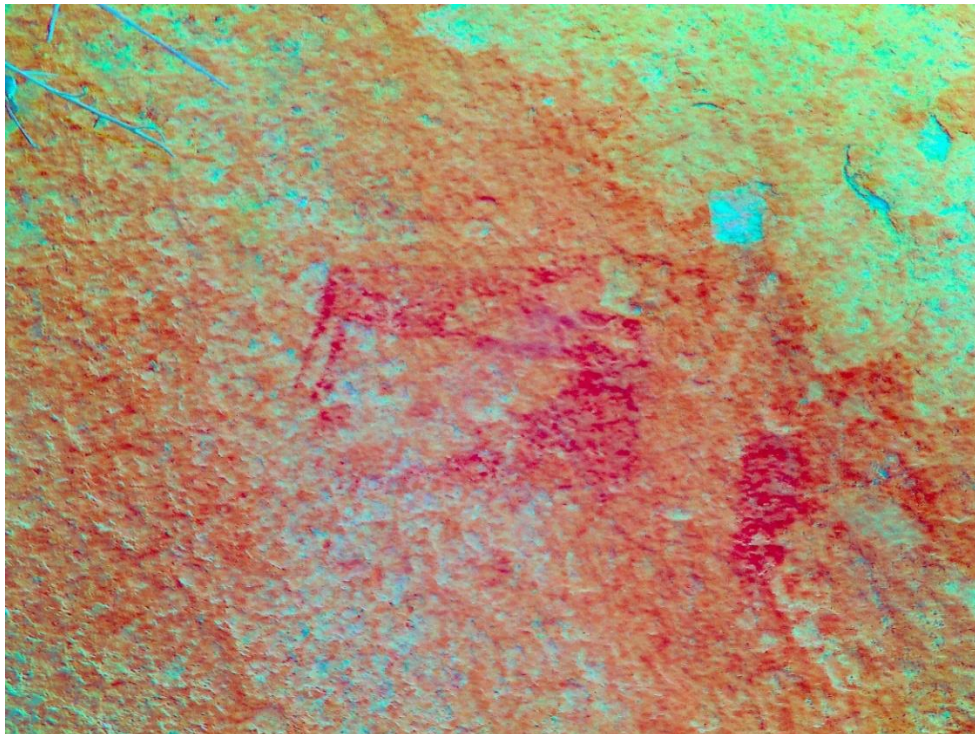


Fig. 38: A group of buck which are obscured by ochre washing and chip marks, are roughly situated in the middle of the panel and are extremely faint.

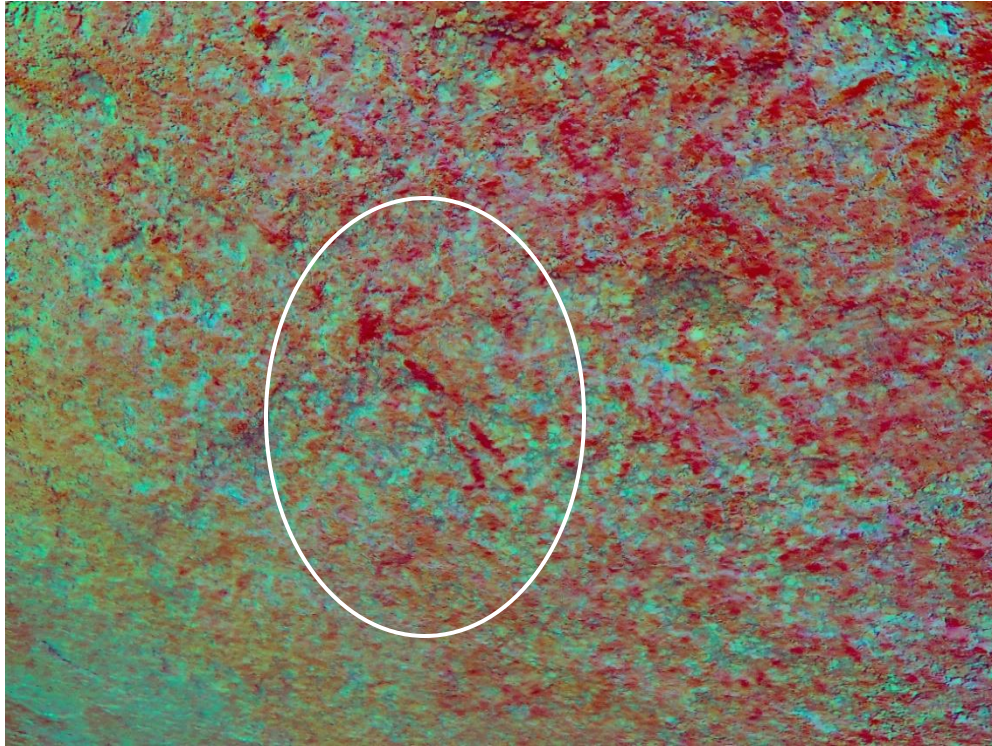


Fig. 39: A human figure which is barely visible on the panel, to the left of the group in fig. 40.

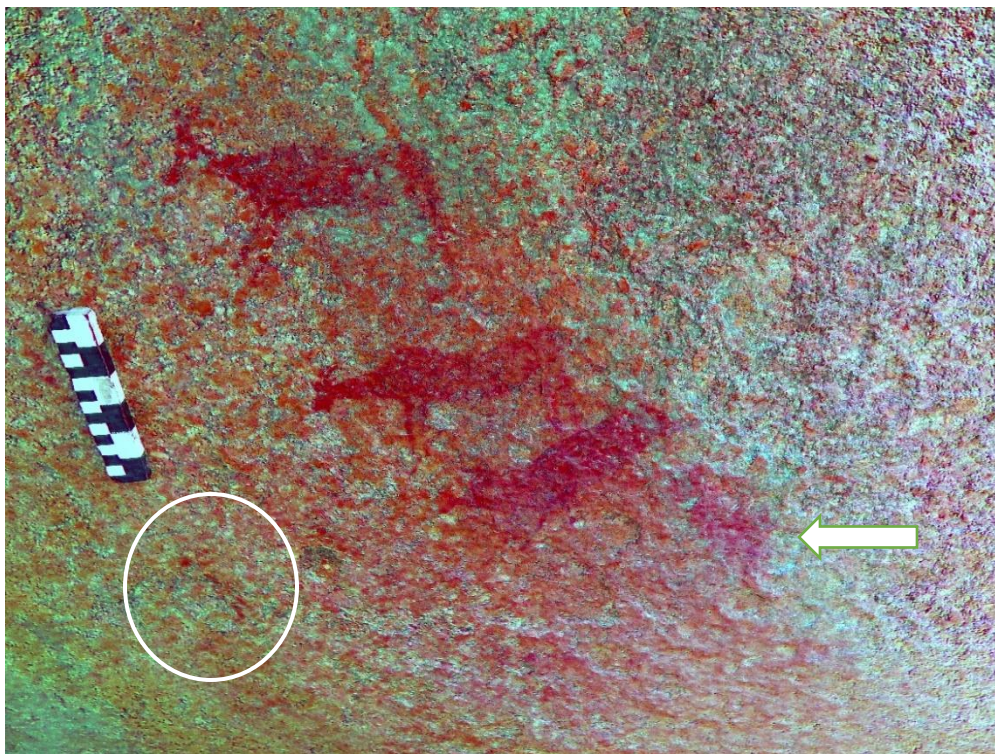


Fig. 40: Three distinct buck (the fourth buck at the bottom has almost faded completely), painted one above the other. Note the faint human figure to the left of the animals, fig. 39 (see oval). Chip marks and ochre washing have obscured the images.

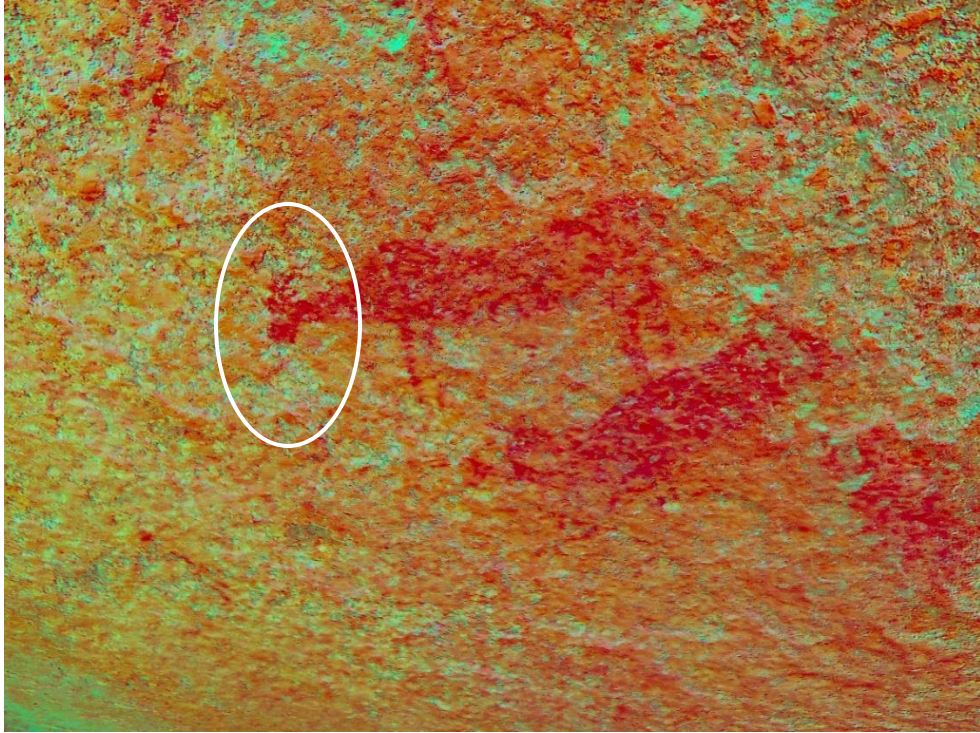


Fig. 41: Detail of the head of the second animal with distinct horns.

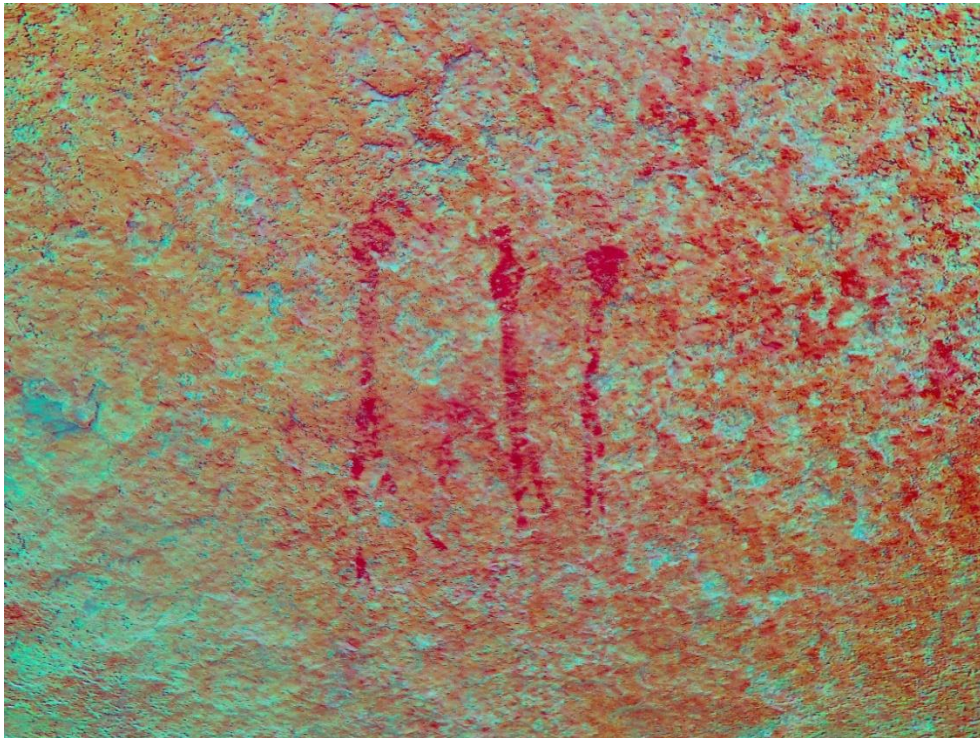


Fig. 42: At least three elongated figures - therianthropes (transformed to have animal features – antelope / buck heads and hoofs), superimposed on a small buck. Chip marks have damaged these images extensively.