

## **Crushers**

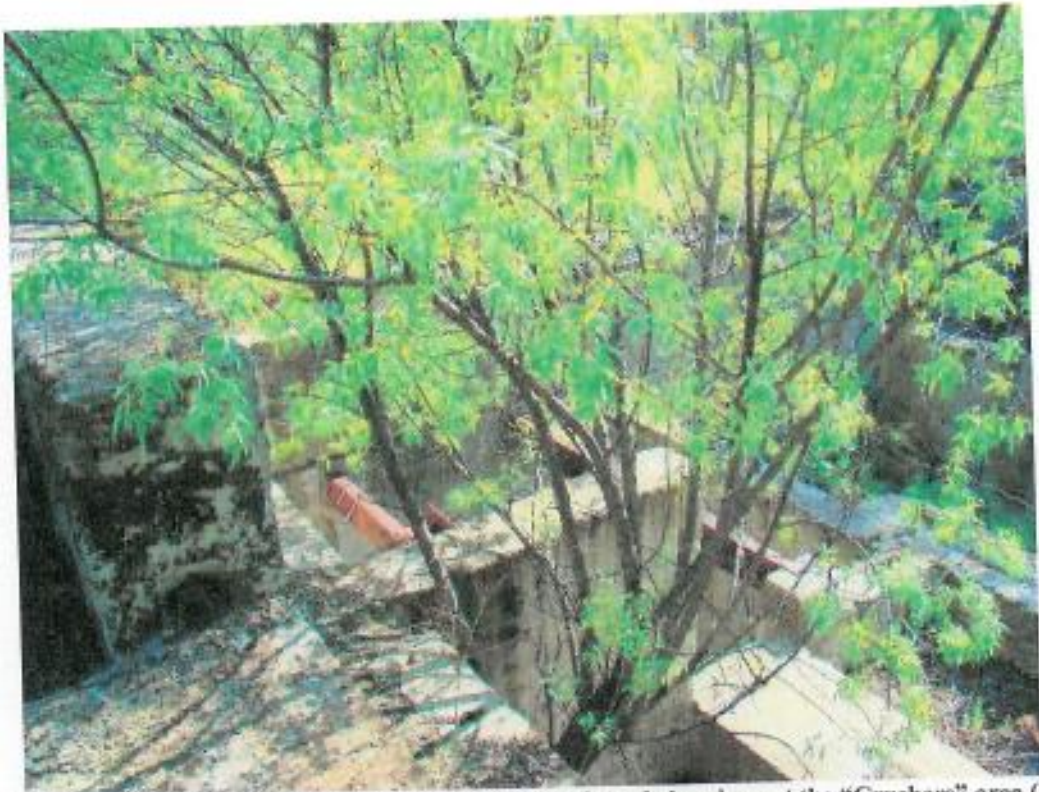
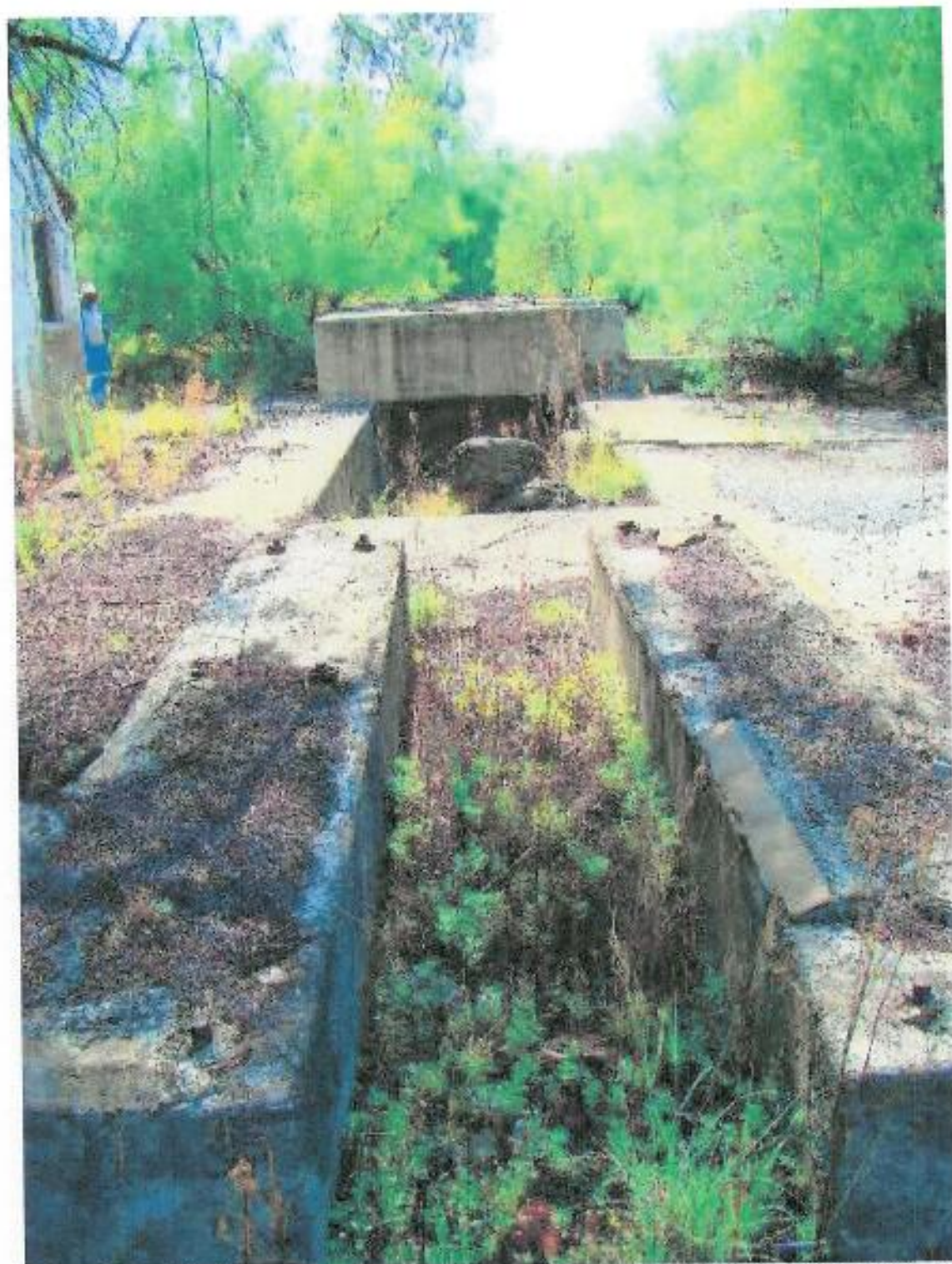


Figure 32: Detail of the sub-surface concrete channels and chambers at the "Crushers" area (1)



Figure 33: Detail of the sub-surface concrete channels and chambers at the "Crushers" area (2)



**Figure 34: Details of the concrete channels and sub-surface channels at the "Crushers" area (3)....to the left (north) is the Engineers Offices at the Plant**



Figure 35: Detail of the concrete channels and sub-surface chambers at the "Crushers" area (4)

The foundations depicted in the above pictures of the crusher area constitute the sum total of what is left of the sorting and crusher area. Nothing is left of the primary and secondary screening areas that were respectively immediately to the north and to the west of the crusher area, the latter constructed in an L-shape on the eastern and southern side of the plant.

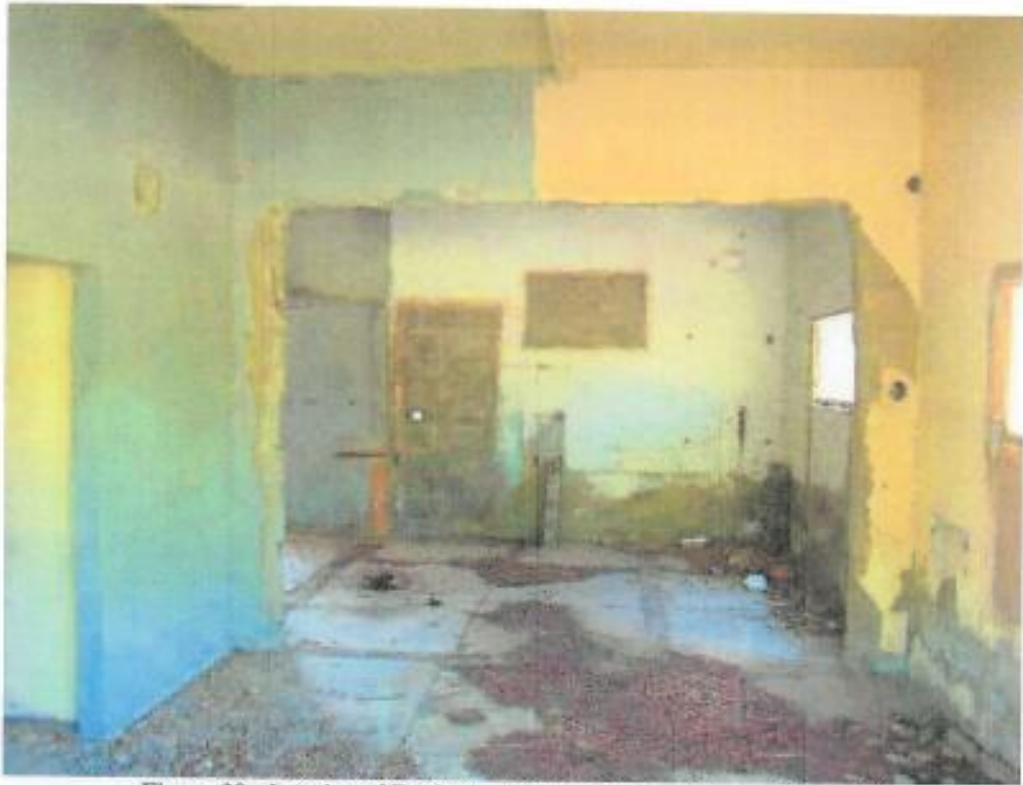
## **Engineers Offices**



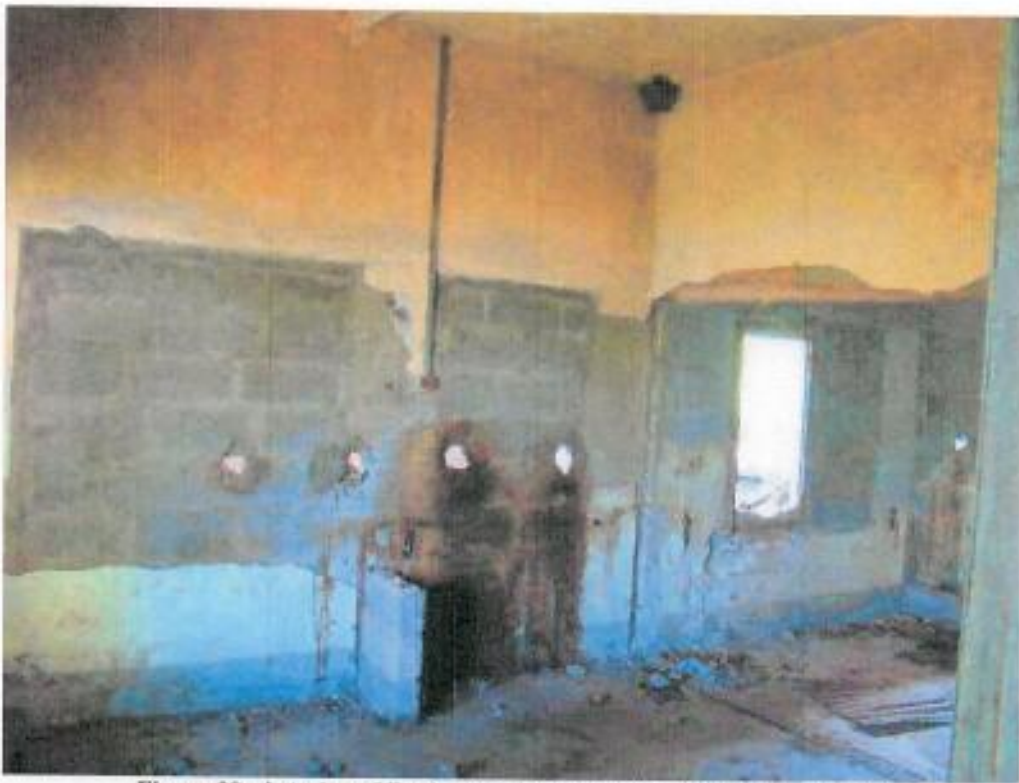
Figure 36: Northern view of Engineers Offices adjacent Change House. Note bicycle stands on stoep



Figure 37: Eastern view of Engineers Offices adjacent Change House



**Figure 38: Interior of Engineers' offices adjacent Change House (1)**



**Figure 39: Interior of Engineers' Offices adjacent change House (2)**

## **Change Room**





**Figure 40: Interior of Change House that is connected to the southern side of the Shaft Offices (western section)**



**Figure 41: Interior of Change House adjacent Shaft Offices (eastern section)**



**Figure 42: Blocked up entrance to tunnel that connects compound to the change room and the change room to the mine (situated on the western side of the Change Room)**

## **Shaft Offices**



**Figure 43: Western side of exterior of Shaft Offices**



**Figure 44: Eastern side of exterior of Shaft Offices**

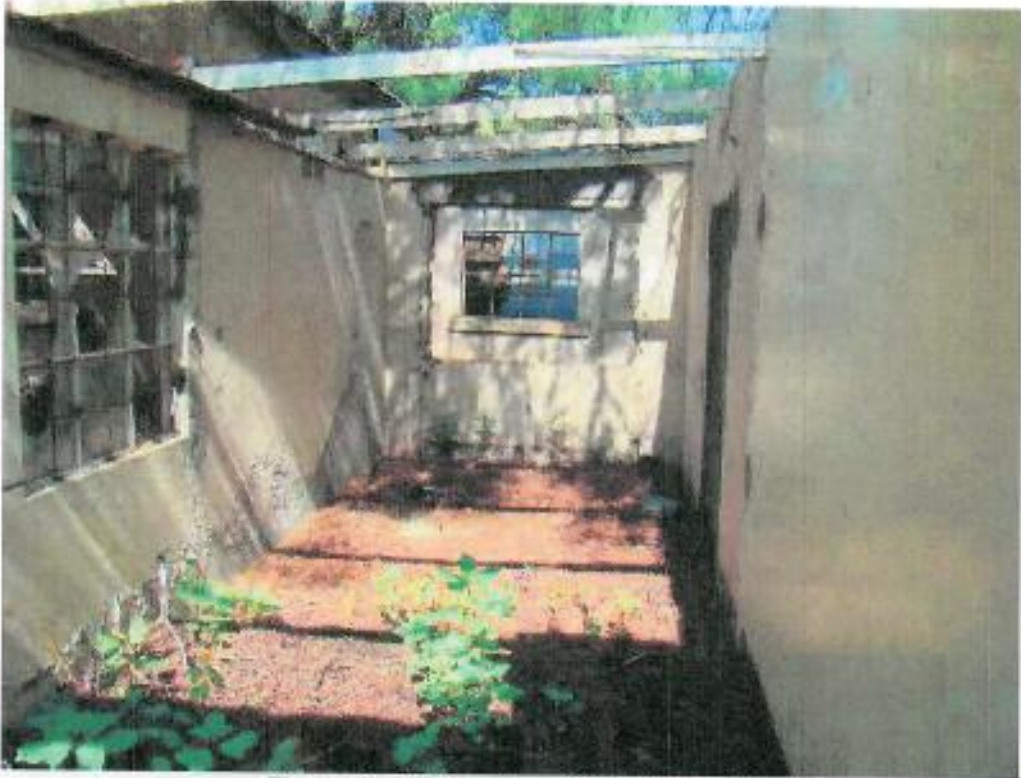


Figure 45: Interior view of Shaft Offices (1)



Figure 46: Interior view of Shaft Offices (2)



**Figure 47: Structures on western side of Shaft Offices**

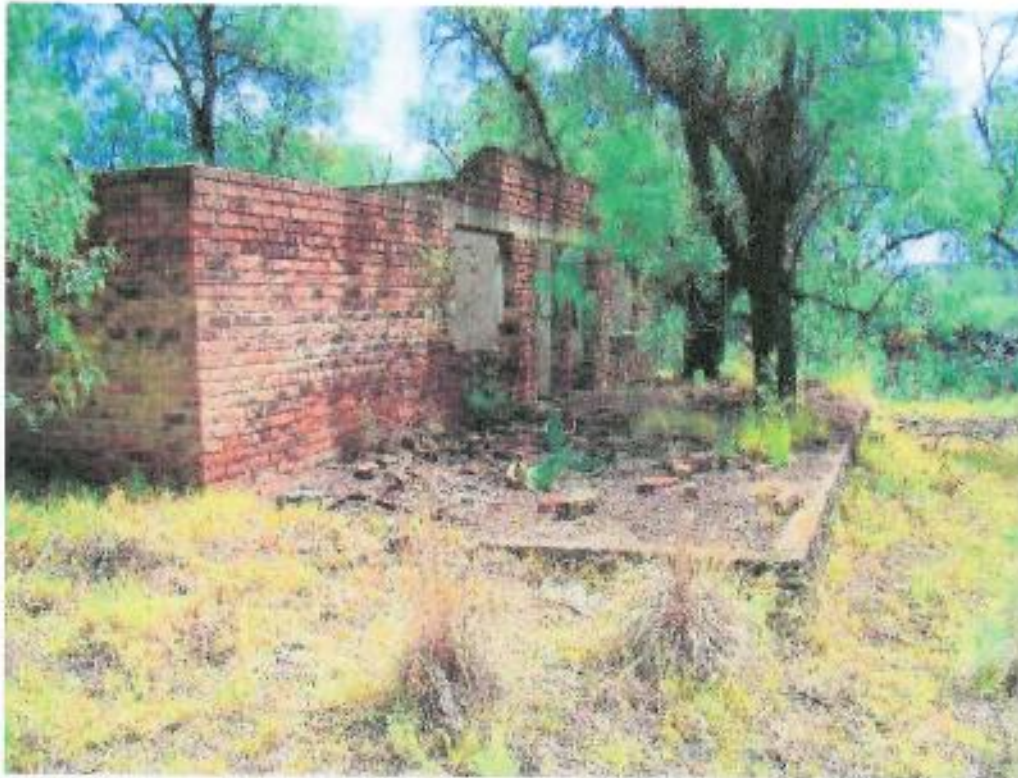


**Figure 48: Structures on northern side of Shaft Offices**

The following structures (Study Office, Riggers, Timber area and retainer wall) are situated north-east of the Rock Shaft Plant with the Riggers' remains immediately north of the No 1 Main Rock Shaft)

## **Study Office**

The retainer wall (refer to page 62) runs from a north-westerly to south-easterly direction where it makes a sharp turn towards the north. The Study Office is right against this latter section of the wall.



**Figure 49: Exterior of Study Office (eastern face)**



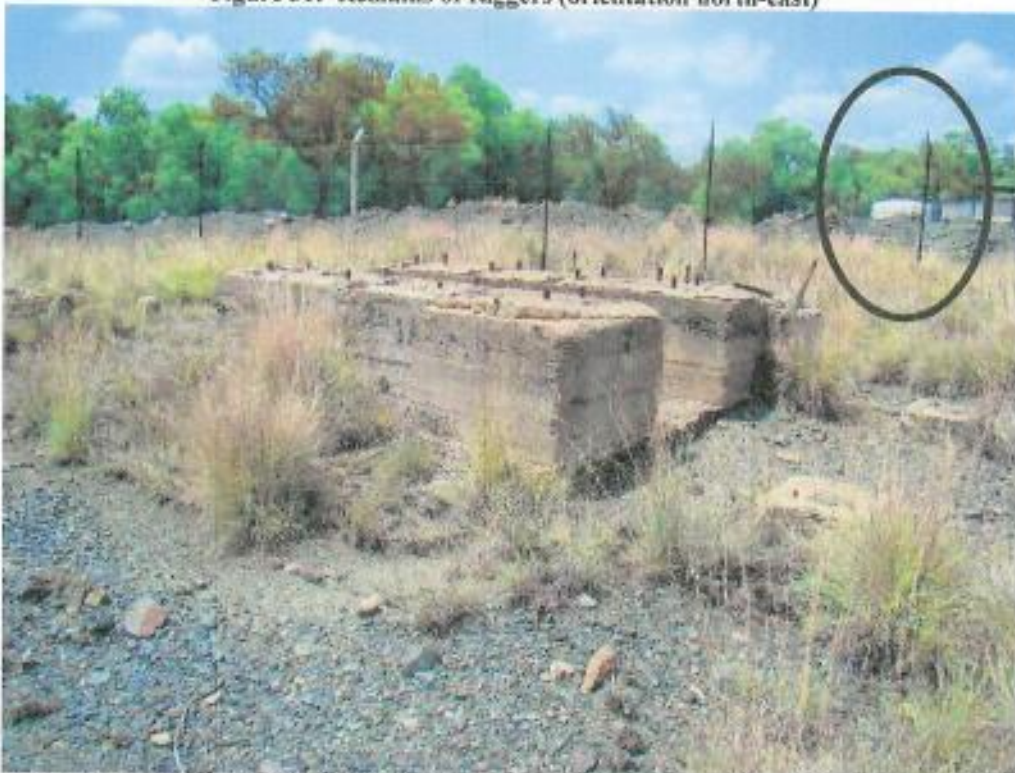
**Figure 50: Interior of Study Office**



# **Riggers**



**Figure 51: Remains of Riggers (orientation north-east)**



**Figure 52: Remains of Riggers (orientation south-east) Encircled area in back is the No 1 Main Rock Shaft remains**

The following photographs are of the remains of an unknown structure situated between the riggers and the Study Office.



**Figure 53: Remains of foundation of unknown structure with ditch on side (south-easterly orientation)**



**Figure 54: Foundation of unknown structure - orientation north-east**

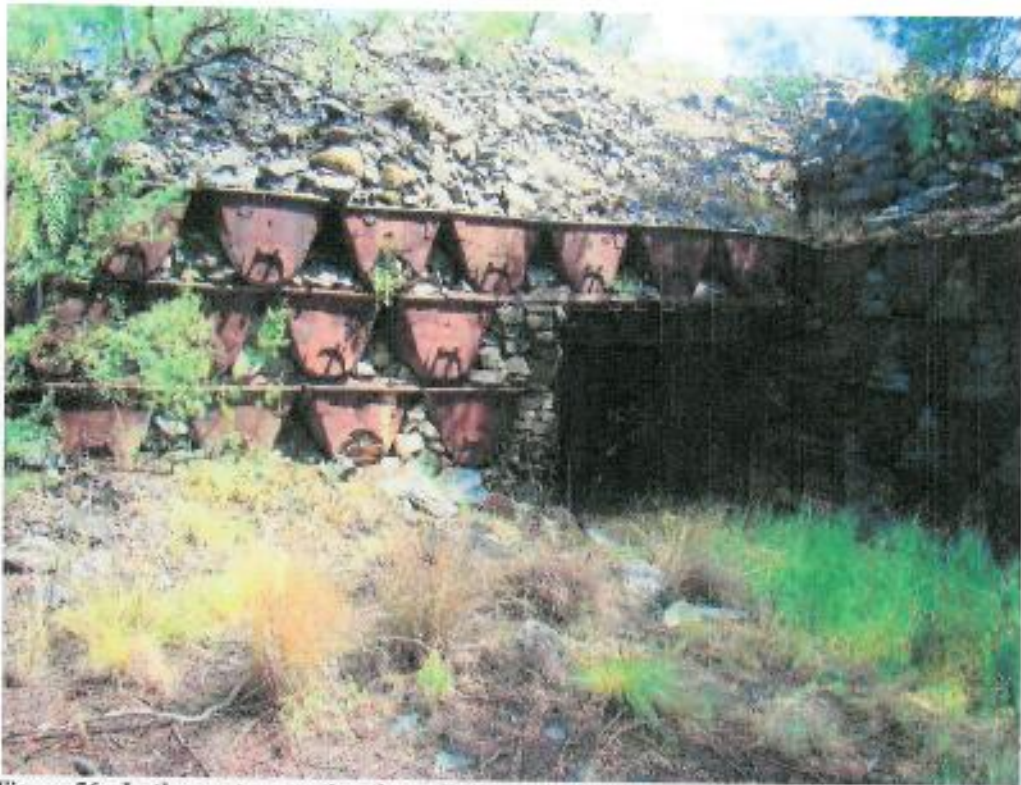
## Timber Area



**Figure 55:** Nothing remains of the Timber area that is on the southern side of the retainer wall discussed below. The cement slab and cement structure seem to be later additions

## **Retainer Wall**

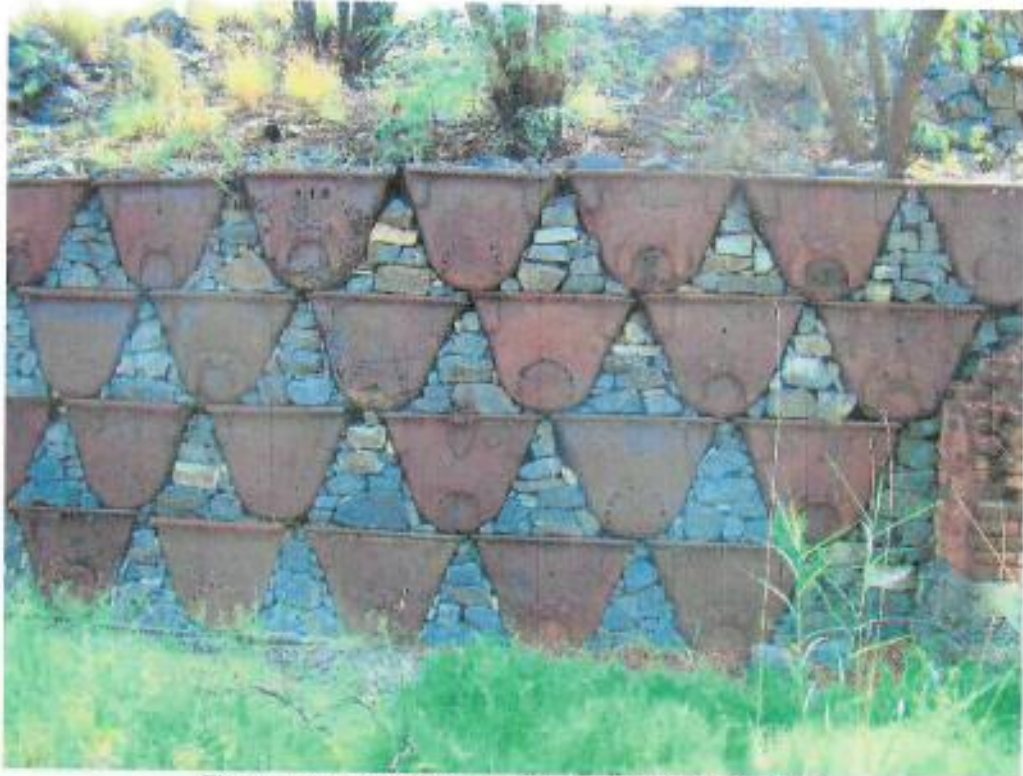
A unique construction of old cocopans, brick, cement as well as stone to reinforce a section of the retainer wall. The photographs are arranged in a sequence from left (west) to right (east) and shows all the various material used to construct (or reinforce) the wall. It is possible that this area could be related to earlier mining activities (i.e. pre-1949 when the Treatment Plant started operating).



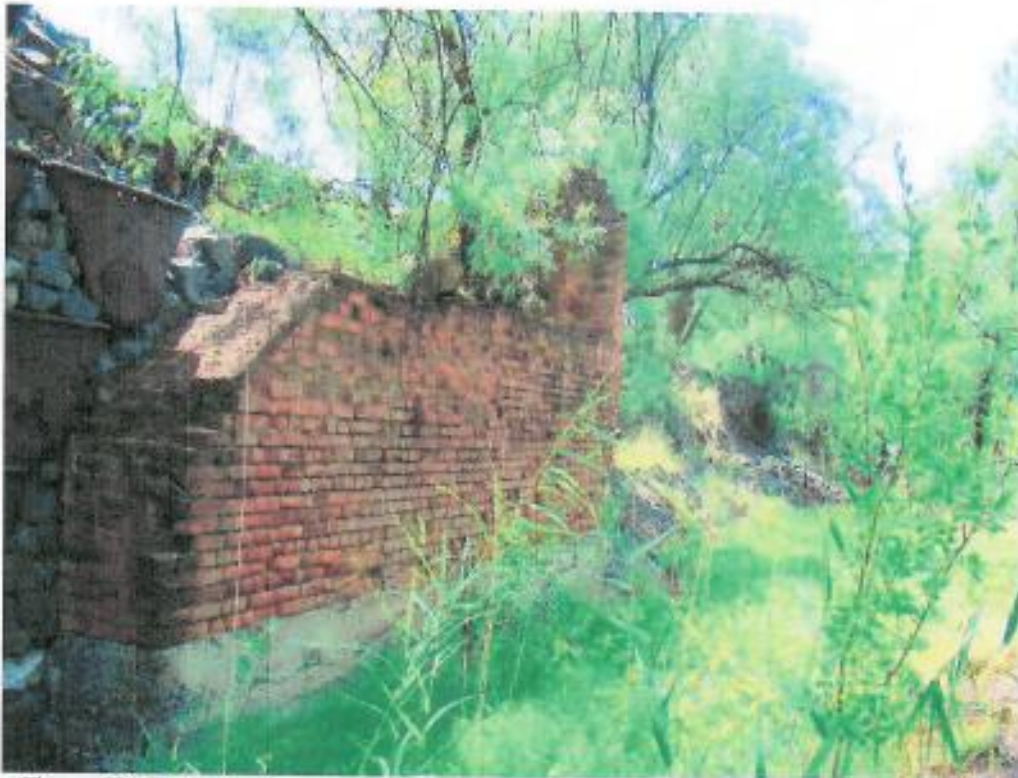
**Figure 56:** In the western section the wall has a small outcrop to form a bridge over the canal



**Figure 57:** Close-up view of canal passage in wall



**Figure 58:** Area to the right of the bridge over the canal



**Figure 59:** From the cocopan section of the wall a section of wall constructed with bricks



Figure 60: The brick reinforced section curves north-east towards an opening in the wall (cement-constructed bridge)



Figure 61: On the right-hand side of this picture the wall (stone and mortar) curves northward with the Study Office built flush against that section of the wall (not visible in this photograph)



From the crushers and screening areas the mined ground would have been transported to the washing plant via a conveyor belt. The washing plant is a network of underground chambers – some with a concrete slab cover, some with no cover and some which are partially covered with a cement slab. A few of the structures are above ground and some debris of demolished structures can be found on the side. A cement slab with the number "1965" written on it could be an indication that not all of the structures date to 1949 when the initial plant was constructed or it could be merely an identification number. Various pictures show metal pieces, bolts, etc where machinery would have been affixed to the cement slabs. No map could be obtained of the actual plant so the extent of the network of underground chambers not visible to the naked eye is unknown.



## Washing Plant Area

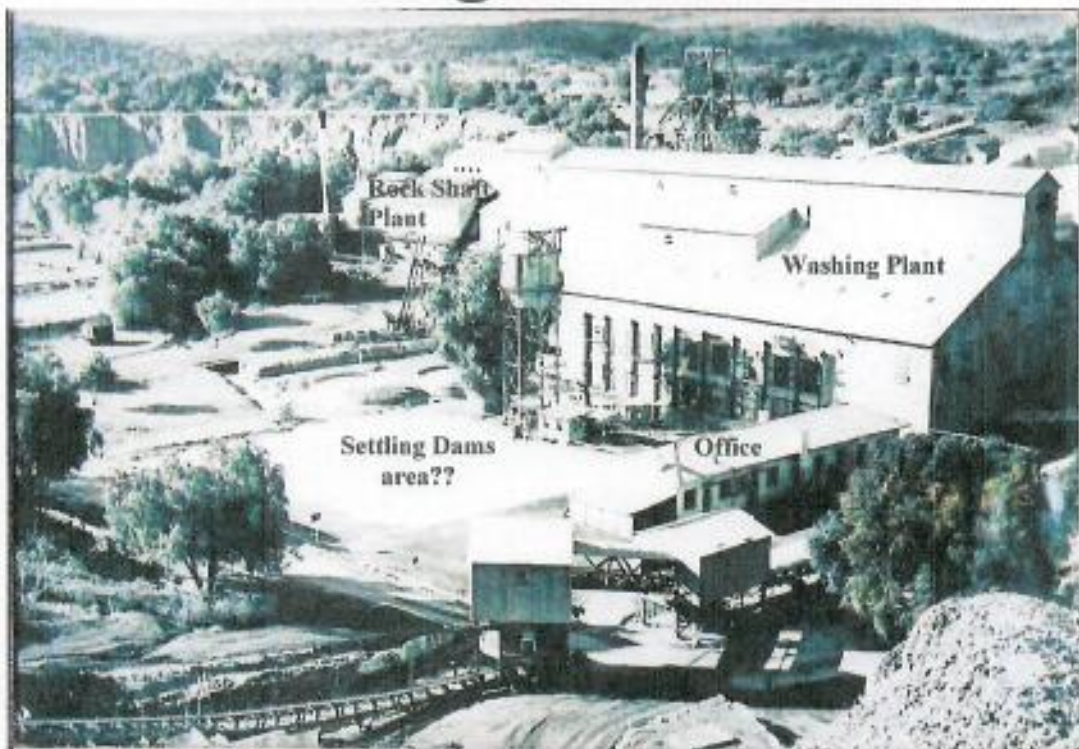
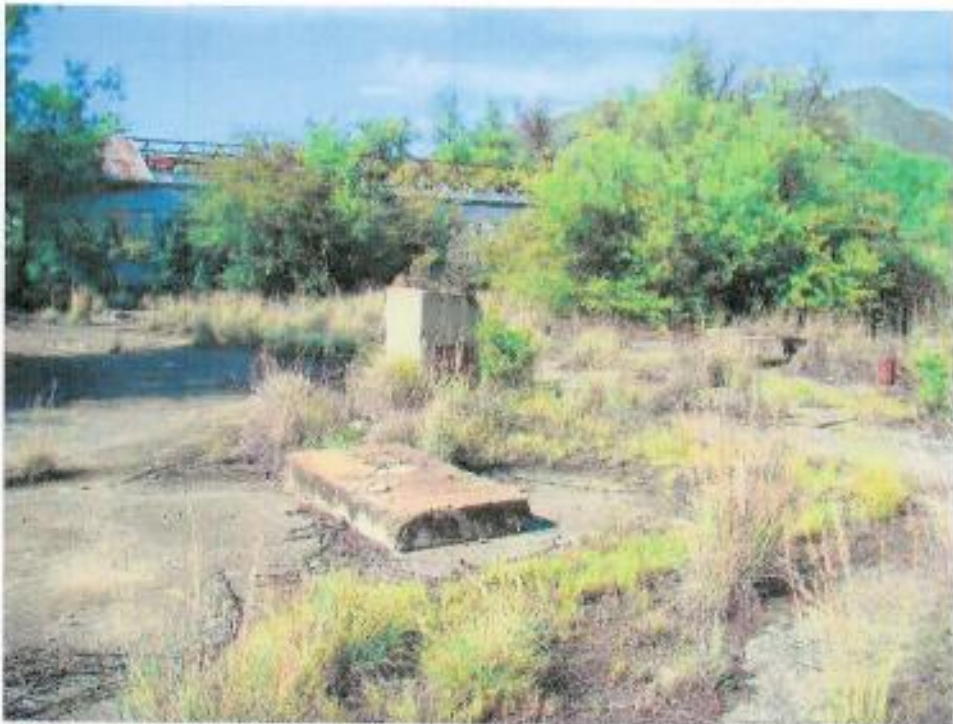


Figure 62: DBMC Archive photograph of Washing Plant Area. (Only the office building remains standing)



**Figure 63: Overall view of Washing Plant surface – north-easterly orientation**



**Figure 64: Overall view (south-westerly orientation) of area immediately adjacent Washing Plant on its western side – possibly part of plant (remains of Office building visible in the background)**



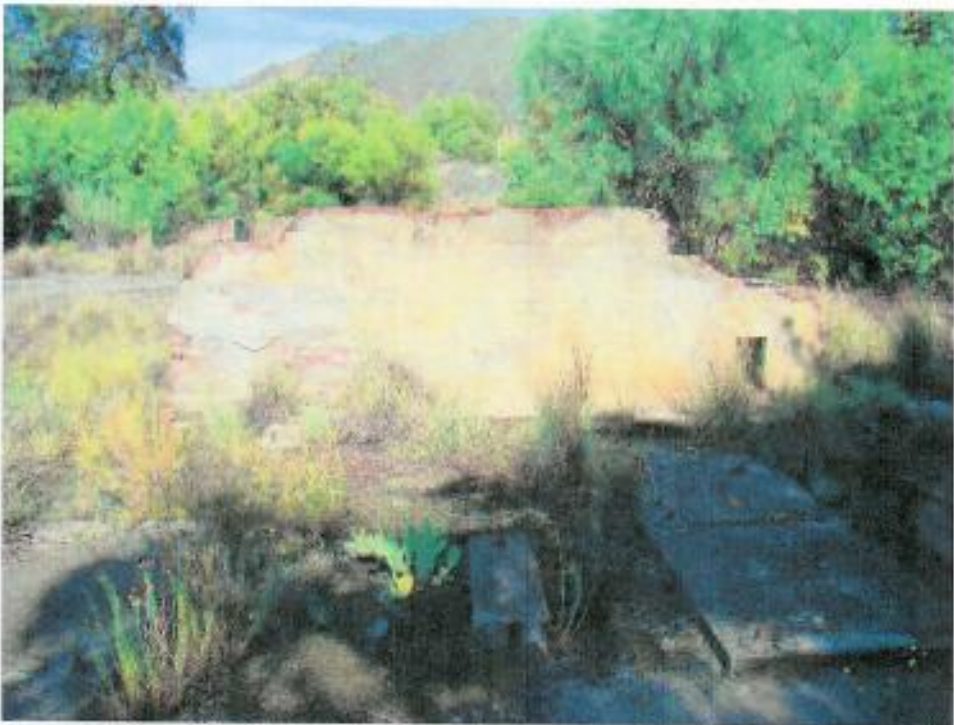
**Figure 65: Detail of above-ground structures at Washing Plant (1)**



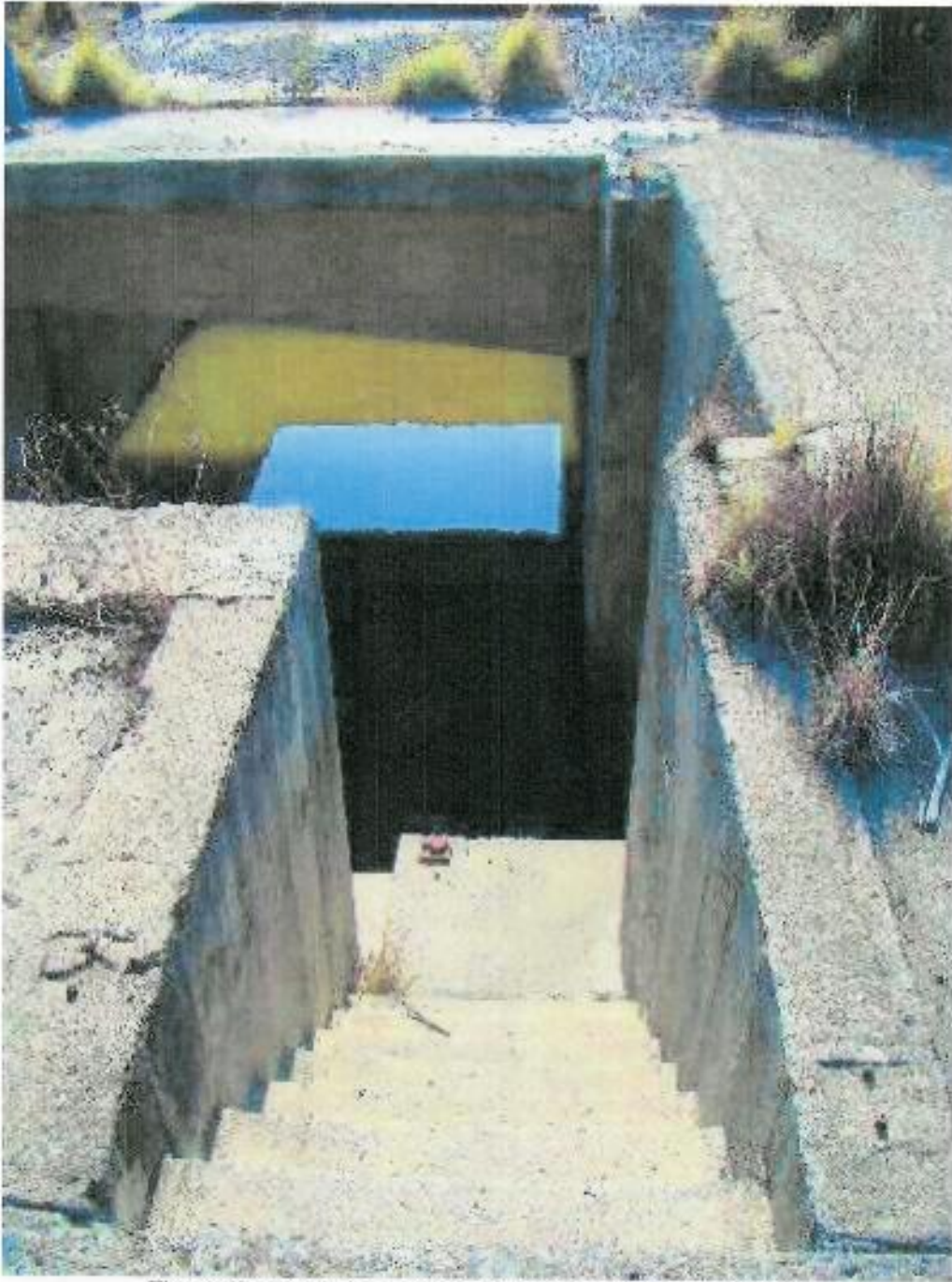
**Figure 66: Detail of above-ground structures at Washing Plant (2)**



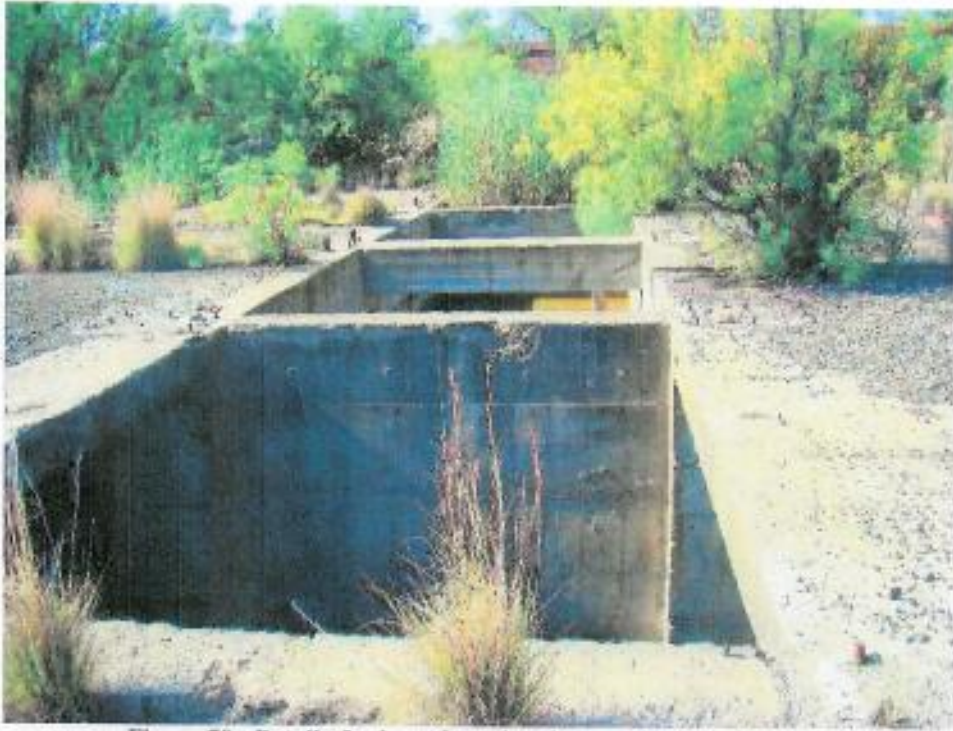
**Figure 67: Detail of above-ground structures at Washing Plant (3)**



**Figure 68: Detail of above-ground structures at Washing Plant (4)**



**Figure 69: Detail of sub-surface chambers at Washing Plant (1)**



**Figure 70: Detail of sub-surface chambers at Washing Plant (2)**



**Figure 71: Detail of sub-surface chambers at Washing Plant (3)**



**Figure 72: Detail of metal fixtures to concrete surfaces at Washing Plant area (1)**





**Figure 73: Detail of metal fixtures to concrete surface at Washing Plant area (2)**



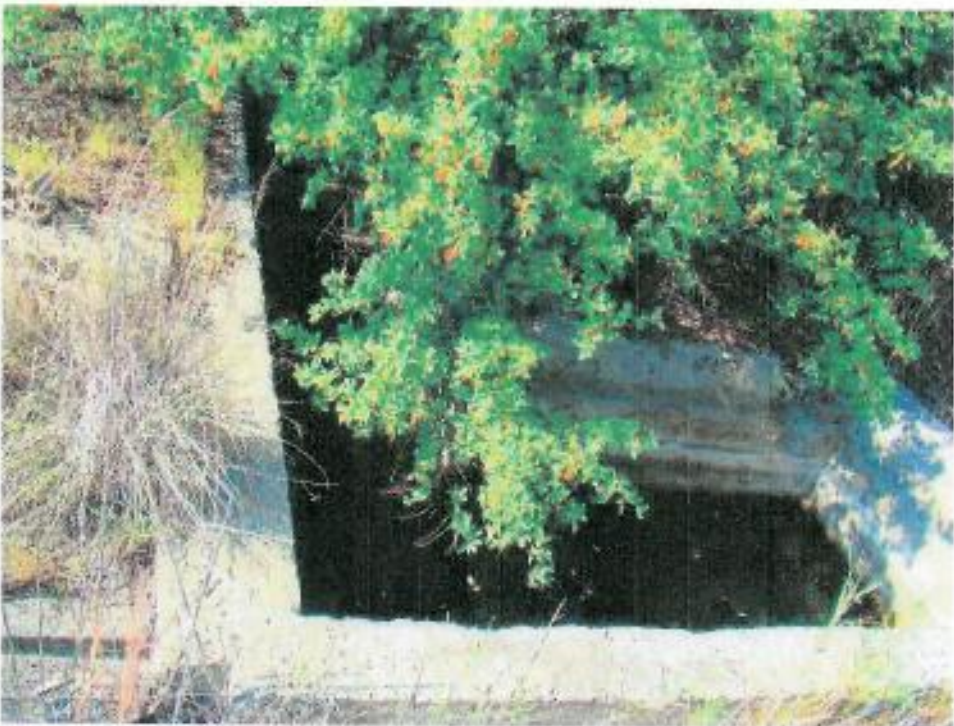
**Figure 74: Detail of metal fixtures to surface of Washing Plant area (3)**



Figure 75: Detail of outlet from Washing Plant area to settlement dams on western side (1)



**Figure 76: Detail of outlets from Washing Plant area to Settlement dams on western side (2)**



**Figure 77: Detail of outlets from Washing Plant area to Settlement dams on western side (3)**



**Figure 78: Debris from Washing Plant area (1)**



**Figure 79: Debris from Washing Plant area (2)**



**Figure 80: Dams in area between Settling Dams and Washing Plant**



**Figure 81: Detail of sunken dam in picture 36 above. Depth unknown.**



Figure 82: Detail of raised dam in picture 36 above - constructed of bricks & mortar and lined with sheets of corrugated iron

The area of the settling dams is on the far left (west) of the washing plant. This area is situated in a ditch that drops from south to north. The only visible part are low concrete "walls", each slightly lower than the preceding one and at the bottom feeds into a canal/pipe that leads to the No 2 drain which in turn runs from a north-western to south-eastern direction to the power station dam east of the compound. The area of the settling dams is overgrown with grass rooted in a layer of soil similar to that found in the slime dam areas and it could not be determined whether there are any sub-surface chambers not visible to the naked eye and that the concrete walls are not in fact the only visible part of underground chambers. No detailed plans could be obtained from the archives on this portion of the plant either. (See pictures 83 & 84 below for this area).

## **Settling Dams**



**Figure 83: Surface area of settling dams (south-easterly orientation). Office building to the left and portion of Native Hostel (Compound) to the back of that**



**Figure 84: Surface area of the settling dams area (north-easterly orientation) (2)**



## **Offices**

The Office at the Washing Plant, Engineers Offices adjacent the Crusher area, Change House and adjoining Shaft Offices as well as the Study Office right against the wall on which the Number 2 drain runs are all constructed of bricks and mortar and were not demolished when the mining structures were dismantled. The buildings are, however, in various stages of disrepair and the corrugated iron roof sheets seem to have been removed (or looted according to the caretaker of the area).



**Figure 85: Offices in Washing Plant area (north-easterly orientation)**



**Figure 86: Eastern entrance of offices at Washing Plant area (western orientation)**



**Figure 87: Interior of offices at Washing Plant area (1)**



**Figure 88: Interior of offices at Washing Plant area (2)**

## **Cooling Dam**

The areas of the cooling dam, boilers, rock shaft plant and riggers were all demolished and only foundations remain.



**Figure 89: Cooling Dam**

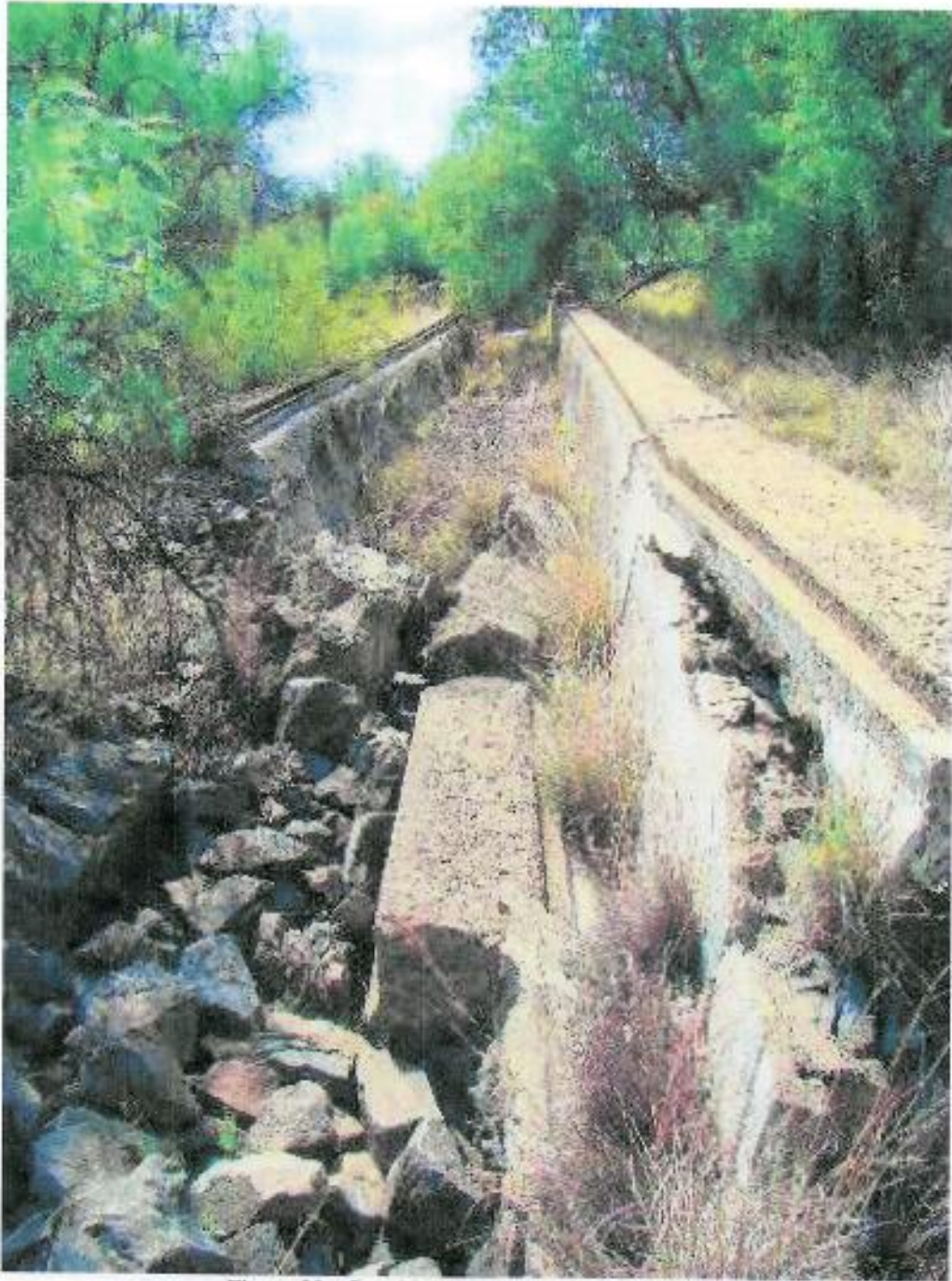


Figure 90: Canal leading to the Rock Shaft area

## **No 2 Rock Shaft Spray**

(This structure is situated in the top left corner of the map of remaining structures in Mine Area A on page 93, i.e. north-west of the treatment plant)



**Figure 91: Cement Structure which probably served as foundation for the shaft gear (Modern Tailings Dump in background). Orientation south-west.**



**Figure 92: As above (orientation north-west)**





Figure 93: Identification of structure affixed to rail

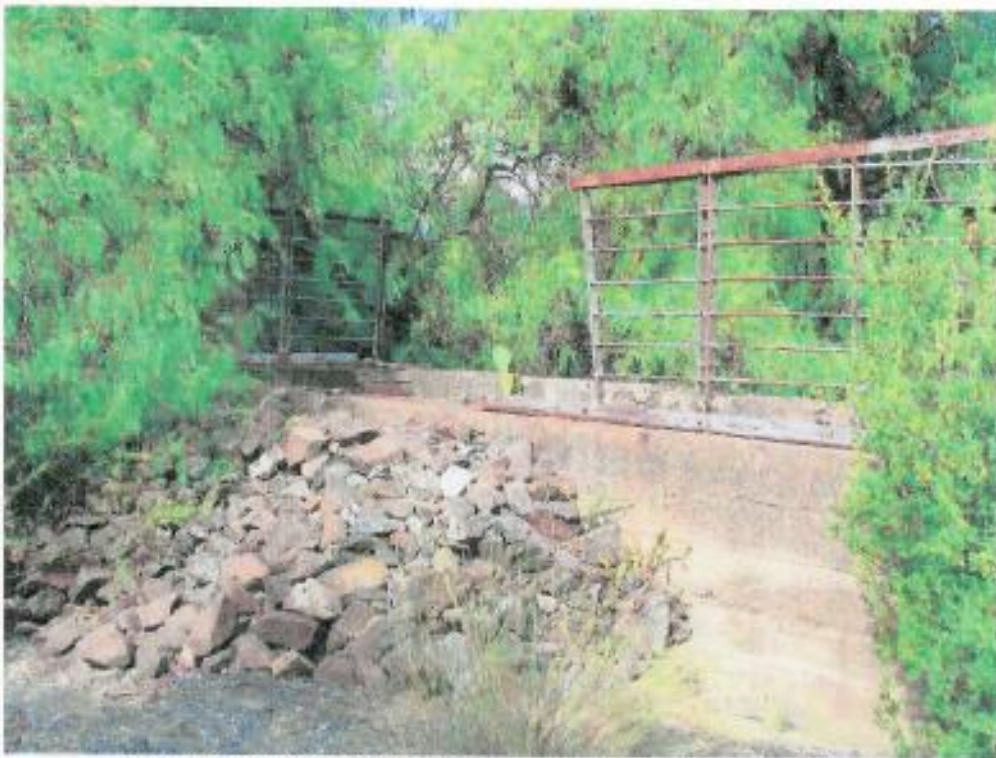
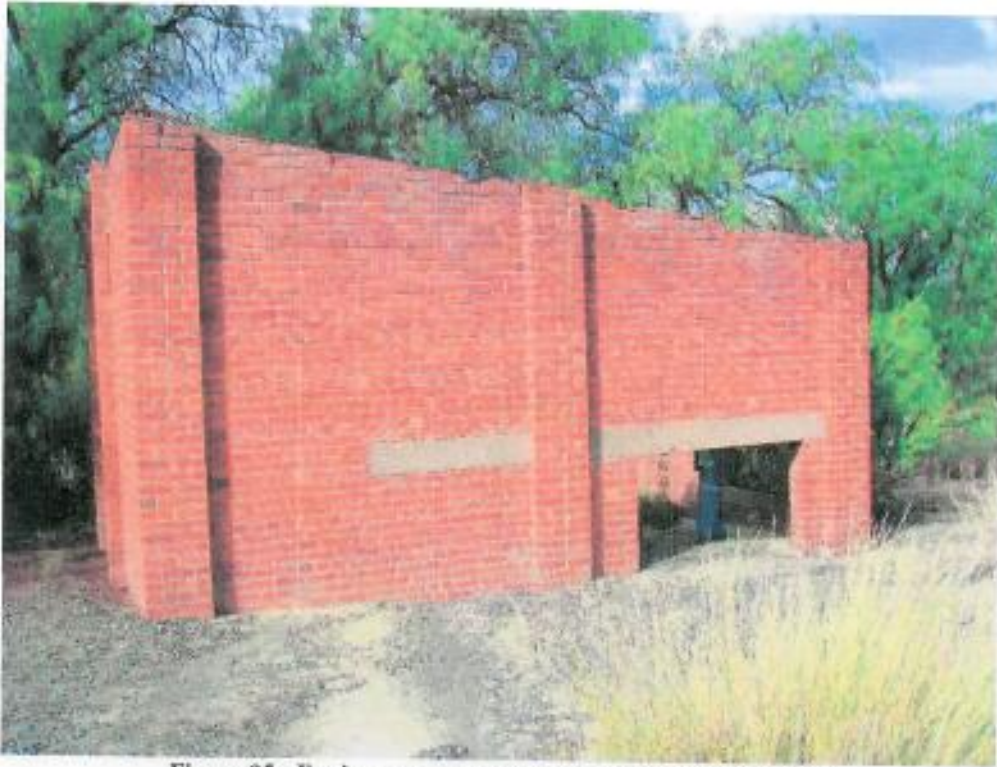
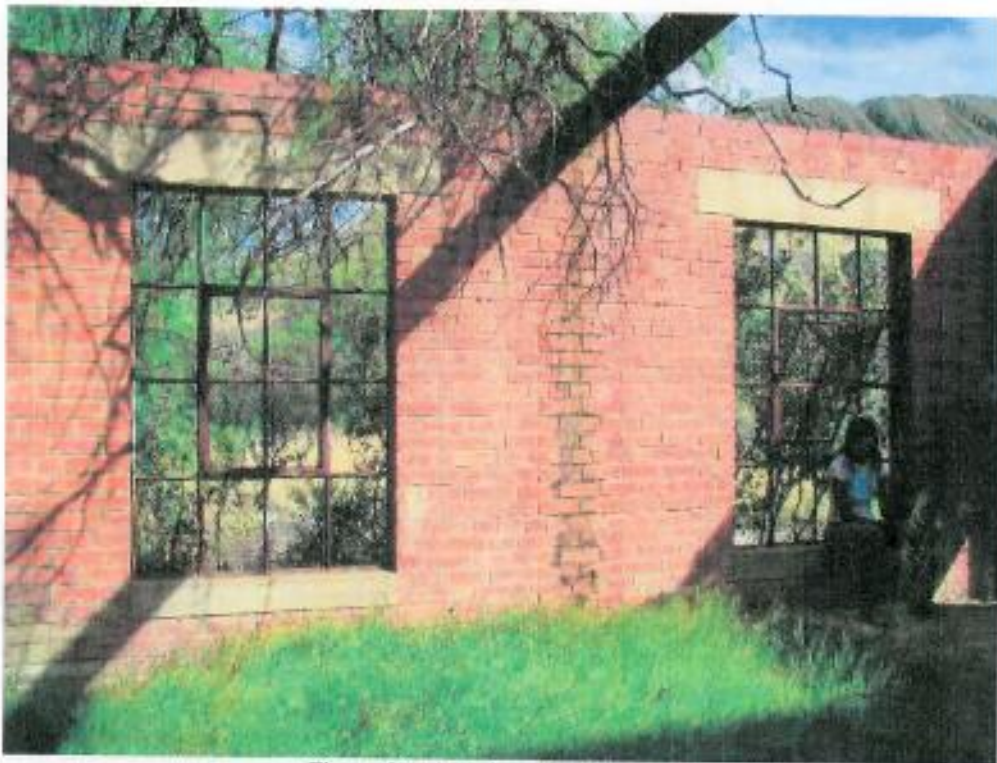


Figure 94: Debris of dismantled structure on top of cement platform



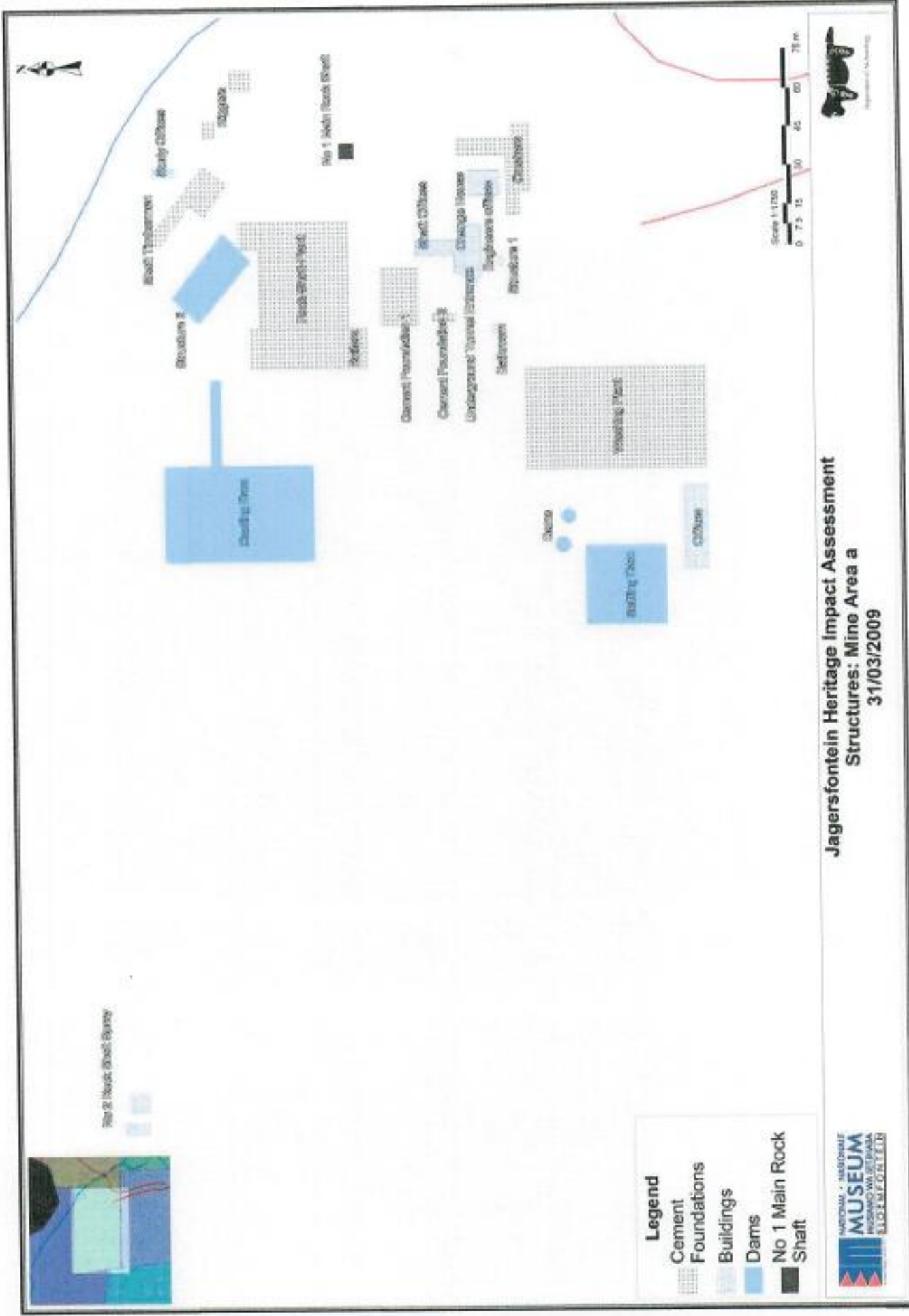
**Figure 95: Engine room on eastern side of cement platform**



**Figure 96: Interior of engine room**

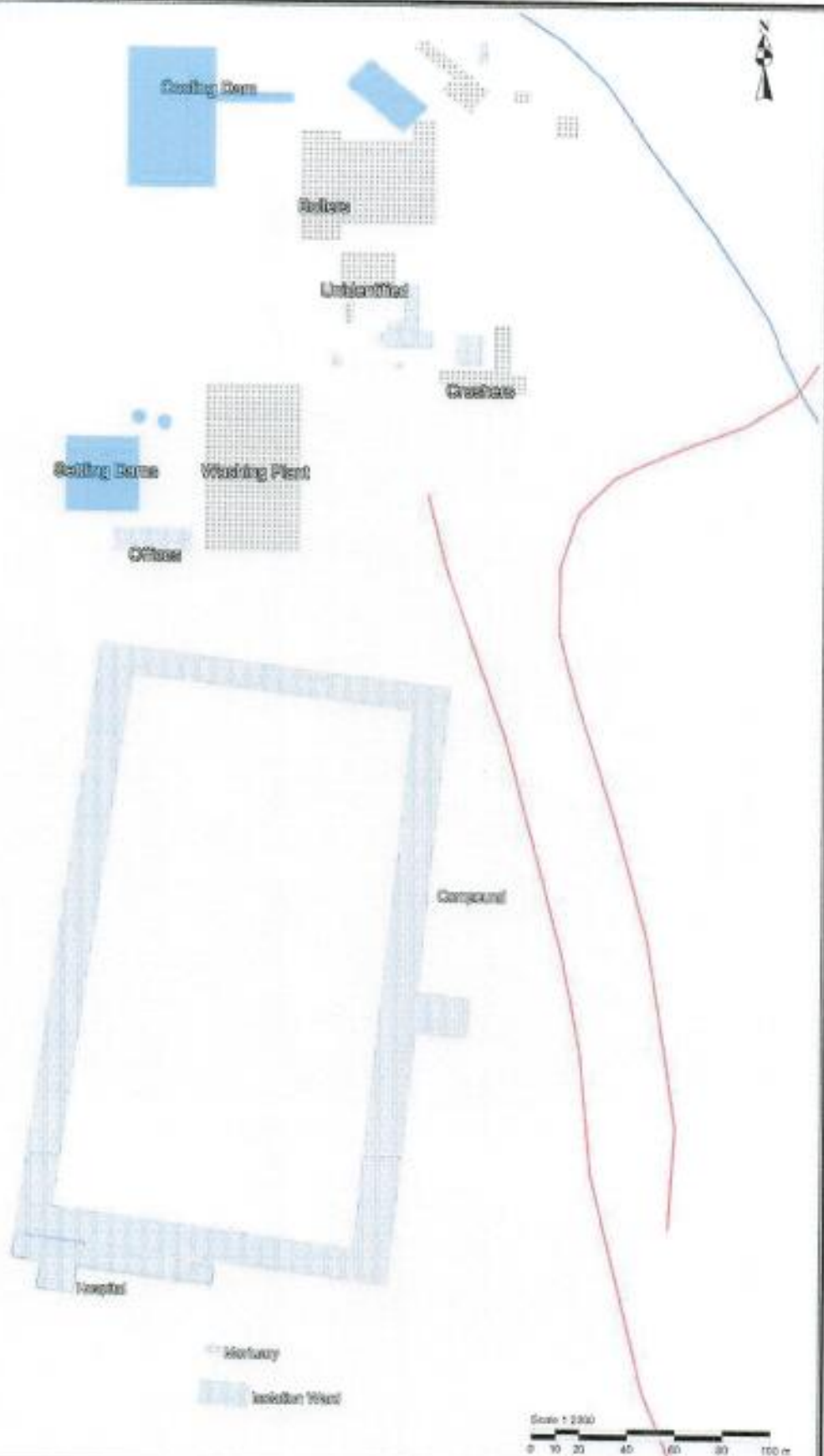


**Figure 97: Interior of western wall of engine room – metal beam that connected the engine room with the shaft**



Jagersfontein Heritage Impact Assessment  
 Structures: Mino Area a  
 31/03/2009





- Legend**
- Cement Foundations
  - Buildings
  - Dams



**Jagersfontein Heritage Impact Assessment  
Compound with surrounding structures  
31/03/2009**

