

Senior Officials' Houses



Figure 414: House 2 on Mine Square Map

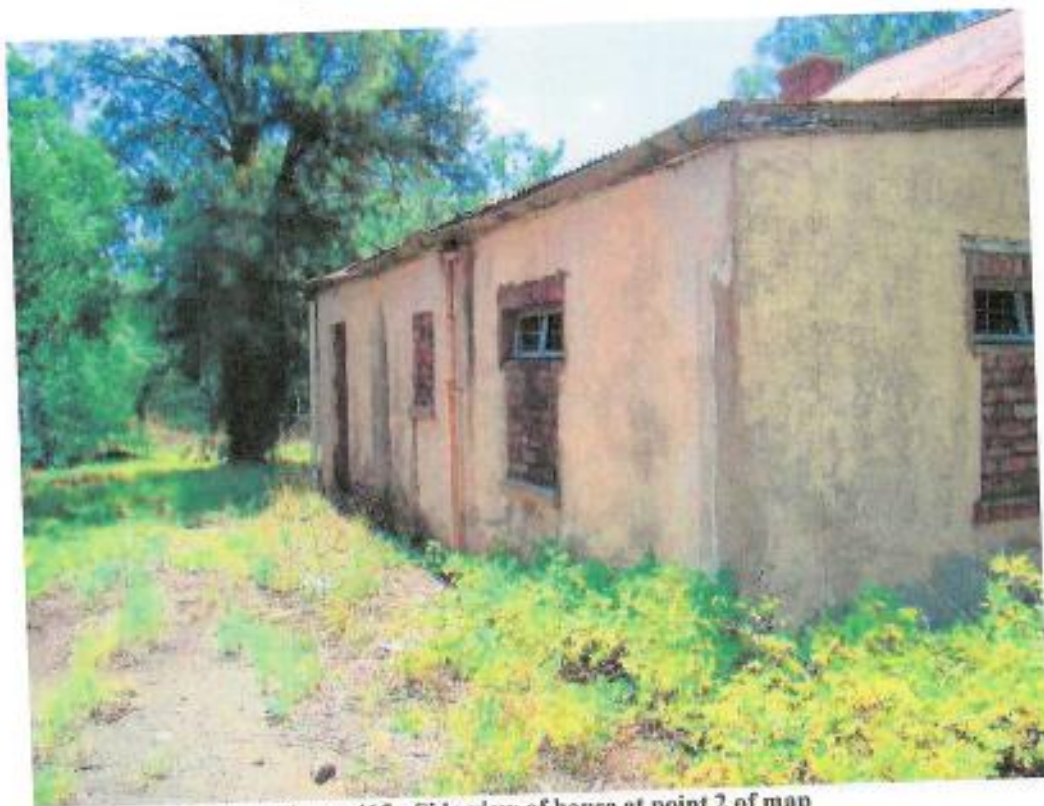


Figure 415: Side view of house at point 2 of map

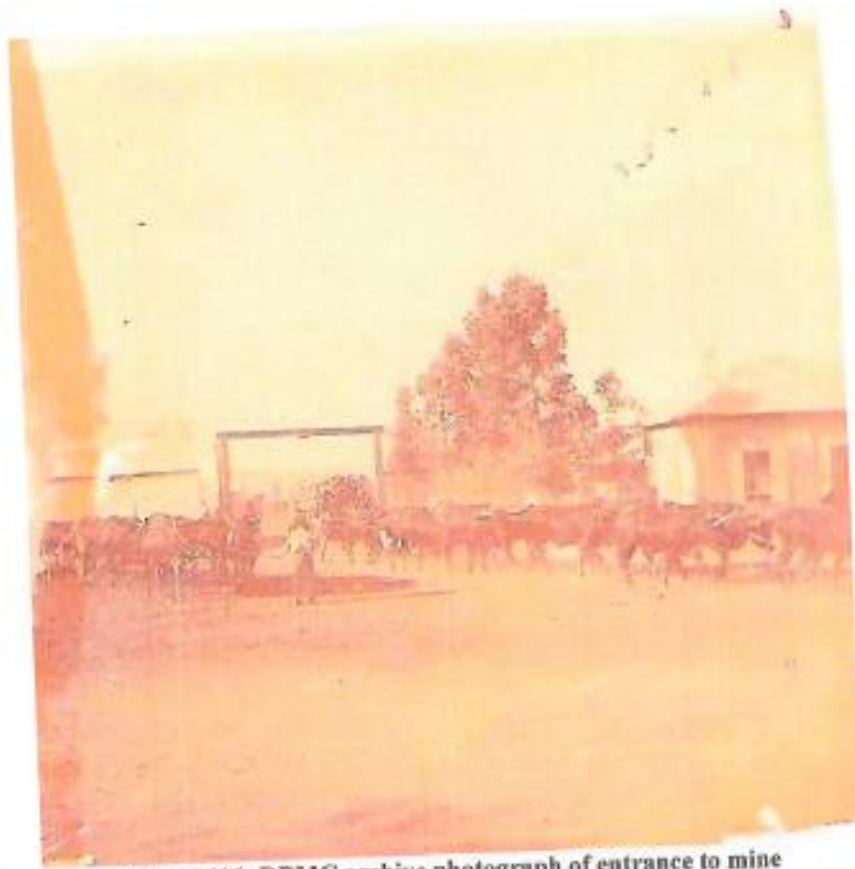


Figure 416: DBMC archive photograph of entrance to mine



Figure 417: Side view of building at position 2 on map with mine gate visible to the left (This is most likely the same building on the right hand side in the archive picture above.)



Figure 418: House 3 on Mine Square Map



Figure 419: House 4 on Mine Square Map



Figure 420: This semi-detached structure (i.e. two houses) are currently being utilised as creche (Refer to position 12 on map)

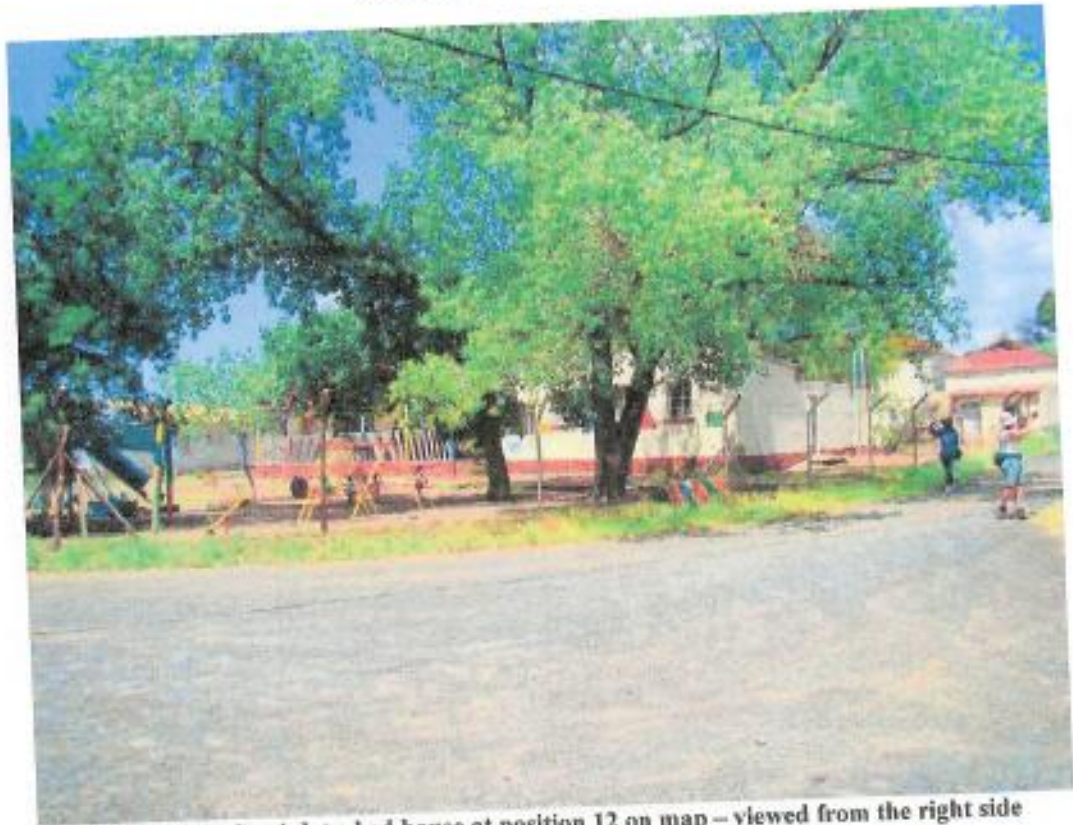


Figure 421: Semi-detached house at position 12 on map – viewed from the right side



Figure 422: Right side of semi-detached house (Position 13 on map)



Figure 423: Full view of semi-detached house (positions 13 and 22 on map)



Figure 424: House at position 14 on map. This house is considerably bigger than the others and might have belonged to a person more senior than the other senior officials

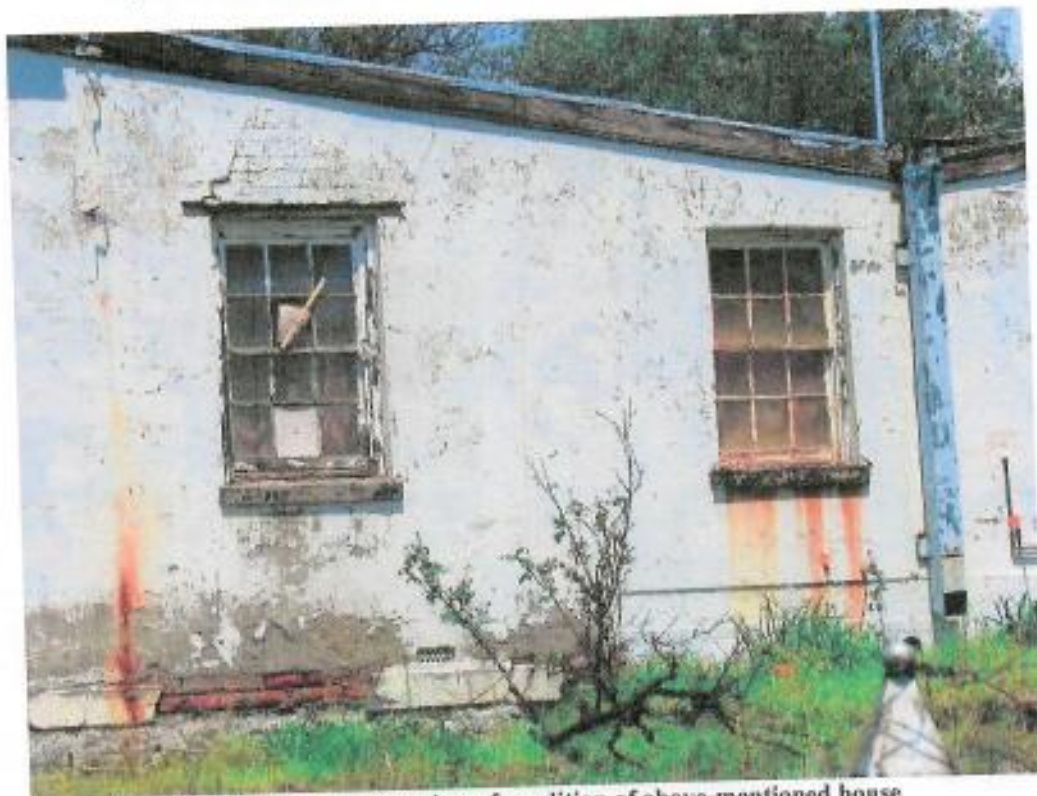


Figure 425: Close-up view of condition of above-mentioned house



Figure 426: The houses at positions 15 and 16 on the map are once again two semi-detached houses



Figure 427: Right-side house of above-mentioned semi-detached house (position 16 on map)



Figure 428: House at position 17 on map



Figure 429: House at position 18 on map



Figure 430: House at position 19 on map



Figure 431: House at position 20 on map



Figure 432: Back view of house at position 20 on map



Figure 433: Outbuildings at the back of house at position 20 on map



Figure 434: House at position 23 on map (Meteor Street)



Figure 435: House at position 24 on map (Meteor Street)

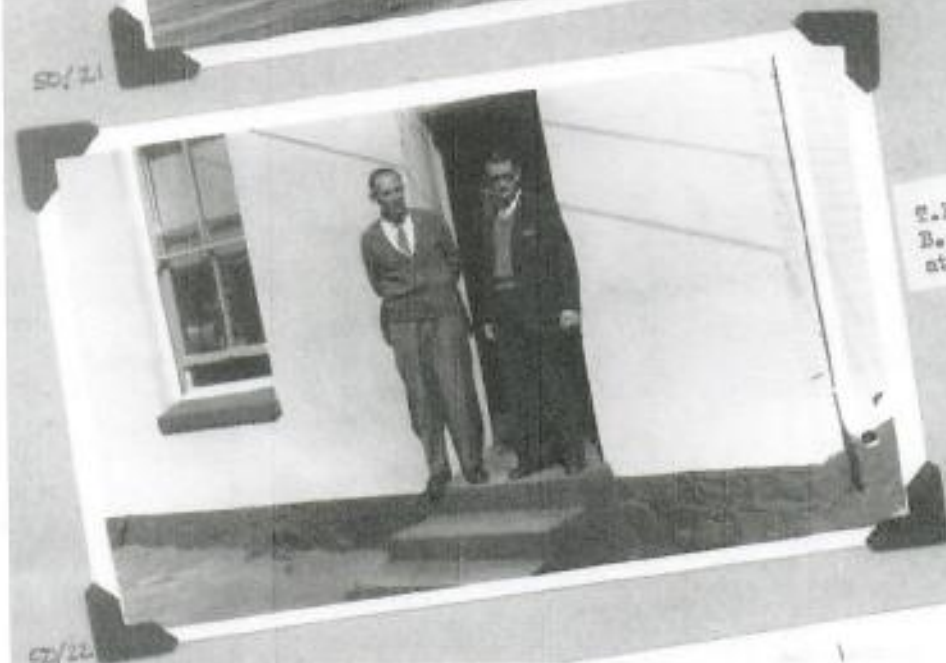
Mine Buildings

- **Head Office**
- **Survey Office**
- **Engineers' Office**
- **Unidentified building 1**
- **Unidentified building 2**

DE BEERS CONSOLIDATED
MINES LTD
JAGERSFONTEIN MINE
GENERAL OFFICE



50/21



E.N. Green and
B. van Deventer
at Survey Office

50/22

Figure 436: Head Office and Survey Office



Figure 437: Head Office Building - front entrance (Position 6 on map)



Figure 438: Head Office Building - western flank



Figure 439: Head Office Building - side view (western)



Figure 440: This building is currently utilised as job creation centre, Glaas Studio. (Northern view)



Figure 441: Survey offices - situated to the left of Head Office (Position 5 on map)

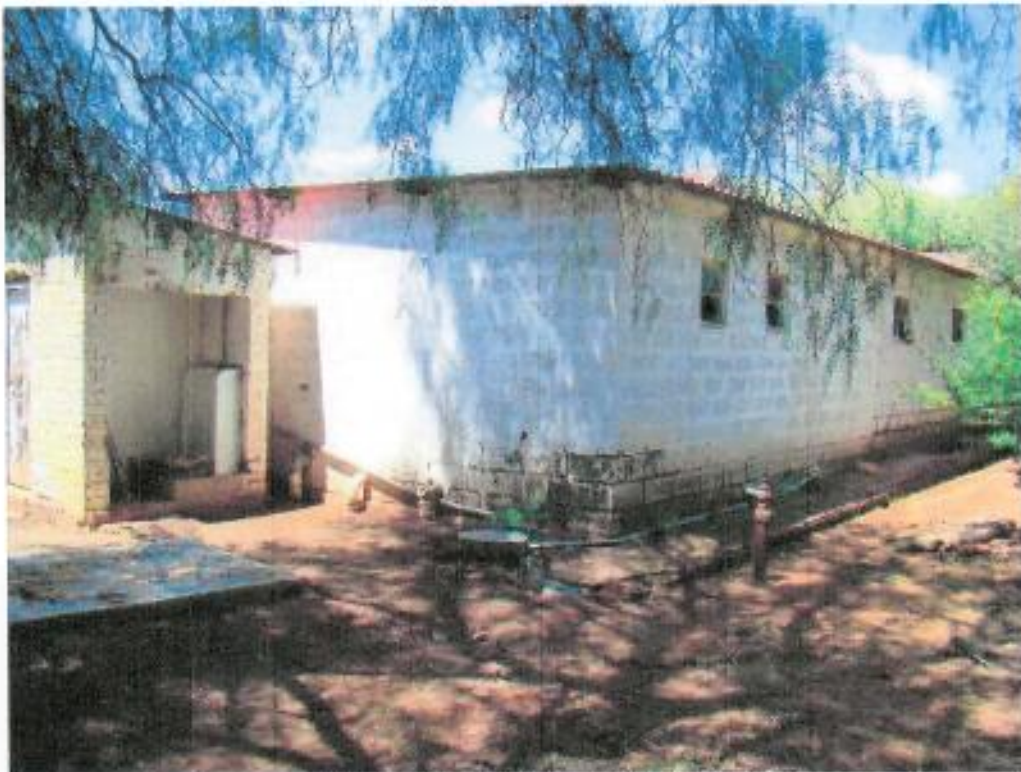


Figure 442: Back of Survey Office



Figure 443: Engineers Office as viewed from the mine entrance gate (This building is inside the mining area)



Figure 444: Southern side of Engineers Office

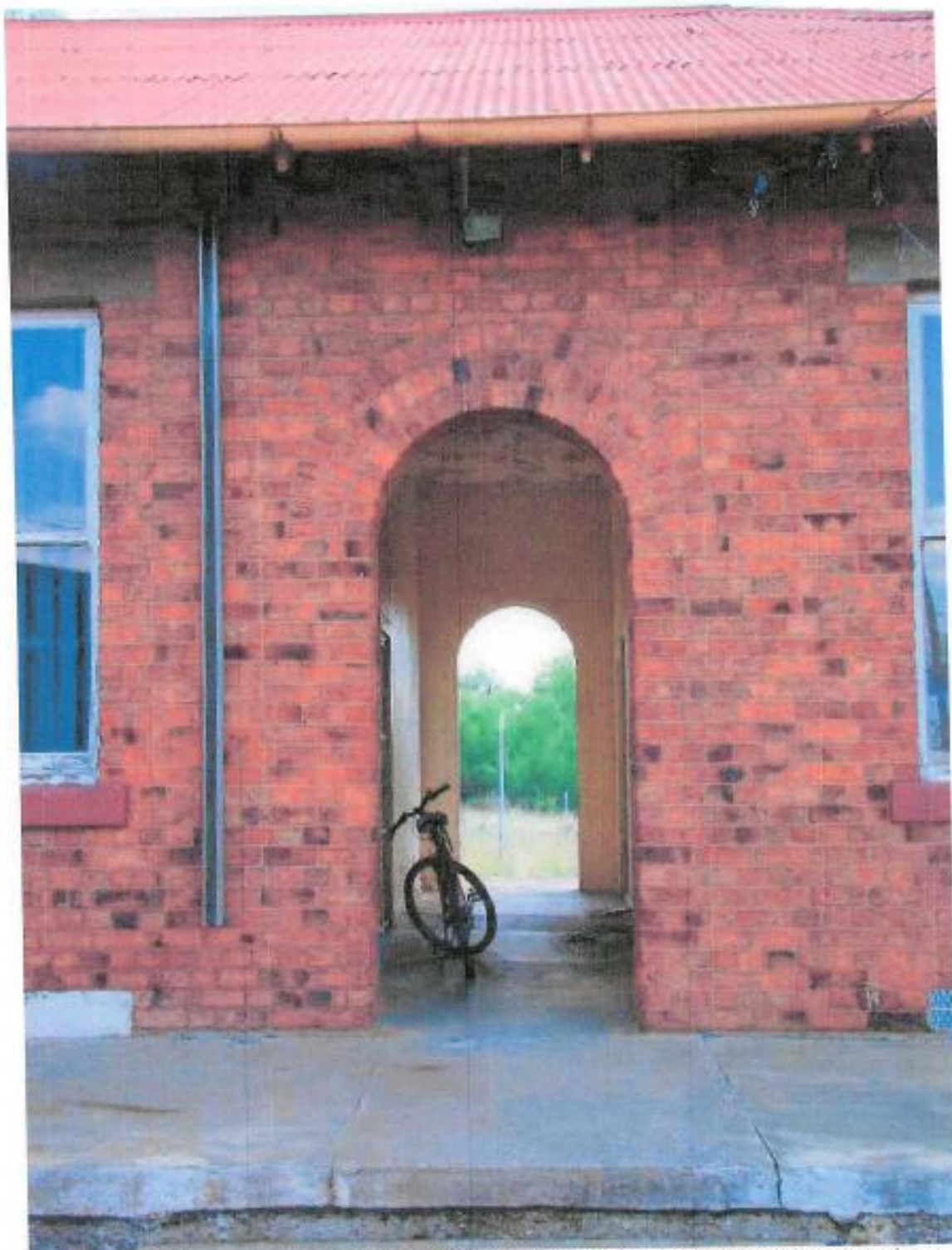


Figure 445: Open passage in middle of Engineers Office, dividing the building into two sections



Figure 446: Interior of Engineers Office. This building is currently utilized as Liaison Officer/Caretaker Office (De Beers)



Figure 447: Interior of Engineers Office (2)



Figure 448: Bridge leading to unidentified structure no 25 on map on southern side of Engineers Office

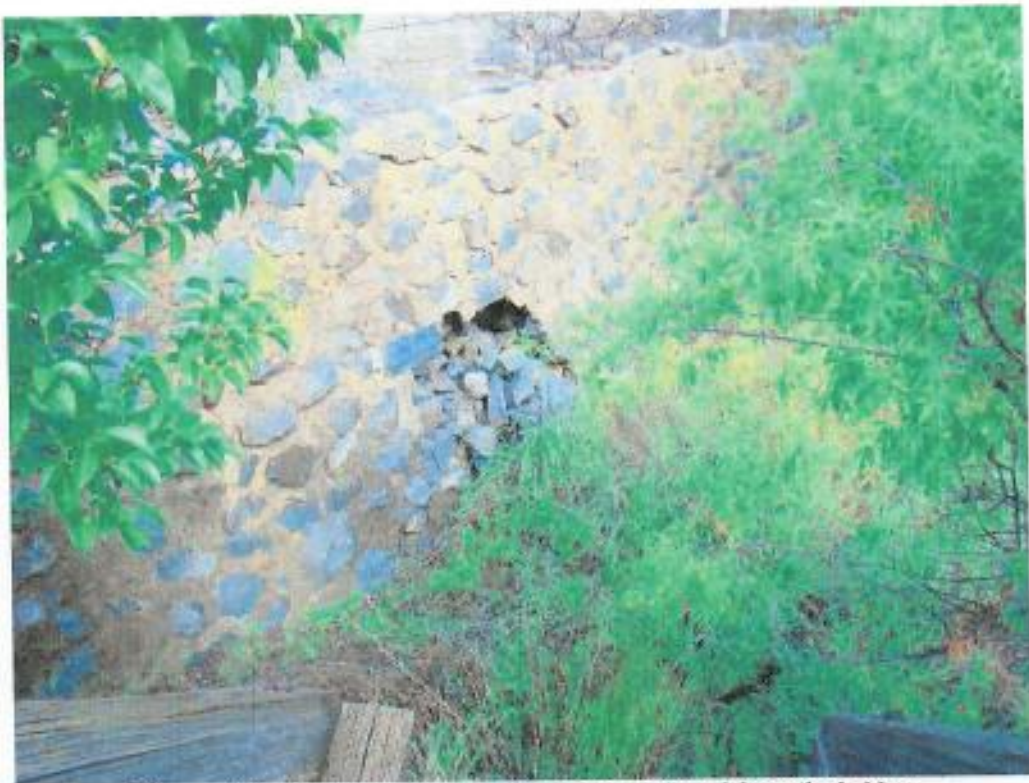


Figure 449: Retainer wall on northern side as viewed from the bridge



Figure 450: Unidentified building (no 25 on map)

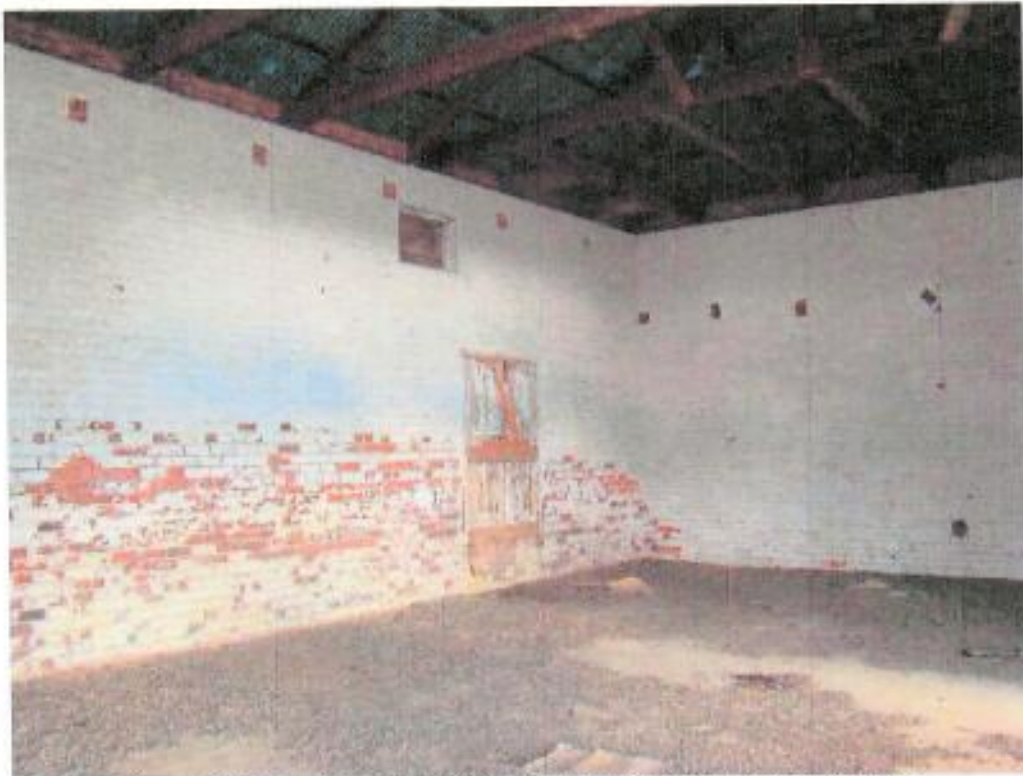


Figure 451: Interior as viewed from door encircled in photograph above



Figure 452: Northern side of unidentified structure

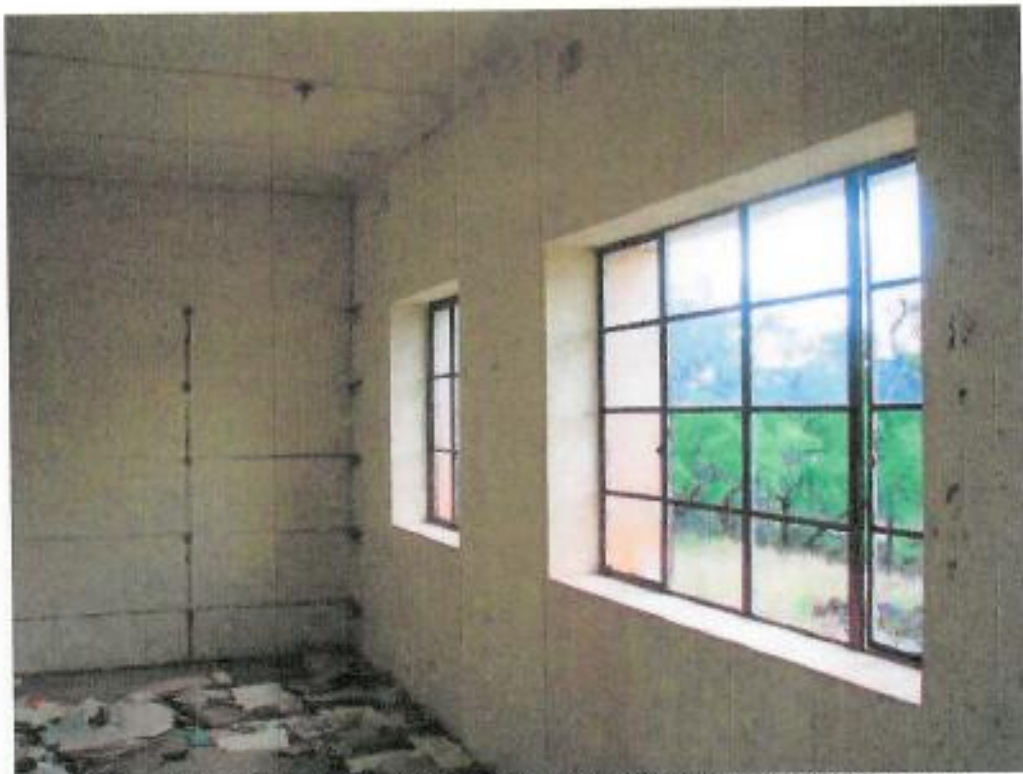


Figure 453: The door (small) in the photograph above leads to this small room



Figure 454: The wide door in figure 452 leads to a large open area with a smaller alcove on the right hand side (see photograph below)

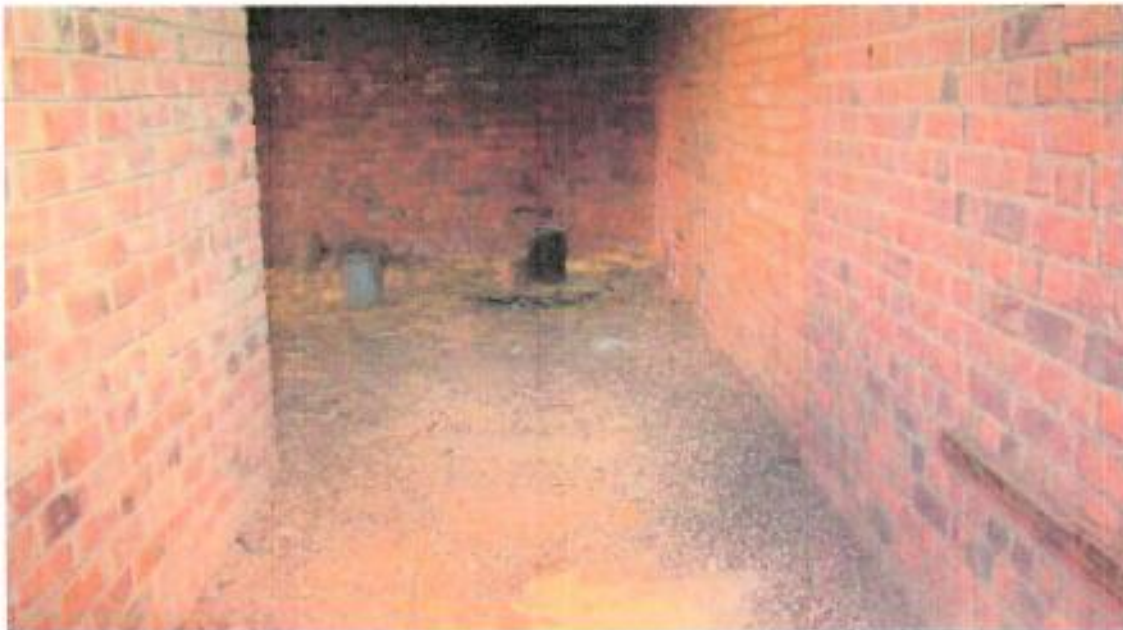


Figure 455: Small alcove mentioned above. The left side wall is the back wall of the small room in photograph 453



Figure 456: DBMC archive picture of the entrance to the mine

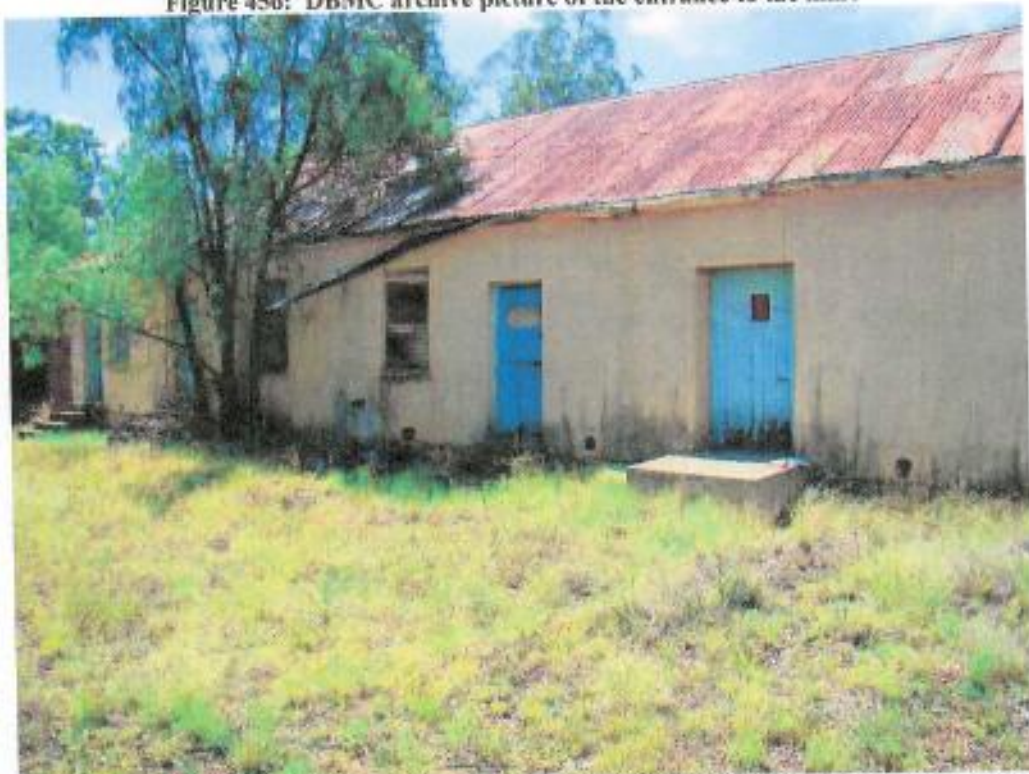


Figure 457: This is the building (position 1 on map) that is visible behind the trees on the above archive photograph



Figure 458: Unidentified structure indicated as mine building on earlier maps (see position 1 on map)

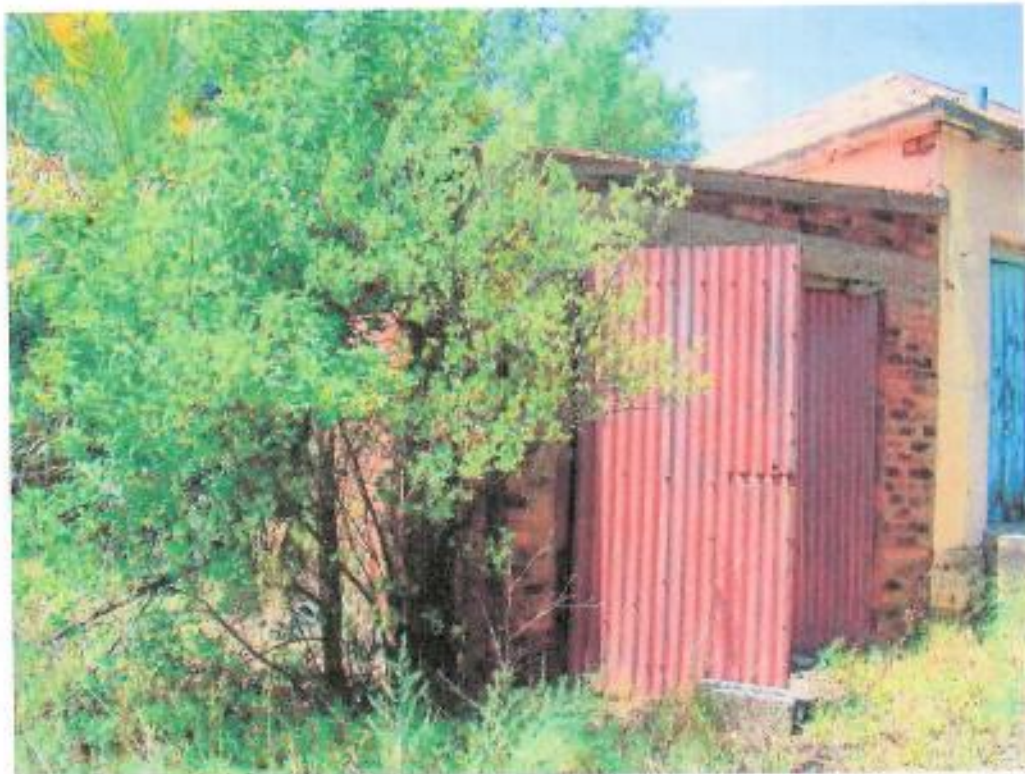
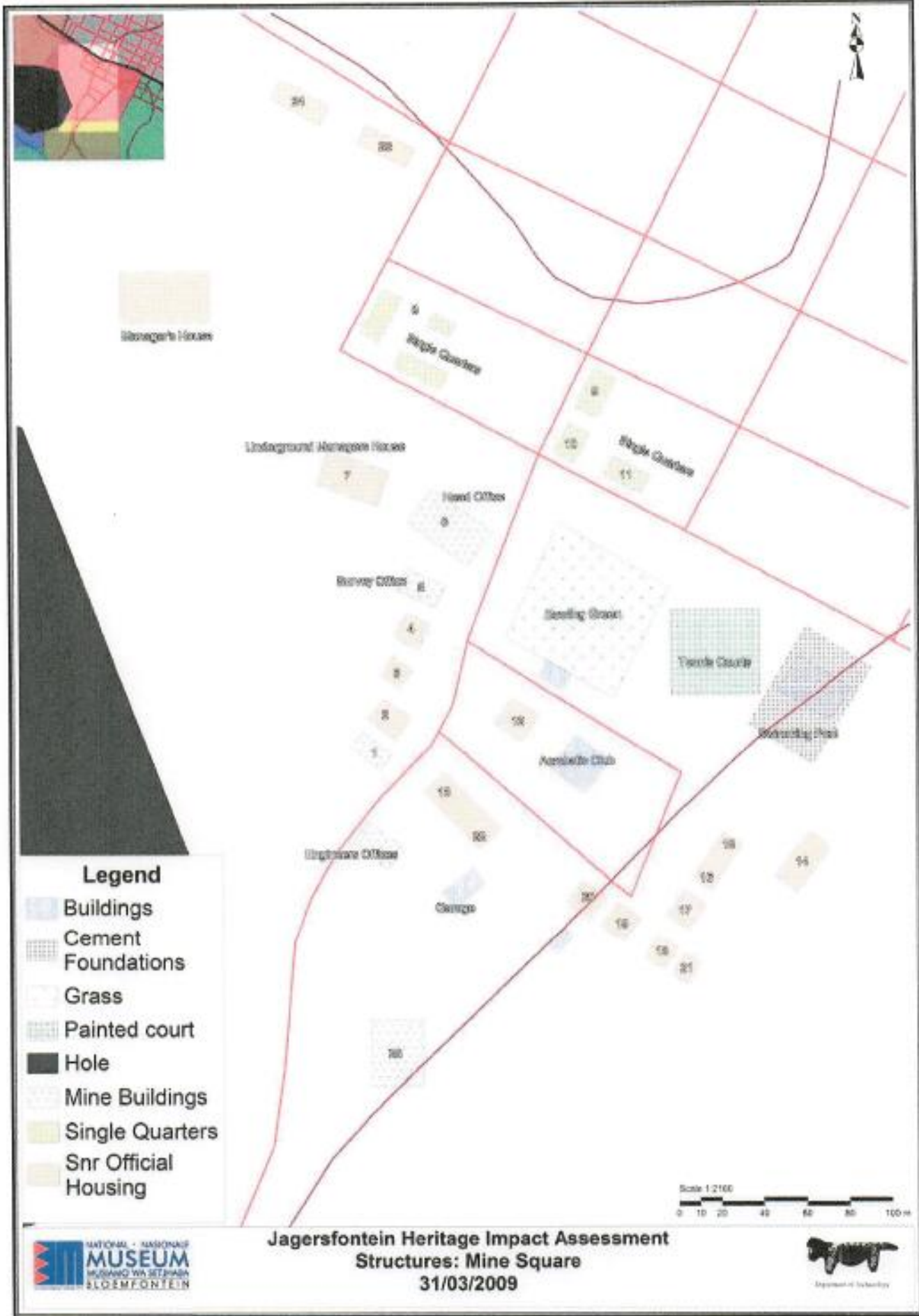


Figure 459: A lean-to on the western side of above-mentioned building seems to be a later addition



5.3.2.10 Charlesville



Figure 460: DBMC archive aerial photograph of Charlesville

Charlesville was built by De Beers Consolidated Mining after the mine was not able to secure enough housing for its workers in the town of Jagersfontein itself. The layout of the town is in the form of a diamond and originally consisted of 145 houses each with a lounge, dining room, kitchen, bathroom, toilet and three bedrooms. The original houses were fitted with coal stoves and all were supplied with electricity, fresh water and flush sanitation.

The garages are not on the same erven as the houses but erected in clusters of 8 in communal areas adjacent each group of houses. These garages were constructed of either wood or corrugated iron and are all in poor shape today. The houses, however, seem in fairly good condition.



Figure 461



Figure 462: The roads are still unpaved today



Figure 463: Houses not currently occupied are busy going to ruin



Figure 464: Wooden communal garages



Figure 465: Corrugated iron communal garages



Figure 466: Junior Playground

6. Summary of findings:

Due to the diverse nature of mining in general and the nature of diamond mining in particular, as well as the fact that the history of Jagersfontein is intrinsically interwoven with that of the mine, the archaeological material and sites recorded during the survey fall into at least nine different categories. The open pit mine is afforded a category of its own because it is not only purported to be the biggest manmade hole in the world but also the first site in the world where "dry bed" diamonds were found and mined. The heritage factors are categorized as follows:

- Open Pit Mine
- Mining related structures and features (e.g. plant, dams, airfield, etc.)
- Mining related buildings within the mining area (e.g. offices, support service buildings such as the fitter shop, etc)
- Compound (native hostel)
- Historical buildings and structures (e.g. remains of a mudstone farmstead, a stonewalled "farmstead", a stonewalled "cavalry" area, a dam wall, the Diggers' hospital, etc)
- Mining village (Charlesville)
- Town Square (offices, houses and recreational area within Jagersfontein town)
- Stone Age sites
- Graveyard

The Stone Age artefacts and sites component seems to be distributed mostly at the central and western parts of the surveyed areas. Very few actual sites were recorded and isolated artefacts are found over most of the area. None of the surface artefacts were in primary context, mostly on account of earlier mining activities.

An historic farming component is represented by one mudstone structure and its associated midden(s), a stonewalled dam and one stonewall enclosed area and its associated midden(s) that might also be the result of mining activities. It is assumed that the mudstone structure is the original farmhouse whereas the stonewalled structure might have been an earlier "floors" compound for native mine workers but has a general lay-out of a typical farmyard of the late 1800's. Whether it is one or the other, both would date to the late 1800's. No conclusive proof could be found which of the two areas would be the original farmhouse. The original farmhouse was during the late 1800's used as government offices for the mine inspector (who also served as officer of law) and as such would have a connection with the mine in any case.

A second historic component is the Diggers Hospital which has a direct link to the mining activities. All that remains of the hospital is the portion that was the nurses' home of the original hospital as well as a portion of a later edition to the hospital complex that up to recently was used as the "Moth hall" but is currently

no longer in use. The original nurses' home is, however, still intact in spite of several unsightly seemingly make-shift additions in later years (not related to the mine).

A third historic component is a stone-walled structure *pro tem* labeled as the "cavalry" area. The name "cavalry" might be a misnomer but from the remains and information that a large amount of horse shoes were over the years removed from this locale it is assumed that this area could at some stage have served as stable for the horses during at least the early phase of the mine when extensive use was made of horses for a variety of reasons.

The graveyard is of unknown origin and quite extensive in size – possibly +300 graves. It seems to have two distinct sections with the smaller section being laid out in two "neat" rows and separated from the larger portion of the graveyard by a row of packed stones. This part of the graveyard might be connected to the Anglo-Boer War judged by the typical British iron crosses on a few of these graves (although with a slight difference). The larger portion has no order to it and is it consequently not possible to determine which stones are headstones and which are not (since no formal headstones were used). It is possible that all of these graves are shallow judged by the protrusion of corrugated iron sheets (normally placed over the coffin before the hole is filled up with soil) from some of the graves in the smaller section and evidence of human bones lying at the surface of one grave where some animal burrowing took place in the larger section of the graveyard.

Mining related structures/features include mine dumps, the open pit mine, the airfield, buildings associated with mining activities such as the plant and riggers, the floors, etc. Not much is left of the airfield other than a small corrugated iron structure that could have served as bathroom and the gravel landing strips running at a 90 degree angle to each other in a west/east direction and a north/south direction. The majority of mining structures such as the plant were broken down and all that remain are the concrete foundations – refer to recommendations below for further comments on this.

The open pit mine is of specific importance due to its prominent place in the history of diamond mining, not only in South Africa but the world at large. This area is currently fenced off and a platform erected on the northern side from where visitors can view the open pit mine. Access is by appointment only and visitors need to be accompanied by an appointed guide. The stability of the side walls is apparently also constantly monitored.

Mining related buildings within the mining area includes office buildings and a variety of workshops. These buildings are all in a very poor condition with some only the foundation remaining. Refer to recommendations below for further comments on this too.

Several houses in Charlesville are currently not occupied. This mining town which was constructed by De Beers for its workers was completed in 1949 and as such falls within the 60-year clause [NHRA 34(1)] by a very narrow margin. Charlesville is by no means unique in its example as mining town since there are several similar towns in South Africa which are not only older but also at a much bigger scale, e.g. the copper mining towns of Nababeep, O'Okiep and Carolusberg in the Northern Cape. Its heritage value should be weighed against the older mining related structures in Jagersfontein in order to make an informed decision as to whether it should be preserved or not. For the purpose of this report it is sufficient to note that the town is currently protected under section 34(1) of the National Heritage Resources Act, no 25 of 1999, but that its heritage value is determined within the bigger scope of the area itself (refer to table 3). It is recommended that a heritage architect confirms this rating before any action is taken based on this report.

The compound and mine square forms an important part of the early history of the town itself and cannot be viewed as separate from that. The majority of the buildings in the mine square, in spite of most of them being utilized and/or occupied, are in urgent need of repair and maintenance. The compound (native hostel) within the mining area is also fast deteriorating and subject to looting and requires protection to ensure the possibility of mitigation and/or preservation.

Although the demolishing and/or removal of portions of certain mining structures were in accordance with section 40 of the old Minerals Act (no 50 of 1991) and took place before the implementation of the new Mineral and Petroleum Resources Development Act (no 28 of 2002) in 2004, the remainder sections (i.e. the foundations) of these structures that were not removed at that time are protected under both the new law mentioned above as well as the National Heritage and Resources Act currently in place. Many of these, however, are dangerous (e.g. the underground chambers of the washing plant area) in that no provision is made to prevent any animals or humans accidentally falling into it. Although it falls within the larger restricted area which is fenced off, the area is not sufficiently guarded to ensure that no-one enters the area illegally. The fact that looting of corrugated iron sheets from the roofs of standing structures was reported confirms this. The fencing is not sufficient to prevent the movement of smaller animals and even larger animals will be able to get to it on account of the fact that the fence is not in all places secure. Mitigation on these areas should enjoy priority and until that is completed it is recommended that open structures/pits should be sufficiently secured to prevent any accidents.

It should be stressed that none of the above should be viewed or treated as individual components but rather approached in a holistic way as different components of a whole. As mentioned before, the history of the town of Jagersfontein (to include Charlesville) is inherently interwoven with the history of the mine and the two concepts should also not be separated in terms of the bigger picture in determining the heritage value of the area.

6.2 Statement of Significance (Heritage Value)

The area is of significance in terms of its potential to yield information that will contribute to an understanding of South Africa's cultural heritage as described in NHRA, section 3 (3) (Table 1). In particular this area lays claim to be the first site of discovery AND mining of "dry bed" (i.e. non-alluvial) diamonds in the world, is purported to be the site of the biggest manmade hole in the world (in spite of the claims that Kimberley hole actually holds that record), contains valuable information regarding the mining history of South Africa with particular reference to diamond mining, is the site where two of the world's largest diamonds were discovered, is of importance to the history of development in the Free State.

Table 1: National Heritage Resources Act no. 25 of 1999, Section 3 (3).

(3) Without limiting the generality of subsections (1) and (2), a place or object is to be considered part of the national estate if it has cultural significance or other special value because of—
(a) its importance in the community, or pattern of South Africa's history;
(b) its possession of uncommon, rare or endangered aspects of South Africa's natural or cultural heritage;
(c) its potential to yield information that will contribute to an understanding of South Africa's natural or cultural heritage;
(d) its importance in demonstrating the principal characteristics of a particular class of South Africa's natural or cultural places or objects;
(e) its importance in exhibiting particular aesthetic characteristics valued by a community or cultural group;
(f) its importance in demonstrating a high degree of creative or technical achievement at a particular period;
(g) its strong or special association with a particular community or cultural group for social, cultural or spiritual reasons;
(h) its strong or special association with the life or work of a person, group or organisation of importance in the history of South Africa; and
(i) sites of significance relating to the history of slavery in South Africa.

6.2.1 Field Rating:

Explanation of field rating and the recommended grading of each as follows:

Table 2: Field rating and recommended grading of sites (SAHRA 2005)

Level	Details	Action
National (Grade I)	The site is considered to be of National Significance	Nominated to be declared by SAHRA
Provincial (Grade II)	This site is considered to be of Provincial significance	Nominated to be declared by Provincial Heritage Authority
Local Grade IIIA	This site is considered to be of HIGH significance locally	The site should be retained as a heritage site

Local Grade IIIB	This site is considered to be of HIGH significance locally	The site should be mitigated and part retained as a heritage site
Generally Protected A	High to medium significance	Mitigation necessary before destruction
Generally Protected B	Medium Significance	The site needs to be recorded before destruction
Generally Protected C	Low Significance	No further recording is required before destruction

The nine heritage components mentioned in this report can be rated as follows:

Table 3: Field rating of sites mentioned in this report:

Level	Heritage component	Action
National (Grade I) (National significance) preferably World Heritage Site	Open pit mine	Should be nominated to be declared by SAHRA
Provincial (Grade II) (Provincial significance)	Mine Square	Should be nominated to be declared by Provincial Authority
Local Grade IIIA (High significance locally)	Graveyard	The site should be retained as heritage site. Urgent maintenance and management plan for future maintenance required
Local Grade IIIA (High significance locally)	Compound (native hostel)	The site should be retained as heritage site pending results of specialist report from Heritage Architect on soundness of structure.
Local Grade IIIB (High significance locally)	Historical buildings/structures, includes Diggers Hospital, train bridge, "cavalry" area and sites described as mud-brick and stone-wall enclosed "farmsteads" but excludes stonewalled dam	These sites should be mitigated and part retained as heritage site
Local Grade IIIB (High significance locally)	All mining related structures within the mining area related to mining operations but excluding office buildings	These sites should be mitigated and part retained as a heritage site

Generally Protected A	Office buildings within mining area	Mitigation necessary before destruction
Generally Protected B (Provisional rating pending specialist report from heritage architect)	Charlesville	The site needs to be recorded before destruction (should the latter be required on any of the buildings older than 60 years)
Generally Protected C	Stone Age Sites	No further recording is required
Generally Protected C	Stone-wall dam (Historical farming area)	No further recording is required

6.3 Recommendations

Cultural Heritage sites are fragile and can easily be destroyed if sufficient care is not taken during any development or activity in its vicinity. However, the presence of cultural heritage sites does not necessarily mean that no further development can take place. Sites can be mitigated under permit and then destroyed should they not be deemed worthy of conservation (refer to table 3 above).

The entire town of Jagersfontein and its associated mine and mining activities, however, has the potential to be utilized as tourist attraction to a similar fashion as is the case with Pilgrim's Rest in Mpumalanga. Jagersfontein mine is a perfect example of early mining practices and there is sufficient information by means of photographic and other records as well as remaining structures to recreate at least certain facets of the mining history for tourism purposes.

A socio-economic study was done in 1968 prior to the closure of the mine in 1971 in an attempt to determine the effect the closure of the mine would have on the social and economic wellbeing of the town and its inhabitants. In this report it was recommended that Jagersfontein and Fauresmith be combined under one municipality and that the mining town Charlesville be demolished. Then already it was predicted that should these recommendations not be followed, the result would be three struggling small towns. This prediction seems to be true for at least two of these towns, being Jagersfontein and Charlesville. Several attempts have been made since to create some form of economy, to include a brick-making factory utilizing the material from one of the old dumps. None seem to have been successful to date in terms of sustainability and the overall condition of the town suggests a serious lack of economically viable industries and very few employment opportunities for a large portion of its inhabitants. The preservation of the heritage components should, therefore, be weighed against the economic possibilities of other activities such as the mining of the dumps that would improve the economic well-being of the town but not in such a way that it destroys its potential for tourism purposes which also has the potential to boost

the local economy. The following recommendations, therefore, are with this factor in mind.

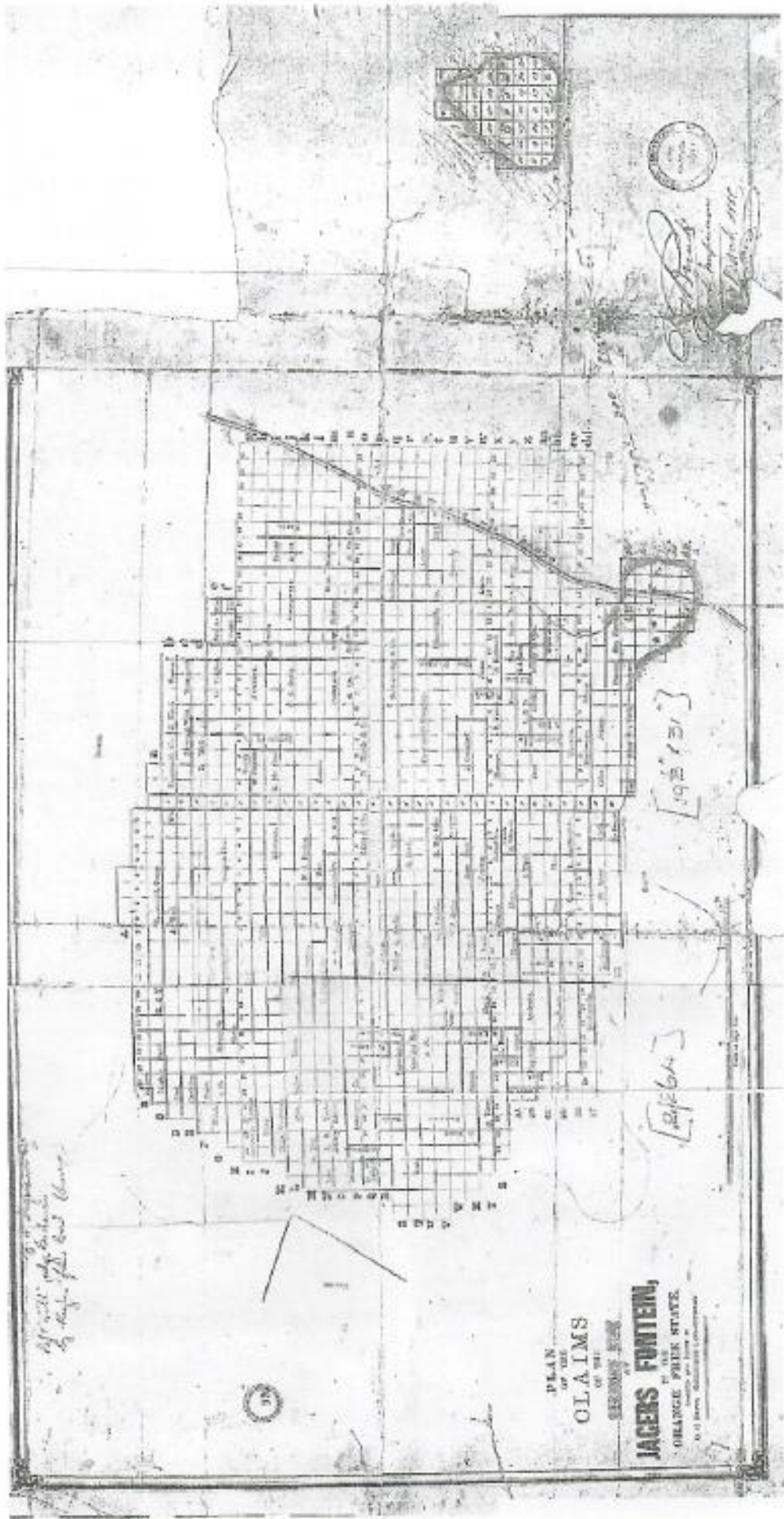
In the case of cultural heritage sites and material recorded during this survey, the following recommendations are made:

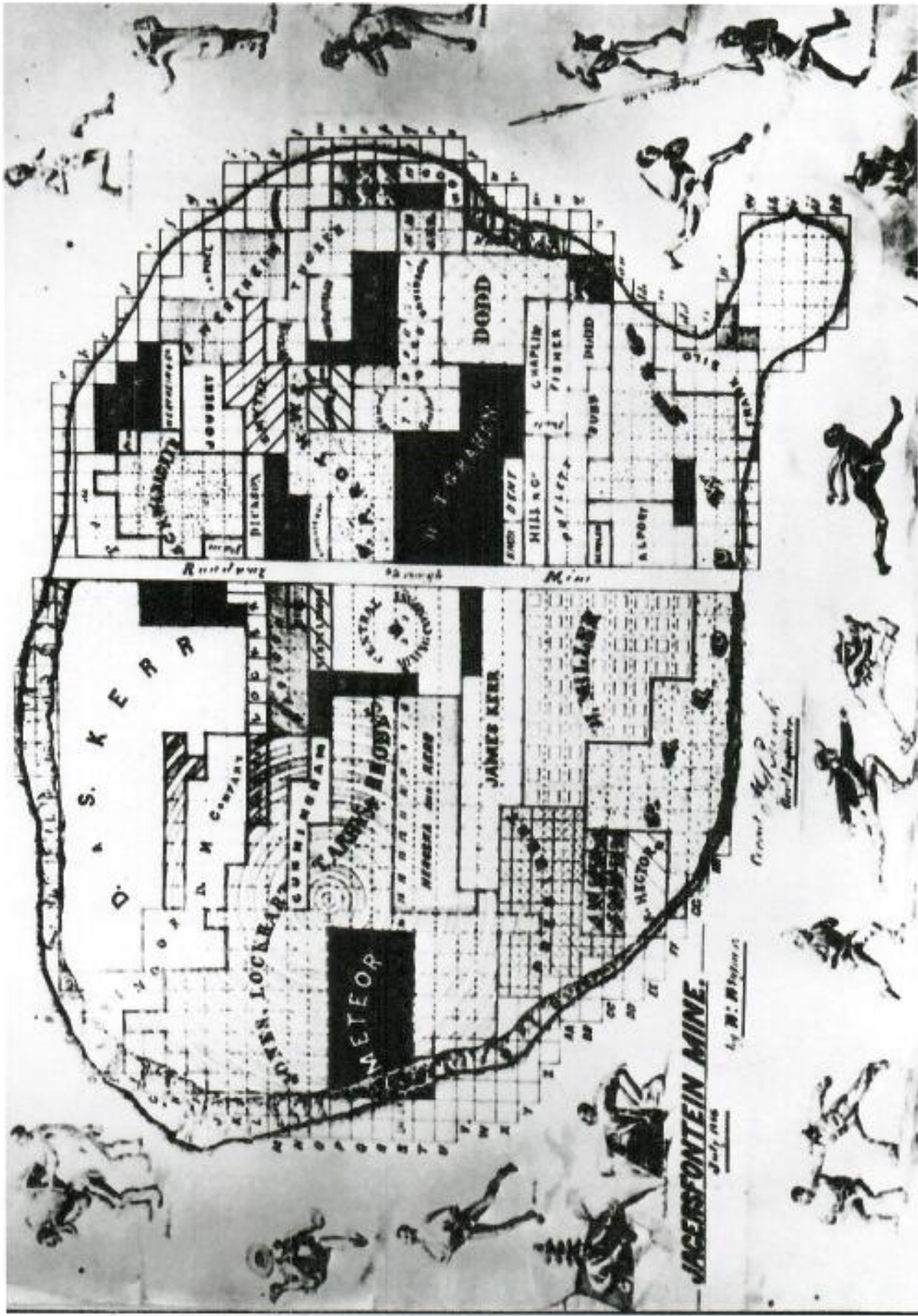
1. That application is made for the open pit area to be nominated as National Heritage Site and that no further development takes place that would alter its appearance or endanger it in any way.
2. That all the buildings in the mine square area are nominated to be declared as Provincial Heritage sites and that the necessary precaution is taken to maintain it accordingly. It is worthy of mentioning that all of these buildings are older than 60 years and are already protected in terms of the National Heritage Resources Act and should be maintained accordingly.
3. That immediate attention is paid to the maintenance of the graveyard in the following:
 - a. Ensuring it is properly fenced in
 - b. Graves that have eroded out require immediate repair by a suitably qualified person (e.g. an archaeologist specializing in grave relocation). Please note that under provisions of section 36(3)(a) of the National Heritage Resources Act no 25 of 1999 a permit is required for these operations.
 - c. That a specialist report is obtained regarding the condition of the graveyard as well as providing a maintenance plan for its upkeep.
 - d. That a concerted effort is made in determining its origin
 - e. That the cattle pen immediately adjacent the graveyard is moved to a suitable distance away from the graveyard so that underground seepage and cattle traffic can cause no further damage
4. That a specialist report is obtained from a suitably qualified person, e.g. a heritage architect, on all structures within the mining area to include the historical components mentioned in table 3, compound, offices and remains of support service buildings, e.g. study office, etc.
5. That arrangements are made for the necessary mitigation (under permit) of structures and buildings as identified in table 3 above
6. That care is taken that no buildings/structures with a field rating of "Local Grade III" and higher deteriorate any further than its current recorded state and in that render it (or portion thereof depending on its rating) useless for retaining as heritage site (refer to section 45 of the National Heritage Resources Act, no 25 of 1999) and similarly that no site that requires mitigating in any way is allowed to fall in such a state that mitigation is no longer possible.
7. That no further mining activities (e.g. reworking the mine dumps) or any other development and/or activities take place within the reported area unless the necessary mitigation of structures as recommended in table 3 have been completed and the Heritage Management Plan mentioned in point 9 below is in place.

8. It is further recommended that a complete heritage audit be done of the remainder of the town not included in this report. The majority of these structures were erected during the early lifetime of the mine, not to mention as a direct result of the mine, and provided the necessary infrastructure by means of shops, churches, recreation, etc. and should therefore not be viewed as separate from the mine (and its associated buildings).
9. As a final measure a Heritage Management and Maintenance Plan should be drawn up for all the heritage structures and features mentioned in this report and should form part of the global environmental management plan to ensure future preservation of all heritage factors.



Loudine Philip
(act) HOD: Archaeology & Anthropology
National Museum
Bloemfontein
051-447-9609 or 082 444 9829



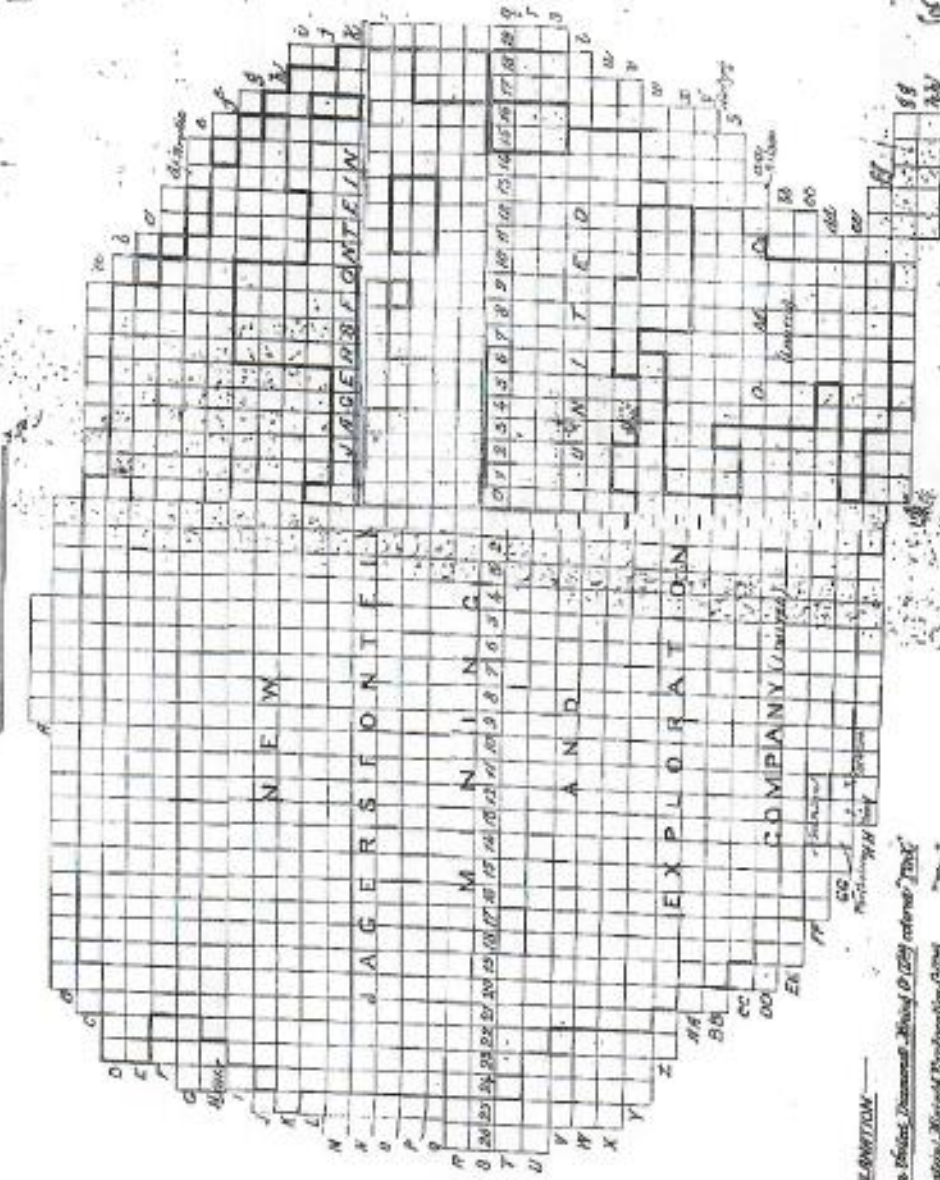


Appendix B

JAGERSFONTEIN MINE COMMISSION

PLAN SHEWING REGISTERED CLAIMS AND OWNERSHIPS

IN THE MINE
November 1st 1890



EXPLANATION
 Property of The Jagersfontein Estates, Deceaseds' Estates & (C) referred to 'The'
 The Jagersfontein Estate, Deceaseds' Estates & (C) referred to 'The'
 other Rights

Completed by the Registrar of the Commission
 25

JGF ALL

2009/05/17

Area	Map Name	Group Name	Related To/Period	Date Recorded	Latitude	Longitude	Altitude
Cavalry Section	Cavalry	Structure	Historic	2009/02/02	-29.7605	25.4061427	m
Cavalry Section	Cavalry	Structure	Historic	2009/02/02	-29.76086	25.406851426	m
Cavalry Section	Cavalry	Structure	Historic	2009/02/02	-29.76038	25.407081427	m
Cavalry Section	Cavalry Structure	Structure	Historic	2009/02/02	-29.76	25.40631428	m
Cavalry Section	Cavalry Structure	Structure	Historic	2009/02/02	-29.76074	25.406871427	m
Cavalry Section	Cavalry Structure	Structure	Historic	2009/02/02	-29.7607	25.406891426	m
Cavalry Section	Cement Foundation	Cement Foundation	Mine	2009/03/02	-29.76225	25.41197	
Cavalry Section	Cement Foundation	Cement Foundation	Mine	2009/03/02	-29.76222	25.41194	
Cavalry Section	Cement Slab on hill	Cement Foundation	Mine	2009/03/02	-29.76321	25.411631439	m
Cavalry Section	Dam with pump and Trough	Dam	Mine	2009/03/02	-29.76281	25.409621421	m
Cavalry Section	Midden	Midden	Mine	2009/02/02	-29.762	25.414481425	m
Cavalry Section	Mudbrich building	Structure	Mine	2009/02/02	-29.76186	25.414871420	m
Cavalry Section	Packed stones	Structure	Mine	2009/03/02	-29.75814	25.401871437	m
Cavalry Section	Packed stones	Structure	Mine	2009/03/02	-29.75808	25.401941434	m
Cavalry Section	Pump House	Structure	Mine	2009/03/02	-29.76389	25.41106	
Cavalry Section	Slimes Dam	Dam	Mine	2009/02/02	-29.7611	25.4071430	m
Cavalry Section	Stone Foundation	Stone Foundation	Mine	2009/03/02	-29.76219	25.41194	
Cavalry Section	Stone Foundation	Stone Foundation	Mine	2009/03/02	-29.76206	25.412	
Cavalry Section	Stone Foundation	Stone Foundation	Mine	2009/03/02	-29.76222	25.412	
Cavalry Section	Stone Foundation	Stone Foundation	Mine	2009/03/02	-29.76208	25.41206	
Cavalry Section	Stone terraces and wall	Other	Historic	2009/03/02	-29.76308	25.411611434	m
Cavalry Section	Watershaft	Structure	Mine	2009/02/02	-29.76478	25.412821421	m
Central Section	Dam center	Dam	Mine	2009/03/02	-29.77124	25.403831426	m
Central Section	Dam Wall	Dam	Mine	2009/03/02	-29.77162	25.405431425	m
Central Section	Dam Wall	Dam	Mine	2009/03/02	-29.77334	25.403851428	m
Central Section	Fence Post	Fence Post	Mine	2009/03/02	-29.77628	25.407571423	m
Central Section	Fence Post	Fence Post	Mine	2009/03/02	-29.77397	25.407941417	m
Central Section	Fence Post	Fence Post	Mine	2009/03/02	-29.77721	25.407421401	m
Central Section	Fence Post	Fence Post	Mine	2009/03/02	-29.77641	25.407561422	m
Central Section	Fence Post	Fence Post	Mine	2009/03/02	-29.77655	25.407541422	m
Central Section	Fence Post	Fence Post	Mine	2009/03/02	-29.77383	25.408011417	m
Central Section	Fence Post	Fence Post	Mine	2009/03/02	-29.77369	25.408031415	m

JGF ALL

2009/05/17

Area	Map Name	Group Name	Related To/ Period	Date Recorded	Latitude	Longitude	Altitude
Central Section	Fence Post	Fence Post	Mine	2009/03/02	-29.77359	25.40808	1416 m
Central Section	Fence Post	Fence Post	Mine	2009/03/02	-29.77272	25.40798	1419 m
Central Section	Fence Post	Fence Post	Mine	2009/03/02	-29.77232	25.4079	1418 m
Central Section	Fence Post	Fence Post	Mine	2009/03/02	-29.77471	25.4078	1419 m
Central Section	Fence Post	Fence Post	Mine	2009/03/02	-29.77442	25.40778	1418 m
Central Section	Fence Post	Fence Post	Mine	2009/03/02	-29.77409	25.40793	1418 m
Central Section	Fence Post	Fence Post	Mine	2009/03/02	-29.77483	25.40777	1416 m
Central Section	Fence Post	Fence Post	Mine	2009/03/02	-29.77538	25.40769	1420 m
Central Section	Gate Post	Gate Post	Mine	2009/03/02	-29.77185	25.40788	1422 m
Central Section	Gate Post	Gate Post	Mine	2009/03/02	-29.77156	25.40785	1423 m
Central Section	Gate Post	Gate Post	Mine	2009/03/02	-29.77148	25.4079	1423 m
Central Section	Gate Post	Gate Post	Mine	2009/03/02	-29.77189	25.40785	1420 m
Central Section	Gate Post	Gate Post	Mine	2009/03/02	-29.77138	25.40795	1423 m
Central Section	Loading Ramp	Structure	Mine	2009/03/02	-29.77447	25.41153	1423 m
Central Section	Pump House	Cement Foundation	Mine	2009/03/02	-29.77165	25.40806	1421 m
Central Section	Stone Wall	Wall	Mine	2009/03/02	-29.77165	25.40806	1422 m
Central Section	Stone Wall	Wall	Mine	2009/03/02	-29.77159	25.40818	1421 m
Central Section	Stonetool Scatter	Stonetool Scatter	Stone Age	2009/03/02	-29.77214	25.4068	1424 m
Compound	Compound	Structure	Mine	2009/04/02	-29.76944	25.41771	1416 m
Compound	Compound	Structure	Mine	2009/04/02	-29.76963	25.41921	1406 m
Compound	Compound	Structure	Mine	2009/04/02	-29.77093	25.41929	1409 m
Compound	Compound	Structure	Mine	2009/04/02	-29.77079	25.4193	1408 m
Compound	Compound	Structure	Mine	2009/04/02	-29.77169	25.41735	
Compound	Compound	Structure	Mine	2009/04/02	-29.77187	25.41895	1409 m
Compound	Hospital	Structure	Mine	2009/04/02	-29.77181	25.41762	
Compound	Hospital	Structure	Mine	2009/04/02	-29.77174	25.41765	
Compound	Hospital	Structure	Mine	2009/04/02	-29.77191	25.4176	
Compound	Hospital	Structure	Mine	2009/04/02	-29.77172	25.41765	
Compound	Hospital	Structure	Mine	2009/04/02	-29.7718	25.41821	1413 m
Compound	Hospital	Structure	Mine	2009/04/02	-29.77169	25.41735	
Compound	Hospital	Structure	Mine	2009/04/02	-29.77187	25.4182	1413 m
Compound	Hospital	Structure	Mine	2009/04/02	-29.77189	25.41744	1409 m

Area	Map Name	Group Name	Related To/ Period	Date Recorded	Latitude	Longitude	Altitude
Compound	Hospital	Structure	Mine	2009/04/02	-29.77179	25.41746	
Compound	Hospital	Structure	Mine	2009/04/02	-29.77178	25.41734	1413 m
Compound	Isolation ward	Structure	Mine	2009/04/02	-29.77232	25.41813	1410 m
Compound	Isolation ward	Structure	Mine	2009/04/02	-29.77225	25.41838	1410 m
Compound	Isolation ward	Structure	Mine	2009/04/02	-29.77225	25.41818	
Compound	Isolation ward	Structure	Mine	2009/04/02	-29.77233	25.41835	1411 m
Compound	Mortuary	Structure	Mine	2009/04/02	-29.7721	25.4182	
Compound	Mortuary	Structure	Mine	2009/04/02	-29.77211	25.41824	
Compound	Mortuary	Structure	Mine	2009/04/02	-29.77212	25.41818	1410 m
Compound	Mortuary	Structure	Mine	2009/04/02	-29.77214	25.41823	1411 m
Compound	Mortuary	Structure	Mine	2009/04/02	-29.77524	25.41806	1420 m
East Section	Ash heap	Midden	Mine	2009/02/02	-29.77524	25.41806	1420 m
East Section	Cement Foundation	Cement Foundation	Mine	2009/05/02	-29.77941	25.41789	1410 m
East Section	Coal Depot	Structure	Mine	2009/05/02	-29.78396	25.4272	1410 m
East Section	Coal Depot	Structure	Mine	2009/05/02	-29.78372	25.42894	1412 m
East Section	Coal Depot	Structure	Mine	2009/05/02	-29.78357	25.42711	1413 m
East Section	Coal Depot	Structure	Mine	2009/05/02	-29.78385	25.42717	1412 m
East Section	Coal Depot	Structure	Mine	2009/05/02	-29.78361	25.42716	1411 m
East Section	Coal Depot	Structure	Mine	2009/05/02	-29.78383	25.42721	1412 m
East Section	Coal Depot	Structure	Mine	2009/05/02	-29.7837	25.42707	
East Section	Coal Depot	Structure	Mine	2009/05/02	-29.78392	25.42725	
East Section	Loading Ramp	Structure	Mine	2009/05/02	-29.78368	25.42714	
East Section	Loading Ramp	Structure	Mine	2009/05/02	-29.78377	25.42721	1411 m
East Section	Loading Ramp	Structure	Mine	2009/05/02	-29.78375	25.42723	1412 m
East Section	Loading Ramp	Structure	Mine	2009/05/02	-29.7837	25.42711	1412 m
East Section	Mound Dam	Dam	Mine	2009/05/02	-29.78091	25.41861	1414 m
East Section	Powerstation	Cement Foundation	Mine	2009/06/02	-29.7728	25.4207	1411 m
East Section	Stores	Cement Foundation	Mine	2009/06/02	-29.77446	25.41935	1416 m
East Section	Train Bridge	Bridge	Historic	2009/03/02	-29.77778	25.42128	1411 m
Graveyard	Grave	Graveyard	Historic	2009/05/02	-29.77616	25.40599	1421 m
Graveyard	Grave	Graveyard	Historic	2009/05/02	-29.77615	25.40614	20 m
Graveyard	Grave	Graveyard	Historic	2009/05/02	-29.77613	25.40602	1421 m
Graveyard	Grave	Graveyard	Historic	2009/05/02	-29.77612	25.40603	1421 m

JGF ALL

2009/05/17

Area	Map Name	Group Name	Related To/ Period	Date Recorded	Latitude	Longitude	Altitude
Graveyard	Graveyard	Graveyard	Historic	2009/03/02	-29.77627	25.40578	1425 m
Graveyard	Graveyard	Graveyard	Historic	2009/03/02	-29.77624	25.40556	1425 m
Graveyard	Graveyard	Graveyard	Historic	2009/03/02	-29.77693	25.40551	1414 m
Graveyard	Graveyard	Graveyard	Historic	2009/03/02	-29.77619	25.40643	1420 m
Graveyard	Graveyard	Graveyard	Historic	2009/03/02	-29.77578	25.40636	1422 m
Graveyard	Graveyard	Graveyard	Historic	2009/03/02	-29.77575	25.40635	1423 m
Graveyard	Graveyard	Graveyard	Historic	2009/03/02	-29.77537	25.40568	1425 m
Graveyard	Graveyard	Graveyard	Historic	2009/03/02	-29.77537	25.40586	1423 m
Graveyard	Graveyard	Graveyard	Historic	2009/03/02	-29.77512	25.40567	
Graveyard	Graveyard	Graveyard	Historic	2009/03/02	-29.77621	25.40568	1423 m
Graveyard	Graveyard	Graveyard	Historic	2009/03/02	-29.776	25.40567	1428 m
Graveyard	Graveyard	Graveyard	Historic	2009/03/02	-29.77589	25.40566	1426 m
Graveyard	Graveyard	Graveyard	Historic	2009/03/02	-29.77571	25.40589	1426 m
Graveyard	Graveyard	Graveyard	Historic	2009/03/02	-29.77619	25.40573	1425 m
Graveyard	Graveyard	Graveyard	Historic	2009/03/02	-29.77561	25.40573	1426 m
Graveyard	Graveyard	Graveyard	Historic	2009/03/02	-29.77554	25.40634	1422 m
Graveyard	Graveyard	Graveyard	Historic	2009/03/02	-29.77523	25.40627	1421 m
Graveyard	Graveyard	Graveyard	Historic	2009/03/02	-29.77572	25.40581	1423 m
Graveyard	Graveyard	Graveyard	Historic	2009/03/02	-29.77576	25.40582	1423 m
Hospital Section	Building with Chimney	Cement Foundation	Mine	2009/02/02	-29.76025	25.41751	1418 m
Hospital Section	Cement foundation	Cement Foundation	Mine	2009/06/02	-29.75586	25.41912	1427 m
Hospital Section	Channel	Other	Mine	2009/02/02	-29.75928	25.41634	1420 m
Hospital Section	Cottage Hospital	Stone Foundation	Mine	2009/02/18	-29.75853	25.42115	1432 m
Hospital Section	Diggers Hospital	Structure	Mine	2009/02/18	-29.75784	25.42056	1427 m
Hospital Section	Diggers Hospital	Structure	Mine	2009/02/18	-29.75799	25.42072	1428 m
Hospital Section	Diggers Hospital	Structure	Mine	2009/02/18	-29.75796	25.42085	1428 m
Hospital Section	Farmstead Midden	Midden	Mine	2009/02/02	-29.75897	25.41551	1426 m
Hospital Section	Mechanical Haulage Foundatio	Cement Foundation	Mine	2009/06/02	-29.75656	25.41984	1430 m
Hospital Section	Mechanical Haulage Foundatio	Cement Foundation	Mine	2009/06/02	-29.75664	25.41992	1431 m
Hospital Section	Mechanical Haulage Foundatio	Cement Foundation	Mine	2009/06/02	-29.75651	25.41994	1432 m
Hospital Section	Mechanical Haulage Foundatio	Cement Foundation	Mine	2009/06/02	-29.75662	25.42	1432 m
Hospital Section	Moth Hall	Structure	Mine	2009/02/18	-29.75792	25.42111	1432 m

JGF ALL

2009/05/17

Area	Map Name	Group Name	Related To/ Period	Date Recorded	Latitude	Longitude	Altitude
Hospital Section	Moth Hall	Structure	Mine	2009/02/18	-29.75765	25.42104	1433 m
Hospital Section	Moth Hall	Structure	Mine	2009/02/18	-29.75787	25.42117	1433 m
Hospital Section	Stone Foundation 1	Stone Foundation	Mine	2009/06/02	-29.75597	25.41928	1427 m
Hospital Section	Stone Foundation 1	Stone Foundation	Mine	2009/06/02	-29.75599	25.41934	1427 m
Hospital Section	Stone Foundation 1	Stone Foundation	Mine	2009/06/02	-29.75605	25.41927	1428 m
Hospital Section	Stone Foundation 1	Stone Foundation	Mine	2009/06/02	-29.75608	25.41932	1427 m
Hospital Section	Stone Foundation 2	Stone Foundation	Mine	2009/06/02	-29.75676	25.41938	1429 m
Hospital Section	Stone Foundation 2	Stone Foundation	Mine	2009/06/02	-29.75652	25.41936	1427 m
Hospital Section	Stone Foundation 2	Stone Foundation	Mine	2009/06/02	-29.75653	25.41933	1428 m
Hospital Section	Stone Foundation 2	Stone Foundation	Mine	2009/06/02	-29.75704	25.41945	1428 m
Hospital Section	Stone Foundation 2	Stone Foundation	Mine	2009/06/02	-29.75706	25.41954	1427 m
Hospital Section	Stone Foundation 3	Stone Foundation	Mine	2009/02/18	-29.75748	25.42122	1432 m
Hospital Section	Stone Foundation 3	Stone Foundation	Mine	2009/02/18	-29.75752	25.42117	1432 m
Hospital Section	Stone Foundation 3	Stone Foundation	Mine	2009/02/18	-29.75764	25.42122	1432 m
Hospital Section	Stone Foundation 4	Stone Foundation	Mine	2009/02/18	-29.75774	25.42137	1436 m
Hospital Section	Stone Foundation 4	Stone Foundation	Mine	2009/02/18	-29.75767	25.42139	1436 m
Hospital Section	Stone Foundation 4	Stone Foundation	Mine	2009/02/18	-29.75777	25.42135	1435 m
Hospital Section	Stone Foundation 6	Structure	Mine	2009/02/02	-29.75847	25.41579	1427 m
Hospital Section	Stone walling	Structure	Mine	2009/02/02	-29.75867	25.41566	1426 m
Hospital Section	Stone walling	Structure	Mine	2009/02/02	-29.75863	25.41543	1428 m
Hospital Section	Stone walling	Structure	Mine	2009/02/02	-29.75849	25.41554	1428 m
Hospital Section	Stone walling	Structure	Mine	2009/02/02	-29.75831	25.41559	1429 m
Hospital Section	Stone walling	Structure	Mine	2009/02/02	-29.75821	25.41567	1426 m
Hospital Section	Stone walling	Structure	Mine	2009/02/02	-29.75793	25.41565	1429 m
Hospital Section	Stone walling	Structure	Mine	2009/02/02	-29.75758	25.41572	1427 m
Hospital Section	Stone walling	Structure	Mine	2009/02/02	-29.75816	25.41627	1422 m
Hospital Section	Stone walling	Structure	Mine	2009/02/02	-29.75875	25.41606	1425 m
Hospital Section	Stone walling	Structure	Mine	2009/02/02	-29.75833	25.41624	1423 m
Hospital Section	Stone walling	Structure	Mine	2009/02/02	-29.75827	25.41627	1423 m
Hospital Section	Stone walling	Structure	Mine	2009/02/18	-29.75775	25.42131	1437 m
Hospital Section	Unidentified Structure	Stone Foundation	Mine	2009/02/18	-29.75777	25.42127	1434 m
Hospital Section	Unidentified Structure	Stone Foundation	Mine	2009/02/18	-29.75776	25.42116	1433 m

Area	Map Name	Group Name	Related To/ Period	Date Recorded	Latitude	Longitude	Altitude
Hospital Section	Watershaft	Structure	Mine	2009/02/02	-29.75946	25.41682	1417 m
Mine Area a	Bathroom	Structure	Mine	2009/06/02	-29.76841	25.41871	1417 m
Mine Area a	Cement Foundation 1	Cement Foundation	Mine	2009/06/02	-29.76801	25.41875	1415 m
Mine Area a	Cement Foundation 2	Cement Foundation	Mine	2009/06/02	-29.76818	25.41874	1418 m
Mine Area a	Change House	Structure	Mine	2009/06/02	-29.76832	25.41892	1417 m
Mine Area a	Cooling Dam	Dam	Mine	2009/06/02	-29.76737	25.41851	1417 m
Mine Area a	Cooling Dam	Cement Foundation	Mine	2009/03/02	-29.76724	25.41792	1413 m
Mine Area a	Crushers	Cement Foundation	Mine	2009/06/02	-29.76848	25.41943	1417 m
Mine Area a	Dam	Dam	Mine	2009/06/02	-29.76862	25.41786	1416 m
Mine Area a	Dam	Dam	Mine	2009/06/02	-29.76864	25.41797	1415 m
Mine Area a	Engine Room	Structure	Mine	2009/02/02	-29.76714	25.41566	1418 m
Mine Area a	Engineers Offices	Structure	Mine	2009/02/02	-29.76834	25.41933	1414 m
Mine Area a	Offices	Structure	Mine	2009/06/02	-29.76904	25.41809	
Mine Area a	Offices	Structure	Mine	2009/06/02	-29.76912	25.41776	1414 m
Mine Area a	Offices	Structure	Mine	2009/06/02	-29.76904	25.41776	
Mine Area a	Riggers	Cement Foundation	Mine	2009/06/02	-29.76757	25.4198	1415 m
Mine Area a	Riggers	Cement Foundation	Mine	2009/06/02	-29.76741	25.4195	1415 m
Mine Area a	Setting Dam	Dam	Mine	2009/06/02	-29.76889	25.41757	1418 m
Mine Area a	Shaft Offices	Structure	Mine	2009/06/02	-29.76819	25.41905	1418 m
Mine Area a	Shaft Timbemen	Cement Foundation	Mine	2009/06/02	-29.76738	25.41922	1414 m
Mine Area a	Structure 2	Dam	Mine	2009/06/02	-29.76734	25.41869	1417 m
Mine Area a	Study Offices	Structure	Mine	2009/06/02	-29.76724	25.41935	1413 m
Mine Area a	Underground Tunnel Entrance	Structure	Mine	2009/06/02	-29.76831	25.41886	1416 m
Mine Area a	Unidentified 1	Structure	Mine	2009/06/02	-29.76841	25.41897	1418 m
Mine Area a	Washing Plant	Dam	Mine	2009/08/02	-29.76875	25.41817	1418 m
Mine Area a	Watershaft no 2 Rock Shaft	Structure	Mine	2009/02/02	-29.76708	25.41559	1418 m
Mine Area b	Bridge over No. 2 drain	Structure	Mine	2009/06/02	-29.76837	25.42055	1418 m
Mine Area b	Cement Dam	Dam	Mine	2009/06/02	-29.76792	25.4214	1419 m
Mine Area b	Cement foundation	Cement Foundation	Mine	2009/06/02	-29.76885	25.42214	1423 m
Mine Area b	Cement foundation 1	Cement Foundation	Mine	2009/06/02	-29.76753	25.42241	1424 m
Mine Area b	Cement foundation 2	Cement Foundation	Mine	2009/06/02	-29.766	25.42364	1438 m

Area	Map Name	Group Name	Related To/ Period	Date Recorded	Latitude	Longitude	Altitude
Mine Area b	Cement foundation 3	Cement Foundation	Mine	2009/06/02	-29.76681	25.42225	1423 m
Mine Area b	Cement foundation 3	Cement Foundation	Mine	2009/06/02	-29.76675	25.42222	1423 m
Mine Area b	Cement foundation 3	Cement Foundation	Mine	2009/06/02	-29.76678	25.4221	1423 m
Mine Area b	Clarification Dam	Dam	Mine	2009/06/02	-29.76548	25.42416	1433 m
Mine Area b	Clarification Dam	Dam	Mine	2009/06/02	-29.76578	25.42389	1432 m
Mine Area b	Clarification Dam	Dam	Mine	2009/06/02	-29.76582	25.42401	1433 m
Mine Area b	Clarification Dam	Dam	Mine	2009/06/02	-29.76546	25.42404	1432 m
Mine Area b	Filter Shop	Stone Foundation	Mine	2009/06/02	-29.76699	25.42296	
Mine Area b	Filter Shop	Stone Foundation	Mine	2009/06/02	-29.76696	25.42283	
Mine Area b	Filter Shop	Stone Foundation	Mine	2009/06/02	-29.76687	25.42281	1432 m
Mine Area b	Filter Shop	Stone Foundation	Mine	2009/06/02	-29.76675	25.42288	1432 m
Mine Area b	Filter Shop	Stone Foundation	Mine	2009/06/02	-29.76671	25.42289	1431 m
Mine Area b	Filter Shop	Stone Foundation	Mine	2009/06/02	-29.76696	25.423	1433 m
Mine Area b	Filter Shop	Stone Foundation	Mine	2009/06/02	-29.76702	25.42284	1431 m
Mine Area b	Hydro Power plant	Structure	Mine	2009/05/02	-29.76677	25.4242	1447 m
Mine Area b	Loading Ramp	Structure	Mine	2009/06/02	-29.76792	25.4214	1419 m
Mine Area b	Pump House	Structure	Mine	2009/06/02	-29.76611	25.42398	1442 m
Mine Area b	Red Brick Building	Structure	Mine	2009/06/02	-29.76732	25.42099	1417 m
Mine Area b	Red Brick Building	Structure	Mine	2009/06/02	-29.76727	25.42123	
Mine Area b	Red Brick Building	Structure	Mine	2009/06/02	-29.76738	25.42102	1417 m
Mine Area b	Red Brick Building	Structure	Mine	2009/06/02	-29.76733	25.42126	1418 m
Mine Area b	Red Brick Building	Structure	Mine	2009/06/02	-29.76694	25.42461	1448 m
Mine Area b	Reservoir	Dam	Mine	2009/06/02	-29.76688	25.42439	1446 m
Mine Area b	Reservoir	Dam	Mine	2009/06/02	-29.76685	25.42469	1447 m
Mine Area b	Reservoir	Dam	Mine	2009/06/02	-29.7666	25.42449	1448 m
Mine Area b	Reservoir	Structure	Mine	2009/05/02	-29.76701	25.42449	
Mine Area b	Stone Foundation 2	Stone Foundation	Mine	2009/06/02	-29.76744	25.42247	1424 m
Mine Area b	Stone Foundation 2	Stone Foundation	Mine	2009/06/02	-29.76732	25.42291	1428 m
Mine Area b	Stone Foundation 2	Stone Foundation	Mine	2009/06/02	-29.76723	25.42287	1428 m
Mine Area b	Stone Foundation 2	Stone Foundation	Mine	2009/06/02	-29.76735	25.42243	1424 m
Mine Area b	Stone Foundation 3	Stone Foundation	Mine	2009/06/02	-29.76674	25.42222	1423 m
Mine Area b	Stone Foundation 3	Stone Foundation	Mine	2009/06/02	-29.76681	25.42226	1424 m

JGF ALL

2009/05/17

Area	Map Name	Group Name	Related To/ Period	Date Recorded	Latitude	Longitude	Altitude
Mine Area b	Stone Foundation 3	Stone Foundation	Mine	2009/06/02	-29.76677	25.42234	
Mine Area b	Stone Foundation 3	Stone Foundation	Mine	2009/06/02	-29.7667	25.42231	
Mine Area b	Stonetool Scatter	Stonetool Scatter	Stone Age	2009/05/02	-29.76622	25.42187	
Mine Area b	Unidentified Stone Foundation	Structure	Mine	2009/06/02	-29.7658	25.42385	1439 m
Mine Square	Acrobatic Club	Structure	Mine	2009/06/02	-29.76371	25.42381	1425 m
Mine Square	Bowling Clubhouse	Structure	Mine Square	2009/06/02	-29.76334	25.4237	1424 m
Mine Square	Bowling Green	Other	Mine Square	2009/06/02	-29.76318	25.42384	1425 m
Mine Square	Building	Structure	Mine	2009/06/02	-29.7648	25.42281	1421 m
Mine Square	Engineers Office	Structure	Mine	2009/05/02	-29.76399	25.42281	1422 m
Mine Square	Engineers Office	Structure	Mine Square	2009/06/02	-29.76407	25.42298	1418 m
Mine Square	Engineers Office	Structure	Mine Square	2009/06/02	-29.76403	25.42341	1425 m
Mine Square	Garage	Structure	Mine Square	2009/06/02	-29.76271	25.42318	
Mine Square	Head Office	Structure	Mine Square	2009/06/02	-29.76434	25.42435	
Mine Square	House	Structure	Mine Square	2009/06/02	-29.7642	25.42443	
Mine Square	House	Structure	Mine Square	2009/06/02	-29.76351	25.42351	
Mine Square	House	Structure	Mine Square	2009/06/02	-29.76366	25.42282	
Mine Square	House	Structure	Mine Square	2009/06/02	-29.76437	25.42403	
Mine Square	House	Structure	Mine Square	2009/06/02	-29.76406	25.42452	
Mine Square	House	Structure	Mine Square	2009/06/02	-29.7645	25.42423	
Mine Square	House	Structure	Mine Square	2009/06/02	-29.76317	25.42302	
Mine Square	House	Structure	Mine Square	2009/06/02	-29.76332	25.42296	
Mine Square	House	Structure	Mine Square	2009/06/02	-29.76353	25.42287	
Mine Square	House	Structure	Mine Square	2009/06/02	-29.76376	25.42317	
Mine Square	House	Structure	Mine Square	2009/06/02	-29.76408	25.42494	
Mine Square	House	Structure	Mine Square	2009/06/02	-29.8305	25.42333	
Mine Square	House	Structure	Mine Square	2009/06/02	-29.76428	25.42386	
Mine Square	House	Structure	Mine Square	2009/06/02	-29.76444	25.42383	
Mine Square	House	Structure	Mine Square	2009/06/02	-29.7618	25.42192	1426 m
Mine Square	Managers House	Structure	Mine Square	2009/06/02	-29.76246	25.42392	
Mine Square	Single Quarters	Structure	Mine Square	2009/06/02	-29.76229	25.42368	
Mine Square	Single Quarters	Structure	Mine Square	2009/06/02	-29.76215	25.42377	
Mine Square	Single Quarters	Structure	Mine Square	2009/06/02	-29.76183	25.42289	

JGF ALL

2009/05/17

Area	Map Name	Group Name	Related To/Period	Date Recorded	Latitude	Longitude	Altitude
Mine Square	Survey Office	Structure	Mine Square	2009/06/02	-29.76296	25.42303	
Mine Square	Swimming pool	Other	Mine	2009/06/02	-29.76351	25.4248	1426 m
Mine Square	Tennis Courts	Other	Mine	2009/06/02	-29.76337	25.42432	1426 m
Mine Square	Underground Managers Office	Structure	Mine Square	2009/06/02	-29.76251	25.42271	
North Section	Cement Foundation with loose l	Cement Foundation	Mine	2009/06/02	-29.74956	25.41847	1436 m
North Section	Cement Foundation with loose l	Cement Foundation	Mine	2009/06/02	-29.74961	25.41844	1434 m
North Section	Cement Foundation with loose l	Cement Foundation	Mine	2009/06/02	-29.74957	25.41832	1437 m
North Section	Ostrich eggshell scatter	Other	Other	2009/06/02	-29.75143	25.41209	1435 m
North Section	Stone and Cement Channel	Structure	Mine	2009/06/02	-29.75518	25.41287	1429 m
North Section	Stone and Cement Wall	Wall	Mine	2009/06/02	-29.75299	25.40907	1437 m
North Section	Stone Bridge	Bridge	Mine	2009/06/02	-29.75575	25.414	1422 m
North Section	Stonetool Scatter	Stonetool Scatter	Stone Age	2009/06/02	-29.75276	25.40995	1436 m
North Section	Stonetool Scatter	Stonetool Scatter	Stone Age	2009/06/02	-29.75207	25.41148	1436 m
South Section	Mechanical Haulage Foundatio	Cement Foundation	Mine	2009/05/02	-29.79005	25.39898	1434 m
South Section	Mechanical Haulage Foundatio	Cement Foundation	Mine	2009/05/02	-29.79001	25.39887	1433 m
South Section	Mechanical Haulage Foundatio	Cement Foundation	Mine	2009/05/02	-29.78996	25.39895	1434 m
South Section	Mechanical Haulage Foundatio	Cement Foundation	Mine	2009/05/02	-29.79017	25.40338	1426 m
South Section	Mechanical Haulage Foundatio	Cement Foundation	Mine	2009/05/02	-29.79011	25.39895	1433 m
South Section	Mechanical Haulage Foundatio	Cement Foundation	Mine	2009/05/02	-29.78833	25.40036	1433 m
South Section	Mechanical Haulage Foundatio	Cement Foundation	Mine	2009/05/02	-29.7829	25.40454	1430 m
South Section	Mechanical Haulage Foundatio	Cement Foundation	Mine	2009/05/02	-29.7901	25.40344	1426 m
South Section	Mechanical Haulage Foundatio	Cement Foundation	Mine	2009/05/02	-29.77938	25.40729	1429 m
South Section	Mechanical Haulage Foundatio	Cement Foundation	Mine	2009/05/02	-29.77931	25.40731	1428 m
South Section	Mechanical Haulage Foundatio	Cement Foundation	Mine	2009/05/02	-29.78832	25.40043	1432 m
South Section	Mechanical Haulage Foundatio	Cement Foundation	Mine	2009/05/02	-29.78118	25.40587	1431 m
South Section	Mechanical Haulage Foundatio	Cement Foundation	Mine	2009/05/02	-29.78114	25.4059	1431 m
South Section	Mechanical Haulage Foundatio	Cement Foundation	Mine	2009/05/02	-29.78296	25.40449	1429 m
South Section	Mechanical Haulage Foundatio	Cement Foundation	Mine	2009/05/02	-29.78648	25.40179	1433 m
South Section	Mechanical Haulage Foundatio	Cement Foundation	Mine	2009/05/02	-29.78652	25.40173	1433 m
South Section	Packed stones	Structure	Mine	2009/05/02	-29.7904	25.39923	1432 m
South Section	Packed stones	Structure	Mine	2009/05/02	-29.79051	25.39839	1433 m
South Section	Packed stones	Structure	Mine	2009/05/02	-29.79049	25.39908	1432 m

JGF ALL

2009/05/17

Area	Map Name	Group Name	Related To/ Period	Date Recorded	Latitude	Longitude	Altitude
South Section	Stonewall/Retainerwall	Wall	Mine	2009/05/02	-29.7826	25.40438	1440 m
South Section	Stonewall/Retainerwall	Wall	Mine	2009/05/02	-29.78578	25.40021	1438 m
South Section	Stonewall/Retainerwall	Wall	Mine	2009/05/02	-29.78698	25.39862	1441 m
South Section	Stonewall/Retainerwall	Wall	Mine	2009/05/02	-29.78774	25.39757	1441 m
West Section	Airfield Bathroom	Structure	Mine	2009/03/02	-29.77421	25.38478	1460 m
West Section	Airfield Hanger	Cement Foundation	Mine	2009/05/02	-29.77431	25.38561	1460 m
West Section	Cattle Kraal	Kraal	Farming activities	2009/04/02	-29.76577	25.38248	1493 m
West Section	Dam Wall	Dam	Mine	2009/04/02	-29.77099	25.38596	1457 m
West Section	Dam Wall	Dam	Mine	2009/04/02	-29.77208	25.38563	1457 m
West Section	Dam Wall	Dam	Mine	2009/04/02	-29.77176	25.38599	1456 m
West Section	Dam Wall	Dam	Mine	2009/04/02	-29.77153	25.38622	1456 m
West Section	Dam Wall	Dam	Mine	2009/04/02	-29.77132	25.38627	1455 m
West Section	Grave	Graveyard	Historic	2009/05/02	-29.77747	25.39319	
West Section	Kraal	Kraal	Farming activities	2009/05/02	-29.78239	25.3868	1481 m
West Section	Stone Heap	Stone Heap	Mine	2009/04/02	-29.76704	25.3821	1489 m
West Section	Stone Heap	Stone Heap	Mine	2009/04/02	-29.76676	25.38228	1486 m
West Section	Stone Heap	Stone Heap	Mine	2009/04/02	-29.76655	25.38213	1468 m
West Section	Stone Heap	Stone Heap	Mine	2009/04/02	-29.7656	25.38204	1493 m
West Section	Stonetool Scatter	Stonetool Scatter	Stone Age	2009/04/02	-29.78321	25.3824	1473 m
West Section	Stonetool Scatter	Stonetool Scatter	Stone Age	2009/04/02	-29.76532	25.38187	1495 m



Appendix E