

**APPENDIX 2: TriReach PHOTOGRAPHIC DOCUMENTATION**  
**STAFF HOUSING SECTION**



Fig. 1: A general view of the northern section of the proposed staff housing site. This section was historically cultivated.



Fig. 2: A general view of the western section of the proposed staff housing site.





Fig. 3: A general view of the southern section of the proposed staff housing site.



Fig. 4: A general view of the eastern section of the proposed staff housing site.

Visibility in this section was excellent as it was dry and open.





Fig. 5: Some decorated and undecorated clay potsherds were observed to the north of the staff housing site (between the access road and the proposed site).



Fig. 6: Two pieces of the decorated clay potsherd (see fig. 5), fits together and it believed to belong to the Late Iron Age.





Fig. 7: Undecorated clay potsherds were observed in the access road (outside of the study area).



Fig. 8: Undecorated clay potsherds were observed in the access road (outside of the study area).



## ACCESS ROADS



Fig. 9: Existing access roads will be used near the staff housing section.



Fig. 10: Existing access roads will be used near the Lodge unit section.

## NON-PERENNIAL TRIBUTARY



Fig. 11: The non-perennial tributary facing south.



Fig. 12: The non-perennial tributary facing north.



**LODGE UNITS SECTION (ON EITHER SIDE OF THE NON-PERENNIAL TRIBUTARY):**  
**UNIT 1 (east of the non-perennial tributary):**



Fig. 13: Unit 1 is east of the tributary and situated in natural vegetation.



Fig. 14: Unit 1: Visibility was good as the vegetation was dry and low.



**UNIT 2 (FAMILY unit)(east of the non-perennial tributary):**



Fig. 15: The area of Unit 2 was open and accessible. Visibility was excellent.



Fig. 16: Unit 2 borders on an existing access road in the east.



**UNIT 3 (east of the non-perennial tributary):**



Fig. 17: Unit 3 was open and accessible, visibility was excellent.



Fig. 18: Another image of the proposed site for Unit 3.



**GYM (east of the non-perennial tributary):**



Fig. 19: The Gym area is facing the tributary. Visibility was excellent.



Fig. 20: Another view of the Gym area.



**UNIT 4 “HONEYMOON SUITE” (west of the non-perennial tributary):**



Fig. 21: Unit 4 is slightly elevated from the tributary. Visibility was excellent.



Fig. 22: Another view of the site for Unit 4.



**UNIT 5: (west of the non-perennial tributary):**



Fig. 23: The area for Unit 5 is currently used for evening bush dinners. The area was open and accessible and visibility was excellent.

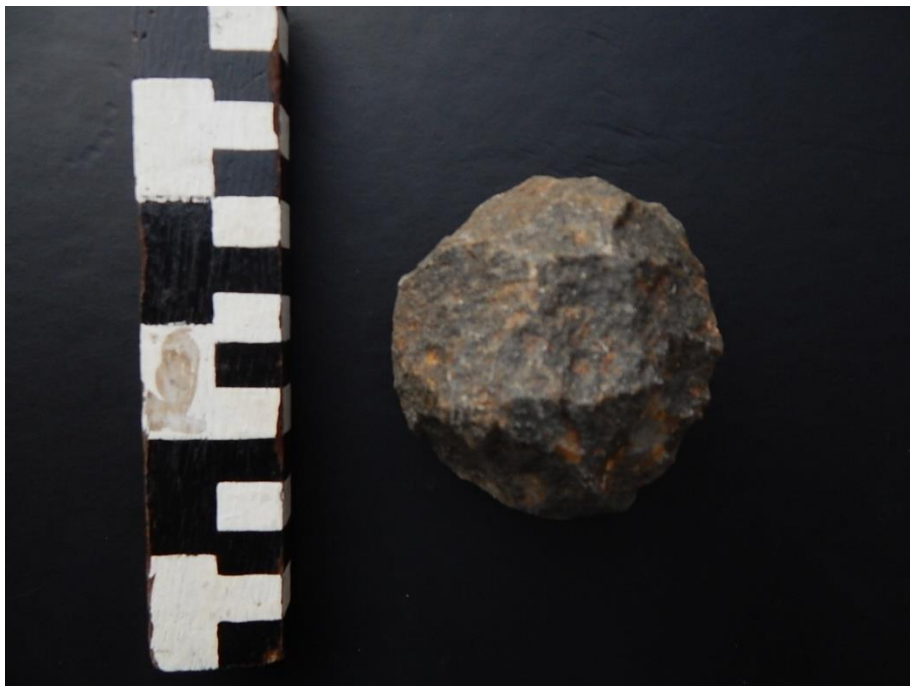


Fig. 24: A stone implement (round scraper), dating for the Middle Stone Age was observed at the proposed site for Unit 5.





Fig. 25: Unit 5 is slightly elevated from the tributary.

**UNIT 6: (east of the non-perennial tributary):**



Fig. 26: Unit 6 is further from the tributary, and near the current eastern access road.



**MAIN BUILDING (west of the non-perennial tributary):**



Fig. 27: The area for the Main building will be used as the center for the lodge (loungue, deck, kitchen, restaurant etc.)



Fig. 28: The area for the Main building was open and accessible and visibility was good.