

PHOTOGRAPHIC EVIDENCE

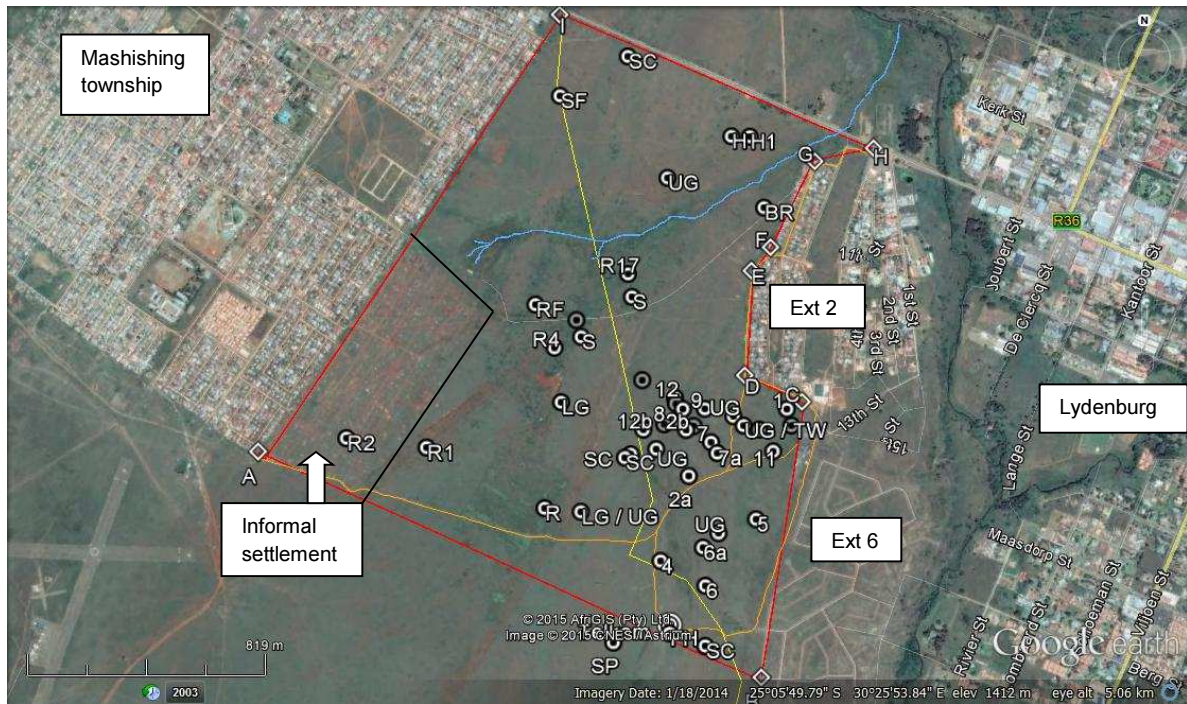


Fig. 1: Location of the heritage features on the study area. Mashishing township is on the west and the town of Lydenburg, to the east.



Fig. 2: Detail of the south-eastern section where the LIA stone walls are concentrated.



Fig. 3: The study area as seen from east to west. Mashishing township is located in the background. A drainage line is situated in the gravity low area (2015).



Fig. 4: The view from the north-western corner to south-east. Note the Eskom lines.

SECTION 1: Includes features 1, 1a, 10 and 11 on map:



Fig. 5: Site 1: The LIA stone walled sites in section 1, include features 1, 10 and 11 which are situated close together, and borders extension 2 in the north, and extension 6 in the east (photo 2009). Most of the stone walls at section 1 have been destroyed by a recent soccer field.



Fig. 6: The recent soccer field, directly south of extension 2, has destroyed most of the stone walls in section 1 (photo 2015).



Fig. 7: A distinct layout pattern at feature 1a, which has been impacted upon by the soccer field.



Fig. 8: Detail of an oval formation at feature1a (2009) which had been impacted upon by the recent soccer field.



Fig. 9: Many upper grinders were identified at section 1 and 1a in 2009.



Fig. 10: Some of the residents at extension 2, which borders section 1 in the north, have removed larger stones of the LIA settlement to be used at their houses, as seen above.



Fig. 11: Features 10 & 11 are grouped with section 1 and are located further south of extension 2 and west of extension 6.



Fig. 12: Features 10 & 11 are grouped with section 1 in the report.



Fig. 13: This photograph of feature 11 was taken in 2015 and visibility was restricted by thick vegetation cover.

SECTION 2: Located near the Eskom pylon, includes features 2, 2a, 7, 7a, 8, 9, 12, 12a, and 12b on the map:



Fig. 14: A recent 2015 photo of section 2 (feature 2a), where visibility is restricted.



Fig. 15: Section 2, (feature 2a) taken at the same angle as the photo above, in 2009.



Fig. 16: A broken upper grinder. There are many upper grinders in section 2, 7, 8 ,9 & 12.



Fig. 17: Many potsherds were observed in section 2, 7, 8, 9 & 12.



Fig. 18: Section 2, Feature 7. This section has distinct and indistinct LIA features.



Fig. 19: Section 2 – A distinct LIA stone wall, feature 8.