

**PHASE 1 HERITAGE IMPACT ASSESSMENT REPORT ON THE
FARM EUREKA 200 NEAR KIMBERLEY, FRANCES BAARD
DISTRICT MUNICIPALITY, NORTHERN CAPE PROVINCE.**

Ref No. 9/2/049/0001

Peter B Beaumont

c/o Archaeology Department
McGregor Museum
PO Box 316
8300 Kimberley
Tel 053 - 842 0986 or 053 - 839 2700
Fax 053 - 842 1433
e-mail se@museumsnc.co.za

CONSULTANT

Mr Peter Roux

Envirosec Consulting Services

PO Box 10396
Beaconsfield
8315 Kimberley
Tel 053 – 831 2659 or 082 493 4756
Fax 053 – 831 6158
e-mail consultants@iafrica.com

7 March 2007

EXECUTIVE SUMMARY

The purpose of this study was to establish if any heritage sites were present on the farm Eureka 200 in the Frances Baard District Municipality of the Northern Cape Province. A 2.5 hour – long foot survey of that 314 ha property produced 13 hornfels artefacts, but no actual sites, palaeontological bones or graves. It is consequently considered that this ground has no archaeological significance and that a proposed township development there will have no impact on the heritage resources of the Northern Cape.

314 ha → 2.5 hours

BACKGROUND INFORMATION

There has, for some time, been a moratorium on the development of new townships within the entire Sol Plaatje Municipality. To meet the consequent demand for affordable plots, developers are now examining surrounding land where farming is no longer viable. In the present case, the ground owner, H. Booyesen, plans to subdivide Eureka into stands with access to the N12, at a point ~15 km from central Kimberley. This report is part of an EIA that is being compiled by Peter Roux of Envirosec for him.

LOCAL ARCHAEOLOGY

Sites in the near vicinity of Kimberley include the pecked engravings at Wildebeest Kuil and various Fauresmith localities, of which the best known is Roseberry Plain 1 on the Samaria road (Beaumont & Morris 1990)

PROPERTY DESCRIPTION

The 314 ha farm Eureka 200 lies east of the N12 and ca 15 km to the SSW of central Kimberley in the Frances Baard District Municipality of the Northern Cape (Figs. 1 & 2). The property, with an approximate western limit at 28° 47' 45.9"S, 24° 43' 07.7" E, comprises a dolerite hillside at its southern end, N and NE of which the ground slopes gently downwards. About 2.5 hours was spent walking over most of its N – S extent with Peter Roux and Tania Anderson on the afternoon of Saturday 10 February.

SUPERFICIAL GEOLOGY

Eroded vehicle tracks on the eastern side of Eureka, towards Ronald's Vlei (Fig. 1) show that the superficial ~10 – 20 cm deep Hutton Sands there are underlain by calcrete. In contrast, a borrow pit and other exposures near the western limit of this farm indicate that the Hutton Sands in that area are up to 2.5 m deep and directly cover dolerite bedrock.

HERITAGE FINDINGS

The dolerite hillside overlooking Kimberley on the south side of the property has numerous ~2 – 10 m lengths of man – moved and stacked boulders, representing Boer positions during the Siege of Kimberley (Fig. 3). I gather that this vicinity, in which we noted an old bully-beef tin and an Anglo – Boer war – aged bullet (Fig. 4), will be left as it is. This is in accord with National Heritage Resources Act No. 25 of 1999, which protects conflict sites that are 75 years or more old.

Towards the farm centre there is a lone bluegum tree, close to an early railway track, where we found a modest concentration of ca. century – old glass and porcelain pieces. ^(Fig 5) Together with these were knapped dolerite fragments, which suggest that rocks were dressed here for use in the construction of culverts along the train trackway.

Below 2.5 m of sterile Hutton Sands in the previously – mentioned borrow pit, in eroded areas where the boulders were moved on the hillside, and at exposures elsewhere on the property, I noted a low density of hornfels artefacts. These specimens, 13 in all, are probably entirely attributable to the Fauersmith, given an identical stratigraphic position for such material elsewhere in and around Kimberley. ^(Fig 6)

Nowhere on Eureka did I see any actual site, palaeontological bone or old graves.

CONCLUSIONS

The inspected property showed a sparse lithic scatter below the superficial red sands, but no sites of archaeological significance, and my conclusion is therefore that the subdivision of Eureka, except for the southern hillside, will have no impact on the heritage resources of the Northern Cape.

REFERENCE

Beaumont, P. & Morris, D. 1990. *Guide to the archaeological sites in the Northern Cape*. McGregor Museum, Kimberley.

NOTES

- A copy of the locality maps and all appended Figures must accompany this report to SAHRA.

- Applications to SAHRA will not be processed unless accompanied by payment of R150 per application. SAHRA banking details are: ABSA, Branch Code: 312109; Current Account no.: 360 680 606.

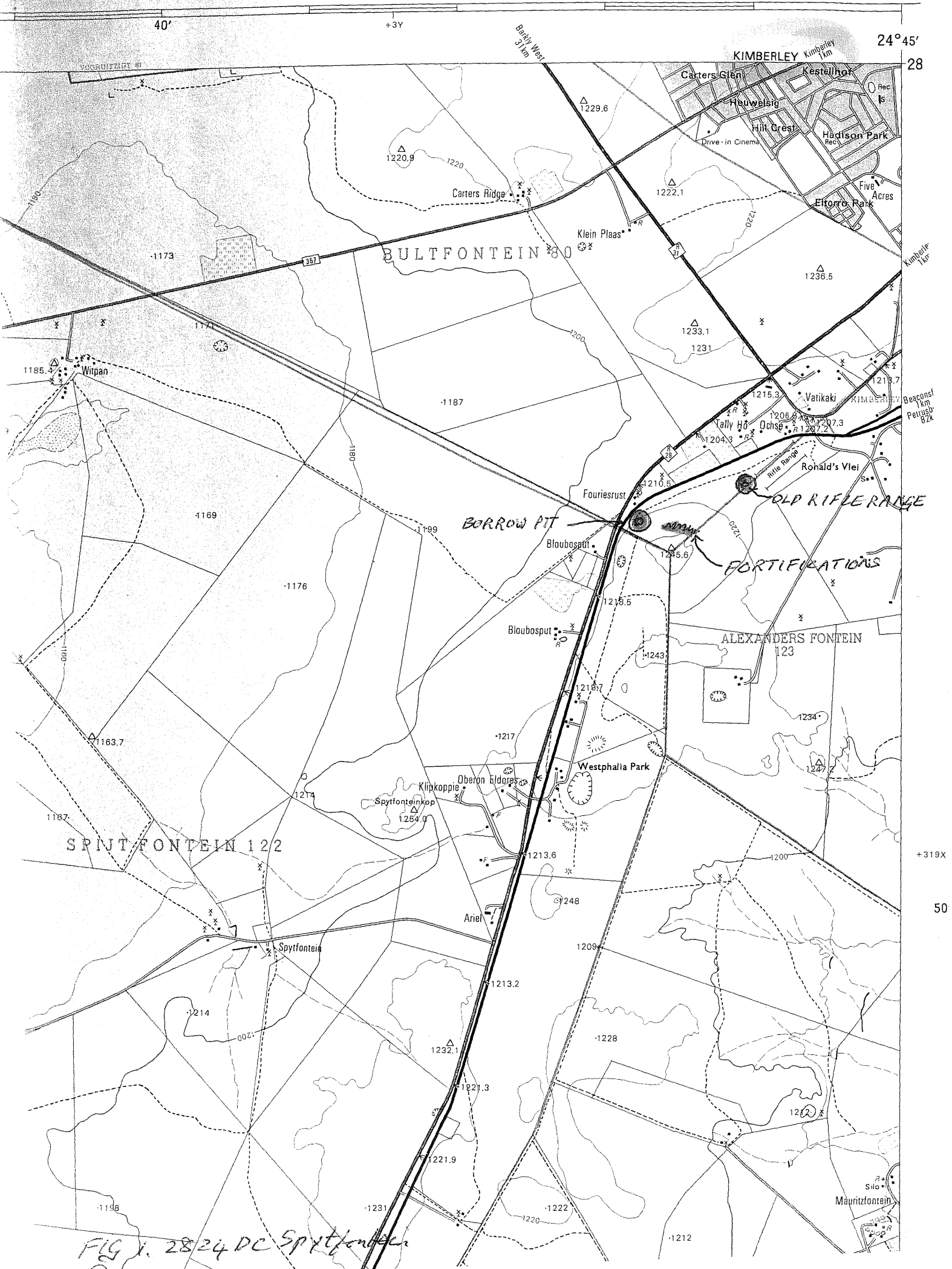
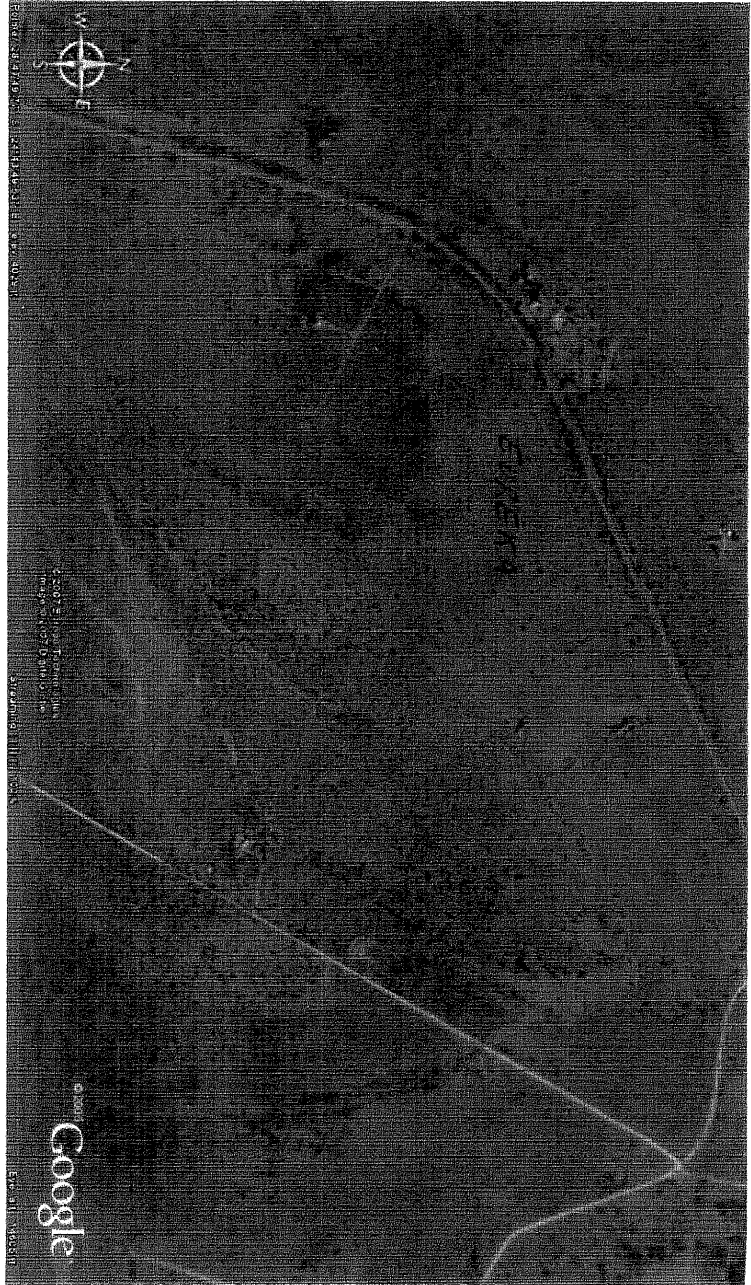


FIG. 1. 2824 DC Spytfontein

FIG 2



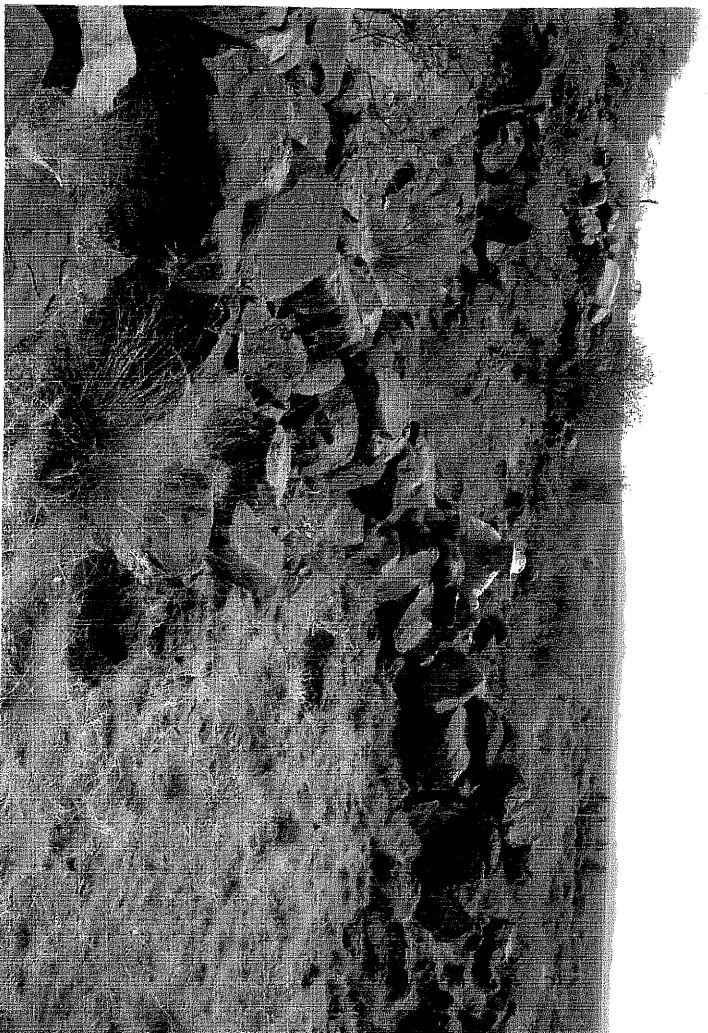


Fig 3

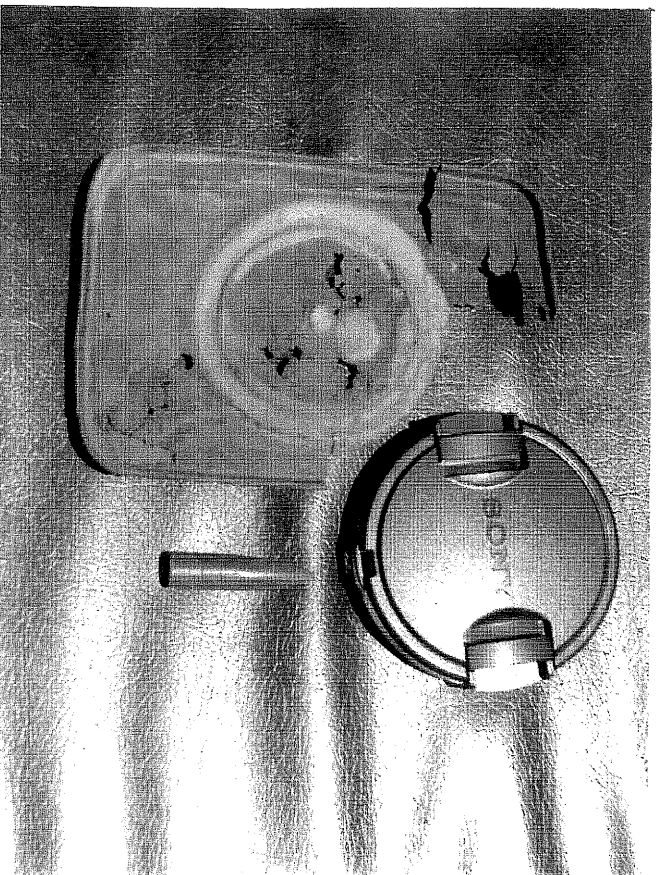


Fig 4.



Fig 5



Fig 6

- ① typewheel scraper
- ② blade fragments