

Heritage Impact Assessment Report

HERITAGE IMPACT ASSESSMENT FOR THE
PROPOSED SPAARWATER TOWNSHIP
DEVELOPMENT

PREPARED BY:
G&A HERITAGE



PREPARED FOR:



AND



CREDIT SHEET

Project Director

STEPHAN GAIGHER (BA Hons, Archaeology, UP)

Principal Investigator for G&A Heritage

Member of ASAPA (Site Director Status)

Tel.: (015) 516 1561

Cell.: 073 752 6583

E-mail: stephan@gaheritage.co.za

Website: www.gaheritage.co.za

Report Author

STEPHAN GAIGHER

Disclaimer; Although all possible care is taken to identify all sites of cultural importance during the investigation of study areas, it is always possible that hidden or sub-surface sites could be overlooked during the study. G&A Heritage and its personnel will not be held liable for such oversights or for costs incurred as a result of such oversights.

SIGNED OFF BY: STEPHAN GAIGHER



MANAGEMENT SUMMARY

Site name and location: Spaarwater Township Development on the Remainder Extent of Portion 29 of the Farm Spaarwater 171 IR, Gauteng Province.

Municipal Area: Ekurhuleni Metropolitan Municipality.

Developer: Ekurhuleni Metropolitan Municipality

Consultant: G&A Heritage, PO Box 522, Louis Trichardt, 0920, South Africa. 38A Vorster Street, Louis Trichardt, 0920

Date of Report: 01 July 2015

The Ekurhuleni Metropolitan Municipality is proposing the development of a new mixed used residential township on the Remainder Extent of Portion 29 of the Farm Spaarwater 171 IR, Gauteng Province.

Findings;

Most of the proposed area is currently vacant land with a residential settlement within the borders of the proposed development (north side of the site), a slimes dam along the eastern boundary and the Spaarwater Pan on the western side of the site. It is not anticipated that the development will be bedrock intrusive and as such a paleontological deposits will not be affected.

Recommendations;

There is a possibility of unmarked graves being uncovered during development and the relevant steps for the mitigation of such a situation is given in the report.

Fatal Flaws;

No fatal flaws were identified.

TABLE OF CONTENTS

Introduction	7
Project Location	10
Methodology	11
Evaluating Heritage Impacts	11
Assessing Visual Impact.....	11
Previous Studies in the Area	12
Regional Cultural Context	13
Palaeontology	13
Stone Age.....	13
Iron Age.....	14
The Historic Era	15
The Cultural Landscape	16
Historic Maps and Built Environment.....	17
Assessment of Heritage Potential.....	21
Assessment Matrix	21
Determining Heritage Sensitivity	21
Significance Evaluation	23
Historic Significance.....	23
Architectural Significance	23
Spatial Significance.....	24
Impact Evaluation	24
Determination of Significance of Impacts	24
Impact Rating System	24
Rating System Used To Classify Impacts	25
Anticipated Impact of the Development.....	28
Resource Management Recommendations.....	28



References Cited & Researched29



TABLE OF FIGURES

Figure 1: Location Map.....	10
Figure 2. Aerial view of the study area.....	11
Figure 3. (1) handaxe on flake; (2) thick discoidal core; (3) polyhedral core (Pollarolo, Kuman, Bruxelles, 2010)	13
Figure 4. (1,2) Handaxes with large side removal; (3-6) handaxes (Pollarolo, Susino, Kuman, Bruxelles, 2010)	14
Figure 5. Cultural Landscape	16
Figure 6. Topographical Map 2628 AD 1944	17
Figure 7. Topographical Map 2628 AD 1976	17
Figure 8. Topographical Map 2628 AD 1995	18
Figure 9. Topographical Map 2628 AD 2002	18
Figure 10. Topographical Map 2628 AD 2010	19



PROJECT RESOURCES

HERITAGE IMPACT REPORT

FIRST PHASE HERITAGE IMPACT ASSESSMENT REPORT FOR THE PROPOSED SPAARWATER MIXED USE RESIDENTIAL TOWNSHIP DEVELOPMENT.

INTRODUCTION

Legislation and methodology

G&A Heritage was appointed by Galago Environmental to undertake a first phase heritage impact assessment for the proposed Spaarwater mixed use residential township development on the Remainder Extent of Portion 29 of the Farm Spaarwater 171 IR in extent: 170 ha.

Section 38(1) of the South African Heritage Resources Act (25 of 1999) requires that a heritage study be undertaken for:

- (a) Construction of a road, wall, power line, pipeline, canal or other similar form of linear development or barrier exceeding 300 m in length;
- (b) Construction of a bridge or similar structure exceeding 50 m in length; and
- (c) Any development, or other activity which will change the character of an area of land, or water –
 - (1) Exceeding 10 000 m² in extent;
 - (2) Involving three or more existing erven or subdivisions thereof; or
 - (3) Involving three or more erven, or subdivisions thereof, which have been consolidated within the past five years; or
- (d) The costs of which will exceed a sum set in terms of regulations; or
- (e) Any other category of development provided for in regulations.

While the above describes the parameters of developments that fall under this Act., Section 38 (8) of the NHRA is applicable to this development. This section states that;

- (8) The provisions of this section do not apply to a development as described in subsection (1) if an evaluation of the impact of such development on heritage resources is required in terms of the Environment Conservation Act, 1989 (Act 73 of 1989), or the integrated environmental management guidelines issued by the Department of Environment Affairs and Tourism, or the Minerals Act, 1991 (Act 50 of 1991), or any other legislation: Provided that the consenting authority must ensure that the evaluation fulfils the requirements of the relevant heritage resources authority in terms of subsection (3), and any comments and recommendations of the relevant heritage resources authority with regard to such development have been taken into account prior to the granting of the consent.

In regards to a development such as this that falls under Section 38 (8) of the NHRA, the requirements of Section 38 (3) applies to the subsequent reporting, stating that;

- (3) The responsible heritage resources authority must specify the information to be provided in a report required in terms of subsection (2) (a): Provided that the following must be included:
 - (a) The identification and mapping of all heritage resources in the area affected;
 - (b) An assessment of the significance of such resources in terms of the heritage assessment criteria set out in section 6 (2) or prescribed under section 7;
 - (c) An assessment of the impact of the development on such heritage resources;
 - (d) An evaluation of the impact of the development on heritage resources relative to the sustainable social and economic benefits to be derived from the development;



- (e) The results of consultation with communities affected by the proposed development and other interested parties regarding the impact of the development on heritage resources;
- (f) If heritage resources will be adversely affected by the proposed development, the consideration of alternatives; and
- (g) Plans for mitigation of any adverse effects during and after the completion of the proposed development.

A heritage impact assessment is not limited to archaeological artefacts, historical buildings and graves. It is far more encompassing and includes intangible and invisible resources such as places, oral traditions and rituals. A heritage resource is defined as any place or object of cultural significance i.e. of aesthetic, architectural, historical, scientific, social, spiritual, linguistic or technological value or significance. This includes the following:

- (a) Places, buildings, structures and equipment;
- (b) Places to which oral traditions are attached or which are associated with living heritage;
- (c) Historical settlements and townscapes;
- (d) Landscapes and natural features;
- (e) Geological sites of scientific or cultural importance;
- (f) Archaeological and paleontological sites;
- (g) Graves and burial grounds, including –
 - (1) Ancestral graves,
 - (2) Royal graves and graves of traditional leaders,
 - (3) Graves of victims of conflict (iv) graves of important individuals,
 - (4) Historical graves and cemeteries older than 60 years, and
 - (5) Other human remains which are not covered under the Human Tissues Act, 1983 (Act No.65 of 1983 as amended);
- (h) Movable objects, including ;
 - (1) Objects recovered from the soil or waters of South Africa including archaeological and paleontological objects and material, meteorites and rare geological specimens;
 - (2) Ethnographic art and objects;
 - (3) Military objects;
 - (4) Objects of decorative art;
 - (5) Objects of fine art;
 - (6) Objects of scientific or technological interest;
 - (7) Books, records, documents, photographic positives and negatives, graphic, film or video material or sound recordings; and
 - (8) Any other prescribed categories, but excluding any object made by a living person;
- (i) Battlefields;
- (j) Traditional building techniques.

A 'place' is defined as:

- (a) A site, area or region;
- (b) A building or other structure (which may include equipment, furniture, fittings and articles associated with or connected with such building or other structure);
- (c) A group of buildings or other structures (which may include equipment, furniture, fittings and articles associated with or connected with such group of buildings or other structures); and
- (d) An open space, including a public square, street or park; and in relation to the management of a place, includes the immediate surroundings of a place.

'Structures' means any building, works, device, or other facility made by people and which is fixed to land and any fixtures, fittings and equipment associated therewith older than 60 years.

'Archaeological' means:

- (a) Material remains resulting from human activity which are in a state of disuse and are in or on land and are older than 100 years, including artefacts, human and hominid remains and artificial features and structures;



- (b) Rock art, being a form of painting, engraving or other graphic representation on a fixed rock surface or loose rock or stone, which was executed by human agency and is older than 100 years including any area within 10 m of such representation; and
- (c) Wrecks, being any vessel or aircraft, or any part thereof, which was wrecked in South Africa, whether on land or in the maritime cultural zone referred to in section 5 of the Maritime Zones Act 1994 (Act 15 of 1994), and any cargo, debris or artefacts found or associated therewith, which are older than 60 years or which in terms of national legislation are considered to be worthy of conservation;
- (d) Features, structures and artefacts associated with military history which are older than 75 years and the sites on which they are found.

'Paleontological' means any fossilised remains or fossil trace of animals or plants which lived in the geological past, other than fossil fuels or fossiliferous rock intended for industrial use, and any site which contains such fossilised remains or trace.

'Grave' means a place of interment and includes the contents, headstone or other marker of and any other structures on or associated with such place. The South African Heritage Resources Agency (SAHRA) will only issue a permit for the alteration of a grave if it is satisfied that every reasonable effort has been made to contact and obtain permission from the families concerned.

The removal of graves is subject to the following procedures as outlined by the SAHRA:

- Notification of the impending removals (using English, Afrikaans and local language media and notices at the grave site);
- Consultation with individuals or communities related or known to the deceased;
- Satisfactory arrangements for the curation of human remains and / or headstones in a museum, where applicable;
- Procurement of a permit from the SAHRA;
- Appropriate arrangements for the exhumation (preferably by a suitably trained archaeologist) and re-interment (sometimes by a registered undertaker, in a formally proclaimed cemetery);
- Observation of rituals or ceremonies required by the families.

The limitations and assumptions associated with this study are as follows;

- Sites were evaluated by means of description of the cultural landscape and analysis of written sources and available databases.
- It was assumed that layout as provided by Galago Environmental and Metroprojects was correct.
- We assumed that the public participation process performed as part of the Environmental Impact Assessment process would be sufficiently encompassing not to be repeated in the Heritage Impact Assessment.

Table 1. Impacts on the NHRA Sections

Act	Section	Description	Possible Impact	Action
National Heritage Resources Act (NHRA)	34	Preservation of buildings older than 60 years	No impact	None
	35	Archaeological, paleontological and meteor sites	No impact	None
	36	Graves and burial sites	Possible impact	Management Plan
	37	Protection of public monuments	No impact	None
	38	Does activity trigger a HIA?	Yes	HIA

Table 2. NHRA Triggers

Action Trigger	Yes/No	Description
----------------	--------	-------------



Construction of a road, wall, power line, pipeline, canal or other linear form of development or barrier exceeding 300m in length.	No	N/A
Construction of a bridge or similar structure exceeding 50m in length.	No	N/A
Development exceeding 5000 m ²	Yes	Spaarwater Township
Development involving more than 3 erven or sub divisions	No	N/A
Development involving more than 3 erven or sub divisions that have been consolidated in the past 5 years	No	N/A
Re-zoning of site exceeding 10 000 m ²	Yes	Possible rezoning
Any other development category, public open space, squares, parks or recreational grounds	No	N/A

PROJECT LOCATION

The proposed Spaarwater mixed used residential township development is located close to Duduza, Nigel and Springs on the Remainder Extent of Portion 29 of the Farm Spaarwater 171 IR in the Gauteng Province.

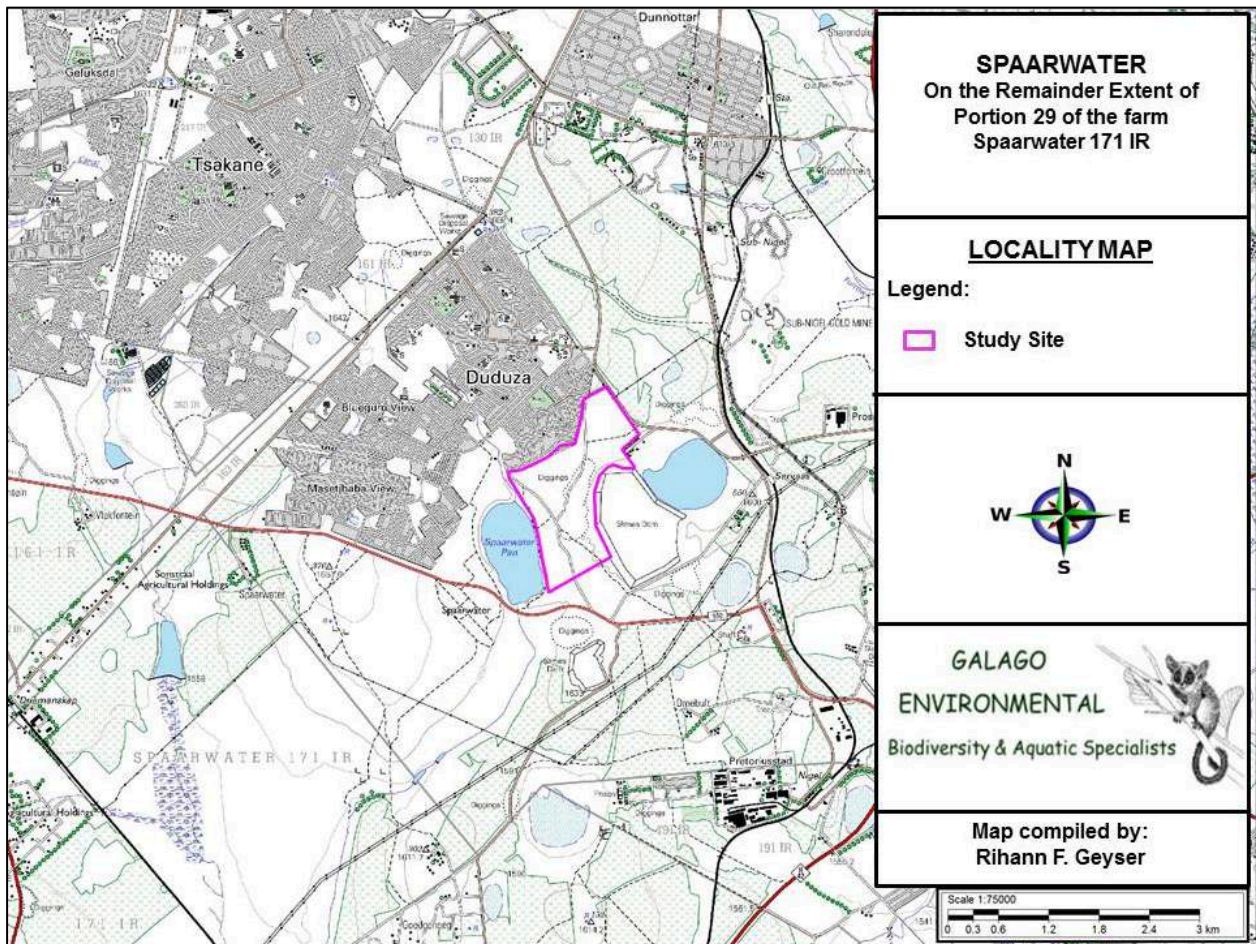


Figure 1: Location Map



Figure 2. Aerial view of the study area

METHODOLOGY

This study defines the heritage component of the Environmental Impact Assessment process. It is described as a first phase Heritage Impact Assessment (HIA). This report attempts to evaluate both the accumulated heritage knowledge of the area as well as information derived from direct physical observations.

EVALUATING HERITAGE IMPACTS

A combination of document research as well as the determination of the geographic suitability of areas and the evaluation of aerial photographs determined which areas could and should be accessed.

After plotting of the site on GPS the areas were accessed using suitable combinations of vehicle access and access by foot.

Sites were documented by digital photography and geo-located with GPS readings using the WGS 84 datum.

Further techniques included interviews with local inhabitants, visiting local museums and information centres and discussions with local experts. All this information was combined with information from an extensive literature study as well as the result of archival studies based on SAHRA provincial databases.

ASSESSING VISUAL IMPACT

Visual impacts of developments result when sites that are culturally celebrated are visually affected by a development. The exact parameters for the determination of visual impacts have not yet been rigidly defined and are still mostly open to interpretation. CNdV and DEAP (2006) have developed some guidelines for the management of the visual impacts of wind turbines in the Western Cape, although these have not yet been formalized. In these guidelines they recommend a buffer zone of 1km around significant heritage sites to minimize the visual impact.

PREVIOUS STUDIES IN THE AREA

Previous Studies in the Nigel Area:

- Tomose, N.G. 2014. A Heritage Impact Assessment Study for the Proposed Fortune Metaliks South Africa Nigel Steel Processing Plant, Pretoriusstad, Nigel, Ekurhuleni Metropolitan Municipality, Gauteng Province, South Africa.
- Van Der Walt, J. 2008. Archaeological Impact Assessment: Sluice Gate Upgrade at the Marrievale Nature Reserve, Nigel, Gauteng.
- Fourie, W. 2003. Van Ryn Open Cape Archaeological Survey CCT: Project: Nigel Gold Mining Company Pty Ltd: Cultural Heritage Survey
- Van Schalkwyk, J. & Pelsler, A. 2000. A Survey of Cultural Resources on the Farm Winterhoek 314 IR Nigel District, Gauteng.

Previous Studies in the Tsakane Area:

- Van Der Walt, J. 2008. Archeological Impact Assessment for the Proposed Tsakane Primary School, Tsakane Extension 9, Gauteng Province.
- Kusel, U. 2007. Cultural Heritage Resources Impact Assessment of the Farm Vlaklaagte 161 Tsakane Benoni Gauteng.

Previous Studies in the Springs Area:

- Van Der Walt, J. 2008. Archaeological Impact Assessment for the Chief Albert Luthuli Primary School, Springs, Gauteng Province.
- Birkholtz, P. 2008. Heritage Impact Assessment: Proposed Selcourt Ext 5 Residential Development of Portion 3 of the Farm Vlakfontein 103 IR, Ekurhuleni Metropolitan Municipality, Gauteng Province.
- Van Schalkwyk, J. 2004. Heritage Impact Assessment: Vlakfontein Ptn 35 & 36.
- Van Vollenhoven, A. 2012. A Report on a Heritage Impact Assessment for the Steynol Umthombo Project near Springs in the Gauteng Province.
- Van Vollenhoven, A. 2013. A Report on a Cultural Impact Assessment for a Proposed Shopping Mall Development close to Springs, Gauteng Province.
- Van Vollenhoven, A. 2012. A Report on a Cultural Heritage Impact Assessment for the Proposed Return Water Dam at the New Kleinfontein Gold Mine close to Springs, Gauteng Province.
- Van Der Walt, J. 2008. Archaeological Impact Assessment: Daggafontein Extension 6, Portions 107 of the Farm Daggafontein 125 IR, Springs, Gauteng Province.
- Van Schalkwyk, J. 2010. Heritage Impact Assessment for the Proposed Payneville Extension 1 Development, Springs Magisterial District, Gauteng Province.
- Van Vollenhoven, A. 2011. A Report on a Cultural Heritage Baseline Study and Impact Assessment for the Proposed New Kleinfontein Goldmine (Modder East Operations) close to Springs, Gauteng Province.
- Kaplan., J. 2013. Recommended Exemption from having to conduct an Archaeological Impact Study: The Proposed Impala Platinum Precious Metals Refinery Expansion Project in Springs, Gauteng Province.
- Pelsler, A & Van Vollenhoven, A. 2008. A Report on a Basic Archaeological Assessment for Apollo Bricks on the Farm Grootvaly 124 JR near Springs, Gauteng.
- Van Schalkwyk, J. & Mith, S. 1997. A Survey of Cultural Resources in the Proposed Erwat Sewer Outfall Route, North of Springs, Gauteng Province.
- Gagher S. 2014. Heritage Impact Assessment for the Proposed Ergo Road Residential Development, Springs, Ekurhuleni.
- Gagher, S. 2015. Heritage Impact Assessment for the Proposed Duduza Township Development.



HERITAGE INDICATORS WITHIN THE RECEIVING ENVIRONMENTS

REGIONAL CULTURAL CONTEXT

PALAEONTOLOGY

It is not anticipated that bedrock will be affected and as such no specific paleontological study was performed.

STONE AGE

No substantial number of Stone Age sites from any period of the Stone Age is known to exist in this area – primarily as a result of a lack of research and general ignorance amongst the layman in recognizing stone tools that often may occur. However, it is possible that the first humans in the Benoni area may have been preceded by *Homo erectus*, who roamed large parts of the world during the Acheulean period of the Early Stone Age, 500 000 years ago. The predecessors of *Homo erectus*, *Australopithecus*, which is considered to be the earliest ancestor of modern humans, lived in the Blaauwbank Valley around Krugersdorp (today part of the Cradle of Humankind – a World Heritage Site) several million years ago.

During the Middle Stone Age, 200 000 years ago, modern man or *Homo sapiens* emerged, manufacturing a wider range of tools, with technologies more advanced than those from earlier periods. This enabled skilled hunter-gatherer bands to adapt to different environments. From this time onwards, rock shelters and caves were used for occupation and reoccupation over very long periods of time (Mitchell 2002). Two Middle Stone Age sites at the Withoek Spruit (Brakpan) were researched 17 years ago, but no information on this discovery has been published.

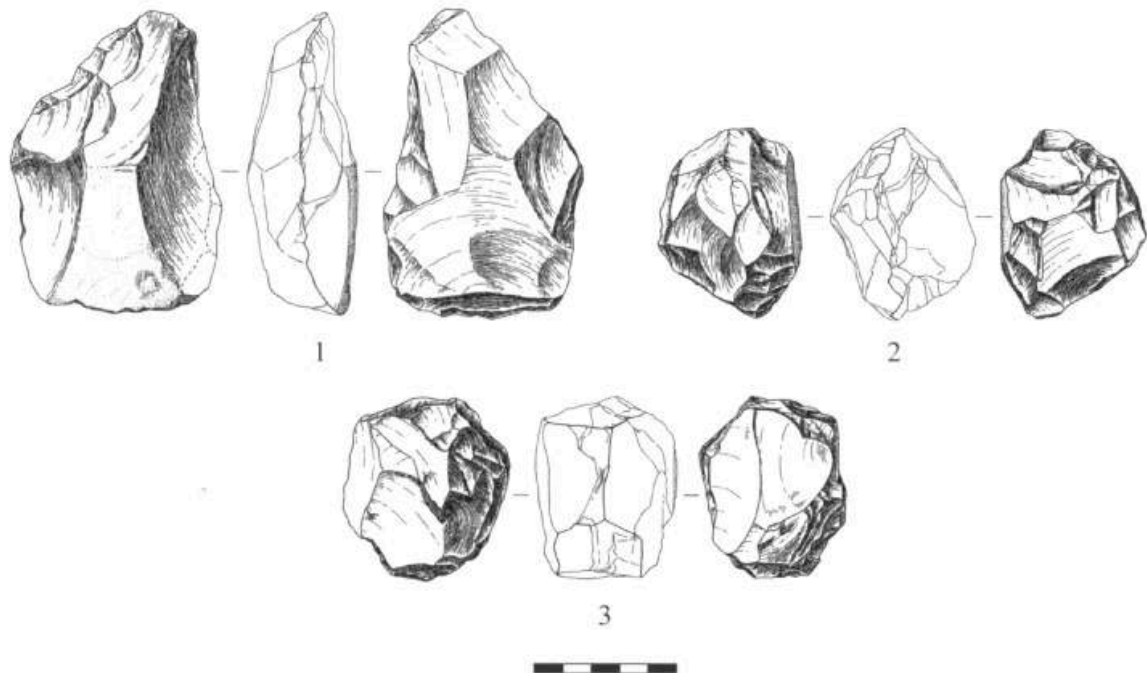


Figure 3. (1) handaxe on flake; (2) thick discoidal core; (3) polyhedral core (Pollarolo, Kuman, Bruxelles, 2010)

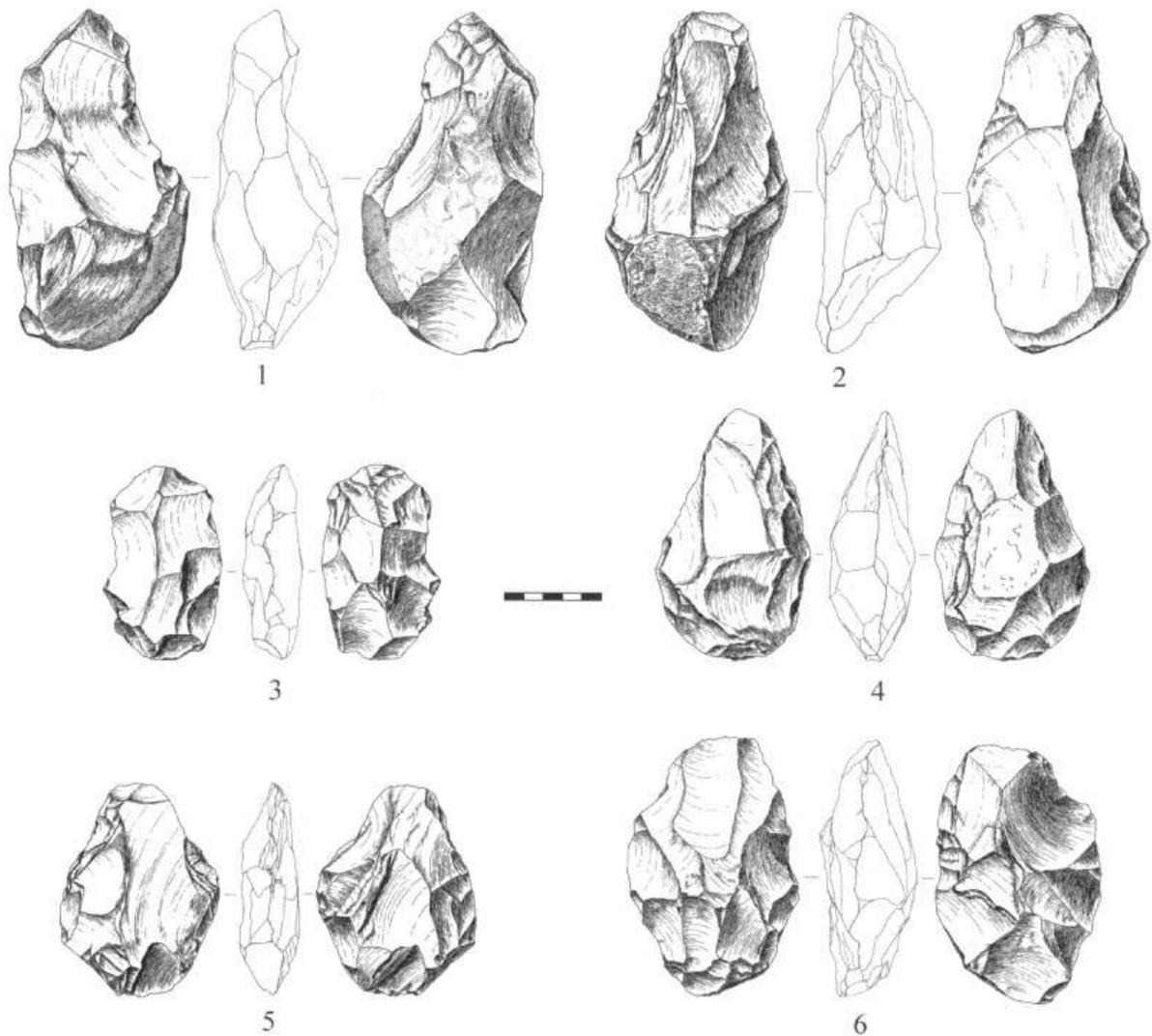


Figure 4. (1,2) Handaxes with large side removal; (3-6) handaxes (Pollarolo, Susino, Kuman, Bruxelles, 2010)

The Late Stone Age, considered to have started some 20 000 years ago, is associated with the predecessors of the San and Khoi Khoi. San hunter-gatherer bands with their small (microlithic) stone tools may have lived in Eastern Gauteng, as a magnificent engraving site near Duncanville attests to their presence in Vereeniging, south of, but close to Ekurhuleni. Stone Age hunter-gatherers lived well into the 19th century in some places in SA, but may not have been present in Brakpan when the first European colonists crossed the Vaal River during the early part of the 19th century. Stone Age sites may occur all over the area where an unknown number may have been obliterated by mining activities, urbanization, industrialization, agriculture and other development activities during the past decades (Morris 2004).

Reverent Patterson discovered some Stone Age deposits in Benoni during 1933, close to the train station. These were probably from the Middle to Late Stone Age.

IRON AGE

A considerable number of Late Iron Age, stone walled sites, dating from the 18th and the 19th centuries (some of which may have been occupied as early as the 16th century), occur along and on top of the rocky ridges of the eastern part of the Klipriviersberg towards Alberton. These settlements and features in these sites, such as huts, were built with dry stone, reed and clay available from the mountain and the Klip River (Mason 1968, 1986).

The Late Iron Age sites within Ekurhuleni's south-eastern border are a 'spill-over' from a larger concentration which are located further towards the west, in the Witwatersrand, while large concentrations of stone walled sites are also located directly to the south of Johannesburg, in the mountainous area around the Suikerbosrand in Heidelberg. The stone walled settlements are

concentrated in clusters of sites and sometimes are dispersed over large areas making them vulnerable to developments of various kinds. A site consists of a circular or elliptical outer wall that is composed of a number of scalloped walls facing inwards towards one or more enclosures. Whilst the outer scalloped walls served as dwelling quarters for various family groups, cattle, sheep and goat were stocked in the centrally located enclosures. Huts with clay walls and floors were built inside the dwelling units. Pottery and metal items are common on the sites. However, iron and copper were not produced locally on these sites (Killick 2004).

THE HISTORIC ERA

Date	Description
1886	The evolution of the region <i>Southern Transvaal</i> , its industrial development, rate of urban development and settlement pattern were greatly influenced by geology and mining, following the discovery of gold deposits in 1886.
1882 - 1888	Petrus Johannes Marais (nicknamed "Oom Lang Piet") owned the farm Varkensfontein in the Heidelberg district. Marais had an agreement with a prospector named Johnstone to prospect for gold on the farm. Johnstone kept the operations secret and one day a stranger arrived at Marais with an offer to purchase the farm. At the time Marais was reading the book "The Fortunes of Nigel" by Sir Walter Scott, a story about a man who was the victim of dishonest intrigue, but eventually achieved his goal in life. This led to Marais being suspicious of the stranger and he refused the offer to purchase. He began prospecting for himself and discovered gold on the farm in 1888. He attributed his luck to the book and therefore named his company "Nigel Gold Mining Company". In this way, the town of Nigel came into being.
1888	The State President, Paul Kruger, declared Nigel as a public digging under the notice no. 331.
1923	The town remained just a mining camp until 1923, when the control of the town was passed into the hands of a Dorpsvillage.
1920's – 1930's	The Sub Nigel Mine was opened and proved to be a lucrative operation. As a result a great influx of people occurred. Within 7 years the local authority's status was increased to Town Council in 1930. C.L. Mackle was elected as the first Mayor.
1934 - 1939	In these 5 years (hampered only by the outbreak of World War II), 5 new suburbs were proclaimed. A railway line between Springs, Nigel and Heidelberg was opened in October of 1935.
1946 – 1950's	The post World War II years saw pronounced growth in industrialization and urbanization of the <i>Southern Transvaal</i> .
1948	It was the discriminatory racial segregation (<i>apartheid</i>) legislation, enacted by the Nationalist Party (after coming to power in 1948) that extensively transformed the land-use. Citizens were separated into different townships according to their race with buffer strips of at least 100m wide or by environmental buffer zones.
1964	Duduza was established when Africans were resettled from Charterston, because it was considered to be too close to the "white" town.
1984 - 1987	Duduza was one of the most highly active townships in South Africa in the fight against <i>apartheid</i> . Violent demonstrations and rent boycotts were frequent and in July 1985 the South African Army was called in when the violence peaked. Duduza is recorded as the first place where a necklace mob burned a person to death using a tire filled with petrol.
2000	Nigel, with most of the East Rand, became part of the Ekurhuleni Metropolitan Municipality following the creation of the new local government structures.
2010	On 1 August a fire at the Pieter Wessels Old Age Home led to the death of 22 people.

Sources:

Nigel.co.za/History

Netlibrary.net/Articles/Nigel_Gauteng

www.gcro.ac.za



THE CULTURAL LANDSCAPE

Most of the proposed area is currently mostly vacant land with a residential settlement within the borders of the proposed development (north side of the site), a slimes dam along the eastern boundary and the Spaarwater Pan on the western side of the site.



Figure 5. Cultural Landscape

HISTORIC MAPS AND BUILT ENVIRONMENT

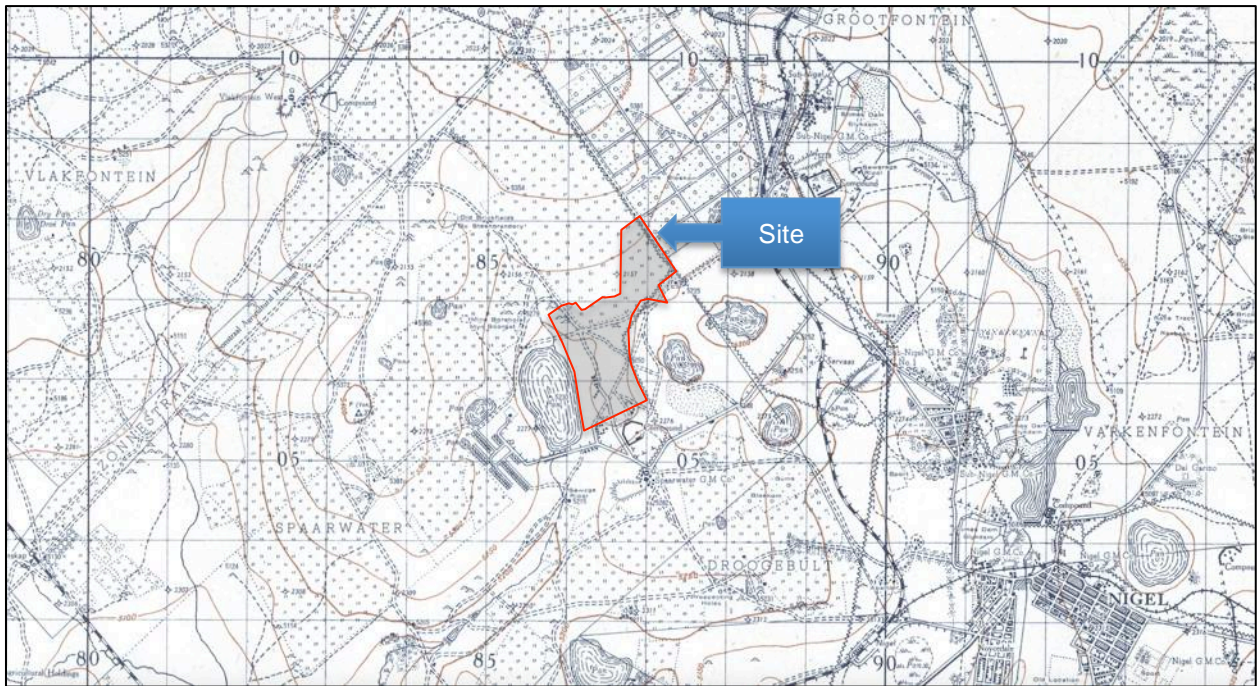


Figure 6. Topographical Map 2628 AD 1944

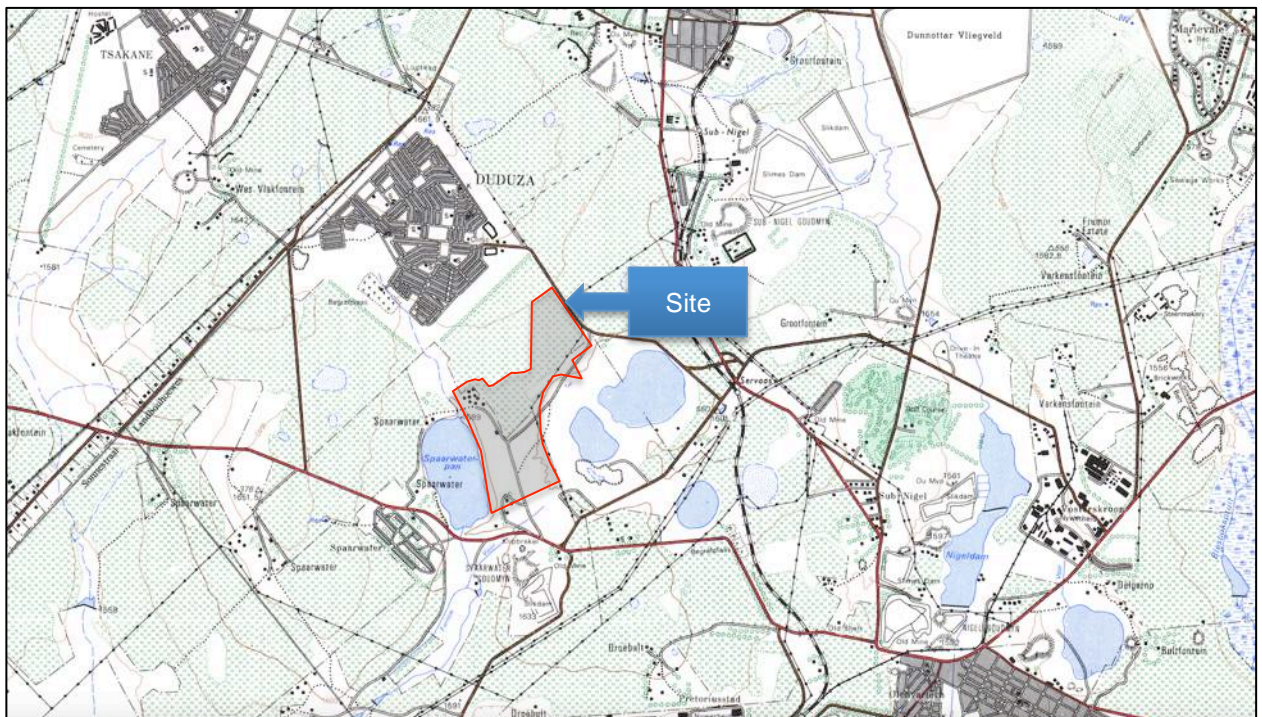


Figure 7. Topographical Map 2628 AD 1976



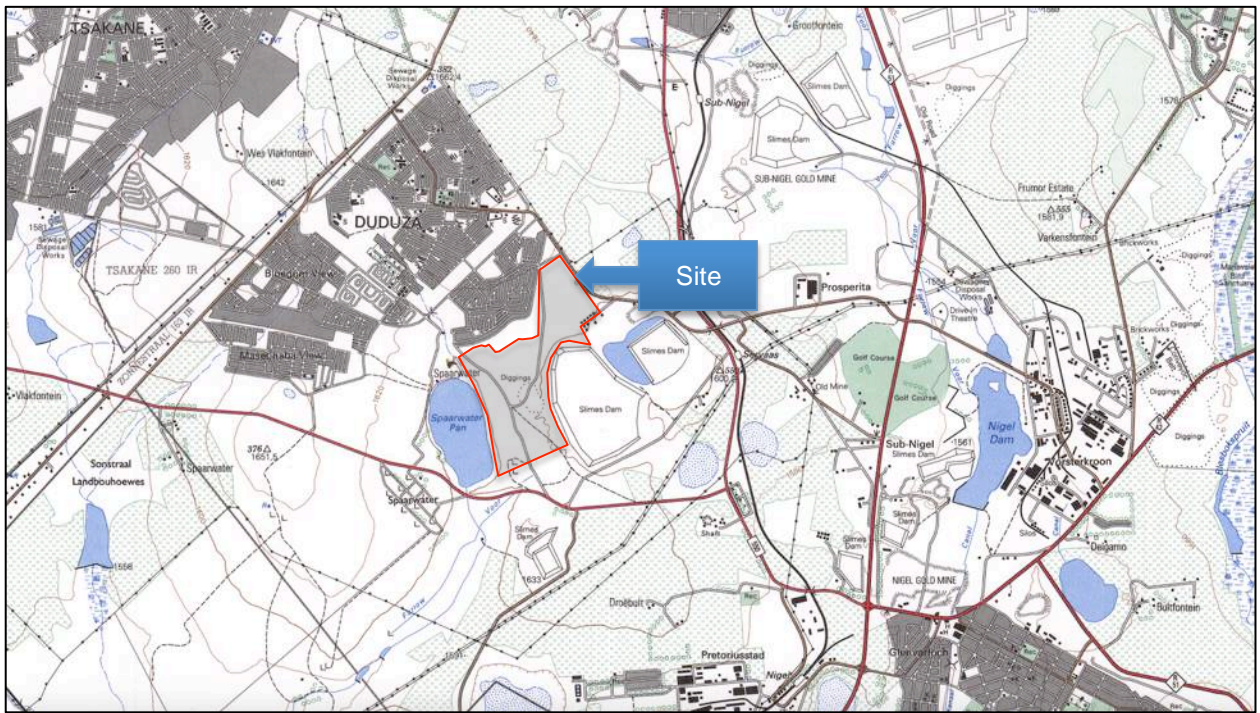


Figure 8. Topographical Map 2628 AD 1995

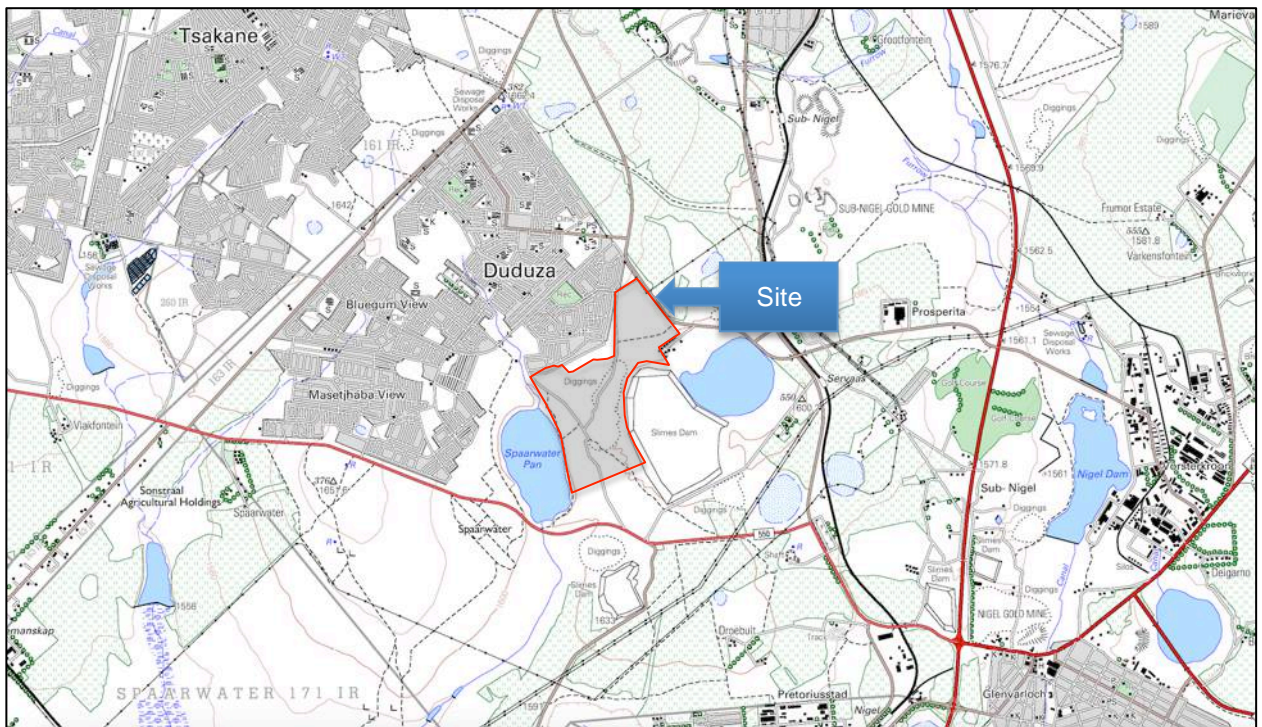


Figure 9. Topographical Map 2628 AD 2002



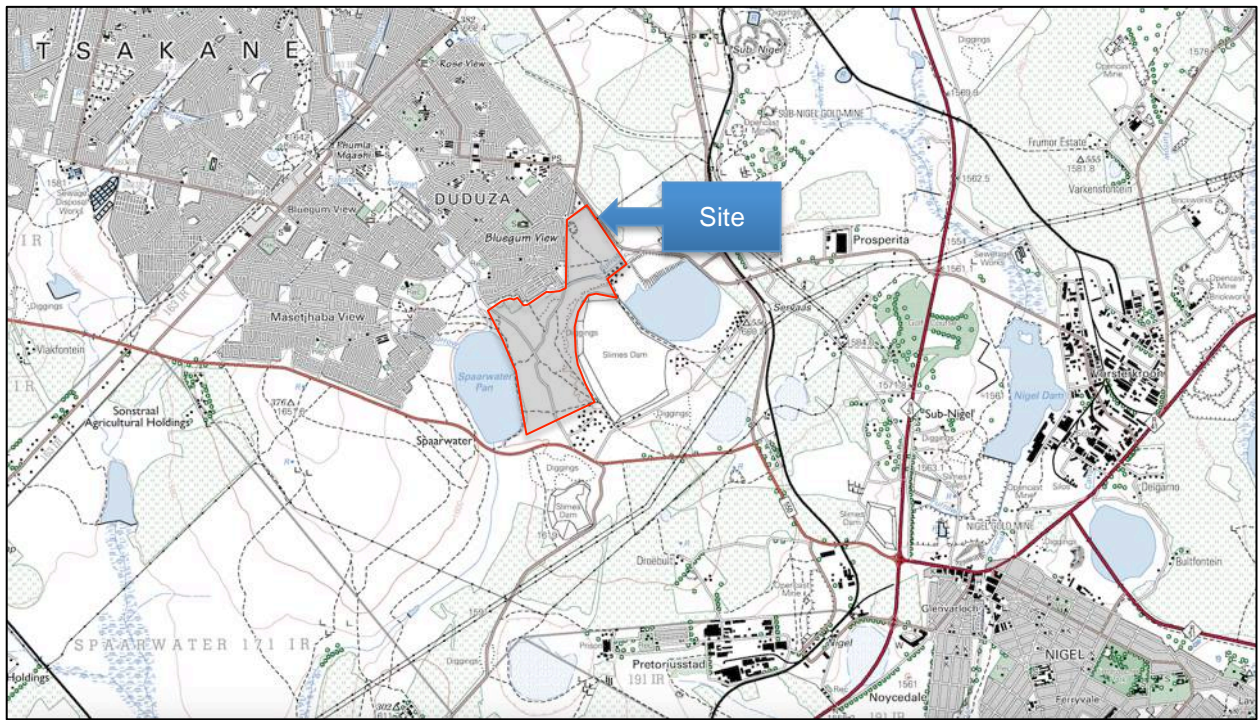


Figure 10. Topographical Map 2628 AD 2010

The above historic maps show that no development was documented on the study area from before 1944 and anything before that would have been present at 1944.

MEASURING AND EVALUATING THE CULTURAL SENSITIVITY OF THE STUDY AREA

In 2003 the South African Heritage Resource Agency (SAHRA) compiled the following guidelines to evaluate the cultural significance of individual heritage resources;

TYPE OF RESOURCE;

- Place
- Archaeological Site
- Structure
- Grave
- Paleontological Feature
- Geological Feature

TYPE OF SIGNIFICANCE

1. HISTORIC VALUE

It is important in the community, or pattern of history

- o Important in the evolution of cultural landscapes and settlement patterns
- o Important in exhibiting density, richness or diversity of cultural features illustrating the human occupation and evolution of the nation, province, region or locality.
- o Important for association with events, developments or cultural phases that have had a significant role in the human occupation and evolution of the nation, province, region or community.
- o Important as an example for technical, creative, design or artistic excellence, innovation or achievement in a particular period.

It has strong or special association with the life or work of a person, group or organisation of importance in history;

- o Importance for close associations with individuals, groups or organisations whose life, works or activities have been significant within the history of the nation, province, region or community.

It has significance relating to the history of slavery

- o Importance for a direct link to the history of slavery in South Africa.

2. AESTHETIC VALUE

It is important in exhibiting particular aesthetic characteristics valued by a community or cultural group.

- o Important to a community for aesthetic characteristics held in high esteem or otherwise valued by the community.
- o Importance for its creative, design or artistic excellence, innovation or achievement.
- o Importance for its contribution to the aesthetic values of the setting demonstrated by a landmark quality or having impact on important vistas or otherwise contributing to the identified aesthetic qualities of the cultural environs or the natural landscape within which it is located.
- o In the case of an historic precinct, importance for the aesthetic character created by the individual components which collectively form a significant streetscape, townscape or cultural environment.

3. SCIENTIFIC VALUE

It has potential to yield information that will contribute to an understanding of natural or cultural

heritage

- Importance for information contributing to a wider understanding of natural or cultural history by virtue of its use as a research site, teaching site, type locality, reference or benchmark site.
- Importance for information contributing to a wider understanding of the origin of the universe or of the development of the earth.
- Importance for information contributing to a wider understanding of the origin of life; the development of plant or animal species, or the biological or cultural development of hominid or human species.
- Importance for its potential to yield information contributing to a wider understanding of the history of human occupation of the nation, Province, region or locality.
- It is important in demonstrating a high degree of creative or technical achievement at a particular period
- Importance for its technical innovation or achievement.

4. SOCIAL VALUE

- It has strong or special association with a particular community or cultural group for social, cultural or spiritual reasons
- Importance as a place highly valued by a community or cultural group for reasons of social, cultural, religious, spiritual, symbolic, aesthetic or educational associations.
- Importance in contributing to a community's sense of place.

DEGREES OF SIGNIFICANCE

In 2006 SAHRA prescribed classification standards for determining the heritage significance of sites within the SADC region. These recommendations were subsequently approved by ASAPA and are reproduced here to indicate the measuring standards for heritage sensitivity used in this report;

Field Rating	Grade	Significance	Mitigation
National Significance (NS)	Grade 1	-	Conservation; National Heritage Site nomination
Provincial Significance (PS)	Grade 2	-	Conservation; Provincial Heritage Sites nomination
Local Significance (LS)	Grade 3A	High	Conservation; mitigation not advised
Local Significance (LS)	Grade 3B	High	Mitigation with part of site retained in original
Generally Protected A (GP.A)	-	High/Medium	Mitigation before destruction
Generally Protected B (GP.B)	-	Medium	Recording before destruction
Generally Protected C (GP.C)	-	Low	Destruction

Table 3. SAHRA Assigned Heritage Site Significance Grading

Assessment of Heritage Potential

Assessment Matrix

Determining Heritage Sensitivity

In addition to guidelines provided by the National Heritage Resources Act (Act No. 25 of 1999), a set of criteria based on Deacon (J) and Whitelaw (1997) for assessing archaeological significance has been developed for Northern Cape settings (Morris 2007a). These criteria include estimation of landform potential (in terms of its capacity to contain archaeological traces) and assessing the value to any archaeological traces (in terms of their attributes or their capacity to be construed as evidence, given that evidence is not given but constructed by the investigator).

Estimating site potential

Table 4 (below) is a classification of landforms and visible archaeological traces used for estimating the potential of archaeological sites (after J. Deacon and, National Monuments Council). Type 3 sites tend to be those with higher archaeological potential, but there are notable exceptions to this rule, for example the renowned rock engravings site Driekopseiland near Kimberley which is on landform L1 Type 1 – normally a setting of lowest expected potential. It should also be noted that, generally, the older a site the poorer the preservation, so that sometimes any trace, even of only Type 1 quality, could be of exceptional



significance. In light of this, estimation of potential will always be a matter for archaeological observation and interpretation.

Table 4. Classification of landforms and visible archaeological traces for estimating the potential for archaeological sites (after J. Deacon, NMC as used in Morris)

Class	Landform	Type 1	Type 2	Type 3
L1	Rocky Surface	Bedrock exposed	Some soil patches	Sandy/grassy patches
L2	Ploughed land	Far from water	In floodplain	On old river terrace
L3	Sandy ground, inland	Far from water	In floodplain or near features such as hill/dune	On old river terrace
L4	Sandy ground, coastal	>1 km from sea	Inland of dune cordon	Near rocky shore
L5	Water-logged deposit	Heavily vegetated	Running water	Sedimentary basin
L6	Developed urban	Heavily built-up with no known record of early settlement	Known early settlement, but buildings have basements	Buildings without extensive basements over known historical sites
L7	Lime/dolomite	>5 myrs	<5000 yrs	Between 5000 yrs and 5 myrs
L8	Rock shelter	Rocky floor	Loping floor or small area	Flat floor, high ceiling
Class	Archaeological traces	Type 1	Type 2	Type 3
A1	Area previously excavated	Little deposit remaining	More than half deposit remaining	High profile site
A2	Shell of bones visible	Dispersed scatter	Deposit <0.5 m thick	Deposit >0.5 m thick; shell and bone dense
A3	Stone artefacts or stone walling or other feature visible	Dispersed scatter	Deposit <0.5m thick	Deposit >0.5 m thick

Table 5. Site attributes and value assessment (adapted from Whitelaw 1997 as used in Morris)

Class	Landforms	Type 1	Type 2	Type 3
1	Length of sequence /context	No sequence Poor context Dispersed distribution	Limited sequence	Long sequence Favourable context High density of arte / ecofacts
2	Presence of exceptional items (incl. regional rarity)	Absent	Present	Major element
3	Organic preservation	Absent	Present	Major element
4	Potential for future archaeological investigation	Low	Medium	High
5	Potential for public display	Low	Medium	High
6	Aesthetic appeal	Low	Medium	High
7	Potential for implementation of a long-term management plan	Low	Medium	High

Assessing site value by attribute

Table 5 is adapted from Whitelaw (1997), who developed an approach for selecting sites meriting heritage recognition status in KwaZulu-Natal. It is a means of judging a site's archaeological value by ranking the relative strengths of a range of attributes (given in the second column of the table). While aspects of this matrix remain qualitative, attribute assessment is a good indicator of the general archaeological significance of a site, with Type 3 attributes being those of highest significance.



SIGNIFICANCE EVALUATION

As the criteria set out in the National Heritage Resources Act tend to approach heritage from the level of 'national' significance and few heritage sites and features fall within this category, a second set of criteria are used to determine the regional and local significance of heritage sites. Three sub-categories are used to determine this significance:

- Historical significance – this category determines the social context in which a heritage site and resource need to be assessed. These criteria focus on the history of the 'place' in terms of its significance in time and the role they played in a particular community (human context).
- Architectural significance – The objective of this set of criteria is to assess the artefactual significance of the heritage resource, its physical condition and meaning as an 'object'.
- Spatial significance – focuses on the physical context in which the object and place exists and how it contributed to the landscape, the region, the precinct and neighbourhood.

HISTORIC SIGNIFICANCE

No	Criteria	Significance Rating
1	Are any of the identified sites or buildings associated with a historical person or group? No	-
2	Are any of the buildings or identified sites associated with a historical event? No	-
3	Are any of the identified sites or buildings associated with a religious, economic social or political or educational activity? No	-
4	Are any of the identified sites or buildings of archaeological significance? No	-
5	Are any of the identified buildings or structures older than 60 years? No	-

ARCHITECTURAL SIGNIFICANCE

No	Criteria	Rating
1	Are any of the buildings or structures an important example of a building type? No	-
2	Are any of the buildings outstanding examples of a particular style or period? No	-
3	Do any of the buildings contain fine architectural details and reflect exceptional craftsmanship? No	-
4	Are any of the buildings an example of an industrial, engineering or technological development? No	-
5	What is the state of the architectural and structural integrity of the building? N/A	-
6	Is the building's current and future use in sympathy with its original use (for which the building was designed)? N/A	-
7	Were the alterations done in sympathy with the original design? N/A	-
8	Were the additions and extensions done in sympathy with the original	



	design? N/A	-
9	Are any of the buildings or structures the work of a major architect, engineer or builder? No	-

SPATIAL SIGNIFICANCE

Even though each building needs to be evaluated as single artefact the site still needs to be evaluated in terms of its significance in its geographic area, city, town, village, neighbourhood or precinct. This set of criteria determines the spatial significance.

No	Criteria	Rating
1	Can any of the identified buildings or structures be considered a landmark in the town or city? No	-
2	Do any of the buildings contribute to the character of the neighborhood? No	-
3	Do any of the buildings contribute to the character of the square or streetscape? No	-
4	Do any of the buildings form part of an important group of buildings? No	-

IMPACT EVALUATION

This HIA Methodology assists in evaluating the overall effect of a proposed activity on the heritage environment. The determination of the effect of a heritage impact on a heritage parameter is determined through a systematic analysis of the various components of the impact. This is undertaken using information that is available to the heritage practitioner through the process of the heritage impact assessment. The impact evaluation of predicted impacts was undertaken through an assessment of the significance of the impacts.

DETERMINATION OF SIGNIFICANCE OF IMPACTS

Significance is determined through a synthesis of impact characteristics, which include context, and intensity of an impact. Context refers to the geographical scale i.e. site, local, national or global whereas Intensity is defined by the severity of the impact e.g. the magnitude of deviation from background conditions, the size of the area affected, the duration of the impact and the overall probability of occurrence.

Significance is an indication of the importance of the impact in terms of both physical extent and time scale, and therefore indicates the level of mitigation required. The total number of points scored for each impact indicates the level of significance of the impact.

IMPACT RATING SYSTEM

Impact assessment must take account of the nature, scale and duration of effects on the heritage environment whether such effects are positive (beneficial) or negative (detrimental). Each issue / impact is also assessed according to the project stages:

- planning
- construction
- operation
- decommissioning

Where necessary, the proposal for mitigation or optimisation of an impact will be detailed. A brief discussion of the impact and the rationale behind the assessment of its significance has also been included.

RATING SYSTEM USED TO CLASSIFY IMPACTS

The rating system is applied to the potential impact on the receiving environment and includes an objective evaluation of the mitigation of the impact. Impacts have been consolidated into one rating. In assessing the significance of each issue the following criteria (including an allocated point system) is used:

NATURE		
Include a brief description of the impact of the heritage parameter being assessed in the context of the project. This criterion includes a brief written statement of the heritage aspect being impacted upon by a particular action or activity.		
GEOGRAPHICAL EXTENT		
This is defined as the area over which the impact will be expressed. Typically, the severity and significance of an impact have different scales and as such bracketing ranges are often required. This is often useful during the detailed assessment of a project in terms of further defining the determined.		
1	Site	The impact will only affect the site
2	Local/district	Will affect the local area or district
3	Province/region	Will affect the entire province or region
4	International and National	Will affect the entire country
PROBABILITY		
This describes the chance of occurrence of an impact		
1	Unlikely	The chance of the impact occurring is extremely low (Less than a 25% chance of occurrence).
2	Possible	The impact may occur (Between a 25% to 50% chance of occurrence).
3	Probable	The impact will likely occur (Between a 50% to 75% chance of occurrence).
4	Definite	Impact will certainly occur (Greater than a 75% chance of occurrence).
REVERSIBILITY		
This describes the degree to which an impact on a heritage parameter can be successfully reversed upon completion of the proposed activity.		
1	Completely reversible	The impact is reversible with implementation of minor mitigation measures
2	Partly reversible	The impact is partly reversible but more intense mitigation measures are required.
3	Barely reversible	The impact is unlikely to be reversed even with intense mitigation measures.
4	Irreversible	The impact is irreversible and no mitigation measures exist.
IRREPLACEABLE LOSS OF RESOURCES		
This describes the degree to which heritage resources will be irreplaceably lost as a result of a		



proposed activity.		
1	No loss of resource.	The impact will not result in the loss of any resources.
2	Marginal loss of resource	The impact will result in marginal loss of resources.
3	Significant loss of resources	The impact will result in significant loss of resources.
4	Complete loss of resources	The impact is result in a complete loss of all resources.
DURATION		
This describes the duration of the impacts on the heritage parameter. Duration indicates the lifetime of the impact as a result of the proposed activity		
1	Short term	The impact and its effects will either disappear with mitigation or will be mitigated through natural process in a span shorter than the construction phase (0 – 1 years), or the impact and its effects will last for the period of a relatively short construction period and a limited recovery time after construction, thereafter it will be entirely negated (0 – 2 years).
2	Medium term	The impact and its effects will continue or last for some time after the construction phase but will be mitigated by direct human action or by natural processes thereafter (2 – 10 years).
3	Long term	The impact and its effects will continue or last for the entire operational life of the development, but will be mitigated by direct human action or by natural processes thereafter (10 – 50 years).
4	Permanent	The only class of impact that will be non-transitory. Mitigation either by man or natural process will not occur in such a way or such a time span that the impact can be considered transient (Indefinite).
CUMULATIVE EFFECT		
This describes the cumulative effect of the impacts on the heritage parameter. A cumulative effect/impact is an effect, which in itself may not be significant but may become significant if added to other existing or potential impacts emanating from other similar or diverse activities as a result of the project activity in question.		
1	Negligible Cumulative Impact	The impact would result in negligible to no cumulative effects
2	Low Cumulative Impact	The impact would result in insignificant cumulative effects
3	Medium Cumulative impact	The impact would result in minor cumulative effects
4	High Cumulative Impact	The impact would result in significant cumulative effects
INTENSITY / MAGNITUDE		
Describes the severity of an impact		
1	Low	Impact affects the quality, use and integrity of the system/component in a way that is barely perceptible.

2	Medium	Impact alters the quality, use and integrity of the system/component but system/ component still continues to function in a moderately modified way and maintains general integrity (some impact on integrity).
3	High	Impact affects the continued viability of the system/component and the quality, use, integrity and functionality of the system or component is severely impaired and may temporarily cease. High costs of rehabilitation and remediation.
4	Very high	Impact affects the continued viability of the system/component and the quality, use, integrity and functionality of the system or component permanently ceases and is irreversibly impaired (system collapse). Rehabilitation and remediation often impossible. If possible rehabilitation and remediation often unfeasible due to extremely high costs of rehabilitation and remediation.
SIGNIFICANCE		
<p>Significance is determined through a synthesis of impact characteristics. Significance is an indication of the importance of the impact in terms of both physical extent and time scale, and therefore indicates the level of mitigation required. This describes the significance of the impact on the heritage parameter. The calculation of the significance of an impact uses the following formula:</p> <p>(Extent + probability + reversibility + irreplaceability + duration + cumulative effect) x magnitude/intensity.</p> <p>The summation of the different criteria will produce a non weighted value. By multiplying this value with the magnitude/intensity, the resultant value acquires a weighted characteristic which can be measured and assigned a significance rating.</p>		
Points	Impact Significance Rating	Description
6 to 28	Negative Low impact	The anticipated impact will have negligible negative effects and will require little to no mitigation.
6 to 28	Positive Low impact	The anticipated impact will have minor positive effects.
29 to 50	Negative Medium impact	The anticipated impact will have moderate negative effects and will require moderate mitigation measures.
29 to 50	Positive Medium impact	The anticipated impact will have moderate positive effects.
51 to 73	Negative High impact	The anticipated impact will have significant effects and will require significant mitigation measures to achieve an acceptable level of impact.
51 to 73	Positive High impact	The anticipated impact will have significant positive effects.
74 to 96	Negative Very high impact	The anticipated impact will have highly significant effects and are unlikely to be able to be mitigated adequately. These impacts could be considered "fatal flaws".

74 to 96	Positive Very high impact	The anticipated impact will have highly significant positive effects.
----------	---------------------------	---

ANTICIPATED IMPACT OF THE DEVELOPMENT

No heritage sites were documented within the boundaries of the study area, therefore the primary impacts of the development will be null.

RESOURCE MANAGEMENT RECOMMENDATIONS

Although unlikely, sub-surface remains of heritage sites could still be encountered during the construction activities associated with the project. Such sites would offer no surface indication of their presence due to the high state of alterations in some areas as well as heavy plant cover in other areas. The following indicators of unmarked sub-surface sites could be encountered;

- Ash deposits (unnaturally grey appearance of soil compared to the surrounding substrate)
- Bone concentrations, either animal or human
- Ceramic fragments such as pottery shards either historic or pre-contact
- Stone concentrations of any formal nature

Although no sites of heritage significance were identified within the proposed study area, the following recommendations are given should any sub-surface remains of heritage sites be identified as indicated above;

- All operators of excavation equipment should be made aware of the possibility of the occurrence of sub-surface heritage features and the following procedures should they be encountered.
- All construction in the immediate vicinity (50m radius of the site should cease).
- The heritage practitioner should be informed as soon as possible.
- In the event of obvious human remains the SAPS should be notified.
- Mitigative measures (such as refilling etc.) should not be attempted.
- The area in a 50m radius of the find should be cordoned off with hazard tape.
- Public access should be limited.
- The area should be placed under guard.
- No media statements should be released until such time as the heritage practitioner has had sufficient time to analyse the finds.

REFERENCES CITED & RESEARCHED

- Arts and Culture in the Ekurhuleni Metro Area, n.d. Published by the Ekurhuleni Metropolitan Municipality.
- Arts and Culture Task Group, (1995), Draft report for the Ministry of Arts, Culture, Science and Technology. *Pretoria: ACTAG.*
- Bewsher, P K, & De Jong, R C, (1997), Ecotourism and cultural resource management. Document prepared for the SA Wildlife College. Pretoria: Centre for Ecotourism.
- Canadian Parks Service, (1989). Proposed policy.
- Cultural Institutions Act, No 119 of 1998.
- De Jong, R.C., (1992). Draft policy guidelines for cultural resource management in nature conservation and forestry areas in South Africa. Pretoria: National Cultural History Museum (unpublished)
- Department of Arts, Culture, Science and Technology, (1996). White Paper on Arts, Culture and Heritage. Pretoria: SA Communication Service.
- DEAT, (1996). White Paper on the Development and Promotion of Tourism in South Africa. Pretoria: The Department.
- DEAT, (1998). A national strategy for Integrated Environmental Management in South Africa. Discussion document. Pretoria: The Department.
- DEAT, (1998). White Paper on environmental management policy for South Africa. Government Gazette, Vol 395, No 18894, 15 May 1998.
- Department of Public Works, (1998), White Paper 1997. Public Works towards the 21st century. Government Gazette, Vol 391, No 18616, 14 January 1998.
- *Cultural Heritage 146 Ekurhuleni SoER 2003*
- Entries on towns in the *Standard Encyclopedia of Southern Africa*, published by Nasou, 1970-1976 (11 volumes).
- Eskom Heritage website
- Files in Gauteng Office of SAHRA, Northwards, Parktown, Johannesburg
- Galla, A, (1996), Shifting the paradigm. A plan to diversify heritage practice in South Africa. Cape Town: South African Museums Association.
- Gauteng Department of Economic Affairs and Finance, (1997). Gauteng Tourism White Paper. Johannesburg: The Department.
- Hall, C.M, & McArthur, S. (eds), (1996). Heritage management in Australia and New Zealand. Draft publication.
- Harrison, R, (1994). Manual of heritage management. Oxford: Butterworth Heinemann.
- Jote, K, (1994). International legal protection of cultural heritage. Stockholm: Juristförlaget.
- Killick, D. 2004. Review Essay: "What Do We Know About African Iron Working?" *Journal of African Archaeology*. Vol 2 (1) pp. 135–152
- McCarthy, T.S. 2006. The Witwatersrand Supergroup. In: Johnson MR, Anhaeusser and Thomas RJ (Eds). *The Geology of South Africa*. Geological Society of South Africa, Johannesburg/Council



for Geoscience, Pretoria. pp 155-186.

- McCarthy, T.S. and Rubidge, B.S. 2005. The story of Earth and Life – a southern African perspective on the 4.6 billion year journey. Struik Publishers, Cape Town. pp 333.
- Mason, R. (1986). Origins of Black People of Johannesburg and the Southern Western Central Transvaal AD350-1880. Occasional Paper No. 16 of the Archaeological Research Unit.
- Musa, (1994). Museums for South Africa: Intersectoral investigation for national policy. Pretoria: MUSA Secretariat.
- National Heritage Council Act, No 11 of 1999.
- National Heritage Resources Act, No 25 of 1999.
- National Research Foundation, Nexus database of current and completed research projects
- Republic of South Africa, (1996). Constitution of the Republic of South Africa, Act 108 of 1996. Government Gazette, Vol 378, No 17678, 18 December 1996.
- Ross, M. (1996). Planning and the heritage. Policy and procedures. Second edition. London: E & FN Spon.
- SAHRA website <http://www.sahra.org.za>
- Stark, F, (1986). Germiston: The heart of South Africa. Germiston: Felstar Publishing.
- The City of Germiston: Official Guide, (1957). Germiston: Publicity Association.
- UNESCO, (1983). Conventions and recommendations concerning the protection of the cultural heritage. Paris: UNESCO.
- US National Parks Service, (1988). Management Policies.
- Webster, S, (1994). The Brakpan Story. Brakpan: Town Council.