

APPENDIX 1:

HIA DE RUST: PHOTOGRAPHS

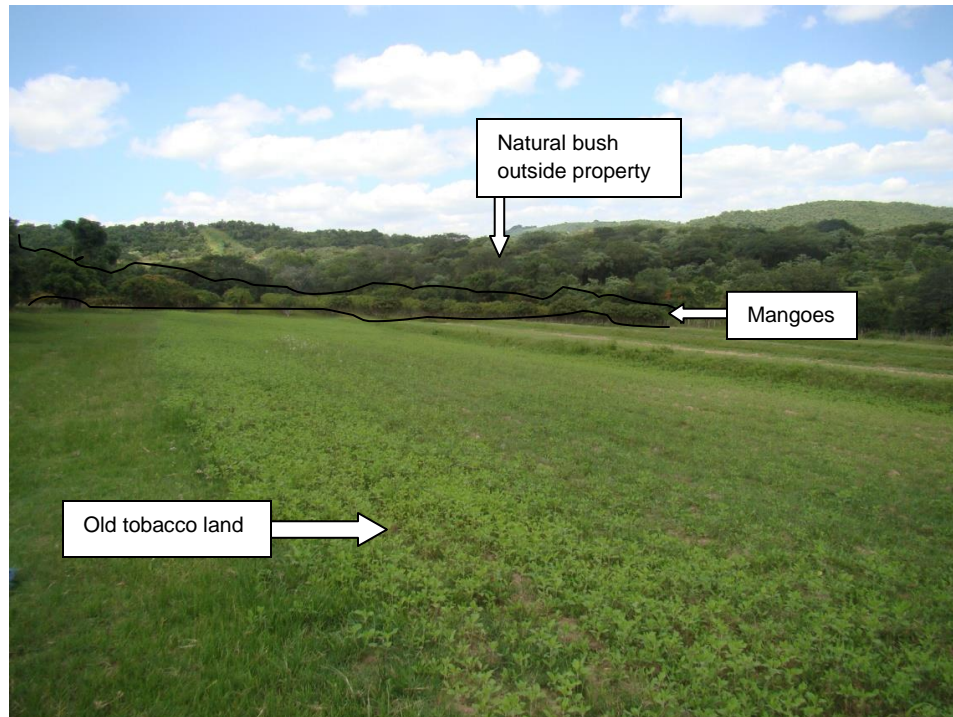


Fig. 1: An overview of the study area. The view is from north to south. The old tobacco lands are visible in the foreground with the mango trees in the background. The natural bush is outside the property.



Fig. 2: South-eastern corner: This entire section is planted with mango trees.



Fig. 3: South-western corner sloping towards a drainage line / dry stream bed.



Fig. 4: View of the north-western section, with old tobacco lands in foreground.



Fig. 5: North-eastern corner. Old mango trees fringe a previous cultivated land.



Fig. 6: The main house which was built in ca 1948.



Fig. 7: The front section of the main house with an outer building of the same style in the background.



Fig. 8: View from the main house with the tobacco fields barely visible in the background, sloping towards the drainage line / dry stream bed.



Fig. 9: View from the old tobacco lands towards the buildings. The vegetable garden is behind the pole fence.



Fig. 10: The dam and water tanks next to the fence and the R40 on the eastern side.



Fig. 11: Farm infrastructure. These structures are all of modern concrete bricks and not over 60 years old.



Fig. 12: A stormwater canal along the south border..