

## APPENDIX 6

### PHOTOGRAPHS OF THE STUDY AREA



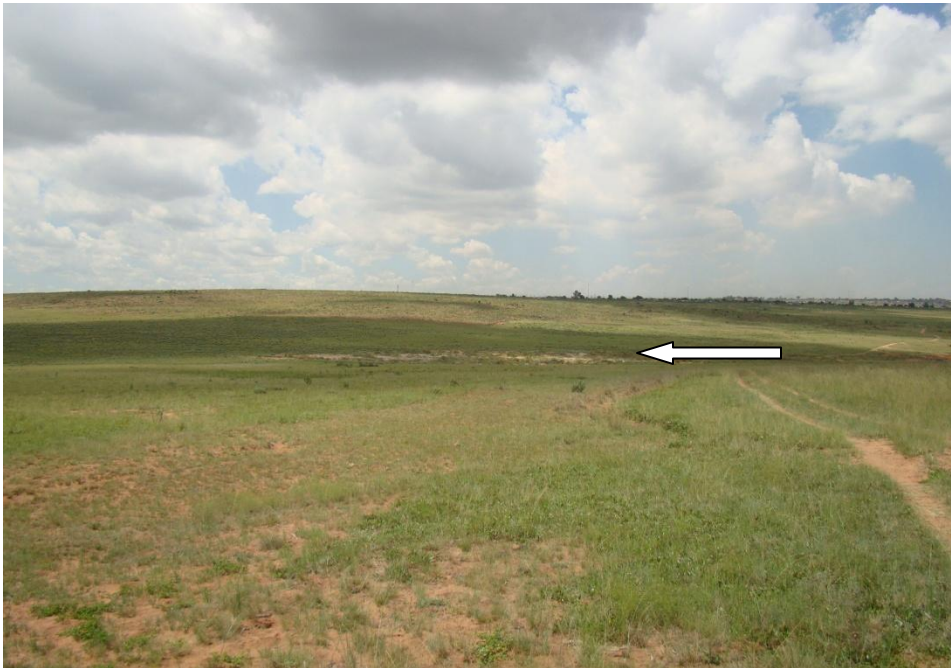
**Fig. 1: General view of the study area, with the Newtown informal settlement in the background towards the south. The picture was taken at the north-west point towards the south-east point.**



**Fig. 2: General view from the north-east point to the south-east point. The settlement is visible in the background.**



**Fig. 3: View from south-east corner over study area towards the north.**



**Fig. 4: View from north-west corner towards the south-west corner. Note the sand quarry in the middle of the photograph (See appendix 3).**





**Fig. 5: A square stone enclosure of 28 x 58m is recent and not of any historic value. (Not in the study area).**



**Fig. 6: A square stone foundation of 4 x 5m is recent and not of any historic value. (Not in the study area).**



**Fig. 7: Recent cattle / goat enclosures (not of any historic significance and outside the study area).**



**Fig. 8: The cemetery at the Newtown informal settlement, which is currently in use (not in study area).**





**Fig. 9: This round enclosure (1), in the informal settlement area is recent and outside the study area.**



**Fig. 10: Another round enclosure for goats is recent and of no significance. It is outside the study area.**



**Fig. 11: The sand quarry towards the west of the study area.**



**Fig. 12: The Eskom pylons are visible in this picture. Note the fenced sections where the inhabitants cultivate sections with maize.**