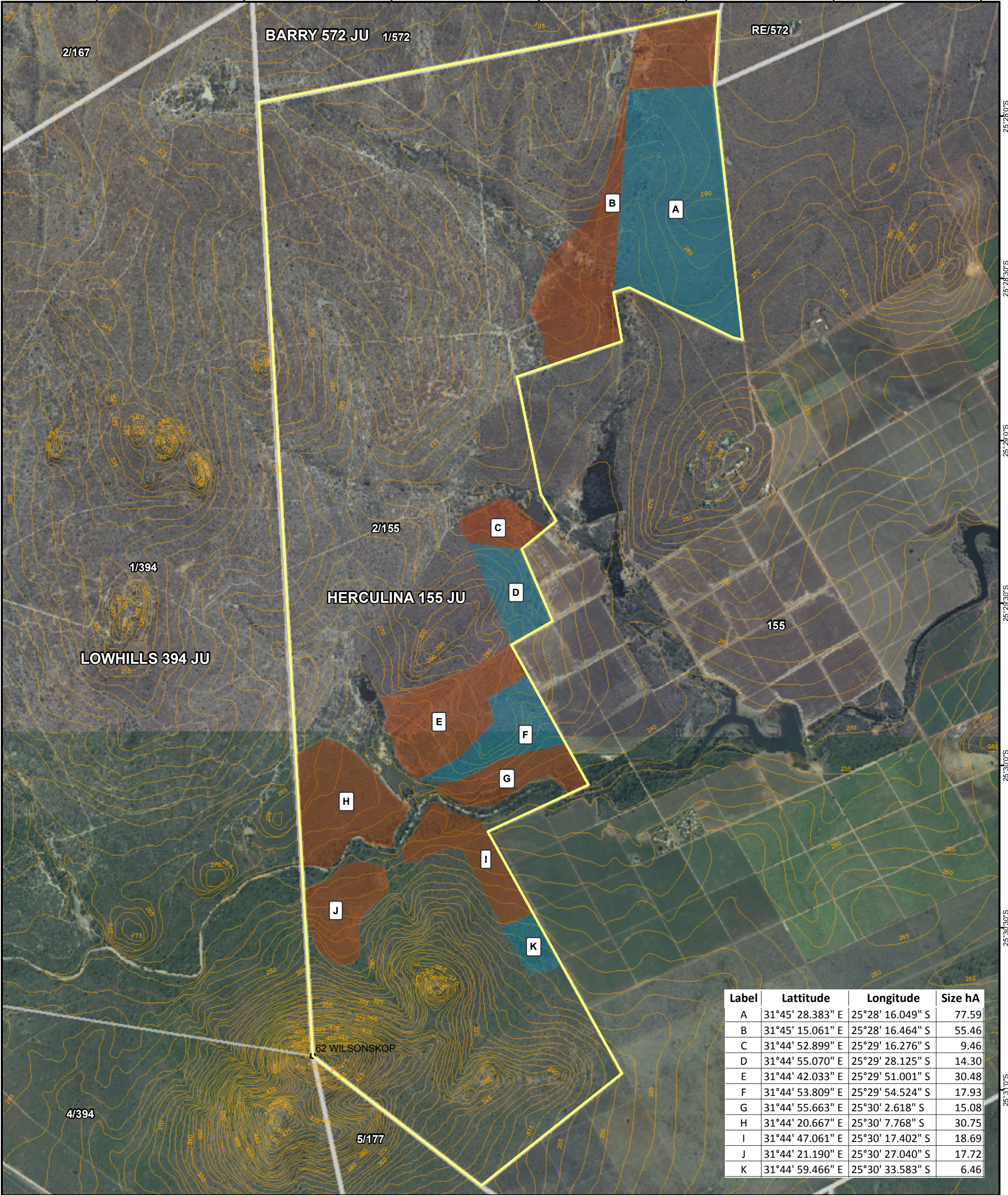
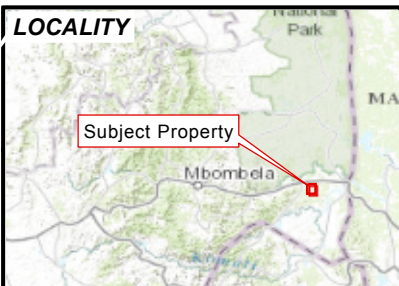


HERCULINA 155 JU

31°43'30"E 31°44'0"E 31°44'30"E 31°45'0"E 31°45'30"E 31°46'0"E 31°46'30"E



Label	Latitude	Longitude	Size ha
A	31°45' 28.383" E	25°28' 16.049" S	77.59
B	31°45' 15.061" E	25°28' 16.464" S	55.46
C	31°44' 52.899" E	25°29' 16.276" S	9.46
D	31°44' 55.070" E	25°29' 28.125" S	14.30
E	31°44' 42.033" E	25°29' 51.001" S	30.48
F	31°44' 53.809" E	25°29' 54.524" S	17.93
G	31°44' 55.663" E	25°30' 2.618" S	15.08
H	31°44' 20.667" E	25°30' 7.768" S	30.75
I	31°44' 47.061" E	25°30' 17.402" S	18.69
J	31°44' 21.190" E	25°30' 27.040" S	17.72
K	31°44' 59.466" E	25°30' 33.583" S	6.46

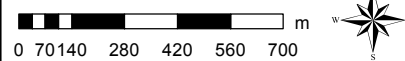


LEGEND

- Project Area
- Natural Bush
- Old Lands
- 5m Contours

Please Note: Data supplied on this map has been compiled from available cadastral data received from third parties. Any boundaries indicated are subject to final survey. Gismap cannot be held accountable for any inaccuracies contained within the received data.

Co-ordinate System: WGS84 TM31



PORTION 2

SCALE: 1:20,000 1 cm = 200 m
DATE: 14 July 2015 EST No: SME150626/1824