



Archaetnos Culture & Cultural
Resource Consultants
BK 98 09854/23

**A REPORT ON A CULTURAL HERITAGE IMPACT ASSESSMENT FOR THE
CONSTRUCTION OF A SCHOOL AND ASSOCIATED WATER PIPELINE ON THE
REMAINDER OF THE FARM GENERAALSDRAAI 429 JS AND THE REMAINDER
OF PORTION 16 OF GENERAALSDRAAI 423 JS, WONDERFONTEIN,
MPUMALANGA PROVINCE**

For:

**ADIENVIRONMENTAL
PO Box 647
Witbank
1035**

REPORT NO.: AE01706V

By:

***Prof. A.C. van Vollenhoven (L.AKAD.SA.)
Accredited member of ASAPA (Accreditation number: 166)
Accredited member of SASCH (Accreditation number: CH001)***

17 March 2017

Archaetnos
P.O. Box 55
GROENKLOOF
0027
Tel: 083 291 6104
Fax: 086 520 4173
E-mail: antonv@archaetnos.co.za

Member: AC van Vollenhoven BA, BA (Hons), DTO, NDM, MA (Archaeology) [UP], MA (Culture History) [US], DPhil (Archaeology) [UP], Man Dip [TUT], D Phil (History) [US]

SUBMISSION OF REPORT

Please note that the South African Heritage Resources Agency (SAHRA) or one of its subsidiary bodies needs to comment on this report.

It is the client's responsibility to do the submission via the SAHRIS System on the SAHRA website.

Clients are advised not to proceed with any action before receiving the necessary comments from SAHRA.

DISCLAIMER

Although all possible care is taken to identify all sites of cultural importance during the survey of study areas, the nature of archaeological and historical sites are as such that it always is possible that hidden or subterranean sites could be overlooked during the study. Archaetnos and its personnel will not be held liable for such oversights or for costs incurred as a result thereof.

Should it be necessary to visit a site again as a result of the above mentioned, an additional appointment is required.

Reasonable editing of the report will be done upon request by the client if received within 60 days of the report date. However editing will only be done once and clients are therefore requested to send all possible changes in one request. Any format changes or changes requested due to insufficient or faulty information provided to Archaetnos on appointment, will only be done by additional appointment.

Any changes to the scope of a project will require an additional appointment.

**©Copyright
Archaetnos**

The information contained in this report is the sole intellectual property of Archaetnos CC. It may only be used for the purposes it was commissioned for by the client.

EXECUTIVE SUMMARY

Purpose:

Archaetnos cc was requested by AdiEnvironmental CC to conduct a cultural heritage impact assessment (HIA) for the construction of a school and associated water pipeline on the Remainder of the farm Generaalsdraai 429 JS and the Remainder of portion 16 of the farm Generaalsdraai 423 JS. The proposed development currently is in the Basic Assessment phase.

Project description:

Umsimibithi Mining (Pty) Ltd. intends to relocate Morelig Combined School to the indicated farm, close to the Afgri Silo's. Services (i.e. water, pipelines, boreholes, sewage, package plant, etc.) will be installed as part of the project.

Methodology:

The methodology for the study includes a survey of literature and a field survey. The latter was conducted according to generally accepted HIA practices and was aimed at locating all possible objects, sites and features of cultural significance in the area of proposed development.

If required, the location/position of any site was determined by means of a Global Positioning System (GPS), while photographs were also taken where needed. The survey was undertaken by doing a physical survey via off-road vehicle and on foot and covered as much as possible of the area to be studied. Certain factors, such as accessibility, density of vegetation, etc. may however influence the coverage.

All sites, objects features and structures identified were documented according to the general minimum standards accepted by the archaeological profession. Co-ordinates of individual localities were determined by means of the Global Positioning System (GPS). The information was added to the description in order to facilitate the identification of each locality.

Public consultation:

Public consultation was handled by AdiEnvironmental CC. Newspaper notices were placed on 10 February 2017. Site notices were placed on site on 10 February 2017.

Findings:

During the survey no sites of cultural heritage significance were identified within the immediate project area.

Some Iron Age sites were however noted on Google Earth, reasonably close thereto.

Recommendations:

The report is seen as ample mitigation and the proposed development may continue, but only after it had been approved by SAHRA.

The developer should ensure that they steer clear of the Iron Age features that were noted towards the north and east of the project area.

It should be noted that the subterranean presence of archaeological and/or historical sites, features or artifacts is always a distinct possibility. Due to the density of vegetation it also is possible that some sites may only become known later on. Operating controls and monitoring should therefore be aimed at the possible unearthing of such features. Care should therefore be taken when development commences that if any of these are discovered, a qualified archaeologist be called in to investigate the occurrence.

It is also important to take cognizance that it is the client's responsibility to do the submission of this report via the SAHRIS System on the SAHRA website. No work on site may commence before receiving the necessary comments from SAHRA.

CURRICULUM VITAE OF SPECIALIST: PROF ANTON CARL VAN VOLLENHOVEN

Tertiary education

- BA 1986, University of Pretoria
- BA (HONS) Archaeology 1988 (cum laude), University of Pretoria
- MA Archaeology 1992, University of Pretoria
- Post-Graduate Diploma in Museology 1993 (cum laude), University of Pretoria
- Diploma Tertiary Education 1993, University of Pretoria
- DPhil Archaeology 2001, University of Pretoria.
- MA Cultural History 1998 (cum laude), University of Stellenbosch
- Management Diploma 2007 (cum laude), Tshwane University of Technology
- DPhil History 2010, University of Stellenbosch

Employment history

- *1988-1991*: Fort Klapperkop Military Museum - Researcher
- *1991-1999*: National Cultural History Museum. Work as Archaeologist, as well as Curator/Manager of Pioneer Museum (1994-1997)
- *1999-2002*: City Council of Pretoria. Work as Curator: Fort Klapperkop Heritage Site and Acting Deputy Manager Museums and Heritage.
- *2002-2007*: City of Tshwane Metropolitan Municipality. Work as Deputy Manager Museums and Heritage.
- *August 2007* – present – Managing Director for Archaetnos Archaeologists.
- *1988-2003*: Part-time lecturer in Archaeology at the University of Pretoria and a part-time lecturer on Cultural Resources Management in the Department of History at the University of Pretoria.
- *2014*: Part-time lecturer for the Honours degree in Museum Sciences in the Department of History and Heritage Studies at the University of Pretoria
- *2015*: Appointed extraordinary professor in history at the Mafikeng Campus of the Northwest University

Other

- Published 75 articles in scientific and popular journals on archaeology and history.
- Author and co-author of over 580 unpublished reports on cultural resources surveys and archaeological work. A list of reports can be viewed on www.archaetnos.co.za
- Published a book on the Military Fortifications of Pretoria.
- Contributed to a book on Mapungubwe.
- Delivered more than 50 papers and lectures at national and international conferences.
- Member of SAHRA Council for 2003 – 2006.
- Member of the South African Academy for Science and Art.
- Accredited professional member of Association for South African Professional Archaeologists.
- Accredited professional member of the South African Society for Cultural History (Chairperson 2006-2008; 2012-2014).
- Has been editor for the SA Journal of Cultural History 2002-2004.
- Member of the Provincial Heritage Resources Agency, Gauteng's Council.
- Member of Provincial Heritage Resources Agency, Gauteng's HIA adjudication committee (Chairperson 2012-2019).

ASAPA Accreditation number: 166

SASCH Accreditation number: CH001

DECLARATION OF INDEPENDENCE

I, Anton Carl van Vollenhoven from Archaetnos, hereby declare that I am an independent specialist within the field of heritage management.

Signed:

A rectangular image showing a handwritten signature in dark ink on a light-colored, textured paper background. The signature is cursive and appears to read 'Anton Carl van Vollenhoven'.

Date: 17 March 2017

CONTENTS

	Page
EXECUTIVE SUMMARY	3
CURRICULUM VITAE OF SPECIALIST	5
DECLARATION OF INDEPENDENCE	6
CONTENTS	7
LIST OF ACRONYMS.....	8
1. INTRODUCTION.....	9
2. TERMS OF REFERENCE.....	13
3. LEGISLATIVE REQUIREMENTS.....	13
4. METHODOLOGY	17
5. ASSUMPTIONS, GAPS, RESTRICTIONS, CONDITIONS AND LIMITATIONS	22
6. DESCRIPTION OF THE SOCIO-ECONOMIC ENVIRONMENT.....	23
7. DESCRIPTION OF THE PHYSICAL ENVIRONMENT	23
8. RESULTS OF PUBLIC CONSULTATION AND STAKEHOLDER ENGAGEMENT	27
9. HISTORICAL CONTEXT.....	27
10. CONCLUSIONS AND RECOMMENDATIONS.....	30
11. REFERENCES.....	31
APPENDIX A – DEFINITION OF TERMS.....	32
APPENDIX B – DEFINITION/ STATEMENT OF SIGNIFICANCE	33
APPENDIX C – SIGNIFICANCE AND FIELD RATING	34
APPENDIX D – PROTECTION OF HERITAGE RESOURCES.....	36
APPENDIX E – HERITAGE MANAGEMENT IMPACT ASSESSMENT PHASES.....	37

LIST OF ACRONYMS:

AIA – Archaeological Impact Assessment
CMP – Cultural Management Plan
EAP – Environmental Assessment Practitioner
EIA – Environmental Impact Assessment
HIA – Heritage Impact Assessment
PIA – Palaeontological Impact Assessment
SAHRA –South African Heritage Resources Agency

1. INTRODUCTION

Archaetnos cc was requested by AdiEnvironmental CC to conduct a cultural heritage impact assessment (HIA) for the construction of a school and associated water pipeline on the Remainder of the farm Generaalsdraai 429 JS and the Remainder of portion 16 of the farm Generaalsdraai 423 JS. This is close to the town of Wonderfontein in the Mpumalanga Province (Figure 1-4).

The local municipality in which the site falls is Emakhazeni and the district municipality Nkangala. A central co-ordinate of the development is 25°47'37.73"S; 29°54'28.04"E. The 1:50 000 map sheet number is 2529DD.

Umsimibithi Mining (Pty) Ltd. intends to relocate Morelig Combined School to the indicated farm, close to the Afgri Silo's. Services (i.e. water, pipelines, boreholes, sewage, package plant, etc.) will be installed as part of the project. The heritage study forms part of a Basic Assessment.



FIGURE 1: LOCATION OF WONDERFONTEIN CLOSE TO BELFAST IN THE MPUMALANGA PROVINCE.

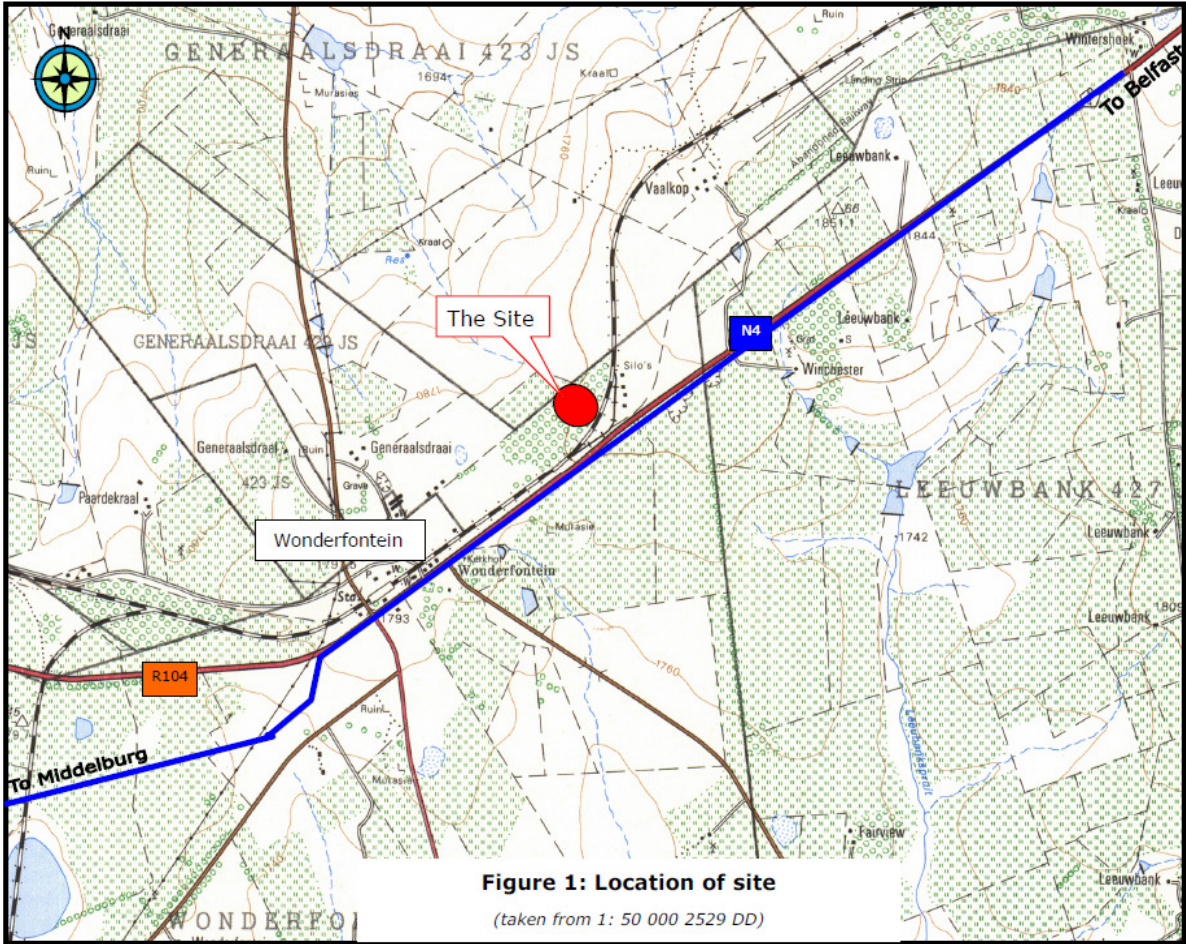


FIGURE 2: LOCATION OF THE SITE (ADIENVIRONMENTAL).

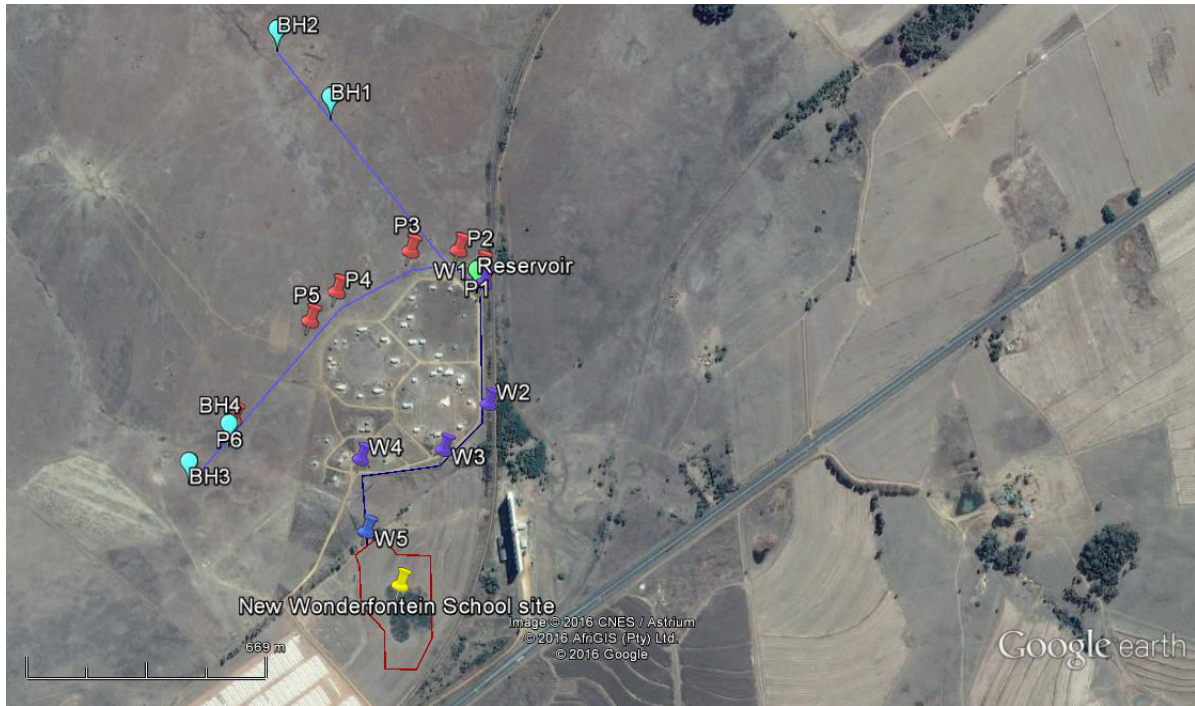


FIGURE 3: GOOGLE EARTH IMAGE INDICATING THE SITE, PIPELINES AND BOREHOLES.

P1-P5 – CO-ORDINATES FOR PUMPING MAINS

W1-W5 – CO-ORDINATES FOR WATERLINE

BH1-BH4 - BOREHOLES

————— - 90 WATERLINE

————— - 75 WATERLINE

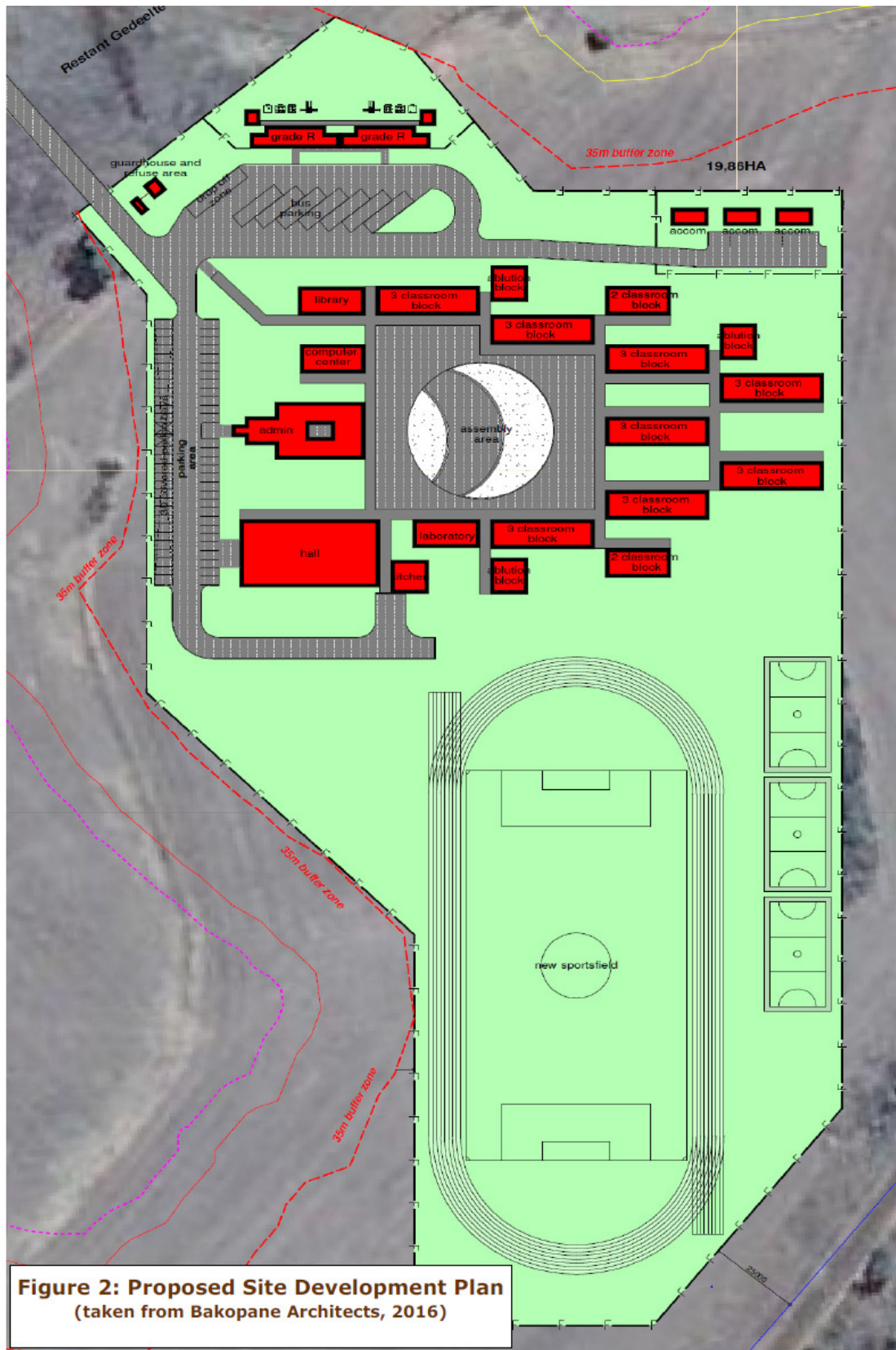


FIGURE 4: SITE DEVELOPMENT PLAN (ADIENVIRONMENTAL).

2. TERMS OF REFERENCE

The Terms of Reference for the survey were to:

1. Identify objects, sites, occurrences and structures of an archaeological or historical nature (cultural heritage sites) located on the property (see Appendix A).
2. Document the found cultural heritage sites according to best practice standards for heritage related studies.
3. Study background information on the area to be developed.
4. Assess the significance of the cultural resources in terms of their archaeological, historical, scientific, social, religious, aesthetic and tourism value (see Appendix B).
5. Describe the possible impact of the proposed development on these cultural remains, according to a standard set of conventions.
6. Recommend suitable mitigation measures to minimize possible negative impacts on the cultural resources by the proposed development.
7. Review applicable legislative requirements.

3. LEGISLATIVE REQUIREMENTS

Aspects concerning the conservation of cultural resources are dealt with mainly in two acts. The first of these are the National Heritage Resources Act (Act 25 of 1999) which deals with the cultural heritage of the Republic of South Africa. The second is the National Environmental Management Act (Act 107 of 1998) which inter alia deals with cultural heritage as part of the Environmental Impact Assessment process.

3.1 The National Heritage Resources Act

According to the above-mentioned act the following is protected as cultural heritage resources:

- a. Archaeological artifacts, structures and sites older than 100 years
- b. Ethnographic art objects (e.g. prehistoric rock art) and ethnography
- c. Objects of decorative and visual arts
- d. Military objects, structures and sites older than 75 years
- e. Historical objects, structures and sites older than 60 years
- f. Proclaimed heritage sites
- g. Grave yards and graves older than 60 years
- h. Meteorites and fossils

- i. Objects, structures and sites of scientific or technological value.

The national estate (see Appendix D) includes the following:

- a. Places, buildings, structures and equipment of cultural significance
- b. Places to which oral traditions are attached or which are associated with living heritage
- c. Historical settlements and townscapes
- d. Landscapes and features of cultural significance
- e. Geological sites of scientific or cultural importance
- f. Archaeological and paleontological importance
- g. Graves and burial grounds
- h. Sites of significance relating to the history of slavery
- i. Movable objects (e.g. archaeological, paleontological, meteorites, geological specimens, military, ethnographic, books etc.)

A Heritage Impact Assessment (HIA) is the process to be followed in order to determine whether any heritage resources are located within the area to be developed as well as the possible impact of the proposed development thereon. An Archaeological Impact Assessment (AIA) only looks at archaeological resources.

A Palaeontological Impact Assessment (PIA) is an assessment of palaeontological heritage. Palaeontology is a different field of study, and although also sometimes required by the South African Heritage Resources Agency (SAHRA)¹, should be done by a professional palaeontologist.

The different phases during the HIA process are described in Appendix E. An HIA must be done under the following circumstances:

- a. The construction of a linear development (road, wall, power line canal etc.) exceeding 300m in length
- b. The construction of a bridge or similar structure exceeding 50m in length
- c. Any development or other activity that will change the character of a site and exceed 5 000m² or involve three or more existing erven or subdivisions thereof
- d. Re-zoning of a site exceeding 10 000 m²
- e. Any other category provided for in the regulations of SAHRA or a provincial heritage authority

Structures

Section 34 (1) of the mentioned act states that no person may demolish any structure or part thereof which is older than 60 years without a permit issued by the relevant provincial heritage resources authority.

¹ Please consult SAHRA to determine whether a PIA is necessary.

A structure means any building, works, device or other facility made by people and which is fixed to land, and includes any fixtures, fittings and equipment associated therewith.

Alter means any action affecting the structure, appearance or physical properties of a place or object, whether by way of structural or other works, by painting, plastering or the decoration or any other means.

Archaeology, palaeontology and meteorites

Section 35(4) of this act deals with archaeology, palaeontology and meteorites. The act states that no person may, without a permit issued by the responsible heritage resources authority (national or provincial):

- a. destroy, damage, excavate, alter, deface or otherwise disturb any archaeological or paleontological site or any meteorite;
- b. destroy, damage, excavate, remove from its original position, collect or own any archaeological or paleontological material or object or any meteorite;
- c. trade in, sell for private gain, export or attempt to export from the Republic any category of archaeological or paleontological material or object, or any meteorite; or
- d. bring onto or use at an archaeological or paleontological site any excavation equipment or any equipment that assists in the detection or recovery of metals or archaeological and paleontological material or objects, or use such equipment for the recovery of meteorites.
- e. alter or demolish any structure or part of a structure which is older than 60 years as protected.

The above mentioned may only be disturbed or moved by an archaeologist, after receiving a permit from the South African Heritage Resources Agency (SAHRA). In order to demolish such a site or structure, a destruction permit from SAHRA will also be needed.

Human remains

Graves and burial grounds are divided into the following:

- a. ancestral graves
- b. royal graves and graves of traditional leaders
- c. graves of victims of conflict
- d. graves designated by the Minister
- e. historical graves and cemeteries
- f. human remains

In terms of Section 36(3) of the National Heritage Resources Act, no person may, without a permit issued by the relevant heritage resources authority:

- a. destroy, damage, alter, exhume or remove from its original position or otherwise disturb the grave of a victim of conflict, or any burial ground or part thereof which contains such graves;
- b. destroy, damage, alter, exhume or remove from its original position or otherwise disturb any grave or burial ground older than 60 years which is situated outside a formal cemetery administered by a local authority; or
- c. bring onto or use at a burial ground or grave referred to in paragraph (a) or (b) any excavation, or any equipment which assists in the detection or recovery of metals.

Unidentified/unknown graves are also handled as older than 60 until proven otherwise.

Human remains that are less than 60 years old are subject to provisions of the Human Tissue Act (Act 65 of 1983) and to local regulations. Exhumation of graves must conform to the standards set out in the **Ordinance on Excavations (Ordinance no. 12 of 1980)** (replacing the old Transvaal Ordinance no. 7 of 1925).

Permission must also be gained from the descendants (where known), the National Department of Health, Provincial Department of Health, Premier of the Province and local police. Furthermore, permission must also be gained from the various landowners (i.e. where the graves are located and where they are to be relocated) before exhumation can take place. Human remains can only be handled by a registered undertaker or an institution declared under the **Human Tissues Act (Act 65 of 1983 as amended)**.

3.2 The National Environmental Management Act

This act (Act 107 of 1998) states that a survey and evaluation of cultural resources must be done in areas where development projects, that will change the face of the environment, will be undertaken. The impact of the development on these resources should be determined and proposals for the mitigation thereof are made.

Environmental management should also take the cultural and social needs of people into account. Any disturbance of landscapes and sites that constitute the nation's cultural heritage should be avoided as far as possible and where this is not possible the disturbance should be minimized and remedied.

3.3 THE INTERNATIONAL FINANCE CORPORATIONS' PERFORMANCE STANDARD FOR CULTURAL HERITAGE

This standard recognizes the importance of cultural heritage for current and future generations. It aims to ensure that clients protect cultural heritage in the course of their project activities.

This is done by clients abiding to the law and having heritage surveys done in order to identify and protect cultural heritage resources via field studies and the

documentation of such resources. These need to be done by competent professionals (e.g. archaeologists and cultural historians). Any possible chance find, encountered during the project development, also needs to be managed by not disturbing it and by having it assessed by professionals.

Impacts on the cultural heritage should be minimized. This includes the possible maintenance of such sites in situ, or when not possible, the restoration of the functionality of the cultural heritage in a different location. When cultural historical and archaeological artifacts and structures need to be removed, this should be done by professionals and by abiding to the applicable legislation.

The removal of cultural heritage resources may, however, only be considered if there are no technically or financially feasible alternatives. In considering the removal of cultural resources, it should be outweighed by the benefits of the overall project to the affected communities. Again professionals should carry out the work and adhere to the best available techniques. Consultation with affected communities should be conducted. This entails that such communities should be granted access to their cultural heritage if this is applicable. Compensation for the loss of cultural heritage should only be given in extra-ordinary circumstances.

Critical cultural heritage may not be impacted on. Professionals should be used to advise on the assessment and protection thereof. Utilization of cultural heritage resources should always be done in consultation with the affected communities in order to be consistent with their customs and traditions and to come to agreements with relation to possible equitable sharing of benefits from commercialization.

4. METHODOLOGY

4.1 Survey of literature

A survey of literature was undertaken in order to obtain background information regarding the area. Sources consulted in this regard are indicated in the bibliography.

4.2 Reference to other specialist studies

No relevant studies on the farm Generaalsdraai 423 JS or Generaalsdraai 429 JS, could be found on the SAHRIS database. Various studies was done on the nearby farm Wonderfontein, for the Wonderfontein Colliery. This included an HIA done by JCC Pistorius in 2008, a revised HIA done by A Pelser in 2013 and a Phase II architectural documentation done by S Miller. These indicated that many grave yards and a few historical farmsteads are to be found in the vicinity (SAHRIS database).

4.3 Public consultation and stakeholder engagement

Newspaper notices were placed on 10 February 2017 in the Middelburg Observer (Figure 5). On the same date site notices were placed on site (Figure 6-7). See section 8 of this report for the necessary information.

WORKSHOP/ WAREHOUSE TO LET
4A Lister Street, 180SQM
R7,500.00 per month &
300SQM R14,000.00 per
month (Excl. Vat & W&L).
Clinically Clean, Neat &
Secure. Must view to
appreciate.
Owner: 083 469 4374
VP025316

**0600
PROPERTY FOR
SALE**

**0605
BUSINESS**

SALON TE KOOP
Gevestigde Haarsalon te
koop in baie goeie
uitbreiding.
Kontak 071 334 6799
of faks
085 6234 577
SR068462

**0620
HOUSES**

**RENOVATOR
/DEVELOPER'S DREAM
!!!!**
4 Bedr house in Gholfsig
R1 550 000(Neg)
Erf. 2079m². Building
500m²
4 Bedr (Built in
Cupboards) 2 bathr, guest
toilet, study, 1 dining area,
family/TV-room, kitchen,
Scullery, laundry, 3
garages and carport.
Alarm. Built in Braai,
fenced, large garden **FLAT**
- 1 Bedr, large livingr,
equipped kitchen, full bathr
and storage area. Alarm,
double carport. Own
entrance.
Rental R4 500p.m.
Private Sale:
NO Commission
Ria 083 655 3570
SR068290

TE KOOP !!!!
• Te koop - Aeororand
Ruim 3 sijk meenthuis, d
/geniewe, d/m/huis.
Genieflke buite area met
braai.
Kontak 083 554 3665
SR068226

TE KOOP
• Groenkol Winskope -
Duet klinker, teëtdak 208m²
/groot 3 sijk, 2 badk,
stukk, groot sijk, eek, baie
groot moderne kombuis
met opwas, 2 mvh, stoep.
Nuut oorgedoen.
Slegs R1 400 000
• Groenkol: Woning -
3 Sijk, 2 badk, o'plan
sijk/eek kombi, groot
wask - spens.
2 mvh + d/afdak, braai
area.
Slegs R860 000
Skakel 082 399 4237
SR068617

**0700
MOTORING**

0715

**0735
MAINTENANCE**

**VR DIESEL & TURBO
YOUR BOSCH DIESEL
SERVICE IN
MIDDELBURG
CONTACT US FOR ALL
YOUR**

VEHICLE SERVICES
• Diagnostics
• Turbo Charger
• Diesel Pump and Injector
Needs.
013 246 1003 or
083 310 9235 or
vrdiesel@lantic.net
OS003106

**0750
WANTED**

KARAVAN BENODIG
Met of sonder papiere.
Ek het R10 000- R65 000
kontant + enige
kondusie.e-
Skakel David:
079 611 7708
VP025205

**0800
VACANCIES**

**0830
GENERAL**

**SANO IS LOOKING FOR
OUTAGE PERSONNEL
IN THE FOLLOWING
AREAS:**
Outage Manager
Requirements: E-Tech in
(electrical, mechanical,
chemical or project
management)
3 years outage
management related
experience
Outage coordinators
Requirements: N Diploma
in (electrical/mechanical,
chemical or project
management)
2 years outage
management related
experience
Outage planner : N
Diploma in (electrical,
mechanical, chemical or
project management)
1 year related experience
in either maintenance or
outages
People with power plant
experience need apply i.e
boiler, turbine centerline,
turbine auxiliaries and
auxiliary plants
Pis send your CV with
certified copies of
qualifications to:
hr@sano.org.za
Closing Date 16/2/17
LN039136

ADMIN POS
Posisie behels die
volgende:
• Algemene Administrasie
• Krediteure/ Debiture
• Produksie data
verwerking
• Tydstaats
• Aankope
• Ontvangs
Vereistes:
Graad 12
Min 3 jaar ondervinding in
algemene administrasie,
Microsoft Office Magtig.
Kennis van boerdery sal
voordelig wees.
Sluitingsdatum: 17 Feb
2017
info@molare.co.za
OS003284

TUTOR BENODIG

Dienste van Tutor benodig
vir 2 leerlinge (Graad 5 &
8)
• Hulp en leiding met :
hersiening, take opdragte,
huiswerk en voorbereiding
vir toetse en eksamen.
• Vorige ondervinding, en
/of onderwysagtergrond of-
studies sal as aanbeveling
dien.
• Ten vole tweetalig en
vlot in beide Afrikaans en
Engels.
• Verwysings sal nagegaan
word.
Kontak Liza 060 504 2563
OS003113

IS JY MOEG DAARVOOR
Om jouseif elke dag moeg
te werk vir geld ?
Nou's die tyd dat jou geld
vir jou kan werk.
Kontak my en ek wys jou
hoe
084 609 8887
SR088635

**A VACANCY OF
DISTRIBUTION
SUPERVISOR**

At Sitanani Carriers in
Witbank Industrial.
• Matriculated, preferably
with a National Diploma in
Transport Management.
• Knowledge and
experience gained from
employment in the Road
Freight Industry preferably
fuel is also required.
• The successful candidate
must be prepared to work
shifts and weekends.
• A market related
remuneration will be paid
to the successful
candidate.
CV to be forwarded to:
kedibone@
cargocarriers.co.za
086 681 3005
SR088607

**REGISTERED MALE
SECURITY GUARDS**

Needed at Executive Risk
Control.
Bring you CV to the office
@
Corner of Verdoorn and
Ceyllon Street,
Middelburg
SR068411

**SALON BENODIG
GEKWALIFISEERDE
HAARKAPSTERS**

Hairicious and Nailbar
Salon by Fountain Square
benodig 2 Gekwalifiseerde
Haarkapsters asook
Naeitgnikus met kliënte
basis
Corné 072 825 5977 of
071 334 6799
of faks: 0866 234 577
SR068226

NOTICE • K



**NOTICE OF A BID
MEETING TO BE**

Notice is hereby given
Tshwete Local Municipi-
Policy, that a meet-
Municipality's Bid Ad-
in the Municipal Board
Wanderers Avenue ar
on 17 February 2017

Please take note that
public and a limited n

**S.M. MNGUNI
ACTING MUNICIPAL**

**NOTICE OF ATMOSPHERIC
APPLICATION**

In terms of the National Environmental Ma-
Act 39 of 2004, (NEM:QA) notice is hereby
renewal of an Atmospheric Emission License
Jubilee Smelting and Refining (Pty) Ltd/ho
Metals Plant situated at 6 Dr Nelson Mand
RST Special Metals has been transferred to
Section 44, application for permission from
Municipality, the area licensing authority.
A renewal process of the AEL (Number 123
of NEM:QA. The following Listed Activities
(November 2013) are applicable to the acti-
licensed as part of the AEL:
Category 4: Metallurgical Industry
- Subcategory 4.1 Drying and
- Subcategory 4.6 Basic Dryer
- Subcategory 4.9 Ferro-alloy;
- Subcategory 4.10 Foundries
- Subcategory 4.17 Precious an
- Subcategory 4.21 Metal recov
In addition to the existing licensed activities
included in the application:
The AEL Application Form submitted to the
comment from Riaan Freemantle Freeman
co.za or by telephone 013 243 4843. The o

**NOTICE OF THE COMMENCEMENT OF A BASIC
ENVIRONMENTAL ASSESSMENT PROCESS**

Notice is herewith given in terms of Section 24(2) and 24D of the National
Environmental Management Act, 1998 (Act No. 107 of 1998), as amended, and the
Environmental Impact Assessment Regulations, 2014, of the intent to carry out a
basic environmental assessment process for the following activity:

Description of the activity:
Morelig Combined School located near Wonderfontein needs to be relocated due
to mining activities of Umsimbithi Mining (Pty) Ltd. The mining company plans to
construct a new school and associated infrastructure (including water pipelines)
west of the Afgri Silos in Wonderfontein. The school will cater for 1000 students from
Grade R to Grade 12. The proposed project would involve Listed Activities 12, 19 and
28 of Listing Notice 1 of 2014 (Government Notice R983 of 4 December 2014) and
Listed Activity 14 of Listing Notice 3 (Government Notice R985 of 4 December 2014)
as identified in terms of Section 24(2), 24(5), 24D and 44, read with Section 47A(1)(b)
of the National Environmental Management Act, 1998.

Location of the activity:
The proposed school property is located west of the Afgri Silos in Wonderfontein
(located between Middelburg and Belfast) and will be located on the Remainder of
Generaalsdraai 429 JS. Associated water pipelines will also be located on Portion 16
of Generaalsdraai 423 JS.

Extent (area) of the development:
The proposed school property will be 4.8777 ha in extent. The associated water
pipelines will be approximately 4 km in length.

Name of proponent: Umsimbithi Mining (Pty) Ltd.

Date of advertisement: 10 February 2017

In order to ensure that you are identified as an interested and/or affected party or to
obtain a copy of the Background Information Document; please submit your name,
contact information and interest in the matter to the contact person on/before 10
March 2017.

Reference number assigned by AdEnvironmental cc: BA2017/01.

Name of consultant:
AdEnvironmental cc,
P.O. Box 647, Witbank, 1035
Tel/fax: 013-697 5021
E-mail: riana@adienvironmental.co.za
Contact person: Riana van Rensburg

Please note: No Jobs Available

CTC
COLLIERY TRAINING COLLEGE
Leading Expertise. Delivered.

TENDER
PROVISION OF GENERAL WASTE REMOVAL

Tenders are hereby invited to suitably qualified service providers
to submit proposals for the provision of general waste removal
at Colliery Training College.

APPLICATION FOR AN ENVIR

Notice is given for the following application:
1) Environmental authorization applicati-
• **Proponent:** The applicant is Julogyst
• **Ref. no:** NP30/5/1/12/14477PR
Property description: The proposed prospecti-
tion 2 of Orange Vlei (2015), Mookvey 219-5
Waldbank 232 IS; Portions 2,3,4,6,8,9,10,12
Waldbank 236 IS; Remaining extent, Portions
265 IS, and Portions 2,3,4,6,8,9,10 & 13 of th
the prospecting area is 22098,0210 hectares
T01505000000019200000; T0150500000000
T01505000000000000000; T01505000000000000000

Figure 5: Newspaper notice.

NOTICE OF THE COMMENCEMENT OF A BASIC ENVIRONMENTAL ASSESSMENT PROCESS

Notice is herewith given in terms of Section 24(2) and 24D of the National Environmental Management Act, 1998 (Act No. 107 of 1998), as amended, and the Environmental Impact Assessment Regulations, 2014, of the intent to carry out a **basic environmental assessment process** for the following activity:

Description of the activity:

Morelig Combined School located near Wonderfontein needs to be relocated due to mining activities of Umsimibithi Mining (Pty) Ltd. The mining company plans to construct a new school and associated infrastructure (including water pipelines) west of the Afgri Silos in Wonderfontein. The school will cater for 1000 students from Grade R to Grade 12. The proposed project would involve Listed Activities 12, 19 and 28 of Listing Notice 1 of 2014 (Government Notice R983 of 4 December 2014) and Listed Activity 14 of Listing Notice 3 (Government Notice R985 of 4 December 2014) as identified in terms of Section 24(2), 24(5), 24D and 44, read with Section 47A(1)(b) of the National Environmental Management Act, 1998.

Location of the activity:

The proposed school property is located west of the Afgri Silos in Wonderfontein (located between Middelburg and Belfast) and will be located on the Remainder of Generaalsdraai 429 JS. Associated water pipelines will also be located on Portion 16 of Generaalsdraai 423 JS.

Extent (area) of the development:

The proposed school property will be 4.8777 ha in extent. The associated water pipelines will be approximately 4 km in length.

Name of proponent:

Umsimibithi Mining (Pty) Ltd.

Date of advertisement:

10 February 2017

*In order to ensure that you are identified as an interested and/or affected party or to obtain a copy of the Background Information Document; please submit your name, contact information and interest in the matter to the contact person on/before **10 March 2017**.*

Reference number assigned by AdiEnvironmental cc: BA2017/01.



Name of consultant:

AdiEnvironmental cc.
P.O. Box 647, Witbank, 1035
Tel/fax: 013-697 5021
E-mail: riana@adienvironmental.co.za
Contact person: Riana van Rensburg

Please note: No Jobs Available

Figure 6: Site notice.



Figure 7: One of the site notices on site.

4.4 Oral histories

People from local communities are interviewed in order to obtain information relating to the surveyed area. It needs to be stated that this is not applicable under all circumstances. When applicable, the information is included in the text and referred to in the bibliography. In this case it was not done additionally since it would be covered by the Public consultation report.

4.5 Physical field survey

The survey was conducted according to generally accepted HIA practices and was aimed at locating all possible objects, sites and features of cultural significance in the area of proposed development. One regularly looks a bit wider than the demarcated area, as the surrounding context needs to be taken into consideration.

If required, the location/position of any site was determined by means of a Global Positioning System (GPS)², while photographs were also taken where needed. The survey was undertaken by doing a physical survey via off-road vehicle and on foot and covered as much as possible of the area to be studied (Figure 8). As only one

² A Garmin Oregon 550 with an accuracy factor of a few meters.

GPS unit was used, but two people did the survey, the track log only reflects the movement of one person. The second person covered areas not indicated on the map.

Certain factors, such as accessibility, density of vegetation, etc. may however influence the coverage. In this instance the under footing was extremely dense and the vegetation cover medium to high. Accordingly both the horizontal and the vertical archaeological visibility was influenced negatively. The size of the surveyed area is 4.8777 Ha and the length of proposed pipelines approximately 4 km. The survey took 5 hours to complete.

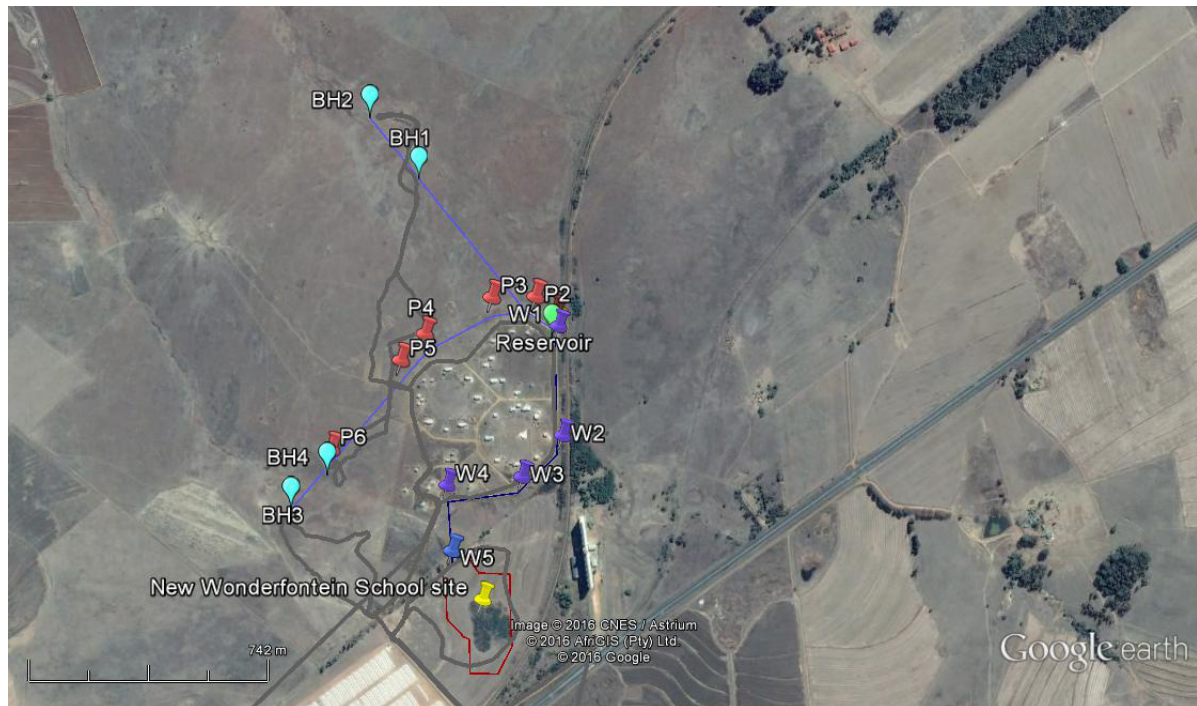


FIGURE 8: GPS TRACK OF THE SURVEYED AREA.³ NORTH REFERENCE IS TO THE TOP.

P1-P5 – CO-ORDINATES FOR PUMPING MAINS

W1-W5 – CO-ORDINATES FOR WATERLINE

BH1-BH4 - BOREHOLES

————— - 90 WATERLINE

————— - 75 WATERLINE

————— - TRACK LOG

4.6 Documentation

All sites, objects features and structures identified were documented according to the general minimum standards accepted by the archaeological profession. Co-ordinates of individual localities were determined by means of the Global Positioning System

³ Two people, in radio contact, did the survey, but only one GPS unit was available.

(GPS). The information was added to the description in order to facilitate the identification of each locality.

4.7 Evaluation of Heritage sites

The evaluation of heritage sites is done by giving a field rating of each (see Appendix C) using the following criteria:

- The unique nature of a site
- The integrity of the archaeological deposit
- The wider historic, archaeological and geographic context of the site
- The location of the site in relation to other similar sites or features
- The depth of the archaeological deposit (when it can be determined or is known)
- The preservation condition of the site
- Uniqueness of the site and
- Potential to answer present research questions.

5. ASSUMPTIONS, GAPS, RESTRICTIONS, CONDITIONS AND LIMITATIONS

The following conditions and assumptions have a direct bearing on the survey and the resulting report:

1. Cultural Resources are all non-physical and physical man-made occurrences, as well as natural occurrences associated with human activity (Appendix A). These include all sites, structures and artifacts of importance, either individually or in groups, in the history, architecture and archaeology of human (cultural) development. Graves and cemeteries are included in this.
2. The significance of the sites, structures and artifacts is determined by means of their historical, social, aesthetic, technological and scientific value in relation to their uniqueness, condition of preservation and research potential. The various aspects are not mutually exclusive, and the evaluation of any site is done with reference to any number of these aspects.
3. Cultural significance is site-specific and relates to the content and context of the site. Sites regarded as having low cultural significance have already been recorded in full and require no further mitigation. Sites with medium cultural significance may or may not require mitigation depending on other factors such as the significance of impact on the site. Sites with a high cultural significance require further mitigation (see Appendix C).
4. The latitude and longitude of any archaeological or historical site or feature, is to be treated as sensitive information by the developer and should not be disclosed to members of the public.
5. All recommendations are made with full cognizance of the relevant legislation.

6. It has to be mentioned that it is almost impossible to locate all the cultural resources in a given area, as it will be very time consuming. Developers should however note that the report should make it clear how to handle any other finds that might occur.
7. In this particular case large parts of the surveyed area have been disturbed by mining and other activities. Accordingly these areas are seen as a low risk areas to reveal heritage sites due to it being almost entirely disturbed.
8. The vegetation cover in certain areas was extremely high (more than head high) and dense, which had a negative effect on both the vertical and the horizontal archaeological visibility.

6. DESCRIPTION OF THE SOCIO-ECONOMIC ENVIRONMENT

Morelig Combined School located near Wonderfontein needs to be relocated due to mining activities of Umsimibithi Mining (Pty) Ltd. The said site will be subdivided from the overall farm and rezoned for institutional purposes. The school will be able to cater for 1000 students (from Grade R to Grade 12). It will consist of 29 classrooms, 3 ablution blocks, library, laboratory, kitchen, computer centre, administration block, hall, guardhouse, 3 accommodation blocks, sports field, 3 combi courts, parking and drop off zone for busses, 30 covered and 30 open parking bays.

Since the site is located outside an urban area, services (i.e. water, sewer, storm water management, access road, etc.) need to be provided as part of the project. According to the project engineers, groundwater will be utilized. New boreholes will be drilled and the water will be piped to an existing high level reservoir from where it will be distributed to the school.

7. DESCRIPTION OF THE PHYSICAL ENVIRONMENT

The area that was surveyed is located on the Mpumalanga Highveld and shows typical Highveld characteristics, including grassland with isolated trees. These species are foreign and therefore an indication of disturbance. The vegetation cover varies from areas with medium high but dense grass to areas with dense, very high vegetation (Figure 9-10). The latter of course has a negative effect on both the horizontal as the vertical archaeological visibility.

The surveyed site has been disturbed to a large extent by recent human activities. Apart from the foreign trees (Figure 11), the area also consist of old agricultural fields (Figure 12) and certain sections shows signs of being worked by large excavation equipment. The pipeline routes and positions of boreholes (Figure 13) mainly runs through areas which have been used for grazing and therefore is less disturbed.

A few houses are found adjacent to the surveyed area for the school. This is called the Generaalsdraai Village. Here some roads, a water tower (Figure 14) and other disturbances were noted.

The topography of the surveyed area is fairly flat. It does fall towards the west where some tributaries of larger rivers are present.



FIGURE 9: GENERAL VIEW OF VEGETATION IN THE SURVEYED AREA WITHIN THE SCHOOL SITE.



FIGURE 10: GENERAL VIEW ALONG THE PIPELINE ROUTE CLOSE TO P5 IN THE SURVEYED AREA.



FIGURE 11: VEGETATION COVER IN AN AREA THAT USED TO BE AN AGRICULTURAL FIELD WITHIN THE SCHOOL SITE.



FIGURE 12: REMAINS OF FOREIGN TREE SPECIES IN THE SURVEYED AREA WITHIN THE SCHOOL SITE.



FIGURE 13: VIEW OF VEGETATION CLOSE TO THE SITE OF BOREHOLE 2.



FIGURE 14: VIEW ALONG ONE OF THE WATERLINE ROUTE BETWEEN W1 AND W2.

8. RESULTS OF PUBLIC CONSULTATION AND STAKEHOLDER ENGAGEMENT

AdiEnvironmental did a thorough report. However, nothing related to heritage was identified.

9. HISTORICAL CONTEXT

No sites of cultural heritage significance were located during the survey, neither on the pipeline routes nor in the school site. Some Iron Age stone circles were noted on Google Earth towards the north and west of the pipeline routes. Background information is given in order to place the surveyed area in a historical context and to contextualize possible finds that could be unearthed during construction activities.

9.1 Stone Age

The Stone Age is the period in human history when lithic material was mainly used to produce tools (Coertze & Coertze 1996: 293). In South Africa the Stone Age can be divided in three periods. It is, however, important to note that dates are relative and only provide a broad framework for interpretation.

The division for the Stone Age according to Korsman & Meyer (1999: 93-94) is as follows:

- Early Stone Age (ESA) 2 million – 150 000 years ago;
- Middle Stone Age (MSA) 150 000 – 30 000 years ago; and
- Late Stone Age (LSA) 40 000 years ago – 1850 - A.D.

The environment around Wonderfontein and Belfast is not one known for containing Stone Age sites. This may be a result of not much research having been done here. However, no Stone Age sites are indicated on a map contained in a historical atlas of this area (Bergh 1999: 4). The closest known Stone Age occurrences are Late Stone Age sites at Carolina and Badplaas, and rock painting sites close to Machadodorp, Badplaas and Carolina (Bergh 1999: 4-5).

The environment of the surveyed area is such that it does provide natural shelter, however likely at some distance away. It therefore is possible that Stone Age people did not settle inside of the surveyed area, but perhaps in nearby caves or rock shelters. They would definitely have been lured to the area due to an abundance of wild life as the occurrence of water and natural vegetation would have provided ample grazing. One may therefore find open air sites or occasional stone tools in the surveyed area.

9.2 Iron Age

The Iron Age is the name given to the period of human history when metal was mainly used to produce metal artifacts (Coertze & Coertze 1996: 346). In South Africa it can be divided in two separate phases according to Van der Ryst & Meyer (1999: 96-98), namely:

- Early Iron Age (EIA) 200 – 1000 A.D.; and
- Late Iron Age (LIA) 1000 – 1850 A.D.

Huffman (2007: xiii) however, indicates that a Middle Iron Age should be included. His dates, which now seem to be widely accepted in archaeological circles, are:

- Early Iron Age (EIA) 250 – 900 A.D.;
- Middle Iron Age (MIA) 900 – 1300 A.D.; and
- Late Iron Age (LIA) 1300 – 1840 A.D.

In an area around Wonderfontein and Belfast, including Lydenburg, Nelspruit, Machadodorp and Badplaas a number of 1 792 Iron Age sites have been identified (Bergh 1999: 7). These all are dated to the Late Iron Age. Sites such as these are known for extensive stone building forming settlement complexes. No indication of metal smelting was identified at any of these sites (Bergh 1999: 8).

It is also known that the early trade routes did not run through this area (Bergh 1999: 9). However one should bear in mind that many of these areas may not have been surveyed before and therefore the possibility of finding new sites is always a reality. For instance, one Late Iron Age/ Historical site was found during a previous survey in the vicinity (Archaeos database). As indicated earlier, some Late Iron Age stone walling were noted on Google Earth images. The lies towards the north and west of the pipeline route.

The type of environment is suitable for human habitation as ample building material, water, grazing and fuel are available. One would therefore expect that Iron Age people may have utilized the area. This is the same reason why white settlers later on moved into this environment.

9.3 Historical Age

The historical age started with the first recorded oral histories in the area. It includes the moving into the area of people that were able to read and write. This era is sometimes called the Colonial era or the recent past.

Due to factors such as population growth and a decrease in mortality rates, more people inhabited the country during the recent historical past. Therefore and because less time has passed, much more cultural heritage resources from this era have been left on the landscape. It is important to note that all cultural resources older than 60 years are potentially regarded as part of the heritage and that detailed studies are needed in order to determine whether these indeed have cultural significance. Factors to be considered include aesthetic, scientific, cultural and religious value of such resources.

At the beginning of the 19th century the Phuthing, a South Sotho group, stayed to the south of Wonderfontein. The Koni of Makopole stayed to the north-east and the Ndzundza Ndebele to the west. During the Difaquane they fled to the south, south-west and north-west as Mzilikazi's impi moved in from the southeast. During this time the Swazi also moved into this area (Bergh 1999: 10-11; 109).

The first white traveler to visit these surroundings was Robert Scoon in 1836 (Bergh 1999: 13). The area around Wonderfontein and Belfast, stretching as far as the Kruger Park, Middelburg and Ohrigstad, was first traded from the Swazi in 1846. White farmers therefore only settled here after this date (Bergh 1999: 16, 133).

Wonderfontein remained merely a farm with a small industrial component. The nearby town of Belfast was established in 1890 and by the 1890's this area was inhabited by many white farmers (Bergh 1999: 21). Just to the south of the town, on the farm Wemmershuis, the remains of an old coach house were identified. This is on the old trade route between Middelburg and the far eastern Transvaal (Van Vollenhoven 2008: 14). A map from Bulpin (1974) shows that the eastern railway line went through Belfast and one can assume that this was an important stop for travelers. The reason is that the road forks here to the north in the direction of Ohrigstad and Lydenburg and to the east in the direction of Nelspruit.

During the Anglo-Boer War the area around Belfast saw much action. The last of the conventional military encounters between the British and Boer forces were that of the Battle of Bergendal, sometimes called the Battle of Dalmanutha. The battle took place between 21 and 27 August 1900.

On 21-22 August skirmishes started on the farm Van Wyksvlei, to the south of Belfast. This was followed by an attack on 23 August by the British on the Boer

forces on the farm Geluk. Later that day the Boers at Dalmanutha were also under attack. The final phase of the battle was at Bergendal on 27 August 1900 (Van der Westhuizen & Van der Westhuizen 2000: 218-220). The Boers retreated from the scene and the British could continue their advance to the Lowveld.

On 24 August 1900 the British occupied Belfast. In the town they had three concentration camps for Boer women and children (Van der Westhuizen & Van der Westhuizen 2000: 211-214). After the British reached Komatipoort on 24 September 1900, they erected blockhouses and other fortifications along the railway line in order to safeguard this from the Boers (Van Vollenhoven 1995: 86). The remains of two of these are found to the south of the railway line at Belfast (Van Vollenhoven 2008: 15). During the night of 7-8 January 1901 the Boers attacked Belfast and started against the blockhouses on Monument hill (Van der Westhuizen & Van der Westhuizen 2000: 217).

One may therefore expect to find farm buildings, structures and objects in the area. Many graveyards from this period in time have been identified in surrounding areas during past surveys. Historical graves have also been found at Wemmershuis, just to the south of Belfast previously (Archaetnos database). One should therefore be on the lookout for graves in the surveyed areas.

10. CONCLUSION AND RECOMMENDATIONS

The survey of the indicated area was completed successfully. As indicated no sites of cultural heritage significance were identified within the proposed project area, that is the school site, nor were any found on the pipeline routes or at the borehole sites. Late Iron Age circles were identified on Google Earth towards the north and east of the waterline route, but these are more than 100 m away and should therefore not be affected by the development.

The following is recommended:

- This report is seen as ample mitigation and the proposed development may thus continue, but only after the report had been approved by SAHRA.
- The developer should ensure that they steer clear of the Iron Age features that were noted towards the north and east of the project area.
- It should be noted that the subterranean presence of archaeological and/or historical sites, features or artifacts is always a distinct possibility. Due to the density of vegetation it also is possible that some sites may only become known later on. Operating controls and monitoring should therefore be aimed at the possible unearthing of such features. Care should therefore be taken when development commences that if any of these are discovered, a qualified archaeologist be called in to investigate the occurrence.

11. REFERENCES

- Archaetnos database.
- Bergh, J.S. (red.). 1999. **Geskiedenisatlas van Suid-Afrika. Die vier noordelike provinsies.** Pretoria: J.L. van Schaik.
- Bulpin, T.V. 1974 (3rd edition). **Lost trials of the Transvaal.** (Cape & Transvaal Printers Ltd, Cape Town).
- Coertze, P.J. & Coertze, R.D. 1996. **Verklarende vakwoordeboek vir Antropologie en Argeologie.** Pretoria: R.D. Coertze.
- Huffman, T.N. 2007. **Handbook to the Iron Age: The Archaeology of Pre-Colonial Farming Societies in Southern Africa.** Scottsville: University of KwaZulu-Natal Press.
- International Finance Corporation. 2012. **Overview of performance standards on Environmental and Social Sustainability. Performance Standard 8, Cultural Heritage.** World Bank Group.
- Knudson, S.J. 1978. **Culture in retrospect.** Chicago: Rand McNally College Publishing Company.
- Korsman, S.A. & Meyer, A. 1999. Die Steentydperk en rotskuns. Bergh, J.S. (red.). **Geskiedenisatlas van Suid-Afrika. Die vier noordelike provinsies.** Pretoria: J.L. van Schaik.
- Republic of South Africa. 1980. Ordinance on Excavations (**Ordinance no. 12 of 1980**). **The Government Printer: Pretoria.**
- Republic of South Africa. 1983. **Human Tissue Act** (Act 65 of 1983). The Government Printer: Pretoria.
- Republic of South Africa. 1999. **National Heritage Resources Act** (No 25 of 1999). Pretoria: the Government Printer.
- Republic of South Africa. 1998. **National Environmental Management Act** (no 107 of 1998). Pretoria: The Government Printer.
- SAHRA's SAHRIS database.
- Van der Ryst, M.M. & Meyer, A. 1999. Die Ystertydperk. Bergh, J.S. (red.). **Geskiedenisatlas van Suid-Afrika. Die vier noordelike provinsies. Pretoria: J.L. van Schaik.**
- Van der Westhuizen, G. & Van der Westhuizen, E. 2000. **Gids tot die Anglo-Boereoorlog in die Oos-Transvaal.** (TRANSRO Pers, Roodepoort).
- Van Vollenhoven, A.C. 1995. **Die militêre fortifikasies van Pretoria 1880-1902. 'n Studie in die historiese argeologie.** (Heinekor, Pretoria).
- Van Vollenhoven, A.C. 2008. **Report on an archival investigation on the farm Wemmershuis 370 JT, Belfast.** (Unpublished report, Archaetnos, Wonderboompoort).

APPENDIX A

DEFINITION OF TERMS:

Site: A large place with extensive structures and related cultural objects. It can also be a large assemblage of cultural artifacts, found on a single location.

Structure: A permanent building found in isolation or which forms a site in conjunction with other structures.

Feature: A coincidental find of movable cultural objects.

Object: Artifact (cultural object).

(Also see Knudson 1978: 20).

APPENDIX B

DEFINITION/ STATEMENT OF HERITAGE SIGNIFICANCE:

- Historic value: Important in the community or pattern of history or has an association with the life or work of a person, group or organization of importance in history.
- Aesthetic value: Important in exhibiting particular aesthetic characteristics valued by a community or cultural group.
- Scientific value: Potential to yield information that will contribute to an understanding of natural or cultural history or is important in demonstrating a high degree of creative or technical achievement of a particular period
- Social value: Have a strong or special association with a particular community or cultural group for social, cultural or spiritual reasons.
- Rarity: Does it possess uncommon, rare or endangered aspects of natural or cultural heritage.
- Representivity: Important in demonstrating the principal characteristics of a particular class of natural or cultural places or object or a range of landscapes or environments characteristic of its class or of human activities (including way of life, philosophy, custom, process, land-use, function, design or technique) in the environment of the nation, province region or locality.

APPENDIX C

SIGNIFICANCE AND FIELD RATING:

Cultural significance:

- Negligible – The site has no heritage significance, although it may be older than 60 years.
- Low - A cultural object being found out of context, not being part of a site or without any related feature/structure in its surroundings. A site with minimal importance which is decreased by its bad state of decay.
- Low-Medium - A site of lesser importance, which is increased by a good state of preservation and contextual importance (e.g. a specific community).
- Medium - Any site, structure or feature being regarded less important due to a number of factors, such as date and frequency. Also any important object found out of context.
- Medium-High - A site that has high importance due to its age or uniqueness, but which decreases due to its bad state of decay.
- High - Any site, structure or feature regarded as important because of its age or uniqueness. Also any important object found within a specific context.
- Very High - A site of exceptional importance due to its age, uniqueness and good state of preservation.

Heritage significance:

- Grade I Heritage resources with exceptional qualities to the extent that they are of national significance
- Grade II Heritage resources with qualities giving it provincial or regional importance although it may form part of the national estate
- Grade III Other heritage resources of local importance and therefore worthy of conservation

Field ratings:

National Grade I significance: The site should be managed as part of the national estate, should be nominated as Grad I site, should be maintained in situ with a protected buffer zone and a CMP must be recommended. Score above 50.

Provincial Grade II significance: The site should be managed as part of the provincial estate, should be nominated as Grade II site, should be maintained in situ with a protected buffer zone and a CMP must be recommended. Score between 40 and 50.

Local Grade IIIA: The site should be included in the heritage register and not be mitigated (high significance), should be maintained in situ with a protected buffer zone and a CMP must be recommended. Score between 36 and 40.

Local Grade IIIB: The site should be included in the heritage register and may be mitigated (high/ medium significance). Mitigation is subject to a permit application lodged with the relevant heritage authority. Score between 6 and 35.

Local Grade IIIC: The description in the phase 1 heritage report is seen as sufficient recording (low significance) and it may be granted destruction at the discretion of the relevant heritage authority without a formal permit application, subjected to the granting of Environmental Authorisation. Score below 5.

APPENDIX D

PROTECTION OF HERITAGE RESOURCES:

Formal protection:

National heritage sites and Provincial heritage sites – grade I and II

Protected areas - an area surrounding a heritage site

Provisional protection – for a maximum period of two years

Heritage registers – listing grades II and III

Heritage areas – areas with more than one heritage site included

Heritage objects – e.g. archaeological, palaeontological, meteorites, geological specimens, visual art, military, numismatic, books, etc.

General protection:

Objects protected by the laws of foreign states

Structures – older than 60 years

Archaeology, palaeontology and meteorites

Burial grounds and graves

Public monuments and memorials

APPENDIX E

HERITAGE IMPACT ASSESSMENT PHASES

1. Pre-assessment or scoping phase – establishment of the scope of the project and terms of reference.
2. Baseline assessment – establishment of a broad framework of the potential heritage of an area.
3. Phase I impact assessment – identifying sites, assess their significance, make comments on the impact of the development and makes recommendations for mitigation or conservation.
4. Letter of recommendation for exemption – if there is no likelihood that any sites will be impacted.
5. Phase II mitigation or rescue – planning for the protection of significant sites or sampling through excavation or collection (after receiving a permit) of sites that may be lost.
6. Phase III management plan – for rare cases where sites are so important that development cannot be allowed.