



Amafa aKwaZulu-Natali
195 Jabu Ndlovu Street Pietermaritzburg 3200 August
Telephone 033 3946 543
bernadetp@amafapmb.co.za

25 October 2017

Attention **Bernadet Pawandiwa**

Dear Ms Pawandiwa

Heritage Scoping Report
Proposed Upgrade and Extension of Craigside Township
Endumeni LM, Mzinyathi DM, KwaZulu-Natal

Project Area and Project description

Craigside is a semi-formalised township comprising roughly 210 households within the Endumeni Local Municipality (Dundee). The proposed township extension is planned to deliver low cost housing units, roads and services to the standards of the National Department of Human Settlements. Prefeasibility investigations indicate that the project is viable for an upgrade with a potential yield of 420 housing units; a school, a crèche, a church and a limited commercial area (Figure 1).¹

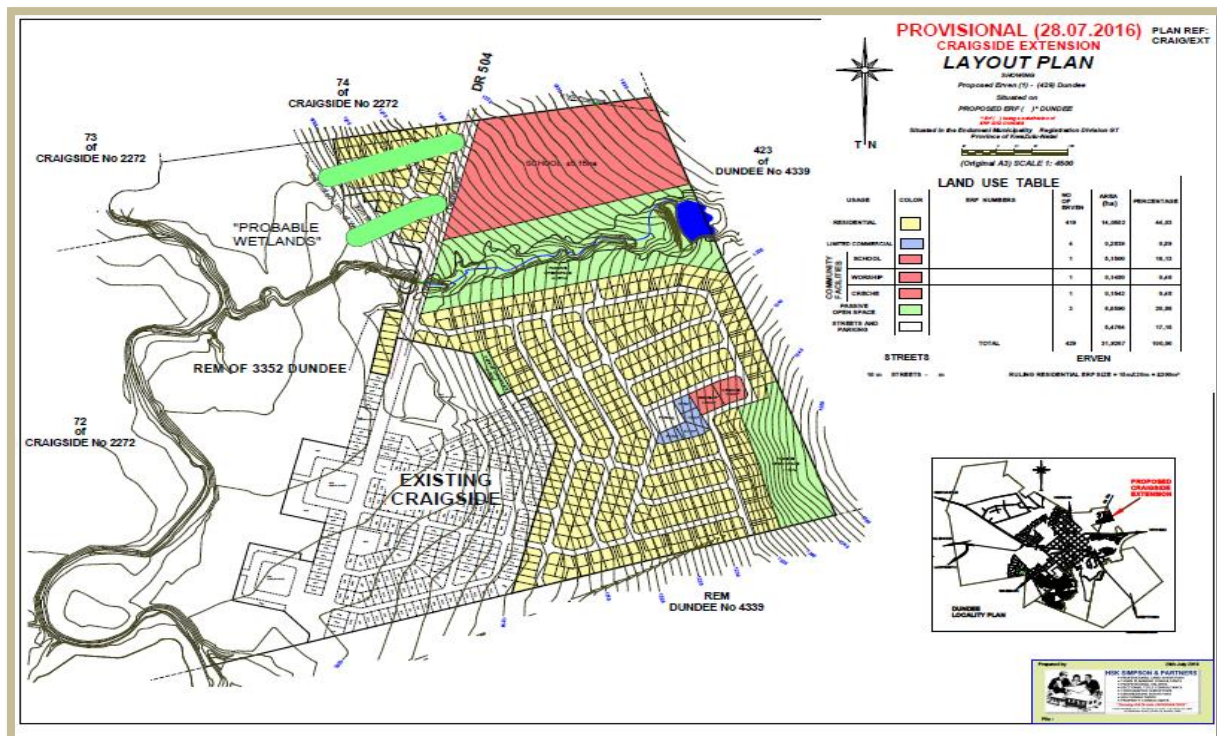


Figure 1 Existing Craigside Township and Proposed Extensions

¹ As per Information provided by Enprocon Environmental Consultants.

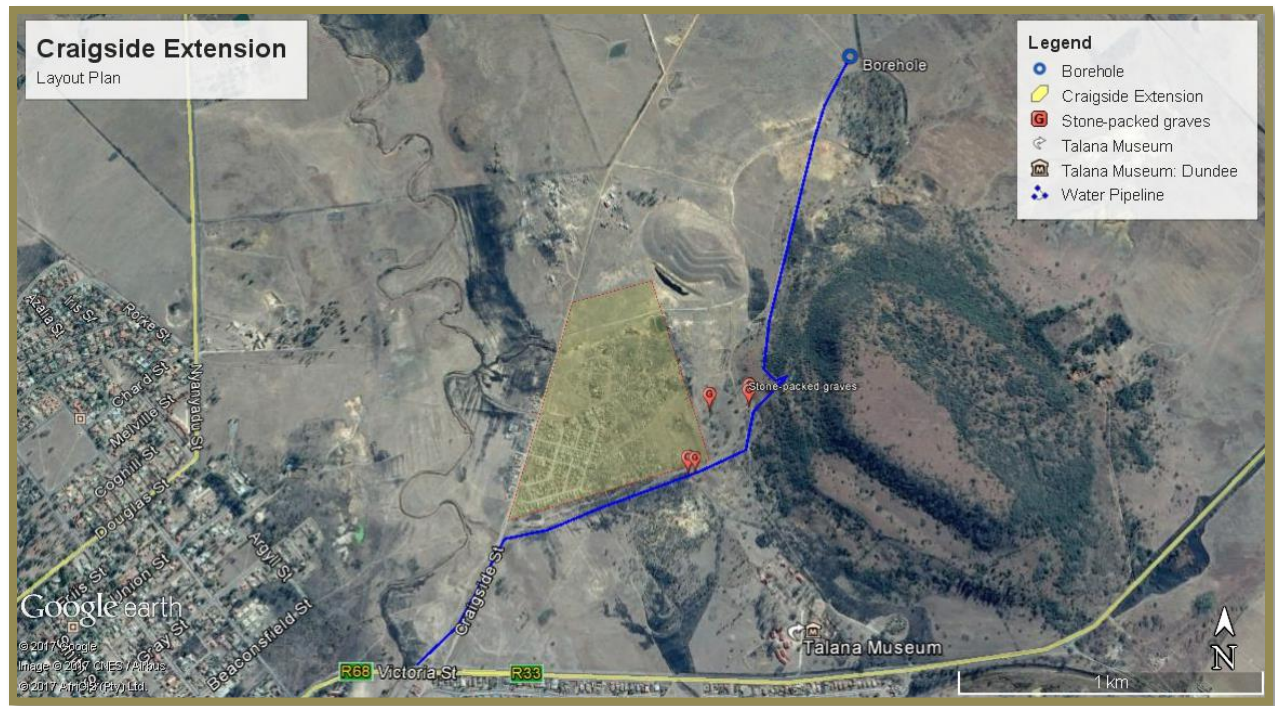


Figure 2 Craigside location map

The project is of significance to the municipality in its potential to provide sorely required housing, more integrated suburban planning, and a more efficient and sustainable programme of human settlement within the precinct of the town.

Enprocon Consulting were appointed by the Endumeni Municipality to conduct a Basic Assessment of the site in compliance with NEMA requirements and the municipal environmental by-laws.

Observations

Craigside and the proposed township extension is located on Rem 3352 of Dundee and lies adjacent to the Talana Museum, Battlefield and Heritage Park, a Grade II Provincial Landmark.

eThembeni staff (LvS)² conducted a site visit on 29 August 2017 (see photographs loaded to SAHRIS). Of principal concern was the possible encroachment or impact on heritage resources previously surveyed by eThembeni during a water pipeline HIA conducted in 2012, and the subsequent monitoring thereof during the course of 2014.³ Both the current Craigside settlement, and the planned layout of the proposed extensions, are confined to the cadastral boundaries of Rem 3352; with no incursion into Rem 4339 of Dundee, the land portion defining the cadastral boundaries of the Provincial Landmark.

Graves identified and reported on in the earlier HIA all occur within the boundaries of the Talana Museum Heritage Park (see Table 1). However, due to inadequate boundary fencing between Craigside and the Heritage Park it is strongly recommended that these traditional burial places are adequately fenced at the inception of construction activities for the proposed township extension.⁴ All human remains have high heritage significance at all levels for their spiritual, social and cultural values.

² Len van Schalkwyk

³ Phase 1 Heritage Impact Assessment Report: Dundee Bulk Water Supply Project, Endumeni LM, Umzinyathi DM, KwaZulu-Natal. Prepared for iBhongo Consulting cc. 10 October 2012.

⁴ Fencing should comprise 4 x H-bar fencing standards spanned with barbed wire at 300mm intervals.

Table 1 Traditional burial place locations.

Site number	Number of graves	S	E
15	1	28 08 53.3	30 15 35.3
16	1	28 08 56.7	30 15 29.5
17	Minimum 7	28 08 57.3	30 15 29.4
18	Minimum 5	28 08 57.6	30 15 24.3
19	Minimum 2	28 09 04.7	30 15 22.3
20	1	28 09 04.9	30 15 21.4

The historically recent intensive human settlement has masked over any primary context archaeological material that may have been present on the Craigsid locality. No residues were observed during the walk over of the site perimeters.

The underlying base lithology is fine to coarse-grained sandstone, shale and coal seams of the Vryheid Formation. This formation is considered highly sensitive in terms of its palaeontology (Groenewald 2012)⁵. However, a rehabilitated coal stope immediately north of Craigsid indicates that fossil sensitive coal seams occur minimally some 10 to 15 metres below the current land surface, and would consequently not be impacted by the proposed housing and services extension programme.

Recommendations

Accordingly, we request that Amafa allow the proposed housing project upgrades to proceed with no further heritage resource mitigation.

In this regard, please can you notify us timeously via the loaded SAHRIS case file as to the decision of the heritage agencies.

Yours sincerely



Len van Schalkwyk
Principle Investigator.

⁵ Groenewald, G. 2012. Unpublished Palaeontological Technical Report for KwaZulu-Natal. Amafa. Pietermaritzburg.