

**A LETTER OF EXEMPTION FOR A "PIT" IN INANDA
ROAD, DURBAN, KZN**

FOR NAIDU CONSULTING

DATE: 13 SEPTEMBER 2020

By Gavin Anderson

**Umlando: Archaeological Surveys and Heritage
Management**

PO Box 10153, Meerensee, 3901

Phone/fax: 035-7531785 Fax: 0865445631

Cell: 0836585362



Abbreviations

HP	Historical Period
IIA	Indeterminate Iron Age
LIA	Late Iron Age
EIA	Early Iron Age
ISA	Indeterminate Stone Age
ESA	Early Stone Age
MSA	Middle Stone Age
LSA	Late Stone Age
HIA	Heritage Impact Assessment
PIA	Palaeontological Impact Assessment

Naidu Consulting is currently upgrading the M25, Inanda Road. A pit with several bones was exposed on the road margin during construction was noted and reported. KZNARI issued a 'work stop order' until the pit with bones was assessed by a qualified archaeologist.

Umlando was requested to assist in the assessment. This assessment was undertaken on the 7 September 2020 with Naidu Consulting staff. The pit was considered to be recent in age due to plastic being associated with the bones.

Figures 1 – 3 shows the location of pit.

FIG. 1 GENERAL LOCATION OF THE STUDY AREA

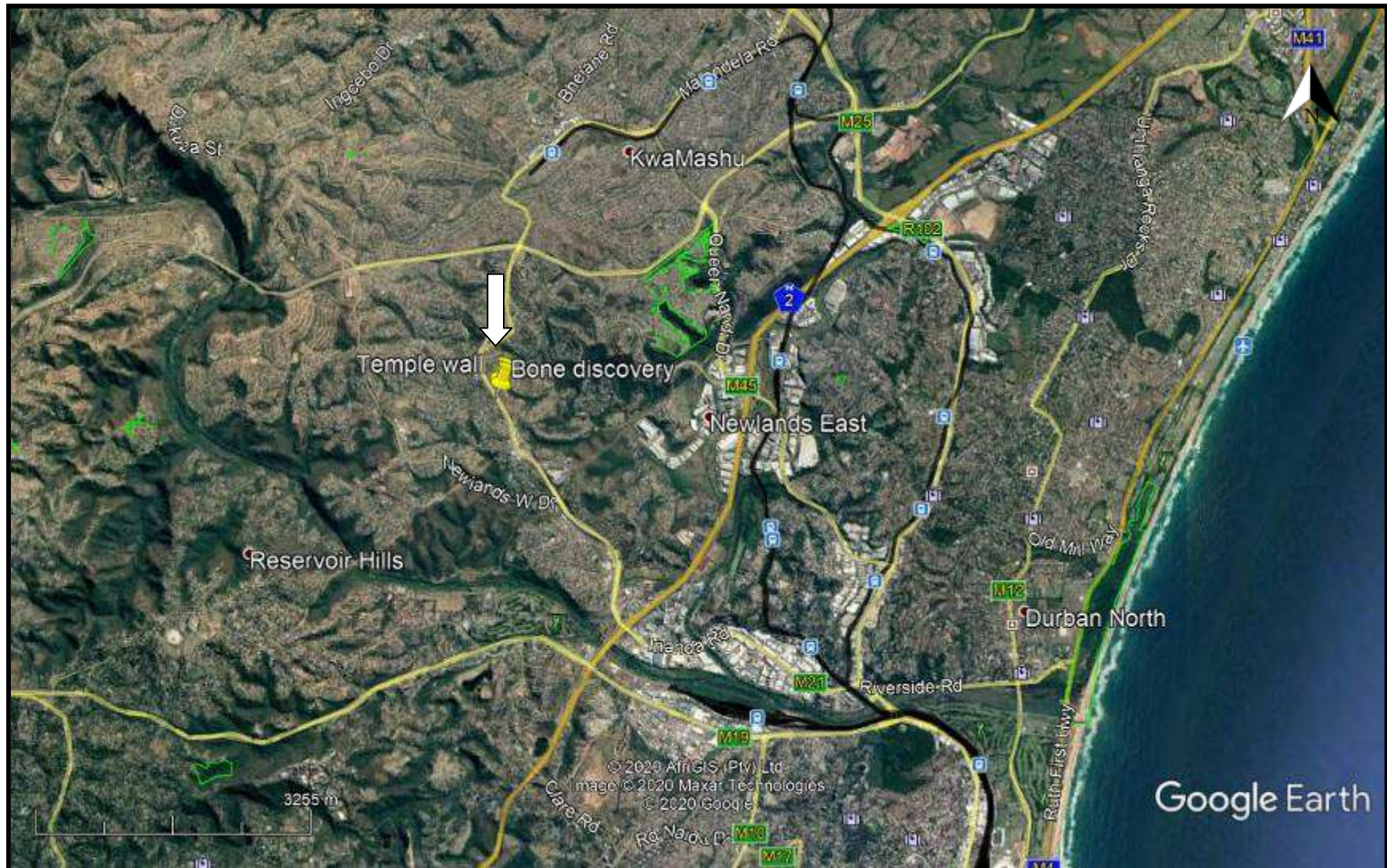


FIG. 2: AERIAL OVERVIEW OF THE STUDY AREA

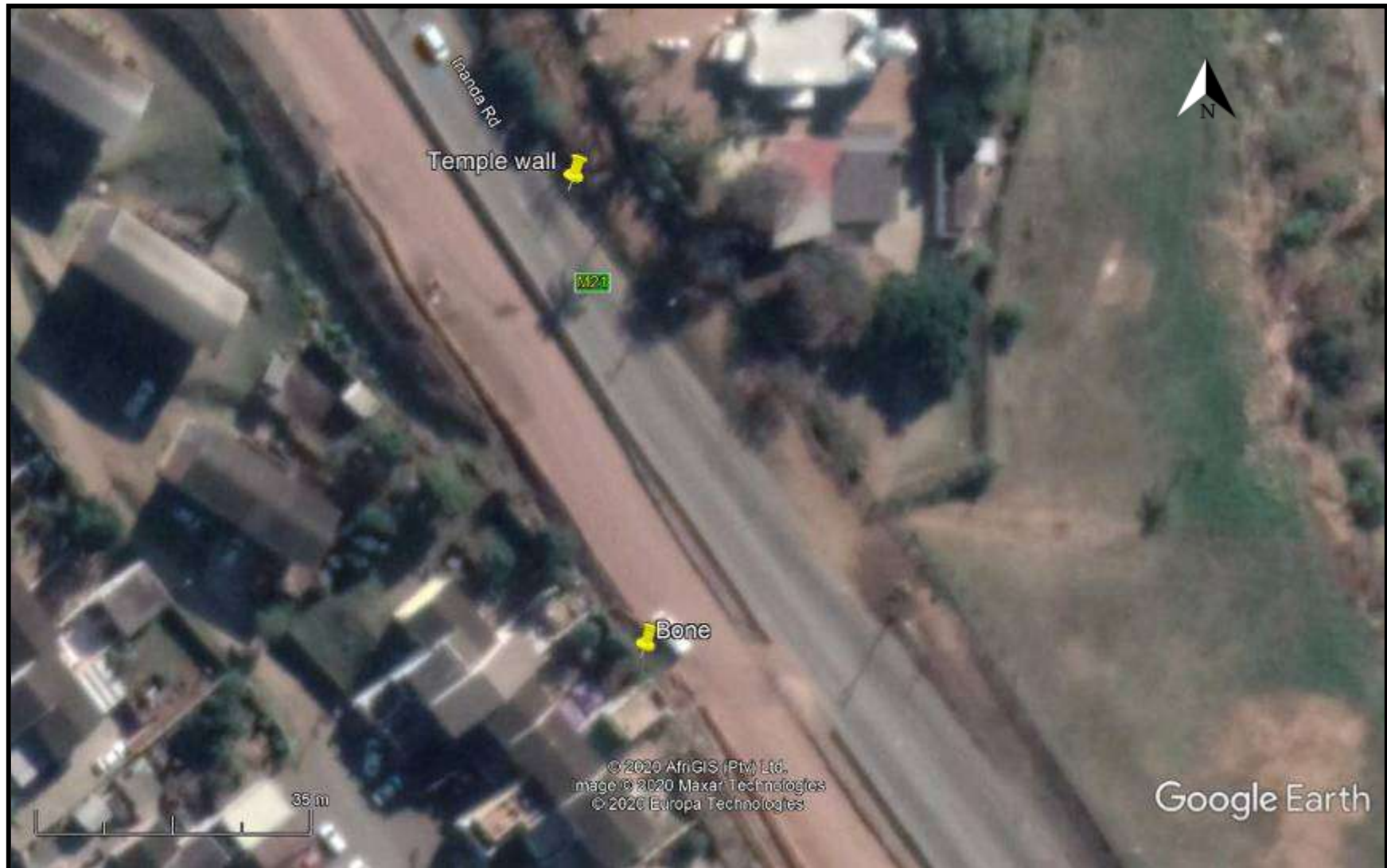
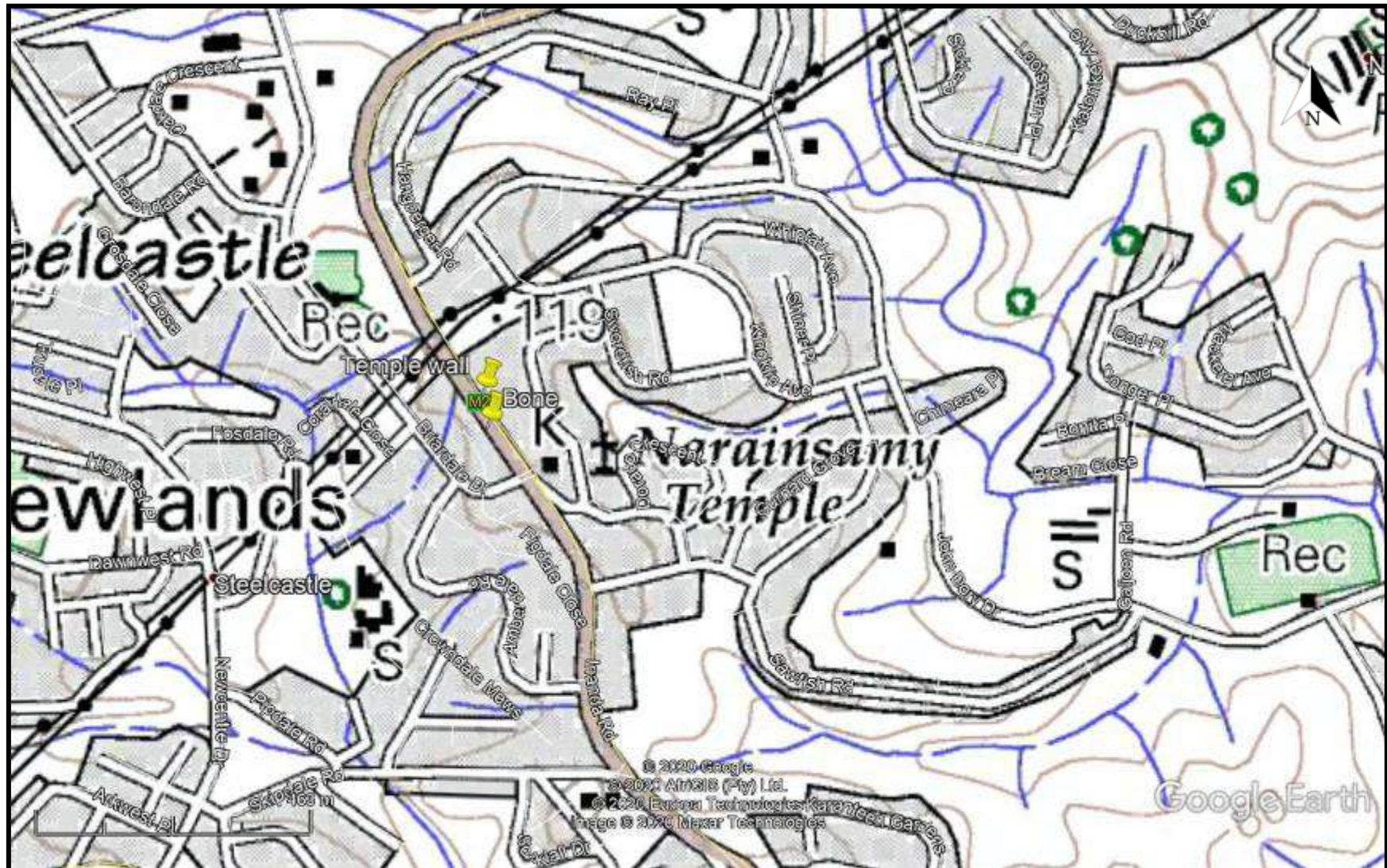


FIG. 3: TOPOGRAPHICAL OVERVIEW OF THE EASTERN STUDY AREA (1996)



DESKTOP STUDY

The desktop study consisted of analysing various maps for evidence of prior habitation in the study area, as well as for previous archaeological surveys. The archaeological database indicates that there are archaeological sites in the general area (fig. 4). These sites include all types of Stone Age and Iron Age sites. No sites occur in the study area.

No national monuments, battlefields, or historical cemeteries are known to occur in the study area. No buildings occur in the study area, apart from the Temple across the road (fig. 5).

The desktop indicates that there are no historical attributes to this part of the road.

SITE VISIT

A site visit was undertaken 7 September 2020 with Naidu Consultant staff. The pit was still exposed (fig. 6). The pit is not a pit per se, rather an accumulation of debris alongside the fence. The artefacts included animal bones and plastic suggesting it is recent in age.

These are not archaeological, nor historical, and no further mitigation is required.

FIG. 4: LOCATION OF KNOWN HERITAGE SITES NEAR THE STUDY AREA

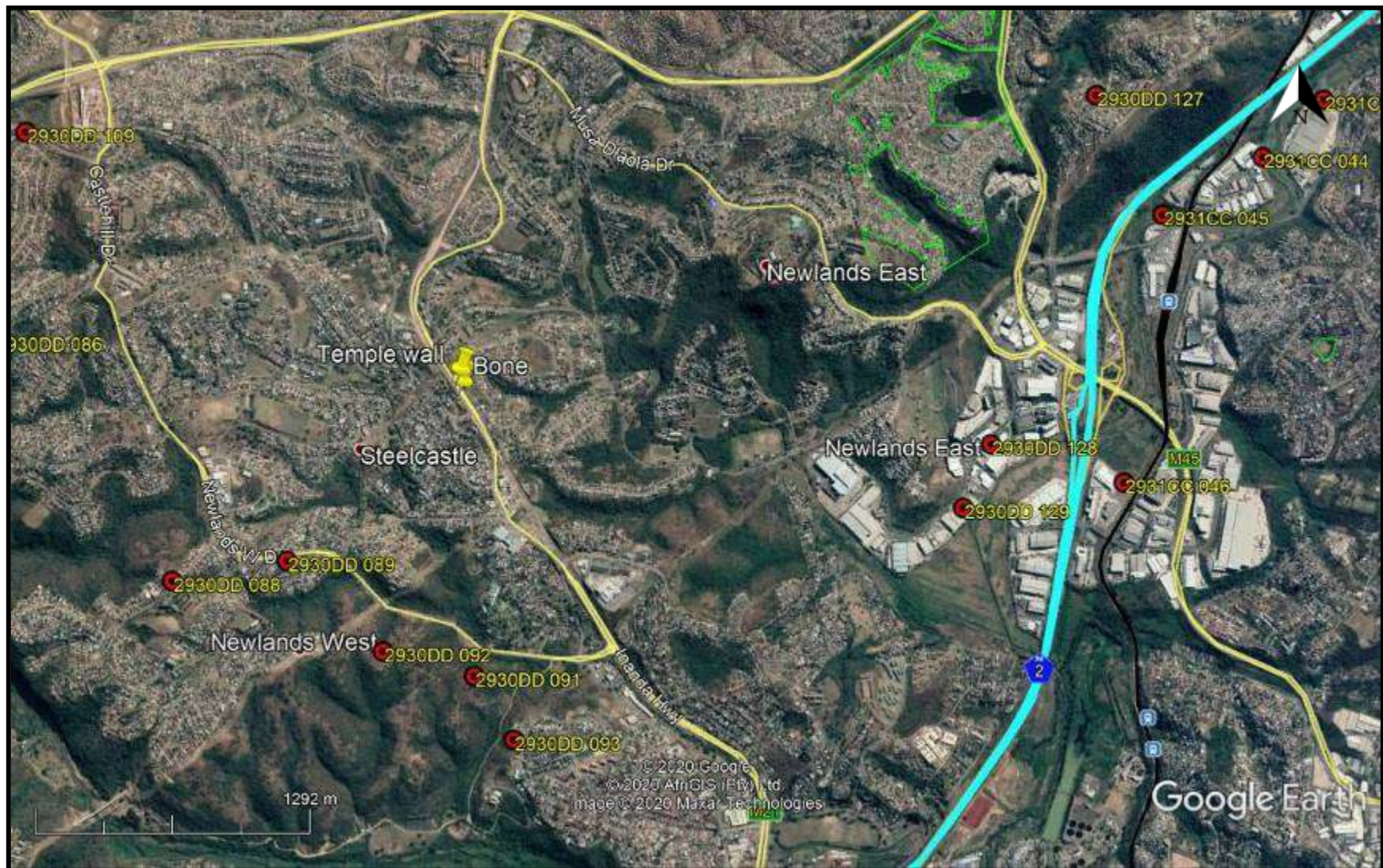


FIG. 5: STUDY AREA IN 1944

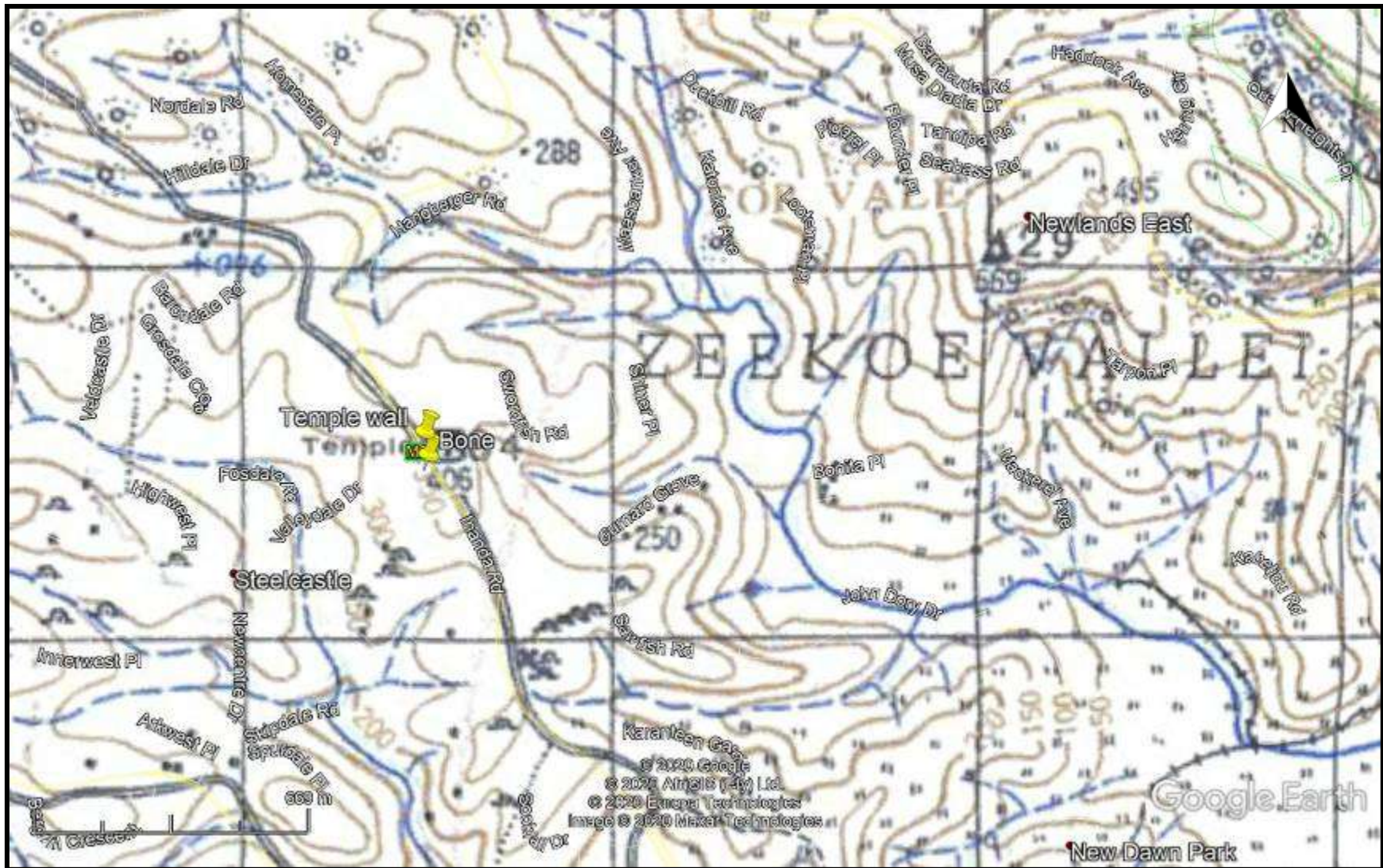


FIG. 6: VIEWS OF ARTEFACTS IN THE CUTTING



CONCLUSION

Naidu Consulting contracted Umlando to assess a pit with artefacts that was exposed by the Inanda Road upgrade.

The pit was considered to be recent in age due to plastic being associated with the bones.

No further mitigation is required.

EXPERIENCE OF THE HERITAGE CONSULTANT

Gavin Anderson has a M. Phil (in archaeology and social psychology) degree from the University of Cape Town. Gavin has been working as a professional archaeologist and heritage impact assessor since 1995. He joined the Association of Professional Archaeologists of Southern Africa in 1998 when it was formed. Gavin is rated as a Principle Investigator with expertise status in Rock Art, Stone Age and Iron Age studies. In addition to this, he was worked on both West and East Coast shell middens, Anglo-Boer War sites, and Historical Period sites.

DECLARATION OF INDEPENDENCE

I, Gavin Anderson, declare that I am an independent specialist consultant and have no financial, personal or other interest in the proposed development, nor the developers or any of their subsidiaries, apart from fair remuneration for work performed in the delivery of heritage assessment services. There are no circumstances that compromise the objectivity of my performing such work.

A handwritten signature in black ink, appearing to read 'Gavin Anderson', with a horizontal line underneath.

Gavin Anderson
Archaeologist/Heritage Impact Assessor