

**DESKTOP PALAEOLOGICAL IMPACT ASSESSMENT FOR THE PROPOSED
CULTIVATED FIELDS AT INCHGARTH, HIMEVILLE, KWAZULU-NATAL**

Gary Trower
P.O. Box 2878
Welkom
9460

PhD candidate (Archaeology) University of the Witwatersrand
Masters (Environmental Management) University of the Free State, 2010
Honours (Palaeontology) University of the Witwatersrand, 2007
Majors (Botany, Zoology, Archaeology) University of Cape Town, 1999

28 May 2021

Declaration of Consultants independence

I, Gary Trower, am an independent consultant and have no business, financial, personal or other interest in the proposed development project in respect of which I was appointed to do a palaeontological assessment other than fair remuneration for work performed. There are no circumstances whatsoever that compromise the objectivity of this specialist performing such work.

A handwritten signature in black ink, appearing to read 'G. Trower', with a large, stylized flourish above the name.

Gary Trower

Introduction

This desktop study relates to a proposed establishment of cultivated fields near Inchgarth, Himeville (Figure 1 & 2). The proposed development is situated within an area where the underlying geology has an insignificant palaeo-sensitivity rating on the SAHRIS map as it comprises of dolerite (www.sahra.org.za/sahris/map/palaeo). However, a very small portion of the site has a high palaeo-sensitivity rating and these deposits may contain some palaeontological material. A desktop palaeontological assessment was thus necessary to evaluate the likelihood of fossil material being present within the boundaries of the proposed development, and to evaluate whether any further palaeontological assessment is required.

In terms of the National Environmental Management Act 107 of 1998 and Section 38 (8) of the National Heritage Resources Act 25 of 1999 (sections 34-36), all aspects of heritage are protected. Proposed developments that are likely to impact on heritage resources (i.e. historical, archaeological, palaeontological & cosmological) require a desktop and/or field assessment to gauge the importance of such resources in order to ensure that such sites are not damaged or destroyed by developments which could negatively impact them. Identified heritage resources should be recorded through detailed documentation, mitigation measures applied if resources are threatened, or collection and/or a rescue excavation carried out if necessary.



Figure 1: Satellite image showing the location of the site footprint within the regional landscape (indicated by the red polygon), located just to the north-east of Himeville at Inchgarth. Modified from Google Earth, AfriGIS 2021



Figure 2: Satellite image showing a close-up view of the location of the site footprint. As can be seen in the image, a drainage line moves through the property and a small buffer zone on either side of this streamlet (indicated with the orange polygon) is recommended in order to preserve the integrity of the system, as well as to preserve any *in situ* archaeological material which may be present adjacent to the streamlet. Modified from Google Earth, AfriGIS 2021

Geology

The majority of the bedrock beneath the proposed cultivated field comprises of dolerite, an igneous rock-type which by its nature does not contain fossils. A very small percentage of the bedrock beneath the site footprint is sedimentary in origin and belongs to the long-term sequence which accumulated within the giant inland sea of the Karoo Basin. Rocks of the Karoo Basin are rich repositories for palaeontological material, necessitating measures to minimize activities which may disturb or destroy fossils preserved in underlying beds.

The small patch of palaeontologically-relevant geology at the site comprises of early Triassic deposits of the Tarkastad Formation, Beaufort Group. This sedimentary package accumulated as channel (sandstone) and overbank (mudstone) deposits from drainage lines which flowed into the ancient inland sea and comprises of fine to medium-grained sandstone and blue, green and maroon mudstone (Figure 3). These deposits form an important component and subdivision of the stratigraphy of the Karoo Supergroup, an extensive inland basin which preserves a rich array of fossil plants, insects, fish and tetrapod fauna which existed through the Carboniferous, Permian and Triassic of southern Gondwana (Rubidge 2005, Smith *et al.* 1993). The existence of a depositional environment in this palaeo-landscape means that fossil lifeforms which flourished during the early Triassic may be present within this geological unit, and this is also the reason why it has a high palaeo-sensitivity rating of red (Figure 4).



Figure 3: Map showing the geology of the region, where the proposed development (occurring within the black circle) will take place on top of dolerite (pink), with a very small portion of the site occurring on early Triassic-aged deposits (lime green). These rocks form part of the Tarkastad Formation of the Beaufort Group, indicated by a black arrow in the legend. Modified from 2928 Drakensberg, 1:250 000 Geological Series, Council for Geoscience, 1981)

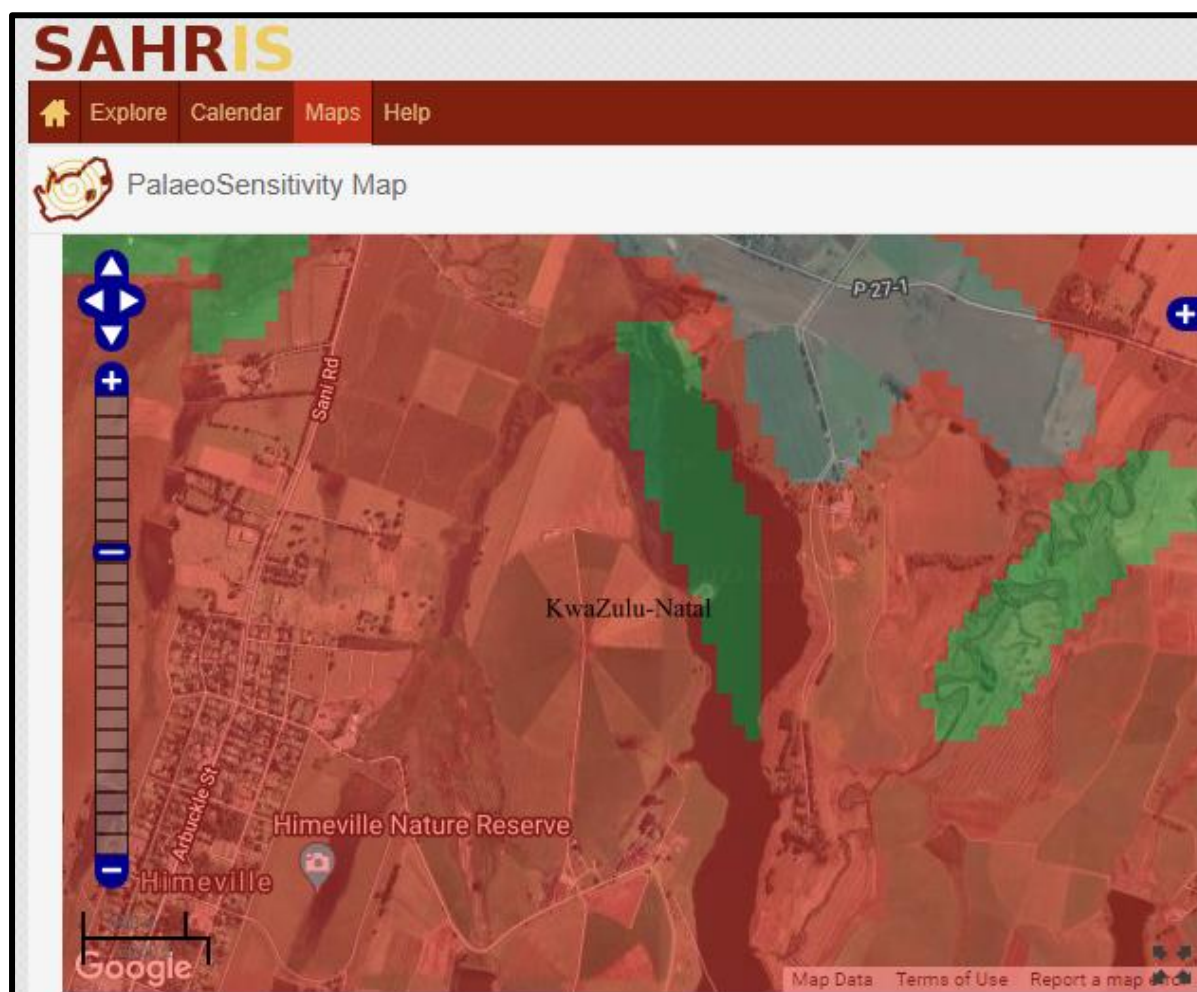


Figure 4: Map of how the geology in Fig.3 translates into palaeo-sensitivity. The geological unit which occurs beneath the site footprint (grey patch) represents dolerite, an intrusive igneous rock type which has a zero palaeo-sensitivity rating. The red corresponds to the Tarkastad Formation of the Beaufort Group, a rock type with a high likelihood of containing significant fossil occurrences, whereas the green corresponds to Quaternary alluvial deposits and has a moderate sensitivity rating. Only two small patches (bottom central and north-eastern corner) of the site footprint occurred on highly sensitive bedrock. Modified from the SAHRIS map, www.sahra.org.za/sahris/map/palaeo

Site observations

An aerial survey of the study site was carried out using Google Earth, Google Street Maps, the relevant geology map of the area (2928 Drakensberg) and the SAHRIS palaeo-sensitivity map. These were all used in combination to gain an understanding of the site features, as well as the underlying bedrock within the site footprint and how it ranked in terms of possible fossil occurrences.

The site footprint is located approximately 4 kilometres north-east of Himeville, adjacent to a gravel road at GPS coordinates 29° 43' 42" S, 29° 32' 50.4" E (Figure 1 & 2). The proposed site consists of an open field of grassland with a drainage line running through it and the terrain slopes to the south. It occurs on a patch of dolerite and this geological unit is given a zero/insignificant palaeo-sensitivity shading of grey on the SAHRIS map (Figure 3 & 4). Being an igneous rock, there is no chance of fossils being present in this geological unit. However, two very small patches of potentially fossiliferous bedrock corresponding to the Tarkastad Formation of the Beaufort Group also occur beneath the site footprint. The bedrock is capped by an upper soil horizon and is not exposed at the surface. It would not be possible to plough the field if no soil layer was present and it is very unlikely that the raking action of the plough's teeth will reach beyond this upper soil layer, so will therefore pose no threat to underlying fossil-bearing rock.

Although out-of-context surface scatters of stone tools or ceramics may be present, Quaternary fossils are unlikely to be preserved adjacent to the streamlet crossing through the site as there is no evidence in the satellite images of significant channel and overbank deposits where fossils could become trapped. The soil chemistry is also generally unsuitable for Pleistocene fossil preservation.

To better evaluate the site, the table below summarizes the palaeontological impact significance at the site.

Assessing Impact Significance

Criteria	without mitigation	with mitigation
Extent/spatial scale of impact	local	local
Duration of impact	medium term	medium term
Intensity/severity of impact	low	low
Probability of impact	improbable	improbable
Consequence	low	low
Confidence	high	high
Significance	very low	very low
Reversibility	irreversible	
Loss of resource	low	
Mitigation potential	none	

Identified heritage resources (NHRA status)

Formal protections	
National Heritage site (Section 27)	none
Provincial Heritage site (Section 27)	none
Provisional Protection (Section 29)	none
Place listed in heritage register (Section 30)	none
General protections	
Palaeontological site or material (Section 35)	improbable

Contingency plan for possible palaeontological discoveries:

CHANCE FIND PROTOCOL

Based on the work of Almond *et al.* (2009) and Groenewald *et al.* (2014) and summarised on the SAHRIS website (www.sahra.org.za/sahris/map/palaeo), if a development occurs within a red zone a desktop study is required, as well as a phase 1 Palaeontological Impact Assessment (PIA) comprising a field survey and recording of fossils. A phase 2 PIA is also required, which entails the rescue of fossil material during construction activities, as well as the compulsory application for a collection and destruction permit. If the development occurs in an orange zone, a desktop survey as well as a phase 1 PIA comprising of a field survey and collection of fossils is compulsory. A prior application for a collection permit is therefore recommended and a phase 2 PIA may be necessary during the construction phase of the project. If the development occurs in a green zone, a desktop survey as well as phase 1 PIA comprising a field survey is recommended. Lastly developments which occur in a blue or grey zone may require a desktop survey, based on the known heritage sites in the area as well as the nature of surrounding geological units.

The normal procedure for recovering palaeontological material would be to identify areas which show investigative potential through a concentration of fossils and whose recovery and preparation could address certain scientific questions. The process would then entail obtaining permission from the landowner/s and applying to SAHRA (South African Heritage Resources Agency) or another provincial heritage agency for a collection permit to excavate or remove blocks of bedrock for preparation in the lab. This is a slow and time-consuming process which requires the skills of a field archaeologist/palaeontologist to spot worthy material within geological/stratigraphic exposures, and skilled fossil excavators and/or preparators who can successfully recover fossils from sediment or slabs of bedrock.

But in the case of developments fossils may be exposed which were not being targeted as a part of a formal scientific investigation, which then requires intervention to ensure that such heritage resources are documented and evaluated, and possibly recovered. In this way, construction activities can provide an opportunity for scientists in that sediments or bedrock and other heritage related material will be exposed which otherwise would have gone unnoticed as it was hidden from view and would have been costly to excavate.

Heritage consultants such as palaeontologists are required to evaluate proposed development sites in the hope of recording and/or recovering important objects and artefacts before they are damaged or destroyed, but during the entire timeline of a project a PIA consultant is generally only on site for a few hours. Having a palaeontologist on site to examine every scoop of a back actor/JCB would be very costly and impractical, so additional site visits may be required for certain large-scale projects, or developments in highly sensitive areas. If fossils are unearthed during the rest of the project timeline when no palaeontologist is on site, they may be difficult for the on-site layman to identify as many geological formations superficially resemble palaeontological material. Pseudo-fossils and certain mineral deposits often form into a variety of shapes which may closely resemble plant and animal fossils, making it more difficult for laypersons to positively identify chance finds in the field. With certain projects it is therefore recommended that training be provided to on-site staff on fossil identification in order to increase the chances of observing palaeontological material that may be present within the boundaries of the site footprint.

It is not the responsibility of site workers to keep an eye out for heritage objects neither are they likely to have had the appropriate training on what to look for, but they are on the ground witnessing and observing. This is a helpful tool when there is a flow of information from on-site staff to management and protocol dictates that you convey when something unusual or out of the ordinary is observed during work operations. The probability of on-site

foremen or construction workers operating heavy earth moving equipment and working to a strict time schedule spotting heritage objects amongst tons of bedrock or sediment is unlikely but nonetheless possible, especially after having received basic training on what to look out for. In South Africa and around the world many important archaeological and palaeontological discoveries have been made during construction projects, and companies and individuals can play their part by following the law and making the effort to report heritage resources which have been unearthed during digging operations. In so doing, developers can improve their public image and potentially contribute to a rare fossil or object reaching a museum or tertiary institution where it can be studied and eventually displayed to the public as heritage belongs to the entire nation and should be preserved as best as possible.

If by chance fossils or any other heritage-related material were to be discovered, which were not anticipated in this desktop report, the activity causing the exposure of the material (construction, ploughing, etc.) would need to cease immediately and a protocol should be followed whereby the relevant provincial or national heritage custodians in the relevant province would need to be informed. Developers would also need to acquire the services of a suitably qualified palaeontologist to rank the significance of the discoveries. If anything relevant is observed, mitigation measures may be necessary and an application for a collection permit may be required. A site visit (Phase 1 and possibly Phase 2) will be necessary so that scientists can be given the opportunity to record and/or recover fossil material if it is ranked as significant and likely to make a positive contribution to the field of science.

Assumptions and limitations

According to the amended 2017 EIA regulations, various assumptions and limitations need to be stated when reporting on proposed developments. A key assumption for this report is that the kml/kmz file sent to the heritage specialist accurately conveys the layout and nature of the development, which is not always the case as plans are often revised; because the site layout has not been accurately drawn in Google Earth; or lastly because the developers have understated and downplayed the degree, severity, nature or extent of the development so as to make it seem less impactful to the environment. A further assumption is that the geological maps used in this assessment are accurate and up to date, which may not be the case as there is a continuous refinement and revision of the geological model through new scientific research, some of which may still need to become incorporated into available maps.

A limitation with large scale maps (1:250 000) is that smaller outcrops of fossiliferous bedrock may not be indicated within the represented geological model. In addition, several potentially fossiliferous outcrops may have been weathered and eroded over millennia, buried under younger deposits such as alluvial and colluvial sediments, or capped by topsoil. Palaeontologically-sensitive bedrock may have also been metamorphosed through its contact with intrusive lavas, damaging or destroying fossil specimens along the contact zone.

The professional opinion given in this PIA report is based on the results of a thorough desktop study which was used to gauge the fossiliferous potential of the bedrock likely to be exposed during the proposed development, and the impact significance. This process involved careful scrutiny of the best available maps and data sets and all attempts were made to take a holistic, informed decision. Yet in spite of this, it is possible that fossils may be present somewhere along the route of the proposed development but are not regarded as significant enough to warrant a site visit. Moreover, certain predictions about the likelihood

of encountering fossils was based on all available evidence and may prove to be less or more likely than anticipated.

As a general rule direct field observations are the best method to gauge the degree to which palaeontological material may be present on site, whether eroding out or visible on the surface. As many developments require a degree of digging down into the soil and/or underlying stratigraphy, fossils will be hidden from view due to their buried nature and will only be exposed by the action of a back-actor or once they have started eroding out from the stratigraphy they are preserved in.

Lastly, it is assumed that the developers will respect the guidelines set out in the laws of South Africa with regards to good environmental management practices and policies, and will immediately cease all construction if any fossiliferous material is discovered. It is also assumed that developers will practice integrity and embrace an unwavering mind-set with regards to respecting and protecting all aspects of heritage, including due consideration for the fact that such objects cannot simply be sacrificed to meet project deadlines.

Conclusion and recommendations

The proposed development is unlikely to have any impact on palaeontological resources. No further palaeontological investigation is required and the project can proceed as planned. More than 90% of the rock outcrop which occurs beneath the site footprint is dolerite, which has a zero possibility of containing fossil material. Only a very small portion of the proposed site layout has highly sensitive bedrock, but this is capped by a layer of soil and the proposed field would not be possible to plough if the rock was right at the surface. The ploughing action of the machinery is therefore unlikely to reach or even damage buried fossiliferous

rock along this very small portion of the site as the bedrock is buffered by this upper soil horizon. A reasonable buffer zone will have to be maintained from the edge of the ploughed field to the maximum height reached by the streamlet in the rainfall season (orange polygon, Fig.2) in order to ensure the proper functioning of this drainage line, and to ensure possible *in situ* archaeological artefacts associated with this water source will not be uprooted through the ploughing action.

If any palaeontological or heritage-related material were to be unearthed during construction/farming activities developers are reminded that according to the National Heritage Resources Act 1999 (Act No. 25) and KwaZulu-Natal Heritage Act 2008 (Act No. 4), work should immediately cease and the **Chance Find Protocol** outlined above should be followed to ensure that developments comply with the law, and to ensure that a rare object/fossil stands a good chance of being recorded and/or relocated before being damaged or destroyed by development activities which endanger them.

References

- 1) Almond, J.E., De Klerk, B. & Gess, R., 2009. *Palaeontological Heritage of the Eastern Cape*. Internal report, SAHRA
- 2) Environmental Impact Regulations of 2014, amended 2017
- 3) Evolutionary Studies Institute fossil collection database
- 4) Prins, F., 2021. *Phase 1 Heritage Impact Assessment of the proposed Umlaas petro-port on Erf 34, Umlaas road, Mkhambathini local municipality, Camperdown, KwaZulu-Natal*

- 5) Groenewald, G.H., Groenewald, D.P. & Groenewald, S.M., 2014. *Palaeontological Heritage of the Free State, Gauteng, Limpopo, Mpumalanga and North West provinces*. Internal Palaeotechnical Reports, SAHRA
- 6) Rubidge, B.S. 2005. Re-uniting lost continents - fossil reptiles from the ancient Karoo and their wanderlust. *South African Journal of Geology* 108 (1): 135-172
- 7) Smith, R.M.H., Eriksson, P.G. and Botha, W.J. 1993. A review of the stratigraphy and sedimentary environments of the Karoo-aged basins of Southern Africa. *Journal of African Sciences* 16: 143-169