

**PALAEONTOLOGICAL DESKTOP ASSESSMENT OF THE EXPANSION OF THE JAN KEMPDORP CEMETRY  
ON PORTION 43 OF FARM GULDENSKAT 36-HN, NORTHERN CAPE PROVINCE**

**Compiled for:**

**NSVT CONSULTANTS**

PO Box 42452

Heuwelsig

9332

**2 May 2019**

**Prepared by:**

**BANZAI ENVIRONMENTAL (PTY) LTD**

## Declaration of Independence

General declaration:

- I, Elize Butler, declare that –
- I act as the independent Palaeontologist in this application
- I will perform the work relating to the application in an objective manner, even if this results in views and findings that are not favourable to the applicant
- I declare that there are no circumstances that may compromise my objectivity in performing such work;
- I have expertise in conducting palaeontological impact assessments, including knowledge of the Act, Regulations and any guidelines that have relevance to the proposed activity;
- I will comply with the Act, Regulations and all other applicable legislation;
- I will take into account, to the extent possible, the matters listed in section 38 of the NHRA when preparing the application and any report relating to the application;
- I have no, and will not engage in, conflicting interests in the undertaking of the activity;
- I undertake to disclose to the applicant and the competent authority all material information in my possession that reasonably has or may have the potential of influencing - any decision to be taken with respect to the application by the competent authority; and - the objectivity of any report, plan or document to be prepared by myself for submission to the competent authority;
- I will ensure that information containing all relevant facts in respect of the application is distributed or made available to interested and affected parties and the public and that participation by interested and affected parties is facilitated in such a manner that all interested and affected parties will be provided with a reasonable opportunity to participate and to provide comments on documents that are produced to support the application;
- I will provide the competent authority with access to all information at my disposal regarding the application, whether such information is favourable to the applicant or not
- All the particulars furnished by me in this form are true and correct;
- I will perform all other obligations as expected from a heritage practitioner in terms of the Act and the constitutions of my affiliated professional bodies; and
- I realise that a false declaration is an offence in terms of regulation 71 of the Regulations and is punishable in terms of section 24F of the NEMA.

**Disclosure of Vested Interest**

I do not have and will not have any vested interest (either business, financial, personal or other) in the proposed activity proceeding other than remuneration for work performed in terms of the Regulations;

**PALAEONTOLOGICAL CONSULTANT:**

Banzai Environmental (Pty) Ltd

**CONTACT PERSON:**

Elize Butler

Tel: +27 844478759

Email: elizebutler002@gmail.com

SIGNATURE:

A handwritten signature in black ink, appearing to read 'Elize Butler', is positioned to the right of the 'SIGNATURE:' label.

The Palaeontological Impact Assessment report has been compiled taking into account the NEMA Appendix 6 requirements for specialist reports as indicated in the table below.

*Table 1:Nema Requirements*

<b>NEMA Regs (2014) - Appendix 6</b>	<b>Relevant section in report</b>
1. (1) A specialist report prepared in terms of these Regulations must contain-	
a) details of- <ul style="list-style-type: none"> <li>i. the specialist who prepared the report; and</li> <li>ii. the expertise of that specialist to compile a specialist report including a curriculum vitae;</li> </ul>	Page ii of Report – Contact details and company and Appendix 1
b) a declaration that the specialist is independent in a form as may be specified by the competent authority;	Page ii-iii
c) an indication of the scope of, and the purpose for which, the report was prepared;	Section 4 – Objective
(cA) an indication of the quality and age of base data used for the specialist report;	Section 5 – Geological and Palaeontological history
(cB) a description of existing impacts on the site, cumulative impacts of the proposed development and levels of acceptable change;	Section 9
d) the date, duration and season of the site investigation and the relevance of the season to the outcome of the assessment;	N/A Desktop assessment
e) a description of the methodology adopted in preparing the report or carrying out the specialised process inclusive of equipment and modelling used;	Section 7 Methodology
f) details of an assessment of the specific identified sensitivity of the site related to the proposed activity or activities and its associated structures and infrastructure, inclusive of a site plan identifying site alternatives;	Section 1, Section 5, Section 10
g) an identification of any areas to be avoided, including buffers;	Desktop assessment

h) a map superimposing the activity including the associated structures and infrastructure on the environmental sensitivities of the site including areas to be avoided, including buffers;	Section 5
i) a description of any assumptions made and any uncertainties or gaps in knowledge;	Section 7.1.– Assumptions and Limitation
j) a description of the findings and potential implications of such findings on the impact of the proposed activity, including identified alternatives on the environment or activities;	Section 10
k) any mitigation measures for inclusion in the EMPr;	Section 10
l) any conditions for inclusion in the environmental authorisation;	N/A
m) any monitoring requirements for inclusion in the EMPr or environmental authorisation;	N/A
n) a reasoned opinion- i. as to whether the proposed activity, activities or portions thereof should be authorised; (iA) regarding the acceptability of the proposed activity or activities; and ii. if the opinion is that the proposed activity, activities or portions thereof should be authorised, any avoidance, management and mitigation measures that should be included in the EMPr, and where applicable, the closure plan;	Section 10 – Conclusion
o) a description of any consultation process that was undertaken during the course of preparing the specialist report;	Not applicable.
p) a summary and copies of any comments received during any consultation process and where applicable all responses thereto; and	Not applicable..
q) any other information requested by the competent authority.	Not applicable.

2) Where a government notice <i>gazetted</i> by the Minister provides for any protocol or minimum information requirement to be applied to a specialist report, the requirements as indicated in such notice will apply.	Refer to section 2 and 3 compliance with SAHRA guidelines
--	---

## EXECUTIVE SUMMARY

Phokwane Local Municipality appointed NSVT Consultants, as the independent Environmental Assessment Practitioner to undertake the Basic Assessment process for the expansion of the cemetery on Portion 43 of the Farm Guldenskat 36-HN, Northern Cape Province. Banzai Environmental (Pty) Ltd was in turn appointed to undertake the Palaeontological Desktop Assessment (DIA) assessing the palaeontological impact of the proposed development. The National Heritage Resources Act (No 25 of 1999, section 38) (NHRA), states that a Palaeontological Impact Assessment (PIA) is important to identify the presence of fossil material within the planned development. This DIA is thus necessary to evaluate the effect of the construction on the palaeontological resources.

The proposed cemetery development on Portion 43 of the Farm Guldenskat 36-HN, Northern Cape Province, is entirely underlain by the Rietgat Formation, Platberg Group, Ventersdorp Supergroup. According to the SAHRIS PalaeoMap a moderate palaeontological significance is allocated to this group. It is consequently recommended that no further palaeontological heritage studies, ground truthing and/or specialist mitigation are required pending the discovery of newly discovered fossils. However, a protocol for finds will be required and is included in this report. It is considered that the development of the proposed development is deemed appropriate and feasible and will not lead to detrimental impacts on the palaeontological resources of the area.

If fossil remains are discovered during any phase of construction, either on the surface or exposed by excavations the **Chance Find Protocol** must be implemented by the ECO in charge of these developments. These discoveries ought to be secured (if possible *in situ*) and the ECO ought to alert SAHRA so that appropriate mitigation (documented and collection) can be undertaken by a professional palaeontologist.

The specialist would need a collection permit from SAHRA. Fossil material must be curated in an approved collection (museum or university) and all fieldwork and reports should meet the minimum standards for palaeontological impact studies developed by SAHRA.





## CONTENTS

1	INTRODUCTION .....	4
2	QUALIFICATIONS AND EXPERIENCE OF THE AUTHOR .....	7
3	LEGISLATION .....	7
3.1	National Heritage Resources Act (25 of 1999) .....	7
4	OBJECTIVE .....	8
5	GEOLOGICAL AND PALAEOONTOLOGICAL HERITAGE .....	9
6	GEOGRAPHICAL LOCATION OF THE SITE.....	12
7	METHODS .....	12
7.1	Assumptions and limitations .....	13
8	ADDITIONAL INFORMATION CONSULTED .....	13
9	IMPACT ASSESSMENT METHODOLOGY.....	13
10	FINDINGS AND RECOMMENDATIONS.....	17
11	CHANCE FINDS PROTOCOL.....	18
11.1	Legislation .....	18
11.2	Background .....	18
11.3	Introduction .....	19
11.4	Chance Find Procedure .....	19
12	REFERENCES .....	20

## LIST OF FIGURES

<i>Figure 1:</i> The proposed cemetery expansion indicated in green on Portion 43 of the Farm Guldenskat 36-HN, Northern Cape Province. <i>Map provided by NSVT Consultants</i> .....	5
Figure 2: Topographical map(2724 DD) of the proposed Jan Kempdorp cemetery expansion indicated in purple on Portion 43 of the Farm Guldenskat 36-HN, Northern Cape Province. ....	6
Figure 3: Surface geology of the proposed Jan Kempdorp cemetery expansion indicated in purple on Portion 43 of the Farm Guldenskat 36-HN, Northern Cape Province is entirely underlain by the Rietgat Formation, Platberg Group, Ventersdorp Supergroup. The map was drawn by QGIS Desktop 2.18.18.....	11
Figure 4: Example of a well-preserved stromatolite from the Archaean Era. ....	12

## LIST OF TABLES

Table 1:Nema Requirements .....	iv
Table 2: The rating system .....	14
Appendix 1: CV.....	26

## 1 INTRODUCTION

The Phokwane Municipality proposes to expand the present cemetery by more than 10 hectares on Portion 43 of the Farm Guldenskat 36-HN (Figure 1-2). The cemetery will expand to accommodate 10766 adult and 2572 children graves. According to the Surveyor General, the property falls within the Lekwa Teemane Local Municipality in the North West Province although the title deed of the property is in Phokwane Local Municipality's name.

The facility will include:

- An ablution block,
- parking bays,
- 10m internal roads
- and 5m walkways.

The total extent of the expansion is about 15.6 hectares. An existing gravel access road, will be realigned after branching off from R506 road to access the proposed facility and its length will be 400m. The vacant land will be developed to a cemetery facility and it will be fenced off. The graves dimensions will be per cemetery by-laws of the municipality. The co-ordinate of the proposed site is S27°54'36.83" and E24°52'41.34.

The application for the Environmental Authorisation will be submitted to the Department of Rural, Environment and Agriculture Development as the competent authority since in terms of the Surveyor General, the proposed site is within the North West Province<sup>1</sup>.

---

Information provided by NSVT Consultants



Figure 1: The proposed cemetery expansion indicated in green on Portion 43 of the Farm Guldenskat 36-HN, Northern Cape Province. Map provided by NSVT Consultants.

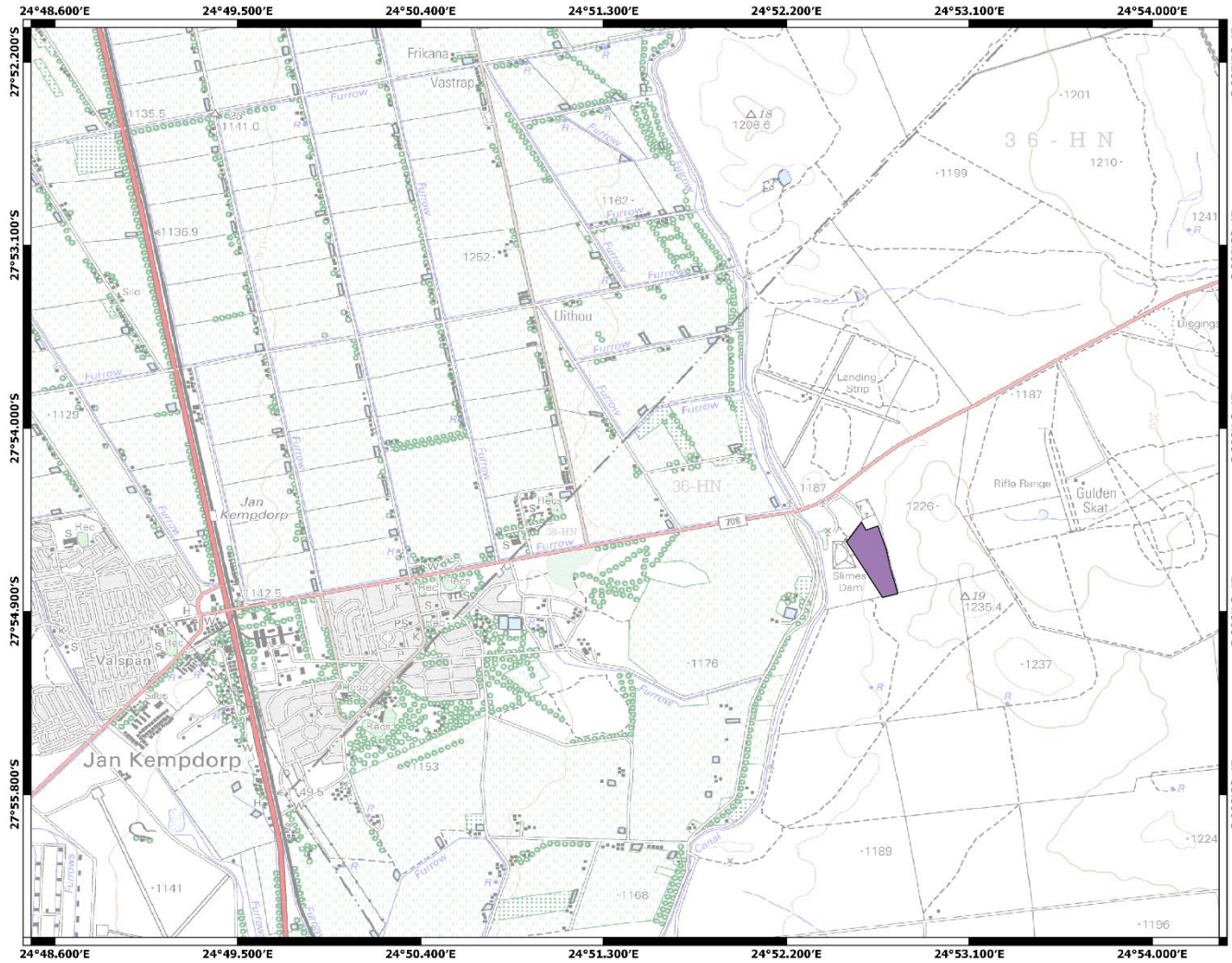


Figure 2: Topographical map (2724 DD) of the proposed Jan Kempdorp cemetery expansion indicated in purple on Portion 43 of the Farm Guldenskat 36-HN, Northern Cape Province.



## **2 QUALIFICATIONS AND EXPERIENCE OF THE AUTHOR**

The author (Elize Butler) has an MSc in Palaeontology from the University of the Free State, Bloemfontein, South Africa. She has been working in Palaeontology for more than twenty-four years. She has extensive experience in locating, collecting and curating fossils, including exploration field trips in search of new localities in the Karoo Basin. She has been a member of the Palaeontological Society of South Africa for 13 years. She has been conducting PIAs since 2014.

## **3 LEGISLATION**

### **3.1 NATIONAL HERITAGE RESOURCES ACT (25 OF 1999)**

Cultural Heritage in South Africa, includes all heritage resources, is protected by the National Heritage Resources Act (Act 25 of 1999) (NHRA). Heritage resources as defined in Section 3 of the Act include **“all objects recovered from the soil or waters of South Africa, including archaeological and palaeontological objects and material, meteorites and rare geological specimens”**.

Palaeontological heritage is unique and non-renewable and is protected by the NHRA. Palaeontological resources may not be unearthed, broken moved, or destroyed by any development without prior assessment and without a permit from the relevant heritage resources authority as per section 35 of the NHRA.

This DIA forms part of the Heritage Impact Assessment (HIA) and adhere to the conditions of the Act. According to **Section 38 (1)**, an HIA is required to assess any potential impacts to palaeontological heritage within the development footprint where:

- the construction of a road, wall, power line, pipeline, canal or other similar form of linear development or barrier exceeding 300 m in length;
- the construction of a bridge or similar structure exceeding 50 m in length;
- any development or other activity which will change the character of a site—  
(exceeding 5 000 m<sup>2</sup> in extent; or
- involving three or more existing erven or subdivisions thereof; or
- involving three or more erven or divisions thereof which have been consolidated within the past five years; or
- the costs of which will exceed a sum set in terms of regulations by SAHRA or a provincial heritage resources authority
- the re-zoning of a site exceeding 10 000 m<sup>2</sup> in extent;

- or any other category of development provided for in regulations by SAHRA or a Provincial heritage resources authority.

#### 4 OBJECTIVE

The objective of a DPIA is to determine the impact of the development on potential palaeontological material at the site.

According to the “SAHRA APM Guidelines: Minimum Standards for the Archaeological and Palaeontological Components of Impact Assessment Reports” the aims of the PIA are: 1) to **identify** the palaeontological status of the exposed as well as rock formations just below the surface in the development footprint 2) to estimate the **palaeontological importance** of the formations 3) to determine the **impact** on fossil heritage; and 4) to recommend how the developer ought to protect or mitigate damage to fossil heritage.

The terms of reference of a DPIA are as follows:

##### **General Requirements:**

- Adherence to the content requirements for specialist reports in accordance with Appendix 6 of the EIA Regulations 2014, as amended;
- Adherence to all applicable best practice recommendations, appropriate legislation and authority requirements;
- Submit a comprehensive overview of all appropriate legislation, guidelines;
- Description of the proposed project and provide information regarding the developer and consultant who commissioned the study,
- Description and location of the proposed development and provide geological and topographical maps
- Provide Palaeontological and geological history of the affected area.
- Identification sensitive areas to be avoided (providing shapefiles/kmls) in the proposed development;
- Evaluation of the significance of the planned development during the Pre-construction, Construction, Operation, Decommissioning Phases and Cumulative impacts. Potential impacts should be rated in terms of the direct, indirect and cumulative:
  - a. **Direct impacts** are impacts that are caused directly by the activity and generally occur at the same time and at the place of the activity.
  - b. **Indirect impacts** of an activity are indirect or induced changes that may occur as a result of the activity.

c. **Cumulative impacts** are impacts that result from the incremental impact of the proposed activity on a common resource when added to the impacts of other past, present or reasonably foreseeable future activities.

- Fair assessment of alternatives (infrastructure alternatives have been provided):
- Recommend mitigation measures to minimise the impact of the proposed development; and
- Implications of specialist findings for the proposed development (such as permits, licenses etc).

## 5 GEOLOGICAL AND PALAEOLOGICAL HERITAGE

The proposed Jan Kempdorp cemetery expansion indicated in purple on Portion 43 of the Farm Guldenskat 36-HN, Northern Cape Province is entirely underlain by the Rietgat Formation, Platberg Group, Ventersdorp Supergroup (Figure 3).

After the stabilization of the Kaapvaal Craton, approximately 3000 to 2100 Million years ago, four basins developed on it. The Ventersdorp Supergroup was the second to last Basin to develop and provides a exceptional volcano-sedimentary supracrustal record. The Ventersdorp Supergroup comprise of the biggest and most wide-spread system of volcanic rocks in the Kaapvaal Craton.

The best exposures of the Ventersdorp Supergroup is in the North West Province, Northern Cape Province as well as Gauteng and southern Botswana. This Supergroup consists of the Kliprivierberg Group (oldest ) which is overlain by the Platberg Group, followed by the sedimentary Bothaville Formation and the volcanic Allanridge Formation (uppermost Ventersdorp unit, youngest Formation).

The Platberg Group is subdivided in four formations namely the Kameeldoorns-, Goedgenoeg-, Makwassie-, and Rietgat Formations. The Rietgat Formation consists of interchanging sedimentary and volcanic rocks. The depth and ratios of sedimentary and volcanic rocks differs throughout the basin. The volcanic rocks consist of andesite, basaltic andesite, dacite and feldspar porphyry. Pyroclastic rocks as well as lava and intercalated sediments (chert and carbonate) with stromatolitic calcarenite (Figure 4) present in this formation (Visser et al, 1975-1976, Buck, 1980).

Algal growth structures, also known as Stromatolites, are fossil structures described from the dolomites of the Transvaal Supergroup (Figure 3). Stromatolites are layered mounds, columns and sheet-like sedimentary rocks. These structures were originally formed by the growth of layer upon

layer of cyanobacteria, a single-celled photosynthesizing microbe. Cyanobacteria are prokaryotic cells (simplest form of modern carbon-based life). Stromatolites are first found in Precambrian rocks and are known as the earliest known fossils. The oxygen atmosphere that we depend on was generated by numerous cyanobacteria photosynthesizing during the Archaean and Proterozoic Era.





Figure 3: Surface geology of the proposed Jan Kempdorp cemetery expansion indicated in purple on Portion 43 of the Farm Guldenskat 36-HN, Northern Cape Province is entirely underlain by the Rietgat Formation, Platberg Group, Ventersdorp Supergroup. The map was drawn by QGIS Desktop 2.18.18..



Figure 4: Example of a well-preserved stromatolite from the Archaean Era.

## **6 GEOGRAPHICAL LOCATION OF THE SITE**

The total extent of the expansion is about 15.6 hectares. An existing gravel access road, will be realigned after branching off from R506 road to access the proposed facility and its length will be 400m. The vacant land will be developed to a cemetery facility and it will be fenced off. The graves dimensions will be per cemetery by-laws of the municipality. The co-ordinate of the proposed site is S27°54'36.83" and E24°52'41.34.

## **7 METHODS**

The aim of a desktop study is to evaluate the possible risk to palaeontological heritage in the proposed development. This include all trace fossils as well as all fossils in the proposed footprint. All possible information is consulted to compile a desktop study and this includes the following: all Palaeontological impact assessment reports in the same area; aerial photos and Google Earth images, topographical as well as geological maps.

## 7.1 Assumptions and limitations

When conducting a DIA several factors can affect the accuracy of the assessment. The focal point of geological maps is the geology of the area and the sheet explanations were not meant to focus on palaeontological heritage. Many inaccessible regions of South Africa have never been reviewed by palaeontologists and data is generally based on aerial photographs alone. Locality and geological information of museums and universities databases have not been kept up to date or data collected in the past have not always been accurately documented.

Comparable Assemblage Zones in other areas is sourced to provide information on the existence of fossils in an area which was not documented in the past. When using similar Assemblage Zones and geological formations for Desktop studies it is generally **assumed** that exposed fossil heritage is present within the footprint. A field-assessment will thus improve the accuracy of the desktop assessment.

## 8 ADDITIONAL INFORMATION CONSULTED

In compiling this report the following sources were consulted:

- The Palaeosensitivity Map from the SAHRIS website.
- 2724 DD Topographical map
- 1: 250 000 2724 Christiana Geological Map.
- A Google Earth map with polygons of the proposed development was obtained from NSVT Consultants.
- Jan Kempdorp cemetery expansion BID

## 9 IMPACT ASSESSMENT METHODOLOGY

Impact assessment must take account of the nature, scale and duration of impacts on the environment whether such impacts are positive or negative. Each impact is also assessed according to the following project phases:

- Construction
- Operation
- Decommissioning

Where necessary, the proposal for mitigation or optimisation of an impact should be detailed. A brief discussion of the impact and the rationale behind the assessment of its significance should also be included. The rating system is applied to the potential impacts on the receiving environment and includes an objective evaluation of the mitigation of the impact. In assessing the significance of each impact the following criteria is used:

*Table 2: The rating system*

<b>NATURE</b>		
Include a brief description of the impact of environmental parameter being assessed in the context of the project. This criterion includes a brief written statement of the environmental aspect being impacted upon by a particular action or activity.		
The Nature of the Impact is the possible destruction of fossil heritage		
<b>GEOGRAPHICAL EXTENT</b>		
This is defined as the area over which the impact will be experienced.		
1	Site	The impact will only affect the site.
2	Local/district	Will affect the local area or district.
3	Province/region	Will affect the entire province or region.
4	International and National	Will affect the entire country.
<b>PROBABILITY</b>		
This describes the chance of occurrence of an impact.		
1	Unlikely	The chance of the impact occurring is extremely low (Less than a 25% chance of occurrence).
2	Possible	The impact may occur (Between a 25% to 50% chance of occurrence).
3	Probable	The impact will likely occur (Between a 50% to 75% chance of occurrence).
4	Definite	Impact will certainly occur (Greater than a 75% chance of occurrence).
<b>DURATION</b>		
This describes the duration of the impacts. Duration indicates the lifetime of the impact as a result of the proposed activity.		
1	Short term	The impact will either disappear with mitigation or will be mitigated through natural processes in a span shorter

		than the construction phase (0 – 1 years), or the impact will last for the period of a relatively short construction period and a limited recovery time after construction, thereafter it will be entirely negated (0 – 2 years).
2	Medium term	The impact will continue or last for some time after the construction phase but will be mitigated by direct human action or by natural processes thereafter (2 – 10 years).
3	Long term	The impact and its effects will continue or last for the entire operational life of the development, but will be mitigated by direct human action or by natural processes thereafter (10 – 30 years).
4	Permanent	The only class of impact that will be non-transitory. Mitigation either by man or natural process will not occur in such a way or such a time span that the impact can be considered indefinite.

#### INTENSITY/ MAGNITUDE

Describes the severity of an impact.

1	Low	Impact affects the quality, use and integrity of the system/component in a way that is barely perceptible.
2	Medium	Impact alters the quality, use and integrity of the system/component but system/component still continues to function in a moderately modified way and maintains general integrity (some impact on integrity).
3	High	Impact affects the continued viability of the system/component and the quality, use, integrity and functionality of the system or component is severely impaired and may temporarily cease. High costs of rehabilitation and remediation.
4	Very high	Impact affects the continued viability of the system/component and the quality, use, integrity and functionality of the system or component permanently ceases and is irreversibly impaired. Rehabilitation and remediation often impossible. If possible rehabilitation and remediation often unfeasible due to extremely high costs of rehabilitation and remediation.

**REVERSIBILITY**

This describes the degree to which an impact can be successfully reversed upon completion of the proposed activity.

1	Completely reversible	The impact is reversible with implementation of minor mitigation measures.
2	Partly reversible	The impact is partly reversible but more intense mitigation measures are required.
3	Barely reversible	The impact is unlikely to be reversed even with intense mitigation measures.
4	Irreversible	The impact is irreversible and no mitigation measures exist.

**IRREPLACEABLE LOSS OF RESOURCES**

This describes the degree to which resources will be irreplaceably lost as a result of a proposed activity.

1	No loss of resource	The impact will not result in the loss of any resources.
2	Marginal loss of resource	The impact will result in marginal loss of resources.
3	Significant loss of resources	The impact will result in significant loss of resources.
4	Complete loss of resources	The impact is result in a complete loss of all resources.

**CUMULATIVE EFFECT**

This describes the cumulative effect of the impacts. A cumulative impact is an effect which in itself may not be significant but may become significant if added to other existing or potential impacts emanating from other similar or diverse activities as a result of the project activity in question.

1	Negligible cumulative impact	The impact would result in negligible to no cumulative effects.
2	Low cumulative impact	The impact would result in insignificant cumulative effects.
3	Medium cumulative impact	The impact would result in minor cumulative effects.
4	High cumulative impact	The impact would result in significant cumulative effects

**SIGNIFICANCE**

Significance is determined through a synthesis of impact characteristics. Significance is an indication of the importance of the impact in terms of both physical extent and time scale, and therefore indicates the level of mitigation required. The calculation of the significance of an impact uses the following formula:

**(Extent + probability + reversibility + irreplaceability + duration + cumulative effect) x magnitude/intensity.**

The summation of the different criteria will produce a non-weighted value. By multiplying this value with the magnitude/intensity, the resultant value acquires a weighted characteristic which can be measured and assigned a significance rating.

Points	Impact significance rating	Description
6 to 28	Negative low impact	The anticipated impact will have negligible negative effects and will require little to no mitigation.
6 to 28	Positive low impact	The anticipated impact will have minor positive effects.
29 to 50	Negative medium impact	The anticipated impact will have moderate negative effects and will require moderate mitigation measures.
29 to 50	Positive medium impact	The anticipated impact will have moderate positive effects.
51 to 73	Negative high impact	The anticipated impact will have significant effects and will require significant mitigation measures to achieve an acceptable level of impact.
51 to 73	Positive high impact	The anticipated impact will have significant positive effects.
74 to 96	Negative very high impact	The anticipated impact will have highly significant effects and are unlikely to be able to be mitigated adequately. These impacts could be considered "fatal flaws".
74 to 96	Positive very high impact	The anticipated impact will have highly significant positive

## 10 FINDINGS AND RECOMMENDATIONS

The proposed cemetery development on Portion 43 of the Farm Guldenskat 36-HN, Northern Cape Province, is entirely underlain by the Rietgat Formation, Platberg Group, Ventersdorp Supergroup. According to the SAHRIS PalaeoMap a moderate palaeontological significance is allocated to this group. It is consequently recommended that no further palaeontological heritage studies, ground truthing and/or specialist mitigation are required pending the discovery of newly discovered fossils. However, a protocol for finds will be required and is included in this report. It is considered that the development of the proposed development is deemed appropriate and feasible and will not lead to detrimental impacts on the palaeontological resources of the area.

If fossil remains are discovered during any phase of construction, either on the surface or exposed by fresh excavations the **Chance Find Protocol** must be implemented by the ECO in charge of these developments. These discoveries ought to be secured (preferably *in situ*) and the ECO ought to alert SAHRA so that appropriate mitigation (*e.g.* documented and collection) can be undertaken by a professional palaeontologist.

The specialist would need a collection permit from SAHRA. Fossil material must be curated in an approved collection (museum or university) and all fieldwork and reports should meet the minimum standards for palaeontological impact studies developed by SAHRA.

## **11 CHANCE FINDS PROTOCOL**

A following procedure will only be followed in the event that fossils are uncovered during excavation.

### **11.1 LEGISLATION**

Cultural Heritage in South Africa (includes all heritage resources) is protected by the **National Heritage Resources Act (Act 25 of 1999) (NHRA)**. According to Section 3 of the Act, all Heritage resources include “**all objects recovered from the soil or waters of South Africa, including archaeological and palaeontological objects and material, meteorites and rare geological specimens**”.

Palaeontological heritage is unique and non-renewable and is protected by the NHRA and are the property of the State. It is thus the responsibility of the State to manage and conserve fossils on behalf of the citizens of South Africa. Palaeontological resources may not be excavated, broken, moved, or destroyed by any development without prior assessment and without a permit from the relevant heritage resources authority as per section 35 of the NHRA.

### **11.2 BACKGROUND**

A fossil is the naturally preserved remains (or traces) of plants or animals embedded in rock. These plants and animals lived in the geologic past millions of years ago. Fossils are extremely rare and irreplaceable. By studying fossils, it is possible to determine the environmental conditions that existed in a specific geographical area millions of years ago.



### 11.3 INTRODUCTION

This informational document is intended for workmen and foremen on construction sites. It describes the actions to be taken when mining or construction activities accidentally uncovers fossil material.

It is the responsibility of the Environmental Officer (EO) of the project to train the workmen and foremen in the procedure to follow when a fossil is accidentally uncovered. In the absence of the EO, a member of the staff must be appointed to be responsible for the proper implementation of the chance find protocol as not to compromise the conservation of fossil material.

### 11.4 CHANCE FIND PROCEDURE

- If a chance find is made the person responsible for the find must immediately **stop working** and all work must cease in the immediate vicinity of the find.
- The person who made the find must immediately **report** the find to his/her direct supervisor which in turn must report the find to his/her manager and the EO or site manager. The EO must report the find to the relevant Heritage Agency (South African Heritage Research Agency, SAHRA). (Contact details: SAHRA, 111 Harrington Street, Cape Town. PO Box 4637, Cape Town 8000, South Africa. Tel: 021 462 4502. Fax: +27 (0)21 462 4509. Web: [www.sahra.org.za](http://www.sahra.org.za)). The information to the Heritage Agency must include photographs of the find, from various angles, as well as the GPS co-ordinates.
- A preliminary report must be submitted to the Heritage Agency within **24 hours** of the find and must include the following: 1) date of the find; 2) a description of the discovery and a 3) description of the fossil and its context (depth and position of the fossil), GPS co-ordinates.
- Photographs (the more the better) of the discovery must be of high quality, in focus, accompanied by a scale. It is also important to have photographs of the vertical section (side) where the fossil was found.

Upon receipt of the preliminary report, the Heritage Agency will inform the ECO (site manager) whether a rescue excavation or rescue collection by a palaeontologist is necessary.

- The site must be secured to protect it from any further damage. **No attempt** should be made to remove material from their environment. The exposed finds must be stabilized and covered by a plastic sheet or sand bags. The Heritage authority will also be able to advise on the most suitable method of protection of the find.

- If the fossil cannot be stabilized the fossil may be collected with extreme care by the ECO (site manager). Fossils finds must be stored in tissue paper and in an appropriate box while due care must be taken to remove all fossil material from the rescue site.
- Once the Heritage authority has issued the written authorization, the developer may continue with the development.

## 12 REFERENCES

ALMOND, J., PETHER, J., 2008. Palaeontological heritage of the Northern Cape. SAHRA Palaeotechnical Report, 143pp

ALMOND, J., PETHER, J, and GROENEWALD, G. 2013. South African National Fossil Sensitivity Map. SAHRA and Council for Geosciences.

BUCK, S.G., 1980. Stromatolite and ooid deposits within fluvial and lacustrine sediments of the Precambrium Ventersdorp Supergroup of South Africa. Precambrium Res., 12:311-330.

DU TOIT, A., 1954. The geology of South Africa. Xii+611pp. Olicier and Boyd, Edinburgh.

GRADSTEIN, F.M., J.G.OGG, M.D. SCHMITZ & G.M.OGG. (Co-ordinators). 2012. The Geologic Time Scale 2012. Boston, USA: Elsevier, 2 volumes plus chart, 1176 pp.

KENT, L.E. 1980. Part 1: Lithostratigraphy of the Republic of South Africa, South West Africa/Namibia and the Republics of Bophuthatswana, Transkei and Venda. SACS, Council for Geosciences, pp. 535-574.

MACRAE, C. 1999. Life etched in stone. Fossils of South Africa. 305 pp. The Geological Society of South Africa, Johannesburg.

MCCARTHY, T. & RUBIDGE, B. 2005. The story of Earth and life: a southern African perspective on a 4.6-billion-year journey. 334pp. Struik, Cape Town.

TANKARD, A.J., JACKSON, M.P.A., ERIKSSON, K.A., HOBDAY, D.K., HUNTER, D.R. & MINTER, W.E.L. 1982. Crustal evolution of southern Africa – 3.8 billion years of earth history, xv + 523pp. Springer Verlag, New York.

VISSER, J.N.J., GROBLER, N.J., JOUBERT, C.W., POTGIETER, C.D., POTGIETER G.J.A. McLAREN, C.H., and LIEBENBERG, J. (1975-1976). The Ventersdorp Group between Taung and Britstown, Northern Cape Province. Ann Geol. Surv. S. Afri. 11: 15-28.

**Appendix: 1: CV**

**ELIZE BUTLER**

**PROFESSION:** Palaeontologist

**YEARS' EXPERIENCE:** 25 years in Palaeontology

**EDUCATION:** B.Sc Botany and Zoology, 1988

University of the Orange Free State

B.Sc (Hons) Zoology, 1991

University of the Orange Free State

Management Course, 1991

University of the Orange Free State

M. Sc. *Cum laude* (Zoology), 2009

University of the Free State

**Dissertation title:** The postcranial skeleton of the Early Triassic non-mammalian Cynodont *Galesaurus planiceps*: implications for biology and lifestyle

Registered as a PhD fellow at the Zoology Department of the UFS

2013 to current

**Dissertation title:** A new gorgonopsian from the uppermost *Daptocephalus Assemblage Zone*, in the Karoo Basin of South Africa

## MEMBERSHIP

Palaeontological Society of South Africa (PSSA) 2006-currently

## EMPLOYMENT HISTORY

Part time Laboratory assistant Department of Zoology & Entomology  
University of the Free State Zoology 1989-  
1992

Part time laboratory assistant Department of Virology  
University of the Free State Zoology 1992

Research Assistant National Museum, Bloemfontein 1993 –  
1997

Principal Research Assistant National Museum, Bloemfontein  
and Collection Manager 1998–currently

## TECHNICAL REPORTS

**Butler, E. 2014.** Palaeontological Impact Assessment of the proposed development of private dwellings on portion 5 of farm 304 Matjesfontein Keurboomstrand, Knysna District, Western Cape Province. Bloemfontein.

**Butler, E. 2014.** Palaeontological Impact Assessment for the proposed upgrade of existing water supply infrastructure at Noupoort, Northern Cape Province. 2014. Bloemfontein.

**Butler, E. 2015.** Palaeontological impact assessment of the proposed consolidation, re-division and development of 250 serviced erven in Nieu-Bethesda, Camdeboo local municipality, Eastern Cape. Bloemfontein.

**Butler, E. 2015.** Palaeontological impact assessment of the proposed mixed land developments at Rooikraal 454, Vrede, Free State. Bloemfontein.

**Butler, E. 2015.** Palaeontological exemption report of the proposed truck stop development at Palmiet 585, Vrede, Free State. Bloemfontein.

**Butler, E. 2015.** Palaeontological impact assessment of the proposed Orange Grove 3500 residential development, Buffalo City Metropolitan Municipality East London, Eastern Cape. Bloemfontein.

**Butler, E. 2015.** Palaeontological Impact Assessment of the proposed Gonubie residential development, Buffalo City Metropolitan Municipality East London, Eastern Cape Province. Bloemfontein.

**Butler, E. 2015.** Palaeontological Impact Assessment of the proposed Ficksburg raw water pipeline. Bloemfontein.

**Butler, E. 2015.** Palaeontological Heritage Impact Assessment report on the establishment of the 65 MW Majuba Solar Photovoltaic facility and associated infrastructure on portion 1, 2 and 6 of the farm Witkoppies 81 HS, Mpumalanga Province. Bloemfontein.

**Butler, E. 2015.** Palaeontological Impact Assessment of the proposed township establishment on the remainder of portion 6 and 7 of the farm Sunnyside 2620, Bloemfontein, Mangaung metropolitan municipality, Free State, Bloemfontein.

**Butler, E. 2015.** Palaeontological Impact Assessment of the proposed Woodhouse 1 photovoltaic solar energy facilities and associated infrastructure on the farm Woodhouse729, near Vryburg, North West Province. Bloemfontein.

**Butler, E. 2015.** Palaeontological Impact Assessment of the proposed Woodhouse 2 photovoltaic solar energy facilities and associated infrastructure on the farm Woodhouse 729, near Vryburg, North West Province. Bloemfontein.

**Butler, E. 2015.** Palaeontological Impact Assessment of the proposed Orkney solar energy farm and associated infrastructure on the remaining extent of Portions 7 and 21 of the farm Wolvehuis 114, near Orkney, North West Province. Bloemfontein.

**Butler, E. 2015.** Palaeontological Impact Assessment of the proposed Spectra foods broiler houses and abattoir on the farm Maiden Manor 170 and Ashby Manor 171, Lukhanji Municipality, Queenstown, Eastern Cape Province. Bloemfontein.

**Butler, E. 2016.** Palaeontological Impact Assessment of the proposed construction of the 150 MW Noupoort concentrated solar power facility and associated infrastructure on portion 1 and 4 of the farm Carolus Poort 167 and the remainder of Farm 207, near Noupoort, Northern Cape. Prepared for Savannah Environmental. Bloemfontein.

**Butler, E. 2016.** Palaeontological Impact Assessment of the proposed Woodhouse 1 Photovoltaic Solar Energy facility and associated infrastructure on the farm Woodhouse 729, near Vryburg, North West Province. Bloemfontein.

**Butler, E. 2016.** Palaeontological Impact Assessment of the proposed Woodhouse 2 Photovoltaic Solar Energy facility and associated infrastructure on the farm Woodhouse 729, near Vryburg, North West Province. Bloemfontein.

**Butler, E. 2016.** Proposed 132kV overhead power line and switchyard station for the authorised Solis Power 1 CSP project near Upington, Northern Cape. Bloemfontein.

**Butler, E. 2016.** Palaeontological Impact Assessment of the proposed Senqu Pedestrian Bridges in Ward 5 of Senqu Local Municipality, Eastern Cape Province. Bloemfontein.

**Butler, E. 2016.** Recommendation from further Palaeontological Studies: Proposed Construction of the Modderfontein Filling Station on Erf 28 Portion 30, Founders Hill, City Of Johannesburg, Gauteng Province. Bloemfontein.

**Butler, E. 2016.** Recommendation from further Palaeontological Studies: Proposed Construction of the Modikwa Filling Station on a Portion of Portion 2 of Mooihoek 255 Kt, Greater Tubatse Local Municipality, Limpopo Province. Bloemfontein.

**Butler, E. 2016.** Recommendation from further Palaeontological Studies: Proposed Construction of the Heidedal filling station on Erf 16603, Heidedal Extension 24, Mangaung Local Municipality, Bloemfontein, Free State Province. Bloemfontein.

**Butler, E. 2016.** Recommended Exemption from further Palaeontological studies: Proposed Construction of the Gunstfontein Switching Station, 132kv Overhead Power Line (Single Or Double

Circuit) and ancillary infrastructure for the Gunstfontein Wind Farm Near Sutherland, Northern Cape Province. Bloemfontein.

**Butler, E. 2016.** Palaeontological Impact Assessment of the proposed Galla Hills Quarry on the remainder of the farm Roode Krantz 203, in the Lukhanji Municipality, division of Queenstown, Eastern Cape Province. Bloemfontein.

**Butler, E. 2016.** Chris Hani District Municipality Cluster 9 water backlog project phases 3a and 3b: Palaeontology inspection at Tsomo WTW. Bloemfontein.

**Butler, E. 2016.** Palaeontological Impact Assessment of the proposed construction of the 150 MW Noupoot concentrated solar power facility and associated infrastructure on portion 1 and 4 of the farm Carolus Poort 167 and the remainder of Farm 207, near Noupoot, Northern Cape. Savannah South Africa. Bloemfontein.

**Butler, E. 2016.** Palaeontological Impact Assessment of the proposed upgrading of the main road MR450 (R335) from the Motherwell to Addo within the Nelson Mandela Bay Municipality and Sunday's river valley Local Municipality, Eastern Cape Province. Bloemfontein.

**Butler, E. 2016.** Palaeontological Impact Assessment construction of the proposed Metals Industrial Cluster and associated infrastructure near Kuruman, Northern Cape province.. Bloemfontein.

**Butler, E. 2016.** Palaeontological Impact Assessment for the proposed construction of up to a 132kv power line and associated infrastructure for the proposed Kalkaar Solar Thermal Power Plant near Kimberley, Free State and Northern Cape Provinces. Bloemfontein.

**Butler, E. 2016.** Palaeontological Impact Assessment of the proposed development of two burrow pits (DR02625 and DR02614) in the Enoch Mgijima Municipality, Chris Hani District, Eastern Cape

**Butler, E. 2016.** Ezibeleni waste Buy-Back Centre (near Queenstown), Enoch Mgijima Local Municipality, Eastern Cape. Bloemfontein.



**Butler, E. 2016.** Palaeontological Impact Assessment for the proposed construction of two 5 Mw Solar Photovoltaic Power Plants on Farm Wildebeestkuil 59 and Farm Leeuwbosch 44, Leeudoringstad, North West Province. Bloemfontein.

**Butler, E. 2016.** Palaeontological Impact Assessment for the proposed development of four Leeuwerberg Wind farms and basic assessments for the associated grid connection near Loeriesfontein, Northern Cape Province. Bloemfontein.

**Butler, E. 2016.** Palaeontological impact assessment for the proposed Aggeneys south prospecting right project, Northern Cape Province. Bloemfontein.

**Butler, E. 2016.** Palaeontological impact assessment of the proposed Motuoane Ladysmith Exploration right application, KwaZulu Natal. Bloemfontein.

**Butler, E. 2016.** Palaeontological impact assessment for the proposed construction of two 5 MW solar photovoltaic power plants on farm Wildebeestkuil 59 and farm Leeuwbosch 44, Leeudoringstad, North West Province. Bloemfontein.

**Butler, E. 2016.:** Palaeontological desktop assessment of the establishment of the proposed residential and mixed use development on the remainder of portion 7 and portion 898 of the farm Knopjeslaagte 385 IR, located near Centurion within the Tshwane Metropolitan Municipality of Gauteng Province. Bloemfontein.

**Butler, E. 2017.** Palaeontological impact assessment for the proposed development of a new cemetery, near Kathu, Gamagara local municipality and John Taolo Gaetsewe district municipality, Northern Cape. Bloemfontein.

**Butler, E. 2017.** Palaeontological Impact Assessment Of The Proposed Development Of The New Open Cast Mining Operations On The Remaining Portions Of 6, 7, 8 And 10 Of The Farm Kwagafontein 8 In The Carolina Magisterial District, Mpumalanga Province. Bloemfontein.

**Butler, E. 2017.** Palaeontological Desktop Assessment for the Proposed Development of a Wastewater Treatment Works at Lanseria, Gauteng Province. Bloemfontein.

**Butler, E. 2017.** Palaeontological Scoping Report for the Proposed Construction of a Warehouse and Associated Infrastructure at Perseverance in Port Elizabeth, Eastern Cape Province.

**Butler, E. 2017.** Palaeontological Desktop Assessment for the Proposed Establishment of a Diesel Farm and a Haul Road for the Tshipi Borwa mine Near Hotazel, In the John Taolo Gaetsewe District Municipality in the Northern Cape Province. Bloemfontein.

**Butler, E. 2017.** Palaeontological Desktop Assessment for the Proposed Changes to Operations at the UMK Mine near Hotazel, In the John Taolo Gaetsewe District Municipality in the Northern Cape Province. Bloemfontein.

**Butler, E. 2017.** Palaeontological Impact Assessment for the Development of the Proposed Ventersburg Project-An Underground Mining Operation near Ventersburg and Henneman, Free State Province. Bloemfontein.

**Butler, E. 2017.** Palaeontological desktop assessment of the proposed development of a 3000 MW combined cycle gas turbine (CCGT) in Richards Bay, Kwazulu-Natal. Bloemfontein.

**Butler, E. 2017.** Palaeontological Impact Assessment for the Development of the Proposed Revalidation of the lapsed General Plans for Elliotdale, Mbhashe Local Municipality. Bloemfontein.

**Butler, E. 2017.** Palaeontological assessment of the proposed development of a 3000 MW Combined Cycle Gas Turbine (CCGT) in Richards Bay, Kwazulu-Natal. Bloemfontein.

**Butler, E. 2017.** Palaeontological Impact Assessment of the proposed development of the new open cast mining operations on the remaining portions of 6, 7, 8 and 10 of the farm Kwaggafontein 8 10 in the Albert Luthuli Local Municipality, Gert Sibande District Municipality, Mpumalanga Province. Bloemfontein.

**Butler, E. 2017.** Palaeontological Impact Assessment of the proposed mining of the farm Zandvoort 10 in the Albert Luthuli Local Municipality, Gert Sibande District Municipality, Mpumalanga Province. Bloemfontein.

**Butler, E. 2017.** Palaeontological Desktop Assessment for the proposed Lanseria outfall sewer pipeline in Johannesburg, Gauteng Province. Bloemfontein.

**Butler, E. 2017.** Palaeontological Desktop Assessment of the proposed development of open pit mining at Pit 36W (New Pit) and 62E (Dishaba) Amandelbult Mine Complex, Thabazimbi, Limpopo Province. Bloemfontein.

**Butler, E. 2017.** Palaeontological impact assessment of the proposed development of the sport precinct and associated infrastructure at Merrifield Preparatory school and college, Amathole Municipality, East London. Bloemfontein.

**Butler, E. 2017.** Palaeontological impact assessment of the proposed construction of the Lehae training and fire station, Lenasia, Gauteng Province. Bloemfontein.

**Butler, E. 2017.** Palaeontological Desktop Assessment of the proposed development of the new open cast mining operations of the Impunzi mine in the Mpumalanga Province. Bloemfontein.

**Butler, E. 2017.** Palaeontological Desktop Assessment of the construction of the proposed Viljoenskroon Munic 132 KV line, Vierfontein substation and related projects. Bloemfontein.

**Butler, E. 2017.** Palaeontological Desktop Assessment of the proposed rehabilitation of 5 ownerless asbestos mines. Bloemfontein.

**Butler, E. 2017.** Palaeontological Desktop Assessment of the proposed development of the Lephale coal and power project, Lephale, Limpopo Province, Republic of South Africa. Bloemfontein.

**Butler, E. 2017.** Palaeontological Impact Assessment of the proposed construction of a 132KV powerline from the Tweespruit distribution substation (in the Mantsopa local municipality) to the Driedorp rural substation (within the Naledi local municipality), Free State province. Bloemfontein.

**Butler, E. 2017.** Palaeontological Desktop Assessment of the proposed development of the new coal-fired power plant and associated infrastructure near Makhado, Limpopo Province. Bloemfontein.

**Butler, E. 2017.** Palaeontological Impact Assessment of the proposed construction of a Photovoltaic Solar Power station near Collett substation, Middelberg, Eastern Cape. Bloemfontein.

**Butler, E. 2017.** Palaeontological Impact Assessment for the proposed township establishment of 2000 residential sites with supporting amenities on a portion of farm 826 in Botshabelo West, Mangaung Metro, Free State Province. Bloemfontein.

**Butler, E. 2017.** Palaeontological Desktop Assessment for the proposed prospecting right project without bulk sampling, in the Koa Valley, Northern Cape Province. Bloemfontein.

**Butler, E. 2017.** Palaeontological Desktop Assessment for the proposed Aroams prospecting right project, without bulk sampling, near Aggeneys, Northern Cape Province. Bloemfontein.

**Butler, E. 2017.** Palaeontological Impact Assessment of the proposed Belvior aggregate quarry II on portion 7 of the farm Maidenhead 169, Enoch Mgijima Municipality, division of Queenstown, Eastern Cape. Bloemfontein.

**Butler, E. 2017.** PIA site visit and report of the proposed Galla Hills Quarry on the remainder of the farm Roode Krantz 203, in the Lukhanji Municipality, division of Queenstown, Eastern Cape Province. Bloemfontein.

**Butler, E. 2017.** Palaeontological Impact Assessment of the proposed construction of Tina Falls Hydropower and associated power lines near Cumbu, Mthlontlo Local Municipality, Eastern Cape. Bloemfontein.

**Butler, E. 2017.** Palaeontological Desktop Assessment of the proposed construction of the Mangaung Gariep Water Augmentation Project. Bloemfontein.

**Butler, E. 2017.** Palaeontological Impact Assessment of the proposed Belvoir aggregate quarry II on portion 7 of the farm Maidenhead 169, Enoch Mgijima Municipality, division of Queenstown, Eastern Cape. Bloemfontein.

**Butler, E. 2017.** Palaeontological Impact Assessment of the proposed construction of the Melkspruit-Rouxville 132KV Power line. Bloemfontein.

**Butler, E. 2017** Palaeontological Desktop Assessment of the proposed development of a railway siding on a portion of portion 41 of the farm Rustfontein 109 is, Govan Mbeki local municipality, Gert Sibande district municipality, Mpumalanga Province. Bloemfontein.

**Butler, E. 2017.** Palaeontological Impact Assessment of the proposed consolidation of the proposed Ilima Colliery in the Albert Luthuli local municipality, Gert Sibande District Municipality, Mpumalanga Province. Bloemfontein.

**Butler, E. 2017.** Palaeontological Desktop Assessment of the proposed extension of the Kareerand Tailings Storage Facility, associated borrow pits as well as a storm water drainage channel in the Vaal River near Stilfontein, North West Province. Bloemfontein.

**Butler, E. 2017.** Palaeontological Desktop Assessment of the proposed construction of a filling station and associated facilities on the Erf 6279, district municipality of John Taolo Gaetsewe District, Ga-Segonyana Local Municipality Northern Cape. Bloemfontein.

**Butler, E. 2017.** Palaeontological Desktop Assessment of the proposed of the Lephalale Coal and Power Project, Lephalale, Limpopo Province, Republic of South Africa. Bloemfontein.

**Butler, E. 2017.** Palaeontological Desktop Assessment of the proposed Overvaal Trust PV Facility, Buffelspoort, North West Province. Bloemfontein.

**Butler, E. 2017.** Palaeontological Impact Assessment of the proposed development of the H2 Energy Power Station and associated infrastructure on Portions 21; 22 And 23 of the farm Hartebeestspruit in the Thembisile Hani Local Municipality, Nkangala District near Kwamhlanga, Mpumalanga Province. Bloemfontein.

**Butler, E. 2017.** Palaeontological Impact Assessment of the proposed upgrade of the Sandriver Canal and Klippan Pump station in Welkom, Free State Province. Bloemfontein.

**Butler, E. 2017.** Palaeontological Impact Assessment of the proposed upgrade of the 132kv and 11kv power line into a dual circuit above ground power line feeding into the Urania substation in Welkom, Free State Province. Bloemfontein.

**Butler, E. 2017.** Palaeontological Desktop Assessment of the proposed Swaziland-Mozambique border patrol road and Mozambique barrier structure. Bloemfontein.

**Butler, E. 2017.** Palaeontological Impact Assessment of the proposed diamonds alluvial & diamonds general prospecting right application near Christiana on the remaining extent of portion 1 of the farm Kaffraria 314, registration division HO, North West Province. Bloemfontein.

**Butler, E. 2017.** Palaeontological Desktop Assessment for the proposed development of Wastewater Treatment Works on Hartebeesfontein, near Panbult, Mpumalanga. Bloemfontein.

**Butler, E. 2017.** Palaeontological Desktop Assessment for the proposed development of Wastewater Treatment Works on Rustplaas near Piet Retief, Mpumalanga. Bloemfontein.

**Butler, E. 2018.** Palaeontological Impact Assessment for the Proposed Landfill Site in Luckhoff, Letsemeng Local Municipality, Xhariep District, Free State. Bloemfontein.

**Butler, E. 2018.** Palaeontological Impact Assessment of the proposed development of the new Mutsho coal-fired power plant and associated infrastructure near Makhado, Limpopo Province. Bloemfontein.

**Butler, E. 2018.** Palaeontological Impact Assessment of the authorisation and amendment processes for Manangu mine near Delmas, Victor Khanye local municipality, Mpumalanga. Bloemfontein.

**Butler, E. 2018.** Palaeontological Desktop Assessment for the proposed Mashishing township establishment in Mashishing (Lydenburg), Mpumalanga Province. Bloemfontein.

**Butler, E. 2018.** Palaeontological Desktop Assessment for the Proposed Mlonzi Estate Development near Lusikisiki, Ngquza Hill Local Municipality, Eastern Cape. Bloemfontein.

**Butler, E. 2018.** Palaeontological Phase 1 Assessment of the proposed Swaziland-Mozambique border patrol road and Mozambique barrier structure. Bloemfontein.

**Butler, E. 2018.** Palaeontological Desktop Assessment for the proposed electricity expansion project and Sekgame Switching Station at the Sishen Mine, Northern Cape Province. Bloemfontein.

**Butler, E. 2018.** Palaeontological field assessment of the proposed construction of the Zonnebloem Switching Station (132/22kV) and two loop-in loop-out power lines (132kV) in the Mpumalanga Province. Bloemfontein.

**Butler, E. 2018.** Palaeontological Field Assessment for the proposed re-alignment and decommissioning of the Firham-Platrand 88kv Powerline, near Standerton, Lekwa Local Municipality, Mpumalanga province. Bloemfontein.

**Butler, E. 2018.** Palaeontological Desktop Assessment of the proposed Villa Rosa development In the Buffalo City Metropolitan Municipality, East London. Bloemfontein.

**Butler, E. 2018.** Palaeontological field Assessment of the proposed Villa Rosa development In the Buffalo City Metropolitan Municipality, East London. Bloemfontein.

**Butler, E. 2018.** Palaeontological desktop assessment of the proposed Mookodi – Mahikeng 400kV line, North West Province. Bloemfontein.

**Butler, E. 2018.** Palaeontological Desktop Assessment for the proposed Thornhill Housing Project, Ndlambe Municipality, Port Alfred, Eastern Cape Province. Bloemfontein.

**Butler, E. 2018.** Palaeontological desktop assessment of the proposed housing development on portion 237 of farm Hartebeestpoort 328. Bloemfontein.



**Butler, E. 2018.** Palaeontological desktop assessment of the proposed New Age Chicken layer facility located on holding 75 Endicott near Springs in Gauteng. Bloemfontein.

**Butler, E. 2018** Palaeontological Desktop Assessment for the development of the proposed Leslie 1 Mining Project near Leandra, Mpumalanga Province. Bloemfontein.

**Butler, E. 2018.** Palaeontological field assessment of the proposed development of the Wilealskloof mixed use development near Bloemfontein, Free State Province. Bloemfontein.

**Butler, E. 2018.** Palaeontological Field Assessment of the proposed Megamor Extension, East London. Bloemfontein.

**Butler, E. 2018.** Palaeontological Impact Assessment of the proposed diamonds Alluvial & Diamonds General Prospecting Right Application near Christiana on the Remaining Extent of Portion 1 of the Farm Kaffraria 314, Registration Division HO, North West Province. Bloemfontein.