

Prospecting Right for Copper, Iron Ore and Manganese Mining Process

Siyathemba Local Municipality, Hay District Municipality, Northern Cape Province

Farm: Portion 1, 2, 3 and Remaining Extent Bultfontein 327-HS, Remaining Extent and Portion 1 Janplaats 328-HS, Remaining Extent and Portion 1 Swartpan 329-HS,

Fourie, H. Dr

***Palaeontological Impact Assessment: Desktop Study***

Facilitated by: Nyamoki Consulting (Pty) Ltd

1850 Berg Avenue, Doreg AH,

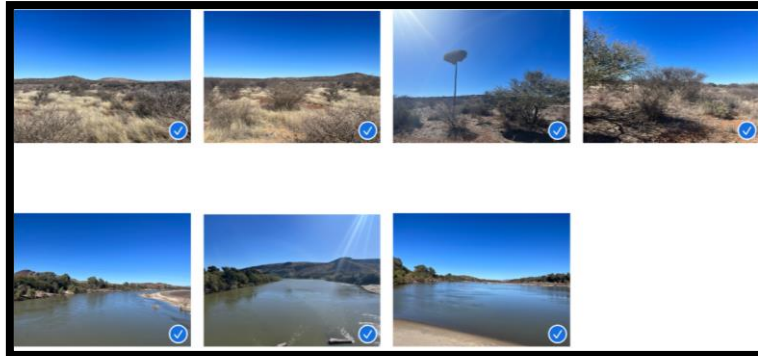
Akasia, 0182

Tel: 076 327 1827

2023/09/01

Ref: DMRE NC 30/5/1/2/2/13555 PR

***Views of site (Lutendo)***



## B. Executive summary

Outline of the development project: Nyamoki Consulting appointed Dr H. Fourie, a palaeontologist, to undertake a Palaeontological Impact Assessment (PIA), Desktop Study of the Prospecting Right for Copper, Iron Ore and Manganese Mining Process in the Siyathemba Local Municipality, Hay District Municipality, Northern Cape Province on Farm: Portion 1, 2, 3 and Remaining Extent Bultfontein 327-HS, Remaining Extent and Portion 1 Janplaats 328-HS, Remaining Extent and Portion 1 Swaartpan 329-HS.

The applicant, X intends to prospect for copper, iron ore and manganese by drilling holes.

The Project includes one locality Alternative (see Figure 2):

Alternative 1: A polygonal area outlined in red with the N10 National Road and Marydale west; R383 Road north, 40 km northwest of Prieska, and the Orange River directly south. The approximate size of the site is 11 192 hectares.

### Legal requirements:-

The **National Heritage Resources Act (Act No. 25 of 1999) (NHRA)** requires that all heritage resources, that is, all places or objects of aesthetic, architectural, historical, scientific, social, spiritual, linguistic or technological value or significance are protected. The Republic of South Africa (RSA) has a remarkably rich fossil record that stretches back in time for some 3.5 billion years and must be protected for its scientific value. Fossil heritage of national and international significance is found within all provinces of the RSA. South Africa's unique and non-renewable palaeontological heritage is protected in terms of the National Heritage Resources Act. According to this act, palaeontological resources may not be excavated, damaged, destroyed or otherwise impacted by any development without prior assessment and without a permit from the relevant heritage resources authority.

The main aim of the assessment process is to document resources in the development area and identify both the negative and positive impacts that the development brings to the receiving environment. The PIA therefore identifies palaeontological resources in the area to be developed and makes recommendations for protection or mitigation of these resources.

“palaeontological” means any fossilised remains or fossil trace of animals or plants which lived in the geological past, other than fossil fuels or fossiliferous rock intended for industrial use, and any site which contains such fossilised remains or traces.

For this study, resources such as geological maps, scientific literature, institutional fossil collections, satellite images, aerial maps and topographical maps were used. It provides an assessment of the observed or inferred palaeontological heritage within the study area, with recommendations (if any) for further specialist palaeontological input where this is considered necessary.

A Palaeontological Impact Assessment is generally warranted where rock units of **LOW** to **VERY HIGH** palaeontological sensitivity are concerned, levels of bedrock exposure within the study area are adequate; large scale projects with high potential heritage impact are planned; and where the distribution and nature of fossil remains in the proposed area is unknown. The specialist will inform whether further monitoring and mitigation are necessary.

Types and ranges of heritage resources as outlined in Section 3 of the National Heritage Resources Act (Act No.25 of 1999):

(i) objects recovered from the soil or waters of South Africa, including archaeological and palaeontological objects and material, meteorites and rare geological specimens.

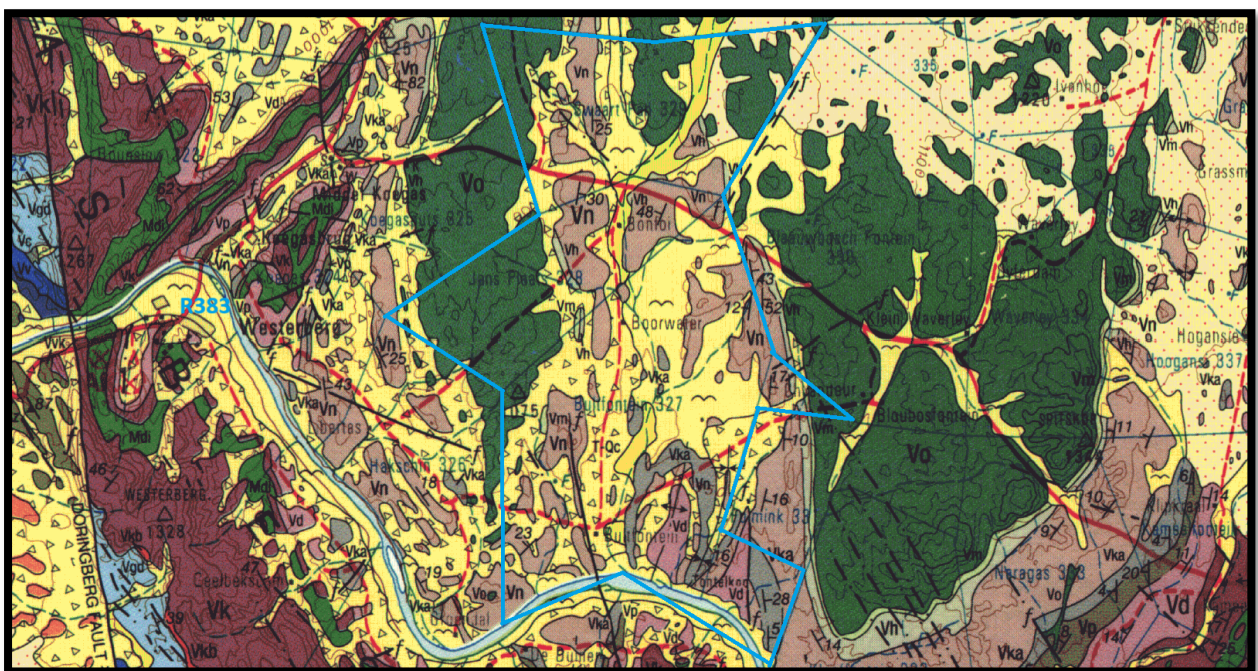
This report adheres to the guidelines of Section 38 (1) of the National Heritage Resources Act (Act No. 25 of 1999).

Subject to the provisions of subsections (7), (8) and (9), any person who intends to undertake a development categorised as (a) the construction of a road, wall, power line, pipeline, canal or other similar form of linear development or barrier exceeding 300 m in length; (b) the construction of a bridge or similar structure exceeding 50 m in length; (c) any development or other activity which will change the character of a site (see Section 38); (d) the re-zoning of a site exceeding 10 000 m<sup>2</sup> (1 ha) in extent; (e) or any other category of development provided for in regulations by SAHRA or a PHRA authority.

This report aims (1c) to provide comment and recommendations on the potential impacts that the proposed development could have on the fossil heritage of the area and to state if any mitigation or conservation measures are necessary.

Outline of the geology and the palaeontology:

The geology was obtained from map 1:100 000, Geology of the Republic of South Africa (Visser 1984) and the 1:250 000 geological map of Prieska 2922 (Malherbe and Moen 1996).



**Figure:** The geology of the development area.

*Legend to Figure and short explanation.*

ΔΔ - Scree, surface rubble (beige). Quaternary.

m – Alluvium (yellow). Quaternary.

Vo – Amygdaloidal andesite/basalt with interbeds of tuff and agglomerate; interbedded diamictite in places at base. Chert and red jasper (green). Ongeluk Formation, Transvaal Supergroup. Vaalian.

Vn – Shale, siltstone, subordinate lenses of sandstone, riebecitic jaspilite with dolomite, brown jaspilite, chert and manganiferous sideritic lenses at top (pink). Naragas Formation, Koegas Subgroup, Ghaap Group, Transvaal Supergroup. Vaalian.

Vka – Riebecitic jaspilite, brown jaspilite, chert. Conglomerate of the Doradale Formation at base (grey). Kameelfontein Formation, Koegas Subgroup, Ghaap Group, Transvaal Supergroup. Vaalian.

Vd – Blue riebecitic jaspilite, subordinate brown jaspilite, chert; brown jaspilite, subordinate riebecitic jaspilite (dark pink). Daniëlskuil Formation, Asbestos Hills Subgroup, Ghaap Group, Transvaal Supergroup. Vaalian.

---f--- – (black) Fault.

..... – Undifferentiated linear structure.

----- - Concealed geological boundary.

└16° - Strike and dip.

□ – Approximate position of prospecting (in blue on figure).

Summary of findings: The Palaeontological Impact Assessment: Desktop Study was undertaken in August 2023 in winter in cold conditions (Appendix 6 of Act, 1(d)). As this is a desktop study, the season and time has no influence on the outcome. The following is reported:

Over areas totalling fully 40% of Southern Africa the 'hard rocks', from the oldest to the Quaternary, are concealed by normally unconformable deposits – principally sand, gravel, sandstone, and limestone. Inland deposits are much more extensive than marine deposits and are terrestrial and usually non-fossiliferous. Some of these deposits date back well into the Tertiary, whereas others are still accumulating. Owing to the all-to-often lack of fossils and of rocks suitable for radiometric or palaeomagnetic dating, no clear-cut dividing line between the Tertiary and Quaternary successions could be established (Kent 1980). The alluvium sands were deposited by a river system and reworked by wind action (Snyman 1996). A thick cover of Kalahari reddish sand blankets most outcrops and is dominated by the typical Kalahari thornveld (Norman and Whitfield 2006).

The Griqualand West Basin consists mainly of sediments of chemical origin together with lavas and subordinate clastic sediments. The basal unit, the Vryburg Formation lies unconformably on the granite and rocks of the Ventersdorp Supergroup. It is followed by the Campbell Group which consists of the Schmidtsdrif Formation and the upper Ghaap Plateau Formation (Visser 1989). There are also two formations in the Griquatown Group, namely, the Asbestos Hills and Koegas Formations. The Gamagara Formation follows and is located on the Maremane Anticline, it is overlain by the Makganyene Formation. The Cox Group consists of the lower Ongeluk Formation and the upper Voëlwater Formation. It attains a maximum thickness of 4500 m (Kent 1980, Snyman 1996). Almond and Pether (2009) referred to this as the Griqualand Basin within the Transvaal Supergroup.

*Palaeontology* - Fossils in South Africa mainly occur in rocks of sedimentary nature and not in rocks from igneous or metamorphic nature. Therefore, the palaeontological sensitivity can generally be **VERY LOW** to **VERY HIGH**, and here in the development **HIGH** for the Quaternary and **MODERATE** for the Transvaal Supergroup (SG 2.2 SAHRA APMHOB, 2012) (Almond and Pether 2009).

The Quaternary Formation may contain fossils. A wide range of possible fossil remains, though these are often sparse, such as: mammalian bones and teeth, tortoise remains, ostrich eggshells, non-marine mollusc shells, ostracods, diatoms, and other micro fossil groups, trace fossils (e.g. calcretised termitaria, rhizoliths, burrows, vertebrate tracks), freshwater stromatolites, plant material such as peats, foliage, wood, pollens, within calc tufa. Stromatolite structures range from a centimetre to several tens of metres in size (Groenewald and Groenewald 2014).

The Ghaap Plateau is known for stromatolites and cyanobacterial microfossils. Very large stromatolites have been described from the Campbell Subgroup of the Ghaap Group (Groenewald and Groenewald 2014). Almond and Pether (2009) described a range of shallow marine and lacustrine stromatolites, oölites, pisolites in carbonates, filamentous and coccoid organic walled microfossils in siliciclastic / carbonates as well as cherts of banded iron form. Stromatolites are present in the Campbell Rand Subgroup of the Ghaap Group in the North West Province. They provide evidence of algal growth between 2 640 and 2 432 million years ago (Groenewald and Groenewald 2014).

Recommendation:

Concerns/threats to be added to the EMPr (1k,l,m):

1. The overburden and inter-burden must always be surveyed for fossils. Special care must be taken during the clearing, digging, drilling, and excavating of foundations, trenches, channels or footings and removal of overburden if applicable not to intrude fossiliferous layers.
2. Threats are earth moving equipment/machinery (front end loaders, excavators, graders, dozers) during construction, the sealing-in, disturbance, damage or destruction of the fossils by development, vehicle traffic, mining, prospecting, and human disturbance.

The recommendations are (1g):

1. The impact of the prospecting on the fossil heritage is **HIGH** and **MODERATE**. A Phase 1 Palaeontological Impact Assessment: Field Study may be recommended if fossils are found during excavating, trenching, drilling, or clearing (according to SAHRA protocol).
2. Mitigation is needed if fossils are found, permission needed from SAHRA.
3. No consultation with parties was necessary.
4. The development may go ahead with caution, but the ECO together with the mine geologist must survey the prospecting area for fossils after drilling or trenching, material must be scrutinised as well, in line with the legally binding Environmental Management Programme (EMPr) this must be updated to include the involvement of a palaeontologist/ archaeozoologist when necessary.
5. The EMPr will cover the conservation of heritage and palaeontological material that may be exposed during prospecting activities. The protocol is to immediately cease all prospecting activities if a fossil is unearthed, construct a 30 m no-go barrier, and contact SAHRA for further investigation.

Stakeholders: Developer – Not known.

Environmental – Nyamoki Consulting (Pty) Ltd. 1850 Berg Avenue, Doreg AH, Akasia, 0182. Tel: 076 327 1827.

Landowners – Not available.

## **C. Table of Contents**

A. Title page	1
B. Executive Summary	2
C. Table of Contents	5
D. Background Information on the project	5
E. Description of the Property or Affected Environment	7
F. Description of the Geological Setting	8
G. Background to Palaeontology of the area	11
H. Description of the Methodology	13
I. Description of significant fossil occurrences	15
J. Recommendation	15
K. Conclusions	16
L. Bibliography	17
Declaration	18
Appendix 1: Examples of Quaternary age fossils	19
Appendix 2: Table (Appendix 6 of Act)	19
Appendix 3: Management Plan and Protocol for Chance Finds	20
Appendix 4: Impact Statement	22

## **D. Background information on the project**

## Report

This report is part of the environmental impact assessment process under the National Environmental Management Act, as amended (Act No. 107 of 1998) (NEMA) and includes Appendix 6 (GN R38282 of 4 December 2014) of the Environmental Impact Assessment Regulations (see Appendix 1 bold in text). It is also in compliance with SG 2.2 SAHRA APMHOB Guidelines, 2012. Minimum standards for palaeontological components of Heritage Impact Assessment Reports, Pp 1-15 (2).

## Outline of development

This report discusses and aims to provide the developer with information regarding the location of palaeontological material that will be impacted by the development. Depending on the presence or absence of fossils in the pre-construction phase it may be necessary for the developer to apply for the relevant permit from the South African Heritage Resources Agency (SAHRA / PHRA).

The applicant, X intends to prospect for copper, iron ore and manganese by drilling holes. Diamond mineral exploration is excluded from Bultfontein, Swartpan. The prospecting and evaluation activities are planned for two years.

Local benefits of the proposed development include benefits to the local economy, create local employment and ease poverty.

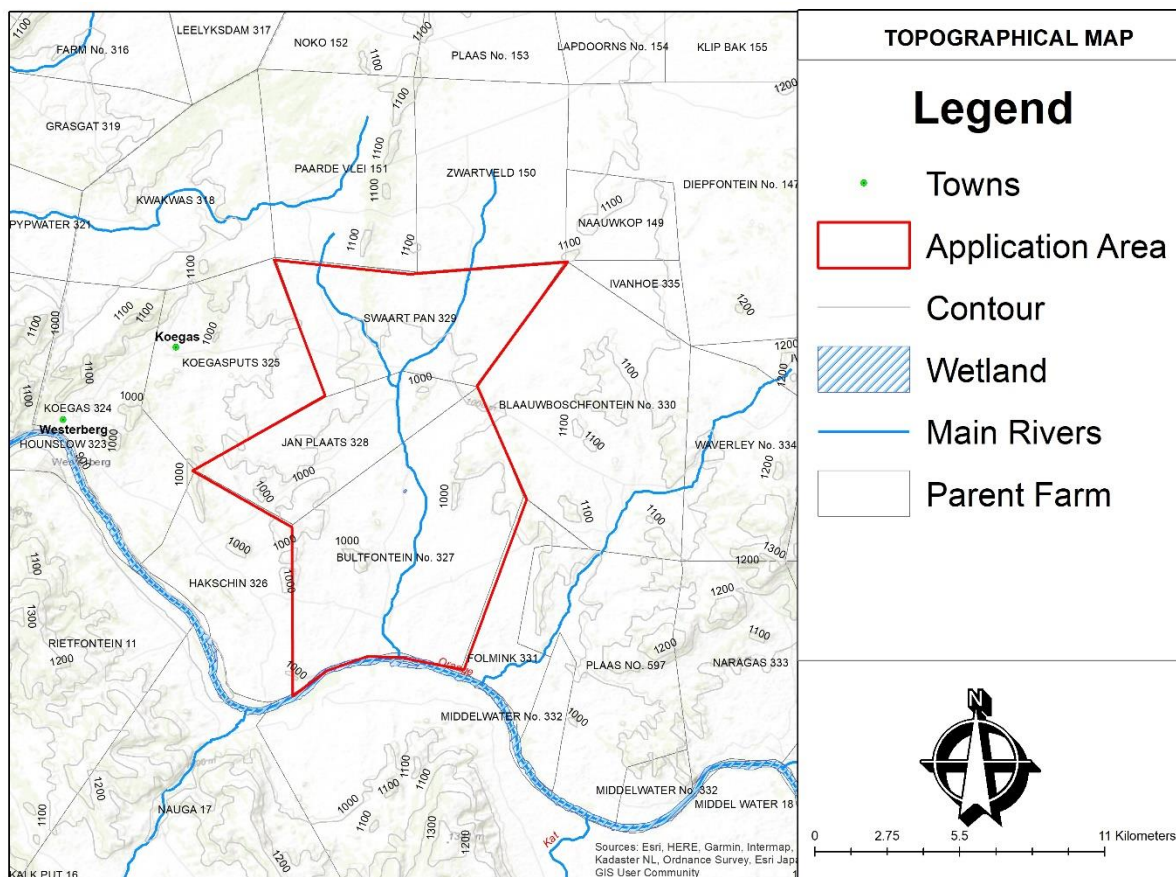


Figure 1: Topographic figure showing location (Nyamoki).

The following infrastructure is anticipated:

- Roads to be cleared
- Temporary Office

- Potable water and power
- Ablution facilities
- Crushing plant

The Project includes one locality Alternative (see Figure 2):

Alternative 1: A polygonal area outlined in red with the N10 National Road and Marydale west; R383 Road north, 40 km northwest of Prieska, and the Orange River directly south. The approximate size of the site is 12468 hectares.

Rezoning/ and or subdivision of land: Not needed.

Name of Developer and Consultant: Not known and Nyamoki Consulting (Pty) Ltd.

Terms of reference: Dr H. Fourie is a palaeontologist commissioned to do a palaeontological impact assessment to ascertain if any palaeontological sensitive material is present in the development area. This study will advise on the impact on fossil heritage mitigation or conservation necessary, if any.

Short Curriculum vitae (1ai,ii): Dr Fourie obtained a Ph.D from the Bernard Price Institute for Palaeontological Research (now ESI), University of the Witwatersrand. Her undergraduate degree is in Geology and Zoology. She specialises in vertebrate morphology and function concentrating on the Therapsid Therocephalia. For the past 17 years she carried out field work in the Eastern Cape, Limpopo, Mpumalanga, Gauteng, Free State and Kwazulu Natal Provinces. Dr Fourie has been employed at the Ditsong: National Museum of Natural History in Pretoria (formerly Transvaal Museum) for 29 years.

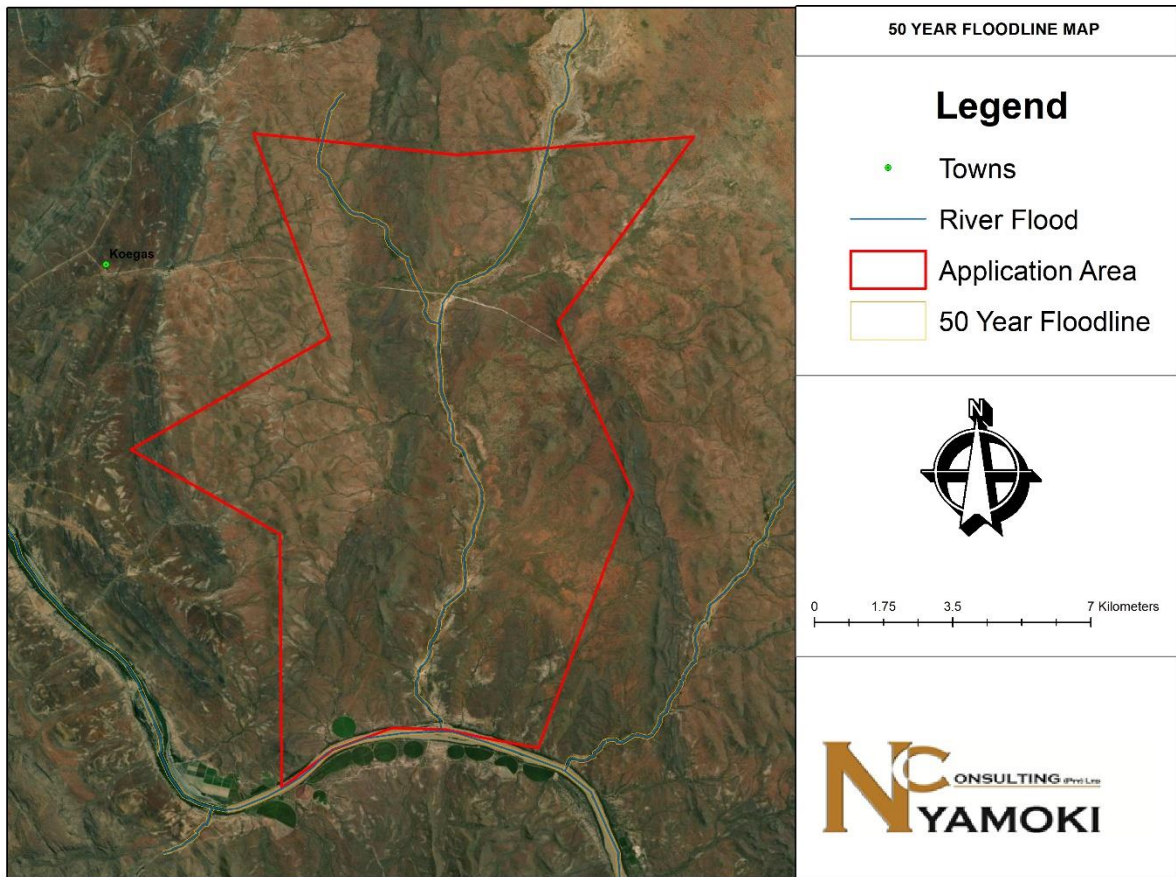
Legislative requirements: South African Heritage Resources Agency (SAHRA) for issue of permits if necessary. National Heritage Resources Act (Act No. 25 of 1999). An electronic copy of this report must be supplied to SAHRA.

## **E. Description of property or affected environment**

### Location and depth:

The Prospecting Right for Copper, Iron Ore and Diamond Mining Process will be situated in the Siyathemba Local Municipality, Hay District Municipality, Northern Cape Province on Farm: Portion 1, 2, 3 and Remaining Extent Bultfontein 327-HS, Remaining Extent and Portion 1 Janplaats 328-HS, Remaining Extent and Portion 1 Swartpan 329-HS, Remaining Extent and Portion 1 Folmink 331-HS.

Depth is determined by the related infrastructure, such as the foundations to be developed and the thickness of the formation. Details of the location and distribution of all significant fossil sites or key fossiliferous rock units are often difficult to determine due to thick topsoil, subsoil, overburden and alluvium. Depth of the overburden may vary a lot. Geological maps do not provide depth or superficial cover, it only provides mappable surface outcrops.



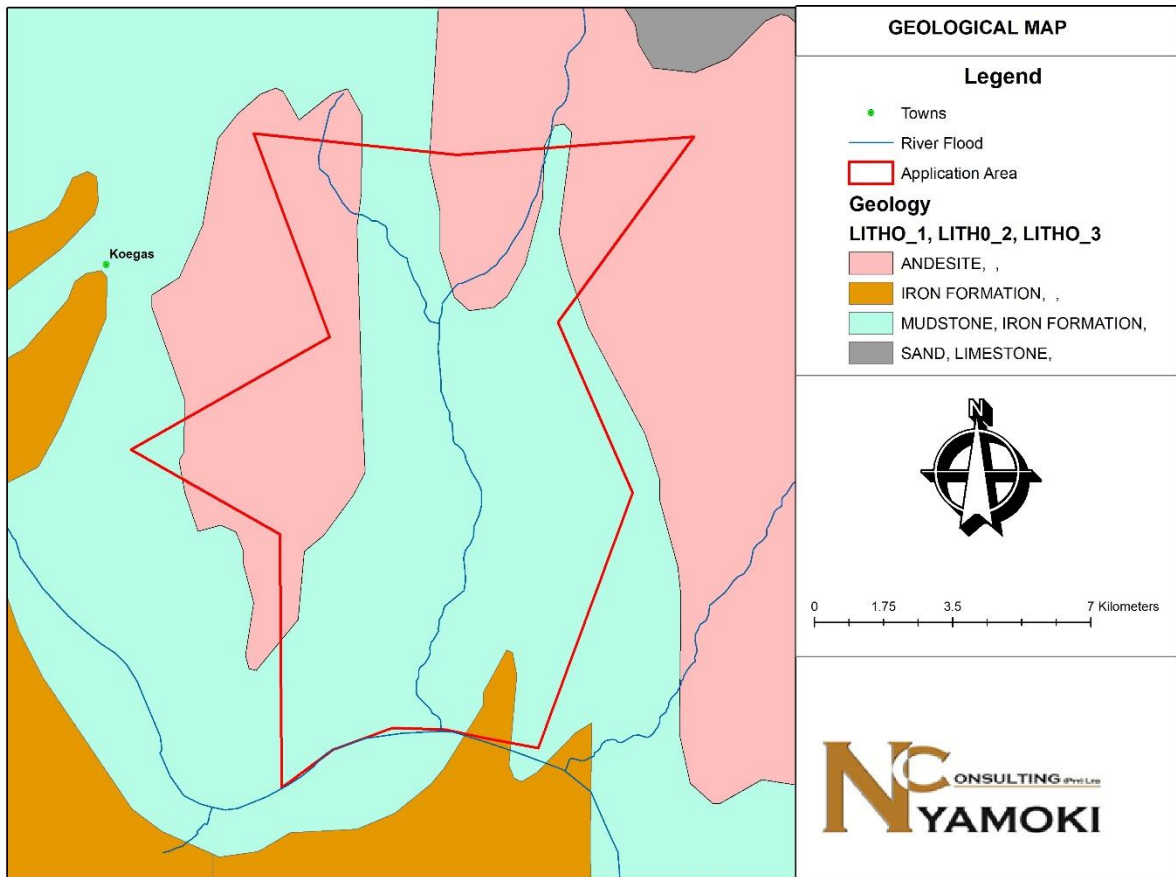
**Figure 2:** Google Earth location map (Nyamoki).

## **F. Description of the Geological Setting**

### Description of the rock units:

Over areas totalling fully 40% of Southern Africa the 'hard rocks', from the oldest to the Quaternary, are concealed by normally unconformable deposits – principally sand, gravel, sandstone, and limestone. Inland deposits are much more extensive than marine deposits and are terrestrial and usually non-fossiliferous. Some of these deposits date back well into the Tertiary, whereas others are still accumulating. Owing to the all-to-often lack of fossils and of rocks suitable for radiometric or palaeomagnetic dating, no clear-cut dividing line between the Tertiary and Quaternary successions could be established (Kent 1980). The alluvium sands were deposited by a river system and reworked by wind action (Snyman 1996). A thick cover of Kalahari reddish sand blankets most outcrops and is dominated by the typical Kalahari thornveld (Norman and Whitfield 2006).





**Figure 3: Geology of the area (Malherbe and Moen 1996) (1h).**

*Legend to Figure and short explanation.*

ΔΔ - Scree, surface rubble (green). Quaternary.

m – Alluvium (green). Quaternary.

Vo – Amygdaloidal andesite/basalt with interbeds of tuff and agglomerate; interbedded diamictite in places at base. Chert and red jasper (amber). Ongeluk Formation, Transvaal Supergroup. Vaalian.

Vn – Shale, siltstone, subordinate lenses of sandstone, riebecitic jaspilite with dolomite, brown jaspilite, chert and manganeseiferous seditic lenses at top (pink). Naragas Formation, Koegas Subgroup, Ghaap Group, Transvaal Supergroup. Vaalian.

Vka – Riebecitic jaspilite, brown jaspilite, chert. Conglomerate of the Doradale Formation at base (grey). Kameelfontein Formation, Koegas Subgroup, Ghaap Group, Transvaal Supergroup. Vaalian.

Vd – Blue riebecitic jaspilite, subordinate brown jaspilite, chert; brown jaspilite, subordinate riebecitic jaspilite (dark pink). Daniëlskuil Formation, Asbestos Hills Subgroup, Ghaap Group, Transvaal Supergroup. Vaalian.

---f--- – (black) Fault.

..... – Undifferentiated linear structure.

---- - Concealed geological boundary.

⊥16° - Strike and dip.

□ – Approximate position of prospecting (in red on figure).

Mining Activities in study area on Figure above

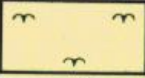
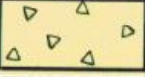

None shown on this Figure.

The mining past and present will have an influence on this development.

The Griqualand West Basin consists mainly of sediments of chemical origin together with lavas and subordinate clastic sediments. The basal unit, the Vryburg Formation lies unconformably on the granite and rocks of the Ventersdorp Supergroup. It is followed by the Campbell Group which consists of the Schmidtsdrif Formation and the upper Ghaap Plateau Formation (Visser 1989). There are also two formations in the Griquatown Group, namely, the Asbestos Hills and Koegas Formations. The Gamagara Formation follows and is located on the Maremane Anticline, it is overlain by the Makganyene Formation. The Cox Group consists of the lower Ongeluk Formation and the upper Voëlwater Formation. It attains a maximum thickness of 4500 m (Kent 1980, Snyman 1996). Almond and Pether (2009) referred to this as the Griqualand Basin within the Transvaal Supergroup.

The Vryburg Formation constitutes the lowermost formation of the Griqualand West basin / Supergroup. It unconformably overlies pre-Griqualand West rocks, and is conformably overlain by the Schmidtsdrif Formation. An age of  $2300 \pm 50$  Ma was obtained. It consists essentially of quartzitic sandstone, mudrock and siltstone, with andesitic/basaltic lava present in places. This formation is not thicker than 900 m and often covered with Karoo Supergroup and Kalahari Group sediments. It is correlated with the Black Reef Series in the Transvaal Supergroup (Smit, *et al.* 1991). Smit *et al.* (1991) recognised five members, the Kalkput Quartzite, Geelbeksdam, Rosendal, Waterloo and Oceola.

Groenewald and Groenewald (2014) placed the Ghaap Plateau as a Group in the Transvaal Supergroup with the Campbell Group as a Subgroup. The Ghaap Plateau was deposited as a thick layer of carbonaceous sediments in extensive shallow basins. It consists of carbonates, siliclastics and iron formations. The age is Late Archaean, Early Proterozoic. The Schmidtsdrif Formation forms the lower part of the Campbell Group and is divided into three members. The members are each approximately 10 m thick. Stromatolites are present in the upper member. Stromatolites occur in the dolomite of the Ghaap Plateau Formation. The Ghaap Plateau Formation is followed by the Asbestos Hills Formation (Sheet 2722 info). The Ghaap Plateau dolomites correlate with the Chuniespoort Group dolomites (McCarthy and Rubidge 2005).

TERSIËR TOT KWATERNÊR TERTIARY TO QUATERNARY	Qs	Rooi tot vleeskleurige waaisand; sandduin ( ) Red to flesh-coloured wind-blown sand; sand dune ( )
		Alluvium Alluvium
		Verweringspuin Rubble
		Rivierterrasgruis River-terrace gravel

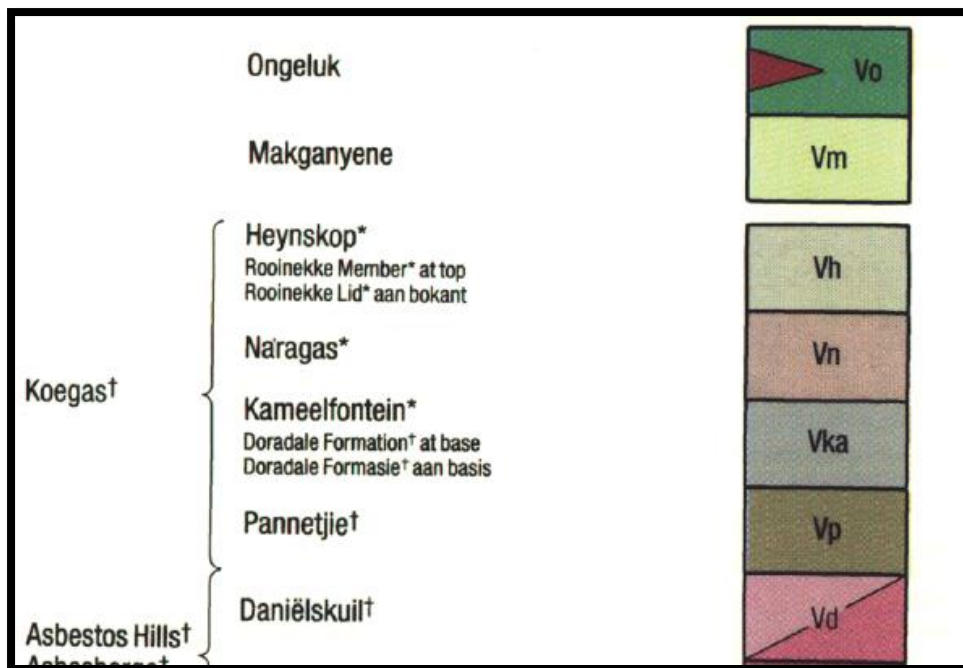


Figure 5: Lithology (Moen 1977).

### G. Background to Palaeontology of the area

Summary: When rock units of moderate to very high palaeontological sensitivity are present within the development footprint, a desk top and or field scoping (survey) study by a professional palaeontologist is usually warranted. The main purpose of a field scoping (survey) study would be to identify any areas within the development footprint where specialist palaeontological mitigation during the construction phase may be required (SG 2.2 SAHRA AMPHOB, 2012).

The Quaternary Formation to Holocene may contain fossils. A very wide range of possible fossil remains, though these are often sparse, such as: mammalian bones and teeth, tortoise remains, ostrich eggshells, non-marine mollusc shells, ostracods, diatoms, and other micro fossil groups, trace fossils (e.g. calcretised termitaria, rhizoliths, burrows, vertebrate tracks), freshwater stromatolites, plant material such as peats, foliage, wood, pollens, within calc tufa. Stromatolite structures range from a centimetre to several tens of metres in size (Groenewald and Groenewald 2014).



**Figure 5:** Example of a Stromatolite (Photograph: E. Butler).

The more recent Phanerozoic deposits (Cenozoic) are of importance in the study of life during the last 300 million years. Large areas in the western part of the Northern Cape Province are underlain by Cenozoic (Tertiary, Quaternary) deposits of the Kalahari Group.

The Ghaap Plateau is known for stromatolites and cyanobacterial microfossils. Very large stromatolites have been described from the Campbell Subgroup of the Ghaap Group (Groenewald and Groenewald 2014). Almond and Pether (2009) described a range of shallow marine and lacustrine stromatolites, oolites, pisolites in carbonates, filamentous and coccoid organic walled microfossils in siliciclastic / carbonates as well as cherts of banded iron form. Stromatolites are present in the Campbell Rand Subgroup of the Ghaap Group in the North West Province. They provide evidence of algal growth between 2 640 and 2 432 million years ago (Groenewald and Groenewald 2014).

**Table 1:** Taken from Palaeotechnical Report (Almond and Pether 2009) (1cA, 1cB).

<p><b>15. FLUVIAL, LACUSTRINE &amp; TERRESTRIAL DEPOSITS</b> (most too small to be indicated on small scale geological maps)</p> <p>including eg Kwaggaskop Fm (Q)</p>	<p>Fluvial, pan, lake and terrestrial sediments, including diatomite (diatom deposits), pedocretes, tufa, cave deposits</p> <p>Late Cretaceous to Holocene c. 65 Ma → 0 Ma</p>	<p>Bones and teeth of mammals (eg proboscideans, rhinos, bovids, horses, micromammals), reptiles, fish, freshwater molluscs, petrified wood, trace fossils (eg termitaria), rhizoliths, diatom floras</p>	<ul style="list-style-type: none"> <li>• Scattered records, many poorly studied (eg from ancient drainage systems)</li> <li>• Include equivalents of famous Arrisdrift Miocene fauna from S. Namibia</li> <li>• Threatened by alluvial diamond mining (eg Gariep, Vaal river gravels)</li> <li>• Orange River Man (100-50 Ka, <i>H. heidelbergensis</i>)</li> </ul>
<p><b>2. TRANSVAAL SUPERGROUP</b></p> <p>2c. Postmasburg Group (Vmk, Vo) 2b. Ghaap Group (Vsc, Vvs, Vca, Va, Vk) 2a. Vryburg Fm (Vv)</p>	<p>Dominantly shallow marine carbonate metasediments (low grade), deeper water BIF (ironstones, chert), subordinate siliciclastic sediments, volcanics, tillites</p> <p>L. Archaean / E. Proterozoic (Vaalian) c. 2.6-2.2 Ga</p>	<p>Shallow marine and lacustrine stromatolites in carbonates organic-walled microfossils (eg cyanobacteria) in siliciclastics / cherts / carbonates</p> <p>Controversial records of 2.2 Ga "trace fossils"</p>	<ul style="list-style-type: none"> <li>• Classic Early Proterozoic stromatolitic successions (Ghaap &amp; Postmasburg Groups of Griqualand West Basin)</li> <li>• Early continental shelf environments (margins of Kaapvaal Craton)</li> </ul>

Fossils in South Africa mainly occur in rocks of sedimentary nature and not in rocks from igneous or metamorphic nature. Therefore, if there is the presence of Karoo Supergroup strata the palaeontological sensitivity is generally **VERY LOW** to **VERY HIGH**.

**Table 2:** Criteria used (Fossil Heritage Layer Browser/SAHRA):

Rock Unit	Significance/vulnerability	Recommended Action
Quaternary	High	Desktop study is required, field assessment likely
Transvaal Supergroup	Moderate	Desktop study required

Databases and collections: Ditsong: National Museum of Natural History.

Impact: **HIGH** for the quaternary sediments and **MODERATE** for the Ghaap Group. There are significant fossil resources that may be impacted by the development and if destroyed are no longer available for scientific research or other public good.

The Project includes one locality Alternative (Figure 2) (**1f,j**) with the above palaeontological sensitivity.

Alternative 1: A polygonal area outlined in red with the N10 National Road and Marydale west; R383 Road north, 40 km northwest of Prieska, and the Orange River directly south. The approximate size of the site is 12468 hectares.

All the land involved in the development was assessed (**ni,nii**) and none of the property is unsuitable for development (see Recommendation B).

#### **H. Description of the Methodology (1e)**

The palaeontological impact assessment study was undertaken in August 2023. A Phase 1: Field Study will entail a walkthrough of the affected portion with photographs (in 20 mega pixels) taken of the site with a digital camera (Canon PowerShot SX620HS). A Global Positioning System (GPS (Garmin eTrex 10) can be used to record the outcrops. A literature survey is included and the study relied on literature, geological maps, Google Maps and Google Earth images.

SAHRA document 7/6/9/2/1 (SAHRA 2012) requires track records/logs from archaeologists not palaeontologists as palaeontologists concentrate on outcrops which may be recorded with a GPS. Isolated occurrences of rocks usually do not constitute an outcrop. Fossils can occur in dongas, as nodules, in fresh rock exposures, and in riverbeds. Finding fossils require the experience and technical knowledge of the professional palaeontologist, but that does not mean that an amateur can't find fossils. The geology of the region is used to predict what type of fossil and zone will be found in any particular region. Archaeozoologists concentrate on more recent fossils in the quaternary and tertiary deposits.

#### **Assumptions and Limitations 1(i):-**

The accuracy and reliability of the report **may be** limited by the following constraints:

1. Most development areas have never been surveyed by a palaeontologist or geophysicist.
2. Variable accuracy of geological maps and associated information.
3. Poor locality information on sheet explanations for geological maps.
4. Lack of published data.
5. Lack of rocky outcrops.
6. Inaccessibility of site – no site visit done.
7. Insufficient data from developer and exact lay-out plan for all structures - sufficient.

#### **A Phase 1 Palaeontological Impact Assessment: Field Study will include:**

1. Recommendations for the future of the site.
2. Background information on the project.
3. Description of the property of affected environment with details of the study area.
4. Description of the geological setting and field observations.
5. Background to palaeontology of the area.
6. Field Rating.
7. Stating of Significance (Heritage Value).

**A Phase 2 Palaeontological Impact Assessment: Mitigation will include:**

1. Recommendations for the future of the site.
2. Description of work done (including number of people and their responsibilities).
3. A written assessment of the work done, fossils excavated, not removed or collected and observed.
4. Conclusion reached regarding the fossil material.
5. A detailed site plan.
6. Possible declaration as a heritage site or Site Management Plan.

**The National Heritage Resources Act No. 25 of 1999 further prescribes:**

Act No. 25 of 1999. National Heritage Resources Act, 1999.

National Estate: 3 (2) (f) archaeological and palaeontological sites,

(i)(1) objects recovered from the soil or waters of South Africa, including archaeological and palaeontological objects and material, meteorites and rare geological specimens,

Heritage assessment criteria and grading: (a) Grade 1: Heritage resources with qualities so exceptional that they are of special national significance;

(b) Grade 11: Heritage resources which, although forming part of the national estate, can be considered to have special qualities which make them significant within the context of a province or a region; and (c) Grade 111: Other heritage resources worthy of conservation.

SAHRA is responsible for the identification and management of Grade 1 heritage resources.

Provincial Heritage Resources Authority (PHRA) identifies and manages Grade 11 heritage resources.

Local authorities identify and manage Grade 111 heritage resources.

No person may damage, deface, excavate, alter, remove from its original position, subdivide or change the planning status of a provincially protected place or object without a permit issued by a heritage resources authority or local authority responsible for the provincial protection.

Archaeology, palaeontology and meteorites: Section 35.

(2) Subject to the provisions of subsection (8) (a), all archaeological objects, palaeontological material and meteorites are the property of the State.

(3) Any person who discovers archaeological or palaeontological objects or material or a meteorite in the course of development or agricultural activity must immediately report the find to the responsible heritage resources authority, or to the nearest local authority offices or museum, which must immediately notify such heritage resources authority.

Mitigation involves planning the protection of significant fossil sites, rock units or other palaeontological resources and/or excavation, recording and sampling of fossil heritage that might be lost during development, together with pertinent geological data. The mitigation may take place before and / or during the construction phase of development. The specialist will require a Phase 2 mitigation permit from the relevant Heritage Resources Authority before a Phase 2 may be implemented.

The Mitigation is done in order to rescue representative fossil material from the study area to allow and record the nature of each locality and establish its age before it is destroyed and to make samples accessible for future research. It also interprets the evidence recovered to allow for education of the public and promotion of palaeontological heritage.

Should further fossil material be discovered during the course of the development (e. g. during bedrock excavations), this must be safeguarded, where feasible *in situ*, and reported to a palaeontologist or to the Heritage Resources authority. In situations where the area is considered palaeontologically sensitive (e. g. Karoo Supergroup Formations, ancient marine deposits in the interior or along the coast) the palaeontologist might need to monitor all newly excavated bedrock. The developer needs to give the palaeontologist sufficient time to assess and document the finds and, if necessary, to rescue a representative sample.

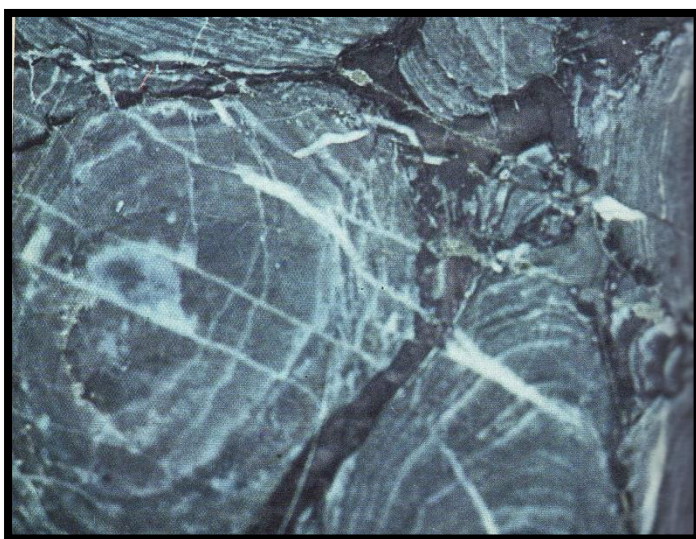
When a Phase 2 palaeontological impact study is recommended, permission for the development to proceed can be given only once the heritage resources authority has received and approved a Phase 2 report and is satisfied that (a) the palaeontological resources under threat have been adequately recorded and sampled, and (b) adequate development on fossil heritage, including, where necessary, *in situ* conservation of heritage of high significance. Careful planning, including early consultation with a palaeontologist and heritage management authorities, can minimise the impact of palaeontological surveys on development projects by selecting options that cause the least amount of inconvenience and delay.

Three types of permits are available; Mitigation, Destruction and Interpretation. The specialist will apply for the permit at the beginning of the process (SAHRA 2012).

### **I. Description of significant fossil occurrences**

Details of the location and distribution of all significant fossil sites or key fossiliferous rock units are often difficult to determine due to thick topsoil, subsoil, overburden and alluvium. Depth of the overburden may vary a lot.

The Quaternary Formation may contain fossils. A very wide range of possible fossil remains, though these are often sparse, such as: mammalian bones and teeth, tortoise remains, ostrich eggshells, non-marine mollusc shells, ostracods, diatoms, and other micro fossil groups, trace fossils (e.g. calcretised termitaria, rhizoliths, burrows, vertebrate tracks), freshwater stromatolites, plant material such as peats, foliage, wood, pollens, within calc tufa. Stromatolite structures range from a centimetre to several tens of metres in size (Groenewald and Groenewald 2014).



**Figure 7:** Thin section of a stromatolite (De Zanche and Mietto 1977).

The threats are:

- Earth moving equipment/machinery (front end loaders, excavators, graders, dozers) during construction and operational.
- The sealing-in or destruction of fossils by development, vehicle traffic, clearing, prospecting, mining, and human disturbance. See Description of the Geological Setting (F) above.

#### **J. Recommendation (1o,p,q)**

- a. There is no objection (see Recommendation B) to the development, it may be necessary to request a Phase 1: Palaeontological Impact Assessment: Field Study if fossils are found during excavating, clearing, trenching or drilling. The palaeontological sensitivity is **HIGH** and **MODERATE** and fossils (stromatolites) may be present.
- b. Preferred choice: Only one locality Alternative is presented and possible.
- c. Care must be taken during the grading of roads, digging of foundations and removing topsoil, subsoil and overburden (see Executive Summary) or blasting of bedrock if applicable. The following should be conserved: if any palaeontological material is exposed during digging, excavating, drilling or clearing SAHRA must be notified. All drilling activities must be stopped, a 30 m no-go barrier constructed and a palaeontologist should be called in to determine proper mitigation measures.
- d. This report must be submitted to SAHRA together with the HIA.

#### Sampling and collecting:

Wherefore, a permit is needed from the South African Heritage Resources Agency (SAHRA / PHRA).

- a. Objections: Cautious. See heritage value and recommendation.
- b. Conditions of development: See Recommendation.
- c. Areas that may need a permit: Yes.
- d. Permits for mitigation: Needed from SAHRA/PHRA if fossils are found.

#### **K. Conclusions**

- a. All the land involved in the development was assessed and none of the property is unsuitable for development (see Recommendation B).
- b. All information needed for the Palaeontological Impact Assessment Study was provided by the Consultant. All technical information was provided by Nyamoki Consulting.
- c. Areas that would involve mitigation and may need a permit from the South African Heritage Resources Agency are discussed.
- d. The following should be conserved: if any palaeontological material is exposed during clearing, digging, excavating, or drilling, SAHRA must be notified. All prospecting activities must be stopped, a 30 m no-go barrier constructed, and a palaeontologist should be called in to determine proper mitigation measures, for example, shallow caves.
- e. No consultation with parties was necessary (**1o,p,q**).
- f. This project may benefit the economy, the growth of the community and social development in general.
- g. Condition in which development may proceed: It is further suggested that a Section 37(2) agreement of the Occupational, Health and Safety Act 85 of 1993 is signed with the relevant contractors to protect the environment (fossils) and adjacent areas as well as for safety and security reasons.



## L. Bibliography

- ALMOND, J.E. and PETHER, J. 2009. SAHRA Palaeotechnical Report: Palaeontological Heritage of the Northern Cape Province. South African Heritage Resources Agency, Pp 1-143.
- ALMOND, J., PETHER, J. and GROENEWALD, G. 2013. South African National Fossil Sensitivity Map. SAHRA and Council for Geosciences.
- BOWLES, M., DE BRUIJN, D., DE KOCK, G., DIXON, R.D., FIELD, M., HAMMERBECK, E.C.I., HERZBERG, W., ERIKSSON, P.G., ALTERMANN, W. and HARTZER, F.J. 2006. *Geology of South Africa*: 10 The Transvaal Supergroup and its precursors, **10**: 237-
- KEYSER, A.W., MACRAE, C.S., VILJOEN, M.J., WINTERBACH, D.J. and WORST, B. 1992. Some superlatives of geology in southern Africa. Presented by The Geological Society of South Africa on occasion of the 29<sup>th</sup> International Geological Congress, Kyoto, Japan. Pp 20.
- DE ZANCHE, V. and MIETTO, P. 1977. *The World of Fossils*. Sampson Low Guides, Berkshire, Printed in Italy, Pp 256.
- GROENEWALD, G. and GROENEWALD, D. 2014. SAHRA Palaeotechnical Report: Palaeontological Heritage of the North West Province. South African Heritage Resources Agency, Pp 1-20.
- KENT, L. E., 1980. Part 1: Lithostratigraphy of the Republic of South Africa, South West Africa/Namibia and the Republics of Bophuthatswana, Transkei and Venda. SACS, Council for Geosciences, *Stratigraphy of South Africa. 1980. South African Committee for Stratigraphy. Handbook 8, Part 1, Pp 690.*
- MACRAE, C. 1999. *Life Etched in Stone: Fossils of South Africa*. The Geological Society of South Africa, Johannesburg. Pp 305.
- MALHERBE, S.J. and MOEN, H.F.G. 1996. 1:250 000 Geological Map of Prieska 2922. South African Committee for Stratigraphy, Council for Geoscience, Pretoria.
- MCCARTHY, T and RUBIDGE, B. 2005. *The Story of Earth Life: A southern African perspective on a 4.6-billion-year journey*. Struik. Pp 333.
- NIXON, N., ERIKSSON, P.G., JACOBS, R. and SNYMAN, C.P. 1988. Early Proterozoic micro-algal structures in carbonaceous shales of the Pretoria Group, south-west of Potchefstroom. *South African Journal of Science*, **84**: 592-595.
- NORMAN, N. 2013. *Geology off the beaten track: exploring South Africa's hidden treasures*. De Beers, Struik, Pp 1-256.
- NORMAN, N. and WHITFIELD, G., 2006. *Geological Journeys*. De Beers, Struik, Pp 1-320.
- PARTRIDGE, T.C., BOTHA, G.A. and HADDON, I.G. 2006. *Geology of South Africa, 29: Cenozoic Deposits of the Interior. Pg 20.*
- SG 2.2 SAHRA APMHOB Guidelines, 2012. Minimum standards for palaeontological components of Heritage Impact Assessment Reports, Pp 1-15.
- SNYMAN, C. P., 1996. *Geologie vir Suid-Afrika*. Departement Geologie, Universiteit van Pretoria, Pretoria, Volume 1, Pp. 513.
- VAN DER WALT, M., DAY, M., RUBIDGE, B. S., COOPER, A. K. & NETTERBERG, I., 2010. Utilising GIS technology to create a biozone map for the Beaufort Group (Karoo Supergroup) of South Africa. *Palaeontologia Africana*, **45**: 1-5.
- VISSER, D.J.L. (ed) 1984. Geological Map of South Africa 1:100 000. South African Committee for Stratigraphy. Council for Geoscience, Pretoria.
- VISSER, D.J.L. (ed) 1989. *Toeligting: Geologiese kaart (1:100 000). Die Geologie van die Republieke van Suid Afrika, Transkei, Bophuthatswana, Venda, Ciskei en die Koningkryke van Lesotho en Swaziland*. South African Committee for Stratigraphy. Council for Geoscience, Pretoria, Pp 494.

**Declaration (Disclaimer) (1b)**

I, Heidi Fourie, declare that I am an independent consultant and have no business, financial, personal or other interest in the proposed development project for which I was appointed to do a palaeontological assessment. There are no circumstances that compromise the objectivity of me performing such work.

I accept no liability, and the client, by receiving this document, indemnifies me against all actions, claims, demands, losses, liabilities, costs, damages and expenses arising from or in connection with services rendered, directly or indirectly by the use of the information contained in this document.

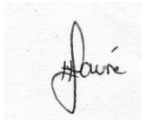
It may be possible that the Desktop Study may have missed palaeontological resources in the project area as the presence of outcrops are not known or visible due to vegetation while others may lie below the overburden of earth and may only be found once development commences.

This report may not be altered in any way and any parts drawn from this report must make reference to this report.

POPI Act 2013 Statement

It provides that everyone has the right to privacy and includes a right to protection against the unlawful collection, retention dissemination and use of personal information contained in this document and pertains to the phone and contact details, signature and contents.

As per the Declaration Section none of the information may be shared without the permission of the author.



---

Heidi Fourie  
2023/09/01

**Appendix 1: Examples of Quaternary age fossils (MacRae 1999).**



Silhouette representation of the larger vertebrates whose remains are represented in Members 1-3 of the Swartkrans site on the outskirts of the town of Krugersdorp. Numbers after each taxon comprise minimum numbers of individuals represented in the remains of the lower bank (Member 1), hanging remnant (Member 1), Member 2 and Member 3 respectively.

Courtesy of Dr C.K. Brain.  
Museum of Natural History, Pretoria

**FAUNA FROM MEMBERS 1 - 3, SWARTKRANS (Makapanian Mammal Age)**  
 Courtesy Dr B. Brain, - Museum of Natural History, Pretoria

1: *Homo erectus* (man) 1,3,2,0. 2: *Australopithecus robustus* (robust apeman) 13,87,17,9. 3: *Parapapio jonesi* 0,8,0,0. 4: *Cercopithecoides* sp. 1,0,0,0. 5: *Papio hamadryas robinsoni* 6,38,8,11. 6: *Theropithecus oswaldi danieli* 1,17,1,14. 7: *Dinopithecus ingens* 1,26,0,0. 8: *Panthera pardus* (leopard) 4,12,2,5. 9: *Dinofelis* sp. (false sabre-toothed cat) 0,1,0,0. 10: *Meganthereon* sp. (dirk-toothed cat) 0,1,0,1. 11: *Acinonyx jubatus* (cheetah) 0,1,0,1. 12: *Felis caracal* (caracal) 1,0,0,0. 13: *Felis lybica* (African wild cat) 0,0,0,1. 14: *Felis serval* (serval) 1,0,0,0. 15: *Panthera leo* (lion) 1,1,0,0. 16: *Hyaena brunnea* (brown hyaena) 1,4,2,3. 17: *Chasmaporthetes nitidula* (hunting hyaena) 2,8,1,2. 18: *Crocuta crocuta* (spotted hyaena) 0,2,1,1. 19: *Proteles* sp. (large fossil aardwolf) 1,1,0,1. 20: *Vulpes* sp. (fox) 0,2,0,3. 21: *Canis mesomelas* (black-backed jackal) 3,4,4,5. 22: Large canid gen. and sp. indet. 0,0,1,1. 23: *Aonyx capensis* (Cape clawless otter) 2,0,1,2. 24: *Atilax* sp. (water mongoose) 0,0,1,1. 25: *Cynictis penicillata* (yellow mongoose) 0,0,1,1. 26: *Herpestes ichneuman* (large grey mongoose) 1,0,0,0. 27: *Suricata suricatta* (suricate) 0,0,2,1. 28: *Genetta tigrina* (large-spotted genet) 0,0,0,1. 29: *Manis* sp. (pangolin) 0,0,0,1. 30: *Orycteropus afer* (antbear) 1,0,1,1. 31: cf. *Elphas* sp. 2,0,0,1. 32: *Procavia transvaalensis* (large fossil dassie) 3,8,3,5. 33: *Procavia antiqua* (fossil dassie) 17,16,10,11. 34: *Hipparion lybicum steytleri* (three-toed horse) 1,1,1,1. 35: *Equus capensis* (giant Cape horse) 2,6,3,5. 36: *Equus burchelli* (Burchell's zebra) 0,0,0,1. 37: *Phacochoerus* sp. (warthog) 1,0,3,1. 38: cf. *Tapinochoerus meadowsi* (large fossil pig) 1,7,1,1. 39: *Hippopotamus* sp. (hippopotamus) 1,0,0,1. 40: Giraffid 0,1,1,1. 41: *Megalotragus* sp. (giant hartebeest) 0,3,1,3. 42: *Connochaetes* sp. (wildebeest) 7,19,7,7. 43: Medium alcelaphine: *Alcelaphus* sp. or *Beatragus* sp. (hartebeest) 3,22,3,6. 44: *Rabaticerus porrocornutus* 0,2,0,0. 45: *Damaliscus* sp. (blesbok) 2,4,6,6. 46: *Antidorcas marsupialis australis* (springbok) 11,0,10,18. 47: *Antidorcas recki* 0,6,2,1. 48: cf. *Gazella* sp. (gazelle) 5,6,5,14. 49: *Oreotragus oreotragus* (klipspringer) 1,0,0,1. 50: *Oreotragus major* (fossil klipspringer) 0,1,0,0. 51: *Raphicerus campestris* (steenbok) 1,0,1,3. 52: *Makapania* sp. (musk ox) 0,3,0,0. 53: *Syncerus* sp. (buffalo) 2,3,2,3. 54: *Taurotragus oryx* (eland) 0,0,1,1. 55: *Tragelaphus strepsiceros* (kudu) 0,4,0,1. 56: *Hippotragus* cf. *niger* (sable) 0,0,1,3. 57: *Pelea* sp. (rhebok) 0,2,0,2. 58: *Redunca arundinum* (reedbuck) 0,1,0,0. 59: Lagomorph gen. and sp. indet. (hare) 9,0,4,7. 60: *Pedetes* sp. (springhare) 1,0,1,1. 61: *Hystrix africaeaustralis* (porcupine) 2,2,1,2. 62: *Chelonia* indet. (tortoise) 1,0,2,2.





**Left:** Teeth of the white rhino *Ceratotherium simum* from Makapansgat. **Right:** View from above shows the sharp cutting edges of the tooth row of this predominant grazer. Specimen 170 mm long.

In the collection of the Bernard Price Institute for Palaeontological Research, University of the Witwatersrand, Johannesburg.  
Photograph C.S. MacRae

**Appendix 2: Table 3: Listing points in Appendix 6 of the Act and position in Report (in bold).**

Section in Report	Point in Act	Requirement
B	1(c)	Scope and purpose of report
B	1(d)	Duration, date and season
B	1(g)	Areas to be avoided
D	1(ai)	Specialist who prepared report

D	1(aii)	Expertise of the specialist
F Figure 3	1(h)	Map
F	1(ni)	Authorisation
F	1(nii)	Avoidance, management, mitigation and closure plan
G Table 1	1(cA)	Quality and age of base data
G Table 2	1(cB)	Existing and cumulative impacts
G	1(f)	Details or activities of assessment
G	1(j)	Description of findings
H	1(e)	Description of methodology
H	1(i)	Assumptions
J	1(o)	Consultation
J	1(p)	Copies of comments during consultation
J	1(q)	Information requested by authority
Declaration	1(b)	Independent declaration
Appendix 2	1(k)	Mitigation included in EMPr
Appendix 2	1(l)	Conditions included in EMPr
Appendix 2	1(m)	Monitoring included in EMPr
D	2	Protocol or minimum standard

### **Appendix 3: Management Plan and Protocol for Chance Finds (1k,l,m).**

This section covers the recommended protocol for a Phase 2 Mitigation process as well as for reports where the Palaeontological Sensitivity is **LOW**; this process guides the palaeontologist / palaeobotanist on site and should not be attempted by the layman / developer. As part of the Environmental Authorisation conditions, an Environmental Control Officer (ECO) will be appointed to oversee the construction activities in line with the legally binding Environmental Management Programme (EMPr) so that when a fossil is unearthed they can notify the relevant department and specialist to further investigate. Therefore, the EMPr must be updated to include the involvement of a palaeontologist during the digging and excavation (ground breaking) phase of the development.

The EMPr already covers the conservation of heritage and palaeontological material that may be exposed during construction activities.

- When a fossil is found the area must be fenced-off with a 30 m barrier and the construction workers must be informed that this is a no-go area.
- If fossils have already been found they must be kept in a safe place for further inspection.
- The ECO should familiarise him- or herself with the formations and its fossils. A site visit after blasting, drilling, clearing or excavating is recommended and the keeping of a photographic record when feasible.
- Most museums and universities have good examples of fossils.
- The developer must survey the areas affected by the development and indicate on plan where the construction / development / mining will take place. Trenches have to be dug to ascertain how deep the sediments are above the bedrock (can be a few hundred metres). This will give an indication of the depth of the topsoil, subsoil, and overburden, if need be trenches should be dug deeper to expose the interburden.

Mitigation will involve recording, rescue and judicious sampling of the fossil material present in the layers sandwiched between the geological / coal layers. It must include information on number of taxa, fossil abundance, preservational style, and taphonomy. This can only be done during mining or excavations. In order for this to happen, in case of coal mining operations, the process will have to be closely scrutinised by a professional

palaeontologist / palaeobotanist to ensure that only the coal layers are mined and the interlayers (siltstone and mudstone) are surveyed for fossils or representative sampling of fossils are taking place.

The palaeontological impact assessment process presents an opportunity for identification, access and possibly salvage of fossils and add to the few good plant localities. Mitigation can provide valuable onsite research that can benefit both the community and the palaeontological fraternity.

A Phase 2 study is very often the last opportunity we will ever have to record the fossil heritage within the development area. Fossils excavated will be stored at a National Repository.

#### **A Phase 2 Palaeontological Impact Assessment: Mitigation will include (SAHRA) -**

1. Recommendations for the future of the site.
2. Description and purpose of work done (including number of people and their responsibilities).
3. A written assessment of the work done, fossils excavated, not removed or collected and observed.
4. Conclusion reached regarding the fossil material.
5. A detailed site plan and map.
6. Possible declaration as a heritage site or Site Management Plan.
7. Stakeholders.
8. Detailed report including the Desktop and Phase 1 study information.
9. Annual interim or progress Phase 2 permit reports as well as the final report.
10. Methodology used.

Three types of permits are available; Mitigation, Destruction and Interpretation. The specialist will apply for the permit at the beginning of the process (SAHRA 2012).

The Palaeontological Society of South Africa (PSSA) does not have guidelines on excavating or collecting, but the following is suggested:

1. The developer needs to clearly stake or peg-out (survey) the areas affected by the mining/ construction/ development operations and dig representative trenches and if possible supply geological borehole data.
2. When clearing topsoil, subsoil or overburden and hard rock (outcrop) is found, the contractor needs to stop all work.
3. A Palaeobotanist / palaeontologist (contact SAHRIS for list) must then inspect the affected areas and trenches for fossiliferous outcrops / layers. The contractor / developer may be asked to move structures, and put the development on hold.
4. If the palaeontologist / palaeobotanist is satisfied that no fossils will be destroyed or have removed the fossils, development and removing of the topsoil can continue.
5. After this process the same palaeontologist / palaeobotanist will have to inspect and offer advice through the Phase 2 Mitigation Process. Bedrock excavations for footings may expose, damage or destroy previously buried fossil material and must be inspected.
6. When permission for the development is granted, the next layer can be removed, if this is part of a fossiliferous layer, then with the removal of each layer of sediment, the palaeontologist / palaeobotanist must do an investigation (a minimum of once a week).
7. At this stage the palaeontologist / palaeobotanist in consultation with the developer / mining company must ensure that a further working protocol and schedule is in place. Onsite training should take place, followed by an annual visit by the palaeontologist / palaeobotanist.

#### **Fossil excavation, if necessary, during Phase 2:**

1. Photography of fossil / fossil layer and surrounding strata.
2. Once a fossil has been identified as such, the task of extraction begins.
3. It usually entails the taking of a GPS reading and recording lithostratigraphic, biostratigraphic, date, collector and locality information.
4. Use Paraloid (B-72) as an adhesive and protective glue, parts of the fossil can be kept together (not necessarily applicable to plant fossils).
5. Slowly chipping away of matrix surrounding the fossil using a geological pick, brushes and chisels.
6. Once the full extent of the fossil / fossils is visible, it can be covered with a plaster jacket (not necessarily applicable to plant fossils).
7. Chipping away sides to loosen underside.
8. Splitting of the rock containing palaeobotanical material should reveal any fossils sandwiched between the layers.

**SAHRA Documents:**

Guidelines to Palaeontological Permitting Policy.

Minimum Standards: Palaeontological Component of Heritage Impact Assessment reports.

Guidelines for Field Reports.

Palaeotechnical Reports for all the Provinces.

**Appendix 4:** Impact Statement

The development footprint is situated on a geological layer with a **HIGH** palaeontological sensitivity. The nature of the impact is the destruction of Fossil Heritage. Loss of fossil heritage will have a negative impact. The extent of the impact only extends in the region of the development activity footprint and may include transport routes. The expected duration of the impact is assessed as potentially permanent. The intensity/magnitude of the impact is moderate as it may continue in a modified way. The probability of the impact occurring will be high.

In the absence of mitigation procedures (should fossil material be present within the affected area) the damage or destruction of any palaeontological materials will be permanent. The loss of resources occurs but natural cultural and social processes continue, albeit in a modified manner. With Mitigation the impact will be low and the cumulative impact is low. Impacts on palaeontological heritage during the construction and preconstruction phase could potentially occur but are regarded as having a moderate possibility. The significance of the impact occurring will be  $S = (2+5+8)4$

$S = 60$  Medium (30-60). After Mitigation it may be low.