

**DESKTOP SURVEY FOR THE PROPOSED L1524  
ROAD UPGRADE, KIRKIN TULLOCK, LADYSMITH,  
KWAZULU-NATAL**

**FOR K2M CONSULTING  
DATE: 8 SEPTEMBER 2015**

**By Gavin Anderson**

**Umlando: Archaeological Surveys and Heritage  
Management**

**PO Box 102532, Meerensee, 3901**

**Phone/fax: 035-7531785 Fax: 0865445631**

**Cell: 0836585362**



## TABLE OF CONTENT

INTRODUCTION .....	3
<b>KWAZULU-NATAL HERITAGE ACT NO. 4 OF 2008</b> .....	7
METHOD .....	9
Defining significance.....	10
RESULTS .....	12
DESKTOP STUDY .....	12
PALAEONTOLOGICAL IMPACT ASSESSMENT .....	16
CONCLUSION.....	18

## TABLE OF FIGURES

FIG. 1 GENERAL LOCATION OF THE STUDY AREA.....	4
FIG. 2: AERIAL OVERVIEW OF THE STUDY AREA .....	5
FIG. 3: TOPOGRAPHICAL OVERVIEW OF THE STUDY AREA.....	6
FIG. 4: LOCATION OF KNOWN HERITAGE SITES NEAR THE STUDY AREA .....	13
FIG. 5: SURVEYOR GENERAL DIAGRAM OF KIRKIN TULLOCH 2105 .....	14
FIG. 6: STUDY AREA IN 1963.....	15
FIG. 7: PALAEONTOLOGICAL SENSITIVITY MAP .....	16

## INTRODUCTION

The proposed Road L1524 upgrade involves the widening and surfacing of an existing gravel road to blacktop. The total portion of the road intended for upgrading is 6,5 km in length and 7 metre wide. The proposed first phase will be between Km 0,0 to Km 3,0. It would appear that the first phase will not trigger any listed activities in terms of National Environmental Management Act, 1998 (Act No. 107 of 1998) as amended and the Environmental Impact Assessment Regulations 2010. The second phase that needs to be assessed, will be approximately 3,5 Km in length from Km 3,0 to Km 6,5. The existing L1524 road will be widened from 7 metres to 8 metres. The Road L1524 transverses two tributaries of the Klip River. There are currently more than two watercourse crossing with causeways, storm water pipes.

The proposed upgrade encompasses:

- Importing and processing of base-course materials overlay;
- Upgrading and construction of drainage structures and culverts where necessary;
- Installing Sidewalks and side drains;
- And the laying of the asphalt on the total length of the road.

Figures 1 – 3 indicate the location of the proposed line.

FIG. 1 GENERAL LOCATION OF THE STUDY AREA

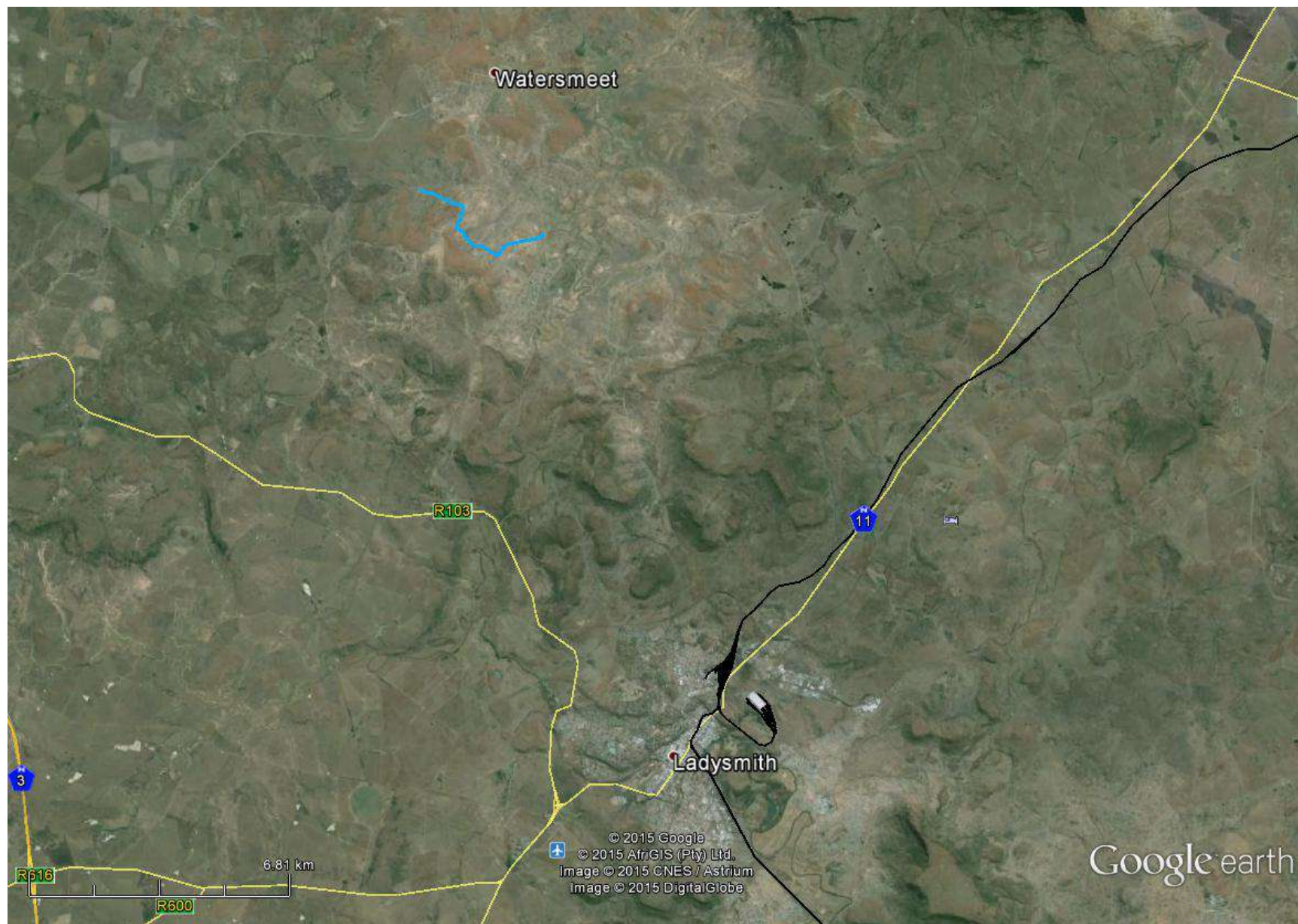


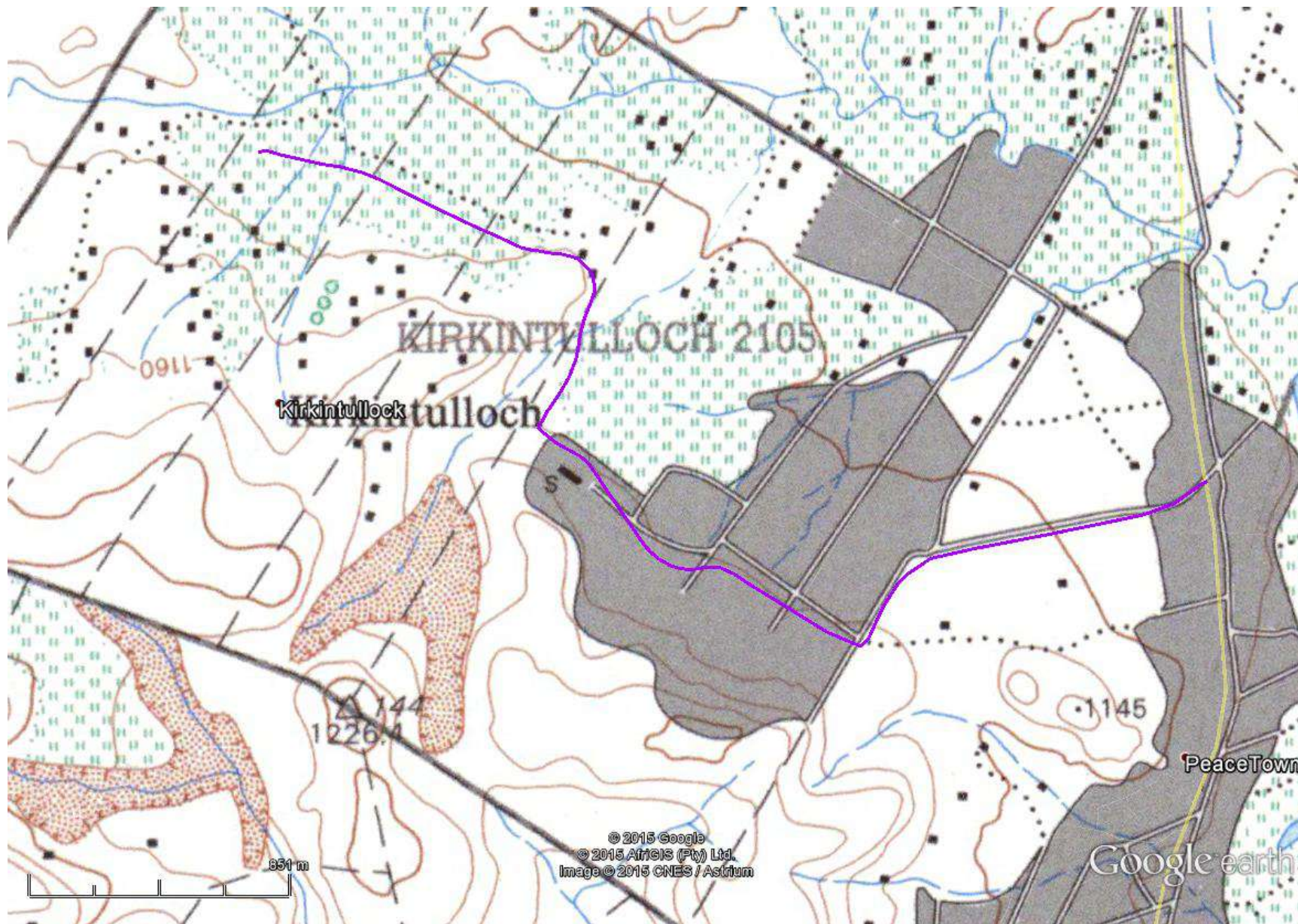


FIG. 2: AERIAL OVERVIEW OF THE STUDY AREA





FIG. 3: TOPOGRAPHICAL OVERVIEW OF THE STUDY AREA



## KWAZULU-NATAL HERITAGE ACT NO. 4 OF 2008

### “General protection: Structures.—

- No structure which is, or which may reasonably be expected to be older than 60 years, may be demolished, altered or added to without the prior written approval of the Council having been obtained on written application to the Council.
- Where the Council does not grant approval, the Council must consider special protection in terms of sections 38, 39, 40, 41 and 43 of Chapter 9.
- The Council may, by notice in the *Gazette*, exempt—
  - A defined geographical area; or
  - defined categories of sites within a defined geographical area, from the provisions of subsection where the Council is satisfied that heritage resources falling in the defined geographical area or category have been identified and are adequately protected in terms of sections 38, 39, 40, 41 and 43 of Chapter 9.
- A notice referred to in subsection (2) may, by notice in the *Gazette*, be amended or withdrawn by the Council.

### General protection: Graves of victims of conflict.—No person may damage, alter, exhume, or remove from its original position—

- the grave of a victim of conflict;
- a cemetery made up of such graves; or
- any part of a cemetery containing such graves, without the prior written approval of the Council having been obtained on written application to the Council.
- General protection: Traditional burial places.—
  - No grave—
    - not otherwise protected by this Act; and
    - not located in a formal cemetery managed or administered by a local authority, may be damaged, altered, exhumed, removed from its original position, or otherwise disturbed without the prior written approval of the Council having been obtained on written application to the Council.

The Council may only issue written approval once the Council is satisfied that—

- the applicant has made a concerted effort to consult with communities and individuals who by tradition may have an interest in the grave; and
- the applicant and the relevant communities or individuals have reached agreement regarding the grave.

General protection: Battlefield sites, archaeological sites, rock art sites, palaeontological sites, historic fortifications, meteorite or meteorite impact sites.—

- No person may destroy, damage, excavate, alter, write or draw upon, or otherwise disturb any battlefield site, archaeological site, rock art site, palaeontological site, historic fortification, meteorite or meteorite impact site without the prior written approval of the Council having been obtained on written application to the Council.
- Upon discovery of archaeological or palaeontological material or a meteorite by any person, all activity or operations in the general vicinity of such material or meteorite must cease forthwith and a person who made the discovery must submit a written report to the Council without delay.
- The Council may, after consultation with an owner or controlling authority, by way of written notice served on the owner or controlling authority, prohibit any activity considered by the Council to be inappropriate within 50 metres of a rock art site.
- No person may exhume, remove from its original position or otherwise disturb, damage, destroy, own or collect any object or material associated with any battlefield site, archaeological site, rock art site, palaeontological site, historic fortification, meteorite or meteorite impact site without the prior written approval of the Council having been obtained on written application to the Council.
- No person may bring any equipment which assists in the detection of metals and archaeological and palaeontological objects and material, or excavation equipment onto any battlefield site, archaeological site, rock art site, palaeontological site, historic fortification, or meteorite impact site, or



use similar detection or excavation equipment for the recovery of meteorites, without the prior written approval of the Council having been obtained on written application to the Council.

- The ownership of any object or material associated with any battlefield site, archaeological site, rock art site, palaeontological site, historic fortification, meteorite or meteorite impact site, on discovery, vest in the Provincial Government and the Council is regarded as the custodian on behalf of the Provincial Government.” (KZN Heritage Act of 2008)

## METHOD

The method for Heritage assessment consists of several steps.

The first step forms part of the desktop assessment. Here we would consult the database that has been collated by Umlando. These databases contains archaeological site locations and basic information from several provinces (information from Umlando surveys and some colleagues), most of the national and provincial monuments and battlefields in Southern Africa (<http://www.vuvuzela.com/googleearth/monuments.html>) and cemeteries in southern Africa (information supplied by the Genealogical Society of Southern Africa). We use 1<sup>st</sup> and 2<sup>nd</sup> edition 1:50 000 topographical and 1937 aerial photographs where available, to assist in general location and dating of buildings and/or graves. The database is in Google Earth format and thus used as a quick reference when undertaking desktop studies. Where required we would consult with a local data recording centre, however these tend to be fragmented between different institutions and areas and thus difficult to access at times. We also consult with an historical architect, palaeontologist, and an historian where necessary.

The survey results will define the significance of each recorded site, as well as a management plan.

All sites are grouped according to low, medium, and high significance for the purpose of this report. Sites of low significance have no diagnostic artefacts or features. Sites of medium significance have diagnostic artefacts or features and these sites tend to be sampled. Sampling includes the collection of artefacts for future analysis. All diagnostic pottery, such as rims, lips, and decorated sherds are sampled, while bone, stone, and shell are mostly noted. Sampling usually occurs on most sites. Sites of high significance are excavated and/or extensively sampled. Those sites that are extensively sampled have high research potential, yet poor preservation of features.

### **Defining significance**

Heritage sites vary according to significance and several different criteria relate to each type of site. However, there are several criteria that allow for a general significance rating of archaeological sites.

These criteria are:

#### **1. State of preservation of:**

- 1.1. Organic remains:
  - 1.1.1. Faunal
  - 1.1.2. Botanical
- 1.2. Rock art
- 1.3. Walling
- 1.4. Presence of a cultural deposit
- 1.5. Features:
  - 1.5.1. Ash Features
  - 1.5.2. Graves
  - 1.5.3. Middens
  - 1.5.4. Cattle byres
  - 1.5.5. Bedding and ash complexes

**2. Spatial arrangements:**

- 2.1. Internal housing arrangements
- 2.2. Intra-site settlement patterns
- 2.3. Inter-site settlement patterns

**3. Features of the site:**

- 3.1. Are there any unusual, unique or rare artefacts or images at the site?
- 3.2. Is it a type site?
- 3.3. Does the site have a very good example of a specific time period, feature, or artefact?

**4. Research:**

- 4.1. Providing information on current research projects
- 4.2. Salvaging information for potential future research projects

**5. Inter- and intra-site variability**

- 5.1. Can this particular site yield information regarding intra-site variability, i.e. spatial relationships between various features and artefacts?
- 5.2. Can this particular site yield information about a community's social relationships within itself, or between other communities?

**6. Archaeological Experience:**

- 6.1. The personal experience and expertise of the CRM practitioner should not be ignored. Experience can indicate sites that have potentially significant aspects, but need to be tested prior to any conclusions.

**7. Educational:**

- 7.1. Does the site have the potential to be used as an educational instrument?
- 7.2. Does the site have the potential to become a tourist attraction?
- 7.3. The educational value of a site can only be fully determined after initial test-pit excavations and/or full excavations.

**8. Other Heritage Significance:**

- 8.1. Palaeontological sites
- 8.2. Historical buildings



- 8.3. Battlefields and general Anglo-Zulu and Anglo-Boer sites
- 8.4. Graves and/or community cemeteries
- 8.5. Living Heritage Sites
- 8.6. Cultural Landscapes, that includes old trees, hills, mountains, rivers, etc related to cultural or historical experiences.

The more a site can fulfill the above criteria, the more significant it becomes. Test-pit excavations are used to test the full potential of an archaeological deposit. This occurs in Phase 2. These test-pit excavations may require further excavations if the site is of significance (Phase 3). Sites may also be mapped and/or have artefacts sampled as a form of mitigation. Sampling normally occurs when the artefacts may be good examples of their type, but are not in a primary archaeological context. Mapping records the spatial relationship between features and artefacts.

## **RESULTS**

### **DESKTOP STUDY**

The desktop study consisted of analysing various maps for evidence of prior habitation in the study area, as well as for previous archaeological surveys. The archaeological database indicates that there are archaeological sites in the general area (fig. 4). These sites include all types of Stone Age and Iron Age sites. No sites occur in the study area.

No national monuments, battlefields, or historical cemeteries are known to occur in the study area. There are several cemeteries outside of the study area.

The Farm Kirkin Tulloch 2105 was first surveyed in 1859 (fig. 5). No features are indicated on the map. This area was farmed from the 1840s by the Voortrekkers.

FIG. 4: LOCATION OF KNOWN HERITAGE SITES NEAR THE STUDY AREA

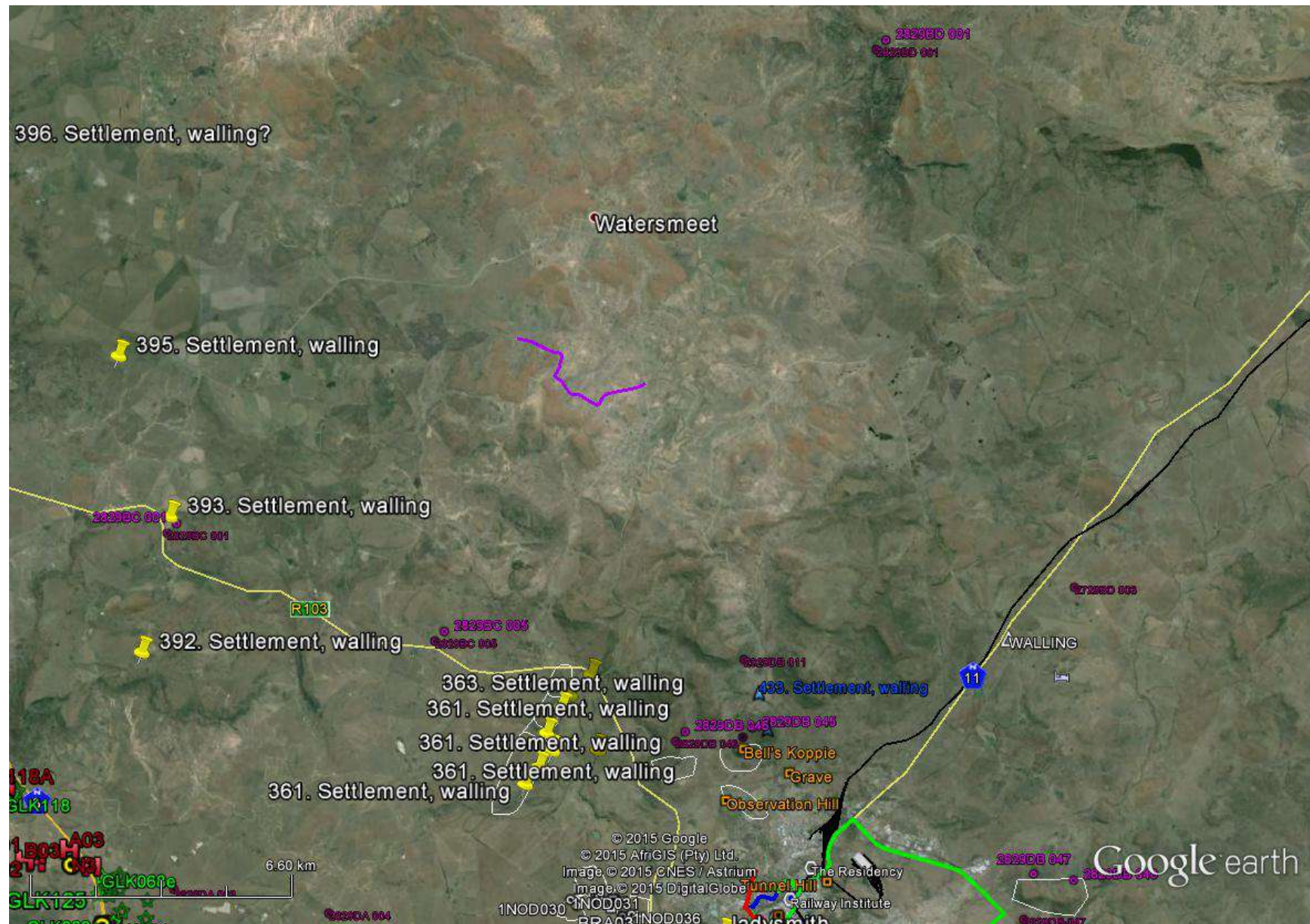


FIG. 5: SURVEYOR GENERAL DIAGRAM OF KIRKIN TULLOCH 2105

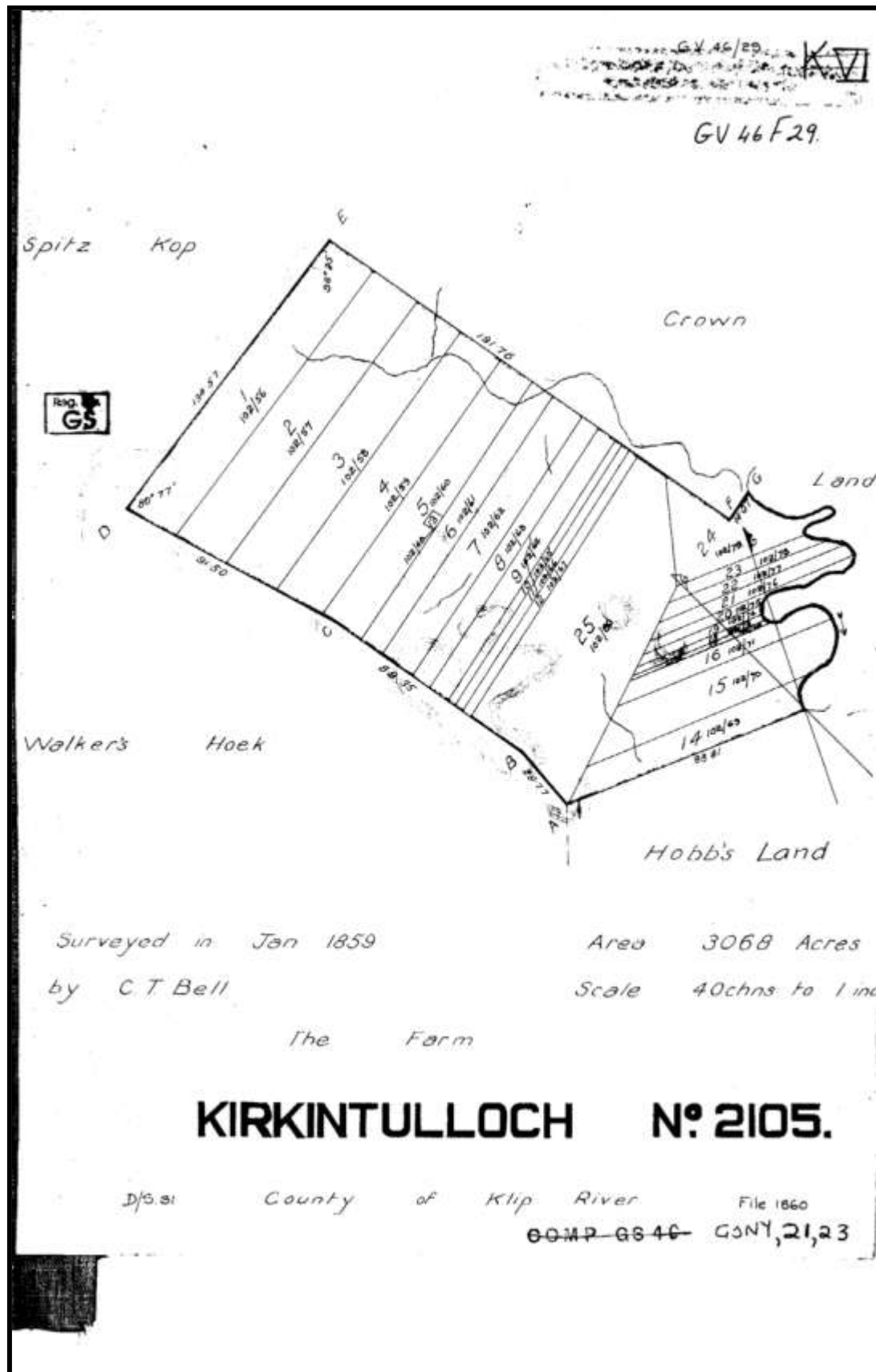
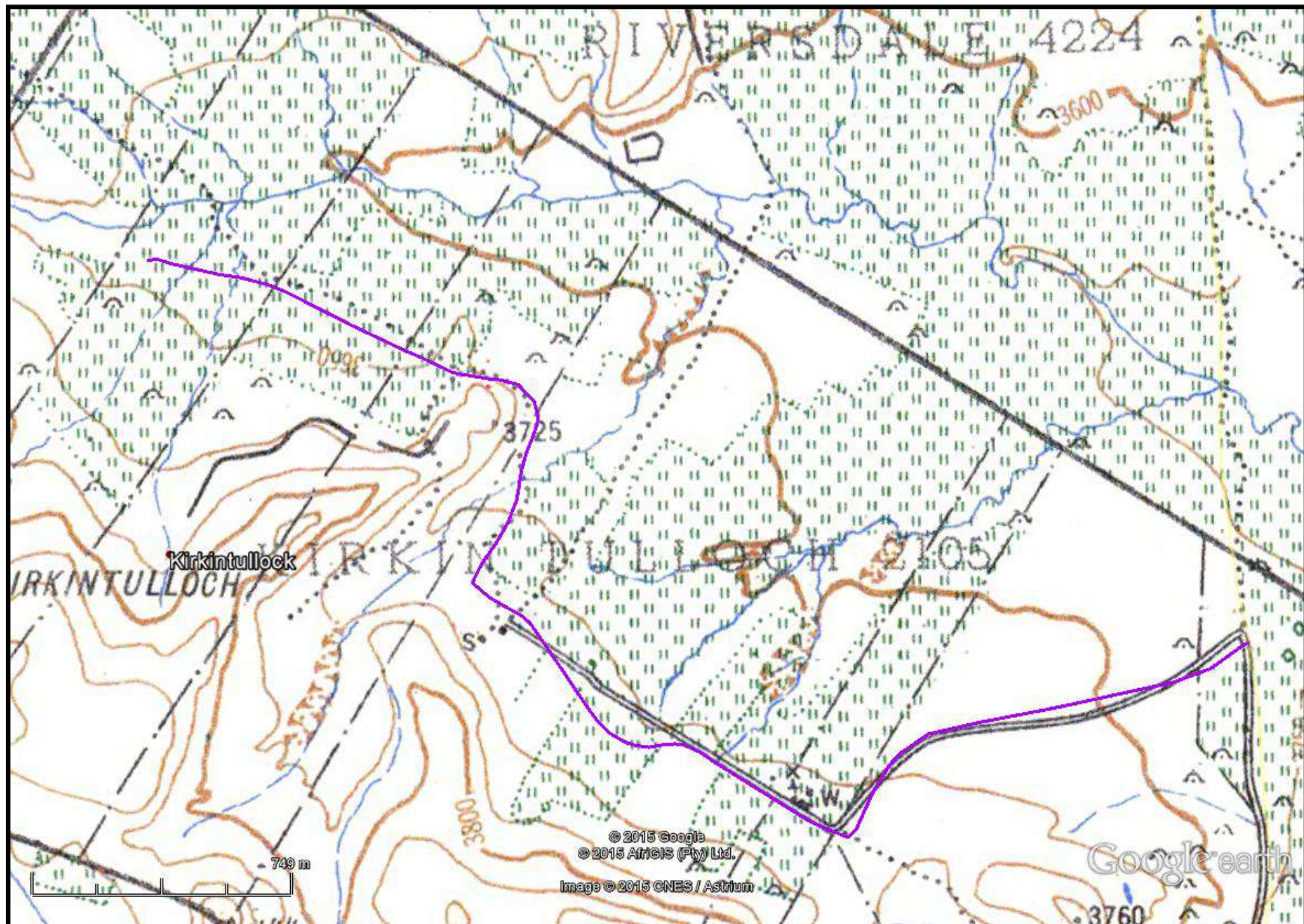




FIG. 6: STUDY AREA IN 1963

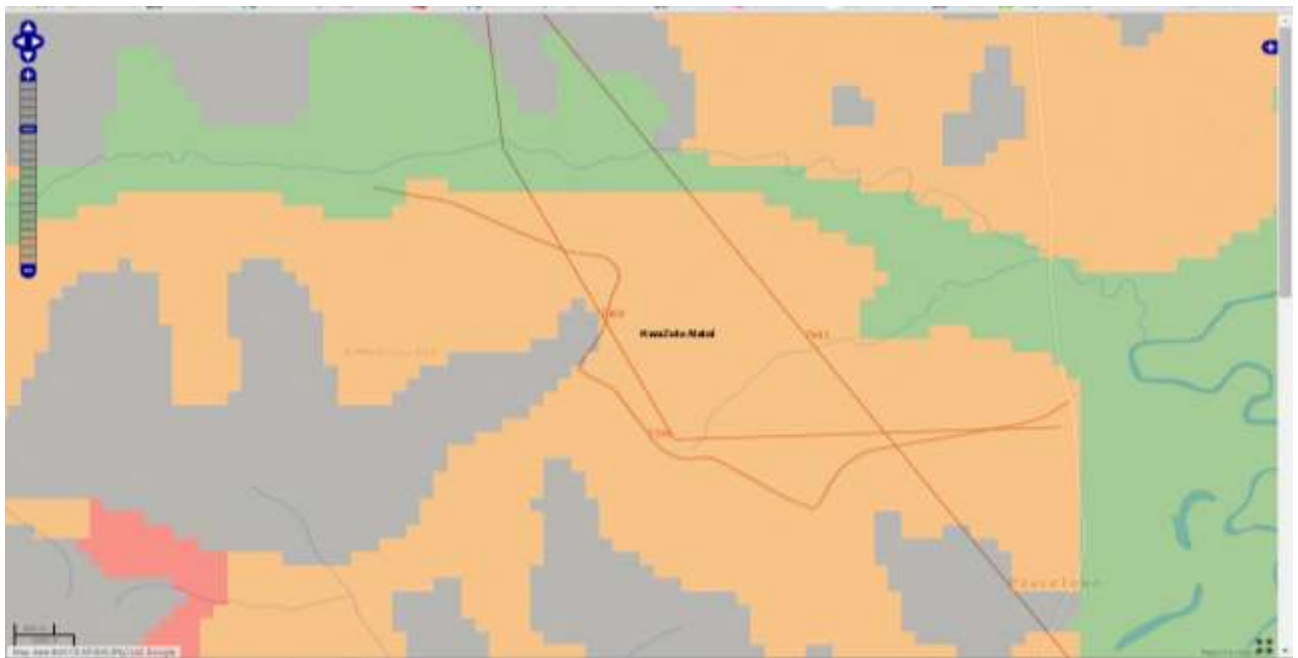


The 1968 topographical map indicates that the area has been farmed for a while, and that no structures will be affected by the road widening (fig. 6).

### PALAEONTOLOGICAL IMPACT ASSESSMENT

The area is of high palaeontological sensitivity (fig. 7). A palaeontological survey will be required if this was a new road. However since it is an upgrade of an existing road, no impact will occur.

**FIG. 7: PALAEONTOLOGICAL SENSITIVITY MAP**



COLOUR	SENSITIVITY	REQUIRED ACTION
RED	VERY HIGH	field assessment and protocol for finds is required
ORANGE/YELLOW	HIGH	desktop study is required and based on the outcome of the desktop study, a field assessment is likely
GREEN	MODERATE	desktop study is required
BLUE	LOW	no palaeontological studies are required however a protocol for finds is required
GREY	INSIGNIFICANT/ZERO	no palaeontological studies are required
WHITE/CLEAR	UNKNOWN	these areas will require a minimum of a desktop study. As more information comes to light, SAHRA will continue to populate the map.

Figure 8 shows the views of the road.



FIG. 8: VIEWS OF THE EXISTING ROAD





## **CONCLUSION**

A brief heritage desktop was undertaken for the proposed L1524 road upgrade. The road is an existing road and will only be widened by 1m. There will be upgrades of existing servitudes that will occur within the road existing reserve.

It is highly unlikely that the road upgrade will affect any heritage resources. The road upgrade should be exempt from further HIA work. This exemption is, however not for any borrow pits or quarries associated with the road as they did not form part of the study.