

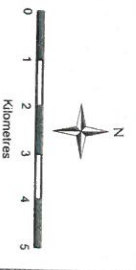
**NDATSHANA
RURAL HOUSING PROJECT**

ACCESS TO PRIMARY SCHOOLS

Number of Settlements Inside Buffer = 301
 Number of Settlements Outside Buffer = 410
 Percentage of Settlements Inside Buffer = 42%
 Percentage of Settlements Outside Buffer = 58%

Legend

- Primary Schools
- 1.5 km Primary Schools Buffer
- Secondary Schools
- Project Boundary
- Rivers
- Provincial
- District
- Local
- Health Facilities



LOCALITY MAP



CLIENT:
 NOUTHU LOCAL MUNICIPALITY

TOWN PLANNER:

MAABUNE CONSULTING

IMPLEMENTING AGENT:

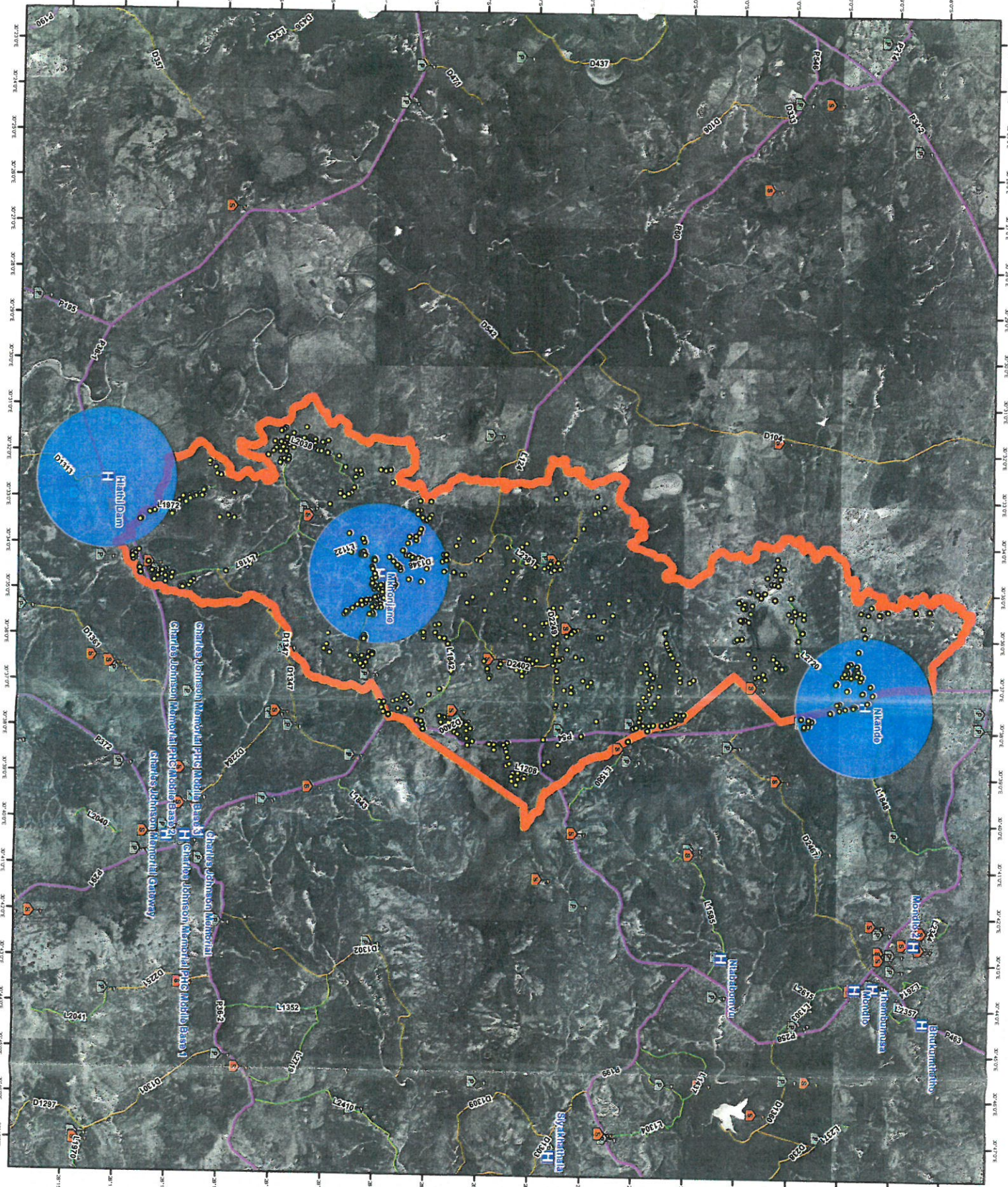
 ZD P.A. OJIST
 NATATSHANA PROJECT AREA

PROJECT MANAGEMENT

APPROVED:

DATE: 2017/08/22

SCALE: 1:110 000



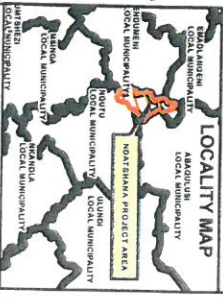
**NDATSHANA
RURAL HOUSING PROJECT**

ACCESS TO HEALTH FACILITIES

Number of Beneficiaries Inside Buffer = 154
 Number of Beneficiaries Outside Buffer = 557
 Percentage of Beneficiaries Inside Buffer = 22%
 Percentage of Beneficiaries Outside Buffer = 78%

Legend

- Project Boundary
- Primary Schools
- Secondary Schools
- 2.5 km Health facilities Buffer
- Health Facilities
- Beneficiaries
- Provincial
- District
- Local



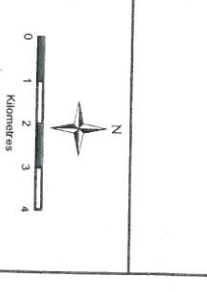
CLIENT: NOUTHU LOCAL MUNICIPALITY	
CLIENT: NOUTHU LOCAL MUNICIPALITY	
TOWN PLANNER: MABUNE CONSULTING	
IMPLEMENTING AGENT: ZD PROJECT MANAGEMENT	
APPROVED:	
DATE: 2017/06/22	SCALE: 1:122 000



**NDATSHANA
RURAL HOUSING PROJECT**

ACCESS TO SECONDARY SCHOOLS
 Number of Settlements Inside Buffer = 402
 Number of Settlements Outside Buffer = 309
 Percentage of Settlements Inside Buffer = 57%
 Percentage of Settlements Outside Buffer = 43%

- Legend**
- Secondary Schools
 - 2.5km Secondary Schools Buffer
 - Primary Schools
 - Beneficiaries
 - Project Boundary
 - Rivers
 - Provincial
 - District
 - Local
 - Health Facilities



CLIENT: NOUTHU LOCAL MUNICIPALITY	
TOWN PLANNER: MABUNE CONSULTING	
IMPLEMENTING AGENT: ZD PROJECT MANAGEMENT	
DATE: 2017/08/22	SCALE: 1:120 000