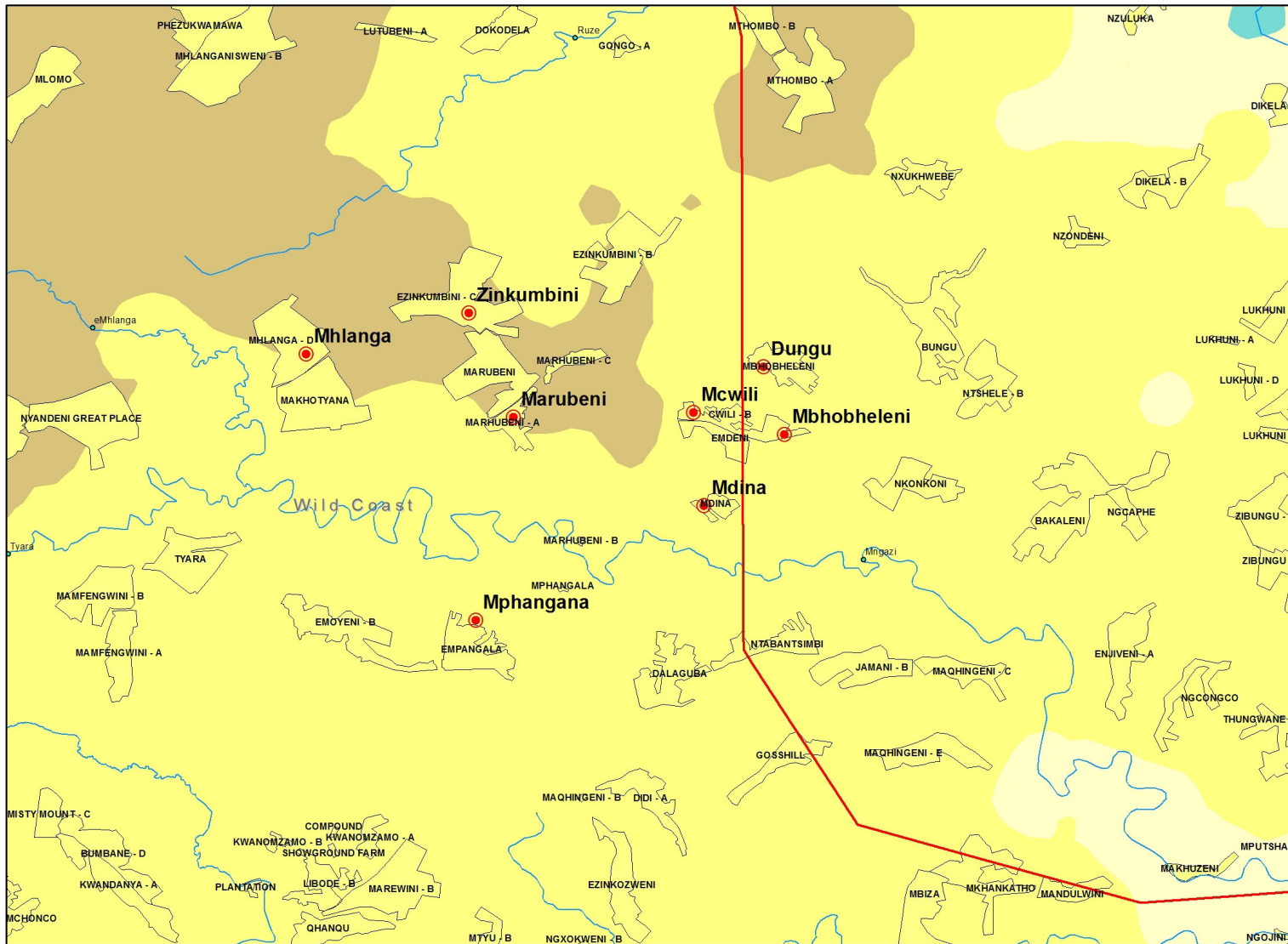


Biodiversity Priority Areas Map of RDP Developments in eight (8) villages, Eastern Cape



WSM LESHKA
CONSULTING (PTY) LTD

Legend

Priority Biodiversity Areas

● Studied Villages

— Rivers and Streams

Human Settlements

Meters Above Mean Sea Level

10 - 331

332 - 651

652 - 971

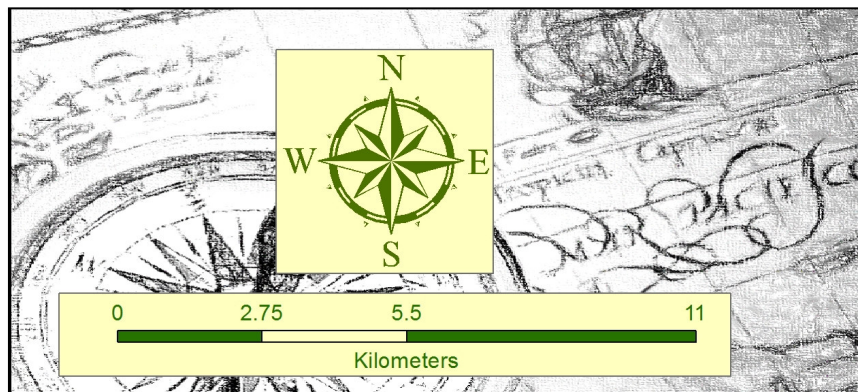
972 - 1 292

1 293 - 1 612

1 613 - 1 932

1 933 - 2 253

2 254 - 2 573



"Your Partner in Calculating Environmental Solutions"

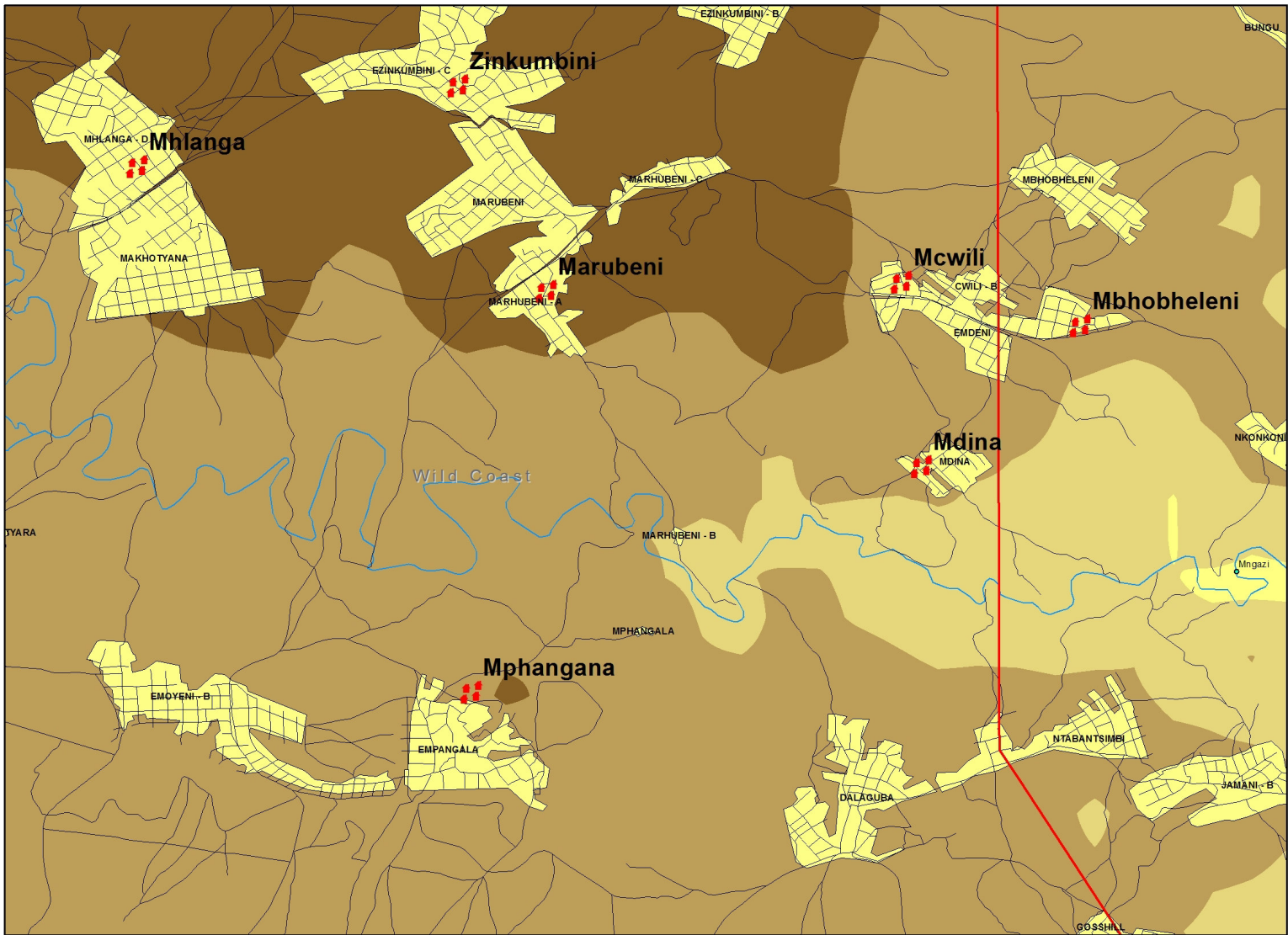
ENVIASS 
ENVIRONMENTAL ASSURANCE (Pty)Ltd

© Environmental Assurance (Pty) Ltd. This document is protected by Copyright i.t.o. the South African Copyright Act (98 of 1978) and it may not be used, copied or otherwise reproduced without the written consent of the author or company.

Author: J.P. Nortje
Date: 23-09-2014
Coordinate system: WGS1984



Priority Biodiversity Areas RDP Developments in eight (8) villages, Eastern Cape



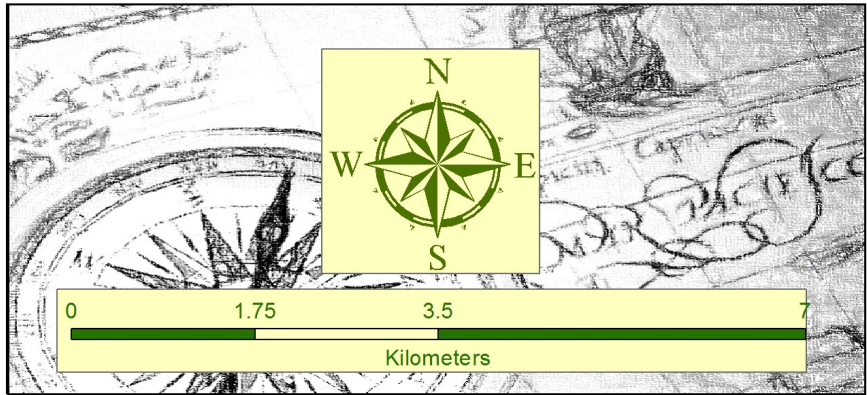
WSM LESHKA
CONSULTING (PTY) LTD

Legend

- Studied Villages
- Priority Biodiversity Areas
- Roads
- Rivers and Streams
- Human Settlements

Meters Above Mean Sea Level

- 2 - 160
- 161 - 318
- 319 - 476
- 477 - 634
- 635 - 792
- 793 - 950
- 951 - 1 108
- 1 109 - 1 266
- 1 267 - 1 424
- 1 425 - 1 582



"Your Partner in Calculating Environmental Solutions"

ENVIASS ENVIRONMENTAL ASSURANCE (Pty)Ltd

© Environmental Assurance (Pty) Ltd. This document is protected by Copyright i.t.o. the South African Copyright Act (98 of 1978) and it may not be used, copied or otherwise reproduced without the written consent of the author or company.

Author: J.P. Nortje
Date: 23-09-2014
Coordinate system: WGS1984

