



Millenium  
Heritage  
Group (Pty) Ltd

Permit application for the exhumation and Relocation of three graves to be impacted by the Makhado Colliery, on farm Daru 889MS and Tanga 648MS within the Makhado Local Municipality of the Vhembe District, Limpopo Province



*Professor Shadreck Chirikure and Mr Ndivhuho Eric Mathoho*

## TECHNICAL SUMMARY

Property details	
Province	Limpopo
Magisterial District	Musina
Topo-cadastral map	2229 DD
Coordinates	S 22°.49'27.02" E 29°.55'.03.06
Closest town	Makhado
Farm name	Daru 889 MS & Tanga 648 MS

Development criteria in terms of Section 38(1) of the NHR Act	Yes	No
Construction of road, wall, power line, pipeline, canal or other linear form of development or barrier exceeding 300m in length		
Construction of bridge or similar structure exceeding 50m in length		
Development exceeding 5000 sq. m	Yes	
Development involving three or more existing erven or subdivisions	Yes	
Development involving three or more erven or divisions that have been consolidated within past five years		
Rezoning of site exceeding 10 000 sq. m		
Any other development category, public open space, squares, parks, recreation grounds		

Development	
Description of development	Coal Mining and associated infrastructure
Project name	Makhado Colliery
Developer	MCM Mining
Heritage consultant	Millennium Heritage (Pty) Ltd
Purpose of the study	Permit Application to relocate three burials to be impacted by the proposed development.

Land use	
Previous land use	Agriculture
Current land use	Proposed coal mining, nature reserve

# Contents

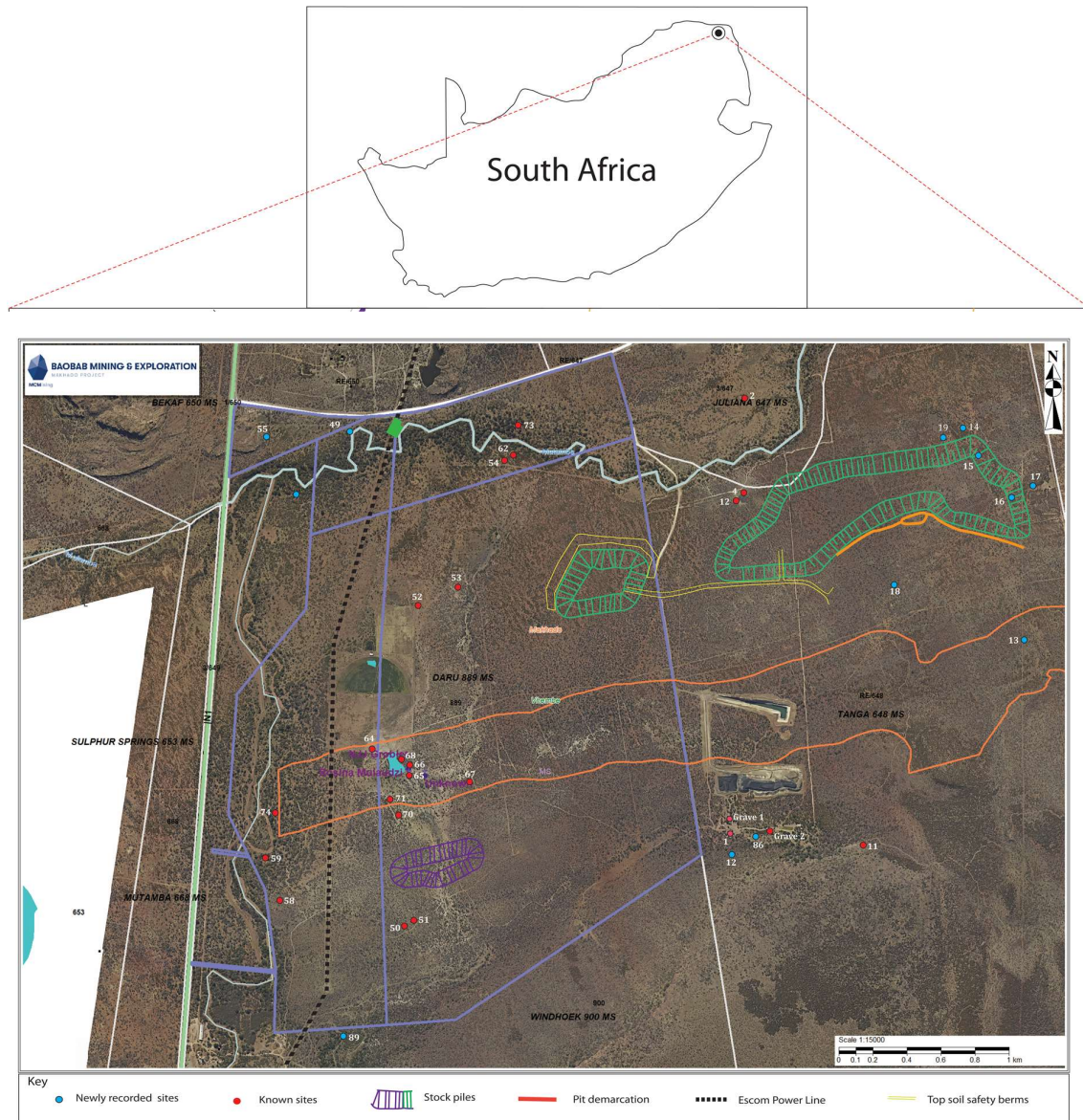
Technical Summary .....	2
Introduction .....	5
Project Description.....	6
Legislation .....	8
Approach and methodology .....	9
Descriptions of the burials .....	10
Scope of work .....	13
Grave Relocation Steps.....	14
As per the legislation: .....	17
Conclusion.....	18
References .....	18
Addendum 1: Onsite adverts .....	20
Addendum 2: Newspapers adverts and APPROVAL LETTERS.....	21

## Table of Figures

Figure 1: Shows the location of the Makhado Colliery in northern South Africa and the plan of the proposed development (orange box).....	6
Figure 2: shows the location of the burials on the western side of the farm Daru. The three burials are labelled inside the proposed mining box. A separate permit was developed to deal with other affected sites which are not burials.....	10
Figure 3: Burial of Vhengane Rosina Mulaudzi.....	11
Figure 4: Burial of J. T. Grobler .....	12
Figure 5: burial marked by calcrete stone dressings.....	13
Figure 6: Proof of onsite advert placement at different areas.....	21

## INTRODUCTION

MCM Mining obtained environmental and heritage authorizations to extract coal on the farms Daru 889MS and Tanga 648 MS (Fig 1). Known as the Makhado Colliery, this project is situated north of Makhado Town, on the foothills of the Soutpansberg range of mountains along the R525 road which goes to the Nzhelele Dam. Topographically, the site of the Makhado Colliery is characterised by calcrete outcrops, sandstone ridges and floodplains of the Mutamba River. Before exploration by MCM Mining, these farms were previously used for agriculture and cattle keeping before being converted into game farming. As part of the environmental authorization process, a heritage study was performed in 2012 (Roodt 2012) and identified several archaeological sites and three burials in an area where the West Pit of the Makhado Colliery will be located. In 2018, MCM Mining commissioned another HIA to confirm the sites identified in 2012 and to assess their condition (Chirikure and Mathoho 2018). Dr Francois Durand performed a field based palaeontological assessment of the area to be impacted by the development. The HIA processes identified burials in the proposed development footprint. These burials are in some cases associated with the former inhabitants of the farms. However, in others detailed archival research and consultation processes are essential to identify the descendants of the deceased. Burials have both tangible and intangible values and are of high significance. Because the graves will be affected by the proposed developed, they must be relocated following the provisions of the National Heritage Resources Act (1999) and the Human Tissue Act (1983) and other ancillary regulations. Given high levels of sensitivities involved, grave relocation is generally preceded by consultative and technical processes that fulfil legislative provisions and cultural requirements of the relatives of the deceased. This proposal seeks to obtain a permit to initiate and implement processes to relocate graves that will be affected by the West Pit in accordance with the law and wishes of the next of kin and traditional authorities in the area.



**Figure 1:** Shows the location of the Makhado Colliery in northern South Africa and the plan of the proposed development (orange box)

## PROJECT DESCRIPTION

The Makhado Coal Mine (Fig 1) will be an opencast mining operation, with an estimated 8.5-14 MT of ROM coal to be produced per year (Jacana 2012). The life of the mine is estimated to be 16 years. The first phase of the colliery will concentrate on the opencast pit known as the

West Pit (located on Daru889 MS and Tanga 648MS Farms). Data obtained from approved mining plans provides the extent of mining as follows:

- West Pit – 280 ha, maximum depth 120m.

In addition to the open pit, the colliery will consist of the following surface workings:

- Topsoil stockpiles;
- Overburden stockpiles (for start-up period until a wedge has been opened up in the pits so that the overburden can be used as fill);
- ROM coal storage area;
- Intermediate crusher/screening plant);
- Associated conveyors from intermediate crusher/screening plants to the processing plant;
- ROM coal processing plant (primary, secondary and tertiary crusher);
- Associated conveyors from the processing plant to the product storage areas;
- Product stockpile areas and overland conveyor to RLT on farm Tanga;
- Carbonaceous (discard) stockpile area;
- Haul roads and service roads, including a bridge over the Mutamba River;
- Earthmoving vehicle workshops;
- Clean and dirty water management infrastructure;
- Water storage structures and settling ponds;
- Water reticulation systems;
- Change houses and offices;
- Wastewater (sewage) treatment plant;
- Main entrance gate security and freight area;
- Bulk electricity supply infrastructure;
- Bulk water supply infrastructure (still to confirm);
- Bulk fuel storage facilities;
- Explosives magazine;
- Recruitment and training centre;
- Product transport infrastructure (railway line);
- Security structures and fences.

## **LEGISLATION**

### *National Heritage Resources Act of 1999*

In terms of the National Heritage Resources Act (1999) the following sections are applicable to burials which are heritage resources with intangible and spiritual values.

#### *Burial grounds and graves*

##### Subsection 36(3)

No person may, without a permit issued by SAHRA or a Provincial Heritage Resources Authority:

(c) destroy, damage, alter, exhume, remove from its original position or otherwise disturb any grave or burial ground older than 60 years which is situated outside a formal cemetery administered by a local authority; or

(d) bring onto or use at a burial ground or grave referred to in paragraph (a) or (b) any excavation equipment, or any equipment which assists in detection or recovery of metals.

Subsection 36(6) Subject to the provision of any law, any person who during development or any other activity discovers the location of a grave, the existence of which was previously unknown, must immediately cease such activity and report the discovery to the responsible heritage resources authority which must, in co-operation with the South African Police Service and in accordance with regulations of the responsible heritage resources authority-

(a) carry out an investigation for obtaining information on whether such grave is protected in terms of this Act or is of significance to any community; and



(b) if such grave is protected or is of significance, assist any person who or community which is a direct descendant to plan for the exhumation and re-interment of the content of such grave or, in the absence of such person or community, make any such arrangement as it deems fit.

#### *The Human Tissues Act (65 of 1983)*

This Act protects graves younger than 60 years. These falls under the jurisdiction of the National Department of Health and the Provincial Health Departments. Approval for the exhumation and reburial must be obtained from the relevant Provincial MEC as well as the relevant Local Authorities. Public consultation is essential in all this.

#### *Additional legislation*

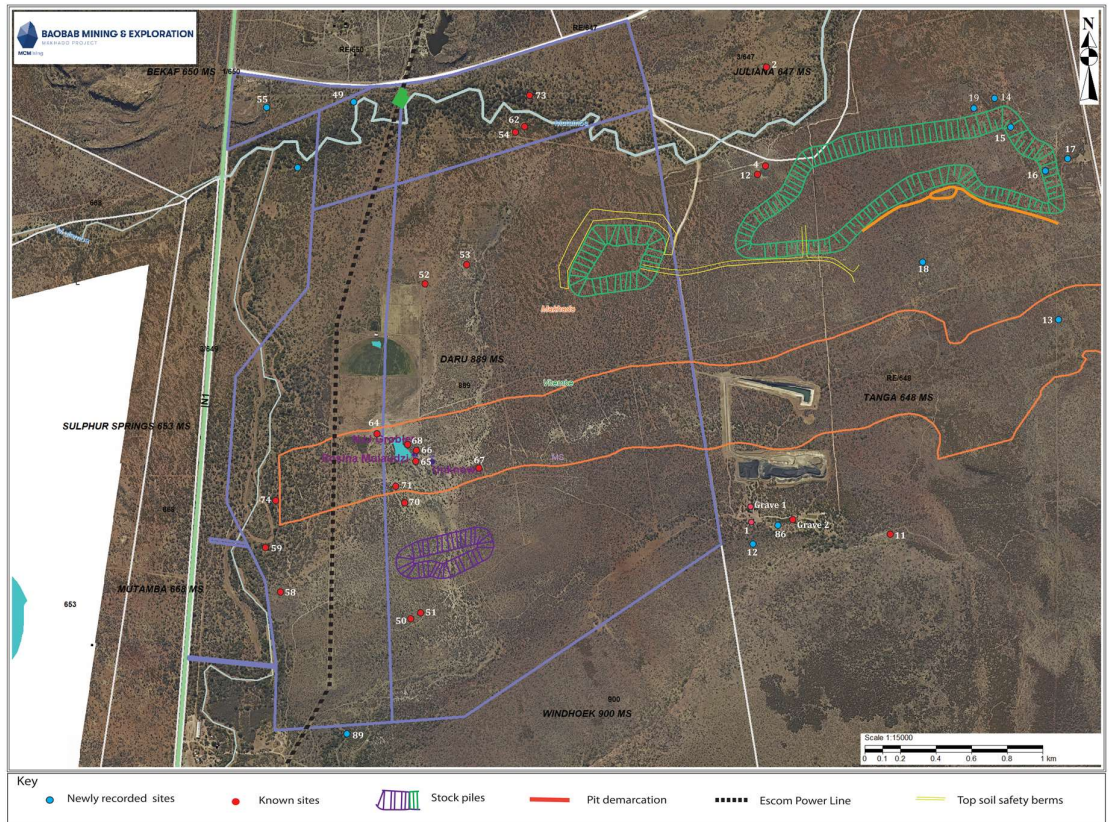
The exhumation and relocation of graves also triggers other legal instruments. These include the Health Act 61 of 2003, the Burial Ordinance of 1965 (Ordinance 18 of 1965), Ordinance on Exhumation (Ordinance no 12 of 1980, Local Authorities Notice 126, Cemetery and By-law no. 1262, Sections 42-46), Removal of Graves and Dead Bodies Ordinance (Ordinance 7 of 1925) and the Human Tissue Act (Act no 65 of 1983 as amended).

As will be highlighted below, the procedures involved in relocation and relocation of graves follow the provisions of these legal instruments.

## **APPROACH AND METHODOLOGY**

A combination of approaches was used to identify the burials as part of HIA studies (Roodt 2012; Chirikure and Mathoho 2018). This included a desktop study, followed by a consultative process involving farm workers and other residents of the farms Daru and Tanga. In the end, a field survey was performed to record the location of the burials and to estimate their date based on inscriptions on tombstones. Once located, the burials had their coordinates determined by GPS, followed by photography. A site recording form was completed which

included a general description, condition of the burials and any other observable details. The coordinates were plotted on the map of the proposed development as shown in Fig 2 below.



**Figure 2:** shows the location of the burials on the western side of the farm Daru. The three burials are labelled inside the proposed mining box. A separate permit was developed to deal with other affected sites which are not burials.

## DESCRIPTIONS OF THE BURIALS

In total, 6 burials were found during the surveys. Three of these, Sites 65, 66, and 67 are located within the mining footprint on the farm Daru 889 MS. The other ones 57, 87, and 88 are outside the development zone and will not be affected. These will be managed and conserved as part of the broader cultural heritage management programme to be developed by MCM Mining with the full participation of stakeholders. A detailed description of the sites is provided below.

Site 65: GPS S 22°.49'15.04" E 29°.53'.59.01"

This single grave is located on the western side of the West Pit. The tombstone is made of granite. As shown in Fig 3, the grave is that of Vhengane Rosina Mulaudzi who was born on 06-03-1910 and passed on 08-04-1958. The burial is now 61 years old and would fall under the provisions of the National Heritage Resources Act.



**Figure 3:** Burial of Vhengane Rosina Mulaudzi

Site 66: GPS S 22°.49'14.03" E 29°.53'.59.00"

Located on the western side of the proposed West Pit on the farm Daru, this burial is made up of a sandstone top engraved: Grobler T.J. Born 1856, date of death unknown. The inscriptions are now very faint. There is not much information available on this burial which

motivates for a detailed search to consider the history of the farms and their ownership to determine if the name cannot be traced to some of the former owners.



**Figure 4:** Burial of J. T. Grobler

*Site 67: GPS S 22°.49'15.02" E 29°.54'.02.05"*

This burial is comprised of calcrete stones that were used as grave dressings. There is no other information available. Processes of consultation are required to determine if this burial can be linked to any living descendants. The layout of the burial suggests that it may be of great antiquity.



Figure 5: burial marked by calcrete stone dressings

## **SCOPE OF WORK**

Because three burials fall within the development footprint, the recommendation from Roodt (2012) was that they must be relocated following consultation. Based on this, the aims of this proposal are to:

- To individually document the burials given the numbers Site 65, 66 and 67
- To acquire all necessary authorizations (permits) from relevant government departments such as South African Heritage Resources Agency, Limpopo heritage resource authority, Vhembe District Municipality Environmental Health section, Makhado Local Municipality and the South African Police Services for exhumation, handling of human remains and reinternments.
- To exhume and relocate the burials following legal and cultural protocols

## **GRAVE RELOCATION STEPS**

The relocation of burials follows several steps that are all complementary. These balance the requirements of the National Heritage Resources Act and the cultural practices of the families and communities associated with the graves. Informed by the provisions of the National Heritage Resources Act, the following steps will be followed:

- *Establishing the context of the burials*

According to the National Heritage Resources Act of 1999, if the burial grounds are older than 60 years and are situated outside a formal cemetery administered by a local authority the provisions of the act apply. This is the case with the burials on the proposed development. Based on the provisions of Section 36(3b) it is important to establish if the burial site or graves are of a victim of conflict or not. Again, these three burials fall outside this.

- *Determining the age of the burials*

The National Heritage Resources Act gives a distinction between burials older and younger than 60 years. If the graves are younger than 60 years, this triggers the provision of Section 2(1) of the Removal of Graves and Dead Bodies Ordinance (Ordinance no. 7 of 1925) as well as the Human Tissues Act (Act 65 of 1983) and to the local, regional municipality by laws. In cases of graves younger than 60 years, an undertaker must be contracted to deal with the exhumation and reburial. This will include public participation, organizing cemeteries, coffins, and so on. A provision must also be left for the performance of cultural practices by the families and communities. Permits are required to perform this work.

However, should the graves be older than 60 years old or of undetermined age, the National Heritage Resources Act of 1999 states that an archaeologist must be in attendance to assist with the exhumation and documentation of the graves.

The identified graves are all 60 years and older and by law this triggers the provisions of the National Heritage Resources Act. The Mulaudzi grave is associated with numerous living descendants and therefore requires a culturally sensitive approach.

- *Identification of the families and relatives of the descendants*

The second most important step is to identify the descendants of the deceased over a period of 60 days as allowed for by the National Heritage Resources Act of 1999. This process of identification will be comprised of the following:

*(a) Archival and documentary research*

Archival and documentary searches must be performed to identify the descendants and family member of the deceased or any other person/ community by tradition concerned with such graves or burial grounds. The grave of J. T Grobler will require a dedicated search at the deeds office to identify the history of farm ownership in the area. This may assist in the identification of next of kin in addition to the above.

*(b) Direct consultation with local community*

In harmony with South African statutory requirements, a community consultative process was undertaken led by MC Mining representative Florence Duval. Descendants of the Mulaudzi Family members were traced to be residing at nearby Ha- Matsa and Ha- Mudimeli Villages. An initial consultative meeting with the Mulaudzi family members was held on the 05 May 2019 at Makhado town (see attached minutes). At this meeting the proposed Coal mining project including its phases and implementation strategies were relayed to the affected family. Consequently, the purpose of the meeting was to discuss the future of three graves that fall within the West Pit development corridors which will be affected by the proposed coal mining activities. They were given enough time to consult with other family members mostly those who work in Gauteng Province. The main aim of this was to reach a decisive agreement among Mulaudzi family so that they collectively could provide family permission to Mc Mining to start with permit application processes. The second Meeting was held on the 13<sup>th</sup> June 2019 at 139 Munnik Guest house, Makhado town. During this meeting, Mulaudzi family gave a verbal

consent (minutes attached as a supporting document to this application) giving permission to proceed with the proposed permit application for the exhumation and reinternment of their beloved family member. Subsequently they further suggested that the remains of Mrs Vhengane Rosina Mulaudzi to be reburied at Ha- Matsa village local cemetery in the Nzhelele Valley where other family members have been laid to rest.

*(c) Placement of notices in local newspapers and or local radio*

By law notices of the intention to relocate must be put up for a period of 60 days. The notice will have information where families and communities can contact the developer/archaeologist/public-relations officer/undertaker. The notices need to be in at least 2 languages, English, and vernacular in the province. If the names are written on headstones, they must be mentioned in the public notices to be posted on or near the proposed development. The advertisement must also have information on the proposed development and must contain telephone numbers and address at which the applicant can be contacted by any interested person and the date by which contacts must be made, which must be at least 7 days after the end of the period of erection of the notice. The published list would call on the relative of the deceased to react within a certain period to claim the remains for reinternment.

*(d) Identification of alternative burial grounds*

During the 60 days when notices are put up, a suitable cemetery must be identified close to the development area or otherwise one specified by the family of the deceased. An open day for family members should be arranged after the period of 60 days so that they can gather to discuss the way forward, and to sort out any problems. The developer needs to take the families requirements into account. This is a requirement by law.

*(e) Permit application to SAHRA*

Upon the lapse of the 67 days period, and once all information from the family members has been received, a permit application can be made to SAHRA.



*(f) Exhumation and graves relocation*

Once the permit has been received from SAHRA, exhumations may begin. This follows steps below:

*i. Documentation*

The exhumation of any human remains is preceded by historical and archaeological report and a complete recording of original location, layout, appearance and inscriptions by means of drawings and photographs. This record will be archived for future research.

*ii. Exhumation*

The process of exhumation must be conducted by a qualified Professional Archaeologist as stipulated in the permit. The responsibilities of the archaeologist include guiding the process, identification, classification and onsite analysis and recording of grave goods and remains. All accompanying grave goods including tombstones must be part of the new burial.

*iii. Reburial*

The remains from each grave will be placed in an individual casket or other suitable container, permanently marked for identification. Also, the site, layout and the design of the area for reinternment should consider the historical and culture associated with, and the design of, the original grave or grave yard. The remains from each grave is buried individually and marked with grave marker and surrounds. Cultural ceremonies may be performed as part of the process.

**AS PER THE LEGISLATION:**

- *A first newspaper advert for the two unknown graves was placed on the Limpopo Mirror Newspaper and went out on the 9<sup>th</sup> and 16 of August 2019 (see separate attachment).*

- onsite advertisement was placed on the 19<sup>th</sup> of August 2019 at different locale this includes the farm gates, at the grave site and at public places such as Mphephu Traditional Council offices (Dzanani) (see attached photographs)
- Subsequent second advert was placed on the Zoutpansberger of the 11 and 18<sup>th</sup> of October 2019.

Note: No written consent or objections were received within the advert window period

## **CONCLUSION**

In conclusion, the process of grave relocation requires consultation from the start to end considering the legal requirements. The graves must be properly documented to include site descriptions and location. The exhumation must be done in a professional and complete manner. The reburial process must include the participation of descendants.

## **REFERENCES**

- Antoinetes, A.2014.Glass beads from Mutamba: Pattern of consumption in the thirteenth century Southern Africa, Dept of Anthropology and Archaeology, University of Pretoria.
- Deacon. 1996. *Archaeology for Planner, developers and Local Authorities*. National Monuments Council. Publication no.P021E
- Deacon, J.1997. *Report: Workshop on Standards for the assessment of significance and research Priorities for Contract Archaeology*. In: Newsletter No 49, Sept 1998. Southern African Association of Archaeologist
- Deacon, H.J. and Deacon, J., 1999. *Human beginnings in South Africa: uncovering the secrets of the Stone Age*. Rowman Altamira.
- De Vaal, J. B. 1943.n Soutpansbergse Zimbabwe. *South African Journal of Science*, Vol. 40: pp 303-22

- Esterhuysen, A., 2007. The Earlier Stone Age. In Bonner, P., Esterhuysen, A., Jenkins, T. (eds.): *A Search for Origins: Science, History and South Africa's (Cradle of Humankind)*, Johannesburg: Wits University Press. Pg 110 -121.
- Forssman, T.R., 2011. *The Later Stone Age occupation and sequence of the Mapungubwe landscape* (Doctoral dissertation).
- Huffman, T.N. 2007. *Handbook to the Iron Age. The archaeology of Pre-colonial farming societies in Southern Africa*. University of Kwazulu –Natal Press
- Loubser, J.H.N. 1989. Archaeology and early Venda History. *South African Archaeological Society Goodwin Series*, Vol 6, pp54-61
- Loubser, J.H.N. 1991. *The Ethno archaeology of Venda-speaker in Southern Africa*. Navorsinge van die Nasionale museum, Bloemfontein 7(8)145-464
- Maggs, T. M. 1980a. The Iron Age sequence south of the Vaal and Pongola rivers: some historical implications. *Journal of African History* 21: 1-15.
- Klein, R. G. (2000). The Earlier Stone Age of southern Africa. *The South African Archaeological Bulletin*, 107-122.
- Kuman, K., Gibbon, R.J., Kempson, H., Langejans, G., Le Baron, J.C., Pollarolo, L. and Sutton, M., 2005. Stone Age signatures in northernmost South Africa: early archaeology of the Mapungubwe National Park and vicinity. *From tools to symbols: From early Hominids to modern Humans*, pp.163-183.
- Philipson, D.W. 1993. *African archaeology*, Cambridge University Press
- Philipson, D.W. 2005. *African archaeology*, Cambridge: 3<sup>rd</sup> edition, Cambridge University Press
- Prinsloo, H. P. 1974. Early Iron Age site at Klein Africa. Wyliespoort, Zoutpansberg Mountains, South Africa. *South African Journal of Science*. 70. pp 271-273.
- Sumner, T. A., & Kuman, K. (2014). Refitting evidence for the stratigraphic integrity of the Kudu Koppie early to middle Stone Age site, northern Limpopo Province, South Africa. *Quaternary International*, 343, 169-178.
- SAHRA, 2005. *Minimum Standards for the Archaeological and the Palaeontological Components of Impact Assessment Reports*, Draft version 1.4.
- Roodt, F. 2011. *Preliminary Phase 1: Heritage Impact Assessment Report. Makhado opencast mine* Vhembe District municipality, Limpopo.

Roodt, F.2012.Phase 1: *Heritage Impact assessment report for the proposed Makhado colliery integrated Report for the: Opencast mine and infrastructure, bulk power supply, off site transport and Railway line and siding*, Vhembe district Municipality.

Wadley. L., 2007. The Middle Stone Age and Later Stone Age. In Bonner, P., Esterhysen, A., Jenkins, T. (eds.): *A Search for Origins: Science, History and South Africa's 'Cradle of Humankind'*. Johannesburg: Wits University Press. Pg122 -135.

## **ADDENDUM 1: ONSITE ADVERTS**



Figure 6: Proof of onsite advert placement at different areas

**ADDENDUM 2: NEWSPAPERS ADVERTS AND APPROVAL LETTERS**



All persons having claims against the above-mentioned estate are requested to lodge their claims within thirty (30) days of publication hereof. Dated and Signed at Thohoyandou on this the 05th of August 2019.

**ADVOCATE TC MUMYAL**  
Thohoyandou, 1st Floor Office No 9 / Dr GRM Mathivha Surgery Complex, Office no 2, adjacent to Shoprite Sibasa. Tel: 076 608 2083 / 067 035 2114  
Ref: Ady Mumyal

**BANDAB MINING & EXPLORATION**

**NOTICE OF INTENT TO RELOCATE TWO GRAVES (KNOWN AND UNKNOWN) AFFECTED BY THE PROPOSED COAL MINE DEVELOPMENT ON FARM WINDHOEK 649MS WITHIN THE MAKHADO LOCAL MUNICIPALITY OF THE VHEMBE DISTRICT, LIMPOPO PROVINCE, SOUTH AFRICA.**

Notice is given in terms Sections 35 and 36 of the National Heritage Resources Act (Act 25 of 1999) (read with the Regulations published pursuant thereto (GNR 548 of 2 June 2000)) section 2 (1) of the Removal of Graves and Dead Bodies Ordinance (Ordinance No.7 of 1925) (read with the Regulations published pursuant thereto (GNR.363 of 22 May 2013)), Burial Ordinance, 1965 (Ordinance 18 of 1965) as

Sunset Avenue, Lonehill, 2151.  
Tel: +27 10 003 8000  
Email: florence.duval@mcmining.co.za

**BANDAB MINING & EXPLORATION**

**NDIVHAZDO YA MUHUMBULO WA U PFULUSA MAVHIDA MAVHILI (U DIVHEAHO NA U SA DIVHE) A KWAMEAHO NGA MUGODI WA MALASHA UNE WA KHOU FANELA U SHUMIWA KHA BULASI I NGO PFI WINDHOEK 649MS KHA MASIPALA WAPO WA MAKHADO KHA TSHITIRIKI TSHA VHEMBE, VUNDUNI LA LIMPOPO, AFURIKA TSHIHEMBE.**

Ndivhazdo iyi i khou itwa ho lavhelewa tshenwa tsha 35 na 36 tsha National Heritage Resources Act (Act 25 ya 1999) (wo vhalwaho ho lavhelewa maga o andadzvaho kha (GNR.548 ya dzi 2 Fulwi 2000)) tshenwa tsha 2 (1) tsha mulayo wa Removal of Graves and Dead Bodies (Ordinance No.7 ya 1925) (yo vhalwaho ho lavhelewa maga o andadzvaho malugana na (GNR.363 ya dzi 22 Shundunthule 2013)).

Mulayo wa Mbulungano wa 1965 (Mulayo wa vhu 18 wa 1965) kathihl na Human Tissue Act (Act 63 ya 1983) na Kulungulele ku yelanaho na zwa u tshimbidzwa ha masalela a vhafu sa zwe zwa sumbedziswa nga National Health Act, 2003

**DECENT DEVELOPMENT PROJECT**

**NOTICE OF ENVIRONMENTAL IMPACT ASSESSMENT Scoping phase**

Notice: Notice is hereby given in terms of Regulation 41(2)(c)(i) of the regulations published in the Government Notice No: 984 under Chapter 6 of the National Environmental Management Act 109 of 1998 of the intention by Hlenglunglhi Trading to construct a 2500 residential sites, Shopping Mall, Offices, Two Petrol Filling Stations & a Golf Course near Giyani (Xikukwani) along R81 road on Farm Greater Giyani 891 LT. The new site will be called Giyani Extension within Greater Giyani Local Municipality of Mopani District, Hlenglunglhi Trading appointed Decent Development Project Pty Ltd to undertake the EIA process for the proposed project.

**Project Description:** The proposed development entails the establishment of a a 2500 residential sites, Shopping Mall, Offices, Two Petrol Filling Stations & a Golf Course near Giyani (Xikukwani) along R81 road on Farm Greater Giyani 891 LT. The total size of the proposed area will be 250 ha of land.

EAP: DECENT DEVELOPMENT PROJECT (Pty) Ltd has been appointed

objection to the approval of this consent use application must lodge such objection, together with the grounds thereof, with the office of the Town Planner, Makhado Local Municipality (Private Bag X2596, Makhado, 0920) and the undersigned, in writing not later than: 18 September 2019

Enquiries: Khongoloti Consultant cc, PO Box 1950, Brooklyn Square 0075. Tel: 012 460 4755 Fax: 012 460 4761 / 072 404 7447 Email: khongoloti@absamail.co.za

Ref Makhabela BS139426 Eng 08/08/19

MASIPALA WA MAKHADO CLAUSE 22 OF THE MAKHADO LAND USE SCHEME, 2009

XITIVISO XI VIKIWA KU YA HI XYENGE YA 22 XA MAKHADO LAND USE SCHEME, 2009.

LESWAKU HINA VA TIRHI VA KHONGLOTI PTY LTD HI KOMBELA PFUMELELO WA KU ENDLA HIGH MAST EKA PURASI RA: THE REMAINING EXTENT OF THE FARM WATERVAL 45 LT SWILAVEXO HINKWASWO SWA XIKOMBELO SWII KONA KU XIKWYIWA HI NKARI WA NTRHO EKA TIHOFISI TA VAPULANI VA DOROBA MAKHADO LOCAL MUNICIPALITY PRIVATE BAG X2596, LOUIS TRICHARDT, 0920 HI NKARI WA MASIKU YA 28 KU SUKELA HI SIKU RA TI 18 TA NHWETI YA SEPTEMBER 2019 MINKANETO KUMBE MAVONLELO WOYELANA

Any person having an objection to the approval of this consent use application must lodge such objection, together with the grounds thereof, with the office of the Town Planner, Makhado Local Municipality (Private Bag X2596, Makhado, 0920) and the undersigned, in writing not later than: 18 September 2019

Enquiries: Khongoloti Consultant cc, PO Box 1950, Brooklyn Square 0075. Tel: 012 460 4755 Fax: 012 460 4761 / 072 404 7447 Email: khongoloti@absamail.co.za

Ref Ha Mashamba BS149011 Eng 08/08/19

MASIPALA WA MAKHADO CLAUSE 22 OF THE MAKHADO LAND USE SCHEME, 2009

Ufhatwa ha thawara ya Vodacom

Nga mulawo wa tshipida tsha clause 22 tsha Makhado Land Use Scheme, 2009. Ndivhazdo i khou fhiwa rine vha Khongoloti u divhazda Masipala wa Makhado i khumbelo ya Special Consent u ita ndivhazdo: U fhatwa ha thawara ya Vodacom.

Kha shango la muvhuso: THE REMAINING EXTENT OF THE FARM RIVERSDALE 75 LT Zwidodombedzwa zwa ndivhazdo zwianga vhudziswa gandronori ya: Khongoloti Consultant cc, 373 Melkstraat, Nieuw Muckleneuk, 0181, Pretoria

of this cons application such objection with the of Town Planr Local Muni Bag X611, I and the un writing not 09 Septem Enquiries: Consultant Brooklyn S Tel: 012 46 460 4761, Email: kxo absamail.c

**KK CONE**  
(Ref Sakad 30/08/19)

MASIPALA CLAUSE 21 MUSINA I SCHEME, NDIHVHAD ha thawar Nga mula tsha claus Musina Ia 2010. Nd fhiwa rint u divhadt wa Musin ya Special ndivhazdo U fhatwa Vodacom kha shan Remainin Farm The Zwidodo zwa ndivhudzisiy Khongol 373 Melk Mucklen Pretoria Muthu rane a sa ndivhant

To advertise your vacancy or tender on this page, contact us on 011 461 1111

**TENDERS / VACANCIES**

9 August 2019



Laerskool Messina het op 1 Oktober hul Top 5 akademiese presteerders in elke graad aangewys ná afloop van die derde skoolkwartaal. Almal van hulle het 'n gemiddeld van bo 80% verwerf. Die Top 5 leerlinge in Graad 7 was (van links na regs) Sereca Pretorius, Geané Anderson, Shaista Alam, Zian Grobler en Micaela Evans. *Foto verskaf.*



Laerskool Messina se Top 5 akademiese presteerders in Graad 6 ná afloop van die derde skoolkwartaal was (van links na regs) Jessica Malungane, Tehya Stevens, Julia Polley, Thando Ndiweni en Buhle Ndiweni. *Foto verskaf.*



Afgeneem is Laerskool Messina se Top 5 akademiese presteerders in Graad 5 ná afloop van die derde skoolkwartaal. Van links na regs is Brent Vorster, Daniël Landsberg en Larah Hodgson (gelyk tweede volgens punte), Cesca Nel en Dedrei Pretorius. *Foto verskaf.*



Hierdie groep leerlinge is Laerskool Messina se Top 5 akademiese presteerders in Graad 4 ná afloop van die derde skoolkwartaal. Van links na regs is Jonea Pretorius, Adriaan Smit, Jack Polley, Aiden Erasmus en Joshua Mudzongo. Jack en Aiden was gelyk derde volgens punte. *Foto verskaf.*



Louise Dekker van Hoërskool Louis Trichardt het op 28 September deelgeneem aan die Nasionale Perdespringkampioenskappe wat by die Misty Meadows Equestrian Estate in Bronkhorstspuit plaasgevind het. Sy het 'n sesde plek in die 1.20 meter perdespring-kategorie behaal.

**DEPRESSIEF  
MOEDELOOS  
DESPERAAT**  
**Ons kan help**

## Zoutpansberger

Published by Zoutnet CC, trading as Zoutpansberger and printed by D Brits, Jeppe Street 1, Louis Trichardt.

**POSTAL ADDRESS / POSADRES**  
PO Box / Posbus 1680, Louis Trichardt, 0820

**TELEPHONE / TELEFOON:**  
Louis Trichardt: (015) 516 4996/7  
Louis Trichardt fax (015) 516 2303

**E-MAIL / E-POS:**

Advertising / Advertensies: george@zoutnet.co.za  
Editor / Redakteur: anton@zoutnet.co.za  
Administrative / Administratief: anton@zoutnet.co.za  
Website / Webtuiste: http://www.zoutnet.co.za

**NEWS / NUUS:**

**News Editor / Nuusredakteur:**  
Andries van Zyl (015) 516 4996/7  
**Reporter**  
Veruscka van der Linde (015) 516 4996/7

**ADVERTISING / ADVERTENSIES:**

George Janse van Rensburg 082 419 2359  
Zander Goedhals 064 687 8521  
Classified/Legal Notices: (015) 516 4996/7

**DISTRIBUTION / VERSPREIDING:**

The newspaper is distributed by Far North Media Distributors. Any queries regarding distribution can be directed to George Janse van Rensburg (082 419 2359)

Zoutpansberger publication subscribes to the South African Press Code that prescribes news that is truthful, accurate, fair and balanced. If we don't live up to the standards set in the Code, please feel free to contact the editor at the numbers provided above.

# ZOUT CLASSIFI

## TE HUUR

## TE HUUR

2 Slaapkamer woonstel. Diree vriendelik. 6km uit op die Elim pad geleë. R4 200 p.m. Koopkrag.

Whatsapp asb: 078 378 5486

## LEGALS

### BAOBAB MINING & EXPLORATION

NOTICE OF INTENT TO RELOCATE TWO GRAVES (KNOWN AND UNKNOWN) AFFECTED BY THE PROPOSED COAL MINE DEVELOPMENT ON FARM WINDHOEK 649MS WITHIN THE MAKHADO LOCAL MUNICIPALITY OF THE VHEMBE DISTRICT, LIMPOPO PROVINCE, SOUTH AFRICA. Notice is given in terms Sections 35 and 36 of the National Heritage Resources Act (Act 25 of 1999) (read with the Regulations published pursuant thereto (GNR 548 of 2 June 2000)); section 2 (1) of the Removal of Graves and Dead Bodies Ordinance (Ordinance No.7 of 1925) (read with the Regulations published pursuant thereto (GNR 363 of 22 May 2013)), Burial Ordinance, 1965 (Ordinance 18 of 1965) as well as the Human Tissue Act (Act 65 of 1983) and Regulations relating to the manage-

ment of human remains as set-out by the National Health Act, 2003 (Act 61 of 2003) as well as the relevant local and the district By-laws that govern graves exhumation and reinterment of human remains. These two graves will be affected by the proposed west pit coal mine development on farm Windhoek 649MS. One of the graves is located at (GPS S22°49'14,03" & E 29°53'59,00") indicated by a single sandstone engraved: Grobler, N. J. J Born 1856, date of death unknown. The second is an unknown grave located at (GPS S22°49'15,02" & E 29°54'02,05") indicated by oval parked calcrete stones as grave dressings. Dates of these graves is unknown. To be registered/ identified as the interested/ affected parties, including all persons and communities descended from the buried individuals, all persons or communities concerned or who have interests with the graves can submit written comments/ objections to Baobab Mining and Exploration (Pty) Ltd by no later than 29 October 2019 – i.e. 67+ days after the notice is published]. Florence Duval, Group Corporate Affairs Manager, MC Mining Limited, South Block, Summercon Office Park, Cnr Rockery Lane and Sunset Avenue, Lonehill, 2191. Tel: +27 10 003 8000 Email: Florence.Duval@mcmining.co.za

vhalwaho ho lahveleswa maga o andadzawo kha (GNR.548 ya dzi 2 Fulwi 2000); tshitenwa tsha 2 (1) tsha mulayo wa Removal of Graves and Dead Bodies (Ordinance No.7 ya 1925) (yo vhalwaho ho lahveleswa maga o andadzawo malugana na (GNR.363 ya dzi 22 Shundumthule 2013). Mulayo wa Mbulungano wa 1965 (Mulayo wa vhu 18 wa 1965) kathihi na Human Tissue Act (Act 65 ya 1983) na Kulungulele ku yelanaho na zwa u tshimbidzwa ha masalela a vhafu sa zwa zwa sumbedziswa nga National Health Act, 2003 (Act 61 ya 2003) kathihi na minwe milayo yapo na ya tshitiriki i langulaho zwa u gwelulwa na u vhlungwaha hafu ha masalela a vhafu. Haya mivhida mavhili a do kwamea nga mulindi wa handela ya mugodi ure vshukhela kha bulasi ya Windhoek 649MS. Linwe la ayo mavhida li fhala kha (GPS S22°49'14,03" na E 29°53'59,00") lo vheva tombo lithili li la mutavha, lo nwalwaho uri: Grobler, N.J.J o bebwa nga 1856, hone datumu ya lufu a divhehi. La vhuvhili a li divhehi. Li khou wanala kha (GPS S22°49'15,02" na E 29°54'02,05") henefho ho vheva zwiga zwa matombo o itaho magumba ntha ha vhalalo. Datumu dza vshukela halo a divhehi. U di nwalisela kana vha tshi pfa uri vha nga vha vha munwe wa avho vha kwameaho nga ayo mavhida, zwi tshi katela na vhatu vhothe kana zwitshavha zwothe zwi kwameaho, vha nga disa vshupfiwa havho kana khandzo/ u sa fushea havho ho to nwalwaho kha Baobab Mining and Exploration (Pty) Ltd hu saathu u fhela maduvha a 67 iyi ndivhadzo yo andadzwa. (29 October 2019) Florence Duval, Group Corporate Affairs Manager, MC Mining Limited, South Block, Summercon Office Park, Cnr Rockery Lane and Sunset Avenue, Lonehill, 2191. Tel: +27 10 003 8000 Email: Florence.Duval@mcmining.co.za

### COXWELL STEYN VISE & NAUDE

KENNISGEWING IN TERME VAN ARTIKEL 35(5) VAN WET NR 66 VAN 1965 BOEDEL WYLE: HERMINA FOGWELL. ID NO: 390226 0044 080. LAASTE ADRES: GODEDELTE 46 VAN DIE PLAAS LEVUBU 15. DATUM VAN AFSTERWE: 2018/08/15. BOEDEL: NOMMER: 1979/2018 (THOHOYANDOU) Kennis word hiermee gegee ingevolge Artikel 35(5) van Wet nr. 66 van 1965 dat die Likwidasie en Distribusierekening in bogemelde boedel ter insae sal lê te die kantore van die Meester van Thohoyandou en die Landdroskantoor te Louis Trichardt vir 'n tydperk van 21 (een-en-twintig) dae vanaf datum van publikasie hiervan naamlik 11 Oktober 2019. GEMAGTIGDE AGENT: JF STEYN, COXWELL, STEYN, VISE & NAUDE ING. SONGOZISTRAT 31, POSBUS 52, LOUIS TRICHARDT, 0920 E-POS: legal4@csvn.co.za TEL: (015) 516 0116 FAKS: (015) 516 3055 JF STEYN/AS/FOG9/1

### FRANCES TAYLOR

SPECIAL CONSENT ADVERT MAKHADO MUNICIPALITY SPATIAL PLANNING, LAND DEVELOPMENT AND LAND USE MANAGEMENT BY-LAW 2016. I, Frances Taylor, being the Authorized Tenant of the owner of stand number 1851 Louis Trichardt, Ext. 2, hereby give notice in terms of Section 93(1) and 95 of Makhado Spatial Planning, Land Development and Land use Management By-Law, 2016 that I have applied to Makhado Municipality for special consent in terms of Section 75 of the said law, and Clause 22 of the Makhado Land Use Scheme 2009, for Place of Instruction on Erf 1851 Louis Trichardt, Ext. 2, situated at 71 Kameel Street. Particulars of the application will lie for inspection during normal office hours at the Acting Director: Development Planning Office or Town Planning Office, ground floor DDP Building, Makhado Local Municipality, for a period of 28 days from 11 October 2019 which is date of first publication of this notice.

NDIVHADZO YA MUHUMBULO WA U FULUSA MAVHIDA MAVHILI (LI DIVHEHO NA LI SA DIVHEI) A KWAMEAHO NGA MUGODI WA MALASHA UNE WA KHOU FANELA U SHUMIWA KHA BULASI I NO PFI WINDHOEK 649MS KHA MASIPALA WAPO WA MAKHADO KHA TSHITIRIKI TSHA VHEMBE, VUNDUNI LA LIMPOPO, AFURIKA TSHIPEMBE. Ndivhadzo iyi i khou itwa ho lahveleswa tshitenwa tsha 35 na 36 tsha National Heritage Resources Act (Act 25 ya 1999) (wo

## General Manager: Macadamia & Av

We have a position available in the Elim area of the Limpopo Province for energetic person that have the ability and knowledge to manage the corr tions, including a nursery on the farm in a cost effective way, to optimise including the management of people, to ensure maximum fruit production

**KEY PERFORMANCE AREAS:**

- Monitor execution of all orchard management practices by subordina activities and ensure that all tasks are performed to acceptable stanc
- Determine pest, insect and disease status and report to the MD and Interpret and ensure the correct execution and monitoring and report
- Responsible for irrigation scheduling and effective application of water maintenance of irrigation equipment.
- Responsible for all picking activities and responsible for annual crop
- Responsible for workshop, fruit processing and packaging, administ
- Responsible to maintain discipline and performance standards, deal other labour relations matters and determine labour requirements an levels

Please send 3 page CV to recruitment@tanafica.co.za (closing date





Ref: VDM 16/20/R  
Enq: MUKWEVHO NM  
Cell: 0832763649

---

**TO : MILLENNIUM HERITAGE CONSULTANTS**

**FROM : COMMUNITY SERVICES DEPARTMENT**

**DATE : 08 OCTOBER 2019**

**SUBJECT : NOTICE OF EXHUMATIONS AND REINTERMENT**  
**OF THREE GRAVES AT WINDHOEK 649MS (MAKHADO)**

---

**PURPOSE:**

To comment on notice of exhumation and reinterment of the three graves of Mr Grobler N.J, Mrs. Mulaudzi within coal mine development on farm Windhoek 649MS within the Makhado Local Municipality of Vhembe District Municipality and the one unmarked.

**DISCUSSIONS:**

Environmental Health Services has looked to all issues which will give health impact to the community. i.e. noise, air quality, pollution, heritage impacts, water supply, waste disposal etc. and satisfied that it will be properly handled.

**RECOMMENDATIONS:**

Proposed exhumation must comply with following Act or regulations(National Heritage Resources Act or management of the mortal remains depending on the years of the grave) . We don't object to the exhumation and reburial of the above mentioned three graves.

Hoping that you will find this in order

Yours faithfully

**Mukwevho Michael Nngodiseni (Manager Municipal Health Services)**



LIMPOPO HERITAGE RESOURCES AUTHORITY  
21 Biccard Street, Polokwane, 0700

DATE: 10 October 2019  
ENQUIRIES: Ravhugoni V.P.

YOUR REF:  
OUR REF: 19/10/01-BG

**Attention: Millenium Heritage Group (PTY) LTD**

**P.O. Box 456  
Ladanna  
0704**

Email: [mathohoe@gmail.com](mailto:mathohoe@gmail.com)

**Tel: 015 291 4919  
Cell: 071 870 6947  
Fax: 015 291 4919**

Dear Sir

**RE: RELOCATION OF THREE GRAVES TO BE IMPACTED BY THE MAKHADO  
COLLIERY, VHEMBE DISTRICT MUNICIPALITY, LIMPOPO PROVINCE**

The above report has reference:

MCM Mining obtained environmental and heritage authorisation to extract coal on the farms Windhoek 649 MS and Tanga 648 MS situated north of Makhado Town.

Heritage study was conducted in 2012 by Roodt where several archaeological sites and burial site were identified.

Another HIA was commissioned in 2018 to confirm the sites identified in 2012 and assess their condition.

PIA was conducted by Dr Durand to assess the impact that might occur by the proposed development.

The HIA process identified six burials in the proposed development footprint. Three of these sites i.e. 65, 66, 67 are located within the mining footprint on the farm Daru 889 MS. Sites 57, 87 and 88 are located outside the development zone and will not be affected.

Burials which were recorded are associated with former inhabitants.

Detailed archival research and broad consultation processes are essential to identify the descendants of the deceased.

A single marked grave which is older than 60 years located on the western side of the West Pit is registered as Vhengani Rosina Mulaudzi.

Another grave made from sand stone engraving is marked as Grobler T.J. is located on the western side of the proposed West Pit on farm Windhoek. No much information about this burial as the inscription is faint.

→ In terms of the NHRA no 25 of 1999 sec 36 no one must destroy, move, excavate, exhume or relocate human remains older than 60 years without the permit application from SAHRA and the Provincial Heritage Resources Authority.

**Following are the recommendations:**

- It is recommended that the affected burials be relocated.
- Other relevant government departments must be contacted for authorizations to be obtained.
- For further recommendations, it is important that SAHRA is notified about the above discovery, this office will support the recommendations made specialist.
- Should heritage resources of any nature including archaeological sites be uncovered during future development, LIHRA and a professional Heritage specialist must be contacted immediately.

Yours sincerely



HERITAGE SPECIALIST: HIA ADVISORY COMMITTEE

10-10-2019

DATE