

Exemption from a Phase 1 Heritage Impact Assessment for a proposed new installation of pipeline section next to the Bloemspruit bridge crossing at the M10 road, Bloemfontein, Free State Province*.

Site: Bloemspruit bridge crossing, M10 road, Bloemfontein.

Map Ref.: 2926 AB Maselspoort

Site Coordinates: 29° 7'17.12"S 26°16'0.04"E

MDA Environmental Consultants requested a heritage impact assessment for an area demarcated for the installation of a section of water pipeline crossing the Bloemspruit next to the M10 road south of Bloemfontein (**Fig. 1**). The site is underlain by at depth by potentially fossil-bearing Beaufort Group (Adelaide Subgroup) strata capped by thick deposits of geologically recent (Quaternary) alluvial sediments flanking the Bloemspruit (**Fig. 2 & 3**).

After a brief walk-through, it was established that the site has been severely disturbed by previous earthmoving activities (**Fig. 4**). Potential archaeological impact resulting from the proposed development is considered non-existent due to the disturbed nature of the area. The soil overburden is not palaeontologically vulnerable and the likelihood of palaeontological impact on *in situ* bedrock sediments is considered to be low.

It is recommended that the proposed development is exempted from a Phase 1 heritage impact assessment.

* Report prepared for MDA Environmental Consultants PO Box 20298, Willows 9320 by L. Rossouw, National Museum Bloemfontein, c/o Aliwal and Charles Street, Bloemfontein 9300.

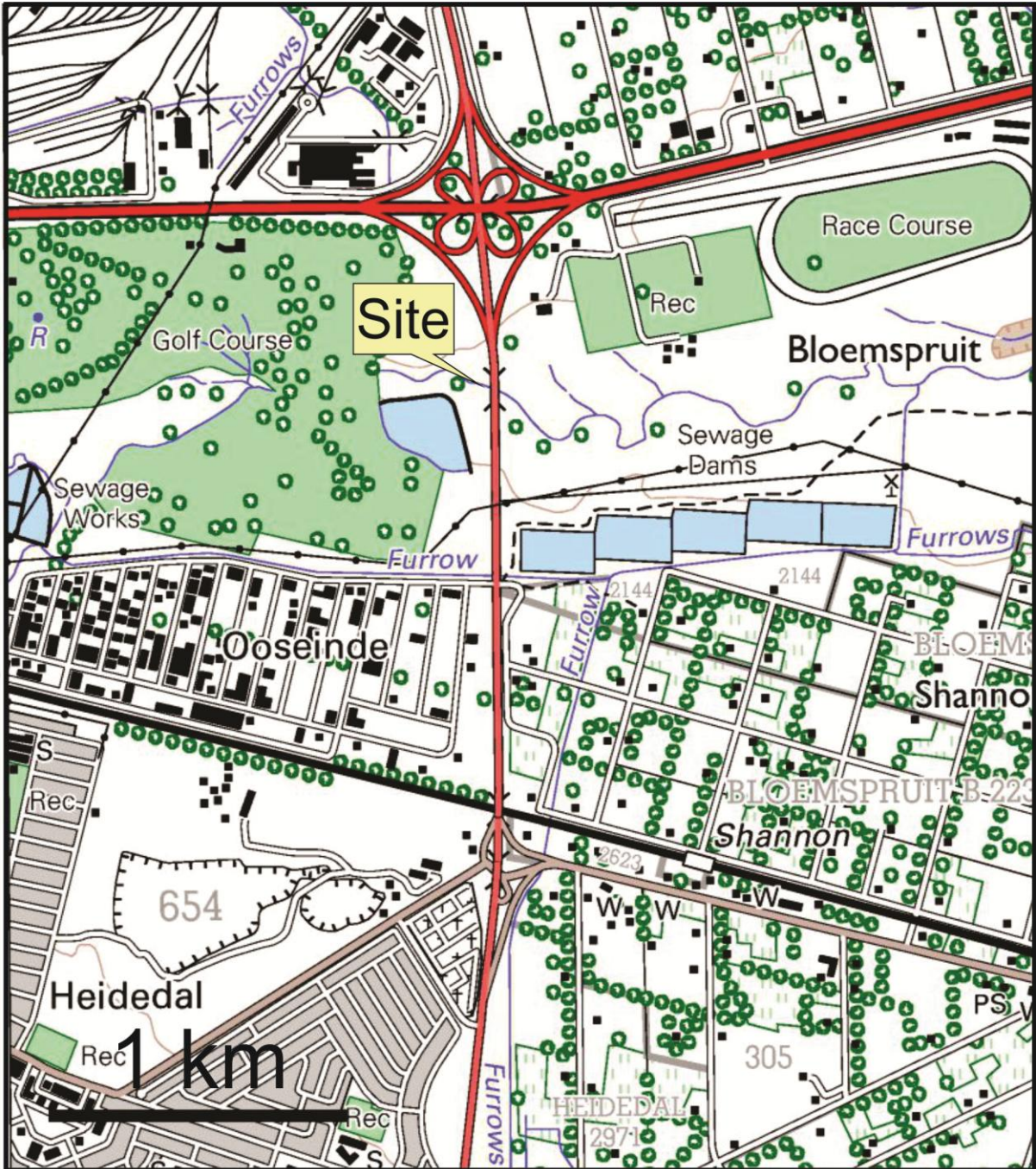


Figure 1. Site map (portion of 1:50 000 scale topographical map 2926 AB Maselspoort).

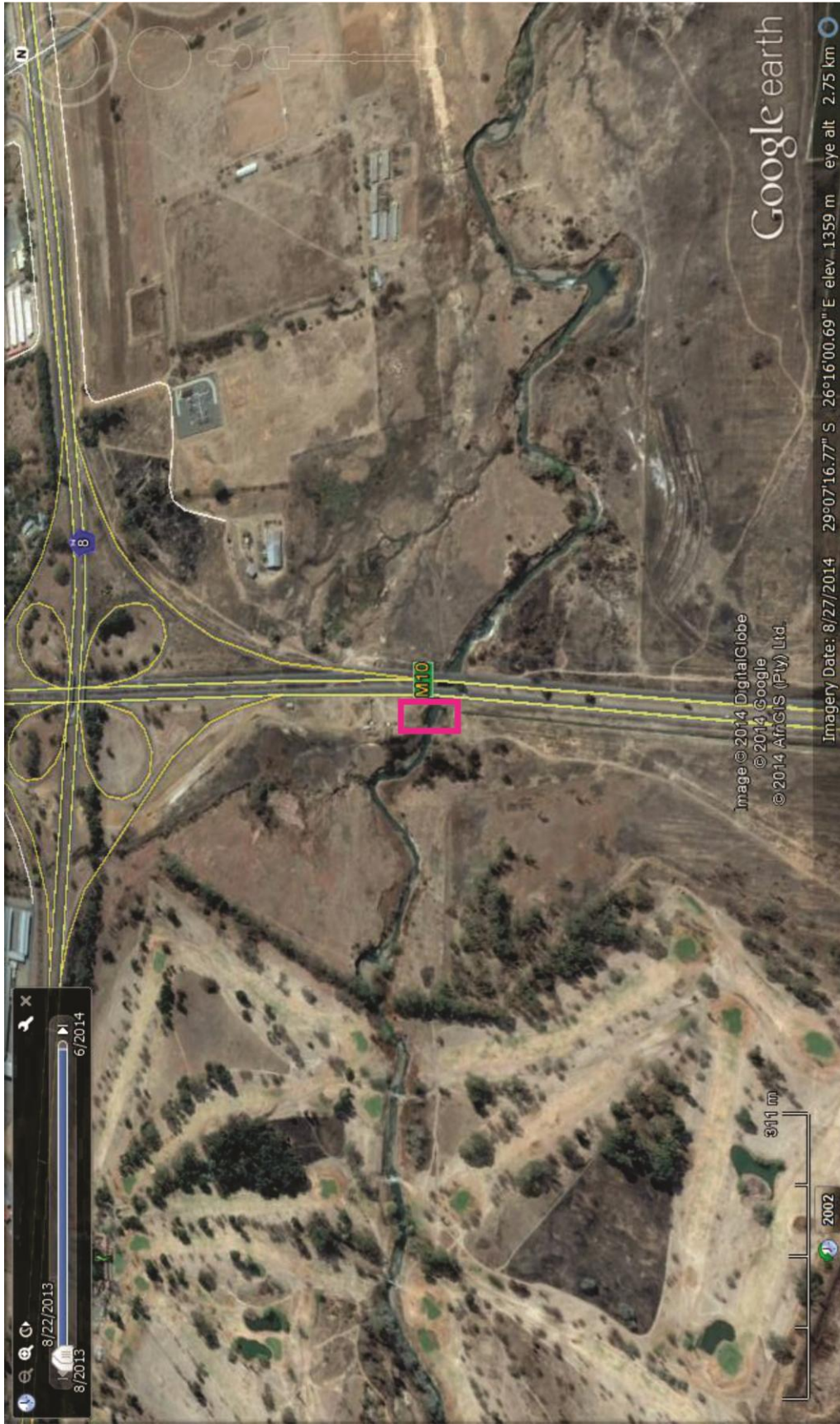


Figure 2. Aerial view of the site.



Figure 3. The site is located within an area considered to be of high palaeontological sensitivity (red areas, SAHRIS 2014).



Figure 4. View of the proposed pipeline crossing at the Bloemspruit, looking north (above) and disturbed overbank sediments, looking west (below).