



AFRICAN HERITAGE CONSULTANTS CC

2001/077745/23

DR. UDO S KÜSEL

Tel/fax: (012) 567 6046

Cell: 082 498 0673

E-mail: udo.heritage@absamail.co.za

P.O. Box 652

Magalieskruin

0150

A. PHASE I CULTURAL HERITAGE RESOURCES IMPACT ASSESSMENT

(a) BACKGROUND INFORMATION ON PROJECT:

PHASE I CULTURAL HERITAGE RESOURCES IMPACT ASSESSMENT FOR THE PROPOSED TOWNSHIP ESTABLISHMENT OF THE VILLAGE AS INDICATED IN KGETLENGRIVIER LOCAL MUNICIPALITY: REAGILE EXTENSION 9 PROPOSED PORTION 45 (A PORTION OF PORTION 22) OF THE FARM LEEUWFORTEIN 456 JP NORTH WEST PROVINCE

(b) REPORT COMPILED BY

Dr Udo S. Küsel, African Heritage Consultants CC,

P.O. Box 652, Magalieskruin, 0150

Tel: (012) 567 6046; Cell: 082 498 0673

E-mail: udo@nconnect.co.za

(c) DEVELOPER AND CONSULTANT INFORMATION

Project applicant:

Kgetlengrivier Local Municipality

Contact person: Mr. Reuben Mavhungu

Tel: 076 334 4342

Consultant:

Malepa Planning & Projects (Pty) Ltd

Contact Person: Ms. René Vermeijs

Tel: 018 462 4465; Cell: 072 626 9669

(d) DATE OF REPORT

12 June 2020

B. EXECUTIVE SUMMARY

The site was visited and inspected on foot and by vehicle. Visibility was fair though the veldt had not yet been burned.

No important cultural heritage resources or graves were found on the proposed development site. There is no objection to the proposed development from a cultural heritage resources point of view.

If during construction any cultural heritage resources or graves are unearthed all work has to be stopped until the site has been inspected and mitigated by a Cultural Heritage Practitioner.

DECLARATION OF INDEPENDENCE

I, Udo S. Küsel (African Heritage Consultants CC) declare that:

- I act as the independent specialist in this application to Malepa Planning & Projects (Pty) Ltd;*
- I will perform the work relating to the application in an objective manner, even if this results in views and findings that are not favourable to the applicant;*
- I declare that there are no circumstances that may compromise my objectivity in performing such work;*
- I have no vested financial, personal or any other interest in the application;*
- I have no, and will not engage in, conflicting interests in the undertaking of the activity;*
- I undertake to disclose to the applicant and the competent authority all material information in my possession that reasonably has or may have the potential of influencing - any decision to be taken with respect to the application by the competent authority; and - the objectivity of any report, plan or document to be prepared by myself for submission to the competent authority; and*
- All the particulars furnished by me in this form are true and correct.*



Udo S. Küsel

12 June 2020

African Heritage Consultants CC P.O. Box 652 MAGALIESKRUIJN 0150

Tel: (012) 567 6046; Fax: 086 594 9721; Cell: 082 498 0673

E-mail: udo@nconnect.co.za

Accredited Professional Archaeologist for the SADC Region Member No. 068
Principal Investigator Iron Age
Principal Investigator Colonial Period
Principal Investigator Industrial Archaeology
Field Director Stone Age
BA Archaeology, Anthropology and Indigenous Law, University of Pretoria 1966
MA Archaeology, University of Pretoria 1975
D. Phil, University of Pretoria 1988
Post-Graduate Diploma in Museum and Heritage Studies

THE AUTHOR

Dr Udo Küsel has more than fifty years of experience in heritage planning, development and management. From a strategic planning perspective, he was involved in the planning and the declaration of the Robben Island Museum as a National Cultural Institution. He also served as President of the South African Museums Association as well as the South African Cultural History Association.

In 2001, he established African Heritage Consultants CC and has undertaken more than 1500 Heritage Impact Assessments and compiled numerous heritage management plans. As consultant he has been involved in the development of the Dzata Museum in Venda, the Tšate Site Museum in Sekhukhune and Thomo Cultural Village near Giyani to name a few.

He also served as a part-time lecturer in Museum and Heritage Studies at Pretoria University for 30 years. Recently he trained 30 unemployed people in Sekhukhune to undertake the recording of the recording of the heritage of the area. He supervised the project for three years and recorded 200 heritage sites in the area with the aim to develop the heritage resources of the region.

C. TABLE OF CONTENTS

	Page
A. Title Page	01
B. Executive Summary, Declaration of Independence and The Author	02
C. Table of Contents	04
D. Background Information on the Project	05
E. Background to the Archaeological History	06
F. Description of the Property or Affected Environment	13
G. Description of sites	16
H. Description of the Artefacts, Faunal, Botanical or other Finds and Features	22
I. Clear Description of Burial Grounds and Graves	22
J. Field Rating	22
K. Statement of Significance (Heritage Value)	22
L. Recommendations and Conclusion	22
M. Bibliography	22

D. BACKGROUND INFORMATION ON THE PROJECT

(a) Whether the report is part of a scoping report/EIA/HIA or not

Report forms part of an Environmental Impact Assessment

(b) Type of development (e.g. low cost housing project, mining etc).

Low cost housing

(c) Whether re-zoning and/or subdivision of land is involved.

Re-zoning not applicable

(d) Developer and consultant and owner and name and contact Details:

Developer:

Department of Local Government and Human Settlements
Tel: 018 299 2890

Applicant:

Kgetlangrivier Local Municipality
Contact Person: Mr. Reuben Mavhungu
Cell: 076 334 4342

Consultant:

Malepa Planning & Projects (Pty) Ltd
Contact Person: Ms. René Vermeijs
Tel: 018 462 4465; Cell: 072 626 9669

(e) Terms of reference

To conduct a Heritage Impact Assessment to assess if there is any material of cultural or heritage value under the footprint of the proposed development

(d) Legislative requirements of Act 25 of 1999.

PROTECTED SITES IN TERMS OF THE NATIONAL HERITAGE RESOURCES ACT, ACT NO. 25 OF 1999

The following are the most important sites and objects protected by the National Heritage Act:

- Structures or parts of structures older than 60 years.
- Archaeological sites and objects.
- Paleontological sites.
- Meteorites.
- Ship wrecks.
- Burial grounds.
- Graves of victims of conflict.
- Public monuments and memorials.
- Structures, places and objects protected through the publication of notices in the Gazette and Provincial Gazette.
- Any other places or objects, which are considered to be of interest or of historical or cultural significance.
- Geological sites of scientific or cultural importance.
- Sites of significance relating to the history of slavery in South Africa.
- Objects to which oral traditions are attached.
- Sites of cultural significance or other value to a community or pattern of South African history

E. BACKGROUND TO THE ARCHAEOLOGY AND HISTORY OF THE AREA.

The Stone Age

Archaeological traces in the form of mostly stone tools suggest a widespread presence for tool-producing Plio-Pleistocene hominins¹ in southern Africa. This important part of the prehistory of southern Africa, known as the Stone Age, is chronologically divided into the Earlier (ESA), Middle (MSA) and Later (LSA) Stone Age.

Earlier Stone Age (> 3 million years ago - 250 000/200 000)

The NWP has three World Heritage Sites: Taung (Government Notice 2013/706, Gazette No. 36637), the Cradle of Humankind that is shared between NWP and Gauteng, and the Vredefort Dome. The first two are important palaeo-anthropological localities. The Taung Skull Fossil Site comprises palaeontological, archaeological and also historic sites associated with the mining of limestone. This locality contains at least 17 distinct fossiliferous deposits. Taung was the first site in southern Africa to yield an australopithecine specimen. In 1924 Raymond Dart named the fossilised juvenile skull from Taung *Australopithecus africanus*. Taung is therefore the type site for *Australopithecus africanus*.

The fossil remains of these hominins and animal fauna occur in breccias, a hard conglomerate of lime and bone. The Taung skull was recovered from the Buxton quarry through mining for limestone during the early 20th century. In the extraction of limestone from the breccias the unprofitable bone-bearing rocks were piled in dumps. Many of these dumpsites have yielded important hominin specimens and associated faunal remains of

¹ The term "hominin" instead of the customary term "hominid", acknowledge that African apes, including human ancestors, are closer to each other phylogenetically than any of them are to orang-utans (Mitchell 2002). The term hominid includes all the higher primates (chimps, gorillas, orang-utans, ancestral human types and ourselves), while hominin refers to those genera which evolved **after** the split with the chimps.

extinct animals. Current research projects focus on sampling the *in situ* fossil deposits and also dumpsites to determine the geological contexts and to obtain dates (Herries et al 2009; Herries & Adams 2013; Kuhn 2013). The Department of Agriculture, Conservation and the Environment of North West is in the process of upgrading several aspects of the Taung Skull Heritage Site ‘to more clearly reflect the very significant historical nature of the precinct’ (Iliso 2014:1). Design proposals for the exhibition spaces and other structures have been submitted by Mashabane Rose Associates (2013). The australopithecines that date to between 3.5 and 2 Ma² are important because of their possible ancestral link to the *Homo* genus. The NWP borders on the Cradle of Humankind. Gondolin (Broederstroom 481 JQ) and Haasgat (Leeuwenkloof 480 JQ) fall within the band of important palaeoanthropological sites that comprise the Sterkfontein Valley landscape. Interdisciplinary research is currently being undertaken at both localities. Gondolin Cave, with approximate dates of 1.95 to 1.78 Ma, has yielded hominin remains of *Paranthropus robustus* and a suite of extinct fauna (Herries & Adams 2013). The fossiliferous deposits from Haasgat, dating to >2 Ma, contain extinct terminal Pliocene/early Pleistocene primates and other fauna but no hominins have yet been recovered (Adams 2013). These sites all have National Heritage status and the area has been declared a World Heritage Site (UNESCO) (Government Notice 2006/R449, Gazette No. 28831).

The australopithecines were gradually displaced by *Homo habilis*, a genus that evolved into the more advanced *Homo ergaster* by 1.8 million years BP. The large lithic cutting tools associated with these hominins form part of the Oldowan and Acheulean industries. Apart from the fossil hominin specimens from Taung and the Cradle sites, no major ESA assemblages have been yet recorded in the NWP. Specimens of *Homo* have also not been recovered from Stone Age localities in the NWP.

Middle Stone Age 200 000/250 000 years ago – 20 000 years ago

By 250 000 years BP, the large cleavers and hand axes of the ESA disappeared and were replaced by a larger variety of smaller tools and weapons of diverse shapes and sizes, made by different techniques. This change in technology marks the beginning of the MSA. During the MSA early humans still settled in the open near water sources but also in caves and shelter localities. The MSA marks the transition from the more archaic *Homo ergaster* to anatomically modern humans, *Homo sapiens sapiens*. Following on the ESA the MSA typologies represent greater specialization in the production of stone tools, in particular flake, blade and scraper tools and also in a more extended range of specialized, formal lithic tool types. This period is marked by regional lithic variability, evidence for symbolic signalling, polished bone tools, portable art and decorative items. Prepared cores were commonly used so that flaked products often retain the characteristic faceted striking platform that derives from this technique. The main developments during this period are cognitive, cultural and physical modernity. Whereas no major MSA sites are known, several scatters of MSA lithics have been recorded, for example within the Vredefort Dome (Pelser 2005; Henderson & Koorzen 2007).

Later Stone Age (<20 000 – historical period)

The LSA is marked by a series of technological innovations, social transformations and also noticeable demographic changes. During the LSA small (microlithic) tools, bone tools and weapon armatures and a range of decorative items as well as rock art were produced. These

² Ma = million years ago

hunter-gatherer societies relied to a large extent on bow-and-arrow hunting with poisoned tips, and also snaring. Ceramics were used and/or produced by hunters and Khoekhoe herders towards the terminal phases of the LSA over a period of around 2000 years.

Kruger Cave close to the Olifantsnek Dam is the most important LSA locality in the NWP. Excavations by Revil Mason (1962, 1988) found that hunter-gatherers occupied the site over many years, leaving behind a rich suite of cultural materials apart from an extensive lithic assemblage. The remains of iron smelting furnaces and ceramics in Kruger Cave are evidence of the subsequent utilisation of this locality by African farmers. Whereas not many other LSA sealed sites have been recorded, a real presence for hunter-gatherers within the region is evidenced by investigations at a small rock shelter Holkrans (Buffelskloof 511 IQ) on the NWP side of the Vredefort Dome. At this locality two occupation pulses were found where the older pre-ceramic occupation was followed by a cultural layer with ceramics that demonstrated some interactive relationships with nearby African farming communities (Bradfield & Sadr 2011; Sadr 2012).

Rock art

The ubiquitous presence of hunter-gatherers and pastoralists on the landscape is further demonstrated by the number of significant rock art localities in the NWP. It is universally accepted that the landscape featured importantly in the selection of suitable surfaces to make rock markings (Deacon 1988; Ouzman 1996, 2001; Morris 2012). Thaba Sione (near Mahikeng) contains more than 500 San rock engravings, including very fine depictions of rhinoceroses. Several rock outcrops have been polished through being used as a rubbing post by rhinoceroses. Some of the engraved images, but in particular those that depict rhinoceroses, exhibit smooth areas where they have been rubbed through human interaction, probably during ceremonial activities such as rain-making rituals. Most of the early hunting and gathering groups were eventually assimilated by LIA communities. Their enduring legacy is found in the beliefs and rituals that have been absorbed and changed by the later settlers of the region. This is demonstrated by important ritual locales such as Thaba Sione where physical and spiritual resources are still recognised by local Tswana people. The Zionist Christian Church moreover makes use of Thaba Sione for rituals that include rain-making (Ouzman 1996, 2000, 2001; (<http://www.nasmus.co.za/departments/rock-art/public-rock-art-sites>)).

Driekuil Hill near Ottosdal is one of at least 12 sites that include Gestoptefontein Mountain and Gestoptefontein Hill, regarded collectively as the largest and most significant Khoe-San rock art sites in the NWP. On outcrops of pyrophyllite, known as 'wonderstone', the pecked and incised images comprise anthropomorphs, zoomorphs, aprons, skins and other objects and grooves, pits, hammered areas, clusters of pecks and cut marks) that may have been made as part of ceremonies. It is suggested that the art is associated with Khoe-San girls' puberty rituals (Hollman 2007).

Gestoptefontein/Tlogo Pitsane has oral traditions associated with different groups, namely pastoralists such as the Korana and the Tswana (Holub 1881; Schmidt 2001; Holman 2007). The local Tswana associated a watersnake with this locality. The explorer Emile Holub, on his visit in 1872-1875 to South Africa, removed various rock art panels, including around 200 slabs from Gestoptefontein and sent these to Europe where the majority were accessioned in a Vienna museum.

Bosworth near Klerksdorp, Manyane near Molopo River about 15km east of Mmabatho and several localities in the Magaliesberg contain rock engravings on boulders and rock outcrops (Mason 1962). At most of the Magaliesberg sites engravings occur near the very numerous stone-walled settlements. The engravings show authorship of both hunter-gatherers and African farmers, e.g. at the large stone-walled settlement of Olifantspoort and at Maanhaarrant in the Bojanala District (Mason 1962).

Iron Age

The migration into southern Africa and expansion of Early Iron Age (EIA) African farming societies is apparent in this area from AD 400 onwards. Pioneer Sotho-Tswana groups settled in semi-permanent villages, cultivated a range of crops, raised livestock, made ceramic containers, mined ore and smelted metals and engaged in trade or barter. The first-millennium site of Broederstroom (a Provincial Heritage Site) near the Hartbeespoort Dam yielded data on settlement layout, cultivation, herding and iron working. Most sites from the EIA are located near water sources. The nutrient-rich alluvial earthens would have been favoured for agriculture. A lack of sites from this period is probably explained by their close proximity to floodplains that resulted in the burial of settlements so that they are usually only visible in eroded areas. An example in the Marico is an EIA site discovered from erosional contexts near the Mokgola stream, about 2 km northwest of the Kaditshwene ruins in central Marico, which yielded a fragmented pottery sample (Boeyens 2003). The onset of the Little Ice Age that resulted in drier conditions in southern Africa around AD 1300 contributed to the expansion of Sotho-Tswana speakers into territories until then occupied by the descendants of southern Africa's first farmers. Middle Iron Age (MIA) sites known from the Eiland-style ceramics become more common, e.g. in the Madikwe Game Reserve (Huffman 2000) and the Marico sites of Rietfontein and Magozastad (Boeyens 2003).

The earliest settlement of Sotho-Tswana speakers has been recorded for the 15th century AD in the NWP. The Late Iron Age (LIA) was accompanied by extensive stonewalled settlements, such as the National Heritage Site of the Kaditshwene Cultural Landscape (Government Notice 2011/696, Gazette No. 345620) in the Marico area, Molokwane (potential national heritage site east of Rustenburg), the Olifantspoort Complex near Koster and the Tlokwa settlement of Marothodi in the western Bankenveld near Pilanesberg. In the Pilanesberg National Park the mid-19th century settlement of Mabele-a-Podi was the capital of Pilane's Kgafela Kgatla. A large-scale aerial survey of stone-walled complexes in the former western Transvaal (Mason 1968; Seddon 1968; Küsel 1998) demonstrated that these aggregated settlements represent only a small part of the many stone-walled settlements on the NWP landscape (Boeyens & Hall 2009).

LIA sites occur across the entire NWP region (Breutz 1953; Boeyens 1998, 2000, 2003; Boeyens & Hall 2009). Early travellers such as Lichtenstein and Burchell, and missionaries, for instance John Campbell and Stephen Kay, provided valuable records of settlement layout and the spatial arrangement of houses. The Reverend Campbell (1822[i]) of the London Missionary Society visited Kaditshwene, the capital of the Bahurutshe booMenwe and the Bahurutshe booMokgatla, in 1820. He remarked that this was the most populous town encountered on his travels from the Cape. Campbell documented the concentrated spatial layout of the stone-walled settlement in some detail and also the interior of several houses and recorded the painted wall-decorations. The Wesleyan-Methodist missionary, Stephen Kay (1834) on his visit in 1821 estimated that Kaditshwene had 13 000 to 14 000 inhabitants.

The stone-walled settlement of Marothodi was the capital of the Rustenburg Tlokwa prior to their dispersal during the *difaqane*. This extensive settlement along the Kgetleng (Elands) River in the Rustenburg region of NWP yielded considerable insight into the technology employed in the smelting and working of copper and iron by indigenous metal workers (Hall et al 2008; Boeyens & Hall 2009; Miller 2010). The contemporary Molokwane to the west of Rustenburg was the capital of the the pre-*difaqane* 19th-century capital of the Modimosana Mmatau Kwena (Pistorius 1992, 1994; Boeyens 2003, Steyn 2011).

In the Vredefort Dome the very numerous Late Iron Age stone-walled settlements of later Sotho-Tswana communities demonstrate that the area was occupied by African farmers from at least AD 1400 to AD 1800. Early Nguni groups also settled here (Maggs 1976; Huffman 2007; Byrne 2012). In the Marico area the presence of groups with Nguni origins are well-documented. During the historical period the Ndebele of Mzilikazi moved into the Marico in the 1820s only to settle in the Magaliesberg from 1827 (Boeyens 2003).

The historical context of NWP

Mahikeng is used as an example to demonstrate historical heritage resources in the NWP. Tswana groups of the Barolong first moved into this region during the late 1700s/early 1800s. Mahikeng was intensively settled by sections of the Barolong, part of the western cluster of the Sotho group, and in particular the Tshidi (Matthews 1940, 1945). Mahikeng was the name of their capital. While the name Mafeking was used to conform to the then orthography the name has now reverted to the original spelling. Disputes over land resulted in internal strife within Barolong sections that culminated in conflicts and ultimately battles (1881-1884) (Matthews 1945).

The expansion of the Voortrekkers and the establishment of the ZAR resulted in a division of the Mahikeng district into separate areas to be occupied by the Barolong and the Europeans respectively (<http://www.sahistory.org.za/places/mafikeng>). The Tshidi continued to reside in the Maheking district in large centralized settlements (Dachs 1972; Comaroff 1980). Many of these settlements are still to be seen on the landscape as stone-walled archaeological sites.

It is of note that the well-known and distinguished writer, Sol Plaatje, lived near Mahikeng. Lodge (1990:164) points out that ‘the two foremost historical writers who can be associated with the ANC’s early development, S Modiri Molema (1891-1965) and Sol T Plaatje (1876-1932), both grew up within Barolong communities’.

The North West Province of South Africa is bounded on the north by Botswana, on the south by the provinces of Free State and the Northern Cape, and on the northeast and east by the Limpopo Province and Gauteng. Covering 118,797 sq km (45,869 sq miles), the North West Province was created in 1994 by the merger of Bophuthatswana, one of the former bantustans (or black homelands), and the western part of Transvaal, one of the four former South African provinces.

Much of the province consists of flat areas of scattered trees and grassland. The Magaliesberg mountain range in the northeast extends about 130 km (about 80 miles) from Pretoria to Rustenburg. The Vaal River flows along the southern border of the province. Temperatures range from 17° to 31° C (62° to 88° F) in the summer and from 3° to 21° C

(37° to 70° F) in the winter. Annual rainfall totals about 360 mm (about 14 in), with almost all of it falling during the summer months, between October and April.

Mafikeng, formerly Mafeking, serves as the provincial capital. Other significant towns include Brits, Klerksdorp, [Lichtenburg](#), [Potchefstroom](#), Rustenburg and Sun City. The province has two universities: the University of North West, which was formerly called the University of Bophuthatswana (founded in 1979), in Mmabatho; and Potchefstroom University for Christian Higher Education (founded in 1869; became a constituent college of the University of South Africa in 1921 and an independent university in 1951).

Important historical sites in the province include Mafikeng, the traditional capital of the Barolong people, where a British garrison was placed under siege by Afrikaners during the Boer War (1899-1902); Lotlamoeng Cultural Village near Mafikeng, which re-creates a traditional African village; and Boekenhoutfontein, the farm of Paul Kruger, who was the last president of the South African Republic (a state created by Afrikaners in what is now north-eastern South Africa), from 1883 to 1902. The province has several national parks. The largest, Pilanesberg Game Reserve, is located in the crater of an extinct volcano.

A major heritage resource is the fort known as Kanonkoppie situated to the south-west outside the town of Mafeking. It was erected in 1884 by the Sir Charles Warren of the British in a mainly abortive endeavour to suppress the confrontational incorporation of the Stellaland and Goshen republics into the then ZAR. During the Anglo-Boer War of 1899 additional fortifications were erected at the fort and manned by the Bechuanaland Protectorate Regiment during the siege of Mafeking. The fort has since been restored by the municipality of Mafeking and proclaimed as a heritage site in 1962 (SAHRIS site ID 26028, Provincial Heritage Site Gazette Date: 09/02/1962 Gazette No: 171).

History of Koster

Koster lies on the edge of the bushveld and Highveld. The Highveld area is mainly to the south of the town and was avoided by the Iron Age people because of a lack of wood. The area north of the town is more suitable for Iron Age occupation. North of Koster on the farm Waterval 428 JP and Hartbeesfontein 431 JP Küsel recorded 20 Late Iron Age Tswana sites. The sites all have well built stone walls but differ in size from extended families units to possible the settlement of headman. Some stonewalls are nearly 2 meters tall. Remains of houses and hut floors and large ash midden`s were found as well as a monolith.

On the site known as Morningside is also an old farmhouse of which the original section dates to the 1890`s as well as the original stables and a cemetery – see photographs.



Original stables at the farm Morningside



Stonewalling with a monolith in-between



Entrance to the site with its high walls



Well preserved stone foundation of a hut in the site



Well preserved stone foundation of a hut in the site

The origin of the town Koster is unsure. According to some historians the town was named after a surveyor who surveyed the town before it was proclaimed. Another explanation of the origin of the town is that it was named after Dr. Herman Coster the state attorney of the Zuid Afrikaansche Republiek (ZAR). But this does not explain why the town's name was spelled with a K instead of a C (Nienaber P.J. 1971 p 267).

The third explanation is that when the railway line from Johannesburg to Mafeking was built in 1910 one of the stops along the railway line was on the farm Kleinfontein. The owner of the farm was Bastian Koster who was born in Rotterdam in the Netherlands and immigrated to South Africa. People started settling in the area and the town was proclaimed in 1913 and named after Bastian Koster.

The last major diamond rush in South Africa took place here on 11 November 1970 when 162 Diamond miners participated in a race to pin diamond claims. The area is today mainly a mixed farming area (Erasmus B.P.J. 1995 p 326).

F. DESCRIPTION OF PROPERTY OR AFFECTED ENVIRONMENT

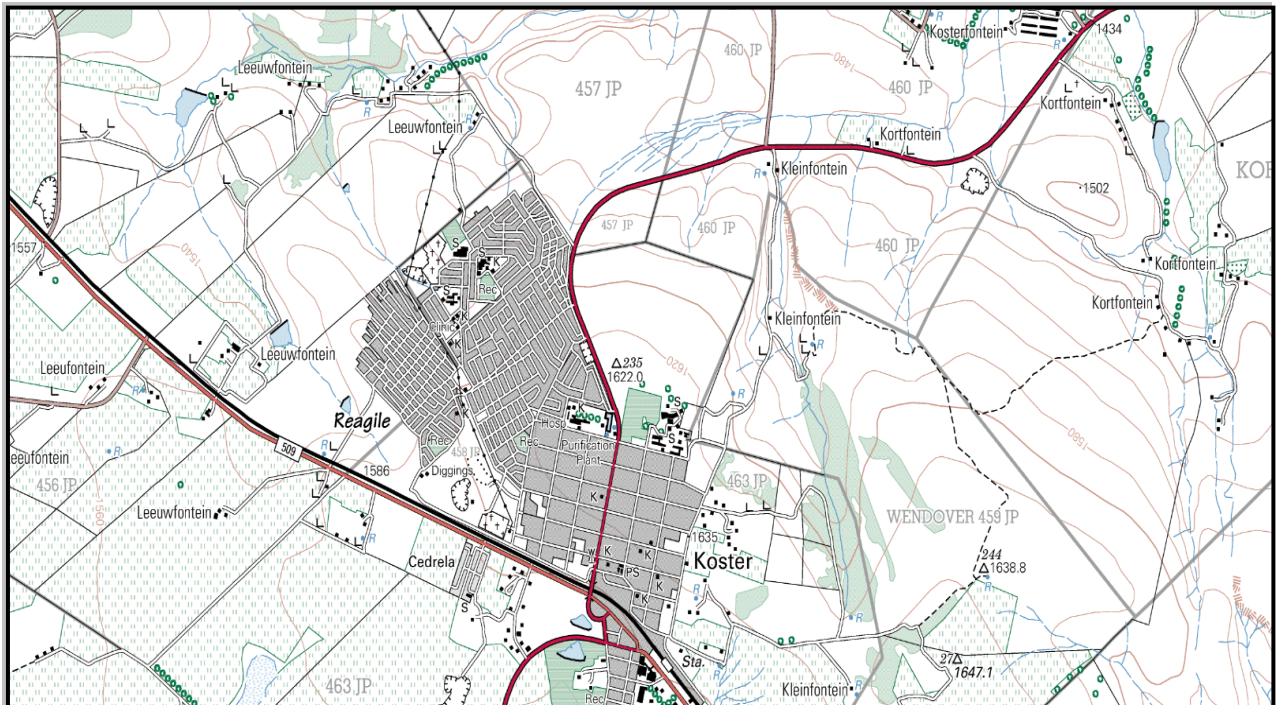
(a) Detail of area surveyed

- Full location Data for Province, Magisterial District/Local Authority and property (e.g. Farm erf) name and number etc.:

Kgetlengrivier Local Municipality
Contact Person: Mr. Reuben Mavhungu
Sel: 076 334 4342

Department of Local Government and Human Settlement
Tel: 018 299 2890

Proposed portion 45 (a portion of portion 22) of the farm Leeuwfontein 456 JP North West Province Reagile Extension 9 Low Cost Housing

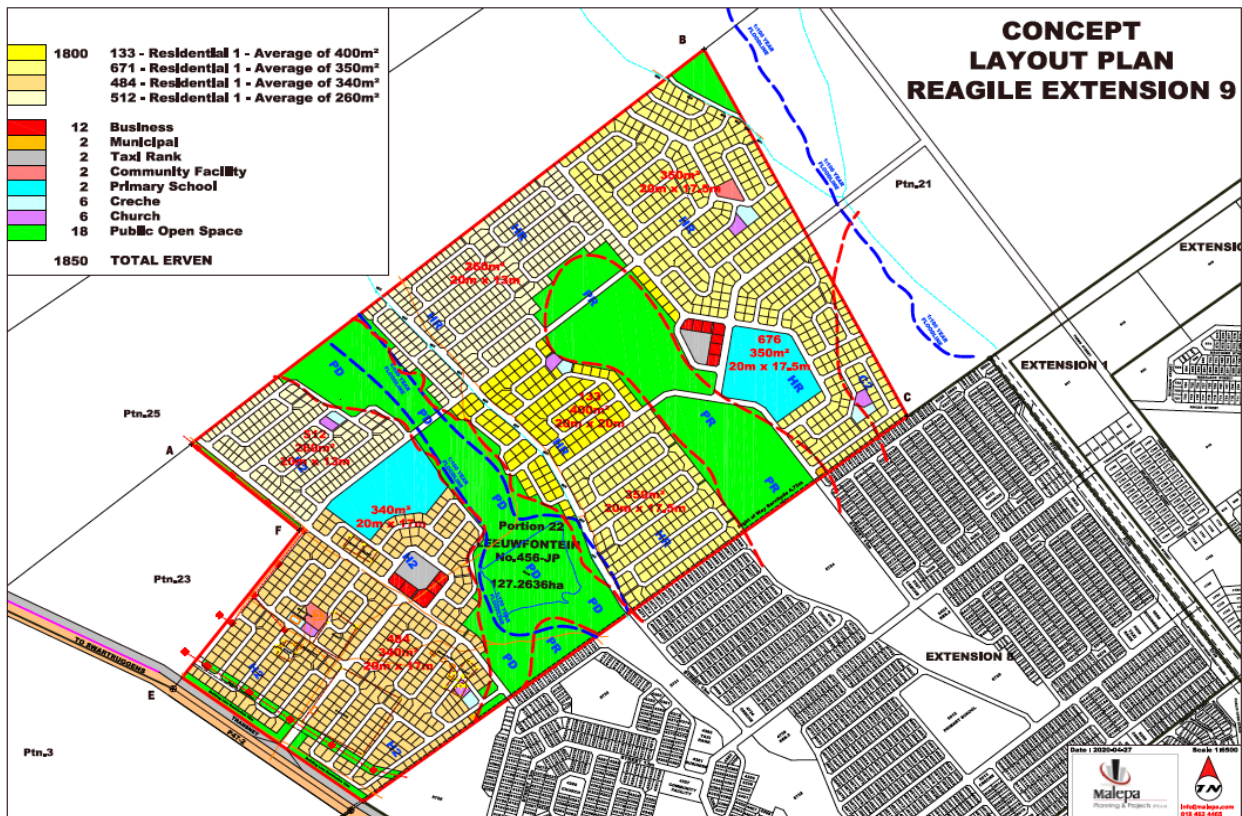


Map:1/50 000 Koster 2526DD

- Either the Location Map or the site Map must have the polygon of the area surveyed marked on it and full geographical co-ordinates for all relevant points and where applicable, indication of the area to be developed (footprints)



Co-ordinates: S25° 51' 04.33" & E26° 51' 52.26



Proposed township layout. Reagile proposed portion 45 (a portion of portion 22) of the farm Leeuwfontein 456 JP North West Province

(b) Description of methodology

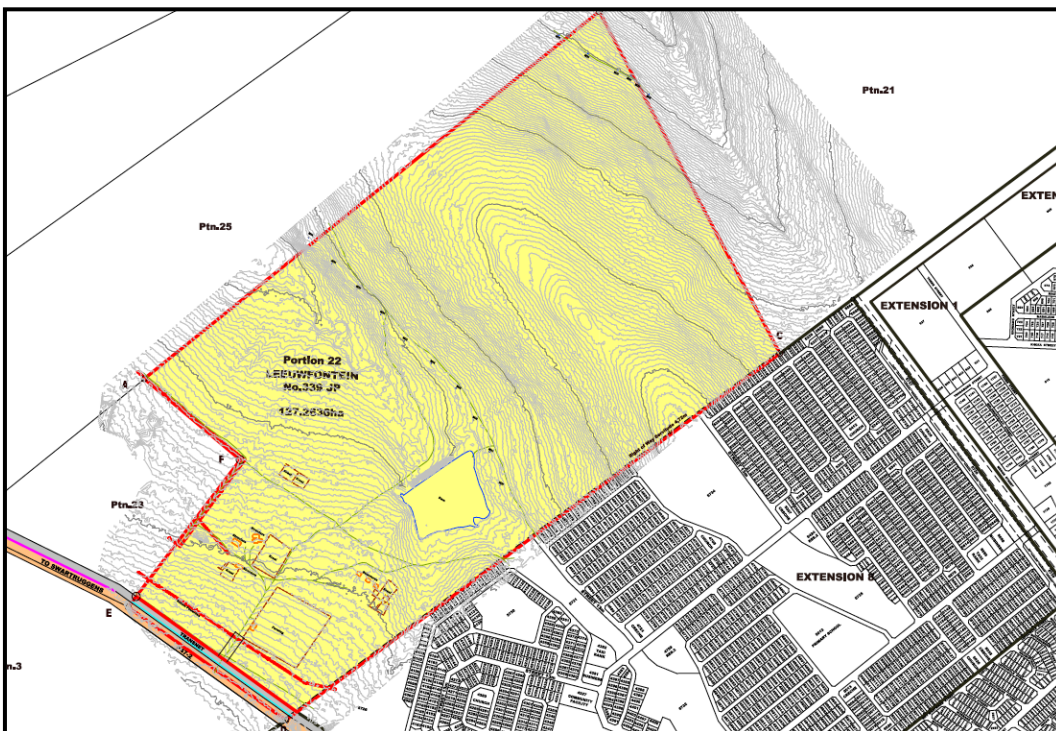
The site was visited by Dr. Udo S. Küsel and Siegwalt U. Küsel both archaeologists. The site was inspected on foot and by vehicle. We also interviewed local people who still live on the farm. They insured us that there are no graves on the proposed development site. Visibility was fair.

G. DESCRIPTION OF SITES IDENTIFIED AND MAPPED

The proposed development site was visited and recorded. Though it is winter the grass had not been grazed for a long time and not been burned as the farm is not used for cattle breeding anymore. Two local men still living on the farm were interviewed. They confirmed that there are no graves on the proposed development area. Most of the previous development on the site had taken place in the southern section of the farm.

No Stone Age or Iron Age sites are present on the inspected site. The following modern farming remains were found on the site (See map of existing structures)

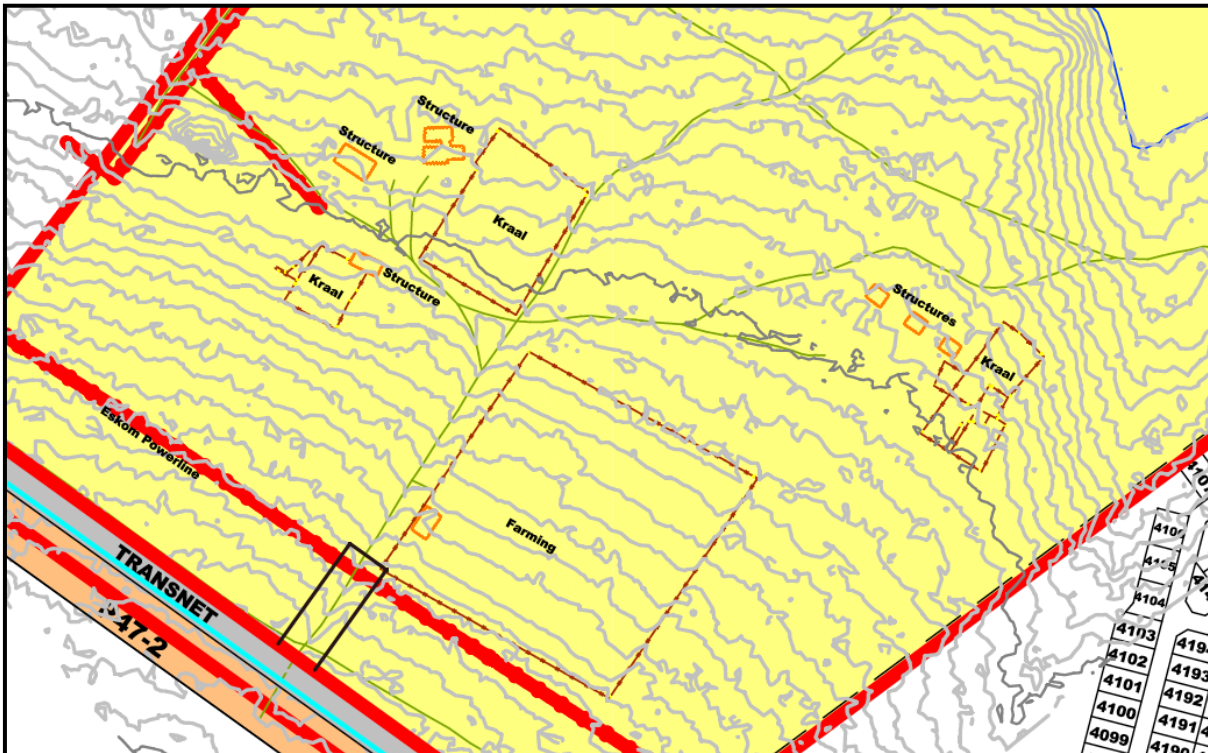
Proposed Reagile X 9 proposed portion 45 (a portion of portion 22) of the farm Leeuwfontein 456 JP



Study area with survey of existing structures

(a) Modern farming project

In the south eastern corner of the site is a modern shed and community vegetable farm project – see map & photographs.



Detail of existing structures.



The Modern Farming Project

(b) Modern farmhouse

At S25° 51' 04.33" & E26° 51' 52.26, this farmhouse and outbuildings date to the late 1970's and consists of a farmhouse, outbuildings, silo and workers houses – see photographs.



Modern Farmhouse dating to the late 1970's located at S25°51'4.33" & E26°51'52.26"



Front façade of the farmhouse



Modern Outbuildings and silos

(c) Farm workers houses

Just north-east of the vegetable farm are three modern farm workers houses and their infrastructure at S25°51'8.16" & E26°52'1.67" – see photograph.



Modern worker houses at S25°51'8.16" & E26°52'1.67"

(d) Foundations

Just north of the modern farm workers houses are the foundations and a rubble heap of possible early farm workers houses at S26° 52' 2.19" & E25° 51' 4.69"





(e) Rock heaps

Just north of the modern dam rock heaps occur just outside the boundaries of the maize fields. These rock heaps are typical of rocks discarded during ploughing.



Discarded rocks, the remains of clearing agricultural areas

(f) Large wild olive tree

On the rock ridge S25° 50' 52.11" & E26° 52' 14.51" is a very large *Olea europea subspecies cuspidate tree*. This tree is the only one of its kind found on the farm and is very old – see photograph.



Large *Olea europea* subspecies *cuspidata* associated with the rocky ridge located at 25°50'52.11"S 26°52'14.51"E

(g) Sewerage pipeline and dam

Just north of the dam and river is a modern sewerage pipeline which was recently constructed.



H. DESCRIPTION OF THE ARTEFACTS, FAUNA, BOTANICAL OR OTHER FINDS AND FEATURES

None

I. CLEAR DESCRIPTION OF BURIAL GROUNDS AND GRAVES

None

J. FIELD RATING

Not applicable

K. STATEMENT OF SIGNIFICANCE (Heritage value)

Not applicable

L. RECOMMENDATIONS AND CONCLUSION

No important cultural heritage resources of graves were found on the proposed development site. There is no objection to the proposed development from a cultural heritage resources point of view.

If during construction any cultural heritage resources or graves are unearthed all work has to be stopped until the site has been inspected and mitigated by a Cultural Heritage Practitioner.

M. BIBLIOGRAPHY

- Adams, JW. 2012. A revised listing of fossil mammals from the Haasgat cave system *ex situ* deposits (HGD), South Africa. Article number 15.3.29A. Copyright Palaeontological Association. Accessed February 2012.
- Bakker, K, Naude, M, Clarke, N, van Schalkwyk, J, van Vuuren, C & van Zyl, C. 2004. *Vredefort Dome Cultural Heritage Survey and Conservation Management Plan*. SAHRA.
- Boeyens, JCA. 1998. Die Latere Ystertydperk in suidoos- en sentraal-Marico. Unpublished D.Phil. thesis, University of Pretoria.
- Boeyens, JCA. 2000. In search of Kaditshwene. *South African Archaeological Bulletin* 55: 3-17.

- Boeyens, JCA. 2003. The Late Iron Age sequence in the Marico and early Tswana history. *South African Archaeological Bulletin* 58(178): 63-78.
- Boeyens, JCA. 2011. The entangled past: integrating archaeology, oral tradition and history in the South African interior. Inaugural Lecture. UNISA.
- Boeyens, JCA. 2012. The intersection of archaeology, oral tradition and history in the South African interior. *New Contree* 64: 1-30.
- Boeyens, J & Hall, S. 2009. Tlokwa oral traditions and the interface between history and archaeology at Marothodi. *South African Historical Journal* 61(3): 457-481, DOI: 10.1080/02582470903189717
- Bradfield, J & Sadr, K. 2011. Stone arrowheads from Holkrans, North West Province, South Africa. *The South African Archaeological Bulletin* 66(193): 77–88.
- Breutz, P-L. 1953. The tribes of Marico District. Ethnological Publications 32. Government Printer, Pretoria.
- Burchell, W. 1967 [1822-24]. *Travels in the interior of southern Africa*. Vol 2. Cape Town: Struik.
- Byrne, R. 2012. *A landscape approach to the archaeology of the Vredefort Dome*. MSc University of the Witwatersrand.
- Campbell, J. 1822 [i & ii]. *Travels in South Africa under-taken at the request of the London Missionary Society; being a narrative of a second journey in the interior of that country (1820)*, 2 Vols. London: Westley.
- Comaroff, J. 1980. Healing and the cultural order: the case of the Barolong booRatshidi of southern Africa. *The American Anthropological Association* 637-657. doi:10.1086/1010004
- Dachs, A.J. 1972. Montshiwa and the country of the Rolong. *African Studies* 31(1): 31-35.
- Deacon, J. 1988. The power of a place in understanding southern San rock engravings. *World Archaeology* 20: 129-140.
- Hall, S, Anderson, M, Boeyens, JCA & Coetzee, FP. 2008. Towards an outline of the oral geography, historical identity and political economy of the late precolonial Tswana in the Rustenburg region, in *Five hundred years rediscovered: Southern African precedents and prospects*, edited by N Swanepoel, A Esterhuysen & P Bonner. Johannesburg: Wits University Press: 55-85.
- Henderson, Z & Koorzen, C. 2007. Assessment of proposed Eskom line alternatives within the Zeus-Mercury-Vredefort Dome extended study area, in terms of archaeological and other heritage sites. Bloemfontein National Museum.

- Herries, A, Curnoe, D and Adams, J. 2009. A multi-disciplinary seriation of early *Homo* and *Paranthropus* bearing palaeocaves in southern Africa. *Quaternary International*, 202:14-28.
- Herries, AIR AND Adams, JW. 2013. Clarifying the context, dating and age range of the Gondolin hominins and *Paranthropus* in South Africa. *Journal of Human Evolution* 65: 676-681.
- Hollman, J. 2007. The 'cutting edge' of rock art: motifs and other markings on Driekuil Hill, North West Province, South Africa. *Southern African Humanities* 19: 123–151.
- Holub, E. 1881. *Seven Years in South Africa*. Translated by Ellen E Frewer. 2 Vols. Africana Reprint Library 1975. Johannesburg: Africana Book Society
- Huffman TN. 2000. Archaeological survey of Madikwe Game Reserve, North West Province. Itinerary and handbook papers. Southern African Association of Archaeologists' post-conference excursion. Johannesburg: University of the Witwatersrand.
- Huffman, TN. 2007. *Handbook to the Iron Age: the archaeology of pre-colonial farming societies in Southern Africa*. Scottsville: University of KwaZulu-Natal Press.
- <https://www.britishmuseum.org/pdf/Appendices%201-4.pdf>. Appendix I. *Southern African Stone Age Collections in the Department of Ethnography of the British Museum*. Accessed February 2014.
- Iliso Consulting (Pty) Ltd. 2014. Taung Skull Heritage Site: main complex and Tumeng Falls: Roads water and sanitation.
- Jurmain, R, Kilgore, L & Trevathan, W. 2013. *Physical anthropology. The essentials*. 9thed. Wadsworth Cengage Learning.
- Kay, S. 1834. *Travels and researches in Caffraria*. New York: Harper.
- Küsel, MM. 1998. Die Ystertydperk, Hoofstuk 3:96-100. Met kaarte 2.2a, 2.2b. In Bergh, JS (red.) *Geskiedenisatlas van die noordelike streke [History atlas for the northern areas: The Iron Age]*. Pretoria: Van Schaik.
- Kuhn, BF. 2013. Taung Heritage Site – Second Year Report to SAHRA (2010-2012). Accessed February 2014.
- Lodge, T. 1990. Charters from the Past. The African National Congress and its historiographical traditions. *Radical History Review* 46/7: 161-188.
- Matthews, JK. 1940. Marriage customs among the Barolong. *Africa* 13(1): 1–24. DOI: 10.2307/1156989.
- Matthews, JK. 1945. *A short history of the TshidiBarolong*. Fort Hare Papers 9-20.

- Mashabane Rose Associates. 2013. Taung Skull Heritage Site Design Proposals. (SAHRIS accessed February 2014).
- Mason, R. 1962. *Prehistory of the Transvaal*. Johannesburg: Witwatersrand University Press.
- Mason, R.J. 1968. Transvaal and Natal Iron Age settlements revealed by aerial photography and excavation. *African Studies* 27(4): 167-180.
- Mason, R.J. 1974. Background to the Transvaal Iron Age - new discoveries at Olifantspoort and Broederstroom. *Journal of the South African Institute of Mining and Metallurgy* 212-216.
- Mason R.J. 1988. *Kruger Cave Late Stone Age, Magaliesberg*. Occasional Paper No. 18 of the Archaeological Research Unit. Johannesburg: University of the Witwatersrand.
- Miller, D. 2010. Indigenous metal melting and casting in southern Africa. *The South African Archaeological Bulletin* 65(191): 45-57.
- Mitchell, P.J. 2002. *The archaeology of southern Africa*. Cambridge: Cambridge University Press.
- Morris, DRNM. 2012. *Rock art in the Northern Cape: the implications of variability in engravings and paintings relative to issues of social context and change in the precolonial past*. PhD diss., University of the Western Cape.
- Ouzman, S. 1996. Thaba Sione: place of rhinoceroses and rock art. *African Studies* 55: 31-59.
- Ouzman, S. 2001. Seeing is deceiving: rock art and the non-visual. *Archaeology and Aesthetics* 33: 237-256.
- Ouzman, S. 2002. Black or white? The identification and significance of rhinoceroses in South African Bushman rock art. *The Digging Stick* 19(2): 9-12.
- Pelsler, A. 2005. Travelling through time: archaeology and the Vredefort Dome. In Reimold, W.U. & Gibson, R.L. (eds) *Meteorite Impact! The danger from space and South Africa's mega-impact*. Johannesburg: Chris van Rensburg Publications.
- Pistorius, JCC. 1992. Molokwane: an Iron Age Bakwena Village. Johannesburg: Perskor.
- Pistorius, JCC. 1994. Molokwane, a seventeenth century Tswana village. *South African Journal of Ethnology* 17 (2):38-53.

- Sadr, K. 2012. *Archaeological Excavations at Holkrans Rock Shelter, Vredefort Dome, North West Province*. Wits University Archaeology Field School July 2011 - September 2012. SAHRIS report.
- Seddon, JD. 1968. An aerial survey of settlement and living patterns in the Transvaal Iron Age: preliminary report. *African Studies* 27(4) :189-194.
- Steyn, G. 2011. The spatial patterns of Tswana stone-walled towns in perspective. SAJAH, ISSN 0258-3542, 26(2): 101-125.
- Schmidt, B. 2001. Messages from the Past. The Rock Art of Eastern and Southern Africa. Stone Watch the World of Petro Glyphs.
- The Burra Charter. 2013. The Australia ICOMOS Charter for Places of Cultural Significance.
- World Tourism Organization. 2004. *Tourism and poverty alleviation: recommendations for action*.3