

PHASE 1 HERITAGE RESOURCES SCOPING REPORT

MALOGENG DEMARCATION LIMPOPO PROVINCE

AGES Environmental Services
120 Marshall Street
Polokwane
0699

Att: H Von Well

11 April 2013

Liesl Stegmann and Frans E. Roodt
Under the supervision of Frans
Roodt
April 2013

SHASA HERITAGE CONSULTANTS cc

Liesl Stegmann 073 216 9912
shasa-heritage@mtn.blackberry.com

54 Wildebeestfontein S/H
Polokwane
0699

Frans Roodt 072 544 6611
shasa-heritage@mobileemail.vodafonesa.co.za

PO BOX 1600
Polokwane
0700

CONTENTS

3	1 Introduction and terms of Reference
4	2 Method
	2.1 Sources of information and methodology
	2.2 Limitations
	2.3 Categories of significance
5	2.4 Terminology
5	3 Description of the proposed development and terrain
6	4 Results of the scoping survey and discussion
	4.1. Intangible Heritage and Social consultation
	4.2 Recent Historical Period
	4.3. Graves
	4.4. Iron Age remains
	4.5. Stone Age remains
6	5 Background information
8	7 Bibliography
	<u>List of figures</u>
7	Fig 1. View of historical foundation
7	Fig 2. Hut-floor 4
7	Fig 3. Hut floor 1 detail
7	Fig 4. Ceramics pieces
8	Fig 5. Ceramic Pieces
8	Fig 6. Lower grinding-stone
8	Fig 7. General view
9	Locality Map

1. INTRODUCTION AND TERMS OF REFERENCE

The application to establish a new township extension constitutes an activity, which may potentially be harmful to heritage resources that may occur in the demarcated area. The National Heritage Resources Act (NHRA - Act No. 25 of 1999) protects all structures and features older than 60 years (section 34), archaeological sites and material (section 35) and graves and burial sites (section 36). In order to comply with the legislation, the Applicant requires information on the heritage resources, and their significance that may occur in the demarcated area. This will enable the Applicant to take pro-active measures to limit the adverse effects that the development could have on such heritage resources.

In terms of the National Heritage Resources Act (1999) the following is of relevance:

Historical remains

Section 34(1) No person may alter or demolish any structure or part of a structure, which is older than 60 years without a permit issued by the relevant provincial heritage resources authority.

Archaeological remains

Section 35(4) No person may, without a permit issued by the responsible heritage resources authority-

(a) destroy, damage, excavate, alter, deface, or otherwise disturb any archaeological or palaeontological site or any meteorite

Burial grounds and graves

Section 36 (3)(a) No person may, without a permit issued by SAHRA or a provincial heritage resources authority-

(c) destroy, damage, alter, exhume, remove from its original position or otherwise disturb any grave or burial ground older than 60 years which is situated outside a formal cemetery administered by a local authority; or

(b) bring onto or use at a burial ground or grave referred to in paragraph (a) or (b) any excavation equipment, or any equipment which assists in detection or recovery of metals.

Culture resource management

Section 38(1) Subject to the provisions of subsection (7), (8) and (9), any person who intends to undertake a development* ...

must at the very earliest stages of initiating such development notify the responsible heritage resources authority and furnish it with details regarding the location, nature, and extent of the proposed development.

***‘development’** means any physical intervention, excavation, or action, other than those caused by natural forces, which may in the opinion of the heritage authority in any way result in a change to the nature, appearance or physical nature of a place, or influence its stability and future well-being, including-

- (a) construction, alteration, demolition, removal or change of use of a place or a structure at a place;
- (b) carry out any works on or over or under a place*;
- (e) any change to the natural or existing condition or topography of land, and
- (f) any removal or destruction of trees, or removal of vegetation or topsoil;

****place** means a site, area or region, a building or other structure* ...”

****structure** means any building, works, device or other facility made by people and which is fixed to the ground, ...”

The author was contracted to undertake a heritage scoping survey of the proposed township extension, Malogeng, Limpopo (Refer to map, South Africa 1:50 000 2429 BD) on the farm Blauwbloemetjeskloof 428 KS. The aim was to determine the presence or not of heritage resources such as archaeological and historical sites and features, graves and places of religious and cultural significance, and to submit appropriate recommendations with regard to the cultural resources management measures that may be required at affected sites / features.

The report thus provides an overview of the heritage resources that may occur in the demarcated area where development is intended. The significance of the heritage resources was assessed in terms of criteria defined in the methodology section. The impact of the proposed development on these resources is indicated and the report recommends mitigation measures that should be implemented to minimize the adverse impact of the proposed development on these heritage resources.

2. METHOD

2.1 Sources of information and methodology

The source of information was primarily the field reconnaissance and referenced literary sources.

A pedestrian survey of selected areas of the demarcated area was undertaken, during which standard methods of observation were applied. As most archaeological material occur in single or multiple stratified layers beneath the soil surface, special attention was given to disturbances, both man-made such as roads and clearings, as well as those made by natural agents such as burrowing animals and erosion. Locations of heritage remains were recorded by means of a GPS (Garmin Etrex 10). Heritage material and the general conditions on the terrain were photographed with a Nikon Coolpix L25 Digital camera.

2.2 Limitations

The scoping survey was thorough, but limitations were experienced due to the fact that archaeological sites are subterranean and only visible when disturbed. Vegetation was moderate and visibility fair. It is thus possible that sites have been missed.

2.3 Categories of significance

The significance of archaeological sites is ranked into the following categories.

• No significance: sites that do not require mitigation.
• Low significance: sites, which <i>may</i> require mitigation.
• Medium significance: sites, which require mitigation.
• High significance: sites, which must not be disturbed at all.

The significance of an archaeological site is based on the amount of deposit, the integrity of the context, the kind of deposit and the potential to help answer present research questions. Historical structures are defined by Section 34 of the National Heritage Resources Act, 1999, while other historical and cultural significant sites, places and features, are generally determined by community preferences.

A crucial aspect in determining the significance and protection status of a heritage resource is often whether or not the sustainable social and economic benefits of a proposed development outweigh the conservation issues at stake. Many aspects must be taken into consideration when determining significance, such as rarity, national significance, scientific importance, cultural and religious significance, and not least, community preferences. When, for whatever reason the protection of a heritage site is not deemed necessary or practical, its research potential must be assessed and mitigated in order to gain data / information which would otherwise be lost. Such sites must be adequately recorded and sampled before being destroyed. These are generally sites graded as of low or medium significance.

2.4 Terminology

- Early Stone Age:** Predominantly the Acheulean hand axe industry complex dating to + 1Myr yrs – 250 000 yrs. before present.
- Middle Stone Age:** Various lithic industries in SA dating from ± 250 000 yr. - 30 000 yrs. before present.
- Late Stone Age:** The period from ± 30 000-yr. to contact period with either Iron Age farmers or European colonists.
- Early Iron Age:** Most of the first millennium AD
- Middle Iron Age:** 10th to 13th centuries AD
- Late Iron Age:** 14th century to colonial period. *The entire Iron Age represents the spread of Bantu speaking peoples.*
- Historical:** Mainly cultural remains of western influence and settlement from AD1652 onwards – mostly structures older than 60 years in terms of Section 34 of the NHRA, though more recent remains can be termed historically significant should the remains hold social significance for the local community.
- Phase 1 assessment:** Scoping surveys to establish the presence of and to evaluate heritage resources in a given area
- Phase 2 assessments:** In depth culture resources management studies which could include major archaeological excavations, detailed site surveys and mapping / plans of sites, including historical / architectural structures and features. Alternatively, the sampling of sites by collecting material, small test pit excavations or auger sampling is required.
- Sensitive:** Often refers to graves and burial sites although not necessarily a heritage place, as well as ideologically significant sites such as ritual / religious places. *Sensitive* may also refer to an entire landscape / area known for its significant heritage remains.

3. DESCRIPTION OF THE PROPOSED DEVELOPMENT AND TERRAIN

The area is for a proposed township extension to the village of Malogeng. The area is currently used for grazing and there are a few informal houses already on site.

4. RESULTS OF THE SCOPING SURVEY AND DISCUSSION

4.1 INTANGIBLE HERITAGE AND SOCIAL CONSULTATION

No areas of significance were noted in the area.

4.2 HISTORICAL PERIOD

Some historical remains were recorded on the development area.

Site 1. Historical period hut foundation remains: $S24^{\circ} 18' 56.9''$ $E29^{\circ} 46' 55.2''$



Fig 1. view of historical foundation

Significance - Low

4.3 GRAVES

No graves were noted on the site, however there is always a possibility of graves around historical sites as well as the Iron Age site noted below.

4.4 IRON AGE REMAINS

A large Doornkop site was recorded.

The *Doornkop facies* belongs to the Kalunda Tradition and is part of the Happy Rest Sub-branch. It dates to between AD 750 to AD 1000.

The site has significance due to the size and the fact that four hut-floors were recorded. It is not that common to find floors and other features on sites dating to this period in the archaeological past. The site also had a high concentration of ceramic pieces.

Hut-floors 1: S24° 19' 12.5" E29° 46' 57.6"
2: S24° 19' 12.9" E29° 46' 57.5"
3: S24° 19' 17.4" E29° 46' 55.9"
4: S24° 19' 13.3" E29° 46' 54.9"



Fig 2. Hut-floor 4



Fig 3. Hut-floor1 detail



Fig 4. Ceramic pieces



Fig 5. ceramic pieces



Fig 6. Lower grinding-stone



Fig 7. General view

Significance – medium to high

4.5 STONE AGE REMAINS

A low concentration of Middle Stone Age remains were noted across the entire area, it is however not in context with no definite site recorded.

Significance - Low

5. ARCHAEOLOGICAL BACKGROUND INFORMATION

According to the most recent archaeological cultural distribution sequences by Huffman (2007), this area falls within the distribution area of various cultural groupings originating out of both the Urewe Tradition (eastern stream of migration) and the Kalundu Tradition (western stream of migration). The facies that may be present are:

Urewe Tradition:	Kwale Branch -	<i>Mzonjani facies</i>	AD 450 to 750.
	Moloko Branch –	<i>Icon facies</i>	AD 1300 – 1500.
		<i>Marateng facies</i>	AD 1650 to 1840.
Kalunda Tradition:	Happy Rest sub-branch –	<i>Doornkop facies</i>	AD 750 to 1000.
		<i>Klingbiel facies</i>	AD 1000 to 1200.
		<i>Letaba facies</i>	AD 1600 – 1840.

6. DISCUSSION AND RECOMMENDATIONS

The historic period sites are of little significance, the only concern might be that there could be undetected graves in which case the heritage officials should be contacted.

The Iron Age site is of medium to high significance due to the type of remains found as well as possible research questions that it could help to answer.

The town planner has been consulted and the entire mid-section (see map 1 below) has been designated a heritage area that cannot be developed in future. It is also recommended that the area be cordoned off with fencing to protect the area from village activities that may affect the

integrity of the site. Furthermore, a wide buffer zone to the site has been allowed for, to further protect the site.

The discovery of previously undetected subterranean heritage remains on the terrain must be reported to the Limpopo Heritage Authority or the archaeologist, and may require further mitigation measures.

7. BIBLIOGRAPHY

Huffman, T.N. 2007. *Handbook to the Iron Age. The Archaeology of Pre-colonial Farming Societies in Southern Africa.* University of KwaZulu-Natal Press.



LIESL STEGMANN

FRANS E ROODT



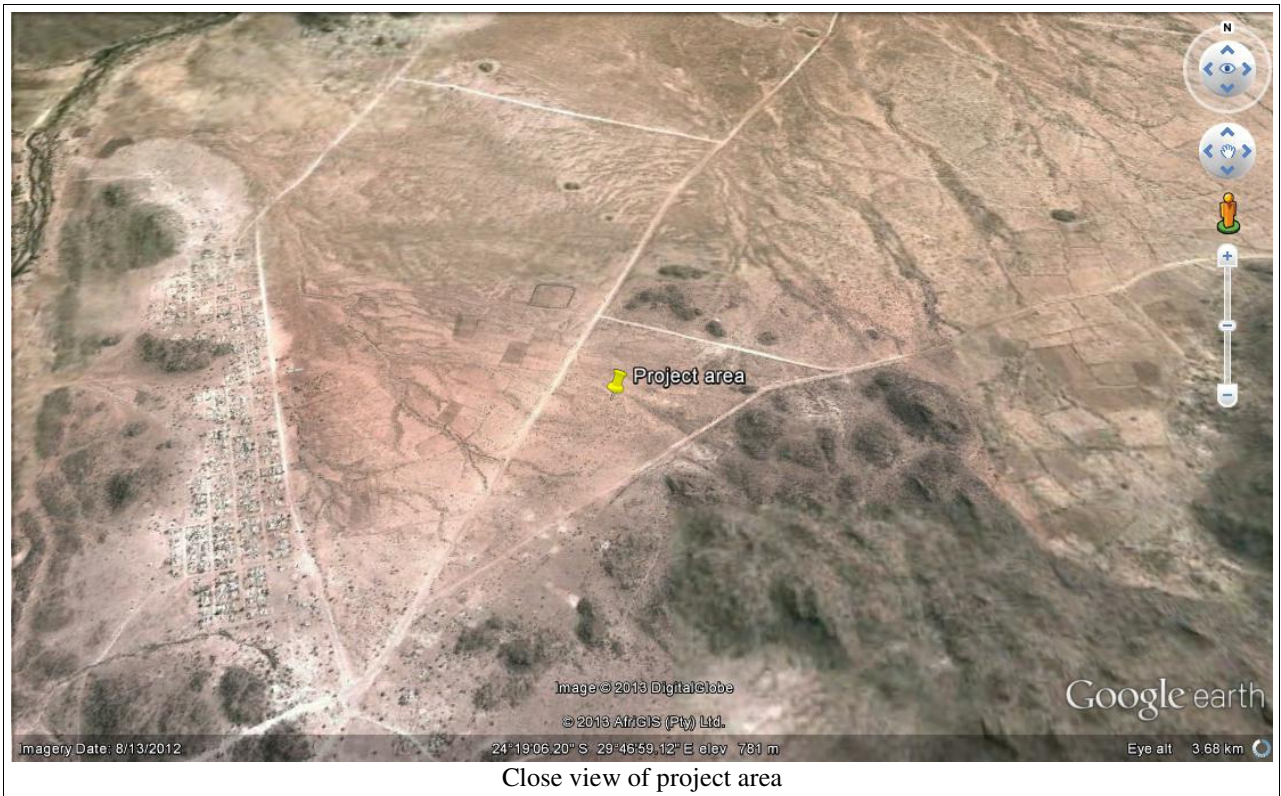
FRANS ROODT (BA Hons, MA Archaeology, Post Grad. Dip. Museology; UP)
Principal Investigator for SHASA Heritage Consultants



Map 1. Demarcation of heritage material recorded on site



Project area with the wider area



Close view of project area