



Amafa aKwazulu-Natali
195 Jabu Ndlovu Street Pietermaritzburg 3200
Telephone 033 3946 543
bernadetp@amafapmb.co.za

01 September 2013

Attention Bernadet Pawandiwa

Dear Ms Pawandiwa

**Application for Exemption from a Phase 1 Heritage Impact Assessment for the Proposed Marula Pack House and Jam Processing Plant, uMhlababuyalingana Local Municipality, Northern Kwazulu-Natal
(DEA Ref: 14/12/16/3/3/1/960)**

Project description

The Department of Public Works is planning to design and build a Marula Pack House facility to process Marula fruit into jam within the uMhlababuyalingana Local Municipality near the town of Manguzi in Northern KwaZulu-Natal. The project, which is funded by the KwaZulu-Natal Department of Agriculture and Environmental Affairs (Agriculture Section), is aimed at increasing the yield and production of Marula products through the provision of a mechanized facility. The overall objective is to optimize economic opportunities and job creation within the region.

Marula Fruit Collection

The Marula fruit will be sourced from informal farms within the region (approximately 30 km radius from the proposed pack house) from January to March annually, when the Marula fruit is collected from the surrounding areas. This fruit will then be packed into crates and collected by a vehicle supplied by the Department of Agriculture for delivery to the Marula Pack House.

Process Overview

On arrival at the Marula Pack House, the fruit will be washed and cleaned, and then placed in cold storage before processing. The fruit will then be removed from the cold storage and cut open to remove the jacket and the pip. The flesh from the fruit will then be cooked in 25 litre pots to form the Marula Jam which will then be bottled on site and labelled prior to distribution.

In an effort to maximise the benefits from the Marula fruit and maximise the potential by-products from the jam processing plant, the pip from the fruit will be dried and ground into a powder, which is used as a thickening agent in gravy powder. Investigations are also underway to ascertain the suitability of the fruit jacket (skin) as a composting agent and the possibility of pressing the pip to extract Marula Oil.

Site assessment and recommendations

The proposed Marula Pack House will be located to the west of the R22, approximately 12 km southwest of the town of Manguzi. The site selected for the pack house consists of a fenced-in area previously used as a rural sports stadium and is currently not utilised and is falling into a state of disrepair (Figure 1).

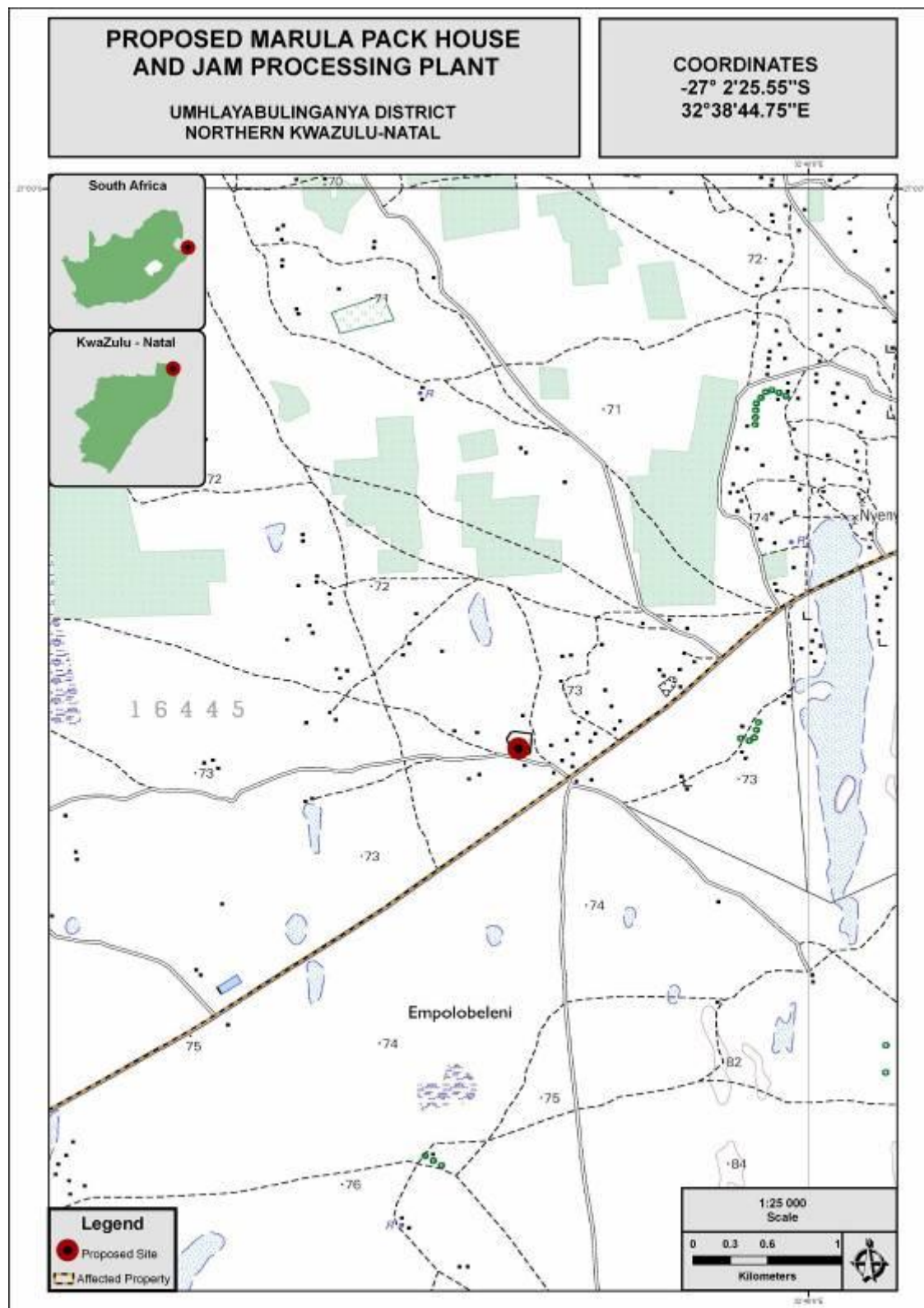


Figure 1 Location of the proposed Marula Pack House and Jam Processing Facility

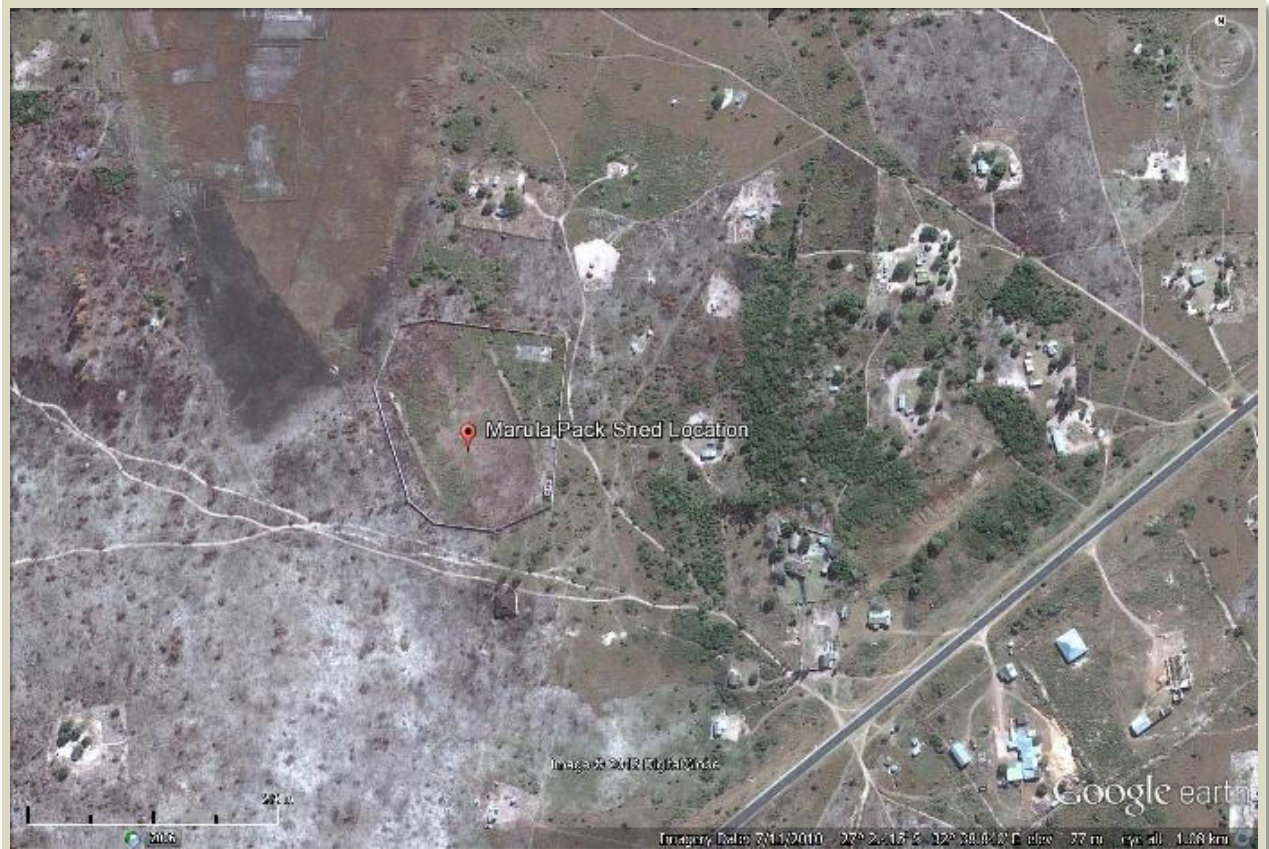


Figure 2 Google image of location of proposed Marula Pack Shed

eThembeni Cultural Heritage has previously conducted both water reticulation and electrical power line surveys in the immediate area and are confident that no heritage resources of any significance are expected to occur. We recommend, therefore, that no further heritage resource intervention is required.

Please could you convey Amafa's decision on this matter to the appointed Environmental Practitioner, Mr Giles Churchill, of **ACER (Africa) Environmental Management Consultants**.

giles.churchill@acerafrica.co.za

Yours sincerely

Len van Schalkwyk *Elizabeth Wahl*

Len van Schalkwyk and Elizabeth Wahl

