
Phase 1 Heritage Impact Assessment Report

HERITAGE IMPACT ASSESSMENT FOR THE
PROPOSED DEVELOPMENT OF THE MTUBATUBA
CEMETERY WITHIN THE MTUBATUBA LOCAL AND
UMKHANYAKUDE DISTRICT MUNICIPALITIES,
KWAZULU-NATAL.

PREPARED BY:



PREPARED FOR:



CREDIT SHEET

Project Director

STEPHAN GAIGHER (BA Hons, Archaeology, UP)

Principal Investigator for G&A Heritage

Member of ASAPA (Site Director Status)

Tel: (015) 516 1561

Cell: 073 752 6583

E-mail: stephan@gaheritage.co.za

Website: www.gaheritage.co.za

Report Author

STEPHAN GAIGHER

***Disclaimer;** Although all possible care is taken to identify all sites of cultural importance during the investigation of study areas, it is always possible that hidden or sub-surface sites could be overlooked during the study. G&A Heritage and its personnel will not be held liable for such oversights or for costs incurred as a result of such oversights.*

Statement of Independence

As the duly appointed representative of G&A Heritage, I Stephan Gaigher, hereby confirm my independence as a specialist and declare that neither I nor G&A Heritage have any interests, be it business or otherwise, in any proposed activity, application or appeal in respect of which the Environmental Consultant was appointed as Environmental Assessment Practitioner, other than fair remuneration for work performed on this project.

SIGNED OFF BY: STEPHAN GAIGHER



MANAGEMENT SUMMARY

Site name and location: Proposed Development of the Mtubatuba Cemetery.

Municipal Area: Mtubatuba Local Municipality, Umkhanyakude District Municipality

Developer: Mtubatuba Local Municipality

Consultant: G&A Heritage, PO Box 522, Louis Trichardt, 0920, South Africa.
38A Vorster St, Louis Trichardt, 0920

Date of Report: 2 December 2016

The purpose of the management summary is to distil the information contained in the report into a format that can be used to give specific results quickly and facilitate management decisions. It is not the purpose of the management summary to repeat in shortened format all the information contained in the report, but rather to give a statement of results for decision making purposes.

This study focuses on the proposed development of the Mtubatuba Cemetery within the Mtubatuba Local and Umkhanyakude District Municipalities in KwaZulu-Natal.

This study encompasses the heritage impact investigation. A preliminary layout has been supplied to lead this phase of this study.

Scope of Work

A Heritage Impact Assessment (including Archaeological, Cultural heritage, Built Heritage and Paleontology) to determine the impacts on heritage resources within the study area.

The following are the required to perform the assessment:

- A desk-top investigation of the area;
- A site visit to the proposed development site;
- Identify possible archaeological, cultural, historic, built and paleontological sites within the proposed development area;
- Evaluate the potential impacts of construction and operation of the proposed development on archaeological, cultural, historical resources; built and paleontological resources; and
- Recommend mitigation measures to ameliorate any negative impacts on areas of archaeological, cultural, historical, built and paleontological importance.

The purpose of this study is to determine the possible occurrence of sites with cultural heritage significance within the study area. The study is based on archival and document combined with fieldwork investigations.

Findings & Recommendations

The area was investigated during a field visit and through archival studies. No site of any heritage potential was documented

Fatal Flaws

No fatal flaws were identified.

TABLE OF CONTENTS

Introduction	9
Background Information	12
Mtubatuba Cemetery	12
Project Description	12
Project Location	12
GPS Track Paths	15
Regional Cultural Context	16
Paleontology	16
Stone Age	16
Iron Age	17
The Historic Era	18
Cultural Landscape	19
Previous Studies	19
Findings	19
Fieldwork Results	19
Results of Archival Study	20
Methodology	22
Inventory	22
Evaluating Heritage Impacts	22
Fieldwork	22
Measuring Impacts	23
TYPE OF RESOURCE	23
TYPE OF SIGNIFICANCE	23
HISTORIC VALUE	24
AESTHETIC VALUE	24

SCIENTIFIC VALUE	24
SOCIAL VALUE / Public Significance	25
Ethnic Significance	26
Economic Significance	26
Scientific Significance.....	26
Historic Significance	26
Public Significance	26
Other	26
DEGREES OF SIGNIFICANCE.....	27
Significance Criteria	27
RARITY.....	27
REPRESENTIVITY	28
Assessment of Heritage Potential.....	28
Assessment Matrix.....	28
DETERMINING ARCHAEOLOGICAL SIGNIFICANCE.....	28
Assessing site value by attribute	29
Impact Statement	29
Assessment of Impacts.....	29
Indicators of Impact Severity	30
Paleontological sites.....	31
Post-Contact Sites.....	31
Built Environment	31
Historic Significance	31
Architectural Significance.....	31
Spatial Significance	32
Impact Evaluation	32
Determination of Significance of Impacts.....	32
Impact Rating System.....	32
Rating System Used to Classify Impacts	33

2016/12/02

Anticipated Impact of the Development.....	36
Assessing Visual Impact.....	36
Assumptions and Restrictions	37
Assessment of Impacts	37
Impact Statement	37
Paleontological sites.....	37
Built Environment	37
Cultural Landscape	37
Resource Management Recommendations	39
Conclusion	39
References Cited.....	40

LIST OF FIGURES

Figure 1. Location Map of Mtubatuba Cemetery (Topographical Map 2832 AC 2005)	12
Figure 2. Google Earth Image of the Location of the Proposed Mtubatuba Cemetery	13
Figure 3. Mtubatuba Cemetery Location	13
Figure 4. Fence around site.....	14
Figure 5. Study area.....	14
Figure 6. GPS Track Path.....	15
Figure 7. Historical Topographical Map 2832 AC 1999	20
Figure 8. Historical Topographical Map 2832 AC 1966	20
Figure 9. Historical Topographical Map 2832 SC 1943	21

LIST OF ABBREVIATIONS

Bp.....	Before Present
DoT	Department of Transport
EIA	Early Iron Age
ESA.....	Early Stone Age
Fm	Femtometre (10^{-15} m)
GPS.....	Geographic Positioning System
HIA	Heritage Impact Assessment
KZN	KwaZulu-Natal
LIA.....	Late Iron Age
LSA	Late Stone Age
MYA	Million Years Ago
MSA	Middle Stone Age
NHRA.....	National Heritage Resources Act no 22 of 1999
SAHRA.....	South African Heritage Resource Agency
S&EIR	Scoping & Environmental Impact Reporting
Um.....	Micrometre (10^{-6} m)
WGS 84	World Geodetic System for 1984

HERITAGE IMPACT REPORT

HERITAGE IMPACT ASSESSMENT REPORT FOR THE PROPOSED DEVELOPMENT OF THE MTUBATUBA CEMETERY.

INTRODUCTION

Legislation and methodology

G&A Heritage was appointed by Sinohydro Consultants (Pty) Ltd to undertake a heritage impact assessment for the proposed development of Mtubatuba Cemetery within the Mtubatuba Local and Umkhanyakude District Municipalities in KwaZulu-Natal.

Section 38(1) of the South African Heritage Resources Act (25 of 1999) requires that a heritage study is undertaken for:

- (a) Construction of a road, wall, power line, pipeline, canal or other similar form of linear development or barrier exceeding 300 m in length;
- (b) Construction of a bridge or similar structure exceeding 50 m in length; and
- (c) Any development, or other activity which will change the character of an area of land, or water –
 - (1) Exceeding 10 000 m² in extent;
 - (2) Involving three or more existing erven or subdivisions thereof; or
 - (3) Involving three or more erven, or subdivisions thereof, which have been consolidated within the past five years; or
 - (d) The costs of which will exceed a sum set in terms of regulations; or
 - (e) Any other category of development provided for in regulations.

While the above describes the parameters of developments that fall under this Act., Section 38 (8) of the NHRA is applicable to this development. This section states that;

- (8) *The provisions of this section do not apply to a development as described in subsection (1) if an evaluation of the impact of such development on heritage resources is required in terms of the Environment Conservation Act, 1989 (Act 73 of 1989), or the integrated environmental management guidelines issued by the Department of Environment Affairs and Tourism, or the Minerals Act, 1991 (Act 50 of 1991), or any other legislation: Provided that the consenting authority must ensure that the evaluation fulfils the requirements of the relevant heritage resources authority in terms of subsection (3), and any comments and recommendations of the relevant heritage resources authority with regard to such development have been taken into account prior to the granting of the consent.*

In regards to a development such as this that falls under Section 38 (8) of the NHRA, the requirements of Section 38 (3) applies to the subsequent reporting, stating that;

- (3) *The responsible heritage resources authority must specify the information to be provided in a report required in terms of subsection (2) (a): Provided that the following must be included:*
 - (a) *The identification and mapping of all heritage resources in the area affected;*
 - (b) *An assessment of the significance of such resources in terms of the heritage assessment criteria set out in section 6 (2) or prescribed under section 7;*
 - (c) *An assessment of the impact of the development on such heritage resources;*

- (d) An evaluation of the impact of the development on heritage resources relative to the sustainable social and economic benefits to be derived from the development;*
- (e) The results of consultation with communities affected by the proposed development and other interested parties regarding the impact of the development on heritage resources;*
- (f) If heritage resources will be adversely affected by the proposed development, the consideration of alternatives; and*
- (g) Plans for mitigation of any adverse effects during and after the completion of the proposed development.*
 - (1) Ancestral graves,
 - (2) Royal graves and graves of traditional leaders,
 - (3) Graves of victims of conflict (iv) graves of important individuals,
 - (4) Historical graves and cemeteries older than 60 years, and
 - (5) Other human remains which are not covered under the Human Tissues Act, 1983 (Act No.65 of 1983 as amended);
- (h) Movable objects, including ;
 - (1) Objects recovered from the soil or waters of South Africa including archaeological and paleontological objects and material, meteorites and rare geological specimens;
 - (2) Ethnographic art and objects;
 - (3) Military objects;
 - (4) Objects of decorative art;
 - (5) Objects of fine art;
 - (6) Objects of scientific or technological interest;
 - (7) Books, records, documents, photographic positives and negatives, graphic, film or video material or sound recordings; and
 - (8) Any other prescribed categories, but excluding any object made by a living person;
- (i) Battlefields;
- (j) Traditional building techniques.

A **'place'** is defined as:

- (a) A site, area or region;
- (b) A building or other structure (which may include equipment, furniture, fittings and articles associated with or connected with such building or other structure);
- (c) A group of buildings or other structures (which may include equipment, furniture, fittings and articles associated with or connected with such group of buildings or other structures); and (d) an open space, including a public square, street or park; and in relation to the management of a place, includes the immediate surroundings of a place.

'Structures' means any building, works, device, or other facility made by people and which is fixed to land and any fixtures, fittings and equipment associated therewith older than 60 years.

'Archaeological' means:

- (a) Material remains resulting from human activity which are in a state of disuse and are in or on land and are older than 100 years, including artefacts, human and hominid remains and artificial features and structures;
- (b) Rock art, being a form of painting, engraving or other graphic representation on a fixed rock surface or loose rock or stone, which was executed by human agency and is older than 100 years including any area within 10 m of such representation; and
- (c) Wrecks, being any vessel or aircraft, or any part thereof, which was wrecked in South Africa, whether on land or in the maritime cultural zone referred to in section 5 of the Maritime Zones Act 1994 (Act 15 of 1994), and any cargo, debris or artefacts found or associated therewith, which are older than 60 years or which in terms of national legislation are considered to be worthy of conservation;
- (d) Features, structures and artefacts associated with military history which are older than 75 years and the sites on which they are found.

'Paleontological' means any fossilised remains or fossil trace of animals or plants which lived in the geological past, other than fossil fuels or fossiliferous rock intended for industrial use, and any site which contains such fossilised remains or trace.

'Grave' means a place of interment and includes the contents, headstone or other marker of and any other structures on or associated with such place. The South African Heritage Resources Agency (SAHRA) will only issue a permit for the alteration of a grave if it is satisfied that every reasonable effort has been made to contact and obtain permission from the families concerned.

The removal of graves is subject to the following procedures as outlined by the SAHRA:

- Notification of the impending removals (using English, Afrikaans and local language media and notices at the grave site);
- Consultation with individuals or communities related or known to the deceased;
- Satisfactory arrangements for the curation of human remains and / or headstones in a museum, where applicable;
- Procurement of a permit from the SAHRA;
- Appropriate arrangements for the exhumation (preferably by a suitably trained archaeologist) and re-interment (sometimes by a registered undertaker, in a formally proclaimed cemetery);
- Observation of rituals or ceremonies required by the families.

The limitations and assumptions associated with this heritage impact assessment are as follows;

- Field investigations were performed on foot and by vehicle where access was readily available.
- Sites were evaluated by means of description of the cultural landscape, direct observations and analysis of written sources and available databases.
- It was assumed that the site layout as provided by Sinohydro Consultants is accurate.
- We assumed that the public participation process performed as part of the Basic Assessment process was sufficiently encompassing not to be repeated in the Heritage Assessment Phase.

Table 1. Impacts on the NHRA Sections

Act	Section	Description	Possible Impact	Action
National Heritage Resources Act (NHRA)	34	Preservation of buildings older than 60 years	No impact	None
	35	Archaeological, paleontological and meteor sites	Yes	Monitoring
	36	Graves and burial sites	Yes	HIA
	37	Protection of public monuments	No impact	None
	38	Does activity trigger a HIA?	Yes	HIA

Table 2. NHRA Triggers

Action Trigger	Yes/No	Description
Construction of a road, wall, power line, pipeline, canal or other linear form of development or barrier exceeding 300m in length.	No	N/A
Construction of a bridge or similar structure exceeding 50m in length.	No	N/A
Development exceeding 5000 m ²	Yes	Mtubatuba Cemetery
Development involving more than 3 erven or sub divisions	No	N/A
Development involving more than 3 erven or sub divisions that have been consolidated in the past 5 years	No	N/A
Re-zoning of site exceeding 10 000 m ²	Yes	Mtubatuba Cemetery
Any other development category, public open space, squares, parks or recreational grounds	Yes	Mtubatuba Cemetery

BACKGROUND INFORMATION

MTUBATUBA CEMETERY

PROJECT DESCRIPTION

The Mtubatuba Local Municipality proposes develop the Mtubatuba Cemetery within the Mtubatuba Local and Umkhanyakude District Municipalities.

PROJECT LOCATION

The proposed Mtubatuba Cemetery is located within the Mtubatuba Local and Umkhanyakude District Municipalities near the R618 Regional Route and the A2074 Road.

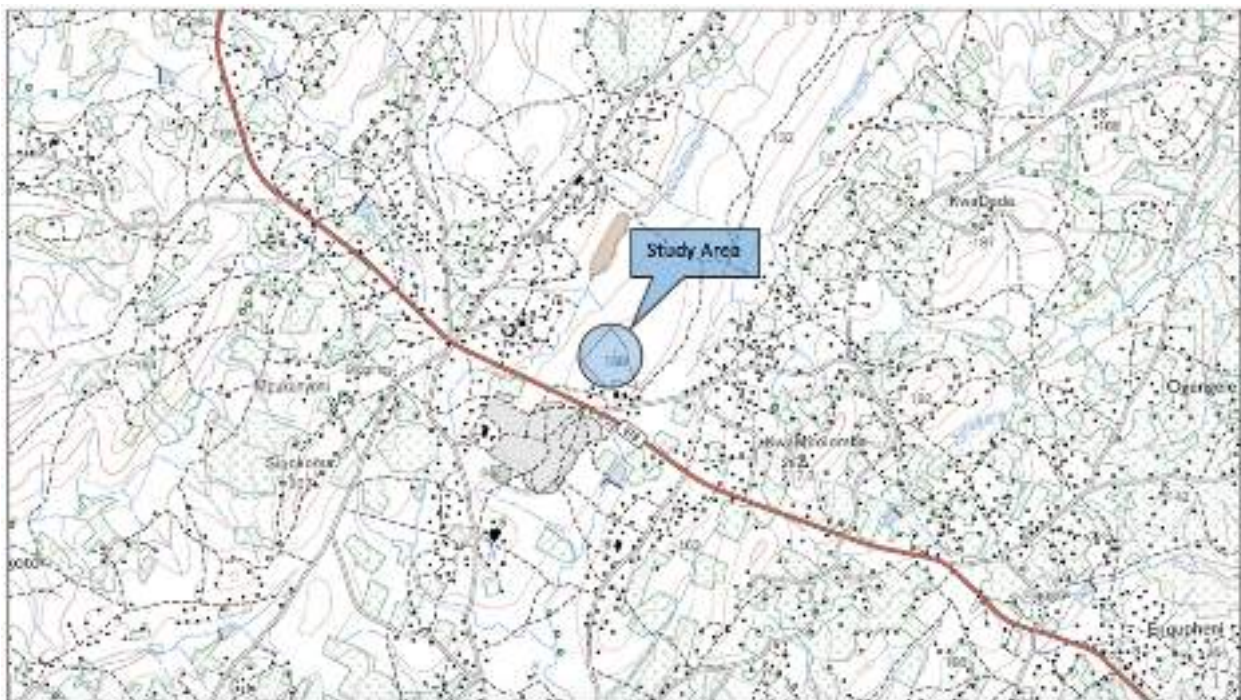


Figure 1. Location Map of Mtubatuba Cemetery (Topographical Map 2832 AC 2005)

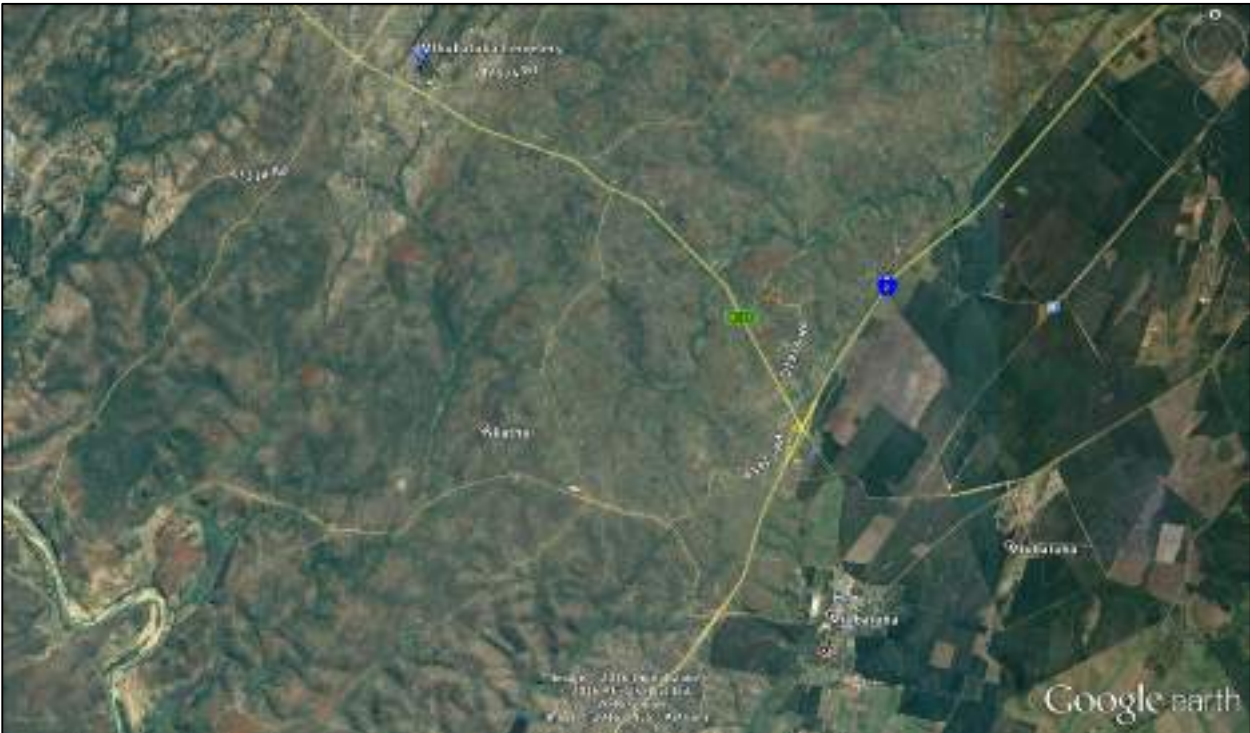


Figure 2. Google Earth Image of the Location of the Proposed Mtubatuba Cemetery



Figure 3. Mtubatuba Cemetery Location



Figure 4. Fence around site



Figure 5. Study area

GPS TRACK PATHS



Figure 6. GPS Track Path

GPX files are available from G&A Heritage on request.

HERITAGE INDICATORS WITHIN THE RECEIVING ENVIRONMENT

REGIONAL CULTURAL CONTEXT

PALEONTOLOGY

The Western Shores of Lake St. Lucia are rich in ancient marine fossils. Reports indicate that this area started forming during the Cretaceous (Chalk period), approximately 140 million years ago. There were two phases - the most recent formations were caused by dropping sea levels starting a mere two million years ago to create the largest estuarine lake in the World.

Paleontological remains occur in the Cretaceous layer underlying the study area. These are of high significance but should not be impacted on as the ground intrusion is very limited and bedrock is not expected to be disturbed.

STONE AGE

The first evidence of human occupation in the St Lucia area dates back to the Stone Age. People of Middle and Late Stone Age cultures may have inhabited the St Lucia area probably for as long as 110,000 years. Evidence of shell middens on the St Lucia coast testify to extensive use of black mussels (*Perna perna*) for food.

This area is home to all three of the known phases of the Stone Age, namely: the Early- (2.5 million – 250 000 years ago), Middle- (250 000 – 20 000 years ago) and Late Stone Age (22 000 – 200 years ago). The Late Stone Age in this area also contains sites with rock art from the San and Khoekhoen cultural groups. Early to Middle Stone Age sites are uncommon in this area, however rock-art sites and Late Stone Age sites are much better known.

During the Middle Stone Age, 200 000 years ago, modern man or *Homo sapiens* emerged, manufacturing a wider range of tools, with technologies more advanced than those from earlier periods. This enabled skilled hunter-gatherer bands to adapt to different environments. From this time onwards, rock shelters and caves were used for occupation and reoccupation over very long periods of time.

The Middle Stone Age (MSA), as defined by Goodwin and Van Riet Lowe (1929), was viewed as a switch in technology from core tools to flake tools, and was thought to represent an intermediate technology between the Earlier and Later Stone Age (LSA). Triangular flakes with convergent dorsal scars and faceted butts distinguished the MSA, and radial and discoidal types, along with single and double platform examples, dominated cores. The 'type fossil' was considered to be the worked flake point. Due to both the relatively long time span encompassed by the MSA (c. 250 000-20 000BP) and the high degree of regional variation, it has proved difficult to include all MSA assemblages within Goodwin and Van Riet Lowe's criteria. More recent attempts have been made to revise the definition of the MSA (Klein 1970; Beaumont & Vogel 1972; Volman 1984) and to establish a cultural sequence but with limited success. As a result identifying and understanding the end of the MSA is still difficult. Disagreement concerning the MSA/LSA transition in southern Africa centres on four issues: 1) the definition of what constitutes final MSA technology; 2) the existence of a transitional MSA/LSA industry; 3) the dating of the MSA/LSA transition; and 4) the existence of an Early LSA (ELSA) which represents a distinct industry that is not part of the earliest recognized LSA, the Robberg (Clark, 1997).

1985 excavation at Umhlatuzana rock shelter in Natal by Kaplan yielded a long and detailed sequence of stone artefacts, which covered the time range from the Middle Stone Age (MSA) to the Later Stone Age (LSA), including the MSA/LSA transition, and early LSA microlithic bladelet assemblages. The change from the MSA to the beginning of the LSA took place between 35 000 and 25 000 BP. Robberg-like assemblages recovered from Umhlatuzana are the first to be positively identified in Natal. Pre-dating 18 000 BP and post-dating 12 000 BP, they show that assemblages of this nature were produced earlier and later in Natal than elsewhere in the country. Changes in the Umhlatuzana stone artefact assemblages were not the result of the introduction from elsewhere of new types of tools, but took place locally, as the result of a single evolving cultural tradition in a trajectory of cultural and social change (Kaplan, 1986).

Recent research by Wadley on the Middle Stone Age of Sibudu Cave north of Durban indicated that distinctions between the Middle Stone Age and the Late Stone Age based on backed blades could be misleading (Wadley, 2005). Although research on MSA sites is limited, this research illustrates the potential value of investigating Stone Age sites in KZN closer.

The Late Stone Age, considered to have started some 20 000 years ago, is associated with the predecessors of the San and Khoi Khoi. Stone Age hunter-gatherers lived well into the 19th century in some places in SA. Stone Age sites may occur all over the area where an unknown number may have been obliterated by mining activities, urbanisation, industrialisation, agriculture and other development activities during the past decades.

A large representation of Rock-Art sites is located in this area. During 1981 Mazel completed a survey of the Drakensberg and Southern Natal and documented over 400 rock art sites with more than 20 000 paintings (Mazel, 1981). The occurrence of these sites is however subject to very specific environmental parameters, none of which are present in the study area.

IRON AGE

The Maputaland plain which includes the area of St Lucia was settled by agriculturists in the early and late Iron Ages (250-1840 AD). Due to the prevalence of malaria and the cattle disease trypanosomiasis, carried by the tsetse fly *Glossina*, the St Lucia area was mostly uninhabited but for small scattered settlements of the Sokhulu people present between Sodwana and the St Lucia estuary, evidenced by several traditional burial sites. These people smelted bog iron, felling trees to produce charcoal for their smelters (Taylor, 1980). Little is known about the nature of further human settlements until the early nineteenth century, when the St Lucia area was sparsely occupied by the Nguni-speaking people who subsequently came under Zulu domination (Wright & Hamilton, 1989).

During the third century AD, several groups of farming peoples from eastern and south central Africa began to settle along the east coast and river valleys that drain into the Indian Ocean (Maggs 1984a, 1989; Mitchell 2002). In eastern South Africa, these early farmers display a strong preference for settling a savannah environment along major water bodies where annual precipitation from 400 to over 1000mm provided adequate moisture for grain production. Over thirty EIA identified settlements in the Thukela Basin are clustered on discontinuous patches of rich colluvial soils within a short distance of the edge of the Thukela River or its tributaries. EIA settlements were initially established in the coastal forest in the fifth century AD and later in the savannah woodland belt alongside rivers in the (seventh century AD). The opening of riverine forest and woodlands by EIA farmers is apparent from the palaeobotanical record, current vegetation distribution (Hall 1981) and settlement distribution in the Thukela Basin. All documented sites are found within 100m of the relic canopy fringe (van Schalkwyk 1992).

EIA sites averaging 7 hectares in size are consistently located on the most productive nodes of soils confined to confluences and colluvial slip-off slopes along the major drainage courses, which comprise only about 9 per cent of the landscape (Maggs 1980: 7).

“Interpretations of the internal spatial organization of EIA sites in southern Africa are complicated by the relatively long use and frequent reoccupation of sites, often over several hundred years (Maggs 1984b, 1989). These reoccupations of the same places have created a palimpsest of flat, expansive settlements, with both superimposed and laterally displaced stratigraphy (Greenfield et al. 2000). Despite this situation, several large-scale horizontal excavations of settlements in the region have demonstrated a

spatial layout of features that are similar to homestead spatial organization derived from nineteenth- and twentieth-century Nguni and Sotho-Tswana ethnography (Kuper 1982), called the Central Cattle Pattern (CCP). This pattern is characterized by domestic residences of the senior man's wives placed in ranked order in an arc or circle around a central area containing livestock pens, the burials of high-status individuals and a court or assembly area where men gather to discuss political matters (Huffman 2001). Archaeologically, a similar pattern is represented by a series of domestic complexes (hut floors, grain bins or pits, ash and other refuse middens) surrounding a series of non-domestic activity areas, including livestock enclosures and specialist activity areas separated by an open space devoid of cultural materials. There is some variation in the size of the open space. At Broederstroom in north-eastern South Africa, the distance between hut floors and a livestock enclosure was as little as 10m (Huffman 1993). At KwaGandaganda in the Mngeni valley in KwaZulu-Natal, the open space was 90m across (Whitelaw 1994), and at Ndondondwane this open space was 60-100m" (Greenfield and van Schalkwyk 2003) (Huskel J, Greenfield, Kent, D, Fowler, & Leonard O, van Schalkwyk, 2005).

As well, faunal evidence suggests that certain species, such as nyala antelope, were forced to shift the range of their habitat after the woodland was opened (Maggs 1995:175). A considerable number of Late Iron Age, stone walled sites, dating from the 18th and the 19th centuries (some of which may have been occupied as early as the 16th century), occur along and on top of the rocky ridges here. These settlements and features in these sites, such as huts, were built with dry stone, reed and clay.

Stone walled settlements are concentrated in clusters of sites and sometimes are dispersed over large areas making them vulnerable to developments of various kinds. A site consists of a circular or elliptical outer wall that is composed of a number of scalloped walls facing inwards towards one or more enclosures. Whilst the outer scalloped walls served as dwelling quarters for various family groups, cattle, sheep and goat were stock in the centrally located enclosures. Huts with clay walls and floors were built inside the dwelling units. Pottery and metal items are common on the sites. However, iron and copper were not produced locally on these sites.

Many of the Iron Age sites are also associated with Zulu encampments. Due to the often semi-nomadic nature of these and the use of removable huts, these sites are often difficult to identify and short term occupational sites might only manifest in some stone circles, use to anchor these structures to the ground.

THE HISTORIC ERA

KwaZulu-Natal is an amalgamation of the 'homeland' territory of KwaZulu (literally 'home of the Zulus') and the province of Natal. The latter was named after the Christmas Day 1497 sighting of the coast by the great Portuguese explorer and navigator, Vasco da Gama. At that time the territory was occupied by clans of the Nguni tribe who had migrated south from central Africa over the previous few centuries.

St Lucia was first named in 1554 - "Rio de la Medaos do Oura" (River of the dows of Gold) by the survivors of the wrecked Portuguese ship, the Saint Benedict. On the day of the Feast of Saint Lucy, 13 December 1575, the Portuguese mariner Manuel Perestrello landed on the beaches and renamed the mouth area Santa Lucia. The next naming phase took place in 1822 when the Royal Navy sent the ships H.M.S. Leven, Barracouta and Cockburn to survey the coastline. Lieutenant A.T.E. Vidal was the captain of this ship, the H.M.S. Leven. Cape Vidal was then named, as well as Leven Point. Later Mission Rocks was named in 1888, when a Catholic Mission was established on the Eastern Shores, approximately 10km north of the St. Lucia mouth. Later Mission Rocks was named in 1888 when LO Feyling, a Norwegian Reverend, established a Catholic mission on the Eastern Shores, approximately 10 km north of the St Lucia mouth.

During the 1880s the British government annexed St Lucia in a move which would foil the Boers from the New Republic in their search for access to the sea. It was after this that land was distributed to settlers and that missions were founded at Mount Tabor, Cape Vidal and Ozabeni.

The 19th century St Lucia and surrounds saw destruction of the wildlife with extensive hunting for ivory, rhino horn and hippo. Fortunately, the ecological significance of the wildlife was recognized and protected

by declaring the St Lucia and the lake area a Nature Reserve in 1897. The original St Lucia Game Reserve is considered the oldest permanently declared reserve in Africa.

Further moves to protect wildlife also took place in 1944 with the addition of False Bay Park to the protected areas, and in 1975 South Africa signed the international RAMSAR Convention to protect wetlands. It was then that the Greater St Lucia Wetland region was declared. More recently, land was recovered by the park in 1987 when the Eastern Shores State Forest was returned to the Natal Parks Board. Conservation measures have continued in the last decade, and many conservation initiatives were introduced when St Lucia won World Heritage status in 1999. One of the most important of these was the controversial national ban on beach driving in February 2002. Species have also been reintroduced, including cheetah and elephant.

In May 2007 the new name for the Greater St Lucia Wetland Park was announced as being iSimangaliso Wetland Park. The new name, meaning "Miracle" will be effective from the 1st of November 2007.

http://www.stluciasa.co.za/sl_history.htm

<http://www.footprinttravelguides.com/africa-middle-east/south-africa/kwazulu-natal/zululand/history-of-isimangaliso-wetland-park/>

CULTURAL LANDSCAPE

The cultural landscape in the study area is strongly associated with rural living and subsistence farming. There is still a strong community feeling here with many ancient traditions still surviving.

PREVIOUS STUDIES

An extensive research into the SAHRIS database resulted in the identification of the following heritage related studies that have been performed over the last decade in the study area. Only studies within a radius of 50km from the study area were considered.

- Prins, F. 2014. Cultural Heritage Impact Assessment of the Proposed Mtubatuba-St Lucia 132 & 22 kV Multi-circuit Powerline and St Lucia 132/22 kV Substation.
- Anderson, G. Anderson, L. 2005. The Archaeological surveys of the Mtubatuba North and South Interchanges.
- Anderson, G. 2008. Archaeological Survey of the Proposed Mtubatuba Developments.
- Anderson, G. 2012. Heritage Survey of the Proposed Kwabhoboza Interchange on National Route 2 Section 30 (Km 5.1) Mtubatuba, KwaZulu-Natal.
- Prins, F. 2016. A Cultural Heritage Impact Assessment of the Proposed Establishment of the Mfolozi Bridge and Associated Road Works near Mtubatuba, Northern KwaZulu-Natal.
- Van Schalkwyk, L. 2016. Application for Exemption from a Phase 1 Heritage Impact Assessment Proposed Redevelopment of the St Lucia Precinct Isimangaliso Wetland Park Mtubatuba Municipality, KwaZulu-Natal.
- Anderson, G. 2001. Final Archaeological Report for the Greater St Lucia Wetland Park: Infrastructure Development Project Phase 1 Archaeological Surveys and Excavations.
- Van Schalkwyk, J. 2003. Archaeological Investigations of the Proposed Electricity Cable Route, Perriers Rock Road Great St Lucia Wetland Park World Heritage Site.
- Wahl, E. Van Schalkwyk, L. 2013. Phase 1 Heritage Impact Assessment Report: Proposed Alternations to the Sodwana Beach Node, iSimangaliso Wetland Park World Heritage Site, The Big 5 False Bay Local Municipality, Umkhanyakude District, KwaZulu-Natal.

FINDINGS

FIELDWORK RESULTS

The study area was fenced and access could be got from the southern entrance. According to local informants the property belongs to a local person and has been fenced for an extended time. No sites of heritage significance could be identified during the fieldwork.

RESULTS OF ARCHIVAL STUDY

None of the historic maps showed any sites of heritage potential.

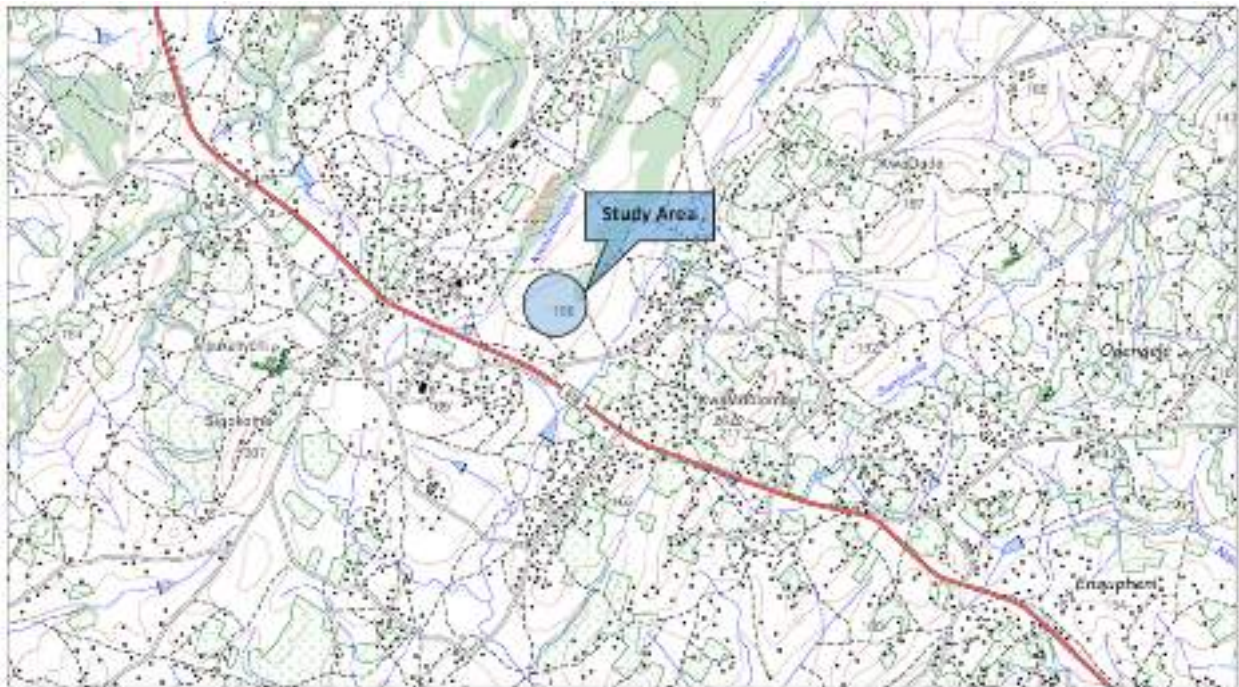


Figure 7. Historical Topographical Map 2832 AC 1999

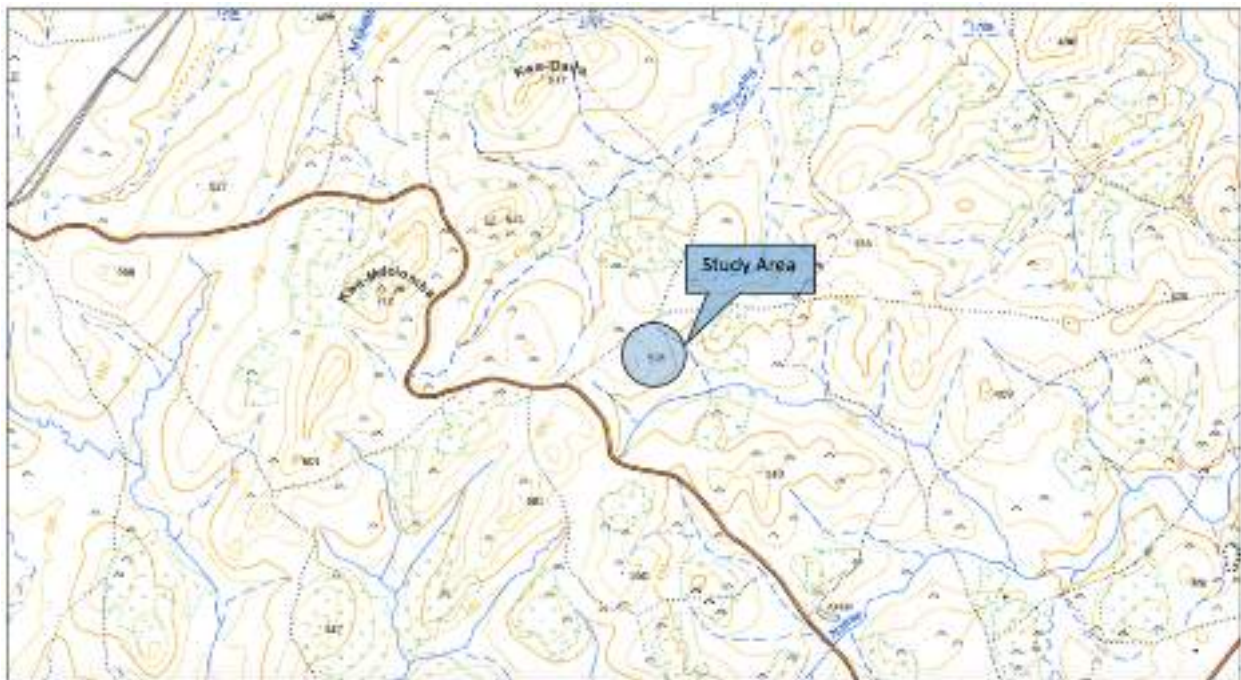


Figure 8. Historical Topographical Map 2832 AC 1966



Figure 9. Historical Topographical Map 2832 SC 1943

Chapter 3

IMPACT ASSESSMENT

METHODOLOGY

This study defines the heritage component of the EIA process being undertaken for the proposed development of the Mtubatuba Cemetery. It is described as a first phase (HIA). This report attempts to evaluate both the accumulated heritage knowledge of the area as well as information derived from direct physical observations.

INVENTORY

Inventory studies involve the in-field survey and recording of archaeological resources within a proposed development area. The nature and scope of this type of study is defined primarily by the results of the overview study. In the case of site-specific developments, direct implementation of an inventory study may preclude the need for an overview.

There are a number of different methodological approaches to conducting inventory studies. Therefore, the proponent, in collaboration with the archaeological consultant, must develop an inventory plan for review and approval by the SAHRA prior to implementation (*Dincause, Dena F., H. Martin Wobst, Robert J. Hasenstab and David M. Lacy 1984*).

EVALUATING HERITAGE IMPACTS

A combination of document research as well as the determination of the geographic suitability of areas and the evaluation of aerial photographs determined which areas could and should be accessed.

After plotting of the site on a GPS the areas were accessed using suitable combinations of vehicle access and access by foot.

Sites were documented by digital photography and geo-located with GPS readings using the WGS 84 datum.

Further techniques (where possible) included interviews with local inhabitants, visiting local museums and information centers and discussions with local experts. All this information was combined with information from an extensive literature study as well as the result of archival studies based on the SAHRA (South African Heritage Resource Agency) provincial databases.

This Heritage Impact Assessment relies on the analysis of written documents, maps, aerial photographs and other archival sources combined with the results of site investigations and interviews with effected people. Site investigations are not exhaustive and often focus on areas such as river confluence areas, elevated sites or occupational ruins.

The following documents were consulted in this study;

- South African National Archive Documents
- SAHRIS (South African Heritage Resources Information System) Database of Heritage Studies
- Internet Search
- Historic Maps
- 1943, 1966, 1999 & 2005 Surveyor General Topographic Map series
- 1952 1:10 000 aerial photo survey
- Google Earth 2016 imagery
- Published articles and books
- JSTOR Article Archive

FIELDWORK

Fieldwork for this study was performed on the 1st of December 2016. Most of the areas were found to be

accessible by vehicle. Areas of possible significance were investigated on foot. The survey was tracked using GPS and a track file in GPX format is available on request.

The study focused on systematic field surveys of the study area.

Areas with less development impact was investigated closer to determine whether any sites of heritage value could still occur sub-surface, however no indications of such sites were evident (such as graves, shell middens, disposed pot sherd etc.).

Where sites were identified it was documented photographically and plotted using GPS with the WGS 84 datum point as reference. GPX files are available on request from G&A Heritage.

The study area was surveyed using standard archaeological surveying methods. The area was surveyed using directional parameters supplied by the GPS and surveyed by foot. This technique has proven to result in the maximum coverage of an area. This action is defined as;

'an archaeologist being present in the course of the carrying-out of the development works (which may include conservation works), so as to identify and protect archaeological deposits, features or objects which may be uncovered or otherwise affected by the works' (DAHGI 1999a, 28).

Standard archaeological documentation formats were employed in the description of sites. Using standard site documentation forms as comparable medium, it enabled the surveyors to evaluate the relative importance of sites found. Furthermore, GPS (Global Positioning System) readings of all finds and sites were taken. This information was then plotted using a **Garmin Colorado** GPS (WGS 84-datum).

Indicators such as surface finds, plant growth anomalies, local information and topography were used in identifying sites of possible archaeological importance. Test probes were done at intervals to determine sub-surface occurrence of archaeological material. The importance of sites was assessed by comparisons with published information as well as comparative collections.

Test excavation is that form of archaeological excavation where the purpose is to establish the nature and extent of archaeological deposits and features present in a location, which it is proposed to develop (though not normally to fully investigate those deposits or features) and allow an assessment to be made of the archaeological impact of the proposed development. It may also be referred to as archaeological testing' (DAHGI 1999a, 27).

'Test excavation should not be confused with, or referred to as, archaeological assessment which is the overall process of assessing the archaeological impact of development. Test excavation is one of the techniques in carrying out archaeological assessment which may also include, as appropriate, documentary research, field walking, examination of upstanding or visible features or structures, examination of aerial photographs, satellite or other remote sensing imagery, geophysical survey, and topographical assessment' (DAHGI 1999b, 18).

MEASURING IMPACTS

In 2003 the SAHRA (South African Heritage Resources Agency) compiled the following guidelines to evaluate the cultural significance of individual heritage resources:

TYPE OF RESOURCE

- Place
- Archaeological Site
- Structure
- Grave
- Paleontological Feature
- Geological Feature

TYPE OF SIGNIFICANCE

HISTORIC VALUE

It is important in the community, or pattern of history

- Important in the evolution of cultural landscapes and settlement patterns
- Important in exhibiting density, richness or diversity of cultural features illustrating the human occupation and evolution of the nation, province, region or locality.
- Important for association with events, developments or cultural phases that have had a significant role in the human occupation and evolution of the nation, province, region or community.
- Important as an example for technical, creative, design or artistic excellence, innovation or achievement in a particular period.

It has strong or special association with the life or work of a person, group or organisation of importance in history

- Importance for close associations with individuals, groups or organisations whose life, works or activities have been significant within the history of the nation, province, region or community.

It has significance relating to the history of slavery

- Importance for a direct link to the history of slavery in South Africa.

AESTHETIC VALUE

It is important in exhibiting particular aesthetic characteristics valued by a community or cultural group.

- Important to a community for aesthetic characteristics held in high esteem or otherwise valued by the community.
- Importance for its creative, design or artistic excellence, innovation or achievement.
- Importance for its contribution to the aesthetic values of the setting demonstrated by a landmark quality or having impact on important vistas or otherwise contributing to the identified aesthetic qualities of the cultural environs or the natural landscape within which it is located.
- In the case of an historic precinct, importance for the aesthetic character created by the individual components which collectively form a significant streetscape, townscape or cultural environment.

SCIENTIFIC VALUE

It has potential to yield information that will contribute to an understanding of natural or cultural heritage

- Importance for information contributing to a wider understanding of natural or cultural history by virtue of its use as a research site, teaching site, type locality, reference or benchmark site.
- Importance for information contributing to a wider understanding of the origin of the universe or of the development of the earth.
- Importance for information contributing to a wider understanding of the origin of life; the development of plant or animal species, or the biological or cultural development of hominid or human species.
- Importance for its potential to yield information contributing to a wider understanding of the history of human occupation of the nation, Province, region or locality.
- It is important in demonstrating a high degree of creative or technical achievement at a particular period
- Importance for its technical innovation or achievement.

(a) Does the site contain evidence, which may substantively enhance understanding of culture history, culture process, and other aspects of local and regional prehistory?

- internal stratification and depth
- chronologically sensitive cultural items
- materials for absolute dating
- association with ancient landforms
- quantity and variety of tool type
- distinct intra-site activity areas
- tool types indicative of specific socio-economic or religious activity
- cultural features such as burials, dwellings, hearths, etc.
- diagnostic faunal and floral remains
- exotic cultural items and materials
- uniqueness or representativeness of the site
- integrity of the site

(b) Does the site contain evidence which may be used for experimentation aimed at improving archaeological methods and techniques?

- monitoring impacts from artificial or natural agents
- site preservation or conservation experiments
- data recovery experiments
- sampling experiments
- intra-site spatial analysis

(c) Does the site contain evidence which can make important contributions to paleoenvironmental studies?

- topographical, geomorphological context
- depositional character
- diagnostic faunal, floral data

(d) Does the site contain evidence which can contribute to other scientific disciplines such as hydrology, geomorphology, pedology, meteorology, zoology, botany, forensic medicine, and environmental hazards research, or to industry including forestry and commercial fisheries?

SOCIAL VALUE / PUBLIC SIGNIFICANCE

- It has strong or special association with a particular community or cultural group for social, cultural or spiritual reasons
- Importance as a place highly valued by a community or cultural group for reasons of social, cultural, religious, spiritual, symbolic, aesthetic or educational associations.
- Importance in contributing to a community's sense of place.

(a) Does the site have potential for public use in an interpretive, educational or recreational capacity?

- integrity of the site
- technical and economic feasibility of restoration and development for public use
- visibility of cultural features and their ability to be easily interpreted
- accessibility to the public

- opportunities for protection against vandalism
- representativeness and uniqueness of the site
- aesthetics of the local setting
- proximity to established recreation areas
- present and potential land use
- land ownership and administration
- legal and jurisdictional status

- local community attitude toward development

(b) Does the site receive visitation or use by tourists, local residents or school groups?

ETHNIC SIGNIFICANCE

(a) Does the site presently have traditional, social or religious importance to a particular group or community?

- ethnographic or ethno-historic reference
- documented local community recognition or, and concern for, the site

ECONOMIC SIGNIFICANCE

(a) What value of user-benefits may be placed on the site?

- visitors' willingness-to-pay
- visitors' travel costs

SCIENTIFIC SIGNIFICANCE

(a) Does the site contain evidence, which may substantively enhance understanding of historic patterns of settlement and land use in a particular locality, regional or larger area?

(b) Does the site contain evidence, which can make important contributions to other scientific disciplines or industry?

HISTORIC SIGNIFICANCE

(a) Is the site associated with the early exploration, settlement, land use, or other aspect of southern Africa's cultural development?

(b) Is the site associated with the life or activities of a particular historic figure, group, organization, or institution that has made a significant contribution to, or impact on, the community, province or nation?

(c) Is the site associated with a particular historic event whether cultural, economic, military, religious, social or political that has made a significant contribution to, or impact on, the community, province or nation?

(d) Is the site associated with a traditional recurring event in the history of the community, province, or nation, such as an annual celebration?

PUBLIC SIGNIFICANCE

(a) Does the site have potential for public use in an interpretive, educational or recreational capacity?

- visibility and accessibility to the public
- ability of the site to be easily interpreted
- opportunities for protection against vandalism
- economic and engineering feasibility of reconstruction, restoration and maintenance
- representativeness and uniqueness of the site
- proximity to established recreation areas
- compatibility with surrounding zoning regulations or land use
- land ownership and administration
- local community attitude toward site preservation, development or destruction
- present use of site

(b) Does the site receive visitation or use by tourists, local residents or school groups?

OTHER

- (a) Is the site a commonly acknowledged landmark?
- (b) Does, or could, the site contribute to a sense of continuity or identity either alone or in conjunction with similar sites in the vicinity?
- (c) Is the site a good typical example of an early structure or device commonly used for a specific purpose throughout an area or period of time?
- (d) Is the site representative of a particular architectural style or pattern?

DEGREES OF SIGNIFICANCE

SIGNIFICANCE CRITERIA

There are several kinds of significance, including scientific, public, ethnic, historic and economic, that need to be taken into account when evaluating heritage resources. For any site, explicit criteria are used to measure these values. Innovative approaches to site evaluation which emphasize quantitative analysis and objectivity are encouraged. The process used to derive a measure of relative site significance must be rigorously documented, particularly the system for ranking or weighting various evaluated criteria.

Site integrity, or the degree to which a heritage site has been impaired or disturbed as a result of past land alteration, is an important consideration in evaluating site significance. In this regard, it is important to recognize that although an archaeological site has been disturbed, it may still contain important scientific information.

Heritage resources may be of scientific value in two respects. The potential to yield information, which, if properly recovered, will enhance understanding of Southern African human history, is one appropriate measure of scientific significance. In this respect, archaeological sites should be evaluated in terms of their potential to resolve current archaeological research problems. Scientific significance also refers to the potential for relevant contributions to other academic disciplines or to industry.

Public significance refers to the potential a site has for enhancing the public's understanding and appreciation of the past. The interpretive, educational and recreational potential of a site are valid indications of public value. Public significance criteria such as ease of access, land ownership, or scenic setting are often external to the site itself. The relevance of heritage resource data to private industry may also be interpreted as a particular kind of public significance.

Ethnic significance applies to heritage sites which have value to an ethnically distinct community or group of people. Determining the ethnic significance of an archaeological site may require consultation with persons having special knowledge of a particular site. It is essential that ethnic significance be assessed by someone properly trained in obtaining and evaluating such data.

Historic archaeological sites may relate to individuals or events that made an important, lasting contribution to the development of a particular locality or the province. Historically important sites also reflect or commemorate the historic socioeconomic character of an area. Sites having high historical value will also usually have high public value.

The economic or monetary value of a heritage site, where calculable, is also an important indication of significance. In some cases, it may be possible to project monetary benefits derived from the public's use of a heritage site as an educational or recreational facility. This may be accomplished by employing established economic evaluation methods; most of which have been developed for valuating outdoor recreation. The objective is to determine the willingness of users, including local residents and tourists, to pay for the experiences or services the site provides even though no payment is presently being made. Calculation of user benefits will normally require some study of the visitor population (*Smith, L.D. 1977*).

RARITY

- It possesses uncommon, rare or endangered aspects of natural or cultural heritage.
- Importance for rare, endangered or uncommon structures, landscapes or phenomena.

REPRESENTIVITY

- It is important in demonstrating the principal characteristics of a particular class of natural or cultural places or objects.
- Importance in demonstrating the principal characteristics of a range of landscapes or environments, the attributes of which identify it as being characteristic of its class.
- Importance in demonstrating the principal characteristics of human activities (including way of life, philosophy, custom, process, land-use, function, design or technique) in the environment of the nation, province, region or locality.

The table below illustrates how a site's heritage significance is determined

Spheres of Significance	High	Medium	Low
International			
National			
Provincial			
Regional			
Local			
Specific Community			

ASSESSMENT OF HERITAGE POTENTIAL

ASSESSMENT MATRIX

DETERMINING ARCHAEOLOGICAL SIGNIFICANCE

In addition to guidelines provided by the National Heritage Resources Act (Act No. 25 of 1999), a set of criteria based on Deacon (J) and Whitelaw (1997) for assessing archaeological significance has been developed for Eastern Cape settings (Morris 2007a). These criteria include estimation of landform potential (in terms of its capacity to contain archaeological traces) and assessing the value to any archaeological traces (in terms of their attributes or their capacity to be construed as evidence, given that evidence is not given but constructed by the investigator).

Estimating site potential

Table 1 (below) is a classification of landforms and visible archaeological traces used for estimating the potential of archaeological sites (after J. Deacon and, National Monuments Council). Type 3 sites tend to be those with higher archaeological potential, but there are notable exceptions to this rule, for example the renowned rock engravings site Driekopseiland near Kimberley which is on landform L1 Type 1 – normally a setting of lowest expected potential. It should also be noted that, generally, the older a site the poorer the preservation, so that sometimes any trace, even of only Type 1 quality, could be of exceptional significance. In light of this, estimation of potential will always be a matter for archaeological observation and interpretation.

Table 1: Classification of landforms and visible archaeological traces for estimating the potential for archaeological sites (after J. Deacon, NMC as used in Morris)

Class	Landform	Type 1	Type 2	Type 3
L1	Rocky Surface	Bedrock exposed	Some soil patches	Sandy/grassy patches
L2	Ploughed land	Far from water	In floodplain	On old river terrace
L3	Sandy ground, inland	Far from water	In floodplain or near features such as hill/dune	On old river terrace
L4	Sandy ground, coastal	>1 km from sea	Inland of dune cordon	Near rocky shore
L5	Water-logged deposit	Heavily vegetated	Running water	Sedimentary basin
L6	Developed urban	Heavily built-up with no known record of early settlement	Known early settlements, but buildings have	Buildings without extensive basements over known historical

			basements	sites
L7	Lime/dolomite	>5 myrs	<5000 yrs	Between 5000 yrs and 5 myrs
L8	Rock shelter	Rocky floor	Loping floor or small area	Flat floor, high ceiling
Class	Archaeological traces	Type 1	Type 2	Type 3
A1	Area previously excavated	Little deposit remaining	More than half deposit remaining	High profile site
A2	Shell of bones visible	Dispersed scatter	Deposit <0.5 m thick	Deposit >0.5 m thick; shell and bone dense
A3	Stone artefacts or stone walling or other feature visible	Dispersed scatter	Deposit <0.5m thick	Deposit >0.5 m thick

Table 2: Site attributes and value assessment (adopted from Whitelaw 1997 as used in Morris)

Class	Landforms	Type 1	Type 2	Type 3
1	Length of sequence /context	No sequence Poor context Dispersed distribution	Limited sequence	Long sequence Favourable context High density of arte / ecofacts
2	Presence of exceptional items (incl. regional rarity)	Absent	Present	Major element
3	Organic preservation	Absent	Present	Major element
4	Potential for future archaeological investigation	Low	Medium	High
5	Potential for public display	Low	Medium	High
6	Aesthetic appeal	Low	Medium	High
7	Potential for implementation of a long-term management plan	Low	Medium	High

ASSESSING SITE VALUE BY ATTRIBUTE

Table 2 is adapted from Whitelaw (1997), who developed an approach for selecting sites meriting heritage recognition status in KwaZulu-Natal. It is a means of judging a site's archaeological value by ranking the relative strengths of a range of attributes (given in the second column of the table). While aspects of this matrix remain qualitative, attribute assessment is a good indicator of the general archaeological significance of a site, with Type 3 attributes being those of highest significance.

IMPACT STATEMENT

ASSESSMENT OF IMPACTS

A heritage resource impact may be broadly defined as the net change between the integrity of a heritage site with and without the proposed development. This change may be either beneficial or adverse.

Beneficial impacts occur wherever a proposed development actively protects, preserves or enhances a heritage resource. For example, development may have a beneficial effect by preventing or lessening natural site erosion. Similarly, an action may serve to preserve a site for future investigation by covering it with a protective layer of fill. In other cases, the public or economic significance of an archaeological site may be enhanced by actions, which facilitate non-destructive public use. Although beneficial impacts are unlikely to occur frequently, they should be included in the assessment.

More commonly, the effects of a project on heritage sites are of an adverse nature. Adverse impacts occur under conditions that include:

- (a) destruction or alteration of all or part of a heritage site;

- (b) isolation of a site from its natural setting; and
- (c) introduction of physical, chemical or visual elements that are out-of-character with the heritage resource and its setting.

Adverse effects can be more specifically defined as direct or indirect impacts. Direct impacts are the immediately demonstrable effects of a project which can be attributed to particular land modifying actions. They are directly caused by a project or its ancillary facilities and occur at the same time and place. The immediate consequences of a project action, such as slope failure following reservoir inundation, are also considered direct impacts.

Indirect impacts result from activities other than actual project actions. Nevertheless, they are clearly induced by a project and would not occur without it. For example, project development may induce changes in land use or population density, such as increased urban and recreational development, which may indirectly impact upon heritage sites. Increased vandalism of heritage sites, resulting from improved or newly introduced access, is also considered an indirect impact. Indirect impacts are much more difficult to assess and quantify than impacts of a direct nature.

Once all project related impacts are identified, it is necessary to determine their individual level-of-effect on heritage resources. This assessment is aimed at determining the extent or degree to which future opportunities for scientific research, preservation, or public appreciation are foreclosed or otherwise adversely affected by a proposed action. Therefore, the assessment provides a reasonable indication of the relative significance or importance of a particular impact. Normally, the assessment should follow site evaluation since it is important to know what heritage values may be adversely affected.

The assessment should include careful consideration of the following level-of-effect indicators, which are defined below:

- magnitude
- severity
- duration
- range
- frequency
- diversity
- cumulative effect
- rate of change

INDICATORS OF IMPACT SEVERITY

Magnitude

The amount of physical alteration or destruction, which can be expected. The resultant loss of heritage value is measured either in amount or degree of disturbance.

Severity

The irreversibility of an impact. Adverse impacts, which result in a totally irreversible and irretrievable loss of heritage value, are of the highest severity.

Duration

The length of time an adverse impact persists. Impacts may have short-term or temporary effects, or conversely, more persistent, long-term effects on heritage sites.

Range

The spatial distribution, whether widespread or site-specific, of an adverse impact.

Frequency

The number of times an impact can be expected. For example, an adverse impact of variable magnitude and severity may occur only once. An impact such as that resulting from cultivation may be of recurring or on-going nature.

Diversity

The number of different kinds of project-related actions expected to affect a heritage site.

Cumulative Effect

A progressive alteration or destruction of a site owing to the repetitive nature of one or more impacts.

Rate of Change

The rate at which an impact will effectively alter the integrity or physical condition of a heritage site. Although an important level-of-effect indicator, it is often difficult to estimate. Rate of change is normally assessed during or following project construction.

The level-of-effect assessment should be conducted and reported in a quantitative and objective fashion. The methodological approach, particularly the system of ranking level-of-effect indicators, must be rigorously documented and recommendations should be made with respect to managing uncertainties in the assessment. (*Zubrow, Ezra B.A., 1984*).

PALEONTOLOGICAL SITES

Paleontology will be evaluated in a separate specialist report appended to this report.

POST-CONTACT SITES

No sites associated with the post-contact era will be affected by the proposed development.

BUILT ENVIRONMENT

Several structures associated with the old bus terminal was identified on site. None of these held any heritage significance.

HISTORIC SIGNIFICANCE

Built Environment around the Proposed Mtubatuba Cemetery

No	Criteria	Significance Rating
1	Are any of the identified sites or buildings associated with a historical person or group? No	N/A
2	Are any of the buildings or identified sites associated with a historical event? No	N/A
3	Are any of the identified sites or buildings associated with a religious, economic social or political or educational activity? No	N/A
4	Are any of the identified sites or buildings of archaeological significance? No	N/A
5	Are any of the identified buildings or structures older than 60 years? No	N/A

ARCHITECTURAL SIGNIFICANCE

No	Criteria	Rating
1	Are any of the buildings or structures an important example of a building type? No	N/A
2	Are any of the buildings outstanding examples of a particular style or period? No	N/A
3	Do any of the buildings contain fine architectural details and reflect exceptional craftsmanship? No	N/A
4	Are any of the buildings an example of an industrial, engineering or technological development? No	N/A

5	What is the state of the architectural and structural integrity of the building? No	N/A
6	Is the building's current and future use in sympathy with its original use (for which the building was designed)? N/A	-
7	Were the alterations done in sympathy with the original design? N/A	-
8	Were the additions and extensions done in sympathy with the original design? N/A	-
9	Are any of the buildings or structures the work of a major architect, engineer or builder? No.	N/A

SPATIAL SIGNIFICANCE

Even though each building needs to be evaluated as a single artefact the site still needs to be evaluated in terms of its significance in its geographic area, city, town, village, neighbourhood or precinct. This set of criteria determines the spatial significance.

No	Criteria	Rating
1	Can any of the identified buildings or structures be considered a landmark in the town or city? No	-
2	Do any of the buildings contribute to the character of the neighborhood? No	-
3	Do any of the buildings contribute to the character of the square or streetscape? No	-
4	Do any of the buildings form part of an important group of buildings? No	-

IMPACT EVALUATION

This HIA Methodology assists in evaluating the overall effect of a proposed activity on the heritage environment. The determination of the effect of a heritage impact on a heritage parameter is determined through a systematic analysis of the various components of the impact. This is undertaken using information that is available to the heritage practitioner through the process of heritage impact assessment. The impact evaluation of predicted impacts was undertaken through an assessment of the significance of the impacts.

DETERMINATION OF SIGNIFICANCE OF IMPACTS

Significance is determined through a synthesis of impact characteristics, which include context and intensity of an impact. Context refers to the geographical scale i.e. site, local, national or global whereas intensity is defined by the severity of the impact e.g. the magnitude of deviation from background conditions, the size of the area affected, the duration of the impact and the overall probability of occurrence.

Significance is an indication of the importance of the impact in terms of both physical extent and time scale, and therefore indicates the level of mitigation required. The total number of points scored for each impact indicates the level of significance of the impact.

IMPACT RATING SYSTEM

Impact assessment must take account of the nature, scale and duration of effects on the heritage environment whether such effects are positive (beneficial) or negative (detrimental). Each issue / impact

is also assessed according to the project stages:

- planning
- construction
- operation
- decommissioning

Where necessary, the proposal for mitigation or optimisation of an impact will be detailed. A brief discussion of the impact and the rationale behind the assessment of its significance has also been included.

RATING SYSTEM USED TO CLASSIFY IMPACTS

The rating system is applied to the potential impact on the receiving environment and includes an objective evaluation of the mitigation of the impact. Impacts have been consolidated into one rating. In assessing the significance of each issue the following criteria (including an allocated point system) is used:

NATURE		
Including a brief description of the impact of the heritage parameter being assessed in the context of the project. This criterion includes a brief written statement of the heritage aspect being impacted upon by a particular action or activity.		
GEOGRAPHICAL EXTENT		
This is defined as the area over which the impact will be expressed. Typically, the severity and significance of an impact have different scales and as such bracketing ranges are often required. This is often useful during the detailed assessment of a project in terms of further defining the determined.		
1	Site	The impact will only affect the site.
2	Local/district	Will affect the local area or district.
3	Province/region	Will affect the entire province or region.
4	International and National	Will affect the entire country.
PROBABILITY		
This describes the chance of occurrence of an impact		
1	Unlikely	The chance of the impact occurring is extremely low (Less than a 25% chance of occurrence).
2	Possible	The impact may occur (Between a 25% to 50% chance of occurrence).
3	Probable	The impact will likely occur (Between a 50% to 75% chance of occurrence).
4	Definite	Impact will certainly occur (Greater than a 75% chance of occurrence).
REVERSIBILITY		
This describes the degree to which an impact on a heritage parameter can be successfully reversed upon completion of the proposed activity.		
1	Completely reversible	The impact is reversible with implementation of minor mitigation measures.
2	Partly reversible	The impact is partly reversible but more intense mitigation

		measures are required.
3	Barely reversible	The impact is unlikely to be reversed even with intense mitigation measures.
4	Irreversible	The impact is irreversible and no mitigation measures exist.
IRREPLACEABLE LOSS OF RESOURCES		
This describes the degree to which heritage resources will be irreplaceably lost as a result of a proposed activity.		
1	No loss of resource.	The impact will not result in the loss of any resources.
2	Marginal loss of resource	The impact will result in marginal loss of resources.
3	Significant loss of resources	The impact will result in significant loss of resources.
4	Complete loss of resources	The impact is result in a complete loss of all resources.
DURATION		
This describes the duration of the impacts on the heritage parameter. Duration indicates the lifetime of the impact as a result of the proposed activity.		
1	Short term	The impact and its effects will either disappear with mitigation or will be mitigated through natural process in a span shorter than the construction phase (0 – 1 years), or the impact and its effects will last for the period of a relatively short construction period and a limited recovery time after construction, thereafter it will be entirely negated (0 – 2 years).
2	Medium term	The impact and its effects will continue or last for some time after the construction phase but will be mitigated by direct human action or by natural processes thereafter (2 – 10 years).
3	Long term	The impact and its effects will continue or last for the entire operational life of the development, but will be mitigated by direct human action or by natural processes thereafter (10 – 50 years).
4	Permanent	The only class of impact that will be non-transitory. Mitigation either by man or natural process will not occur in such a way or such a time span that the impact can be considered transient (Indefinite).
CUMULATIVE EFFECT		
This describes the cumulative effect of the impacts on the heritage parameter. A cumulative effect/impact is an effect, which in itself may not be significant but may become significant if added to other existing or potential impacts emanating from other similar or diverse activities as a result of the project activity in question.		
1	Negligible Cumulative Impact	The impact would result in negligible to no cumulative effects.
2	Low Cumulative Impact	The impact would result in insignificant cumulative effects.
3	Medium Cumulative impact	The impact would result in minor cumulative effects.

4	High Cumulative Impact	The impact would result in significant cumulative effects.
INTENSITY / MAGNITUDE		
Describes the severity of an impact.		
1	Low	Impact affects the quality, use and integrity of the system/component in a way that is barely perceptible.
2	Medium	Impact alters the quality, use and integrity of the system/component but system/ component still continues to function in a moderately modified way and maintains general integrity (some impact on integrity).
3	High	Impact affects the continued viability of the system/component and the quality, use, integrity and functionality of the system or component is severely impaired and may temporarily cease. High costs of rehabilitation and remediation.
4	Very high	Impact affects the continued viability of the system/component and the quality, use, integrity and functionality of the system or component permanently ceases and is irreversibly impaired (system collapse). Rehabilitation and remediation often impossible. If possible rehabilitation and remediation often unfeasible due to extremely high costs of rehabilitation and remediation.
SIGNIFICANCE		
<p>Significance is determined through a synthesis of impact characteristics. Significance is an indication of the importance of the impact in terms of both physical extent and time scale, and therefore indicates the level of mitigation required. This describes the significance of the impact on the heritage parameter. The calculation of the significance of an impact uses the following formula:</p> <p>(Extent + probability + reversibility + irreplaceability + duration + cumulative effect) x magnitude/intensity.</p> <p>The summation of the different criteria will produce a non weighted value. By multiplying this value with the magnitude/intensity, the resultant value acquires a weighted characteristic which can be measured and assigned a significance rating.</p>		
Points	Impact Significance Rating	Description
6 to 28	Negative Low impact	The anticipated impact will have negligible negative effects and will require little to no mitigation.
6 to 28	Positive Low impact	The anticipated impact will have minor positive effects.
29 to 50	Negative Medium impact	The anticipated impact will have moderate negative effects and will require moderate mitigation measures.
29 to 50	Positive Medium impact	The anticipated impact will have moderate positive effects.
51 to 73	Negative High impact	The anticipated impact will have significant effects and will require significant mitigation measures to achieve an acceptable level of impact.

51 to 73	Positive High impact	The anticipated impact will have significant positive effects.
74 to 96	Negative Very high impact	The anticipated impact will have highly significant effects and are unlikely to be able to be mitigated adequately. These impacts could be considered "fatal flaws".
74 to 96	Positive Very high impact	The anticipated impact will have highly significant positive effects.

ANTICIPATED IMPACT OF THE DEVELOPMENT

MTUBATUBA CEMETERY

IMPACT TABLE FORMAT		
Heritage component	<i>Heritage sites of significance</i>	
Issue/Impact/Heritage Impact/Nature	<i>Proposed development of the Mtubatuba Cemetery</i>	
<i>Extent</i>	<i>Local</i>	
<i>Probability</i>	<i>Unlikely</i>	
<i>Reversibility</i>	<i>Totally Reversible</i>	
<i>Irreplaceable loss of resources</i>	<i>Insignificant loss of resources</i>	
<i>Duration</i>	<i>Medium term</i>	
<i>Cumulative effect</i>	<i>Low cumulative effect</i>	
<i>Intensity/magnitude</i>	<i>Low</i>	
<i>Significance Rating of Potential Impact</i>	<i>8 points. The impact will have a low negative impact rating.</i>	
	Pre-mitigation impact rating	Post mitigation impact rating
Extent	2	2
Probability	1	1
Reversibility	2	2
Irreplaceable loss	1	1
Duration	2	2
Cumulative effect	1	1
Intensity/magnitude	1	1
Significance rating	8 (low negative)	8 (low negative)
Mitigation measure	<i>Should any graves be identified during the construction phase of the project the attached recommendations should be followed in the mitigation of them.</i>	

ASSESSING VISUAL IMPACT

Visual impacts of developments result when sites that are culturally celebrated are visually affected by a development. The exact parameters for the determination of visual impacts have not yet been rigidly defined and are still mostly open to interpretation. CNdV Architects and The Department of Environmental Affairs and Development Planning (2006) have developed some guidelines for the management of the visual impacts of wind turbines in the Western Cape, although these have not yet been formalised. In these guidelines they recommend a buffer zone of 1km around significant heritage sites to minimise the visual impact.

Due to the fact that the project will mainly involve sub-surface infrastructure it is not anticipated that any visual impacts will be encountered. Pump stations will also be of low profile and will therefore have a minimum of impact.

ASSUMPTIONS AND RESTRICTIONS

- It is assumed that the South African Heritage Resources Information System (SAHRIS) database locations are correct
- It is assumed that the paleontological information collected for the project is comprehensive.
- It is assumed that the social impact assessment and public participation process of the Basic Assessment will result in the identification of any intangible sites of heritage potential.

ASSESSMENT OF IMPACTS

IMPACT STATEMENT

PALEONTOLOGICAL SITES

No impact is anticipated.

Mitigation

No mitigation needed.

BUILT ENVIRONMENT

No sites identified.

Mitigation

None of the structures will be affected by the construction activities.

CULTURAL LANDSCAPE

The following landscape types were identified during the study.

Landscape Type	Description	Occurrence still possible?	Identified on site?
1 Paleontological	Mostly fossil remains. Remains include microbial fossils such as found in Barberton Greenstones	Yes, sub-surface	No
2 Archaeological	Evidence of human occupation associated with the following phases – Early-, Middle-, Late Stone Age, Early-, Late Iron Age, Pre-Contact Sites, Post-Contact Sites	Yes, sub-surface	No
3 Historic Built Environment	<ul style="list-style-type: none"> - Historical townscapes/streetscapes - Historical structures; i.e. older than 60 years - Formal public spaces - Formally declared urban conservation areas - Places associated with social identity/displacement 	No	No
4 Historic Farmland	These possess distinctive patterns of settlement and historical features such as: <ul style="list-style-type: none"> - Historical farm yards - Historical farm workers villages/settlements - Irrigation furrows - Tree alignments and groupings - Historical routes and pathways - Distinctive types of planting - Distinctive architecture of cultivation e.g. planting blocks, trellising, terracing, ornamental planting. 	No	No
5 Historic rural	<ul style="list-style-type: none"> - Historic mission settlements 	No	No

town	- Historic townscapes		
6 Pristine natural landscape	<ul style="list-style-type: none"> - Historical patterns of access to a natural amenity - Formally proclaimed nature reserves - Evidence of pre-colonial occupation - Scenic resources, e.g. view corridors, viewing sites, visual edges, visual linkages - Historical structures/settlements older than 60 years - Pre-colonial or historical burial sites - Geological sites of cultural significance. 	No	No
7 Relic Landscape	<ul style="list-style-type: none"> - Past farming settlements - Past industrial sites - Places of isolation related to attitudes to medical treatment - Battle sites - Sites of displacement, 	No	No
8 Burial grounds and grave sites	<ul style="list-style-type: none"> - Pre-colonial burials (marked or unmarked, known or unknown) - Historical graves (marked or unmarked, known or unknown) - Graves of victims of conflict - Human remains (older than 100 years) - Associated burial goods (older than 100 years) - Burial architecture (older than 60 years) 	Yes	No
9 Associated Landscapes	<ul style="list-style-type: none"> - Sites associated with living heritage e.g. initiation sites, harvesting of natural resources for traditional medicinal purposes - Sites associated with displacement & contestation - Sites of political conflict/struggle - Sites associated with an historic event/person - Sites associated with public memory 	No	No
10 Historical Farmyard	<ul style="list-style-type: none"> - Setting of the yard and its context - Composition of structures - Historical/architectural value of individual structures - Tree alignments - Views to and from - Axial relationships - System of enclosure, e.g. defining walls - Systems of water reticulation and irrigation, e.g. furrows - Sites associated with slavery and farm labour - Colonial period archaeology 	No	No
11 Historic institutions	<ul style="list-style-type: none"> - Historical prisons - Hospital sites - Historical school/reformatory sites - Military bases 	No	No
12 Scenic visual	- Scenic routes	No	No
13 Amenity landscape	<ul style="list-style-type: none"> - View sheds - View points - Views to and from - Gateway conditions - Distinctive representative landscape conditions - Scenic corridors 	No	No

Mitigation

It is recommended that the development designs take into account the positive and negative characteristics of the existing cultural landscape type and that they endeavor to promote the positive aspects while at the same time mitigating the negative aspects.

RESOURCE MANAGEMENT RECOMMENDATIONS

Although unlikely, sub-surface remains of heritage sites could still be encountered during the construction activities associated with the project. Such sites would offer no surface indication of their presence due to the high state of alterations in some areas as well as heavy plant cover in other areas. The following indicators of unmarked sub-surface sites could be encountered:

- Ash deposits (unnaturally grey appearance of soil compared to the surrounding substrate);
- Bone concentrations, either animal or human;
- Ceramic fragments such as pottery shards either historic or pre-contact;
- Stone concentrations of any formal nature.

The following recommendations are given should any sub-surface remains of heritage sites be identified as indicated above:

- All operators of excavation equipment should be made aware of the possibility of the occurrence of sub-surface heritage features and the following procedures should they be encountered.
- All construction in the immediate vicinity (50m radius of the site) should cease.
- The heritage practitioner should be informed as soon as possible.
- In the event of obvious human remains the South African Police Services (SAPS) should be notified.
- Mitigation measures (such as refilling etc.) should not be attempted.
- The area in a 50m radius of the find should be cordoned off with hazard tape.
- Public access should be limited.
- The area should be placed under guard.
- No media statements should be released until such time as the heritage practitioner has had sufficient time to analyze the finds.

CONCLUSION

The site for the proposed development of the Mtubatuba Cemetery was investigated through archival study as well as on foot. No signs of heritage significance sites were documented.

Provided the recommendations in this report is followed there is no reason, from a heritage point of view, why this development cannot continue.

REFERENCES CITED

- Ahler, S.A. 1977. Functional analysis of nonobsidian chipped stone artefacts: terms, variables and quantification. In: Hayden, B. (ed.). *Lithic use-wear analysis*: 301-328. New York: Academic Press.
- Aikman, H, Baumann, N, Winter, S and Clift H. 2005. A state of the cultural historical environment study: Unpublished report compiled by Overstrand Heritage and Landscape Consortium for the Overstrand District Municipality.
- Booth, A. R. ed. 1967. *Journal of the Rev. George Champion*. Cape Town: Struik.
- Brain, C.K. 1981. *The hunters or the hunted? An introduction to African cave taphonomy*. Chicago: Chicago University Press.
- Cory, Sir G. E. 1926. *The Diary of the Rev. Francis*
- Cronin, M. 1975. *Mgungundlovu*. Unpublished B.A. (Hons.) thesis: University of Cape Town.
- Cruz-Uribe, K. & Klein, R.G. 1994. Chew marks and cut marks on animal bones from the Kasteelberg B and Dune Field Midden Later Stone Age sites, Western Cape Province, South Africa. *Journal of Archaeological Science* 21: 35-49.
- Dennis Moss Partnerships Inc. 2003. *Overberg Spatial Development Framework*. Department of Planning, Local Government and Housing. 2000. *Bio-regional Planning Framework for the Western Cape Province*.
- Gardiner, Allen F. 1966. *Narrative of a Journey to the Zoolu Country in South Africa*. Cape Town: Struik (Reprint).
- Greenfield, H. J., van Schalkwyk, L. O. and Jongsma, T. L. 2000. Surface and subsurface reconnaissance at Ndongondwane: preliminary results of the 1995-97 field seasons. *Southern African Field Archaeology*, 9: 5-16.
- Greenfield, H. J. and van Schalkwyk, L. O. 2003. Intra-settlement social and economic organization of Early Iron Age farming communities in southern Africa: view from Ndongondwane. *Azania*, 38: 121-37.
- Hart, T. & Miller, D. 1994. Phase 1 archaeological and palaeontological survey of the proposed mining area on the farm Velddrif 110, Velddrif, Western Cape Province. Report prepared by the Archaeology Contracts Office, University of Cape Town, for Lime Sales Limited.
- Huffman, T. N. 1993. Broederstroom and the Central Cattle Pattern. *South African Journal of Science*, 89: 220-26.
- Huffman, T. N. 2001. The Central Cattle Pattern and interpreting the past. *Southern African Humanities*, 13: 19-35.
- Kirby, P. R. 1955. *Andrew Smith and Natal*. Cape Town: Van Riebeeck Society.

Krige, E. J. 1936. The social system of the Zulus. Pietermaritzburg: Shuter and Shooter.

Kent, S. 1998. Invisible gender-invisible foragers: hunter-gatherer spatial patterning and the southern African archaeological record. In: Kent, S. (ed.) Gender in African prehistory: 39-67. California: Altamira Press.

Lombard, M. 2003. Closer to the point: macro-fracture, micro-wear and residue analyses of Middle Stone Age lithic points from Sibudu Cave, KwaZulu-Natal, South Africa. Unpublished M.Sc. thesis, University of the Witwatersrand.

Lombard, M., Parsons, I. & Van der Ryst, M.M. 2004. Middle Stone Age lithic point experimentation for macro-fracture and residue analysis: the process and preliminary results with reference to Sibudu Cave points. South African Journal of Science 100: 159-166

Japha, D., Japha, V., Le grange, L & Todeschini, F. Mission Settlements in South Africa: A Report on their historical background and prospects for conservation. University of Cape Town.

Maggs, T. O. 1980. The Iron Age sequence south of the Vaal and Pongola Rivers: some historical implications. Journal of African History, 21: 1-15.

Maggs, T. O. 1984a. Ndongondwane; a preliminary report on an Early Iron Age site on the lower Tugela River. Annals of the Natal Museum, 26: 71-94.

Maggs, T. O. 1984b. Iron Age settlement and subsistence patterns in the Tugela River Basin, Natal. In Frontiers of Southern African Archaeology Today (eds M. Hall, G. Avery, D. M. Avery, M. L. Wilson and A. J. B. Humphreys). Cambridge Monographs in African Archaeology 10. Oxford: British Archaeological Reports, International Series 207, pp. 194-206.

Maggs, T. O. 1984c. The Iron Age south of the Zambezi. In Southern African Prehistory and Paleoenvironments (ed. R. Klein). Rotterdam: Balken, pp. 329-60.

Maggs, T. O. 1989. The Iron Age farming communities. In Natal and Zululand: From Earliest Time to 1910: A New History (eds A. Duminy and B. Guest). Pietermaritzberg: University of Natal Press/Shuter & Shooter, pp. 28[^]8.

Maggs, T. O. 1995. The Early Iron Age in the extreme south: some patterns and problems. Azania, 29/30: 171-8.

Maggs, T. and Ward, V. 1984. Early Iron Age sites in the Muden area of Natal. Annals of the Natal Museum, 26: 105-40.

Maggs, T., Oswald, D., Hall, M. and Ruther, H. 1986. Spatial parameters of Late Iron Age settlements in the upper Thukela Valley. Annals of the Natal Museum, 27: 455-79.

Owen, M.A. Cape Town: Van Riebeeck Society.

Spenneman, D. 2006. Gauging community values in Historic preservation. CRM: The Journal of Heritage Stewardship 3(2):6-20.

Oberholster, J. J. & Walton, J. n.d. Dingane's Kraal - Mgunundlovu. National Monuments Commission Booklet.

Retief, P. in litt. Letter dated November 18, 1837. In Campbell, K. n.d.: Mgunundlovu- Dingaarns Kraal: 41. Unpublished MS. Killie Campbell Africana Library, Durban.

Stuart, J. n.d. Unpublished papers. Killie Campbell African Library, Durban.

Stuart, J. & McMalcolm, D. eds. 1969. The diary of Henry Francis Fynn. Pietermaritzburg: Shuter and Shooter.

Wadley, L & Jacobs, Z. 2004. Sibudu Cave, KwaZulu-Natal: Background to the excavations of Middle Stone Age and Iron Age occupations. South African Journal of Science 100: 145-151.

Webb, C. de B., & Wright, J. 1977. The Stuart Archives, Vol. I. Pietermaritzburg: Natal University Press.

Whitelaw, G. D. 1994. KwaGandaganda: settlement patters in the Natal Early Iron Age. Natal Museum Journal of Humanities, 6: 1-64.

Wood, W. 1840. Statements respecting Dingaan, King of the Zoolahs, with some particulars relative to themassacres of Messrs. Retief and Biggars, and their parties. Cape Town: Collard & Co.