

Phase 1 Heritage Impact Assessment of the Tom Schutte
Bridge on National Route 5 near Senekal, FS Province.



Dr Lloyd Rossouw
PO Box 38806
Langenhovenpark
9330

Executive Summary

- a Phase 1 Heritage Impact Assessment was carried at the Tom Schutte Bridge on the National Route 5 (N5) near Senekal. Planned alterations involve re-alignment of the road at the Tom Schutte Bridge and widening of the bridge.
- The southern side of the bridge has been severely disturbed by previous road building activities.
- There are no indications of prehistoric structures or rock engravings, graves, graveyards or historical structures within the affected area.
- There is no evidence for the accumulation and preservation of intact fossil material within the Quaternary sediments (topsoils) covering the underlying sedimentary rocks in the affected area.
- There are no major palaeontological grounds to suspend the proposed development, but it is noted that the bedrock sediments (Adelaide Subgroup) underlying the affected area may well be of palaeontological interest should bedrock excavations be required.
- A small, partially uncapped, Later Stone Age open site, is located on an eroded alluvial outcrop approximately 50 m from the eastern bank of the spruit at the northern side of the bridge.
- It is unlikely that the archaeological site will not be disturbed or during the operational phase of the development.
- Recording of the site and collection of the artifacts is considered crucial before any development can take place.
- It is recommended that a Phase 2 rescue operation precede the planned development in order to properly record the site and collect the artifacts.

Introduction

At the request of Terraworks Environmental Consultants, a Phase 1 Heritage Impact Assessment was carried at the Tom Schutte Bridge on the National Route 5 (N5) near Senekal (**Fig. 1**). The section is earmarked for re-alignment by SANRAL. The survey is required as a prerequisite for new development in terms of Section 38 (1) of the National Heritage Resources Act 25 of 1999. A site visit and subsequent assessment took place in March 2013. The task involved identification of possible heritage sites or occurrences in the proposed zone, an assessment of their significance, possible impact by the proposed development and recommendations for mitigation where relevant.

Terms of reference for assessment

- Identify and map possible heritage resources at the proposed site;
- Determine and assess the potential impacts of the proposed development on potential heritage resources in the proposed areas of impact;
- Recommend mitigation measures to minimize impacts associated with the proposed development.

Description of the Affected Area

Details of area surveyed

1:50 000 scale topographic map 2827BC Senekal

1:250 000 scale geological map 2826 Winburg

Closest town: Senekal

Site coordinates: S28 22 19.5 E27 32 44.7

Planned alterations involve re-alignment of the road at the Tom Schutte Bridge and widening of the bridge (**Fig. 2**). The Tom Schutte Bridge crosses the Tom Schutte Spruit and is located about 8km south-west of Senekal on the N5 national road. The surrounding area is made up of flat to undulating terrain covered by open grassland (**Fig. 3**). The veld is undeveloped and used for grazing.

Geology

The geology of the region has been described by Nolte (1995). The survey area is primarily underlain by medium to coarse-grained sandstones of the Adelaide Subgroup (Beaufort Group, Karoo Supergroup) (**Fig. 4 & 5**). The sedimentary rocks

form the base on which younger, alluvial deposits of Quaternary age have been deposited, especially along the Tom Schutte Spruit (**Fig. 6**). The alluvial deposits are mostly made up of grey and yellow sandy clays varying between 0.1 m and 2.0 m in thickness (**Fig. 6**).

Background

The Karoo sedimentological strata underlying the site and surrounding area are generally accepted to be Late Permian in age, and are assigned to the *Dicynodon* and overlying *Lystrosaurus* Assemblage Zones (Kitching 1977; 1995) (**Fig. 8**). The sediments assigned to the *Dicynodon* AZ are associated with stream deposits consisting of floodplain mudstones and subordinate, lenticular channel sandstones. Therapsids and other vertebrate fossils from the *Dicynodon* AZ are usually found as dispersed and isolated specimens in mudrock horizons, associated with an abundance of calcareous nodules. *Dicynodon lacerticeps* have been found on the Senekal commonage. Plant fossils (*Dadoxylon*, *Glossopteris*) and trace fossils (arthropod trails, worm burrows) are also present. Fossil trees of the *Dadoxylon* genus are common in the Winburg and Harrismith districts. A high occurrence of fossil wood has been recorded on the farms Waterloop 698, Langlaagte 398, Helderwater 701, Onze Rust 700 and Blinkwater 702.

Vertebrate fossils of the *Lystrosaurus* Assemblage Zone are primarily found in the mudrock sequences between channel sandstones. Fossils are frequently preserved as articulated skeletons within well-defined blue-grey or red-brown calcareous nodules. Burrow casts have been described from several localities within the biozone (Groenewald, 1991). Fossils of *Lystrosaurus* have been recorded on the farms Kruis Vlei 279, Halfweg 356, Brandfort 320 and Magdala 97.

Partially consolidated Quaternary alluvium found along river valleys near Senekal, are characterized by extensive erosion in the form of dongas, and are known to occasionally contain late Pleistocene vertebrate remains (e.g. *Phacochoerus sp.*) and even localized death assemblages (e.g. alcelaphine remains at Heelbo). However, there is currently no record of Quaternary-age fossils from alluvial sediments in the vicinity of the footprint.

The South African central plateau is distinctive in that it supported Stone Age people over thousands of years, who were also prolific makers of stone tools until relatively recent times. This can be seen in the high density of Stone Age archaeological traces

visible on the landscape today. The range of archaeological sites encountered in the Free State is extensive, in terms of both typology and chronology. This include Early Stone Age bifaces, and retouched blades and trimmed points from the Middle Stone Age to the microlithic Wilton and Smithfield Complexes from the Holocene.

Surface scatters of Later Stone Age and Middle Stone Age artifacts are frequent archaeological components along erosional gullies (dongas) of rivers and streams in the region. The incidence of surface scatters usually decreases away from localized areas such as riverine sites and dolerite-shale contact zones. Away from riverine contexts, Stone Age artifacts generally occur as contextually derived individual finds in the open veld. Several Later Stone Age sites have been identified near Bethlehem including the Saulspoort, Poortjie and Trekpad rockshelters. In addition to these shelters, several rock art localities, containing depictions of human figures, have been recorded in the Witteberge southeast of Paul Roux. A variety of stone dagga pipes have been collected in the region, including engraved sandstone and mudstone pipes, as well as a number made of baked clay.

The archaeological footprint in the region is primarily dominated by Late Iron Age stone wall complexes. Stone enclosures found on and around dolerite koppies along the river valley between Winburg and Bethlehem, exhibit telltale signs of basic structural units including huts, large enclosures, pieces of walling and stone circles related to Late Iron Age settlements in the area. These sites were occupied from as early as the sixteenth and seventeenth centuries and represent a system that can be broadly attributed to groups ancestral to the Sotho-speaking people of today (Maggs 1976). Extensive Iron Age settlements have been recorded previously between Paul Roux and Winburg at Three Sisters, Palmietfontein, Monte Carlo, La Rochelle, Leeukop, Vaalbank, Petra, Erfstuk, Allemanskraaldam, Fraai Uitzicht and the Allemanskraal Dam at the Willem Pretorius Nature Reserve.

Methodology

A foot survey, covering approximately 10 ha, was conducted along both sides of the bridge (**Fig 8, areas 1 and 2; Appendix 1**). The survey also included the open veld adjacent to the N5 (**Fig. 9**), as well as the river sections where the bridge crosses the Tom Schutte Spruit (**Fig. 10**). A Garmin Etrex Vista GPS hand model (set to the WGS 84 map datum) and a digital camera, were used to record relevant data. Relevant archaeological and palaeontological information as well as existing

fieldwork data were assimilated for the report and integrated with information acquired during the on-site inspection.

Results of Survey

Area 1

Investigation of Area 1 indicates that the southern side of the bridge has been severely disturbed by previous road building activities (**Fig. 11 & 12**). There is no evidence for the accumulation and preservation of intact fossil material within the Quaternary sediments (topsoils) covering the underlying sedimentary rocks in Area 1. There are no indications of Stone Age artifacts, prehistoric structures or rock engravings within Area 1. There is also no evidence of graves, graveyards or historical structures within the confines Area 1.

Area 2

Investigation of exposed topsoils in Area 2 shows no evidence for the accumulation and preservation of intact fossil material within the Quaternary sediments covering the underlying sedimentary rocks. No rock art, graves or graveyards were recorded. Historical buildings or structures older than 60 years are absent along the footprint.

An apparently intact, but isolated stone tool knapping site, about 3 m in diameter, is situated on an eroded alluvial outcrop approximately 50 m from the eastern bank of the spruit (**Fig. 13**). The site appears to be a partially uncapped, Later Stone Age open site (location S28 22 14.5 E27 32 48.5). The assemblage is represented microlithic stone tools made from a variety of cryptocrystalline quartz and fossil wood (*Dadoxylon*) (**Fig 14 & 15**). The character and typology of the material tentatively suggest association with the Wilton Complex, which is a distinctive mid- and late Holocene microlithic assemblage type.

Statement of Significance and Recommendations

There is no evidence for the accumulation and preservation of intact fossil material within the Quaternary sediments (topsoils) covering the underlying sedimentary rocks in Area 1 and 2. Rock engravings and historical buildings or structures older than 60 years are absent from Area 1 and 2. No graves or graveyards were recorded.

There are no major palaeontological grounds to suspend the proposed development, but it is noted that the bedrock sediments (Adelaide Subgroup) underlying the affected area may well be of palaeontological interest should bedrock excavations be required.

In this case it is advised that newly uncovered fossil material found during the course of excavations into intact sedimentary bedrock along the footprint must be reported to SAHRHA and that possible intact finds may require a Phase 2 rescue operation at the cost of the developer.

A small, Later Stone Age open site is located at the northern side of the bridge. It is highly likely that the archaeological site will be disturbed or destroyed during the operational phase of the development. Collection of the material is considered crucial before any development can take place. In this case it is recommended that a Phase 2 rescue operation precede the planned development in order to properly record the site and collect the artifacts. If the recommendation is deemed satisfactory, a collection permit and a permit to destroy the site will have to be issued by SAHRA. The site information and material should be stored at an appropriate repository approved by SAHRA, which in this case is National Museum in Bloemfontein.

References

- Kitching, J.W. 1977. The distribution of Karoo Vertebrate Fauna. Bernard Price Institute for Palaeontological Research. Memoir 1, 1 – 131.
- Kitching 1995. Biostratigraphy of the Dicynodon Assemblage Zone **In**. Rubidge, B. S. (ed.) *Biostratigraphy of the Beaufort Group*. Biostrat. Ser. S.Afr. Comm. Strat. 1, 1 – 45.
- Maggs, T.C. 1976. *Iron Age communities of the southern Highveld*. Occasional Papers of the Natal Museum No. 2.
- Nolte, C.C. 1995. The geology of the Winburg area. Geological Survey of South Africa. Council for Geoscience.
- Partridge, T.C. *et al.* 2006. Cenozoic deposits of the interior. **In**: M.R. Johnson, *et. al.* (eds). *The Geology of South Africa*. Geological Society of South Africa.
- Rubidge, B.S. 1995. (ed) *Biostratigraphy of the Beaufort Group*. Biostrat. Ser. S.Afr. Comm. Strat. 1, 1 – 45.

Declaration

L. Rossouw does independent specialist consulting and is in no way connected with the proponents of the development, other than delivery of consulting services.

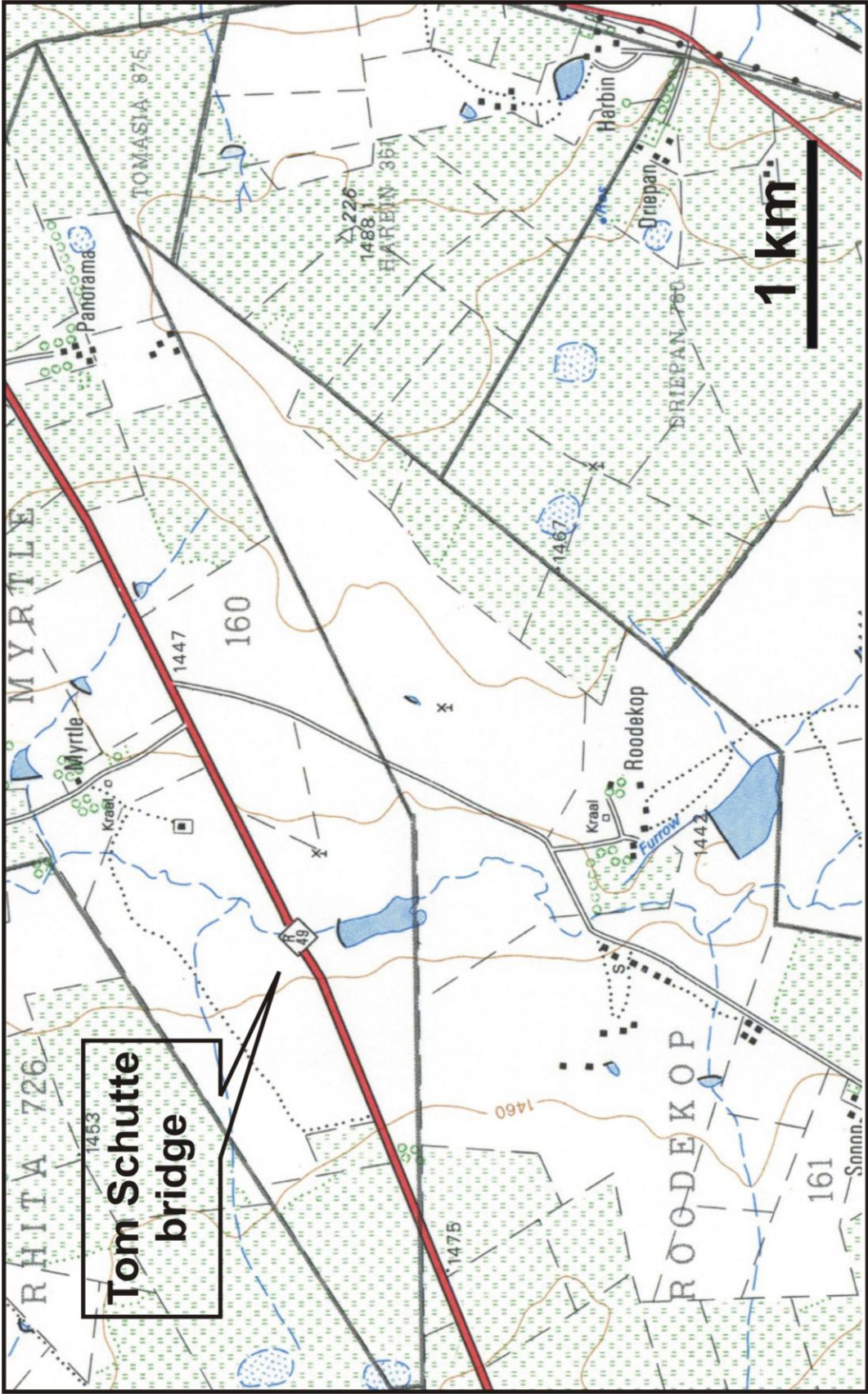


Figure 1 The Tom Schutte Bridge (portion of 1:50 000 scale topographic map 2827 BC Senekal).



Figure 2. Aerial view of the study area. Planned alterations involve re-alignment of the road at the bridge and widening of the bridge.

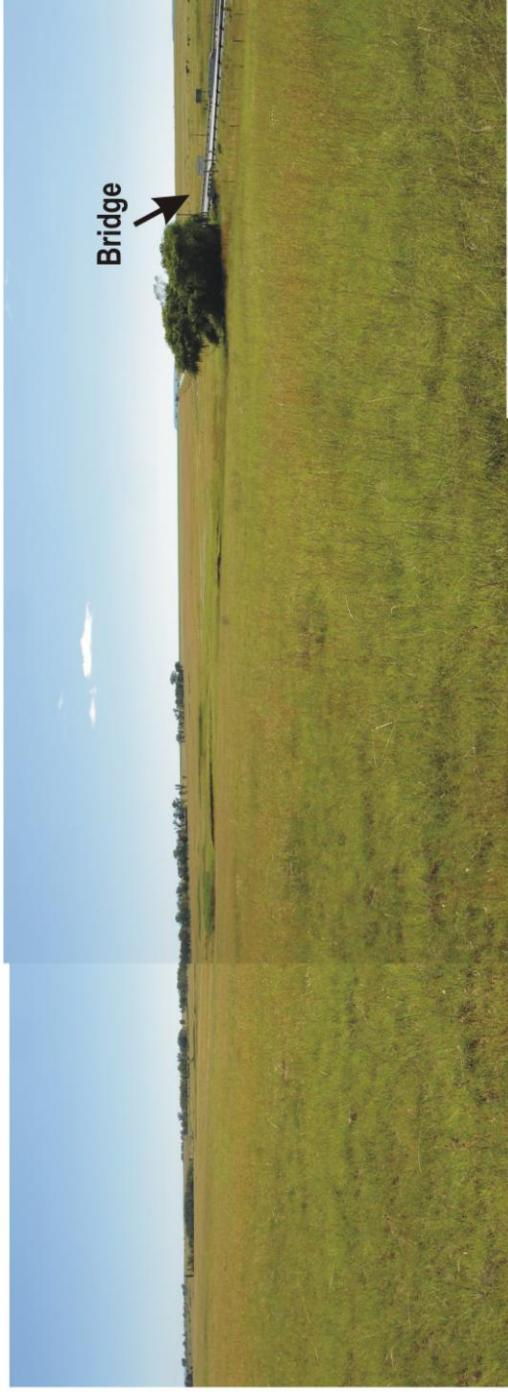
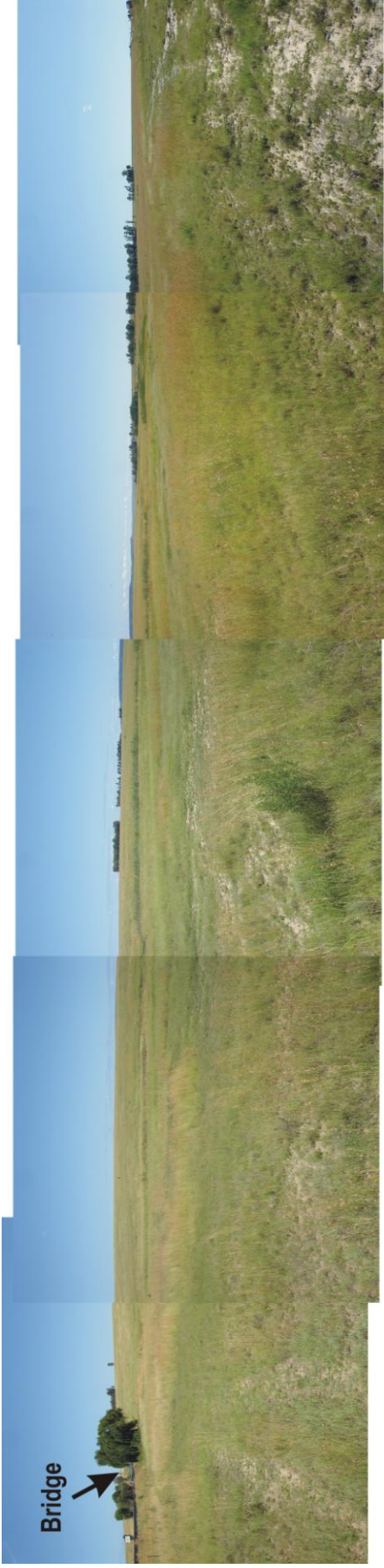


Figure 3. Looking west-northwest (above) and east-southeast (below). The surrounding area is made up of flat to undulating terrain with small streams and open grassland. The veld is undeveloped and used for grazing.

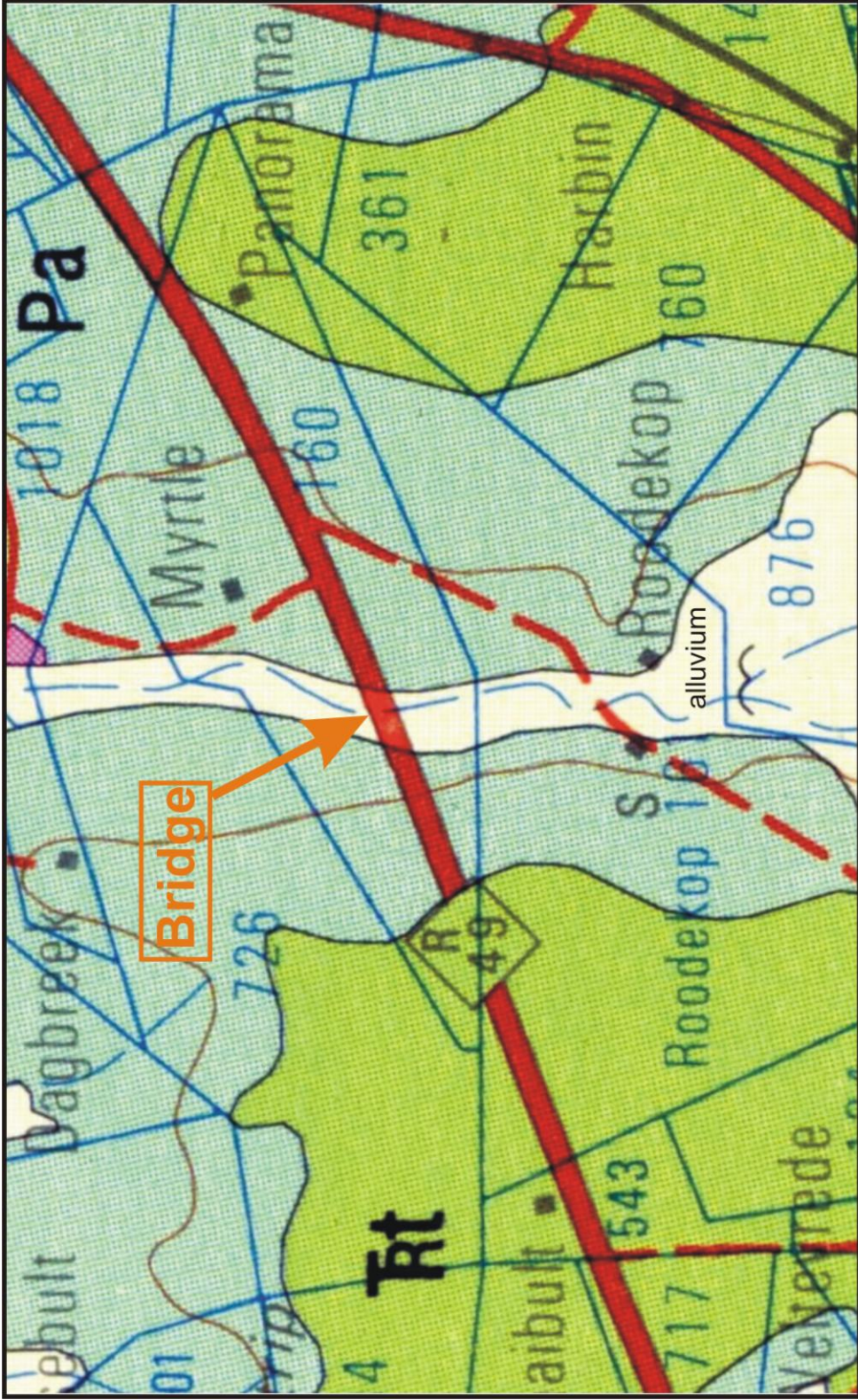


Figure 4. Portion of 1:250 000 scale geological map 2826 Winburg. The survey area is primarily represented by medium to coarse-grained sandstones of the Adelaide Subgroup (*Pa*, Beaufort Group, Karoo Supergroup).



Figure 5. The survey area is primarily underlain by medium to coarse-grained sandstones of the Adelaide Subgroup.



Figure 6. Residual deposits at the site consist of alluvial deposits of Quaternary age. The alluvial deposits are made up of grey and yellow sandy clays varying between 0.1 m and 2.0 m in thickness.

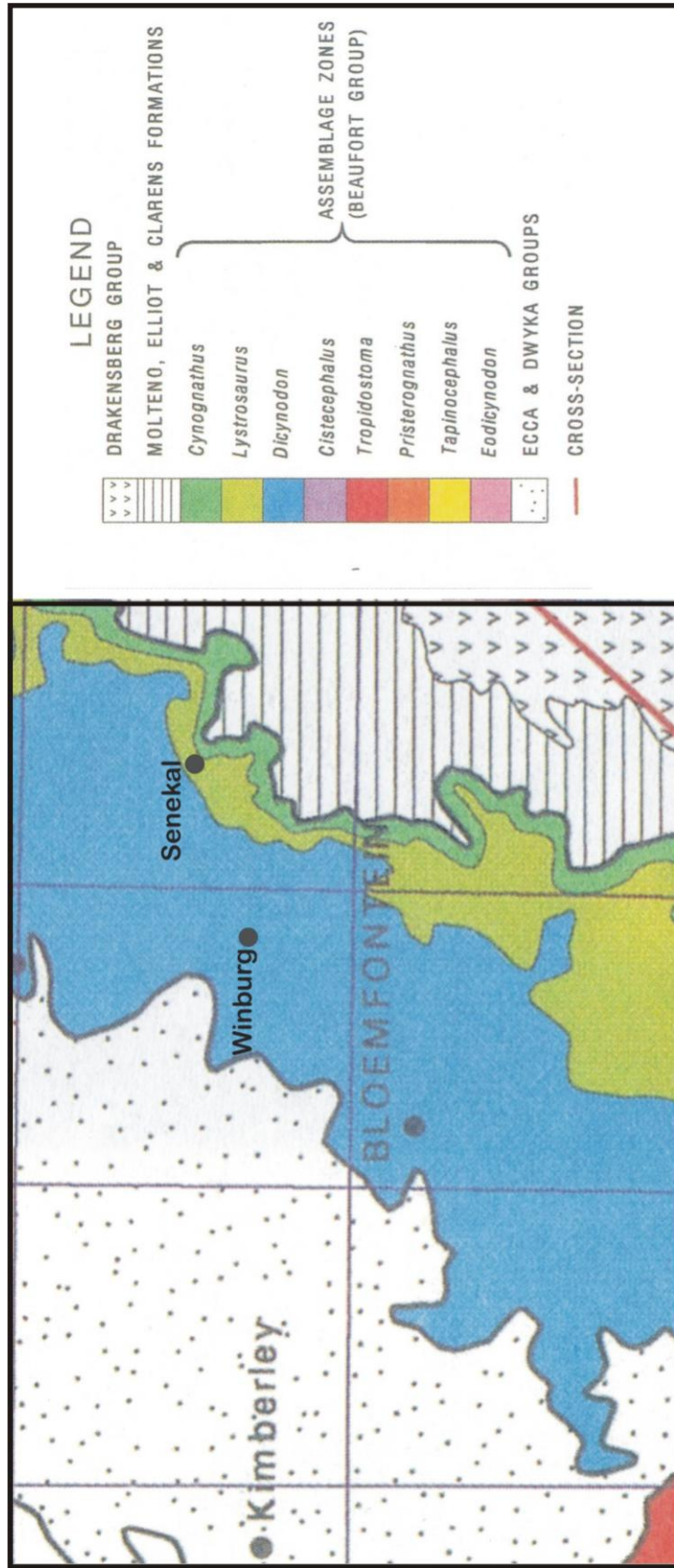


Figure 7. Geographic distribution of vertebrate biozones (Beaufort Group) between Winburg and Senekal (after Rubidge 1995).



Figure 8. Schematic representation of tracks logged during the foot survey (summarized in Appendix 1). The southern side of the bridge is designated Area 1 and the northern side designated Area 2.



Figure 9. A foot survey, covering approximately 10 ha, was conducted along both sides of the bridge. The survey also included the open veld adjacent to the N5; Area , looking east-northeast (right) and Area 2 (above).



Figure 10. The Tom Schutte Spruit near the vicinity of the bridge.

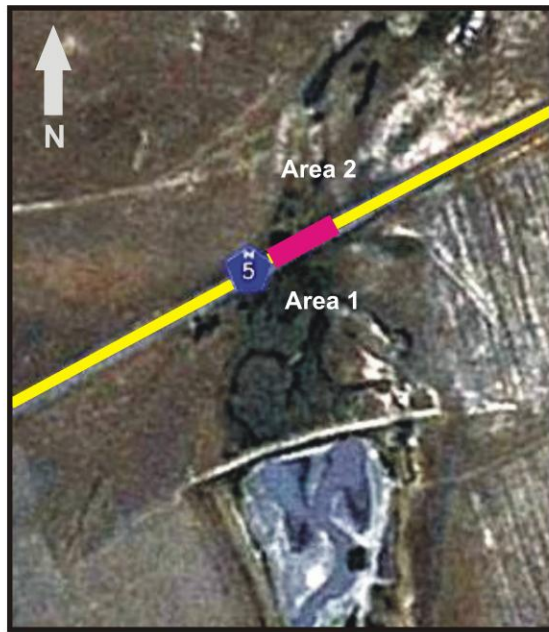


Figure 11. Area 1; the veld on the southern side of the bridge is extensively disturbed by previous road building activities. The area is covered by building rubble, road gravel and tar road related debris.



Figure 12. Area 1; road gravel and chunks of tar litter the veld on the southern side of the bridge.

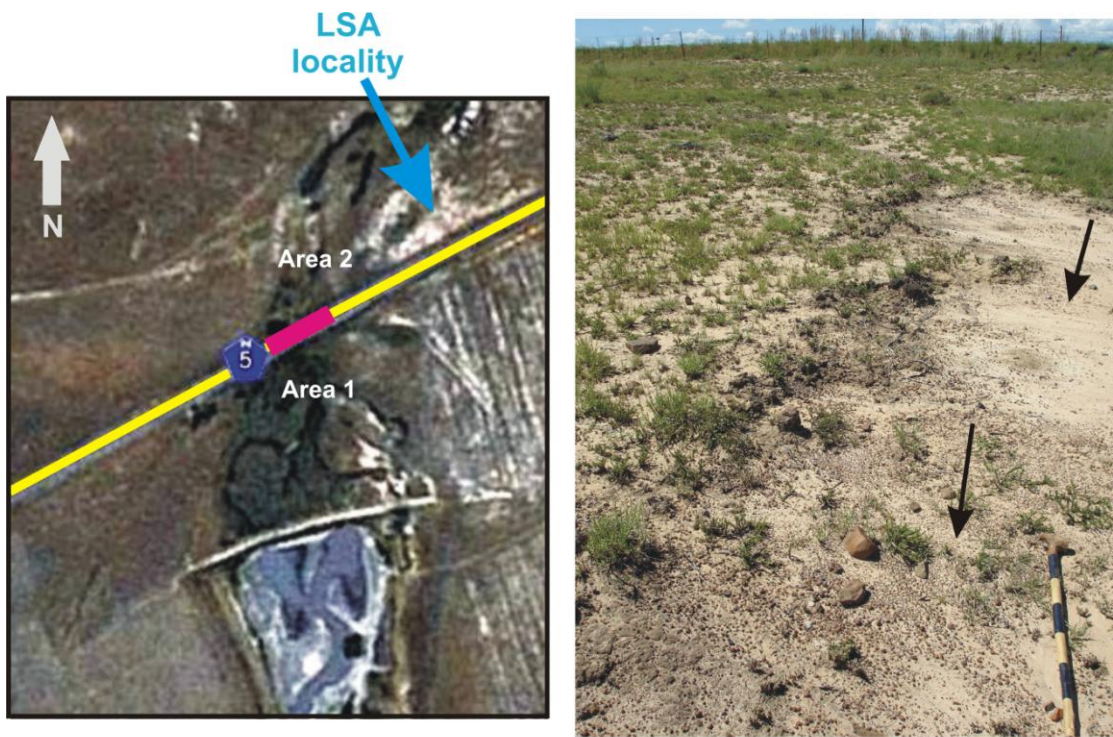


Figure 13. A partially uncapped, Later Stone Age open site located at coordinates S28 22 14.5 E27 32 48.5 in Area 2. The site is situated on an eroded alluvial outcrop approximately 50 m from the eastern bank of the spruit.



Figure 14. The assemblage is microlithic and made from a variety of cryptocrystalline quartz and fossil wood (*Dadoxylon*).

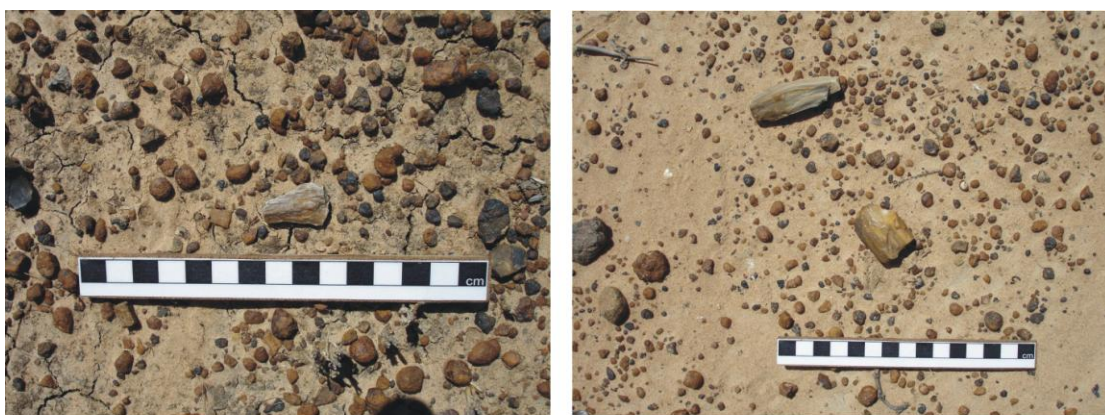


Figure 15. The assemblage is largely represented by formal and informal tools, including flakes, small cores, chunks with flake scars and debitage.

Appendix 1: Survey Log.

	Elevation	Leg Length	Leg Time	Leg Speed	Leg Course	Position
1	1358 m	3 m	00:00:13	0.9 km/h	79° true	S28 22 16.6 E27 32 45.8
2	1358 m	12 m	00:00:26	2 km/h	65° true	S28 22 16.6 E27 32 45.9
3	1359 m	14 m	00:00:19	3 km/h	300° true	S28 22 16.4 E27 32 46.3
4	1358 m	1 m	00:00:01	3 km/h	237° true	S28 22 16.2 E27 32 45.9
5	1360 m	2 m	00:00:12	0.6 km/h	304° true	S28 22 16.2 E27 32 45.8
6	1361 m	3 m	00:00:38	0.3 km/h	10° true	S28 22 16.2 E27 32 45.8
7	1362 m	1 m	00:00:31	0.1 km/h	142° true	S28 22 16.1 E27 32 45.8
8	1364 m	0 m	00:00:15	0.0 km/h	153° true	S28 22 16.1 E27 32 45.8
9	1358 m	0 m	00:00:01	0.7 km/h	284° true	S28 22 16.1 E27 32 45.8
10	1365 m	6 m	00:00:13	2 km/h	259° true	S28 22 16.1 E27 32 45.8
11	1359 m	0 m	00:00:01	0.1 km/h	90° true	S28 22 16.2 E27 32 45.6
12	1361 m	0 m	00:00:01	0.3 km/h	27° true	S28 22 16.2 E27 32 45.6
13	1365 m	0 m	00:00:02	0.2 km/h	33° true	S28 22 16.2 E27 32 45.6
14	1373 m	0 m	00:00:01	0.1 km/h	53° true	S28 22 16.2 E27 32 45.6
15	1366 m	0 m	00:00:02	0.2 km/h	41° true	S28 22 16.2 E27 32 45.6
16	1365 m	0 m	00:00:04	0.3 km/h	59° true	S28 22 16.2 E27 32 45.6
17	1373 m	0 m	00:00:01	0.9 km/h	145° true	S28 22 16.1 E27 32 45.6
18	1367 m	0 m	00:00:03	0.5 km/h	213° true	S28 22 16.2 E27 32 45.6
19	1361 m	0 m	00:00:01	1.2 km/h	191° true	S28 22 16.2 E27 32 45.6
20	1368 m	4 m	00:00:04	4 km/h	227° true	S28 22 16.2 E27 32 45.6
21	1367 m	2 m	00:00:02	4 km/h	232° true	S28 22 16.3 E27 32 45.5
22	1366 m	8 m	00:00:07	4 km/h	229° true	S28 22 16.3 E27 32 45.4
23	1367 m	5 m	00:00:12	1.4 km/h	248° true	S28 22 16.5 E27 32 45.2
24	1366 m	0 m	00:00:04	0.4 km/h	334° true	S28 22 16.5 E27 32 45.1
25	1359 m	0 m	00:00:01	0.2 km/h	341° true	S28 22 16.5 E27 32 45.1
26	1359 m	0 m	00:00:01	0.2 km/h	16° true	S28 22 16.5 E27 32 45.1
27	1377 m	0 m	00:00:01	0.3 km/h	11° true	S28 22 16.5 E27 32 45.1
28	1367 m	0 m	00:00:03	0.0 km/h	270° true	S28 22 16.5 E27 32 45.1
29	1363 m	0 m	00:00:02	0.5 km/h	182° true	S28 22 16.5 E27 32 45.1
30	1374 m	1 m	00:00:01	2 km/h	198° true	S28 22 16.5 E27 32 45.1
31	1369 m	2 m	00:00:02	4 km/h	207° true	S28 22 16.6 E27 32 45.0
32	1367 m	27 m	00:00:21	5 km/h	232° true	S28 22 16.6 E27 32 45.0
33	1367 m	20 m	00:00:16	5 km/h	243° true	S28 22 17.2 E27 32 44.2
34	1368 m	23 m	00:00:19	4 km/h	246° true	S28 22 17.5 E27 32 43.6
35	1368 m	18 m	00:00:19	3 km/h	246° true	S28 22 17.7 E27 32 42.8
36	1368 m	9 m	00:00:10	3 km/h	256° true	S28 22 18.0 E27 32 42.2
37	1367 m	0 m	00:00:03	0.3 km/h	351° true	S28 22 18.1 E27 32 41.9
38	1369 m	6 m	00:00:12	2 km/h	290° true	S28 22 18.0 E27 32 41.9
39	1368 m	5 m	00:00:14	1.4 km/h	289° true	S28 22 18.0 E27 32 41.7
40	1369 m	13 m	00:00:16	3 km/h	246° true	S28 22 17.9 E27 32 41.5
41	1369 m	5 m	00:00:06	3 km/h	229° true	S28 22 18.1 E27 32 41.1
42	1372 m	1 m	00:00:01	4 km/h	240° true	S28 22 18.2 E27 32 40.9
43	1371 m	15 m	00:00:15	4 km/h	234° true	S28 22 18.2 E27 32 40.9
44	1372 m	0 m	00:00:15	0.1 km/h	316° true	S28 22 18.5 E27 32 40.4
45	1367 m	1 m	00:00:01	2 km/h	304° true	S28 22 18.5 E27 32 40.4
46	1376 m	1 m	00:00:01	4 km/h	226° true	S28 22 18.5 E27 32 40.4
47	1372 m	7 m	00:00:09	3 km/h	225° true	S28 22 18.5 E27 32 40.4
48	1373 m	1 m	00:00:09	0.2 km/h	296° true	S28 22 18.7 E27 32 40.2
49	1366 m	0 m	00:00:01	0.5 km/h	308° true	S28 22 18.7 E27 32 40.2
50	1380 m	1 m	00:00:01	2 km/h	194° true	S28 22 18.7 E27 32 40.2
51	1376 m	2 m	00:00:02	3 km/h	206° true	S28 22 18.7 E27 32 40.2
52	1374 m	13 m	00:00:11	4 km/h	240° true	S28 22 18.7 E27 32 40.1
53	1377 m	3 m	00:00:15	0.6 km/h	261° true	S28 22 18.9 E27 32 39.7
54	1377 m	7 m	00:00:14	2 km/h	239° true	S28 22 19.0 E27 32 39.6

55	1377 m	11 m	00:00:17	2 km/h	245° true	S28 22 19.1 E27 32 39.4
56	1377 m	1 m	00:00:07	0.7 km/h	333° true	S28 22 19.2 E27 32 39.0
57	1378 m	9 m	00:00:08	4 km/h	248° true	S28 22 19.2 E27 32 39.0
58	1380 m	23 m	00:00:20	4 km/h	235° true	S28 22 19.3 E27 32 38.7
59	1380 m	17 m	00:00:16	4 km/h	230° true	S28 22 19.7 E27 32 38.0
60	1382 m	13 m	00:00:17	3 km/h	268° true	S28 22 20.1 E27 32 37.5
61	1383 m	7 m	00:00:42	0.6 km/h	240° true	S28 22 20.1 E27 32 37.0
62	1385 m	18 m	00:00:14	5 km/h	349° true	S28 22 20.2 E27 32 36.8
63	1385 m	26 m	00:00:21	4 km/h	59° true	S28 22 19.6 E27 32 36.7
64	1386 m	12 m	00:00:13	3 km/h	63° true	S28 22 19.2 E27 32 37.5
65	1386 m	8 m	00:00:13	2 km/h	25° true	S28 22 19.0 E27 32 37.9
66	1386 m	0 m	00:00:05	0.3 km/h	244° true	S28 22 18.8 E27 32 38.0
67	1381 m	0 m	00:00:01	0.2 km/h	180° true	S28 22 18.8 E27 32 38.0
68	1384 m	0 m	00:00:04	0.3 km/h	174° true	S28 22 18.8 E27 32 38.0
69	1393 m	0 m	00:00:01	0.3 km/h	180° true	S28 22 18.8 E27 32 38.0
70	1387 m	0 m	00:00:06	0.1 km/h	310° true	S28 22 18.8 E27 32 38.0
71	1384 m	0 m	00:00:04	0.4 km/h	151° true	S28 22 18.8 E27 32 38.0
72	1386 m	0 m	00:00:03	0.3 km/h	139° true	S28 22 18.8 E27 32 38.0
73	1383 m	0 m	00:00:01	0.8 km/h	132° true	S28 22 18.8 E27 32 38.0
74	1393 m	0 m	00:00:01	0.0 km/h	270° true	S28 22 18.8 E27 32 38.0
75	1389 m	0 m	00:00:49	0.0 km/h	39° true	S28 22 18.8 E27 32 38.0
76	1388 m	0 m	00:00:02	0.0 km/h	111° true	S28 22 18.8 E27 32 38.0
77	1391 m	0 m	00:00:20	0.0 km/h	129° true	S28 22 18.8 E27 32 38.0
78	1391 m	11 m	00:00:18	2 km/h	49° true	S28 22 18.8 E27 32 38.0
79	1390 m	25 m	00:00:19	5 km/h	59° true	S28 22 18.6 E27 32 38.3
80	1388 m	24 m	00:00:20	4 km/h	65° true	S28 22 18.2 E27 32 39.1
81	1387 m	9 m	00:00:07	5 km/h	78° true	S28 22 17.9 E27 32 39.9
82	1388 m	26 m	00:00:21	4 km/h	66° true	S28 22 17.8 E27 32 40.2
83	1387 m	18 m	00:00:18	4 km/h	54° true	S28 22 17.5 E27 32 41.1
84	1387 m	5 m	00:00:08	2 km/h	307° true	S28 22 17.1 E27 32 41.6
85	1387 m	8 m	00:00:15	2 km/h	288° true	S28 22 17.0 E27 32 41.5
86	1387 m	2 m	00:00:31	0.2 km/h	304° true	S28 22 16.9 E27 32 41.2
87	1390 m	3 m	00:00:31	0.3 km/h	341° true	S28 22 16.9 E27 32 41.2
88	1383 m	0 m	00:00:01	0.4 km/h	120° true	S28 22 16.8 E27 32 41.2
89	1386 m	0 m	00:00:01	0.4 km/h	109° true	S28 22 16.8 E27 32 41.2
90	1389 m	0 m	00:00:02	0.1 km/h	82° true	S28 22 16.8 E27 32 41.2
91	1394 m	0 m	00:00:01	0.2 km/h	33° true	S28 22 16.8 E27 32 41.2
92	1390 m	0 m	00:00:02	0.3 km/h	112° true	S28 22 16.8 E27 32 41.2
93	1389 m	1 m	00:00:10	0.3 km/h	122° true	S28 22 16.8 E27 32 41.2
94	1386 m	0 m	00:00:01	0.1 km/h	12° true	S28 22 16.8 E27 32 41.2
95	1394 m	0 m	00:00:01	0.2 km/h	48° true	S28 22 16.8 E27 32 41.2
96	1390 m	5 m	00:00:08	2 km/h	3° true	S28 22 16.8 E27 32 41.2
97	1389 m	3 m	00:00:03	4 km/h	1° true	S28 22 16.7 E27 32 41.2
98	1390 m	4 m	00:00:14	1.1 km/h	27° true	S28 22 16.6 E27 32 41.2
99	1390 m	1 m	00:00:25	0.1 km/h	305° true	S28 22 16.5 E27 32 41.3
100	1384 m	0 m	00:00:01	1.0 km/h	28° true	S28 22 16.4 E27 32 41.3
101	1398 m	1 m	00:00:01	3 km/h	13° true	S28 22 16.4 E27 32 41.3
102	1391 m	1 m	00:00:01	4 km/h	16° true	S28 22 16.4 E27 32 41.3
103	1391 m	6 m	00:00:09	2 km/h	29° true	S28 22 16.4 E27 32 41.3
104	1385 m	0 m	00:00:01	0.1 km/h	300° true	S28 22 16.2 E27 32 41.4
105	1400 m	0 m	00:00:01	0.1 km/h	90° true	S28 22 16.2 E27 32 41.4
106	1392 m	0 m	00:00:02	0.1 km/h	72° true	S28 22 16.2 E27 32 41.4
107	1391 m	0 m	00:00:03	0.1 km/h	209° true	S28 22 16.2 E27 32 41.4
108	1388 m	0 m	00:00:02	0.2 km/h	130° true	S28 22 16.2 E27 32 41.4
109	1391 m	0 m	00:00:03	0.2 km/h	115° true	S28 22 16.2 E27 32 41.4
110	1386 m	0 m	00:00:01	0.2 km/h	114° true	S28 22 16.2 E27 32 41.4
111	1395 m	1 m	00:00:02	0.9 km/h	166° true	S28 22 16.2 E27 32 41.4
112	1390 m	0 m	00:00:01	0.1 km/h	120° true	S28 22 16.2 E27 32 41.4

113	1391 m	0 m	00:00:04	0.2 km/h	335° true	S28 22 16.2 E27 32 41.4
114	1385 m	0 m	00:00:01	0.3 km/h	247° true	S28 22 16.2 E27 32 41.4
115	1399 m	0 m	00:00:01	0.1 km/h	0° true	S28 22 16.2 E27 32 41.4
116	1392 m	0 m	00:00:02	0.0 km/h	90° true	S28 22 16.2 E27 32 41.4
117	1391 m	0 m	00:00:01	0.0 km/h	90° true	S28 22 16.2 E27 32 41.4
118	1388 m	0 m	00:00:01	0.3 km/h	349° true	S28 22 16.2 E27 32 41.4
119	1395 m	0 m	00:00:01	0.4 km/h	58° true	S28 22 16.2 E27 32 41.4
120	1392 m	1 m	00:00:12	0.4 km/h	312° true	S28 22 16.2 E27 32 41.4
121	1392 m	5 m	00:00:11	2 km/h	21° true	S28 22 16.2 E27 32 41.4
122	1385 m	0 m	00:00:01	0.2 km/h	310° true	S28 22 16.1 E27 32 41.4
123	1395 m	0 m	00:00:03	0.1 km/h	24° true	S28 22 16.1 E27 32 41.4
124	1393 m	0 m	00:00:07	0.2 km/h	134° true	S28 22 16.1 E27 32 41.4
125	1386 m	0 m	00:00:01	0.1 km/h	270° true	S28 22 16.1 E27 32 41.4
126	1404 m	0 m	00:00:01	0.6 km/h	354° true	S28 22 16.1 E27 32 41.4
127	1394 m	0 m	00:00:02	0.4 km/h	7° true	S28 22 16.1 E27 32 41.4
128	1390 m	0 m	00:00:01	0.7 km/h	58° true	S28 22 16.1 E27 32 41.4
129	1395 m	2 m	00:00:02	3 km/h	29° true	S28 22 16.1 E27 32 41.4
130	1393 m	1 m	00:00:01	5 km/h	15° true	S28 22 16.0 E27 32 41.5
131	1392 m	6 m	00:00:06	3 km/h	2° true	S28 22 16.0 E27 32 41.5
132	1393 m	5 m	00:00:04	4 km/h	349° true	S28 22 15.8 E27 32 41.5
133	1394 m	12 m	00:00:12	4 km/h	15° true	S28 22 15.6 E27 32 41.5
134	1393 m	7 m	00:00:13	2 km/h	341° true	S28 22 15.2 E27 32 41.6
135	1394 m	2 m	00:00:23	0.3 km/h	137° true	S28 22 15.0 E27 32 41.5
136	1394 m	1 m	00:00:09	0.6 km/h	279° true	S28 22 15.1 E27 32 41.5
137	1395 m	5 m	00:00:04	4 km/h	33° true	S28 22 15.1 E27 32 41.5
138	1395 m	6 m	00:00:05	5 km/h	14° true	S28 22 14.9 E27 32 41.6
139	1394 m	13 m	00:00:17	3 km/h	29° true	S28 22 14.7 E27 32 41.6
140	1395 m	1 m	00:00:25	0.1 km/h	155° true	S28 22 14.4 E27 32 41.9
141	1395 m	1 m	00:00:13	0.2 km/h	81° true	S28 22 14.4 E27 32 41.9
142	1395 m	5 m	00:00:04	5 km/h	57° true	S28 22 14.4 E27 32 41.9
143	1395 m	11 m	00:00:11	4 km/h	7° true	S28 22 14.3 E27 32 42.1
144	1395 m	5 m	00:00:05	3 km/h	72° true	S28 22 14.0 E27 32 42.1
145	1395 m	12 m	00:00:15	3 km/h	151° true	S28 22 13.9 E27 32 42.3
146	1395 m	1 m	00:00:13	0.2 km/h	337° true	S28 22 14.2 E27 32 42.5
147	1396 m	0 m	00:00:02	0.4 km/h	67° true	S28 22 14.2 E27 32 42.5
148	1391 m	0 m	00:00:01	1.3 km/h	83° true	S28 22 14.2 E27 32 42.5
149	1400 m	0 m	00:00:01	1.1 km/h	88° true	S28 22 14.2 E27 32 42.5
150	1396 m	3 m	00:00:13	0.9 km/h	243° true	S28 22 14.2 E27 32 42.5
151	1396 m	1 m	00:00:11	0.4 km/h	280° true	S28 22 14.3 E27 32 42.4
152	1391 m	0 m	00:00:01	0.2 km/h	90° true	S28 22 14.3 E27 32 42.4
153	1397 m	0 m	00:00:01	0.2 km/h	41° true	S28 22 14.3 E27 32 42.4
154	1391 m	0 m	00:00:01	0.4 km/h	81° true	S28 22 14.3 E27 32 42.4
155	1406 m	0 m	00:00:01	0.4 km/h	85° true	S28 22 14.3 E27 32 42.4
156	1398 m	0 m	00:00:02	0.1 km/h	348° true	S28 22 14.3 E27 32 42.4
157	1397 m	0 m	00:00:06	0.0 km/h	30° true	S28 22 14.3 E27 32 42.4
158	1402 m	0 m	00:00:01	0.4 km/h	76° true	S28 22 14.3 E27 32 42.4
159	1401 m	0 m	00:00:01	0.6 km/h	111° true	S28 22 14.3 E27 32 42.4
160	1398 m	0 m	00:00:02	0.4 km/h	114° true	S28 22 14.3 E27 32 42.4
161	1397 m	1 m	00:00:14	0.2 km/h	236° true	S28 22 14.3 E27 32 42.4
162	1398 m	3 m	00:00:04	2 km/h	212° true	S28 22 14.3 E27 32 42.4
163	1398 m	3 m	00:00:03	4 km/h	184° true	S28 22 14.3 E27 32 42.3
164	1399 m	2 m	00:00:04	2 km/h	258° true	S28 22 14.5 E27 32 42.3
165	1399 m	10 m	00:00:08	5 km/h	331° true	S28 22 14.5 E27 32 42.2
166	1399 m	9 m	00:00:15	2 km/h	276° true	S28 22 14.2 E27 32 42.1
167	1400 m	5 m	00:00:06	3 km/h	0° true	S28 22 14.2 E27 32 41.7
168	1400 m	2 m	00:00:15	0.4 km/h	100° true	S28 22 14.0 E27 32 41.7
169	1400 m	5 m	00:00:08	2 km/h	235° true	S28 22 14.0 E27 32 41.8
170	1401 m	22 m	00:00:19	4 km/h	260° true	S28 22 14.1 E27 32 41.6

171	1402 m	13 m	00:00:11	4 km/h	259° true	S28 22 14.2 E27 32 40.8
172	1403 m	3 m	00:00:03	4 km/h	276° true	S28 22 14.3 E27 32 40.4
173	1403 m	19 m	00:00:16	4 km/h	229° true	S28 22 14.3 E27 32 40.2
174	1405 m	19 m	00:00:16	4 km/h	221° true	S28 22 14.7 E27 32 39.7
175	1405 m	7 m	00:00:06	4 km/h	225° true	S28 22 15.2 E27 32 39.3
176	1405 m	22 m	00:00:19	4 km/h	238° true	S28 22 15.3 E27 32 39.1
177	1408 m	5 m	00:00:04	4 km/h	265° true	S28 22 15.7 E27 32 38.4
178	1407 m	19 m	00:00:19	4 km/h	243° true	S28 22 15.7 E27 32 38.2
179	1409 m	4 m	00:00:08	2 km/h	242° true	S28 22 16.0 E27 32 37.6
180	1408 m	11 m	00:00:16	2 km/h	195° true	S28 22 16.0 E27 32 37.5
181	1408 m	2 m	00:00:11	0.5 km/h	99° true	S28 22 16.4 E27 32 37.4
182	1404 m	0 m	00:00:02	0.4 km/h	73° true	S28 22 16.4 E27 32 37.5
183	1415 m	0 m	00:00:01	0.2 km/h	33° true	S28 22 16.4 E27 32 37.5
184	1407 m	0 m	00:00:03	0.2 km/h	36° true	S28 22 16.4 E27 32 37.5
185	1402 m	0 m	00:00:01	0.8 km/h	176° true	S28 22 16.4 E27 32 37.5
186	1417 m	0 m	00:00:01	0.8 km/h	178° true	S28 22 16.4 E27 32 37.5
187	1409 m	6 m	00:00:11	2 km/h	309° true	S28 22 16.4 E27 32 37.5
188	1410 m	11 m	00:00:09	4 km/h	48° true	S28 22 16.3 E27 32 37.3
189	1409 m	28 m	00:00:22	5 km/h	67° true	S28 22 16.0 E27 32 37.6
190	1408 m	20 m	00:00:18	4 km/h	94° true	S28 22 15.7 E27 32 38.6
191	1408 m	1 m	00:00:02	1.0 km/h	10° true	S28 22 15.7 E27 32 39.3
192	1408 m	8 m	00:00:16	2 km/h	68° true	S28 22 15.7 E27 32 39.3
193	1408 m	8 m	00:00:07	4 km/h	140° true	S28 22 15.6 E27 32 39.5
194	1408 m	7 m	00:00:16	2 km/h	96° true	S28 22 15.8 E27 32 39.7
195	1408 m	4 m	00:00:59	0.3 km/h	107° true	S28 22 15.8 E27 32 40.0
196	1408 m	1 m	00:00:16	0.2 km/h	188° true	S28 22 15.9 E27 32 40.1
197	1409 m	1 m	00:00:04	0.6 km/h	249° true	S28 22 15.9 E27 32 40.1
198	1408 m	18 m	00:00:17	4 km/h	124° true	S28 22 15.9 E27 32 40.1
199	1408 m	17 m	00:00:14	4 km/h	120° true	S28 22 16.2 E27 32 40.6
200	1408 m	6 m	00:00:05	4 km/h	86° true	S28 22 16.5 E27 32 41.2
201	1408 m	5 m	00:00:04	4 km/h	80° true	S28 22 16.5 E27 32 41.4
202	1408 m	14 m	00:00:16	3 km/h	124° true	S28 22 16.5 E27 32 41.6
203	1409 m	10 m	00:00:14	3 km/h	134° true	S28 22 16.7 E27 32 42.0
204	1409 m	1 m	00:00:02	2 km/h	267° true	S28 22 17.0 E27 32 42.3
205	1406 m	0 m	00:00:01	1.5 km/h	253° true	S28 22 17.0 E27 32 42.2
206	1403 m	2 m	00:00:02	3 km/h	245° true	S28 22 17.0 E27 32 42.2
207	1408 m	2 m	00:00:11	0.6 km/h	334° true	S28 22 17.0 E27 32 42.2
208	1409 m	2 m	00:00:36	0.2 km/h	32° true	S28 22 16.9 E27 32 42.1
209	1408 m	0 m	00:00:07	0.3 km/h	45° true	S28 22 16.9 E27 32 42.2
210	1410 m	0 m	00:00:26	0.0 km/h	122° true	S28 22 16.9 E27 32 42.2
211	1410 m	0 m	00:00:03	0.3 km/h	200° true	S28 22 16.9 E27 32 42.2
212	1408 m	1 m	00:00:19	0.2 km/h	349° true	S28 22 16.9 E27 32 42.2
213	1409 m	3 m	00:00:15	0.7 km/h	150° true	S28 22 16.9 E27 32 42.2
214	1407 m	1 m	00:00:04	0.5 km/h	223° true	S28 22 16.9 E27 32 42.2
215	1404 m	0 m	00:00:01	1.0 km/h	48° true	S28 22 17.0 E27 32 42.2
216	1408 m	0 m	00:00:01	0.5 km/h	86° true	S28 22 17.0 E27 32 42.2
217	1412 m	0 m	00:00:01	0.9 km/h	20° true	S28 22 17.0 E27 32 42.2
218	1408 m	2 m	00:00:04	2 km/h	65° true	S28 22 16.9 E27 32 42.2
219	1409 m	7 m	00:00:14	2 km/h	92° true	S28 22 16.9 E27 32 42.3
220	1408 m	4 m	00:00:23	0.6 km/h	265° true	S28 22 16.9 E27 32 42.5
221	1410 m	5 m	00:00:14	1.2 km/h	254° true	S28 22 16.9 E27 32 42.4
222	1404 m	1 m	00:00:01	2 km/h	265° true	S28 22 17.0 E27 32 42.2
223	1414 m	1 m	00:00:15	0.3 km/h	215° true	S28 22 17.0 E27 32 42.2
224	1409 m	4 m	00:00:12	1.2 km/h	173° true	S28 22 17.0 E27 32 42.2
225	1410 m	6 m	00:00:16	1.4 km/h	211° true	S28 22 17.1 E27 32 42.2
226	1411 m	5 m	00:00:16	1.1 km/h	132° true	S28 22 17.3 E27 32 42.1
227	1412 m	5 m	00:00:05	4 km/h	70° true	S28 22 17.4 E27 32 42.2
228	1412 m	11 m	00:00:12	3 km/h	74° true	S28 22 17.4 E27 32 42.4

229	1412 m	8 m	00:00:16	2 km/h	34° true	S28 22 17.3 E27 32 42.8
230	1412 m	16 m	00:00:18	3 km/h	34° true	S28 22 17.0 E27 32 42.9
231	1412 m	10 m	00:00:08	4 km/h	14° true	S28 22 16.6 E27 32 43.3
232	1412 m	12 m	00:00:10	4 km/h	31° true	S28 22 16.3 E27 32 43.3
233	1414 m	4 m	00:00:03	4 km/h	86° true	S28 22 16.0 E27 32 43.6
234	1413 m	6 m	00:00:06	4 km/h	95° true	S28 22 16.0 E27 32 43.7
235	1414 m	19 m	00:00:18	4 km/h	58° true	S28 22 16.0 E27 32 43.9
236	1413 m	15 m	00:00:14	4 km/h	50° true	S28 22 15.6 E27 32 44.5
237	1414 m	22 m	00:00:19	4 km/h	46° true	S28 22 15.3 E27 32 45.0
238	1414 m	20 m	00:00:17	4 km/h	48° true	S28 22 14.8 E27 32 45.5
239	1414 m	7 m	00:00:07	3 km/h	64° true	S28 22 14.4 E27 32 46.1
240	1414 m	19 m	00:00:17	4 km/h	48° true	S28 22 14.3 E27 32 46.3
241	1414 m	20 m	00:00:17	4 km/h	58° true	S28 22 13.9 E27 32 46.8
242	1415 m	6 m	00:00:05	4 km/h	51° true	S28 22 13.6 E27 32 47.4
243	1416 m	15 m	00:00:14	4 km/h	148° true	S28 22 13.4 E27 32 47.6
244	1416 m	13 m	00:00:11	4 km/h	151° true	S28 22 13.9 E27 32 47.9
245	1416 m	3 m	00:00:16	0.6 km/h	106° true	S28 22 14.2 E27 32 48.1
246	1416 m	1 m	00:00:02	1.5 km/h	157° true	S28 22 14.2 E27 32 48.2
247	1407 m	0 m	00:00:01	0.1 km/h	210° true	S28 22 14.3 E27 32 48.2
248	1421 m	0 m	00:00:01	0.2 km/h	66° true	S28 22 14.3 E27 32 48.2
249	1417 m	0 m	00:00:02	0.1 km/h	139° true	S28 22 14.3 E27 32 48.2
250	1420 m	0 m	00:00:01	0.5 km/h	116° true	S28 22 14.3 E27 32 48.2
251	1417 m	1 m	00:00:13	0.2 km/h	355° true	S28 22 14.3 E27 32 48.2
252	1410 m	0 m	00:00:01	0.2 km/h	150° true	S28 22 14.3 E27 32 48.2
253	1417 m	0 m	00:00:01	0.1 km/h	204° true	S28 22 14.3 E27 32 48.2
254	1422 m	0 m	00:00:01	0.1 km/h	196° true	S28 22 14.3 E27 32 48.2
255	1420 m	0 m	00:00:02	0.3 km/h	246° true	S28 22 14.3 E27 32 48.2
256	1417 m	0 m	00:00:01	0.8 km/h	280° true	S28 22 14.3 E27 32 48.2
257	1417 m	1 m	00:00:05	0.4 km/h	306° true	S28 22 14.3 E27 32 48.2
258	1414 m	0 m	00:00:04	0.2 km/h	48° true	S28 22 14.2 E27 32 48.2
259	1416 m	0 m	00:00:05	0.1 km/h	192° true	S28 22 14.2 E27 32 48.2
260	1425 m	0 m	00:00:01	0.1 km/h	90° true	S28 22 14.2 E27 32 48.2
261	1415 m	0 m	00:00:01	0.1 km/h	16° true	S28 22 14.2 E27 32 48.2
262	1415 m	0 m	00:00:03	0.1 km/h	116° true	S28 22 14.2 E27 32 48.2
263	1419 m	0 m	00:00:03	0.3 km/h	145° true	S28 22 14.2 E27 32 48.2
264	1417 m	3 m	00:00:12	0.8 km/h	159° true	S28 22 14.3 E27 32 48.2
265	1409 m	0 m	00:00:01	0.8 km/h	193° true	S28 22 14.3 E27 32 48.3
266	1423 m	0 m	00:00:01	0.4 km/h	270° true	S28 22 14.3 E27 32 48.3
267	1418 m	1 m	00:00:17	0.2 km/h	274° true	S28 22 14.3 E27 32 48.3
268	1419 m	0 m	00:00:07	0.1 km/h	239° true	S28 22 14.3 E27 32 48.2
269	1415 m	0 m	00:00:01	0.1 km/h	270° true	S28 22 14.3 E27 32 48.2
270	1409 m	0 m	00:00:01	0.1 km/h	270° true	S28 22 14.3 E27 32 48.2
271	1419 m	0 m	00:00:01	0.0 km/h	0° true	S28 22 14.3 E27 32 48.2
272	1417 m	0 m	00:00:04	0.0 km/h	180° true	S28 22 14.3 E27 32 48.2
273	1412 m	0 m	00:00:01	0.0 km/h	139° true	S28 22 14.3 E27 32 48.2
274	1424 m	0 m	00:00:01	0.3 km/h	302° true	S28 22 14.3 E27 32 48.2
275	1420 m	0 m	00:00:01	0.0 km/h	0° true	S28 22 14.3 E27 32 48.2
276	1423 m	0 m	00:00:01	0.2 km/h	90° true	S28 22 14.3 E27 32 48.2
277	1419 m	0 m	00:00:01	0.1 km/h	120° true	S28 22 14.3 E27 32 48.2
278	1412 m	0 m	00:00:01	0.2 km/h	66° true	S28 22 14.3 E27 32 48.2
279	1418 m	0 m	00:00:01	0.2 km/h	48° true	S28 22 14.3 E27 32 48.2
280	1415 m	0 m	00:00:02	0.0 km/h	319° true	S28 22 14.3 E27 32 48.2
281	1422 m	0 m	00:00:01	0.6 km/h	28° true	S28 22 14.3 E27 32 48.2
282	1420 m	0 m	00:00:01	0.4 km/h	47° true	S28 22 14.3 E27 32 48.2
283	1417 m	0 m	00:00:01	0.2 km/h	127° true	S28 22 14.3 E27 32 48.2
284	1417 m	0 m	00:00:03	0.1 km/h	264° true	S28 22 14.3 E27 32 48.2
285	1420 m	1 m	00:00:24	0.2 km/h	84° true	S28 22 14.3 E27 32 48.2
286	1416 m	0 m	00:00:01	0.6 km/h	66° true	S28 22 14.3 E27 32 48.3

287	1405 m	0 m	00:00:01	0.7 km/h	85° true	S28 22 14.3 E27 32 48.3
288	1430 m	1 m	00:00:01	2 km/h	143° true	S28 22 14.3 E27 32 48.3
289	1419 m	1 m	00:00:02	2 km/h	156° true	S28 22 14.3 E27 32 48.3
290	1413 m	0 m	00:00:01	0.6 km/h	151° true	S28 22 14.4 E27 32 48.3
291	1414 m	0 m	00:00:02	0.2 km/h	200° true	S28 22 14.4 E27 32 48.3
292	1416 m	0 m	00:00:04	0.3 km/h	247° true	S28 22 14.4 E27 32 48.3
293	1425 m	0 m	00:00:01	0.4 km/h	270° true	S28 22 14.4 E27 32 48.3
294	1418 m	0 m	00:00:03	0.3 km/h	270° true	S28 22 14.4 E27 32 48.3
295	1421 m	0 m	00:00:01	0.4 km/h	270° true	S28 22 14.4 E27 32 48.3
296	1419 m	0 m	00:00:17	0.1 km/h	336° true	S28 22 14.4 E27 32 48.3
297	1420 m	0 m	00:00:04	0.1 km/h	114° true	S28 22 14.4 E27 32 48.3
298	1419 m	0 m	00:00:21	0.1 km/h	78° true	S28 22 14.4 E27 32 48.3
299	1420 m	1 m	00:00:29	0.1 km/h	345° true	S28 22 14.4 E27 32 48.3
300	1420 m	1 m	00:00:24	0.1 km/h	191° true	S28 22 14.3 E27 32 48.3
301	1420 m	0 m	00:00:07	0.0 km/h	90° true	S28 22 14.4 E27 32 48.3
302	1421 m	0 m	00:00:34	0.1 km/h	217° true	S28 22 14.4 E27 32 48.3
303	1422 m	0 m	00:00:04	0.0 km/h	240° true	S28 22 14.4 E27 32 48.3
304	1420 m	2 m	00:00:11	0.6 km/h	232° true	S28 22 14.4 E27 32 48.3
305	1422 m	3 m	00:00:03	4 km/h	290° true	S28 22 14.4 E27 32 48.2
306	1421 m	1 m	00:00:06	0.8 km/h	290° true	S28 22 14.4 E27 32 48.1
307	1420 m	3 m	00:00:08	1.5 km/h	19° true	S28 22 14.4 E27 32 48.1
308	1415 m	0 m	00:00:02	0.5 km/h	96° true	S28 22 14.3 E27 32 48.1
309	1425 m	0 m	00:00:02	0.1 km/h	164° true	S28 22 14.3 E27 32 48.1
310	1425 m	0 m	00:00:01	0.2 km/h	161° true	S28 22 14.3 E27 32 48.1
311	1429 m	0 m	00:00:01	0.0 km/h	180° true	S28 22 14.3 E27 32 48.1
312	1420 m	0 m	00:00:01	0.1 km/h	204° true	S28 22 14.3 E27 32 48.1
313	1420 m	1 m	00:00:02	1.0 km/h	120° true	S28 22 14.3 E27 32 48.1
314	1420 m	11 m	00:00:14	3 km/h	127° true	S28 22 14.3 E27 32 48.1
315	1419 m	0 m	00:00:02	0.7 km/h	215° true	S28 22 14.5 E27 32 48.5
316	1420 m	5 m	00:00:14	1.4 km/h	152° true	S28 22 14.5 E27 32 48.4
317	1421 m	0 m	00:00:04	0.1 km/h	90° true	S28 22 14.7 E27 32 48.5
318	1421 m	6 m	00:00:05	5 km/h	63° true	S28 22 14.7 E27 32 48.5
319	1423 m	12 m	00:00:14	3 km/h	167° true	S28 22 14.6 E27 32 48.8
320	1422 m	0 m	00:00:05	0.1 km/h	221° true	S28 22 14.9 E27 32 48.9
321	1423 m	7 m	00:00:12	2 km/h	15° true	S28 22 14.9 E27 32 48.9
322	1421 m	8 m	00:00:09	3 km/h	317° true	S28 22 14.7 E27 32 48.9
323	1421 m	1 m	00:00:21	0.2 km/h	124° true	S28 22 14.5 E27 32 48.7
324	1422 m	0 m	00:00:08	0.2 km/h	62° true	S28 22 14.6 E27 32 48.8
325	1425 m	0 m	00:00:08	0.1 km/h	105° true	S28 22 14.6 E27 32 48.8
326	1424 m	0 m	00:00:21	0.1 km/h	85° true	S28 22 14.6 E27 32 48.8
327	1423 m	1 m	00:00:39	0.0 km/h	92° true	S28 22 14.6 E27 32 48.8
328	1423 m	0 m	00:00:02	0.3 km/h	270° true	S28 22 14.6 E27 32 48.8
329	1421 m	1 m	00:00:23	0.2 km/h	223° true	S28 22 14.6 E27 32 48.8
330	1422 m	0 m	00:00:03	0.2 km/h	214° true	S28 22 14.6 E27 32 48.8
331	1419 m	0 m	00:00:04	0.2 km/h	221° true	S28 22 14.6 E27 32 48.8
332	1423 m	0 m	00:00:01	0.2 km/h	161° true	S28 22 14.6 E27 32 48.8
333	1418 m	0 m	00:00:01	0.4 km/h	9° true	S28 22 14.6 E27 32 48.8
334	1429 m	0 m	00:00:01	2 km/h	47° true	S28 22 14.6 E27 32 48.8
335	1422 m	0 m	00:00:10	0.1 km/h	153° true	S28 22 14.6 E27 32 48.8
336	1421 m	2 m	00:00:17	0.4 km/h	198° true	S28 22 14.6 E27 32 48.8
337	1421 m	3 m	00:00:17	0.7 km/h	218° true	S28 22 14.6 E27 32 48.8
338	1421 m	5 m	00:00:16	1.1 km/h	224° true	S28 22 14.7 E27 32 48.7
339	1422 m	12 m	00:00:17	2 km/h	240° true	S28 22 14.8 E27 32 48.6
340	1422 m	7 m	00:00:10	3 km/h	231° true	S28 22 15.0 E27 32 48.2
341	1422 m	4 m	00:00:08	2 km/h	264° true	S28 22 15.2 E27 32 48.0
342	1415 m	0 m	00:00:01	0.2 km/h	283° true	S28 22 15.2 E27 32 47.8
343	1420 m	0 m	00:00:02	0.1 km/h	262° true	S28 22 15.2 E27 32 47.8
344	1423 m	0 m	00:00:01	0.0 km/h	221° true	S28 22 15.2 E27 32 47.8

345	1423 m	0 m	00:00:03	0.2 km/h	7° true	S28 22 15.2 E27 32 47.8
346	1430 m	0 m	00:00:01	0.3 km/h	16° true	S28 22 15.2 E27 32 47.8
347	1424 m	0 m	00:00:05	0.2 km/h	141° true	S28 22 15.2 E27 32 47.8
348	1428 m	0 m	00:00:01	1.4 km/h	128° true	S28 22 15.2 E27 32 47.9
349	1423 m	1 m	00:00:03	0.9 km/h	208° true	S28 22 15.2 E27 32 47.9
350	1423 m	2 m	00:00:13	0.7 km/h	224° true	S28 22 15.2 E27 32 47.8
351	1419 m	0 m	00:00:01	0.2 km/h	236° true	S28 22 15.3 E27 32 47.8
352	1423 m	0 m	00:00:06	0.2 km/h	236° true	S28 22 15.3 E27 32 47.8
353	1427 m	0 m	00:00:01	0.8 km/h	215° true	S28 22 15.3 E27 32 47.8
354	1422 m	2 m	00:00:06	1.3 km/h	195° true	S28 22 15.3 E27 32 47.8
355	1418 m	0 m	00:00:01	0.2 km/h	353° true	S28 22 15.4 E27 32 47.7
356	1422 m	0 m	00:00:03	0.1 km/h	347° true	S28 22 15.4 E27 32 47.7
357	1429 m	0 m	00:00:01	0.2 km/h	228° true	S28 22 15.4 E27 32 47.7
358	1424 m	9 m	00:00:16	2 km/h	218° true	S28 22 15.4 E27 32 47.7
359	1424 m	10 m	00:00:13	3 km/h	226° true	S28 22 15.6 E27 32 47.5
360	1425 m	3 m	00:00:09	1.3 km/h	237° true	S28 22 15.8 E27 32 47.3
361	1412 m	0 m	00:00:01	0.2 km/h	327° true	S28 22 15.9 E27 32 47.2
362	1433 m	0 m	00:00:01	0.3 km/h	264° true	S28 22 15.9 E27 32 47.2
363	1426 m	0 m	00:00:02	0.0 km/h	270° true	S28 22 15.9 E27 32 47.2
364	1425 m	4 m	00:00:33	0.5 km/h	247° true	S28 22 15.9 E27 32 47.2
365	1424 m	2 m	00:00:26	0.2 km/h	322° true	S28 22 15.9 E27 32 47.0
366	1424 m	6 m	00:00:30	0.7 km/h	233° true	S28 22 15.9 E27 32 47.0
367	1425 m	1 m	00:00:07	0.4 km/h	315° true	S28 22 16.0 E27 32 46.8
368	1418 m	0 m	00:00:01	0.7 km/h	324° true	S28 22 16.0 E27 32 46.8
369	1429 m	0 m	00:00:01	0.4 km/h	275° true	S28 22 16.0 E27 32 46.8
370	1425 m	9 m	00:00:11	3 km/h	239° true	S28 22 16.0 E27 32 46.8
371	1425 m	9 m	00:00:17	2 km/h	241° true	S28 22 16.1 E27 32 46.5
372	1425 m	3 m	00:00:12	0.8 km/h	85° true	S28 22 16.2 E27 32 46.2
373	1423 m	1 m	00:00:12	0.3 km/h	243° true	S28 22 16.2 E27 32 46.3
374	1431 m	0 m	00:00:01	0.4 km/h	218° true	S28 22 16.3 E27 32 46.3
375	1423 m	1 m	00:00:04	0.6 km/h	190° true	S28 22 16.3 E27 32 46.3
376	1415 m	0 m	00:00:01	0.8 km/h	147° true	S28 22 16.3 E27 32 46.3
377	1420 m	0 m	00:00:01	0.3 km/h	164° true	S28 22 16.3 E27 32 46.3
378	1425 m	0 m	00:00:01	0.1 km/h	24° true	S28 22 16.3 E27 32 46.3
379	1435 m	0 m	00:00:01	0.4 km/h	172° true	S28 22 16.3 E27 32 46.3
380	1428 m	1 m	00:00:02	2 km/h	166° true	S28 22 16.3 E27 32 46.3
381	1424 m	5 m	00:00:10	2 km/h	74° true	S28 22 16.3 E27 32 46.3
382	1425 m	8 m	00:00:14	2 km/h	103° true	S28 22 16.3 E27 32 46.5
383	1426 m	3 m	00:00:14	0.9 km/h	110° true	S28 22 16.3 E27 32 46.8
384	1426 m	1 m	00:00:18	0.2 km/h	144° true	S28 22 16.4 E27 32 46.9
385	1428 m	0 m	00:00:22	0.0 km/h	238° true	S28 22 16.4 E27 32 46.9
386	1428 m	3 m	00:00:19	0.6 km/h	26° true	S28 22 16.4 E27 32 46.9
387	1428 m	2 m	00:00:09	0.8 km/h	347° true	S28 22 16.3 E27 32 47.0
388	1428 m	14 m	00:00:16	3 km/h	35° true	S28 22 16.3 E27 32 46.9
389	1428 m	1 m	00:00:14	0.3 km/h	28° true	S28 22 15.9 E27 32 47.2
390	1426 m	1 m	00:00:02	1.2 km/h	238° true	S28 22 15.9 E27 32 47.3
391	1425 m	0 m	00:00:02	0.5 km/h	198° true	S28 22 15.9 E27 32 47.2
392	1430 m	0 m	00:00:01	1.5 km/h	325° true	S28 22 15.9 E27 32 47.2
393	1428 m	2 m	00:00:02	3 km/h	16° true	S28 22 15.9 E27 32 47.2
394	1427 m	11 m	00:00:15	3 km/h	49° true	S28 22 15.8 E27 32 47.2
395	1427 m	1 m	00:00:04	1.3 km/h	3° true	S28 22 15.6 E27 32 47.5
396	1426 m	1 m	00:00:04	1.3 km/h	263° true	S28 22 15.5 E27 32 47.5
397	1429 m	4 m	00:00:04	3 km/h	253° true	S28 22 15.5 E27 32 47.5
398	1431 m	21 m	00:00:19	4 km/h	236° true	S28 22 15.6 E27 32 47.4
399	1428 m	5 m	00:00:06	3 km/h	62° true	S28 22 16.0 E27 32 46.7
400	1427 m	10 m	00:00:08	5 km/h	59° true	S28 22 15.9 E27 32 46.9
401	1428 m	15 m	00:00:12	4 km/h	60° true	S28 22 15.7 E27 32 47.2
402	1429 m	5 m	00:00:07	3 km/h	31° true	S28 22 15.5 E27 32 47.7

403	1420 m	0 m	00:00:01	0.7 km/h	118° true	S28 22 15.3 E27 32 47.8
404	1435 m	1 m	00:00:01	2 km/h	120° true	S28 22 15.3 E27 32 47.8
405	1427 m	6 m	00:00:08	3 km/h	135° true	S28 22 15.4 E27 32 47.8
406	1427 m	1 m	00:00:05	1.0 km/h	127° true	S28 22 15.5 E27 32 47.9
407	1422 m	0 m	00:00:01	0.3 km/h	204° true	S28 22 15.5 E27 32 48.0
408	1431 m	0 m	00:00:01	0.0 km/h	180° true	S28 22 15.5 E27 32 48.0
409	1414 m	0 m	00:00:01	0.2 km/h	150° true	S28 22 15.5 E27 32 48.0
410	1431 m	0 m	00:00:01	0.5 km/h	147° true	S28 22 15.5 E27 32 48.0
411	1439 m	0 m	00:00:01	0.7 km/h	144° true	S28 22 15.5 E27 32 48.0
412	1430 m	1 m	00:00:02	0.9 km/h	181° true	S28 22 15.5 E27 32 48.0
413	1426 m	1 m	00:00:09	0.3 km/h	232° true	S28 22 15.5 E27 32 48.0
414	1430 m	0 m	00:00:01	0.9 km/h	139° true	S28 22 15.6 E27 32 48.0
415	1426 m	0 m	00:00:01	0.5 km/h	124° true	S28 22 15.6 E27 32 48.0
416	1420 m	0 m	00:00:01	0.2 km/h	101° true	S28 22 15.6 E27 32 48.0
417	1423 m	0 m	00:00:01	0.2 km/h	139° true	S28 22 15.6 E27 32 48.0
418	1427 m	0 m	00:00:01	0.2 km/h	164° true	S28 22 15.6 E27 32 48.0
419	1427 m	0 m	00:00:03	0.2 km/h	199° true	S28 22 15.6 E27 32 48.0
420	1439 m	0 m	00:00:01	0.2 km/h	246° true	S28 22 15.6 E27 32 48.0
421	1427 m	0 m	00:00:02	0.1 km/h	8° true	S28 22 15.6 E27 32 48.0
422	1426 m	0 m	00:00:09	0.1 km/h	234° true	S28 22 15.6 E27 32 48.0
423	1430 m	0 m	00:00:02	0.3 km/h	41° true	S28 22 15.6 E27 32 48.0
424	1427 m	1 m	00:00:32	0.1 km/h	107° true	S28 22 15.6 E27 32 48.0
425	1428 m	0 m	00:00:05	0.0 km/h	261° true	S28 22 15.6 E27 32 48.0
426	1429 m	0 m	00:00:41	0.0 km/h	337° true	S28 22 15.6 E27 32 48.0
427	1426 m	9 m	00:00:13	3 km/h	163° true	S28 22 15.6 E27 32 48.0
428	1429 m	1 m	00:00:01	3 km/h	170° true	S28 22 15.9 E27 32 48.1
429	1429 m	3 m	00:00:23	0.5 km/h	167° true	S28 22 15.9 E27 32 48.1
430	1429 m	17 m	00:00:17	4 km/h	196° true	S28 22 16.0 E27 32 48.1
431	1426 m	5 m	00:00:07	3 km/h	207° true	S28 22 16.5 E27 32 48.0
432	1423 m	0 m	00:00:01	1.1 km/h	215° true	S28 22 16.6 E27 32 47.9
433	1433 m	1 m	00:00:01	2 km/h	206° true	S28 22 16.6 E27 32 47.9
434	1427 m	2 m	00:00:13	0.6 km/h	115° true	S28 22 16.7 E27 32 47.9
435	1426 m	1 m	00:00:14	0.4 km/h	74° true	S28 22 16.7 E27 32 47.9
436	1431 m	1 m	00:00:01	2 km/h	55° true	S28 22 16.7 E27 32 48.0
437	1427 m	1 m	00:00:17	0.2 km/h	115° true	S28 22 16.7 E27 32 48.0
438	1428 m	9 m	00:00:14	2 km/h	191° true	S28 22 16.7 E27 32 48.0
439	1428 m	0 m	00:00:21	0.0 km/h	178° true	S28 22 17.0 E27 32 48.0
440	1428 m	0 m	00:00:25	0.1 km/h	1° true	S28 22 17.0 E27 32 48.0
441	1425 m	0 m	00:00:01	0.1 km/h	348° true	S28 22 17.0 E27 32 48.0
442	1429 m	0 m	00:00:01	0.7 km/h	303° true	S28 22 17.0 E27 32 48.0
443	1433 m	1 m	00:00:01	2 km/h	246° true	S28 22 17.0 E27 32 48.0
444	1429 m	2 m	00:00:02	4 km/h	243° true	S28 22 17.0 E27 32 47.9
445	1428 m	6 m	00:00:05	4 km/h	247° true	S28 22 17.0 E27 32 47.9
446	1429 m	8 m	00:00:07	4 km/h	255° true	S28 22 17.1 E27 32 47.7
447	1429 m	18 m	00:00:17	4 km/h	232° true	S28 22 17.2 E27 32 47.4
448	1428 m	8 m	00:00:07	4 km/h	223° true	S28 22 17.5 E27 32 46.9
449	1428 m	12 m	00:00:17	3 km/h	226° true	S28 22 17.7 E27 32 46.7
450	1428 m	1 m	00:00:15	0.3 km/h	195° true	S28 22 18.0 E27 32 46.3
451	1428 m	6 m	00:00:05	4 km/h	182° true	S28 22 18.0 E27 32 46.3
452	1428 m	2 m	00:00:02	4 km/h	161° true	S28 22 18.2 E27 32 46.3
453	1428 m	7 m	00:00:15	2 km/h	214° true	S28 22 18.3 E27 32 46.4
454	1428 m	1 m	00:00:32	0.1 km/h	274° true	S28 22 18.4 E27 32 46.2
455	1430 m	1 m	00:00:28	0.1 km/h	336° true	S28 22 18.4 E27 32 46.2
456	1429 m	17 m	00:00:16	4 km/h	267° true	S28 22 18.4 E27 32 46.2
457	1428 m	4 m	00:00:09	2 km/h	224° true	S28 22 18.4 E27 32 45.6
458	1429 m	7 m	00:00:14	2 km/h	177° true	S28 22 18.5 E27 32 45.5
459	1429 m	2 m	00:00:13	0.5 km/h	295° true	S28 22 18.8 E27 32 45.5
460	1428 m	1 m	00:00:04	0.7 km/h	271° true	S28 22 18.7 E27 32 45.4

461	1430 m	8 m	00:00:10	3 km/h	215° true	S28 22 18.7 E27 32 45.4
462	1429 m	6 m	00:00:14	2 km/h	215° true	S28 22 19.0 E27 32 45.2
463	1428 m	3 m	00:00:05	2 km/h	238° true	S28 22 19.1 E27 32 45.1
464	1427 m	12 m	00:00:16	3 km/h	216° true	S28 22 19.2 E27 32 45.0
465	1430 m	0 m	00:00:11	0.1 km/h	270° true	S28 22 19.5 E27 32 44.7
466	1430 m	0 m	00:00:15	0.1 km/h	127° true	S28 22 19.5 E27 32 44.7
467	1430 m	10 m	00:00:09	4 km/h	199° true	S28 22 19.5 E27 32 44.7
468	1431 m	6 m	00:00:15	1.5 km/h	255° true	S28 22 19.8 E27 32 44.6
469	1430 m	1 m	00:00:08	0.5 km/h	49° true	S28 22 19.8 E27 32 44.4
470	1423 m	0 m	00:00:01	0.4 km/h	319° true	S28 22 19.8 E27 32 44.4
471	1423 m	0 m	00:00:01	0.3 km/h	310° true	S28 22 19.8 E27 32 44.4
472	1426 m	0 m	00:00:02	0.2 km/h	306° true	S28 22 19.8 E27 32 44.4
473	1427 m	0 m	00:00:02	0.2 km/h	302° true	S28 22 19.8 E27 32 44.4
474	1440 m	0 m	00:00:01	0.1 km/h	270° true	S28 22 19.8 E27 32 44.4
475	1430 m	0 m	00:00:01	0.1 km/h	286° true	S28 22 19.8 E27 32 44.4
476	1427 m	0 m	00:00:01	0.1 km/h	300° true	S28 22 19.8 E27 32 44.4
477	1428 m	0 m	00:00:03	0.2 km/h	278° true	S28 22 19.8 E27 32 44.4
478	1423 m	0 m	00:00:01	0.1 km/h	344° true	S28 22 19.8 E27 32 44.4
479	1435 m	0 m	00:00:01	0.9 km/h	96° true	S28 22 19.8 E27 32 44.4
480	1432 m	0 m	00:00:02	0.4 km/h	110° true	S28 22 19.8 E27 32 44.4
481	1430 m	3 m	00:00:05	2 km/h	225° true	S28 22 19.8 E27 32 44.4
482	1430 m	11 m	00:00:14	3 km/h	193° true	S28 22 19.9 E27 32 44.4
483	1429 m	3 m	00:00:03	4 km/h	111° true	S28 22 20.2 E27 32 44.3
484	1430 m	9 m	00:00:14	2 km/h	127° true	S28 22 20.3 E27 32 44.4
485	1431 m	6 m	00:00:17	1.2 km/h	102° true	S28 22 20.4 E27 32 44.6
486	1430 m	3 m	00:00:25	0.4 km/h	73° true	S28 22 20.5 E27 32 44.8
487	1432 m	0 m	00:00:05	0.1 km/h	44° true	S28 22 20.4 E27 32 45.0
488	1429 m	1 m	00:00:03	0.7 km/h	110° true	S28 22 20.4 E27 32 45.0
489	1430 m	6 m	00:00:12	2 km/h	97° true	S28 22 20.4 E27 32 45.0
490	1432 m	1 m	00:00:09	0.4 km/h	256° true	S28 22 20.5 E27 32 45.2
491	1425 m	0 m	00:00:01	0.2 km/h	286° true	S28 22 20.5 E27 32 45.2
492	1432 m	0 m	00:00:01	0.2 km/h	259° true	S28 22 20.5 E27 32 45.2
493	1437 m	0 m	00:00:01	0.4 km/h	243° true	S28 22 20.5 E27 32 45.2
494	1432 m	1 m	00:00:19	0.1 km/h	106° true	S28 22 20.5 E27 32 45.2
495	1431 m	1 m	00:00:27	0.2 km/h	74° true	S28 22 20.5 E27 32 45.2
496	1433 m	0 m	00:00:08	0.1 km/h	172° true	S28 22 20.5 E27 32 45.2
497	1430 m	2 m	00:00:25	0.3 km/h	292° true	S28 22 20.5 E27 32 45.2
498	1433 m	0 m	00:00:01	0.6 km/h	317° true	S28 22 20.5 E27 32 45.2
499	1428 m	0 m	00:00:01	0.6 km/h	354° true	S28 22 20.5 E27 32 45.1
500	1434 m	2 m	00:00:02	3 km/h	51° true	S28 22 20.5 E27 32 45.1
501	1431 m	14 m	00:00:13	4 km/h	65° true	S28 22 20.4 E27 32 45.2
502	1433 m	13 m	00:00:20	2 km/h	59° true	S28 22 20.2 E27 32 45.7
503	1434 m	15 m	00:00:14	4 km/h	49° true	S28 22 20.0 E27 32 46.1
504	1434 m	10 m	00:00:09	4 km/h	45° true	S28 22 19.7 E27 32 46.5
505	1433 m	6 m	00:00:06	4 km/h	9° true	S28 22 19.5 E27 32 46.7
506	1434 m	13 m	00:00:17	3 km/h	343° true	S28 22 19.2 E27 32 46.8
507	1433 m	17 m	00:00:16	4 km/h	7° true	S28 22 18.9 E27 32 46.7
508	1433 m	8 m	00:00:07	4 km/h	318° true	S28 22 18.3 E27 32 46.7
509	1433 m	8 m	00:00:07	4 km/h	319° true	S28 22 18.1 E27 32 46.5
510	1433 m	15 m	00:00:17	3 km/h	313° true	S28 22 17.9 E27 32 46.3
511	1433 m	4 m	00:00:13	1.1 km/h	15° true	S28 22 17.6 E27 32 45.9
512	1433 m	0 m	00:00:31	0.0 km/h	273° true	S28 22 17.5 E27 32 46.0
513	1434 m	1 m	00:00:06	0.5 km/h	358° true	S28 22 17.5 E27 32 46.0
514	1434 m	25 m	00:00:20	4 km/h	21° true	S28 22 17.4 E27 32 46.0
515	1434 m	20 m	00:00:20	4 km/h	60° true	S28 22 16.7 E27 32 46.3
516	1435 m	1 m	00:00:25	0.2 km/h	225° true	S28 22 16.4 E27 32 46.9
517	1434 m	1 m	00:00:04	0.9 km/h	149° true	S28 22 16.4 E27 32 46.9
518	1428 m	0 m	00:00:01	2 km/h	235° true	S28 22 16.4 E27 32 46.9

519	1433 m	1 m	00:00:01	3 km/h	215° true	S28 22 16.4 E27 32 46.9
520	1438 m	1 m	00:00:01	2 km/h	290° true	S28 22 16.5 E27 32 46.9
521	1436 m	1 m	00:00:04	0.8 km/h	238° true	S28 22 16.4 E27 32 46.9
522	1433 m	1 m	00:00:01	2 km/h	139° true	S28 22 16.5 E27 32 46.8
523	1433 m	1 m	00:00:02	1.3 km/h	103° true	S28 22 16.5 E27 32 46.9
524	1434 m	2 m	00:00:02	3 km/h	49° true	S28 22 16.5 E27 32 46.9
525	1434 m	16 m	00:00:08	7 km/h	193° true	S28 22 16.4 E27 32 46.9
526	1434 m	79 m	00:00:09	32 km/h	241° true	S28 22 16.9 E27 32 46.8
527	1434 m	135 m	00:00:09	54 km/h	240° true	S28 22 18.2 E27 32 44.3
528	1435 m	49 m	00:00:03	59 km/h	239° true	S28 22 20.3 E27 32 40.0
529	1437 m	54 m	00:00:06	32 km/h	238° true	S28 22 21.2 E27 32 38.4
530	1438 m	8 m	00:00:08	4 km/h	236° true	S28 22 22.1 E27 32 36.7
531	1438 m	3 m	00:00:21	0.6 km/h	20° true	S28 22 22.2 E27 32 36.5
532	1440 m	0 m	00:00:52	0.0 km/h	4° true	S28 22 22.1 E27 32 36.5
533	1441 m	0 m	00:00:02	0.5 km/h	101° true	S28 22 22.1 E27 32 36.5
534	1440 m	4 m	00:00:14	1.0 km/h	151° true	S28 22 22.1 E27 32 36.5
535	1439 m	1 m	00:00:31	0.1 km/h	175° true	S28 22 22.2 E27 32 36.6
536	1438 m	0 m	00:00:01	0.6 km/h	183° true	S28 22 22.3 E27 32 36.6
537	1443 m	0 m	00:00:06	0.3 km/h	153° true	S28 22 22.3 E27 32 36.6
538	1437 m	1 m	00:00:01	3 km/h	156° true	S28 22 22.3 E27 32 36.6
539	1441 m	1 m	00:00:05	0.7 km/h	198° true	S28 22 22.3 E27 32 36.6
540	1436 m	1 m	00:00:01	2 km/h	240° true	S28 22 22.3 E27 32 36.6
541	1445 m	0 m	00:00:01	1.2 km/h	212° true	S28 22 22.3 E27 32 36.6
542	1438 m	0 m	00:00:01	1.1 km/h	265° true	S28 22 22.3 E27 32 36.6
543	1442 m	0 m	00:00:07	0.3 km/h	310° true	S28 22 22.3 E27 32 36.6
544	1439 m	1 m	00:00:07	0.3 km/h	67° true	S28 22 22.3 E27 32 36.6
545	1441 m	3 m	00:00:03	4 km/h	61° true	S28 22 22.3 E27 32 36.6
546	1439 m	7 m	00:00:16	2 km/h	91° true	S28 22 22.3 E27 32 36.7
547	1439 m	10 m	00:00:14	3 km/h	92° true	S28 22 22.3 E27 32 36.9
548	1439 m	9 m	00:00:15	2 km/h	28° true	S28 22 22.3 E27 32 37.3
549	1437 m	5 m	00:00:12	2 km/h	286° true	S28 22 22.0 E27 32 37.5
550	1438 m	0 m	00:00:02	0.7 km/h	284° true	S28 22 22.0 E27 32 37.3
551	1432 m	0 m	00:00:01	0.4 km/h	248° true	S28 22 22.0 E27 32 37.3
552	1442 m	0 m	00:00:01	0.5 km/h	196° true	S28 22 22.0 E27 32 37.3
553	1438 m	1 m	00:00:34	0.1 km/h	201° true	S28 22 22.0 E27 32 37.2
554	1438 m	1 m	00:00:09	0.5 km/h	136° true	S28 22 22.0 E27 32 37.2
555	1439 m	2 m	00:00:02	4 km/h	133° true	S28 22 22.0 E27 32 37.3
556	1437 m	12 m	00:00:18	2 km/h	83° true	S28 22 22.1 E27 32 37.3
557	1436 m	0 m	00:00:01	1.2 km/h	100° true	S28 22 22.0 E27 32 37.8
558	1436 m	4 m	00:00:15	0.9 km/h	87° true	S28 22 22.1 E27 32 37.8
559	1437 m	1 m	00:00:17	0.3 km/h	101° true	S28 22 22.0 E27 32 37.9
560	1439 m	0 m	00:00:02	0.2 km/h	105° true	S28 22 22.1 E27 32 38.0
561	1438 m	1 m	00:00:26	0.2 km/h	168° true	S28 22 22.1 E27 32 38.0
562	1437 m	6 m	00:00:13	2 km/h	74° true	S28 22 22.1 E27 32 38.0
563	1436 m	10 m	00:00:15	2 km/h	30° true	S28 22 22.0 E27 32 38.2
564	1436 m	5 m	00:00:06	3 km/h	160° true	S28 22 21.8 E27 32 38.4
565	1435 m	9 m	00:00:08	4 km/h	137° true	S28 22 21.9 E27 32 38.4
566	1436 m	5 m	00:00:05	4 km/h	104° true	S28 22 22.1 E27 32 38.6
567	1435 m	22 m	00:00:18	4 km/h	150° true	S28 22 22.2 E27 32 38.8
568	1433 m	1 m	00:00:01	4 km/h	131° true	S28 22 22.8 E27 32 39.2
569	1433 m	8 m	00:00:13	2 km/h	128° true	S28 22 22.8 E27 32 39.3
570	1433 m	1 m	00:00:28	0.1 km/h	288° true	S28 22 23.0 E27 32 39.5
571	1429 m	0 m	00:00:01	0.5 km/h	240° true	S28 22 23.0 E27 32 39.5
572	1436 m	2 m	00:00:02	3 km/h	259° true	S28 22 23.0 E27 32 39.5
573	1433 m	9 m	00:00:07	4 km/h	264° true	S28 22 23.0 E27 32 39.4
574	1435 m	4 m	00:00:04	3 km/h	243° true	S28 22 23.0 E27 32 39.1
575	1434 m	5 m	00:00:07	2 km/h	236° true	S28 22 23.1 E27 32 39.0
576	1432 m	0 m	00:00:02	0.3 km/h	70° true	S28 22 23.1 E27 32 38.8

577	1439 m	0 m	00:00:01	1.4 km/h	163° true	S28 22 23.1 E27 32 38.8
578	1435 m	10 m	00:00:16	2 km/h	248° true	S28 22 23.2 E27 32 38.8
579	1436 m	20 m	00:00:18	4 km/h	240° true	S28 22 23.3 E27 32 38.5
580	1436 m	9 m	00:00:08	4 km/h	239° true	S28 22 23.6 E27 32 37.9
581	1436 m	2 m	00:00:02	4 km/h	226° true	S28 22 23.7 E27 32 37.6
582	1437 m	5 m	00:00:05	4 km/h	235° true	S28 22 23.8 E27 32 37.5
583	1436 m	11 m	00:00:13	3 km/h	258° true	S28 22 23.9 E27 32 37.4
584	1437 m	10 m	00:00:15	2 km/h	17° true	S28 22 24.0 E27 32 37.0
585	1437 m	2 m	00:00:16	0.4 km/h	212° true	S28 22 23.7 E27 32 37.1
586	1438 m	2 m	00:00:09	0.7 km/h	259° true	S28 22 23.7 E27 32 37.0
587	1438 m	4 m	00:00:09	2 km/h	69° true	S28 22 23.7 E27 32 37.0
588	1429 m	0 m	00:00:01	0.8 km/h	240° true	S28 22 23.7 E27 32 37.1
589	1435 m	0 m	00:00:01	0.5 km/h	339° true	S28 22 23.7 E27 32 37.1
590	1448 m	0 m	00:00:01	0.5 km/h	326° true	S28 22 23.7 E27 32 37.1
591	1439 m	0 m	00:00:05	0.3 km/h	257° true	S28 22 23.7 E27 32 37.1
592	1433 m	0 m	00:00:01	0.3 km/h	111° true	S28 22 23.7 E27 32 37.1
593	1441 m	0 m	00:00:01	1.4 km/h	170° true	S28 22 23.7 E27 32 37.1
594	1439 m	2 m	00:00:02	3 km/h	218° true	S28 22 23.7 E27 32 37.1
595	1438 m	10 m	00:00:10	4 km/h	232° true	S28 22 23.7 E27 32 37.1
596	1438 m	14 m	00:00:13	4 km/h	236° true	S28 22 23.9 E27 32 36.8
597	1440 m	17 m	00:00:16	4 km/h	226° true	S28 22 24.2 E27 32 36.3
598	1440 m	11 m	00:00:15	3 km/h	269° true	S28 22 24.6 E27 32 35.9
599	1441 m	1 m	00:00:13	0.2 km/h	335° true	S28 22 24.6 E27 32 35.5
600	1436 m	0 m	00:00:01	0.3 km/h	33° true	S28 22 24.6 E27 32 35.5
601	1442 m	3 m	00:00:05	2 km/h	336° true	S28 22 24.6 E27 32 35.5
602	1441 m	9 m	00:00:17	2 km/h	305° true	S28 22 24.5 E27 32 35.4
603	1442 m	3 m	00:00:35	0.3 km/h	109° true	S28 22 24.3 E27 32 35.2
604	1441 m	2 m	00:00:23	0.4 km/h	343° true	S28 22 24.3 E27 32 35.2
605	1442 m	2 m	00:00:03	2 km/h	74° true	S28 22 24.3 E27 32 35.2
606	1436 m	0 m	00:00:01	0.8 km/h	119° true	S28 22 24.2 E27 32 35.3
607	1446 m	1 m	00:00:01	2 km/h	120° true	S28 22 24.2 E27 32 35.3
608	1443 m	2 m	00:00:02	3 km/h	117° true	S28 22 24.3 E27 32 35.3
609	1442 m	3 m	00:00:12	1.0 km/h	264° true	S28 22 24.3 E27 32 35.4
610	1443 m	15 m	00:00:16	3 km/h	235° true	S28 22 24.3 E27 32 35.2
611	1443 m	1 m	00:00:13	0.4 km/h	255° true	S28 22 24.6 E27 32 34.8
612	1438 m	0 m	00:00:01	0.7 km/h	358° true	S28 22 24.6 E27 32 34.7
613	1447 m	0 m	00:00:01	0.2 km/h	313° true	S28 22 24.6 E27 32 34.7
614	1444 m	9 m	00:00:15	2 km/h	251° true	S28 22 24.6 E27 32 34.7
615	1444 m	6 m	00:00:13	2 km/h	263° true	S28 22 24.7 E27 32 34.4
616	1445 m	4 m	00:00:08	2 km/h	271° true	S28 22 24.7 E27 32 34.2
617	1445 m	2 m	00:00:02	4 km/h	322° true	S28 22 24.7 E27 32 34.1
618	1445 m	23 m	00:00:20	4 km/h	347° true	S28 22 24.6 E27 32 34.0
619	1446 m	4 m	00:00:17	0.7 km/h	358° true	S28 22 23.9 E27 32 33.8
620	1445 m	19 m	00:00:19	4 km/h	51° true	S28 22 23.8 E27 32 33.8
621	1445 m	13 m	00:00:14	3 km/h	65° true	S28 22 23.4 E27 32 34.4
622	1445 m	2 m	00:00:07	1.2 km/h	47° true	S28 22 23.2 E27 32 34.8
623	1442 m	0 m	00:00:02	0.7 km/h	326° true	S28 22 23.2 E27 32 34.9
624	1446 m	0 m	00:00:01	1.1 km/h	329° true	S28 22 23.2 E27 32 34.9
625	1445 m	0 m	00:00:01	0.9 km/h	332° true	S28 22 23.2 E27 32 34.9
626	1442 m	0 m	00:00:01	0.5 km/h	339° true	S28 22 23.2 E27 32 34.9
627	1446 m	0 m	00:00:03	0.0 km/h	307° true	S28 22 23.2 E27 32 34.9
628	1445 m	1 m	00:00:13	0.3 km/h	39° true	S28 22 23.2 E27 32 34.9
629	1435 m	0 m	00:00:01	0.3 km/h	256° true	S28 22 23.1 E27 32 34.9
630	1451 m	0 m	00:00:01	0.5 km/h	56° true	S28 22 23.1 E27 32 34.9
631	1445 m	1 m	00:00:02	2 km/h	230° true	S28 22 23.1 E27 32 34.9
632	1444 m	2 m	00:00:03	2 km/h	235° true	S28 22 23.1 E27 32 34.9
633	1441 m	0 m	00:00:01	0.8 km/h	261° true	S28 22 23.2 E27 32 34.8
634	1443 m	0 m	00:00:01	0.3 km/h	201° true	S28 22 23.2 E27 32 34.8

635	1445 m	0 m	00:00:01	0.5 km/h	155° true	S28 22 23.2 E27 32 34.8
636	1442 m	0 m	00:00:01	0.2 km/h	19° true	S28 22 23.2 E27 32 34.8
637	1445 m	11 m	00:00:22	2 km/h	59° true	S28 22 23.2 E27 32 34.8
638	1444 m	22 m	00:00:19	4 km/h	61° true	S28 22 23.0 E27 32 35.2
639	1443 m	17 m	00:00:17	4 km/h	49° true	S28 22 22.7 E27 32 35.9
640	1443 m	3 m	00:00:03	4 km/h	68° true	S28 22 22.3 E27 32 36.3
641	1443 m	5 m	00:00:18	1.0 km/h	61° true	S28 22 22.2 E27 32 36.4
642	1443 m	1 m	00:00:18	0.3 km/h	318° true	S28 22 22.2 E27 32 36.6